



Gaustadalléen 21  
0349 Oslo  
Norway

(+47) 22 95 85 44  
(+47) 22 95 85 46

## Technical Description

The CC110LEM-868-915, see Figure 1, includes Texas Instruments' CC110L, which is a sub-1 GHz transceiver designed for low power wireless applications.

CC110L has a balanced output (RF\_N and RF\_P), which is transformed to a single ended, 50 ohm signal through a passive component (capacitor/inductor) balun. The output of the balun is low-pass filtered to attenuate harmonic radiation and then connected to an integrated pcb helix antenna.

The CC110LEM-868-915 cannot be pre-programmed and CC110L will not be in active mode (transmit or receive) at power-up. The user needs to configure CC110L into active mode.

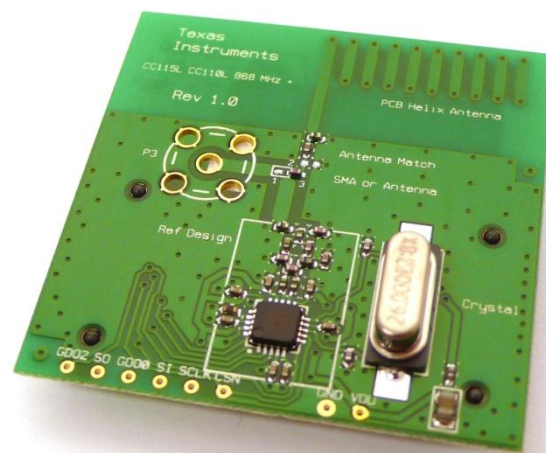


Figure 1. CC110LEM-868-915