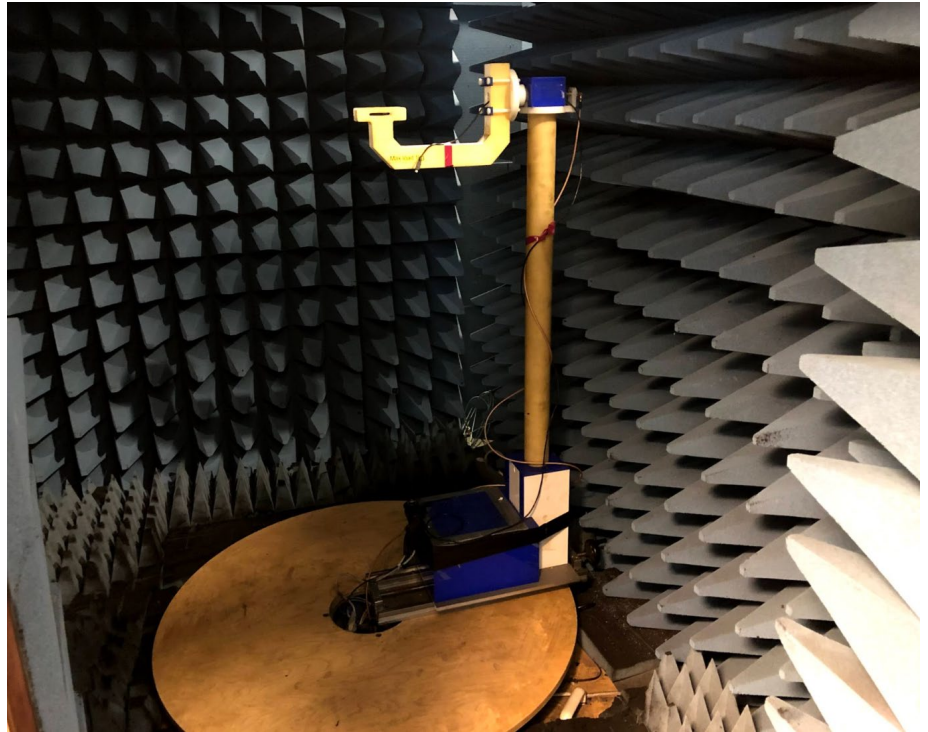


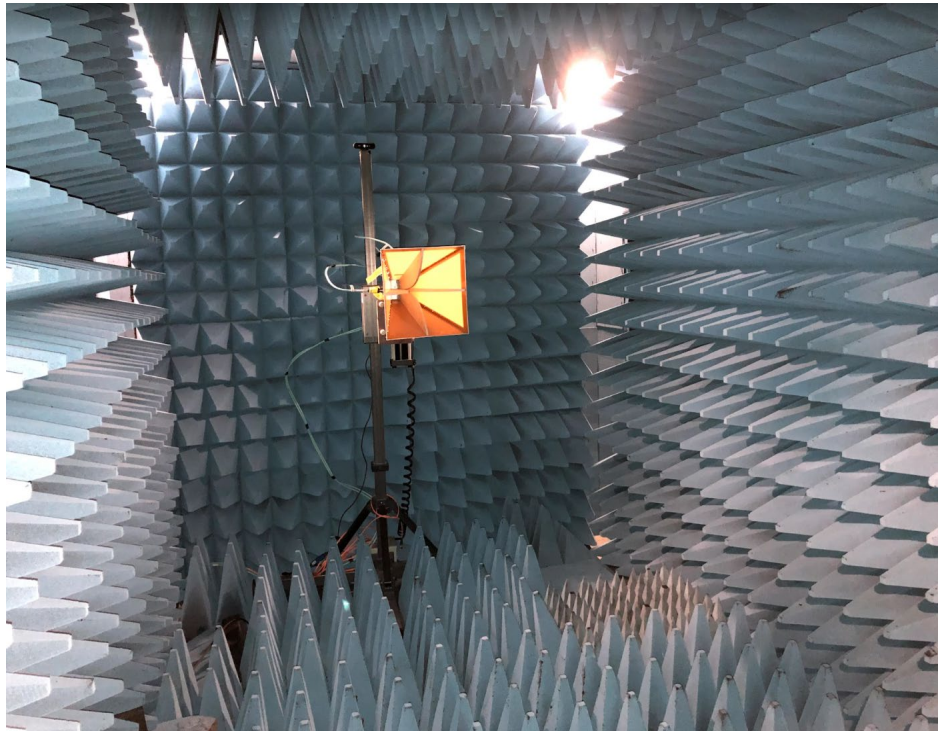
Hardware	R&S@TS8991 OTA (Over The Air) performance test system. Additional RSE (Radiated Spurious Emission) test capability with additional filter/LNA support for spurious emissions measurements.
Software	R&S@EMC32 measurement software for Automation for EMC compliance and pre-compliance
Table of Calibrated Instruments	SA30 - R&S FSW26 - Due 30th March 2023
Test Site Information	TI Norway, Validation Lab, Hoffsvain 70C, 0377 Oslo
Completed Test Dates	2nd February 2023
Test Personnel	Richard Wallace

Test Setup Photos:

Placement of AUT on turn arm in chamber:



Receiving antenna in chamber:



902 MHz

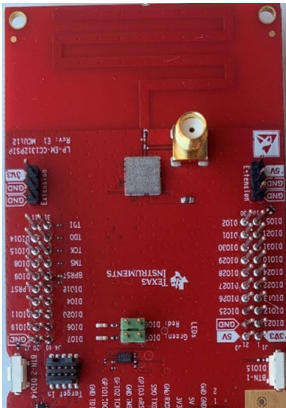
TRP=109.68131265E-3								
MaxEIRP=3.8378104306E+0								
MinEIRP=23.269187494E+0								
MaxEIRPTheta=90.00000000E+0								
MaxEIRPPhi=210.00000000E+0								
MinEIRPTheta=0.00000000E+0								
MinEIRPPhi=120.00000000E+0								
MinEIRPPos=28.00000000E+0								
MaxEIRPPos=52.00000000E+0								
BackPos=10.00000000E+0								
BackPosTheta=90.00000000E+0								
BackPosPhi=30.00000000E+0								
Directivity=3.9414917433E+0								
Total Power (dBm)	0	-1.82E+01	-1.02E+01	-2.84E+00	9.07E-01	6.85E-02	-2.07E+00	-1.65E+01
	30	-2.28E+01	-1.00E+01	-6.48E-01	9.95E-01	-3.53E-01	-8.76E-01	-2.30E+01
	60	-2.06E+01	-8.45E+00	1.54E+00	5.63E-01	-2.48E-01	3.83E-02	-1.93E+01
	90	-1.94E+01	-7.07E+00	2.27E+00	5.16E-01	-6.66E-01	-2.20E-01	-1.61E+01
	120	-2.33E+01	-7.79E+00	2.17E+00	1.44E+00	-2.07E+00	-9.46E-01	-1.28E+01
	150	-2.00E+01	-9.23E+00	1.57E+00	2.66E+00	-3.36E+00	-1.94E+00	-1.15E+01
	180	-1.66E+01	-1.05E+01	3.37E-01	3.63E+00	-2.85E+00	-2.88E+00	-1.16E+01
	210	-1.57E+01	-1.13E+01	-1.43E+00	3.84E+00	-1.97E+00	-2.83E+00	-1.28E+01
	240	-1.61E+01	-1.15E+01	-2.88E+00	3.47E+00	-1.26E+00	-1.98E+00	-1.56E+01
	270	-1.45E+01	-1.01E+01	-3.49E+00	2.39E+00	-2.05E-01	-9.37E-02	-1.49E+01
	300	-1.22E+01	-7.26E+00	-4.45E+00	-3.03E-01	3.92E-01	1.84E-01	-9.26E+00
	330	-1.22E+01	-1.01E+01	-2.85E+00	1.11E+00	1.51E-02	-2.12E+00	-1.70E+01
	360	-1.82E+01	-1.02E+01	-2.84E+00	9.07E-01	6.85E-02	-2.07E+00	-1.65E+01

915 MHz

TRP=880.12067319E-3								
MaxEIRP=2.6865205357E+0								
MinEIRP=26.749749107E+0								
MaxEIRPTheta=90.00000000E+0								
MaxEIRPPhi=210.00000000E+0								
MinEIRPTheta=0.00000000E+0								
MinEIRPPhi=30.00000000E+0								
MinEIRPPos=7.00000000E+0								
MaxEIRPPos=52.00000000E+0								
BackPos=10.00000000E+0								
BackPosTheta=90.00000000E+0								
BackPosPhi=30.00000000E+0								
Directivity=3.5666502088E+0								
Total Power (dBm)	0	-2.12E+01	-1.25E+01	-2.75E+00	3.90E-01	-7.05E-01	-2.37E+00	-1.79E+01
	30	-2.67E+01	-1.14E+01	-8.33E-01	5.14E-01	-8.59E-01	-1.37E+00	-2.34E+01
	60	-2.25E+01	-9.23E+00	8.68E-01	-4.57E-02	-1.06E+00	-9.49E-01	-2.49E+01
	90	-2.42E+01	-8.46E+00	1.26E+00	-2.04E-01	-1.49E+00	-1.50E+00	-1.86E+01
	120	-2.29E+01	-9.80E+00	9.50E-01	6.62E-01	-2.61E+00	-2.34E+00	-1.54E+01
	150	-1.76E+01	-1.21E+01	1.77E-01	1.93E+00	-3.22E+00	-3.06E+00	-1.43E+01
	180	-1.57E+01	-1.31E+01	-1.19E+00	2.61E+00	-2.69E+00	-4.10E+00	-1.41E+01
	210	-1.47E+01	-1.38E+01	-3.23E+00	2.69E+00	-2.09E+00	-4.32E+00	-1.53E+01
	240	-1.53E+01	-1.37E+01	-4.95E+00	2.49E+00	-1.58E+00	-3.32E+00	-1.63E+01
	270	-1.55E+01	-1.12E+01	-5.02E+00	1.32E+00	-7.59E-01	-5.36E-01	-1.40E+01
	300	-1.30E+01	-8.84E+00	-5.10E+00	2.78E-01	-3.88E-01	4.23E-02	-1.02E+01
	330	-1.40E+01	-1.24E+01	-2.69E+00	1.04E+00	-9.91E-01	-2.44E+00	-1.90E+01
	360	-2.12E+01	-1.25E+01	-2.75E+00	3.90E-01	-7.05E-01	-2.37E+00	-1.79E+01

928 MHz

TRP=1.4022013807E+0								
MaxEIRP=2.1021809249E+0								
MinEIRP=22.318906496E+0								
MaxEIRPTheta=90.00000000E+0								
MaxEIRPPhi=180.00000000E+0								
MinEIRPTheta=180.00000000E+0								
MinEIRPPhi=90.00000000E+0								
MinEIRPPos=27.00000000E+0								
MaxEIRPPos=45.00000000E+0								
BackPos=3.00000000E+0								
BackPosTheta=90.00000000E+0								
BackPosPhi=0.00000000E+0								
Directivity=3.5043823056E+0								
Total Power (dBm)	0	-1.98E+01	-1.59E+01	-3.47E+00	2.87E-01	-7.39E-01	-2.91E+00	-1.63E+01
	30	-2.17E+01	-1.38E+01	-1.62E+00	3.54E-01	-8.44E-01	-1.98E+00	-1.73E+01
	60	-2.01E+01	-1.19E+01	-8.28E-02	-1.51E-01	-1.04E+00	-1.70E+00	-1.98E+01
	90	-1.78E+01	-1.20E+01	1.59E-01	-2.82E-01	-1.49E+00	-2.59E+00	-2.23E+01
	120	-1.55E+01	-1.48E+01	-6.78E-02	6.47E-01	-2.24E+00	-3.40E+00	-2.02E+01
	150	-1.42E+01	-1.93E+01	-1.06E+00	1.71E+00	-2.67E+00	-4.01E+00	-1.89E+01
	180	-1.43E+01	-1.95E+01	-3.03E+00	2.10E+00	-2.34E+00	-4.89E+00	-1.83E+01
	210	-1.44E+01	-1.88E+01	-5.37E+00	1.90E+00	-2.23E+00	-5.47E+00	-2.01E+01
	240	-1.64E+01	-1.97E+01	-7.18E+00	1.75E+00	-1.72E+00	-4.72E+00	-2.04E+01
	270	-1.69E+01	-1.33E+01	-6.92E+00	5.78E-01	-4.55E-01	-1.43E+00	-1.49E+01
	300	-1.43E+01	-1.06E+01	-6.53E+00	3.47E-01	2.86E-02	-2.73E-01	-1.01E+01
	330	-1.52E+01	-1.66E+01	-4.00E+00	6.61E-01	-9.37E-01	-3.23E+00	-1.79E+01
	360	-1.98E+01	-1.59E+01	-3.47E+00	2.87E-01	-7.39E-01	-2.91E+00	-1.63E+01



902 MHz

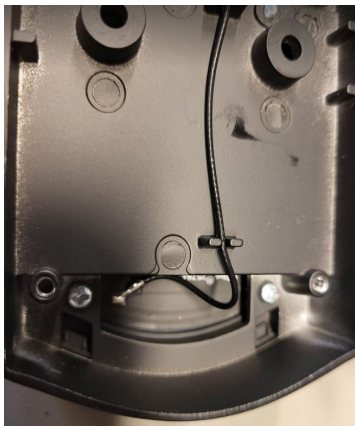
TRP=7.99018886E-0					
MaxERP=3.83658488E-0					-3.84
MinERP=23.10607758E-0					
MinERP(Tot)=0.00000000E+0					
MaxERP(Ph)=70.00000000E-0					
MinERP(Tot)=0.00000000E+0					
MinERP(Ph)=0.00000000E+0					
MaxERP(Ph)=1.00000000E+0					
MaxERP(Ph)=0.00000000E+0					
BackPwr=24.00000000E+0					
BackPwr(Tot)=0.00000000E+0					
BackPwr(Ph)=0.00000000E+0					
Directivity=4.137962593E-0					
Total Power (dBm)					
0	-1.47E+0	-0.38E+0	-1.77E+0	-0.79E+0	-0.87E+0
30	-1.37E+0	-1.07E+0	-1.01E+0	-1.37E+0	-0.50E+0
60	-1.41E+0	-1.46E+0	-5.85E+0	-0.53E+0	-5.43E+0
90	-1.30E+0	-1.19E+0	-4.47E+0	-8.09E+0	-1.24E+0
120	-1.50E+0	-1.24E+0	-4.71E+0	-7.43E+0	-4.63E+0
150	-2.05E+0	-1.88E+0	-5.70E+0	-8.77E+0	-4.00E+0
180	-2.18E+0	-1.28E+0	-7.85E+0	-1.60E+0	-5.01E+0
210	-1.73E+0	-1.25E+0	-1.09E+0	-1.27E+0	-7.34E+0
240	-1.63E+0	-1.25E+0	-1.08E+0	-5.43E+0	-8.38E+0
270	-1.68E+0	-1.39E+0	-1.07E+0	-3.84E+0	-6.11E+0
300	-1.50E+0	-1.47E+0	-1.21E+0	-4.34E+0	-5.66E+0
330	-1.72E+0	-1.78E+0	-1.01E+0	-5.43E+0	-6.35E+0
360	-1.77E+0	-0.88E+0	-1.77E+0	-1.10E+0	-0.79E+0

915 MHz

TRP=10.55701206E-0					
MaxERP=5.816974984E-0					-5.82
MinERP=78.102360207E-0					
MinERP(Tot)=0.00000000E+0					
MaxERP(Ph)=70.00000000E-0					
MinERP(Tot)=0.00000000E+0					
MinERP(Ph)=180.00000000E+0					
MaxERP(Ph)=2.00000000E+0					
MaxERP(Ph)=0.00000000E+0					
BackPwr=74.00000000E+0					
BackPwr(Tot)=170.00000000E+0					
BackPwr(Ph)=0.00000000E+0					
Directivity=7.410067703E-0					
Total Power (dBm)					
0	-2.31E+0	-3.27E+0	-1.77E+0	-3.41E+0	-1.73E+0
30	-1.84E+0	-1.75E+0	-1.11E+0	-1.54E+0	-1.53E+0
60	-1.64E+0	-1.43E+0	-1.46E+0	-1.09E+0	-1.68E+0
90	-1.54E+0	-1.38E+0	-6.34E+0	-0.40E+0	-2.00E+0
120	-1.60E+0	-1.46E+0	-5.82E+0	-0.01E+0	-2.12E+0
150	-2.02E+0	-1.61E+0	-6.91E+0	-1.00E+0	-1.67E+0
180	-2.51E+0	-1.51E+0	-9.76E+0	-1.15E+0	-1.80E+0
210	-1.90E+0	-1.53E+0	-1.37E+0	-1.00E+0	-1.08E+0
240	-1.66E+0	-1.53E+0	-1.47E+0	-8.45E+0	-1.03E+0
270	-1.68E+0	-1.70E+0	-1.41E+0	-6.95E+0	-9.31E+0
300	-1.91E+0	-2.08E+0	-1.48E+0	-6.95E+0	-8.69E+0
330	-2.07E+0	-2.32E+0	-1.28E+0	-8.11E+0	-8.95E+0
360	-2.11E+0	-2.37E+0	-1.77E+0	-8.11E+0	-1.73E+0

928 MHz

TRP=13.358952077E-0					
MaxERP=6.655119781E-0					-6.63
MinERP=26.115089222E-0					
MinERP(Tot)=0.00000000E+0					
MaxERP(Ph)=120.00000000E-0					
MinERP(Tot)=0.00000000E+0					
MinERP(Ph)=90.00000000E+0					
MaxERP(Ph)=25.00000000E+0					
MaxERP(Ph)=0.00000000E+0					
BackPwr=74.00000000E+0					
BackPwr(Tot)=170.00000000E+0					
BackPwr(Ph)=0.00000000E+0					
Directivity=7.940002031E-0					
Total Power (dBm)					
0	-2.34E+0	-2.47E+0	-1.74E+0	-1.66E+0	-1.70E+0
30	-2.88E+0	-2.75E+0	-1.28E+0	-1.56E+0	-1.93E+0
60	-2.82E+0	-1.97E+0	-0.97E+0	-2.33E+0	-1.37E+0
90	-1.69E+0	-1.83E+0	-8.95E+0	-1.14E+0	-2.61E+0
120	-1.70E+0	-1.88E+0	-8.63E+0	-1.15E+0	-2.77E+0
150	-1.98E+0	-1.91E+0	-9.77E+0	-1.33E+0	-1.85E+0
180	-2.56E+0	-1.72E+0	-1.21E+0	-1.58E+0	-1.69E+0
210	-2.09E+0	-1.67E+0	-1.60E+0	-1.79E+0	-1.88E+0
240	-1.84E+0	-1.74E+0	-1.69E+0	-1.24E+0	-1.47E+0
270	-2.02E+0	-2.01E+0	-1.64E+0	-1.06E+0	-1.73E+0
300	-1.95E+0	-1.73E+0	-1.03E+0	-1.25E+0	-1.25E+0
330	-2.02E+0	-2.43E+0	-1.55E+0	-1.07E+0	-1.53E+0
360	-2.34E+0	-2.47E+0	-1.74E+0	-1.66E+0	-1.70E+0



902 MHz

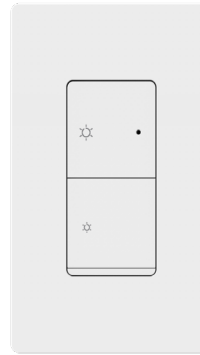
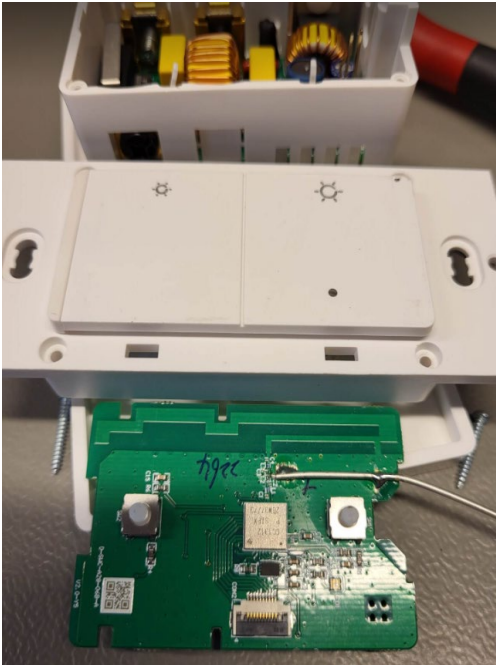
TRP=10.691519189E+0											
MaxEIRP=3.7728802864E+0											
MinEIRP=24.445810333E+0											
MaxEIRPTheta=150.00000000E+0											
MinEIRPPhi=0.00000000E+0											
MaxEIRPTheta=120.00000000E+0											
MinEIRPPhi=240.00000000E+0											
MaxEIRPTheta=60.00000000E+0											
MinEIRPPhi=5.00000000E+0											
BackPos=13.00000000E+0											
BackPosTheta=30.00000000E+0											
BackPosPhi=180.00000000E+0											
Directivity=6.9189299028E+0											
Total Power (dBm)											
0	-6.81E+00	-7.66E+00	-6.00E+00	-6.58E+00	-1.39E+01	-3.77E+00	-5.66E+00				-3.77
30	-9.40E+00	-9.27E+00	-6.11E+00	-8.67E+00	-1.49E+01	-5.20E+00	-9.13E+00				
60	-1.63E+01	-1.29E+01	-9.21E+00	-1.88E+01	-1.47E+01	-9.64E+00	-1.72E+01				
90	-1.77E+01	-1.27E+01	-1.43E+01	-1.74E+01	-1.86E+01	-2.12E+01	-1.52E+01				
120	-9.99E+00	-8.09E+00	-1.31E+01	-1.32E+01	-2.21E+01	-1.61E+01	-8.85E+00				
150	-6.91E+00	-6.20E+00	-1.13E+01	-1.27E+01	-1.67E+01	-1.21E+01	-6.84E+00				
180	-6.81E+00	-6.29E+00	-1.14E+01	-1.73E+01	-1.41E+01	-1.25E+01	-7.16E+00				
210	-9.29E+00	-8.54E+00	-1.31E+01	-2.06E+01	-1.59E+01	-1.66E+01	-9.79E+00				
240	-1.65E+01	-1.45E+01	-2.01E+01	-1.83E+01	-2.44E+01	-1.56E+01	-1.75E+01				
270	-1.74E+01	-1.89E+01	-1.60E+01	-1.67E+01	-1.83E+01	-9.99E+00	-1.67E+01				
300	-1.01E+01	-1.14E+01	-9.99E+00	-1.27E+01	-1.39E+01	-7.20E+00	-8.51E+00				
330	-7.19E+00	-8.40E+00	-8.00E+00	-8.66E+00	-1.28E+01	-5.18E+00	-5.76E+00				
360	-6.81E+00	-7.66E+00	-6.00E+00	-6.58E+00	-1.39E+01	-3.77E+00	-5.66E+00				

915 MHz

TRP=10.346885113E+0											
MaxEIRP=4.5117768794E+0											
MinEIRP=23.989747508E+0											
MaxEIRPTheta=150.00000000E+0											
MinEIRPPhi=0.00000000E+0											
MaxEIRPTheta=120.00000000E+0											
MinEIRPPhi=240.00000000E+0											
MaxEIRPTheta=60.00000000E+0											
MinEIRPPhi=5.00000000E+0											
BackPos=13.00000000E+0											
BackPosTheta=30.00000000E+0											
BackPosPhi=180.00000000E+0											
Directivity=5.8351082345E+0											
Total Power (dBm)											
0	-6.28E+00	-7.55E+00	-5.82E+00	-5.61E+00	-1.25E+01	-4.51E+00	-5.70E+00				-4.51
30	-8.31E+00	-9.21E+00	-6.18E+00	-8.01E+00	-1.55E+01	-5.90E+00	-8.34E+00				
60	-1.38E+01	-1.33E+01	-9.49E+00	-1.58E+01	-1.54E+01	-9.98E+00	-1.52E+01				
90	-2.03E+01	-1.32E+01	-1.52E+01	-1.73E+01	-1.86E+01	-1.94E+01	-1.57E+01				
120	-1.06E+01	-8.43E+00	-1.36E+01	-1.22E+01	-2.17E+01	-1.52E+01	-8.89E+00				
150	-6.78E+00	-6.26E+00	-1.14E+01	-1.15E+01	-1.77E+01	-1.13E+01	-6.51E+00				
180	-6.19E+00	-6.28E+00	-1.10E+01	-1.69E+01	-1.42E+01	-1.17E+01	-6.36E+00				
210	-8.08E+00	-8.19E+00	-1.13E+01	-1.60E+01	-1.75E+01	-1.65E+01	-8.68E+00				
240	-1.41E+01	-1.27E+01	-1.61E+01	-1.50E+01	-2.40E+01	-1.72E+01	-1.54E+01				
270	-2.12E+01	-1.53E+01	-1.59E+01	-1.40E+01	-1.93E+01	-1.02E+01	-1.81E+01				
300	-1.06E+01	-1.07E+01	-1.00E+01	-9.73E+00	-1.40E+01	-7.17E+00	-9.58E+00				
330	-7.15E+00	-8.04E+00	-7.25E+00	-6.95E+00	-1.18E+01	-5.68E+00	-6.25E+00				
360	-6.28E+00	-7.55E+00	-5.82E+00	-5.61E+00	-1.25E+01	-4.51E+00	-5.70E+00				

928 MHz

TRP=9.8040567070E+0											
MaxEIRP=4.6241835713E+0											
MinEIRP=25.889351095E+0											
MaxEIRPTheta=90.00000000E+0											
MinEIRPPhi=0.00000000E+0											
MaxEIRPTheta=120.00000000E+0											
MinEIRPPhi=90.00000000E+0											
MaxEIRPTheta=60.00000000E+0											
MinEIRPPhi=21.00000000E+0											
BackPos=5.00000000E+0											
BackPosTheta=90.00000000E+0											
BackPosPhi=180.00000000E+0											
Directivity=5.1798711358E+0											
Total Power (dBm)											
0	-6.80E+00	-7.92E+00	-4.92E+00	-4.62E+00	-1.11E+01	-5.08E+00	-5.73E+00				-4.62
30	-8.36E+00	-8.88E+00	-4.72E+00	-6.27E+00	-1.35E+01	-6.37E+00	-8.04E+00				
60	-1.32E+01	-1.21E+01	-7.41E+00	-1.31E+01	-1.40E+01	-1.03E+01	-1.47E+01				
90	-2.59E+01	-1.19E+01	-1.21E+01	-1.84E+01	-1.88E+01	-2.11E+01	-1.79E+01				
120	-1.18E+01	-8.07E+00	-1.33E+01	-1.19E+01	-1.84E+01	-1.53E+01	-9.45E+00				
150	-7.37E+00	-5.91E+00	-1.13E+01	-1.07E+01	-1.52E+01	-1.13E+01	-6.27E+00				
180	-6.16E+00	-5.62E+00	-1.01E+01	-1.46E+01	-1.28E+01	-1.14E+01	-5.86E+00				
210	-7.46E+00	-6.92E+00	-1.06E+01	-1.38E+01	-1.56E+01	-1.64E+01	-8.23E+00				
240	-1.25E+01	-1.07E+01	-1.59E+01	-1.40E+01	-2.43E+01	-1.93E+01	-1.52E+01				
270	-2.55E+01	-1.67E+01	-1.76E+01	-1.54E+01	-2.03E+01	-1.00E+01	-1.78E+01				
300	-1.26E+01	-1.31E+01	-1.04E+01	-9.82E+00	-1.36E+01	-7.02E+00	-9.75E+00				
330	-8.31E+00	-9.66E+00	-7.20E+00	-6.22E+00	-1.11E+01	-5.85E+00	-6.64E+00				
360	-6.80E+00	-7.92E+00	-4.92E+00	-4.62E+00	-1.11E+01	-5.08E+00	-5.73E+00				



902 MHz

TRP=12.871633187E+0							
MaxEIRP=8.9604220590E+0							-8.96
MinEIRP=25.975850558E+0							
MaxEIRPTheta=0.000000000E+0							
MaxEIRPPhi=330.000000000E+0							
MinEIRPTheta=0.000000000E+0							
MinEIRPPhi=330.000000000E+0							
MinEIRPPos=79.000000000E+0							
MaxEIRPPos=77.000000000E+0							
BackPos=41.000000000E+0							
BackPosTheta=180.000000000E+0							
BackPosPhi=150.000000000E+0							
Directivity=3.9112111284E+0							
Total Power (dBm)							
0	-9.72E+0	-1.16E+1	-2.24E+1	-1.48E+1	-1.37E+1	-1.35E+1	-1.31E+1
30	-1.22E+1	-1.35E+1	-1.59E+1	-1.18E+1	-1.64E+1	-1.74E+1	-1.49E+1
60	-1.39E+1	-1.47E+1	-1.17E+1	-1.03E+1	-1.66E+1	-2.42E+1	-1.89E+1
90	-1.16E+1	-1.28E+1	-1.03E+1	-1.04E+1	-1.56E+1	-1.74E+1	-2.05E+1
120	-9.85E+0	-1.17E+1	-9.81E+0	-1.09E+1	-1.47E+1	-1.25E+1	-1.51E+1
150	-9.33E+0	-1.14E+1	-1.01E+1	-1.22E+1	-1.48E+1	-1.02E+1	-1.22E+1
180	-1.03E+1	-1.17E+1	-1.11E+1	-1.39E+1	-1.83E+1	-9.48E+0	-1.19E+1
210	-1.29E+1	-1.31E+1	-1.30E+1	-1.34E+1	-2.24E+1	-1.05E+1	-1.36E+1
240	-1.54E+1	-1.52E+1	-1.48E+1	-1.34E+1	-1.60E+1	-1.30E+1	-1.75E+1
270	-1.26E+1	-1.52E+1	-1.70E+1	-1.39E+1	-1.39E+1	-1.27E+1	-2.47E+1
300	-9.54E+0	-1.20E+1	-2.19E+1	-1.49E+1	-1.26E+1	-1.11E+1	-1.74E+1
330	-8.96E+0	-1.07E+1	-2.60E+1	-1.62E+1	-1.20E+1	-1.10E+1	-1.42E+1
360	-9.72E+0	-1.16E+1	-2.24E+1	-1.48E+1	-1.37E+1	-1.35E+1	-1.31E+1

915 MHz

TRP=13.428963841E+0							
MaxEIRP=9.4772408927E+0							-9.48
MinEIRP=25.798501521E+0							
MaxEIRPTheta=150.000000000E+0							
MaxEIRPPhi=180.000000000E+0							
MinEIRPTheta=60.000000000E+0							
MinEIRPPhi=0.000000000E+0							
MinEIRPPos=2.000000000E+0							
MaxEIRPPos=47.000000000E+0							
BackPos=1.000000000E+0							
BackPosTheta=30.000000000E+0							
BackPosPhi=0.000000000E+0							
Directivity=3.9517229480E+0							
Total Power (dBm)							
0	-1.12E+1	-1.35E+1	-2.58E+1	-1.57E+1	-1.59E+1	-1.26E+1	-1.33E+1
30	-1.31E+1	-1.61E+1	-1.61E+1	-1.28E+1	-2.05E+1	-1.47E+1	-1.44E+1
60	-1.35E+1	-1.67E+1	-1.19E+1	-1.13E+1	-2.06E+1	-2.04E+1	-1.87E+1
90	-1.15E+1	-1.44E+1	-1.09E+1	-1.14E+1	-1.77E+1	-1.79E+1	-2.10E+1
120	-9.68E+0	-1.34E+1	-1.07E+1	-1.17E+1	-1.64E+1	-1.23E+1	-1.61E+1
150	-9.66E+0	-1.34E+1	-1.11E+1	-1.30E+1	-1.61E+1	-1.03E+1	-1.33E+1
180	-1.13E+1	-1.37E+1	-1.26E+1	-1.62E+1	-1.95E+1	-9.48E+0	-1.25E+1
210	-1.40E+1	-1.38E+1	-1.50E+1	-1.44E+1	-2.04E+1	-9.78E+0	-1.36E+1
240	-1.51E+1	-1.44E+1	-1.71E+1	-1.32E+1	-1.58E+1	-1.18E+1	-1.70E+1
270	-1.27E+1	-1.41E+1	-1.83E+1	-1.35E+1	-1.36E+1	-1.20E+1	-2.31E+1
300	-1.00E+1	-1.26E+1	-2.22E+1	-1.44E+1	-1.28E+1	-1.08E+1	-1.87E+1
330	-9.70E+0	-1.15E+1	-2.42E+1	-1.56E+1	-1.30E+1	-1.10E+1	-1.54E+1
360	-1.12E+1	-1.35E+1	-2.58E+1	-1.57E+1	-1.59E+1	-1.26E+1	-1.33E+1

928 MHz

TRP=13.012413780E+0							
MaxEIRP=8.8505481033E+0							-8.56
MinEIRP=23.261951951E+0							
MaxEIRPTheta=0.000000000E+0							
MaxEIRPPhi=120.000000000E+0							
MinEIRPTheta=60.000000000E+0							
MinEIRPPhi=0.000000000E+0							
MinEIRPPos=2.000000000E+0							
MaxEIRPPos=28.000000000E+0							
BackPos=76.000000000E+0							
BackPosTheta=180.000000000E+0							
BackPosPhi=300.000000000E+0							
Directivity=4.4618656766E+0							
Total Power (dBm)							
0	-1.18E+1	-1.34E+1	-2.33E+1	-1.50E+1	-1.78E+1	-1.21E+1	-1.42E+1
30	-1.29E+1	-1.61E+1	-1.49E+1	-1.19E+1	-2.04E+1	-1.36E+1	-1.43E+1
60	-1.21E+1	-1.63E+1	-1.14E+1	-1.06E+1	-2.09E+1	-1.88E+1	-1.62E+1
90	-1.00E+1	-1.45E+1	-1.05E+1	-1.09E+1	-2.02E+1	-2.09E+1	-1.82E+1
120	-8.55E+0	-1.38E+1	-9.80E+0	-1.14E+1	-1.99E+1	-1.50E+1	-1.65E+1
150	-9.23E+0	-1.40E+1	-1.01E+1	-1.31E+1	-1.81E+1	-1.21E+1	-1.37E+1
180	-1.15E+1	-1.44E+1	-1.16E+1	-1.82E+1	-1.93E+1	-1.03E+1	-1.24E+1
210	-1.39E+1	-1.40E+1	-1.40E+1	-1.45E+1	-1.70E+1	-1.03E+1	-1.22E+1
240	-1.43E+1	-1.20E+1	-1.61E+1	-1.25E+1	-1.30E+1	-1.10E+1	-1.40E+1
270	-1.21E+1	-1.24E+1	-1.72E+1	-1.23E+1	-1.21E+1	-1.06E+1	-1.65E+1
300	-9.58E+0	-1.14E+1	-1.97E+1	-1.28E+1	-1.23E+1	-1.03E+1	-1.77E+1
330	-9.49E+0	-1.10E+1	-2.06E+1	-1.39E+1	-1.37E+1	-1.09E+1	-1.66E+1
360	-1.18E+1	-1.34E+1	-2.33E+1	-1.50E+1	-1.78E+1	-1.21E+1	-1.42E+1



902 MHz

TRP=7.7136584096E+0							
MaxEIRP=3.9272232133E-3							
MinEIRP=25.095028358E+0							
MaxEIRPTheta=0.0000000000E+0							
MaxEIRPPhi=330.00000000E+0							
MinEIRPTheta=120.00000000E+0							
MinEIRPPhi=210.00000000E+0							
MinEIRPPos=53.00000000E+0							
MaxEIRPPos=77.00000000E+0							
BackPos=41.00000000E+0							
BackPosTheta=180.00000000E+0							
BackPosPhi=150.00000000E+0							
Directivity=7.7175856328E+0							
Total Power (dBm)							
0	-2.17E+00	-3.89E+00	-1.09E+01	-1.17E+01	-8.33E+00	-6.49E+00	-7.24E+00
30	-7.35E+00	-8.89E+00	-1.26E+01	-1.06E+01	-7.57E+00	-9.07E+00	-1.46E+01
60	-1.57E+01	-1.77E+01	-1.74E+01	-1.29E+01	-1.19E+01	-1.17E+01	-1.10E+01
90	-5.27E+00	-2.08E+01	-8.59E+00	-8.15E+00	-1.95E+01	-4.45E+00	-3.69E+00
120	-1.85E+00	-1.71E+01	-3.49E+00	-5.91E+00	-1.33E+01	-3.24E+00	-1.37E+00
150	-4.95E+01	-1.86E+01	-3.26E+00	-7.72E+00	-8.01E+00	-1.77E+00	-1.81E+00
180	-1.87E+00	-7.97E+00	-6.44E+00	-1.36E+01	-1.01E+01	-1.95E+00	-3.98E+00
210	-7.15E+00	-6.37E+00	-6.01E+00	-1.79E+01	-2.51E+01	-6.82E+00	-8.18E+00
240	-1.74E+01	-9.78E+00	-7.35E+00	-1.47E+01	-1.72E+01	-1.18E+01	-6.78E+00
270	-5.05E+00	-6.79E+00	-1.77E+01	-1.51E+01	-1.69E+01	-1.21E+01	-3.47E+00
300	-1.05E+00	-3.29E+00	-9.26E+00	-1.09E+01	-7.73E+00	-1.25E+01	-2.05E+00
330	3.93E+03	-1.80E+00	-6.06E+00	-8.94E+00	-5.57E+00	-9.32E+00	-2.45E+00
360	-2.17E+00	-3.89E+00	-1.09E+01	-1.17E+01	-8.33E+00	-6.49E+00	-7.24E+00

915 MHz

TRP=9.398853932E+0							
MaxEIRP=1.7402213475E+0							
MinEIRP=25.133365192E+0							
MaxEIRPTheta=0.0000000000E+0							
MaxEIRPPhi=150.00000000E+0							
MinEIRPTheta=120.00000000E+0							
MinEIRPPhi=270.00000000E+0							
MinEIRPPos=67.00000000E+0							
MaxEIRPPos=35.00000000E+0							
BackPos=83.00000000E+0							
BackPosTheta=180.00000000E+0							
BackPosPhi=330.00000000E+0							
Directivity=7.6586322456E+0							
Total Power (dBm)							
0	-4.42E+00	-6.34E+00	-1.30E+01	-1.07E+01	-1.63E+01	-8.66E+00	-8.07E+00
30	-9.81E+00	-1.18E+01	-1.44E+01	-1.06E+01	-1.28E+01	-1.22E+01	-1.60E+01
60	-1.86E+01	-2.01E+01	-2.19E+01	-1.69E+01	-1.44E+01	-1.03E+01	-8.28E+00
90	-7.09E+00	-1.58E+01	-9.37E+00	-1.09E+01	-1.58E+01	-6.85E+00	-3.48E+00
120	-2.89E+00	-1.63E+01	-4.01E+00	-7.50E+00	-9.96E+00	-6.60E+00	-2.55E+00
150	-1.74E+00	-1.73E+01	-4.48E+00	-9.27E+00	-7.84E+00	-3.80E+00	-3.39E+00
180	-3.62E+00	-9.71E+00	-1.00E+01	-1.55E+01	-1.32E+01	-3.87E+00	-6.27E+00
210	-9.38E+00	-9.11E+00	-9.51E+00	-1.28E+01	-1.86E+01	-8.09E+00	-1.19E+01
240	-1.79E+01	-1.35E+01	-9.65E+00	-1.07E+01	-1.52E+01	-1.10E+01	-7.20E+00
270	-6.75E+00	-7.99E+00	-1.83E+01	-1.39E+01	-2.51E+01	-1.49E+01	-3.69E+00
300	-3.01E+00	-4.15E+00	-1.22E+01	-1.06E+01	-1.24E+01	-1.60E+01	-2.74E+00
330	-2.00E+00	-3.32E+00	-9.12E+00	-8.88E+00	-1.00E+01	-1.30E+01	-3.21E+00
360	-4.42E+00	-6.34E+00	-1.30E+01	-1.07E+01	-1.63E+01	-8.66E+00	-8.07E+00

928 MHz

TRP=11.075073048E+0							
MaxEIRP=3.7934910788E+0							
MinEIRP=22.600190567E+0							
MaxEIRPTheta=0.0000000000E+0							
MaxEIRPPhi=150.00000000E+0							
MinEIRPTheta=180.00000000E+0							
MinEIRPPhi=210.00000000E+0							
MinEIRPPos=55.00000000E+0							
MaxEIRPPos=33.00000000E+0							
BackPos=83.00000000E+0							
BackPosTheta=180.00000000E+0							
BackPosPhi=330.00000000E+0							
Directivity=7.281819696E+0							
Total Power (dBm)							
0	-7.86E+00	-1.04E+01	-1.55E+01	-1.05E+01	-1.78E+01	-1.01E+01	-1.04E+01
30	-1.31E+01	-1.58E+01	-1.33E+01	-9.30E+00	-1.84E+01	-9.37E+00	-2.23E+01
60	-1.75E+01	-2.24E+01	-1.54E+01	-1.58E+01	-1.71E+01	-7.50E+00	-8.41E+00
90	-8.68E+00	-1.84E+01	-1.21E+01	-1.26E+01	-1.74E+01	-8.90E+00	-4.71E+00
120	-4.67E+00	-1.65E+01	-6.15E+00	-1.07E+01	-1.07E+01	-8.25E+00	-4.68E+00
150	-3.79E+00	-1.43E+01	-6.79E+00	-1.32E+01	-1.02E+01	-5.70E+00	-5.35E+00
180	-5.51E+00	-1.07E+01	-1.38E+01	-1.77E+01	-1.76E+01	-7.66E+00	-8.46E+00
210	-9.70E+00	-1.17E+01	-1.09E+01	-1.18E+01	-1.48E+01	-1.36E+01	-2.26E+01
240	-1.69E+01	-1.71E+01	-1.15E+01	-1.14E+01	-1.59E+01	-1.19E+01	-9.00E+00
270	-9.54E+00	-9.91E+00	-2.09E+01	-1.48E+01	-2.22E+01	-1.58E+01	-5.09E+00
300	-5.94E+00	-6.84E+00	-1.57E+01	-1.01E+01	-1.32E+01	-1.33E+01	-4.11E+00
330	-5.14E+00	-6.77E+00	-1.30E+01	-8.99E+00	-1.12E+01	-1.29E+01	-4.83E+00
360	-7.86E+00	-1.04E+01	-1.55E+01	-1.05E+01	-1.78E+01	-1.01E+01	-1.04E+01

