

File name	Doc no.	Date	Page
597562201-PCBA Spec-Application Board Type 2.doc	597562201	2022-01-14	1 (3)
Issued by	Project	Doc type	Rev
Jonny Martinsson	Robotic Mower	Prod doc	D

597562201-PCBA Spec-Application Board Type 2

Product Marking of PCBA:

Each printed circuit board assembly (PCBA) shall be marked with:

- A QR code, min 10x10mm, consisting of HID and Rev according to “STD 0002” and “STD 0003”. In these standards the QR code is specified to start with HTTPS://HQR.CODES but this must be excluded. This means that the complete QR code will be as follows:

HID=xxxxxxxxxxxxxxxxxxxxxxxxxxxx&REV=yy, where x the 25 letters in HID and y is one or two letters for revision.


- Product name, (“Application Board Type 2”)
- Part number for the assembly, (“597 56 22-01”)
- Revision for the assembly, (“same as the (first) letter in PCBA revision according to BOM”)
- HID

- Radio certification text:

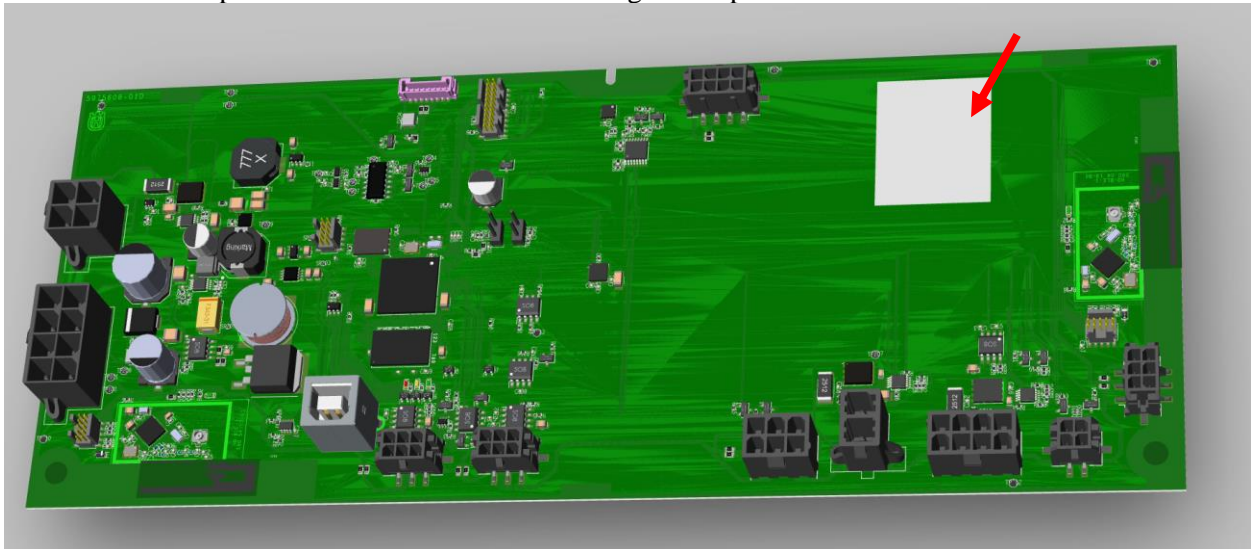
“FCC ID ZAS HQ-BLE-1F

“IC ID 23307-HQBLE1F

Example of label:

	Application Board Type 2 597 56 22-01 Rev B 200300001 FCC ID ZASHQ-BLE-1F IC:23307-HQBLE1F Supplier specific code
---	---

The label shall be placed inside the silk screen rectangle on top side of the PCB.



(If the manufacturer of the PCB wishes to place his logo on the PCBA, this could be placed in the solder mask or on a label. It must not be placed in the copper layer.)

Components, PCB's and soldering:

Standard: IPC A-610-E class 2, or latest revision issued.

Compliance with RoHS /REACH.

Item shown in BOM must not contain substances classified as "banned" or "restricted" according to Husqvarna Group Restricted Materials List (see, “www.purchase.husqvarna.com”).

Mechanical outline requirements:

Tolerances in x- and y-direction are $\pm 0.25\text{mm}$.

Production requirements:**AOI:**

- Must be used on every board after SMD and THD soldering process.
- Equipment must be able to inspect according to PCBA layout drawings supplied from Husqvarna.

X-ray:

- X-ray must be done on components that can't be verified in AOI.
- First and last board in a batch must be X-rayed. If the batch is > 500 pc, then each 500th board must also be x-rayed.

EOL FCT:

- Husqvarna will supply a PTS that every board shall be tested according to.
- Supplier/Manufacturer (or third party to them) of the PCBA shall develop and maintain a test system according to the PTS.

BT:2

- BT tests, DUT shall be tested in a radio frequency shielded box.

Washing:

- Boards shall be washed before coating.

Coating:

Coating shall be done in a robotic system. The coating process must be configured in a way that no coating residuals enters the connector pins on any of the PCBA's in the panel. Coating shall be added on both side according to the PCBA drawing.

Traceability:

All boards must be possible to be trace on board level.

Revision History

Revision	Date	Issued by	Comments
B	2020-02-21	Jonny Martinsson	First release
C	2021-03-19	Jonny Martinsson	Release for ECR and EP2
D	2021-08-18	Jonny Martinsson	Release for ECO and EP3