

<i>File name</i>	<i>Doc no.</i>	<i>Date</i>	<i>Page</i>
597427501-PCBA-CS Board Type 34 Spec	597427501	2021-06-14	1 (6)
<i>Issued by</i>	<i>Project</i>	<i>Doc type</i>	<i>Rev</i>
Amer Redzic	P3	Prod doc	D

PCBA Specification for CS Board Type 34

Product Marking of PCBA:

Each printed circuit board assembly (PCBA) shall be marked with:

- A QR code, min 10x10mm, consisting of HID and Rev according to “STD 0002” and “STD 0003”. In these standards the QR code is specified to start with [HTTPS://HQR.CODES](https://hqr.codes) but this must be excluded.

This means that the complete QR code will be as follows:


HID=xxxxxxxxxxxxxxxxxxxxxxxxxxxx&REV=yy, where x the 25 letters in HID and y is one or two letters for revision.

- Product name, (“CS Board Type 34”)
- Part number for the assembly, (“597 42 75-01”)
- Revision for the assembly, (“same as the (first) letter in PCBA revision according to BOM”)
- Radio certification text:
 - “FCC ID: ZASHQ-BLE-1E
 - “IC: 23307-HQBLE1E

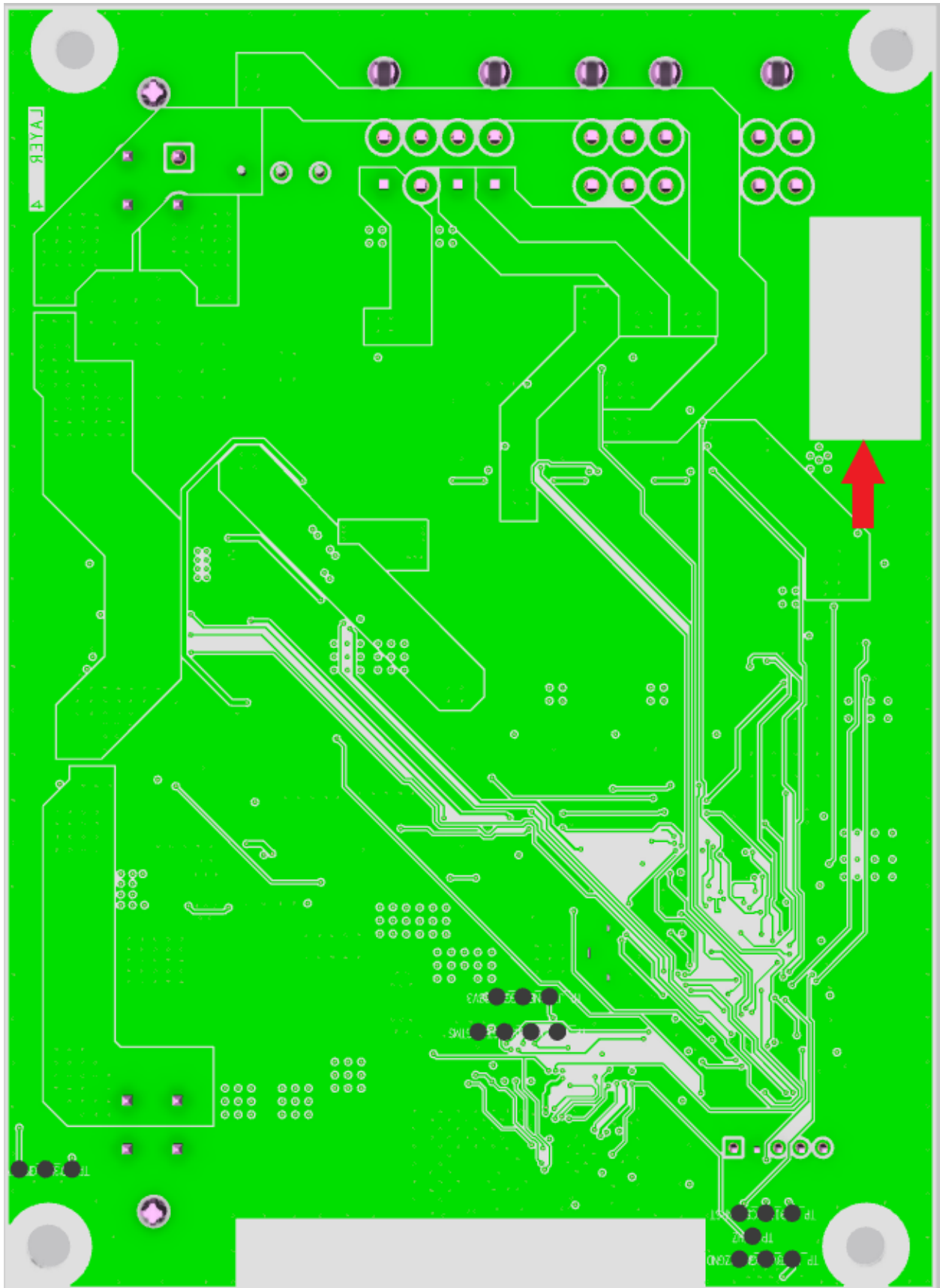
- HID

CPMS reporting of the produced part, including revision, must be done before delivery to Husqvarna, see further description in latest revision of ”597180601 CPMS specification for vendors”.

Example of marking:

 CS Board Type 34
597 42 75-01 Rev D
FCC ID: ZASHQ-BLE-1E
IC: 23307-HQBLE1E
HID: xxxxxxxxxxxxxxxxxxxxxxx

The marking shall be placed in the Silkscreen Bottom layer indicated by the **light grey** box.



Components, PCB's and soldering:

Standard: IPC A-610-E class 2, or latest revision issued.

Compliance with RoHS /REACH.

Item shown in BOM must not contain substances classified as "banned" or "restricted" according to Husqvarna Group Restricted Materials List (see, "www.purchase.husqvarna.com").

Mechanical outline requirements:

Tolerances in x- and y-direction are ± 0.25 mm.

Production requirements:

AOI:

- Must be used on every board after SMD and THD soldering process.
- Equipment must be able to inspect according to PCBA layout drawings supplied from Husqvarna.

X-ray:

- X-ray must be done on components that can't be verified in AOI.
- First and last board in a batch must be X-rayed. If the batch is > 500 pc, then each 500th board must also be x-rayed.

FCT:

- Husqvarna will supply with a PTS spec that every board must be tested according to.
- Supplier/Manufacturer (or third party to them) of the PCBA must develop a test system according to the PTS and be responsible of the maintenance of that.

Coating:

- Coating must be done in a robotic system.

Traceability:

All boards must be possible to be trace on board level.

Note, If upper points couldn't be achieved Husqvarna must be notified for further discussion.

Coating instruction:

Coating must be added on both sides of the PCB.

The coating shall be applied inside the entire pink area in pictures below.

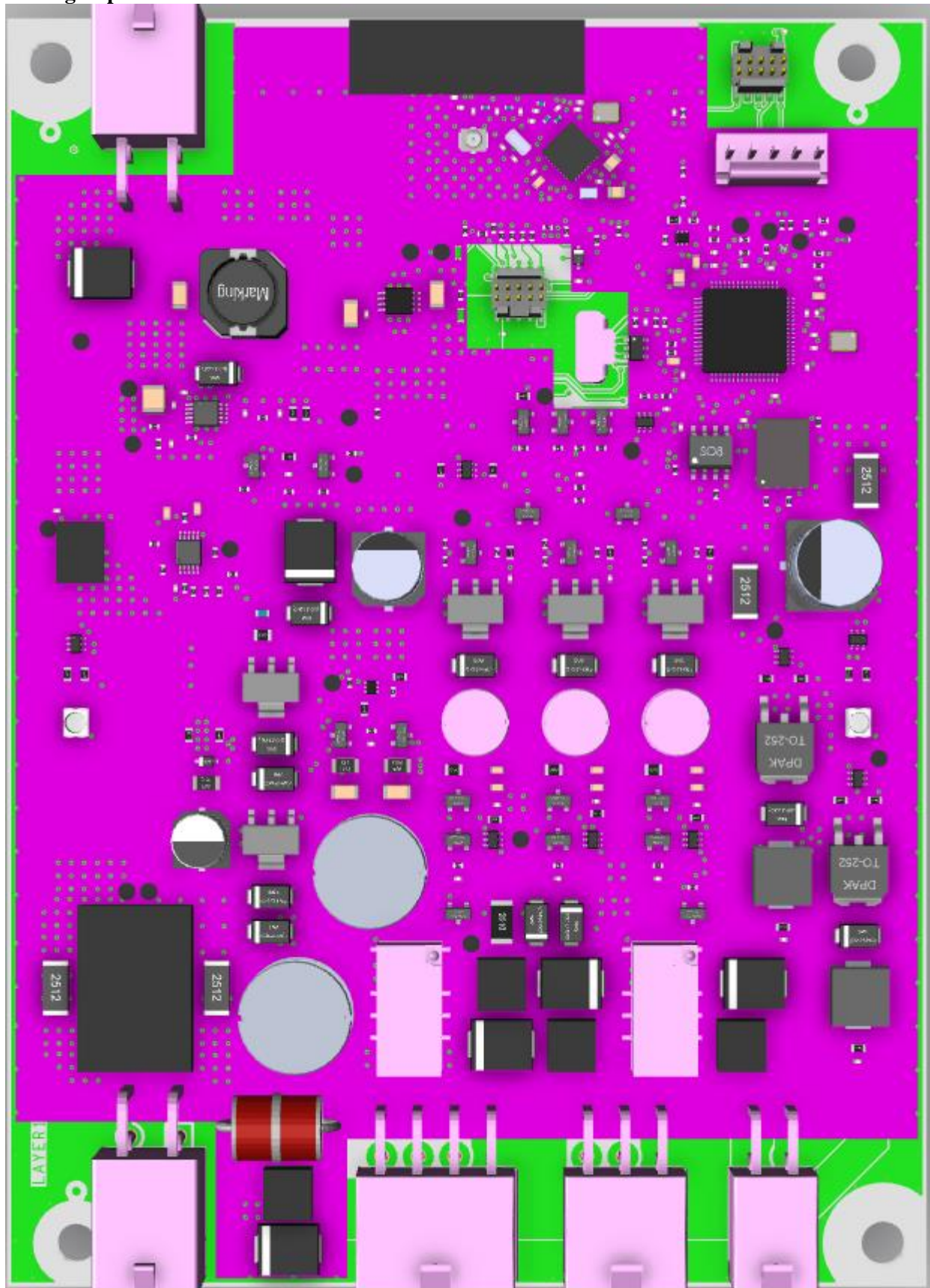
Exception: The connectors, mounting holes and test points inside the **green areas** must be excluded. Non-coated areas are also defined in Gerber and ODB++ files, see Coating Top and Coating Bottom layers.

Max allowed distance between coating and components within non-coated areas is 3.0 mm.

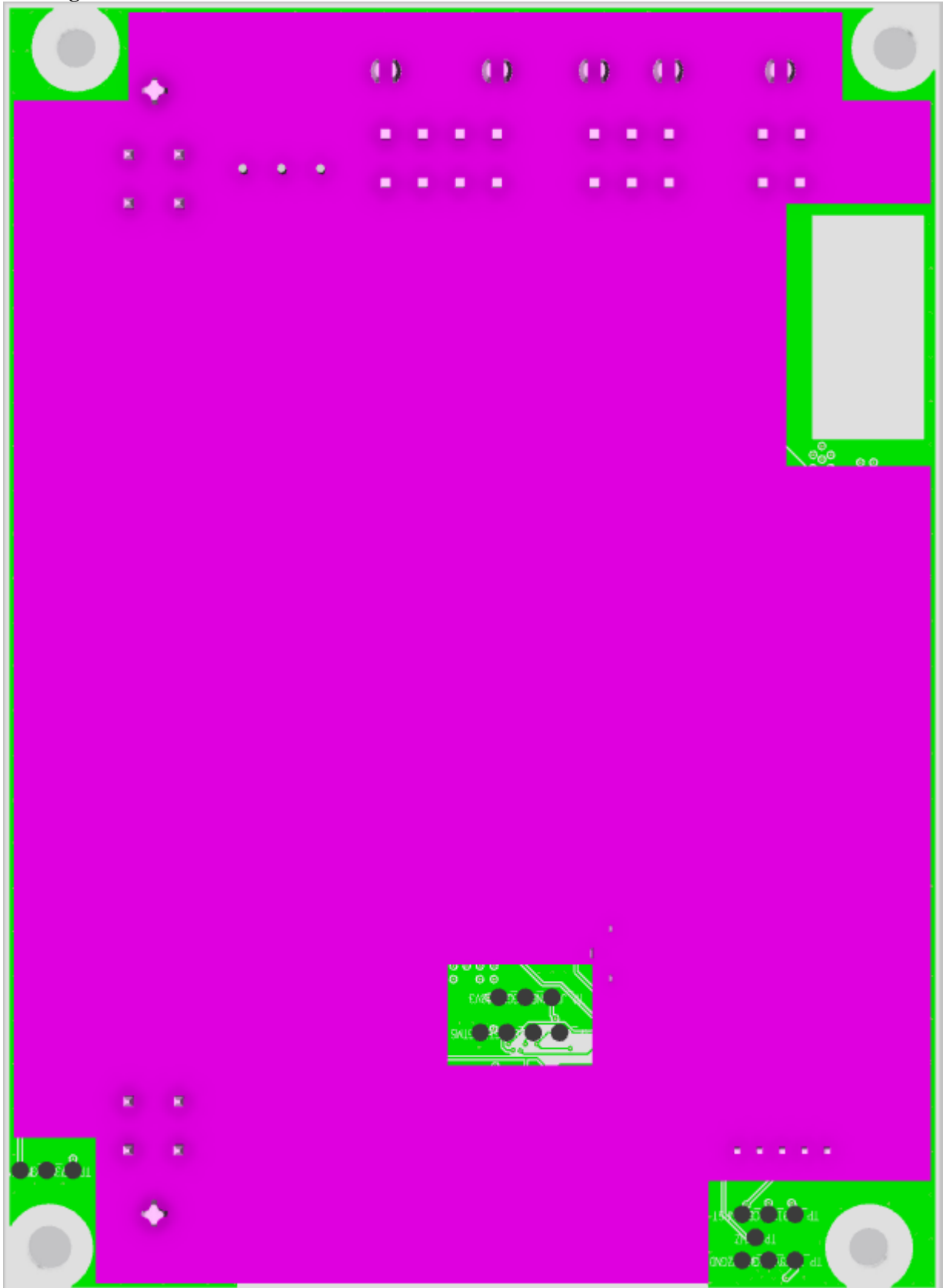
The coating process must be configured in a way that no coating residuals enters the connector pins on any of the PCBA's in the panel.

Note that all components possible to mount are shown in pictures below but not all should be mounted.

Coating Top



Coating Bottom



Revision History

Revision	Date	Issued by	Comments
A	2019-01-18	Amer Redzic	First Edition
B	2019-10-30	Amer Redzic	PCBA Rev. B
C	2021-02-16	Amer Redzic	PCBA Rev. C
D	2021-06-14	Amer Redzic	PCBA Rev. D