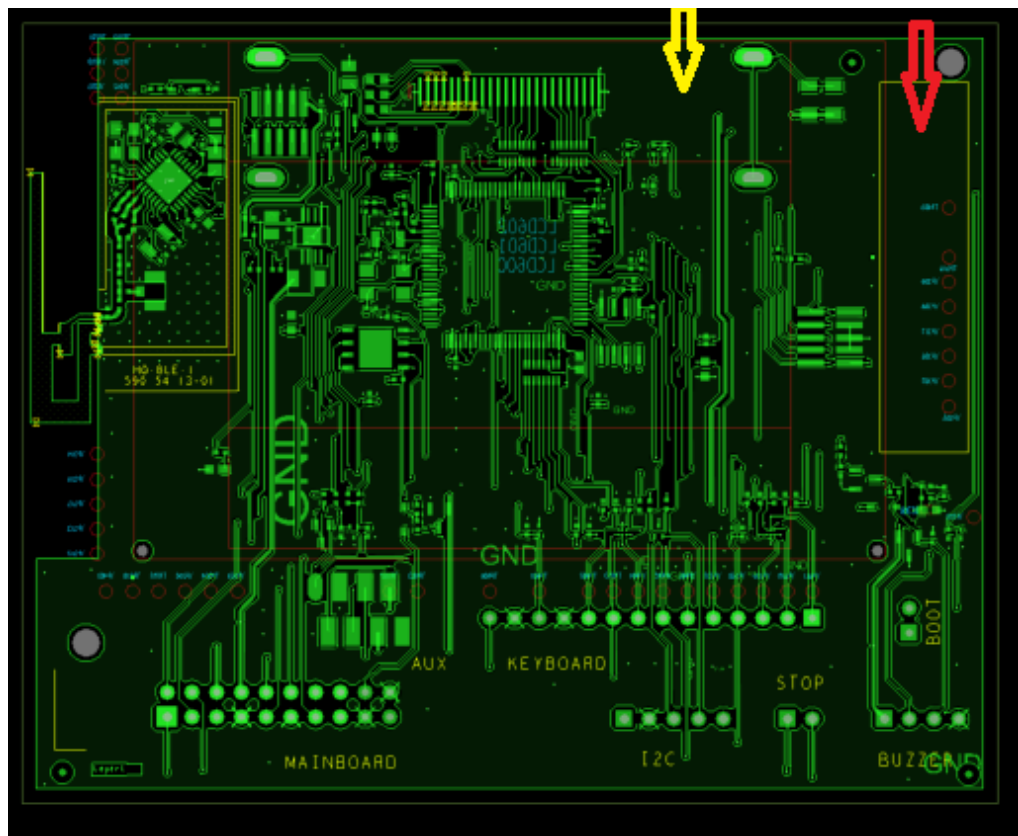


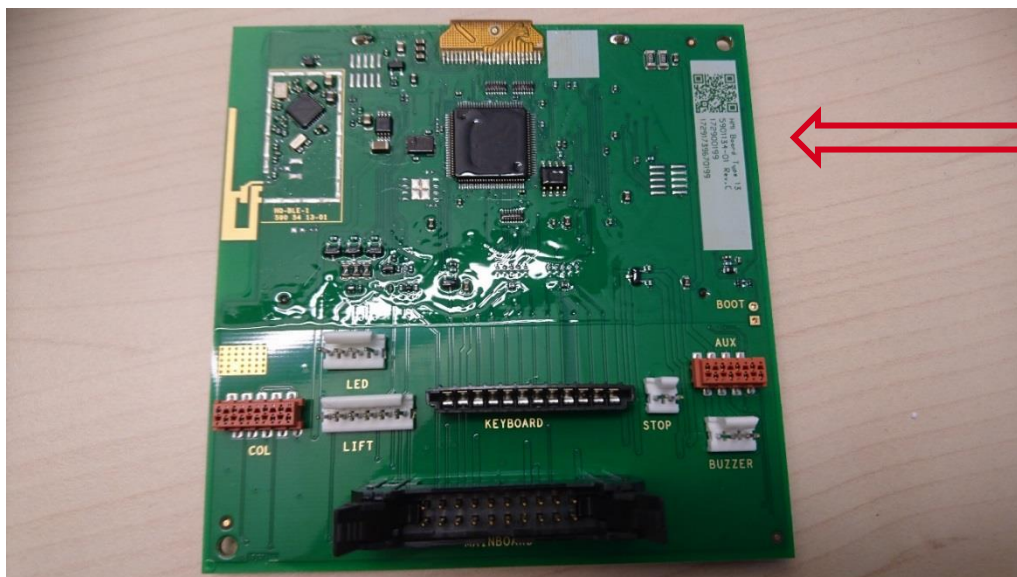
Label information for HMI board with Bluetooth®

Type 13 on PCB 590 11 35

This document is aimed to define the label information for the HMI-boards with Bluetooth functionality.

The FCC ID will be put where the red arrow points. The photograph is for reference and shows an older version where the FCC ID is not yet implemented.





PCB 590 11 35, used in HMI Board Type 13.

Product Marking of PCBA:

Each printed circuit board assembly (PCBA) shall be marked with laser marking with:

- A QR code, min 7x7mm, with total 50 positions consisting of part number and revision and serial number according to below, no delimiter. The last 30 positions can be used by supplier for their internal usage.
- Product name, ("HMI Board Type XX")
- Part number for the assembly, ("590 11 26-01")
- Revision for the assembly, ("same as the (first) letter in PCBA revision according to BOM")
- Serial number in bar code and digits, ("Production year, week, 5 digit number").

Note that year and week is in 2 digits. Also the "5 digit number" is a serial number that will be reset from zeros at beginning of every new week. Example "164300001", year = 2016, week = 43, product no 1 of that week's production.

- Radio certification text:
FCC ID ZAS HQ-BLE-1B
IC ID 23307-HQBLE1B

Labels:

Below defines the data to be put on the board. Serial numbers are examples.

QR	HMI Board Type 13 590 11 34-XX Rev X 17430000 FCC ID ZAS HQ-BLE-1B IC ID 23307-HQBLE1B Supplier specific code
----	---