

Annex 3: External photographs to  
**TEST REPORT**  
 No.: 17-1-0135301T01a







According to:  
**FCC Regulations**  
 Part 15.209  
 Part 15.247

**IC-Regulations**  
 RSS-Gen, Issue 4  
 RSS-247, Issue 2

for  
**Husqvarna AB**

**Bluetooth Low-Energy Module HQ-BLE-1**  
**582 87 12**

FCC: ZASHQ-BLE-1A  
 ISED: 23307-HQBLE1A  
 PMN: HMI Board Type 12  
 HVIN: HMI Board Type 12

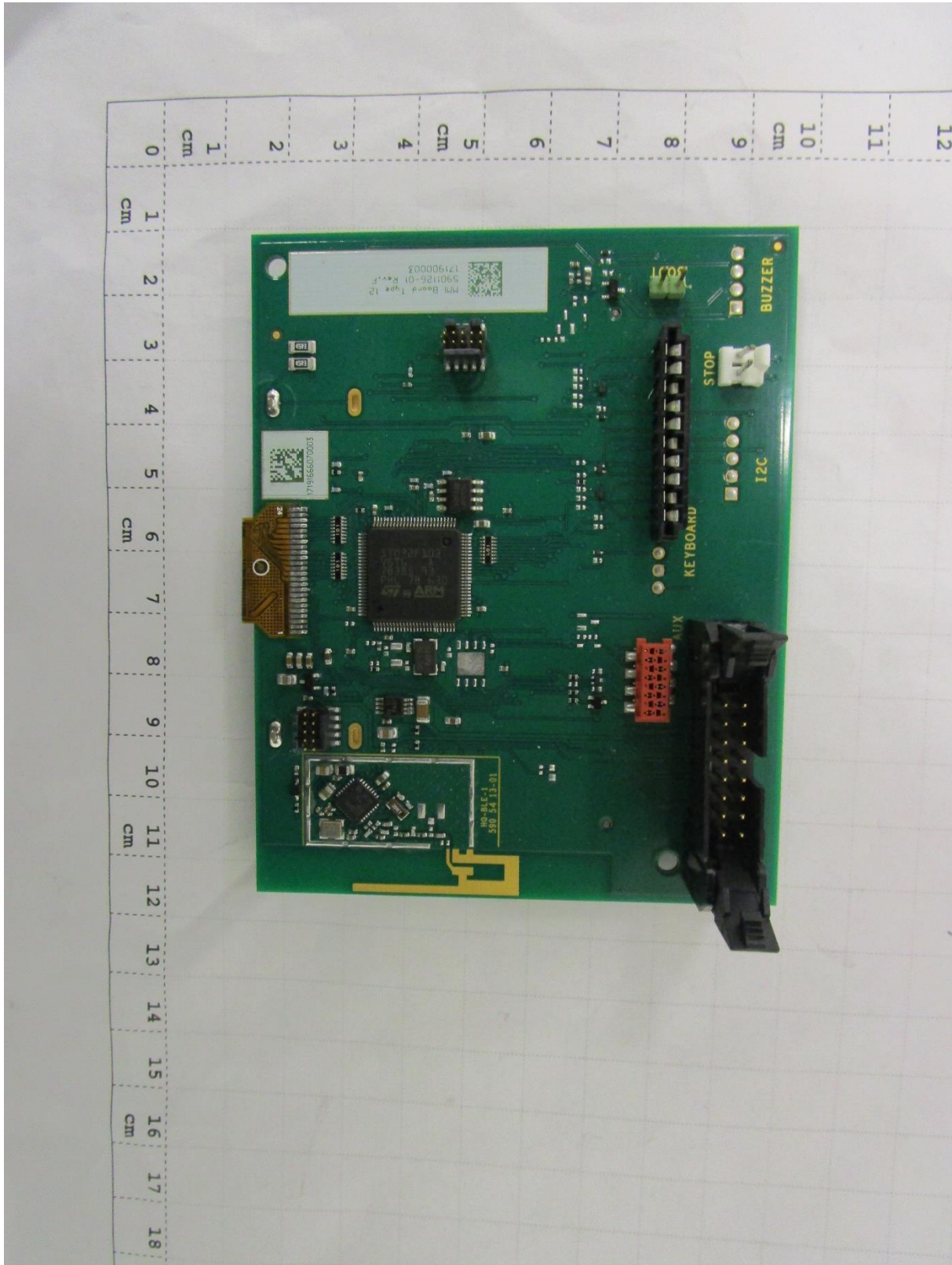
Laboratory Accreditation and Listings			
 Deutsche Akkreditierungsstelle D-PL-12047-01-01  Accredited EMC-Test Laboratory	 FEDERAL COMMUNICATIONS COMMISSION USA  MRA US-EU 0003	 Industry Canada  Reg N.: 3462D-1 Reg. No.: 3462D-2 Reg. No.: 3462D-3	 Voluntary Controls for Electromagnetic Emissions  Reg. No.: R-2666 C-2914, T-1967, G-301
 <b>WiFi</b> ALLIANCE AUTHORIZED RF LABORATORY	 <b>ctia</b> Authorized <sup>TM</sup> Test Lab Lab Code: 20011130-00		
accredited according to DIN EN ISO/IEC 17025			
<p align="center"> <b>CETECOM GmbH</b>            Laboratory Radio Communications &amp; Electromagnetic Compatibility            Im Teelbruch 116 • 45219 Essen • Germany            Registered in Essen, Germany, Reg. No.: HRB Essen 8984            Tel.: + 49 (0) 20 54 / 95 19-954 • Fax: + 49 (0) 20 54 / 95 19-964            E-mail: info@cetecom.com • Internet: www.cetecom.com         </p>			

## **Table of contents**

<b>1. TEST SETUP PHOTOGRAPHS.....</b>	<b>3</b>
1.1. EUT .....	3
1.2. Auxiliary Equipment .....	5

# 1. Test setup photographs

## 1.1. EUT





## 1.2. Auxiliary Equipment

