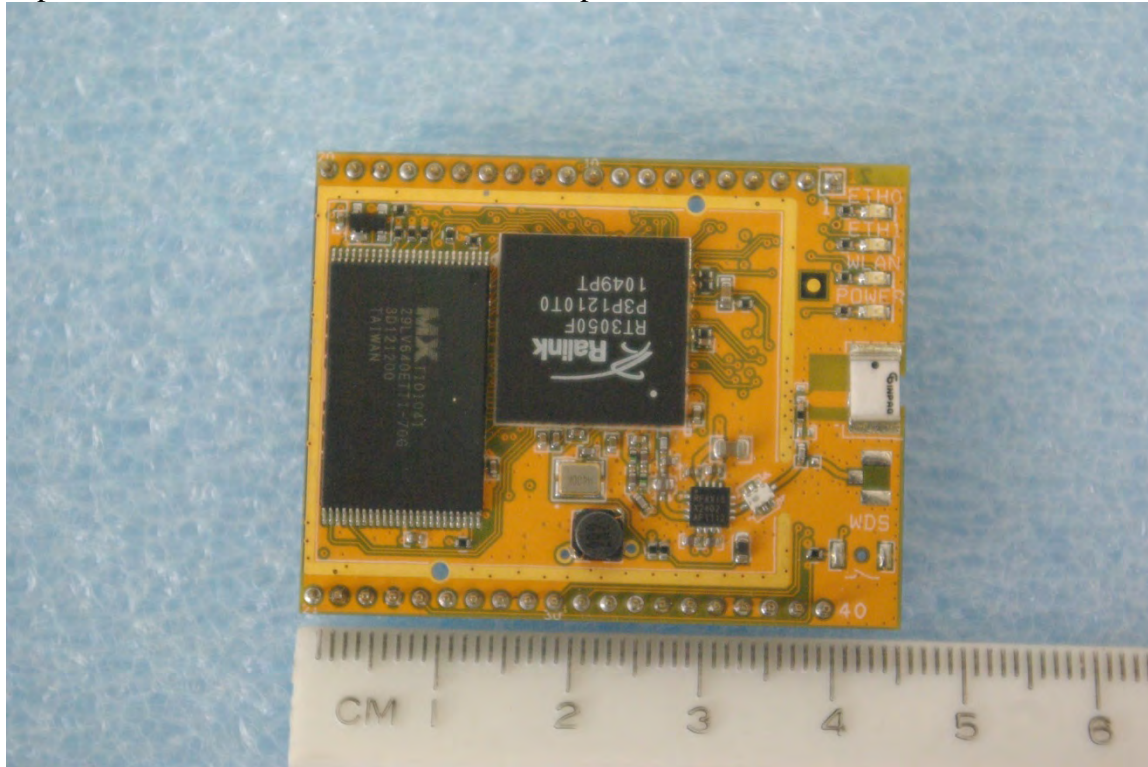
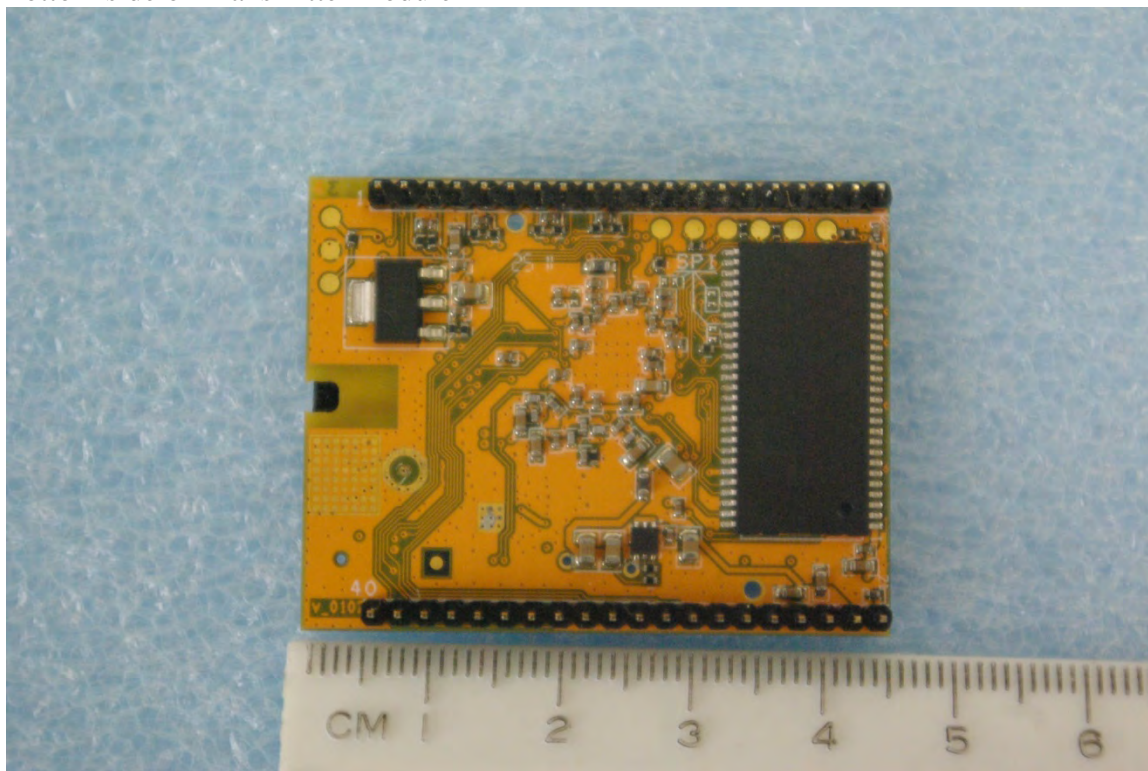


Internal photographs of equipment under test
Top of Transmitter module without shield in place



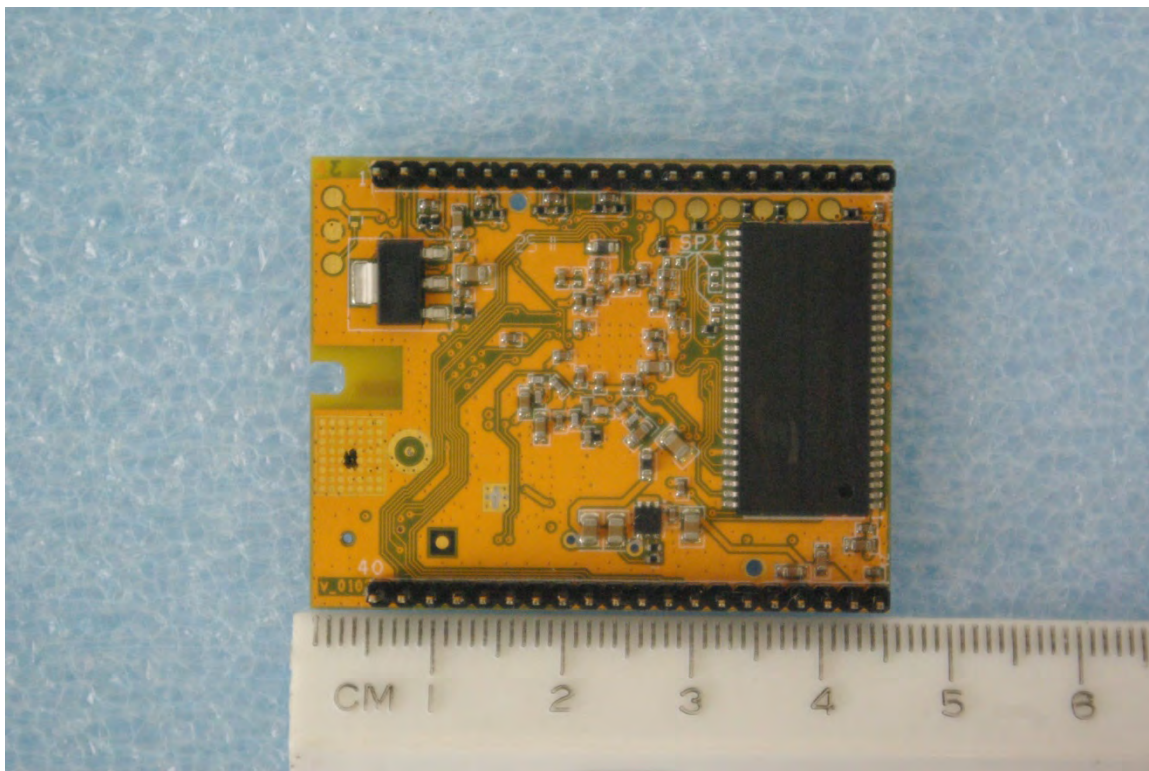
Bottom side of Transmitter module



Top of Transmitter module without shield in place



Bottom side of Transmitter module

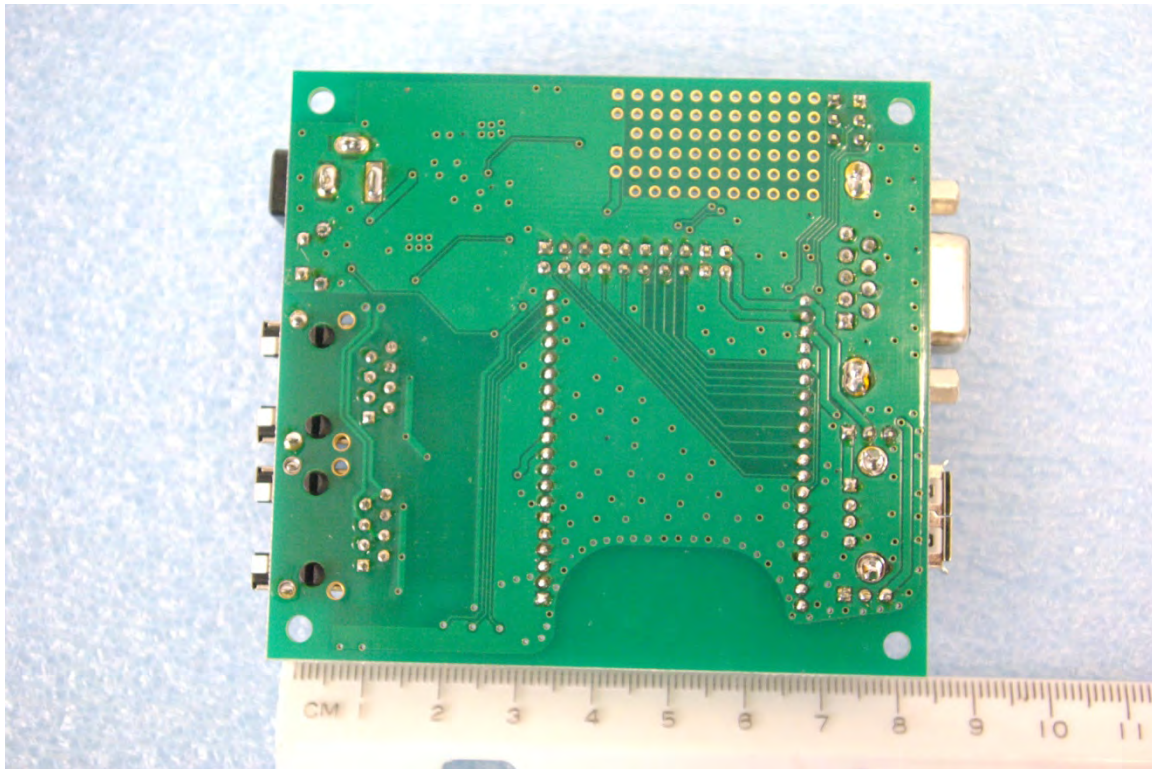
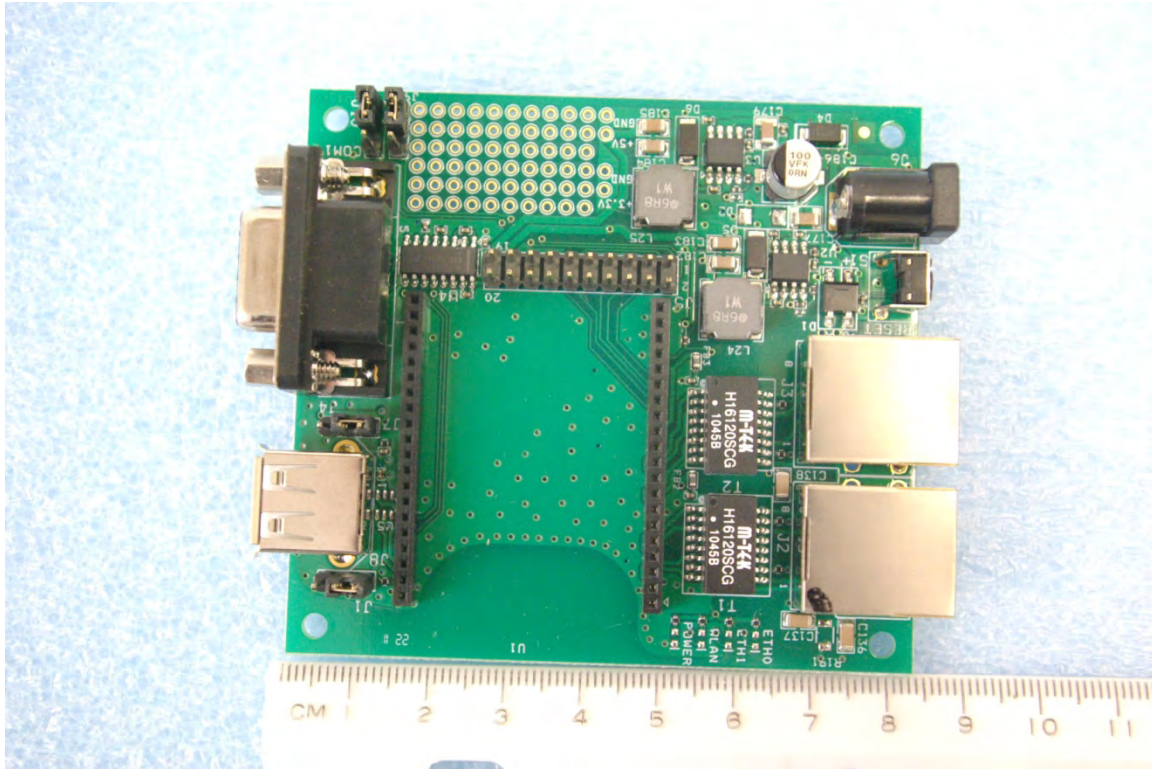


Rogers Labs, Inc.
4405 W. 259th Terrace
Louisburg, KS 66053
Phone/Fax: (913) 837-3214
Revision 1

8devices
Model: Carambola WiFi module
Test #: 111127
Test to: CFR47 (15.247)
File: IntPho CM1

SN: ENG1
FCC ID#: Z9W-CM1
Date: November 27, 2011
Page 2 of 4

support interface boards



Rogers Labs, Inc.
4405 W. 259th Terrace
Louisburg, KS 66053
Phone/Fax: (913) 837-3214
Revision 1

8devices
Model: Carambola WiFi module
Test #: 111127
Test to: CFR47 (15.247)
File: IntPho CM1

SN: ENG1
FCC ID#: Z9W-CM1
Date: November 27, 2011
Page 3 of 4

