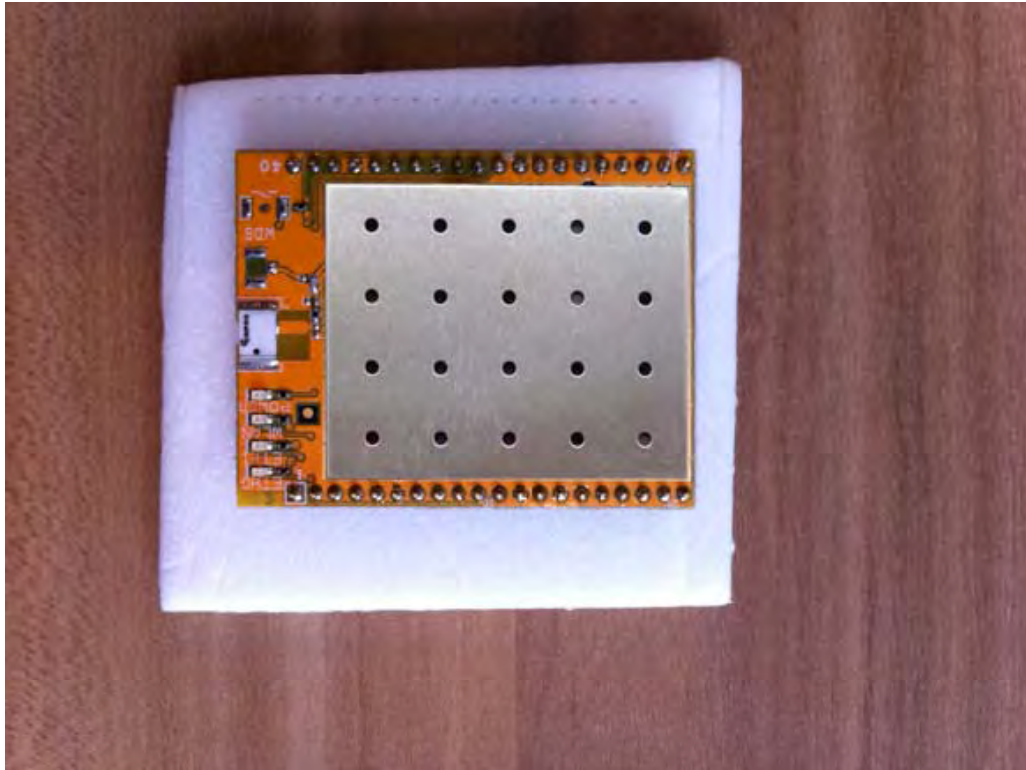
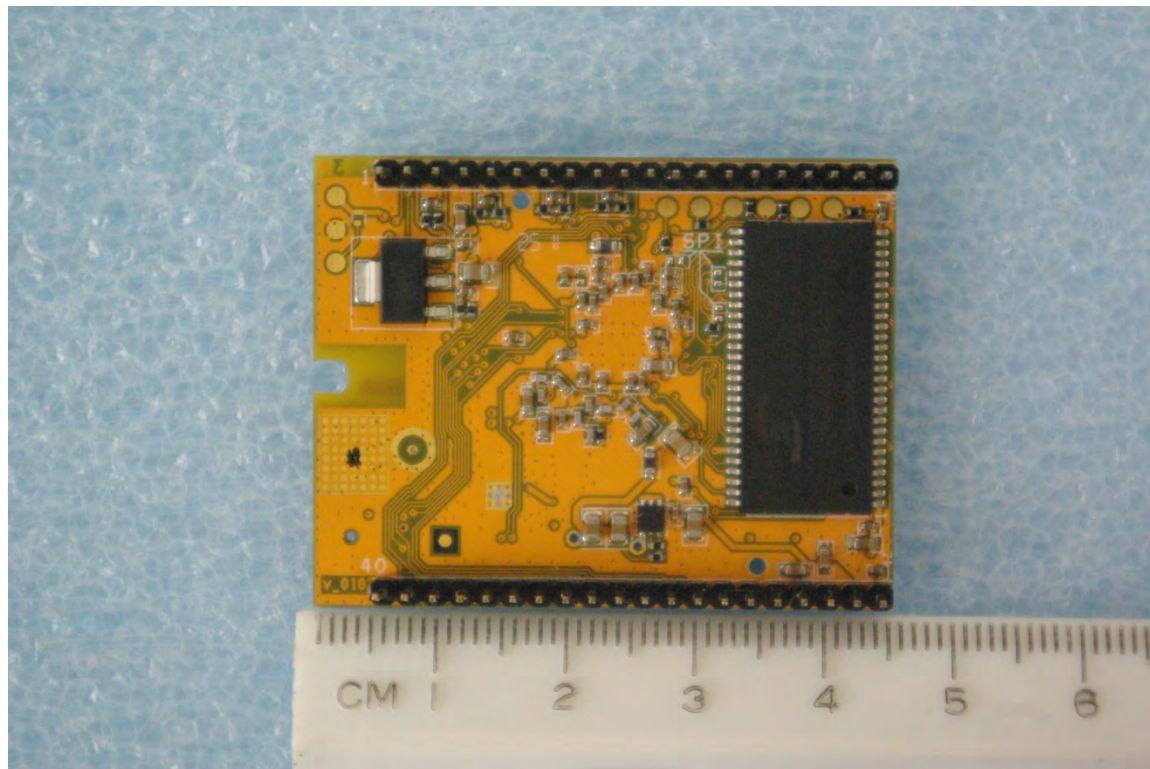


External photographs of equipment under test
EUT module front



EUT module back

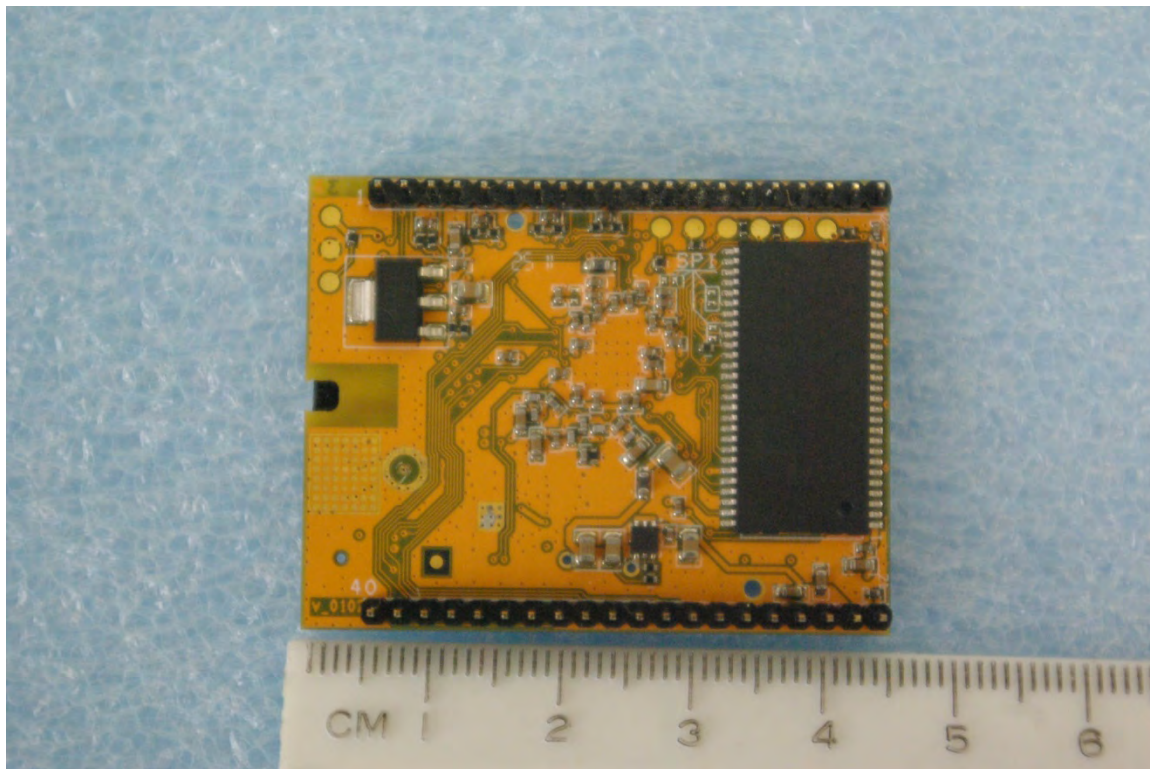
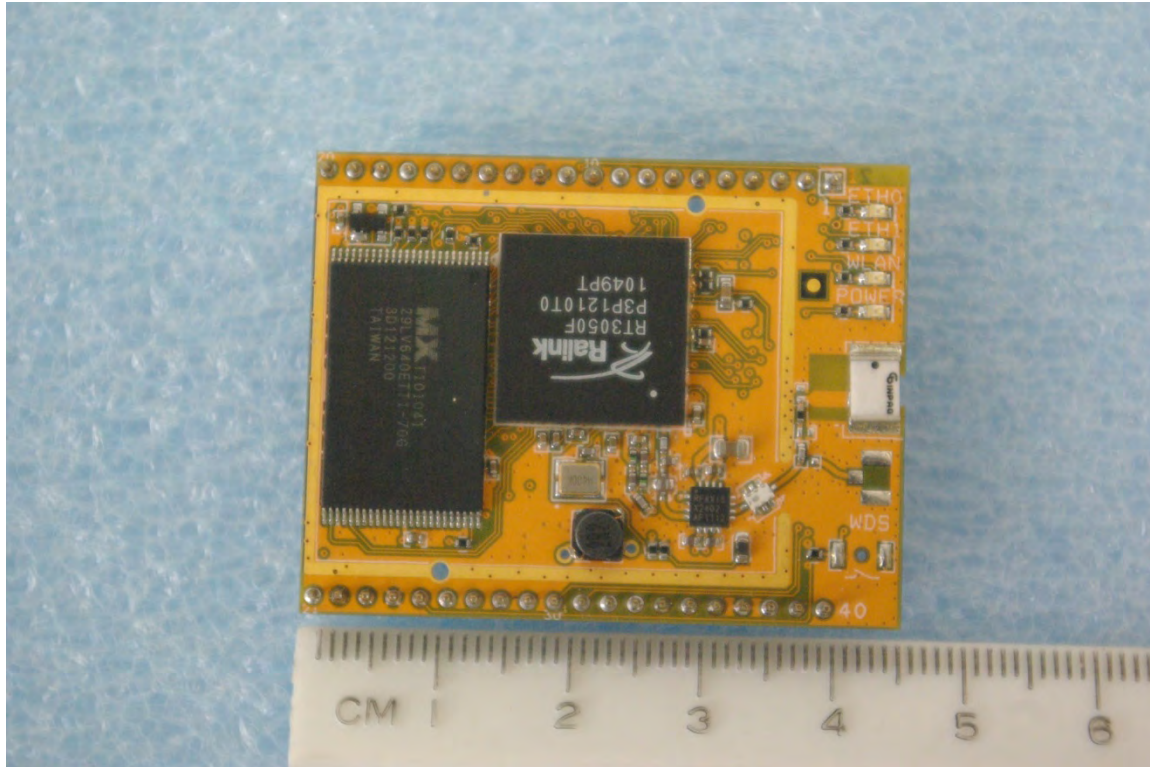


Rogers Labs, Inc.
4405 W. 259th Terrace
Louisburg, KS 66053
Phone/Fax: (913) 837-3214
Revision 1

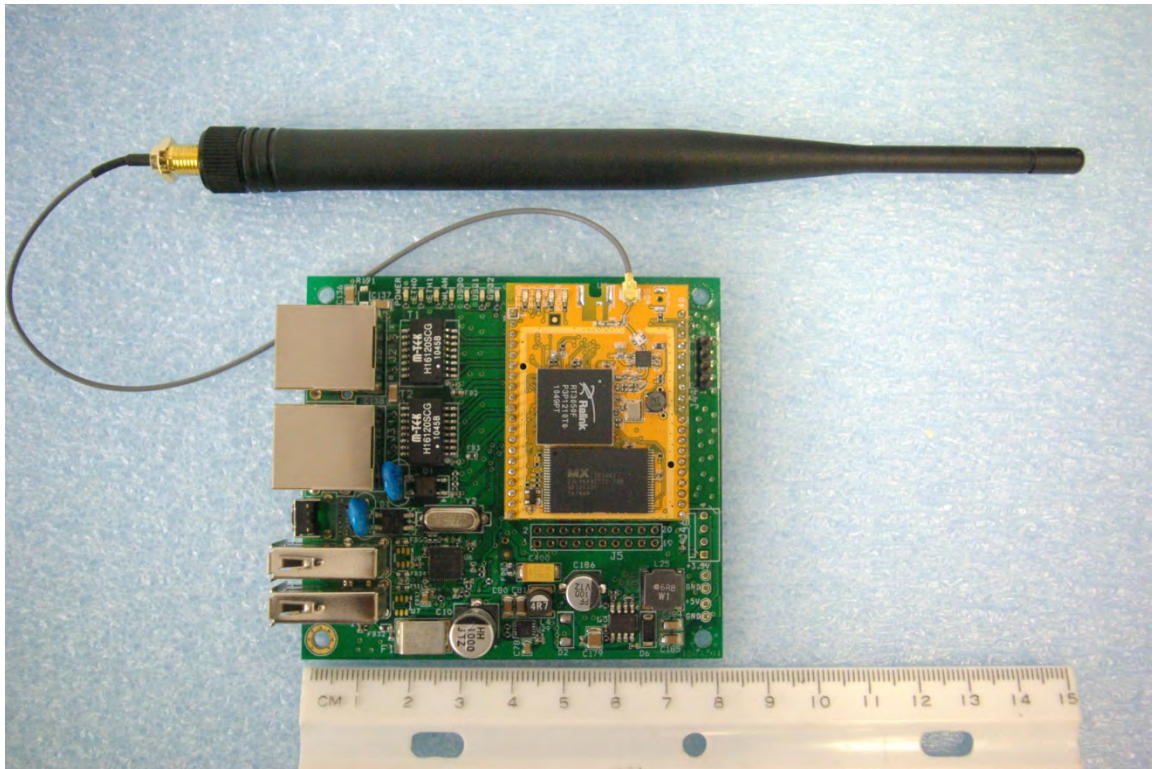
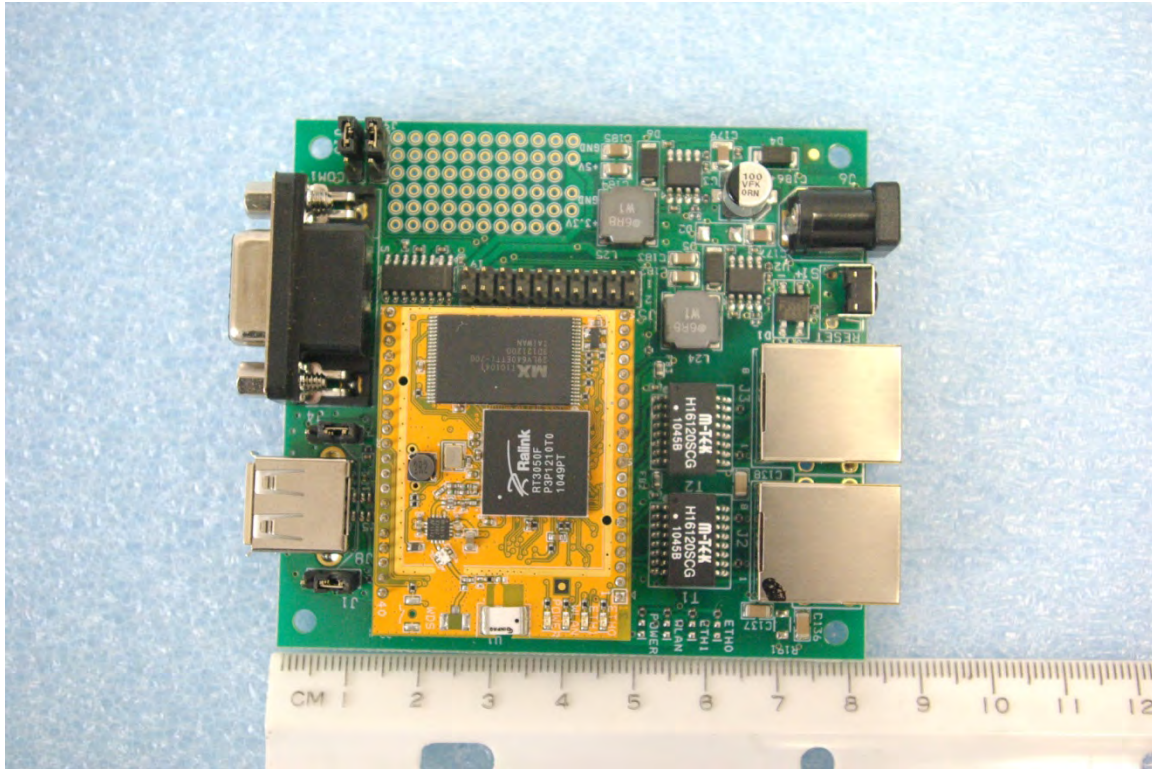
8devices
Model: Carambola WiFi module
Test #: 111127
Test to: CFR47 (15.247)
File: ExtPho CM1

SN: ENG1
FCC ID#: Z9W-CM1
Date: November 27, 2011
Page 1 of 4

Chip Mounted antenna (without shield in place)



Transmitter board placed on the support interface board



Rogers Labs, Inc.
4405 W. 259th Terrace
Louisburg, KS 66053
Phone/Fax: (913) 837-3214
Revision 1

8devices
Model: Carambola WiFi module
Test #: 111127
Test to: CFR47 (15.247)
File: ExtPho CM1

SN: ENG1
FCC ID#: Z9W-CM1
Date: November 27, 2011
Page 3 of 4

Accessories



Rogers Labs, Inc.
4405 W. 259th Terrace
Louisburg, KS 66053
Phone/Fax: (913) 837-3214
Revision 1

8devices
Model: Carambola WiFi module
Test #: 111127
Test to: CFR47 (15.247)
File: ExtPho CM1

SN: ENG1
FCC ID#: Z9W-CM1
Date: November 27, 2011
Page 4 of 4