

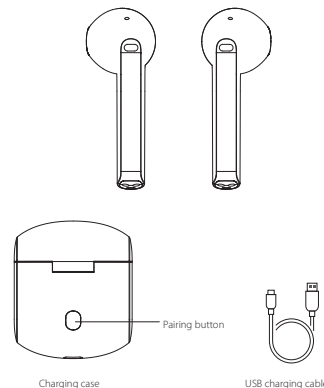


TWS200

True Wireless Stereo Earbuds

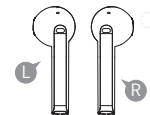
www.edifier.com

## EN · Product Description and Accessories



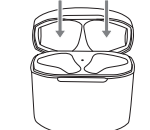
Note: Images are for illustrative purposes only and may differ from the actual product.

## User Guide



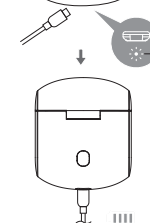
### • Charge the Earbuds

- You may hear a warning tone when at low battery level, please place the earbuds in the case for charging.



### • Charge the Charging Case

- If red light flashes six times rapidly (three times per one second) when the case is opened, it indicates the case has a low battery capacity, please charge in time. Charging time: approx. 2 hours for a full charging.

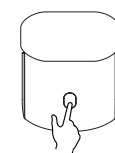


### • Red light

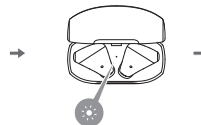
Rated input: 5V=35mA(earbuds)  
5V=350mA(charging case)

Warning: The rechargeable batteries that provide power for this product must be disposed properly for recycling. Do not dispose of batteries in fire to prevent an explosion.

## • Pairing



- Bluetooth pairing: press and hold for 3 seconds
- TWS pairing: double press
- Clear pairing records: press and hold for approx. 8 seconds

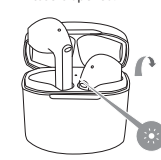


- Bluetooth pairing: red and white lights flashing rapidly
- TWS pairing: white light flashing rapidly
- Clear pairing records: white light turning off after flashing rapidly six times



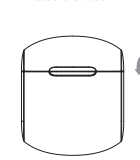
Search and connect to "EDIFIER TWS200 L" or "EDIFIER TWS200 R", after pairing is done, the white light will flash twice per every 5 seconds.

## • Power on once the case is opened.

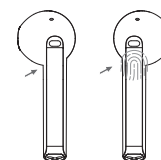


White light steady lit for 1 second

## • Power off once the case is closed.



## • Functional Operation



Accept/end a call: double press either earbud

Pause/play: double press the right earbud

Voice assistant: double press the left earbud

Note: double-pressing is to pause/play/accept/end a call when only one earbud is used.

## ■ FAQs

Indicator light is off during charging.

- Please ensure the earbuds are correctly placed in the charging case.

No sound

- Check if the earbuds are operating.
- Check if the earbuds volume are at an appropriate level.
- Check if the earbuds are correctly connected with mobile phone.
- Check if the earbuds are operating within a normal working range.

The call quality of the earbuds are not good.

- Check if mobile phone is in an area with strong signal.
- Please ensure the earbuds are within effective distance (10m) and no obstacle between the earbuds and mobile phone.

When playing music, cannot control pause/play via the earbuds.

- Please ensure the paired device support AVRCP (Audio/Video Remote Control Profile) profile.

## ■ Maintenance

- Do not use fast charging devices to charge the product to avoid affecting batteries' service life.
- Please charge the product with lithium battery at least once per three months if not used for long periods of time.
- Keep the product away from humid places to avoid affecting internal circuit. Do not use the product during intense exercise or with much sweat to prevent sweat from dropping into the product to make damage.
- Do not put the product in places exposed to sun or with high temperature. High temperature will shorten service life of electronic components, damage battery and deform plastic components.
- Do not put the product in cold places to avoid damaging internal circuit board.
- Do not dismantle the product. Non-professional personnel may damage the product.
- Do not drop, strongly vibrate, strike the product with hard object to avoid damaging internal circuit.
- Do not use drastic chemicals or cleaner to clean the product.
- Do not use sharp objects to scratch product surface to avoid damaging shell and affecting facade.

Edifier International Limited  
P.O. Box 6264  
General Post Office  
Hong Kong

www.edifier.com  
©2019 Edifier International Limited. All rights reserved.  
Printed in China

NOTICE:  
For the need of technical improvement and system upgrade, information contained herein may be subject to change from time to time without prior notice.

Products of EDIFIER will be customized for different applications. Pictures and illustrations shown on this manual may be slightly different from actual product. Images are for illustrative purposes only and may differ from the actual product.