

# S1000A

## Smart Home Speaker

Edifier International Limited  
P.O. Box 6264  
General Post Office  
Hong Kong

Tel: +852 2522 6989  
Fax: +852 2522 1989  
www.edifier.com  
© 2018 Edifier International Limited. All rights reserved.  
Printed in China

**NOTICE:**  
For the need of technical improvement and system upgrade, information contained herein may be subject to change from time to time without prior notice.  
Products of EDIFIER will be customized for different applications. Pictures and illustrations shown on this manual may be slightly different from actual product. Picture for reference only, actual product prevails.

User manual | Manuel d'utilisateur | Manual de usuario | Bedienungsanleitung | Manuale dell'utente | Manual do utilizador

### Important safety instruction

1. Please read the instructions carefully. Keep it in safe place for future reference.
2. Use only accessories approved by the manufacturer.
3. Install the instrument properly by following the instructions in the device connection section.
4. Using the product in a 0-35°C environment is recommended.
5. To reduce the risk of fire and electric shock, do not expose the product to rain or moisture.
6. Do not use this product near water. Do not immerse the product into any liquid or have it exposed to dripping or splashing.
7. Do not install or use this product near any heat source (e.g. radiator, heater, stove, or other devices that generate heat).
8. Do not place any object filled with liquids, such as vases on the product, neither should any open fire, such as lit candles be placed on the product.
9. Do not block any ventilation openings. Do not insert any object into ventilation openings or slots. It may cause fire or electric shock.
10. Keep sufficient clearance around the product to maintain good ventilation (minimum 5cm is recommended).
11. Do not force a plug into the jack. Before connection, check for blockage in the jack and whether the plug matches the jack and is oriented to the right direction.
12. Keep the provided accessories and parts (such as screws) away from children to prevent from being swallowed by mistake.
13. Do not open or remove the housing yourself. It may expose you to dangerous voltage or other hazardous risks. Regardless the cause of damage (such as damaged wire or plug, exposure to liquid splash or foreign object falling in, exposure to rain or moisture, product not working or being dropped, etc.), the repair has to be performed by an authorized service professional immediately.
14. Before cleaning the product with dry cloth, always turn off the product and disconnect the power plug first.
15. Never use strong acid, alkali, gasoline, alcohol, or other chemical solvents to clean the product surface. Use only neutral solvent or clear water for cleaning.

Excessively loud music may lead to hearing loss. Please keep the volume in a safe range.

Correct disposal of this product. This marking indicates that this product should not be disposed with other household wastes throughout the EU. To prevent possible harm to the environment or human health from uncontrolled waste disposal, recycle it responsibly to promote the sustainable reuse of material resources. To return your used device, please use the return and collection systems or contact the retailer where the product was purchased. They can take this product for environmental safe recycling.

Use only with the cart, stand, tripod, bracket, or table specified by the manufacturer, or sold with the apparatus. When a cart is used, use caution when moving the cart/apparatus combination to avoid injury from tip-over.

### Important safety instruction

**Power warning:**  
1. Place the product near the power outlet for easy use.  
2. Before use, make sure that the operating voltage is the same as your local power supply. Correct operating voltage can be found on the product plate.  
3. For safety purpose, unplug the product during lightning storms or when unused for extended periods of time.  
4. Under normal conditions, the power supply may get hot. Please keep good ventilation in the area and exercise caution.  
5. Safety warning labels on the housing or bottom of the product or power adaptor.

This symbol is to alert the user to the presence of un-insulated dangerous voltage within the product's enclosure that may be of sufficient magnitude to constitute a risk of electric shock to persons.  
 This symbol is to warn the user not to disassemble the enclosure of the product and there is no user-replaceable part inside. Take the product to an authorized service center for repair.

This symbol indicates that the product is for indoor use only.

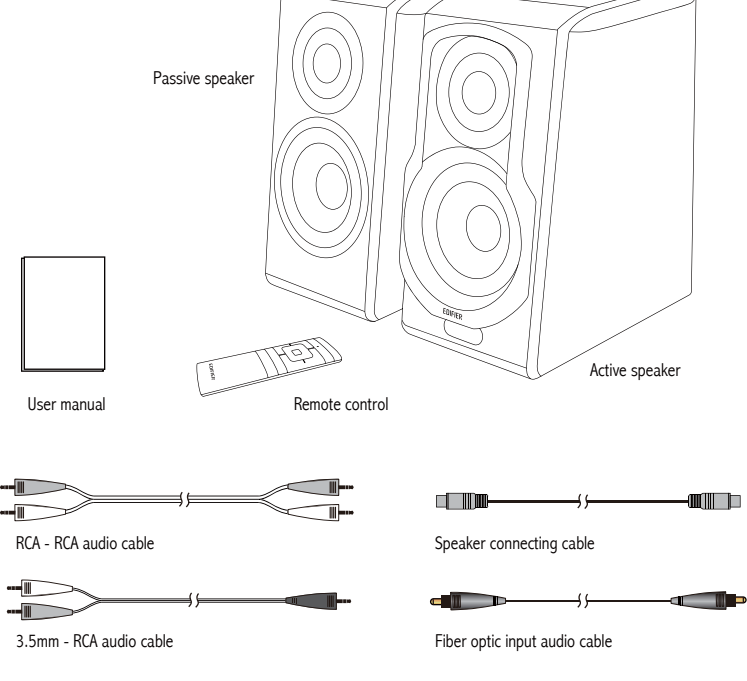
This symbol indicates that the product is a CLASS II or double insulated electrical device with no earth requirement.

The MAINS plug is used as the disconnect device, the disconnect device shall remain readily operable.

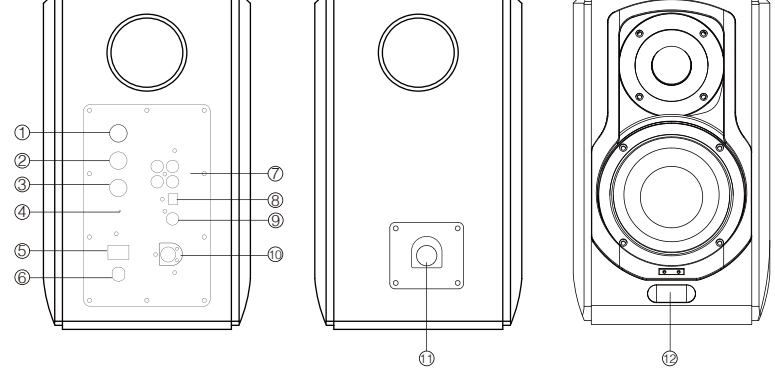
**For wireless product:**  
1. Wireless product may generate shortwave radio frequencies and interfere with the normal use of other electronic devices or medical equipment.  
2. Turn off the product when it's disallowed. Do not use the product in medical facilities, on airplane, at gas stations, near automatic gates, automatic fire alarm system or other automated devices.  
3. Do not use the product in the vicinity of a pacemaker within a 20cm range. The radio waves may affect the normal operation of the pacemaker or other medical devices.

### Unpack the box

#### Box Contents



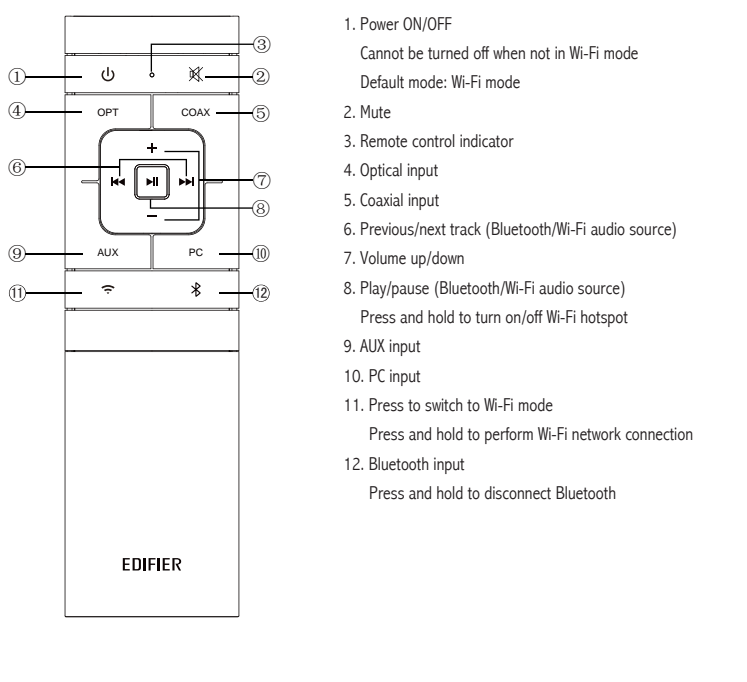
### Illustrations



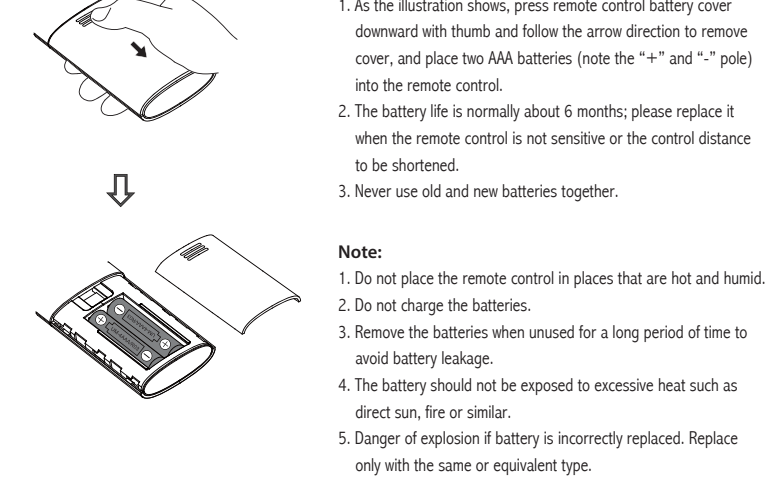
1. Volume control/input selection, with built-in multifunctional button  
Rotate: volume control  
Press: input selection  
Press and hold: Disconnect Bluetooth (Bluetooth mode)  
Wi-Fi network connection (Wi-Fi mode)
2. Treble adjustment
3. Bass adjustment
4. Wi-Fi system reset
5. Power switch
6. Power cable
7. PC/AUX input
8. Optical input
9. Coaxial input
10. Connect to passive speaker
11. Connect to active speaker
12. LED display window

### Remote control illustration

Point the remote control to the remote receiving window on the speaker, the optimum operational distance is within 7 meters. When the remote receives remote control commands, displayed value of display window will alert or flash.



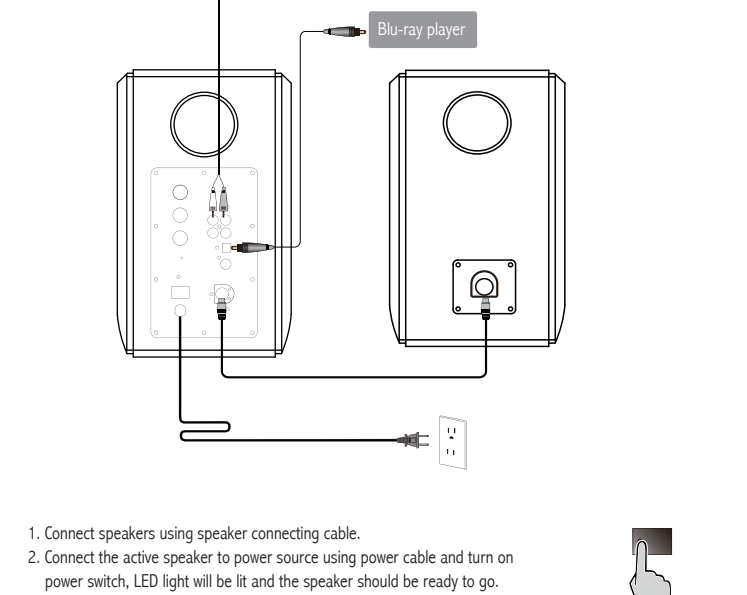
### Remote control illustration



1. As the illustration shows, press remote control battery cover downward with thumb and follow the arrow direction to remove cover, and place two AAA batteries (note the "+" and "-" pole) into the remote control.
2. The battery life is normally about 6 months; please replace it when the remote control is not sensitive or the control distance will be shortened.
3. Never use old and new batteries together.

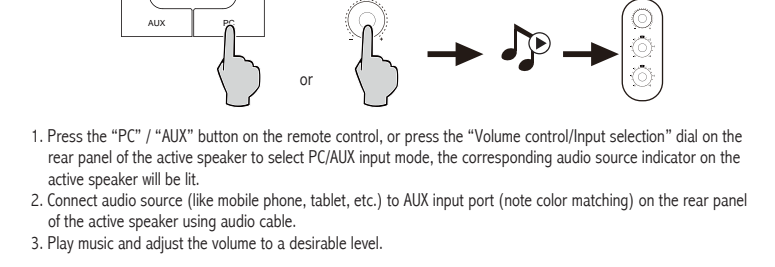
**Note:**  
1. Do not place the remote control in places that are hot and humid.  
2. Do not charge the batteries.  
3. Remove the batteries when unused for a long period of time to avoid battery leakage.  
4. The battery should not be exposed to excessive heat such as direct sun, fire or similar.  
5. Danger of explosion if battery is incorrectly replaced. Replace only with the same or equivalent type.

### Connection

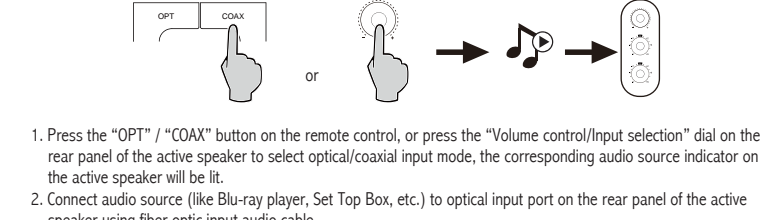


1. Connect speakers using speaker connecting cable.
2. Connect the active speaker to power source using power cable and turn on power switch, LED light will be lit and the speaker should be ready to go.
3. Connect to audio sources using the corresponding audio cable.

### Audio source Input



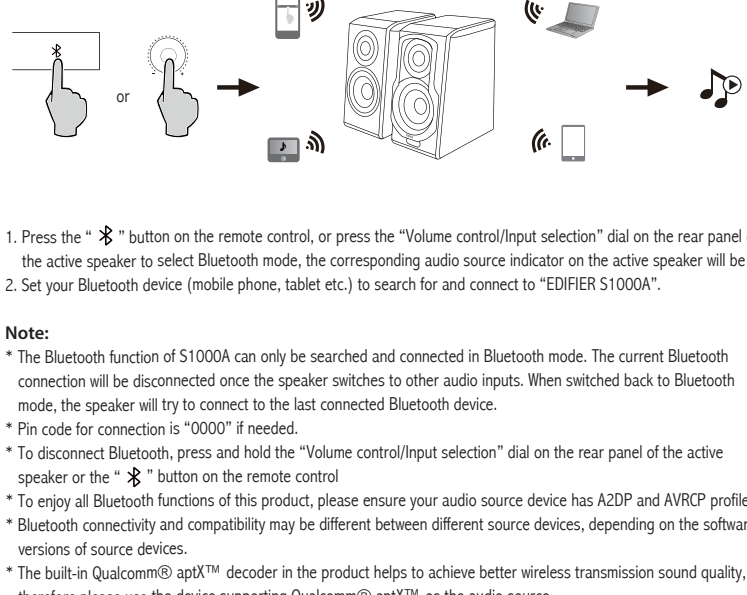
1. Press the "PC" / "AUX" button on the remote control, or press the "Volume control/input selection" dial on the rear panel of the active speaker to select PC/AUX input mode, the corresponding audio source indicator on the active speaker will be lit.
2. Connect audio source (like mobile phone, tablet, etc.) to AUX input port (note color matching) on the rear panel of the active speaker using audio cable.
3. Play music and adjust the volume to a desirable level.



1. Press the "OPT" / "COAX" button on the remote control, or press the "Volume control/input selection" dial on the rear panel of the active speaker to select optical/coaxial input mode, the corresponding audio source indicator on the active speaker will be lit.
2. Connect audio source (like Blu-ray player, Set Top Box, etc.) to optical input port on the rear panel of the active speaker using fiber optic input audio cable.
3. Play music and adjust the volume to a desirable level.

**Note:** Only the standard PCM audio signals (44.1KHz/48KHz/96KHz/192KHz) function in optical/coaxial mode.

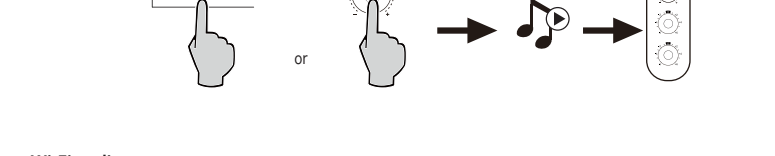
### Bluetooth input



1. Press the "BT" button on the remote control, or press the "Volume control/input selection" dial on the rear panel of the active speaker to select Bluetooth mode, the corresponding audio source indicator on the active speaker will be lit.
2. Set your Bluetooth device (mobile phone, tablet etc.) to search for and connect to "EDIFIER S1000A".

**Note:**  
\* The Bluetooth function of S1000A can only be searched and connected in Bluetooth mode. The current Bluetooth connection will be disconnected once the speaker switches to other audio inputs. When switched back to Bluetooth mode, the speaker will try to connect to the last connected Bluetooth device.  
\* Pin code for connection is "0000" if needed.  
\* To disconnect Bluetooth, press and hold the "Volume control/input selection" dial on the rear panel of the active speaker or the "BT" button on the remote control.  
\* To enjoy all Bluetooth functions of this product, please ensure your audio source device has A2DP and AVRCP profiles.  
\* Bluetooth connectivity and compatibility may be different between different source devices, depending on the software versions of source devices.  
\* The built-in Qualcomm® aptX™ decoder in the product helps to achieve better wireless transmission sound quality, therefore please use the device supporting Qualcomm® aptX™ as the audio source.

### Wi-Fi Audio Source



**Wi-Fi audio source**  
Press the "Wi-Fi" button on the remote control, or press the "Volume control/input selection" dial on the rear panel of the active speaker to select Wi-Fi mode, the corresponding audio source indicator on the active speaker will be lit.

**Hotspot management**  
1. As S1000A has self hotspot, it can help you to expand Wi-Fi signal range and make Wi-Fi signal and music cover your home.  
a. Make sure S1000A has been connected to network.  
b. Go to your phone's WLAN or Wi-Fi settings to search for hotspot "EDIFIER\_S1000A\_XXXX", and XXXX is the last four digits of the device MAC address.  
2. Click "EDIFIER\_S1000A\_XXXX" and input the default password "12345678".  
3. This hotspot supports connecting 6 mobile devices at the same time, please connect as much as you like!

**Note:**  
If needs to modify the password, change the hotspot name, upgrade the firmware of the wireless part of the product, upgrade the HW program, please visit "10.10.10.254" via phone browser for modification and upgrade after connected to hotspot.

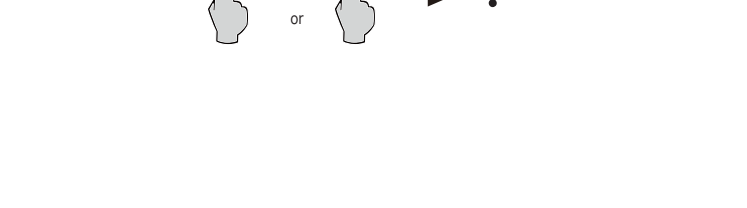
### Download and Install App

To enjoy all functions of the smart speaker, please download our App and guide the speaker to connect to Wi-Fi network via this App.

Please download the "EDIFIER HOME" App in the App store.

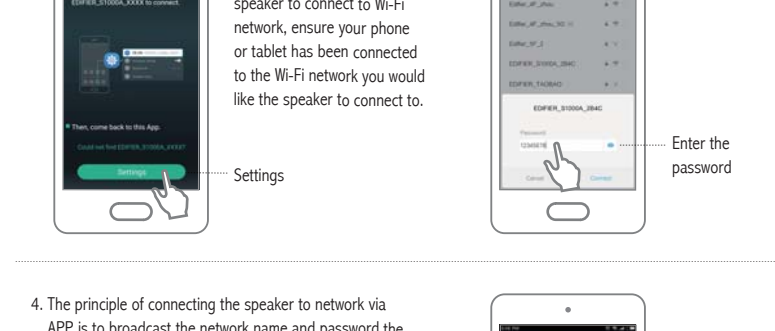
#### Guide the Speaker to Connect to Wi-Fi Network

1. Press the "Wi-Fi" button on the remote control, or press the "Volume control/input selection" dial on the speaker to select Wi-Fi audio source.



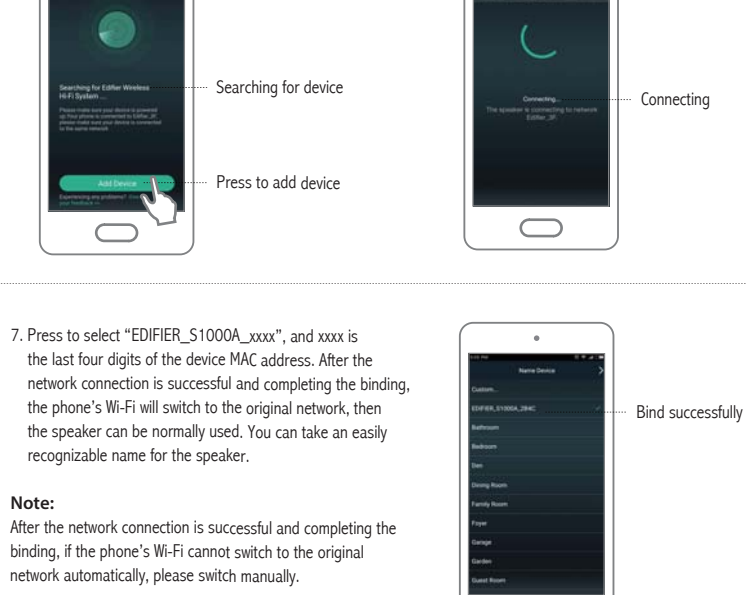
#### Guide the Speaker to Connect to Wi-Fi Network

2. Go to your phone's Wi-Fi settings and select the Wi-Fi starting with EDIFIER\_S1000A to connect.
3. Enter the default password "12345678", then the phone is connected to S1000A Wi-Fi network.



4. The principle of connecting the speaker to network via APP is to broadcast the network name and password the phone already connected to the speaker. Therefore, after entering the configuration interface: please enter Wi-Fi password the phone already connected into the text box, and note that the speaker will not connect to the wanted Wi-Fi network if the password is wrong. In the network name text box, it will display the Wi-Fi network name the phone connected by default. If needs to modify, it is recommended to switch to the phone's configuration interface, then reconnect to Wi-Fi network and make configurations again.

#### Guide the Speaker to Connect to Wi-Fi Network



7. Press to select "EDIFIER\_S1000A\_XXXX", and XXXX is the last four digits of the device MAC address. After the network connection is successful and completing the binding, the phone's Wi-Fi will switch to the original network, then the speaker can be normally used. You can take an easily recognizable name for the speaker.

**Note:**  
After the network connection is successful and completing the binding, if the phone's Wi-Fi cannot switch to the original network automatically, please switch manually.

#### Audio Source Mode 1: EDIFIER HOME Cloud Music Playing

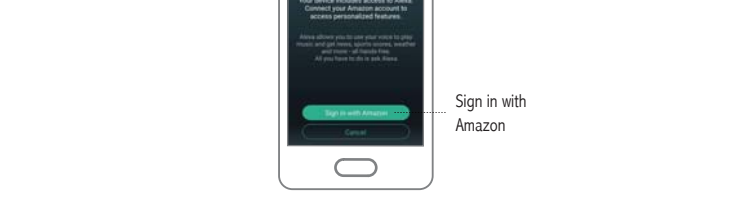
**Operating Guide**  
The relationship between EDIFIER HOME APP and the speaker: the App is actually an advanced interface of the speaker; the user can customize the speaker to fit a specific application environment via App, and can choose the favorite radio station or music source by controlling playing via App.  
**Search**  
Find your favorite music by searching song titles, singers and albums.  
**Favorites**  
When browsing, press "♡" to add to my favorites; and in playing interface press "♡" to add to my favorites.  
**My Music**  
Choose to play local music, my song list, and recent play.  
**TuneIn**  
Listen to my radio station, local radio station, music, talk shows and sports, and listen by location.  
**Amazon Alexa**  
Press "Amazon Alexa" to sign in with Amazon account and enjoy Amazon Alexa interface; Press the "In App Alexa" button to speaker to Alexa; Press and hold the "⏏" to speak a channel (also can be song or album) or checking whether and then release, it will start searching or playing according to voice input.  
**Add More Services**  
Select to add: online radio station, HeartRadio, Spotify, TIDAL, and Napster.

#### Audio Source Mode 1: EDIFIER HOME Cloud Music Playing

**Instructions for how to use Spotify Connect**  
Listen out loud with Spotify Connect  
1. Connect your S1000A to your Wi-Fi network  
2. Open up the Spotify app on your phone, tablet or laptop using the same Wi-Fi network  
3. Play a song and select Devices Available  
4. Select your S1000A and start listening

The Spotify Software is subject to third party licenses found here: [www.spotify.com/connect/third-party-licenses](http://www.spotify.com/connect/third-party-licenses)

Sign in with Amazon account and visit the cloud audio library to select what you like.



#### Audio Source Mode 2: Line in Input

The user can control the speaker to switch to PC/AUX input "optical/coaxial input" via EDIFIER HOME APP, please refer to "PC/AUX input" "optical/coaxial input" in page 8 to play wired music.



### Specification

Power output:	R/L (Treble): 25W + 25W R/L (Mid-range and bass): 35W + 35W
Frequency response:	48Hz~20KHz
Input:	Wi-Fi / Bluetooth / Optical / Coaxial / PC / AUX
Wi-Fi:	2.412-2.462GHz (US) 2.412-2.472GHz (EU)
Bluetooth:	2.402-2.480GHz

There is no restriction of use.

### Troubleshooting

Problem	Solution
None sound	<ul style="list-style-type: none"> <li>• Check if the power indicator light is ON.</li> <li>• Try to turn up the volume using either the master volume control or remote control.</li> <li>• Ensure the audio cables are firmly connected and the input is set correctly on the speakers.</li> <li>• Check if there is a signal output from the audio source.</li> </ul>
Cannot connect via Bluetooth	<ul style="list-style-type: none"> <li>• Make sure the speaker is switched to Bluetooth input. If it is in other audio input modes, Bluetooth will not connect.</li> <li>• Disconnect from any Bluetooth device by pressing and holding the Bluetooth mode, then try again.</li> <li>• Effective Bluetooth transmission range is 10 meters; please ensure that operation is within the range.</li> <li>• Try another Bluetooth device for connection.</li> </ul>
Network pairing and connection is unsuccessful	<ul style="list-style-type: none"> <li>• Please ensure that the router has enabled DHCP (Dynamic host configuration protocol) function.</li> <li>• Please ensure that the IP address number of router is not limited; needs to allow for connecting multiple devices.</li> <li>• Please ensure that the router does not use enterprise level encryption (including WPA and WPA2).</li> <li>• Please ensure that the router does not use IP binding mechanism.</li> <li>• Please ensure that the specified target network is 2.4G network.</li> </ul>
Device registration fails (3084)	<ul style="list-style-type: none"> <li>• Go to the settings page and log in again to reconnect network.</li> </ul>
The S1000A does not turn on	<ul style="list-style-type: none"> <li>• Check if main power is connected, or if the wall outlet is switched on.</li> </ul>

To learn more about EDIFIER, please visit [www.edifier.com](http://www.edifier.com)  
For Edifier warranty queries, please visit the relevant country page on [www.edifier.com](http://www.edifier.com) and review the section titled Warranty Terms.  
USA and Canada: [service@edifier.ca](mailto:service@edifier.ca)  
South America: Please visit [www.edifier.com](http://www.edifier.com) (English) or [www.edifier.com](http://www.edifier.com) (Spanish/Portuguese) for local contact information.

# EDIFIER®

## FCC Regulatory Compliance

Warning: changes or modifications not expressly approved by the party responsible for compliance could void the user's authority to operate the equipment.

Note: This equipment has been tested and found to comply with the limits for a Class B digital device, pursuant to Part 15 of the FCC Rules. These limits are designed to provide reasonable protection against harmful interference in a residential installation. This equipment generates, uses and can radiate radio frequency energy and, if not installed and used in accordance with the instructions, may cause harmful interference to radio communications.

However, there is no guarantee that interference will not occur in a particular installation.

If this equipment does cause harmful interference to radio or television reception, which can be determined by turning the equipment off and on, the user is encouraged to try to correct the interference by one or more of the following measures:

- Reorient or relocate the receiving antenna.
- Increase the separation between the equipment and receiver.
- Connect the equipment into an outlet on a circuit different from that to which the receiver is connected.
- Consult the dealer or an experienced radio/TV technician for help.

## RF Exposure Compliance

This equipment complies with FCC radiation exposure limits set forth for an uncontrolled environment. This equipment should be installed and operated with minimum distance 20cm between the radiator and your body. This transmitter must not be co-located or operating in conjunction with any other antenna or transmitter.

## ISED Regulatory compliance

This device contains licence-exempt transmitters that comply with Innovation, Science and Economic Development Canada's licence-exempt RSS(s).

Operation is subject to the following two conditions:

This device may not cause interference.

This device must accept any interference, including interference that may cause undesired operation of the device.

L'émetteur exempt de licence contenu dans le présent appareil est conforme aux CNR d'Innovation, Sciences et Développement économique Canada applicables aux appareils radio exempts de licence. L'exploitation est autorisée aux deux conditions suivantes :

L'appareil ne doit pas produire de brouillage;

L'appareil doit accepter tout brouillage radioélectrique subi, même si le brouillage est susceptible d'en compromettre le fonctionnement.

This equipment complies with IC RSS-102 radiation exposure limits set forth for an uncontrolled environment. This equipment should be installed and operated with minimum distance 20cm between the radiator and your body.

Cet équipement est conforme aux limites d'exposition aux radiations IC CNR-102 établies pour un environnement non contrôlé. Cet équipement doit être installé et utilisé avec une distance minimale de 20 cm entre le radiateur et votre corps.