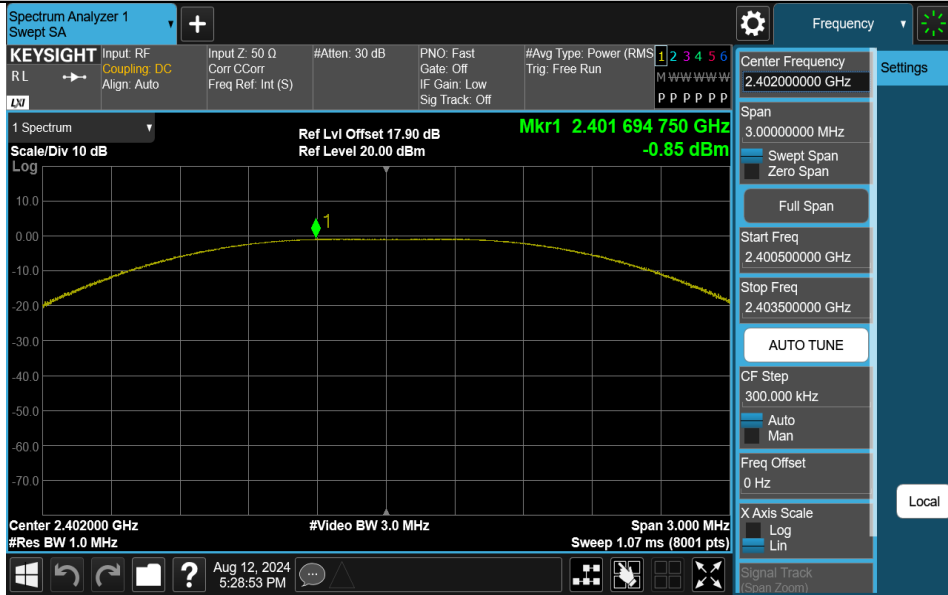


**Appendix B: Maximum conducted output power  
Test Result Peak**

Test Mode	Antenna	Frequency[MHz]	Conducted Peak Power[dBm]	Conducted Limit[dBm]	Verdict
BLE_1M	Ant1	2402	-0.85	≤30	PASS
BLE_1M	Ant1	2440	-1.92	≤30	PASS
BLE_1M	Ant1	2480	-2.48	≤30	PASS
BLE_2M	Ant1	2402	-0.72	≤30	PASS
BLE_2M	Ant1	2440	-1.69	≤30	PASS
BLE_2M	Ant1	2480	-2.29	≤30	PASS

### Test Graphs Peak

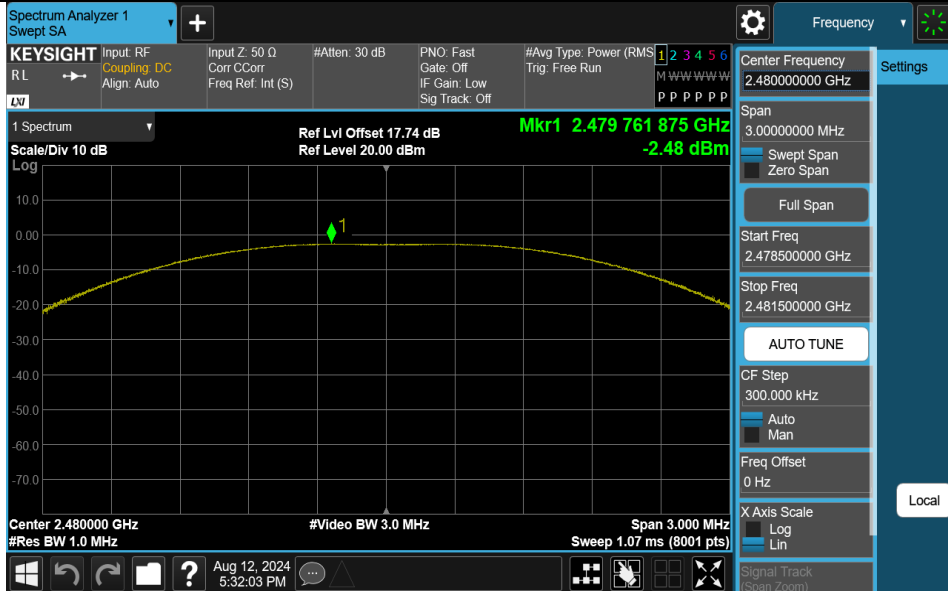
#### BLE\_1M-Ant1-2402-PASS



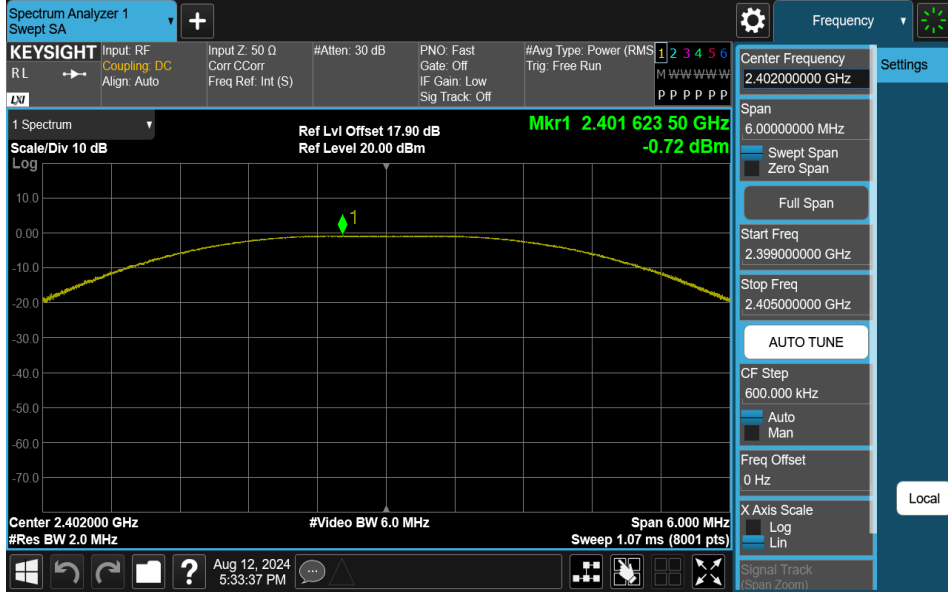
#### BLE\_1M-Ant1-2440-PASS



#### BLE\_1M-Ant1-2480-PASS



### BLE\_2M-Ant1-2402-PASS



### BLE\_2M-Ant1-2440-PASS



### BLE\_2M-Ant1-2480-PASS

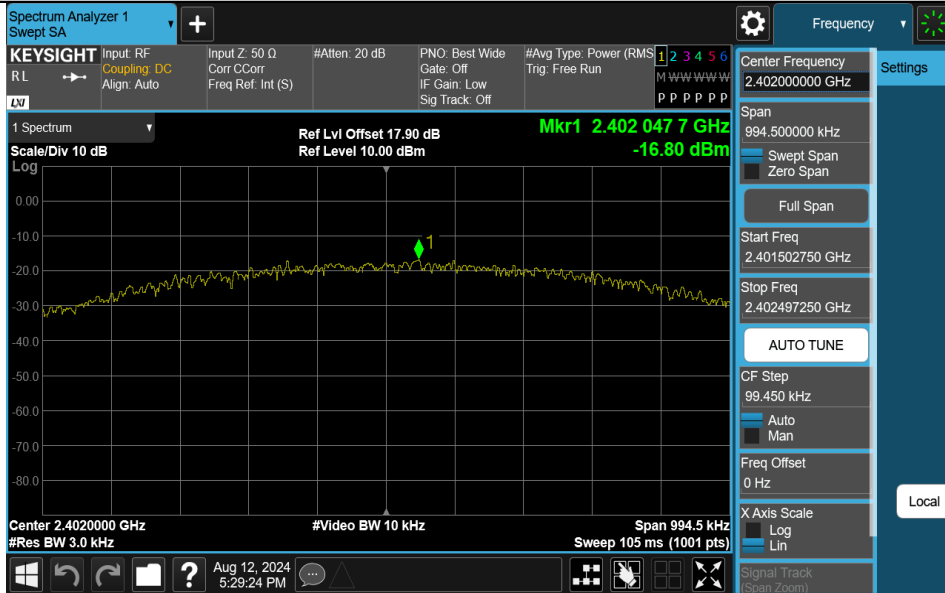


### Appendix C: Maximum power spectral density Test Result

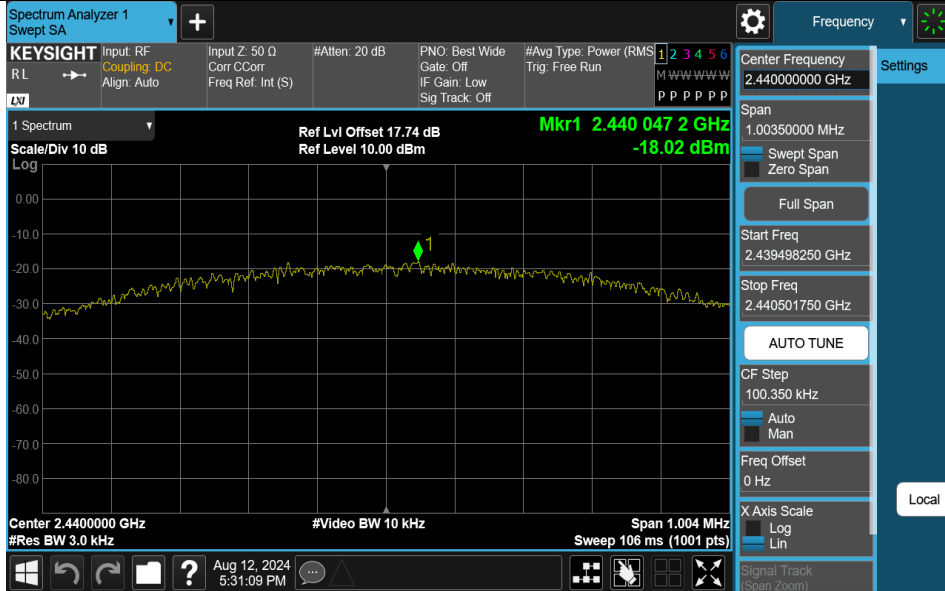
Test Mode	Antenna	Frequency[MHz]	Result[dBm/3kHz]	Limit[dBm/3kHz]	Verdict
BLE_1M	Ant1	2402	-16.80	≤8.00	PASS
BLE_1M	Ant1	2440	-18.02	≤8.00	PASS
BLE_1M	Ant1	2480	-18.53	≤8.00	PASS
BLE_2M	Ant1	2402	-18.93	≤8.00	PASS
BLE_2M	Ant1	2440	-20.10	≤8.00	PASS
BLE_2M	Ant1	2480	-20.67	≤8.00	PASS

### Test Graphs

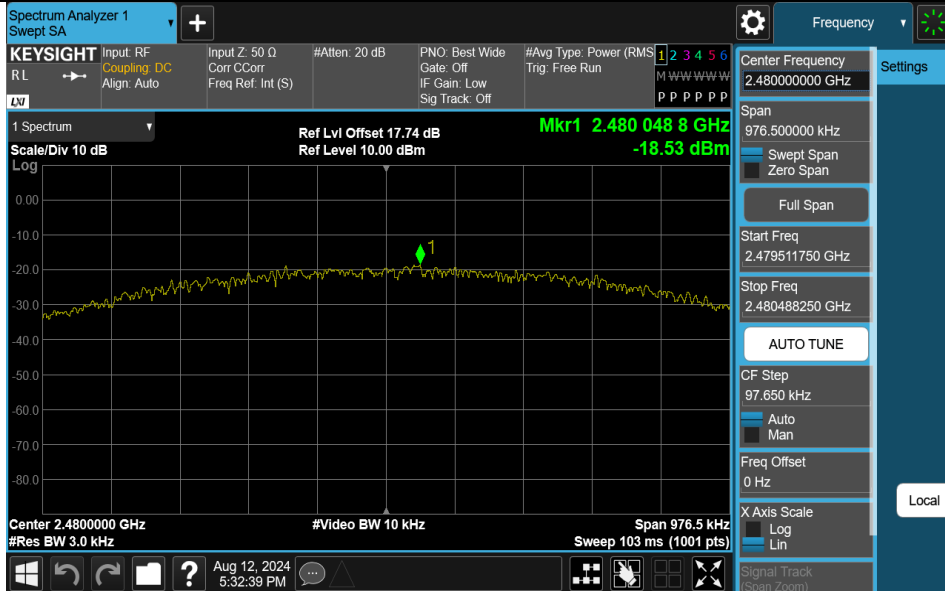
#### BLE\_1M-Ant1-2402-PASS



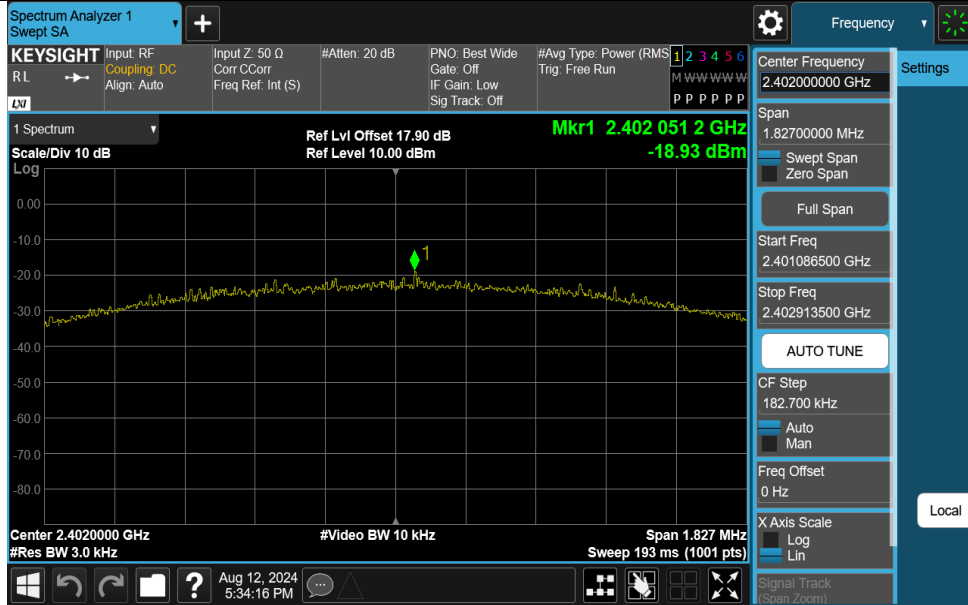
#### BLE\_1M-Ant1-2440-PASS



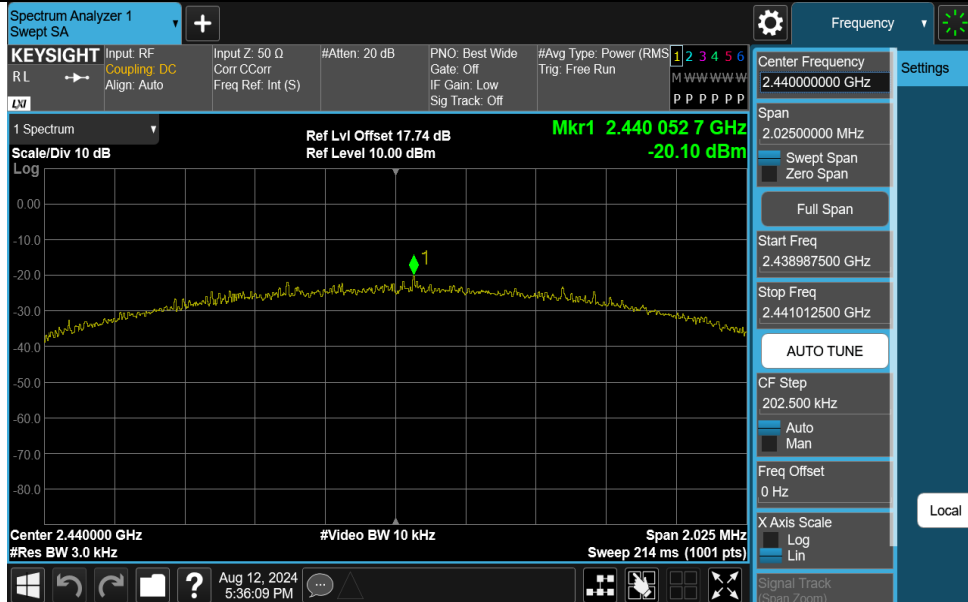
#### BLE\_1M-Ant1-2480-PASS



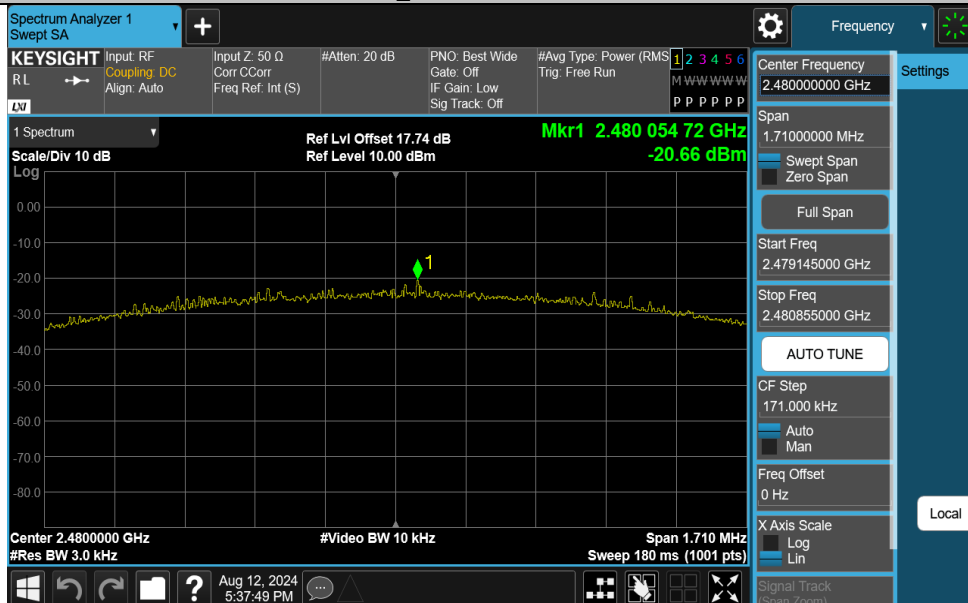
### BLE\_2M-Ant1-2402-PASS



### BLE\_2M-Ant1-2440-PASS



### BLE\_2M-Ant1-2480-PASS

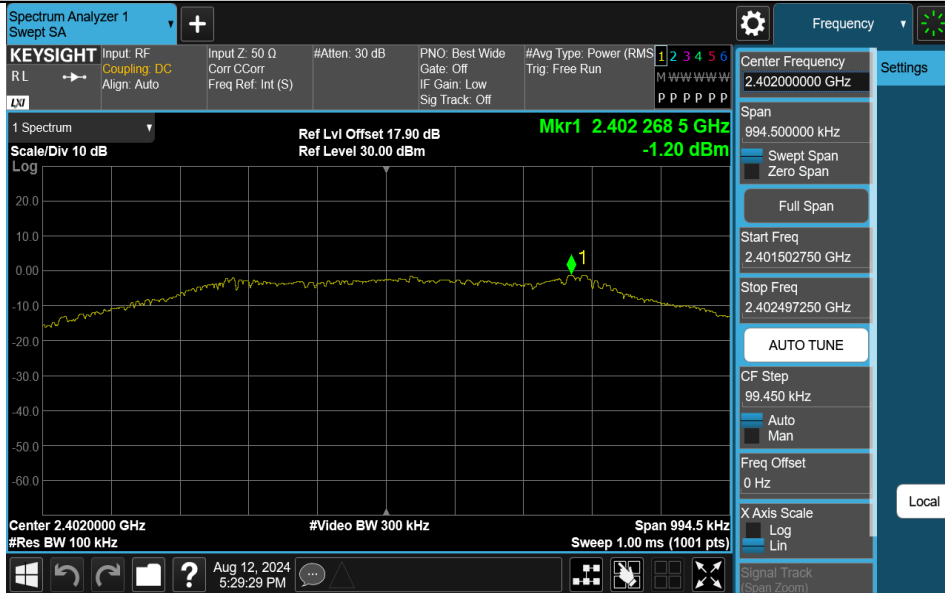


**Appendix D: Reference level measurement  
Test Result**

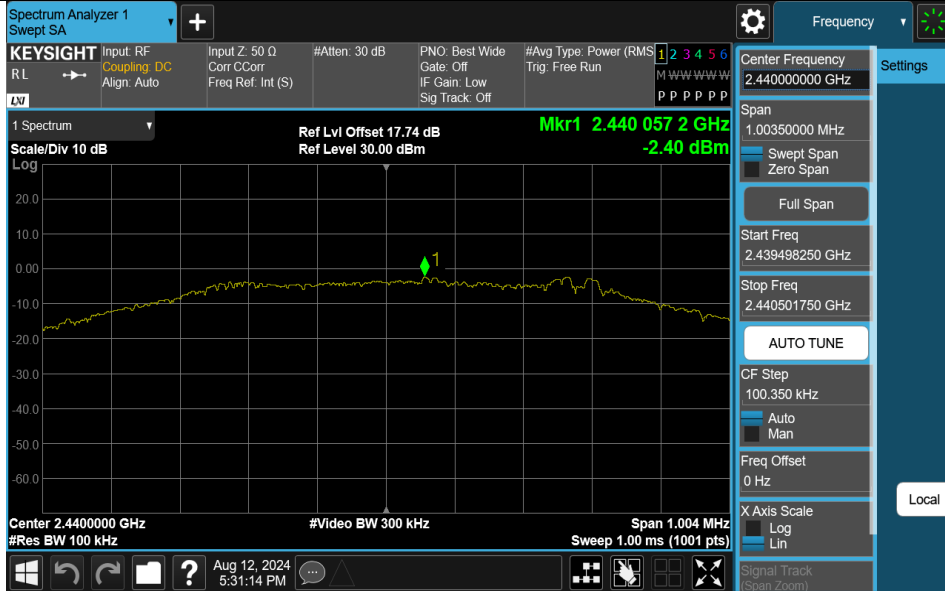
Test Mode	Antenna	Freq(MHz)	Max.Point[MHz]	Result[dBm]
BLE_1M	Ant1	2402	2402.27	-1.20
BLE_1M	Ant1	2440	2440.06	-2.40
BLE_1M	Ant1	2480	2480.26	-3.17
BLE_2M	Ant1	2402	2402.03	-1.85
BLE_2M	Ant1	2440	2440.10	-3.88
BLE_2M	Ant1	2480	2480.03	-3.69

### Test Graphs

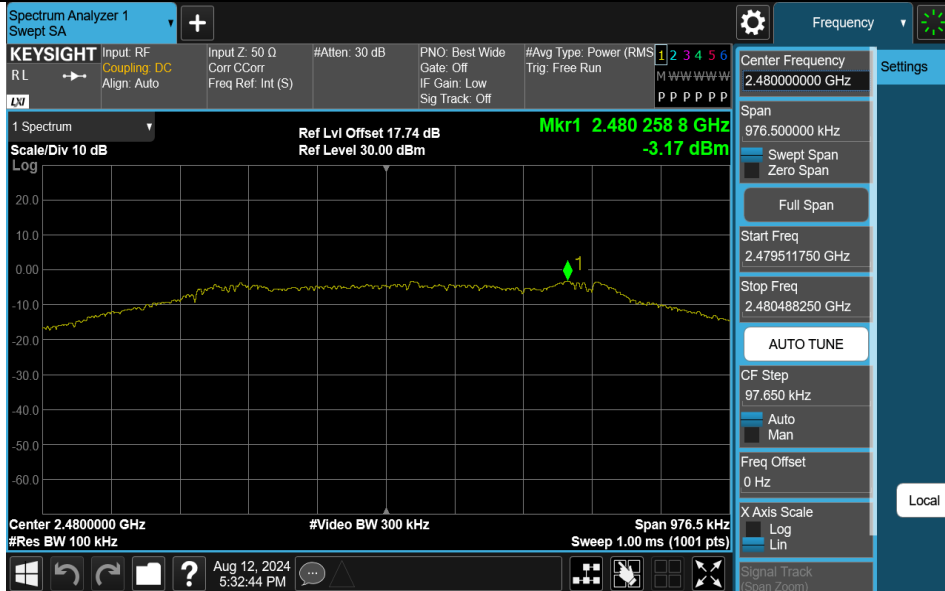
#### BLE\_1M-Ant1-2402-PASS



#### BLE\_1M-Ant1-2440-PASS

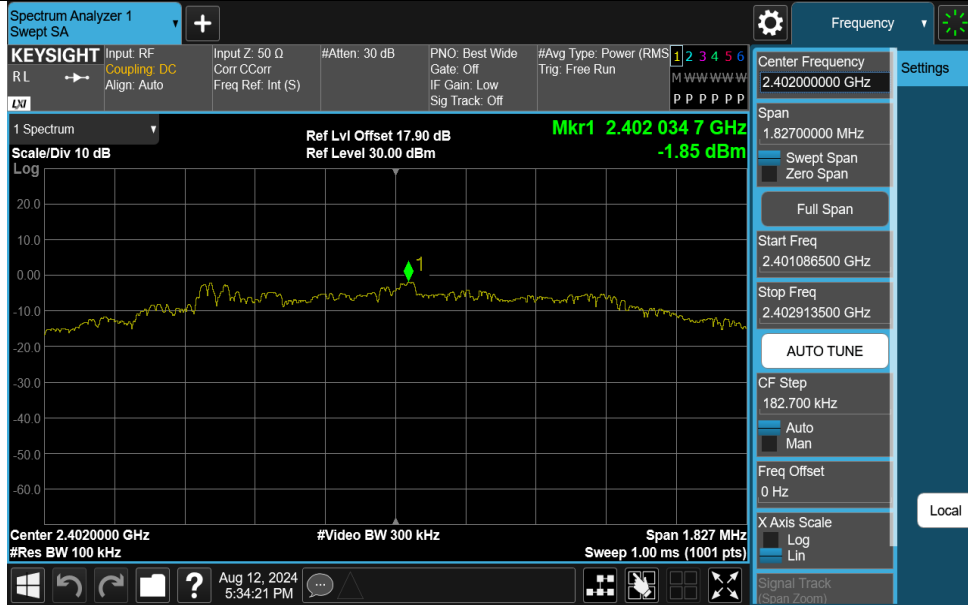


#### BLE\_1M-Ant1-2480-PASS

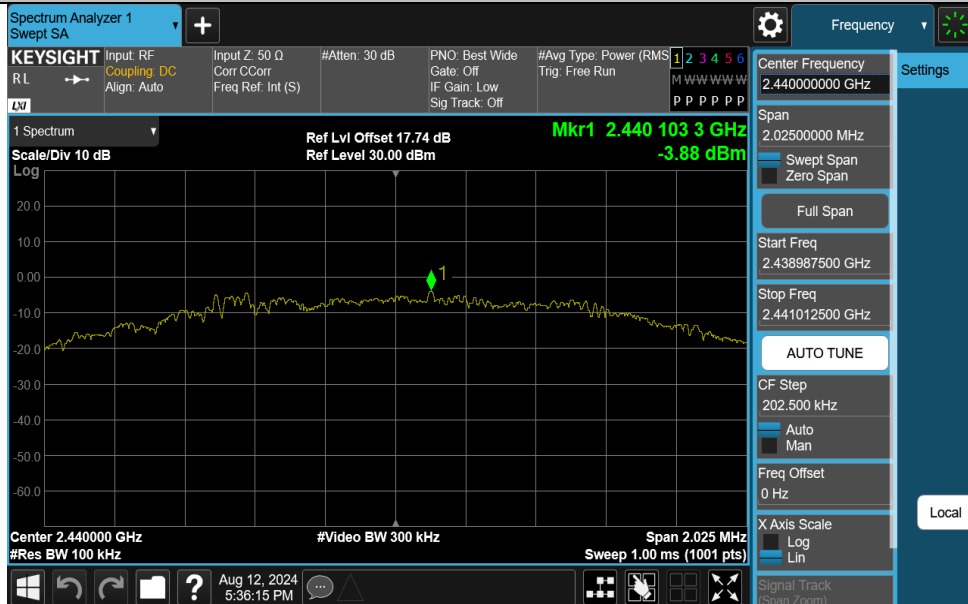




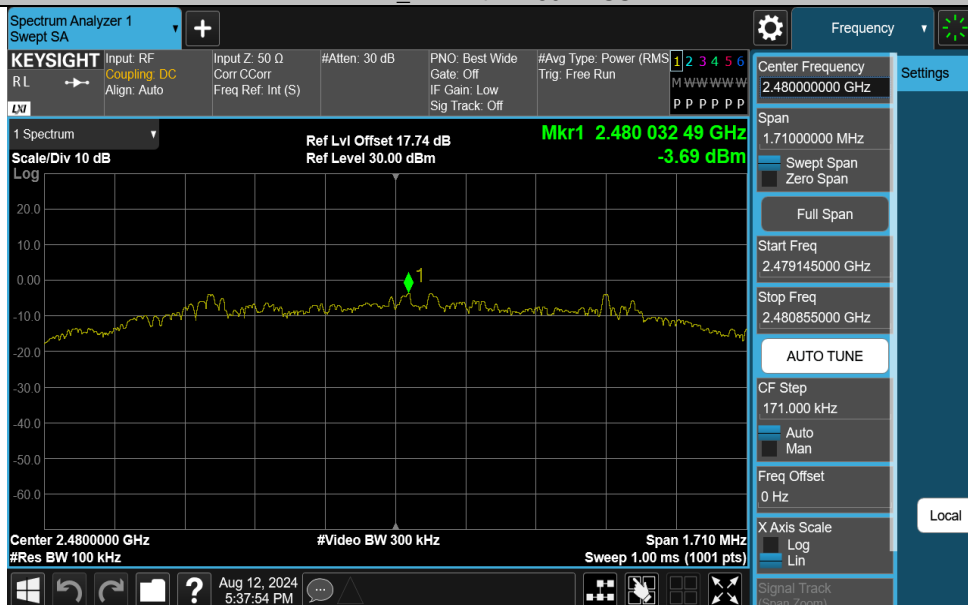
### BLE\_2M-Ant1-2402-PASS



### BLE\_2M-Ant1-2440-PASS



### BLE\_2M-Ant1-2480-PASS



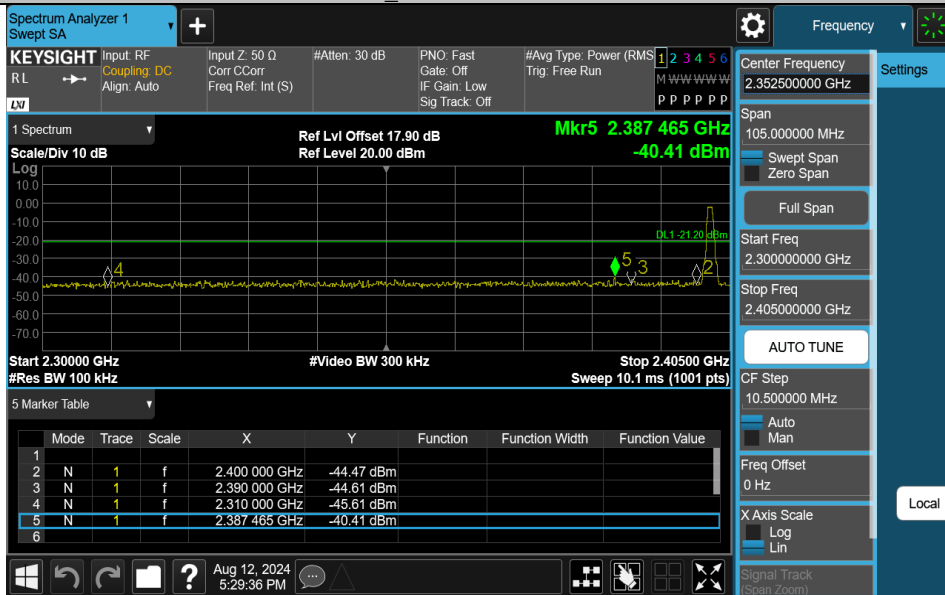


Appendix E: Band edge measurements  
Test Result

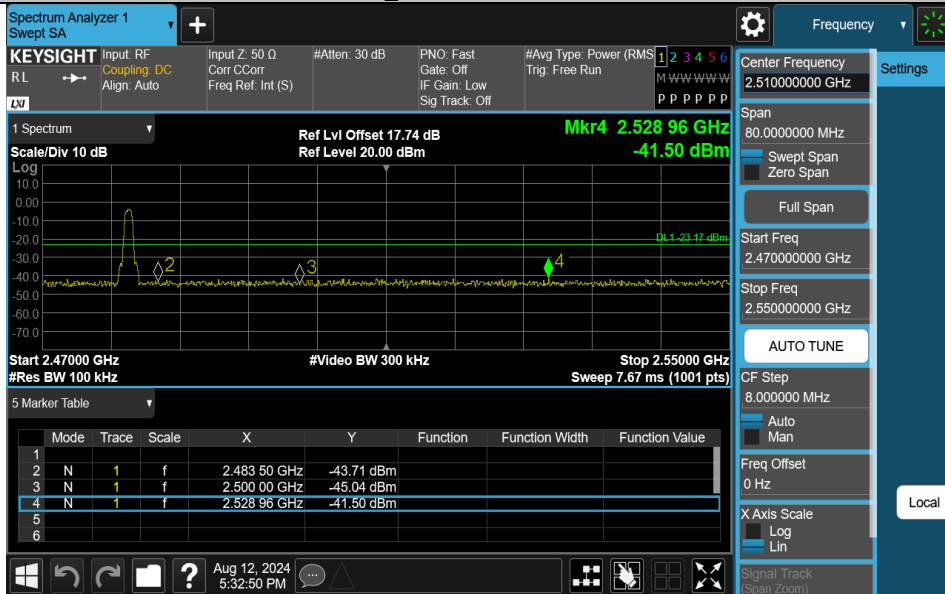
Test Mode	Antenna	ChName	Frequency[MHz]	RefLevel[dBm]	Result[dBm]	Limit[dBm]	Verdict
BLE_1M	Ant1	Low	2402	-1.20	-40.41	≤-21.2	PASS
BLE_1M	Ant1	High	2480	-3.17	-41.5	≤-23.17	PASS
BLE_2M	Ant1	Low	2402	-1.85	-37.67	≤-21.85	PASS
BLE_2M	Ant1	High	2480	-3.69	-41.26	≤-23.69	PASS

### Test Graphs

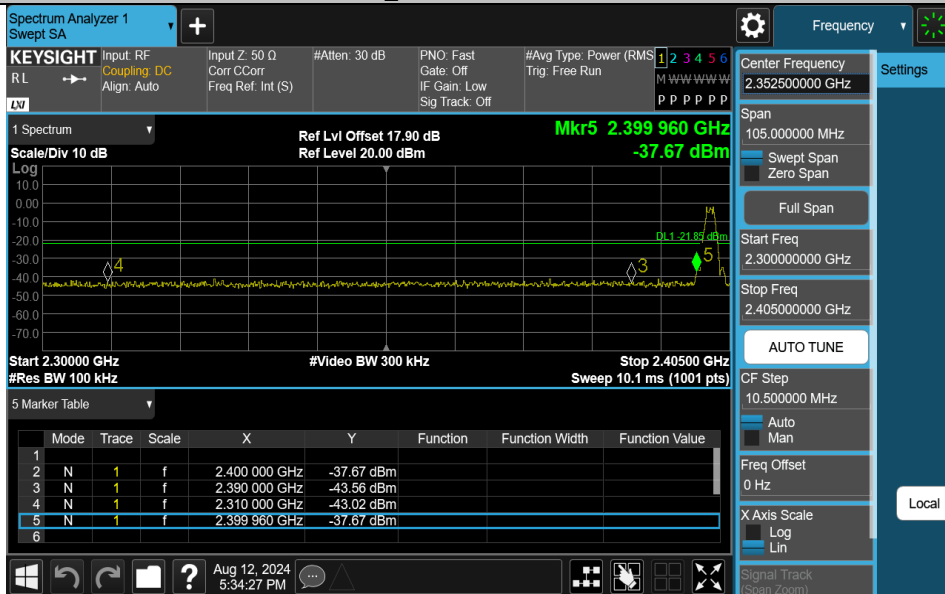
#### BLE\_1M-Ant1-2402-PASS



#### BLE\_1M-Ant1-2480-PASS



#### BLE\_2M-Ant1-2402-PASS



BLE\_2M-Ant1-2480-PASS

**KEYSIGHT** Spectrum Analyzer 1  
Swept SA

Input: RF  
Coupling: DC  
Align: Auto

Input Z: 50 Ω  
Corr: CCorr  
Freq Ref: Int (S)

#Atten: 30 dB  
PNO: Fast  
Gate: Off  
IF Gain: Low  
Sig Track: Off

#Avg Type: Power (RMS)  
Trig: Free Run

1 2 3 4 5 6  
M WWW WWW  
P P P P P P

Frequency

Center Frequency  
2.510000000 GHz

Span  
80.00000000 MHz

Swept Span  
Zero Span

Full Span

Start Freq  
2.470000000 GHz

Stop Freq  
2.550000000 GHz

AUTO TUNE

CF Step  
8.000000 MHz

Auto  
Man

Freq Offset  
0 Hz

X Axis Scale  
Log  
Lin

Signal Track  
(Span Zoom)

1 Spectrum

Scale/Div 10 dB

Log

Ref Lvl Offset 17.74 dB  
Ref Level 20.00 dBm

Mkr4 2.528 00 GHz  
-41.26 dBm

Start 2.47000 GHz #Video BW 300 kHz Stop 2.55000 GHz  
#Res BW 100 kHz Sweep 7.67 ms (1001 pts)

5 Marker Table

1	Mode	Trace	Scale	X	Y	Function	Function Width	Function Value
2	N	1	f	2.483 50 GHz	-43.78 dBm			
3	N	1	f	2.500 00 GHz	-43.91 dBm			
4	N	1	f	2.528 00 GHz	-41.26 dBm			
5								
6								

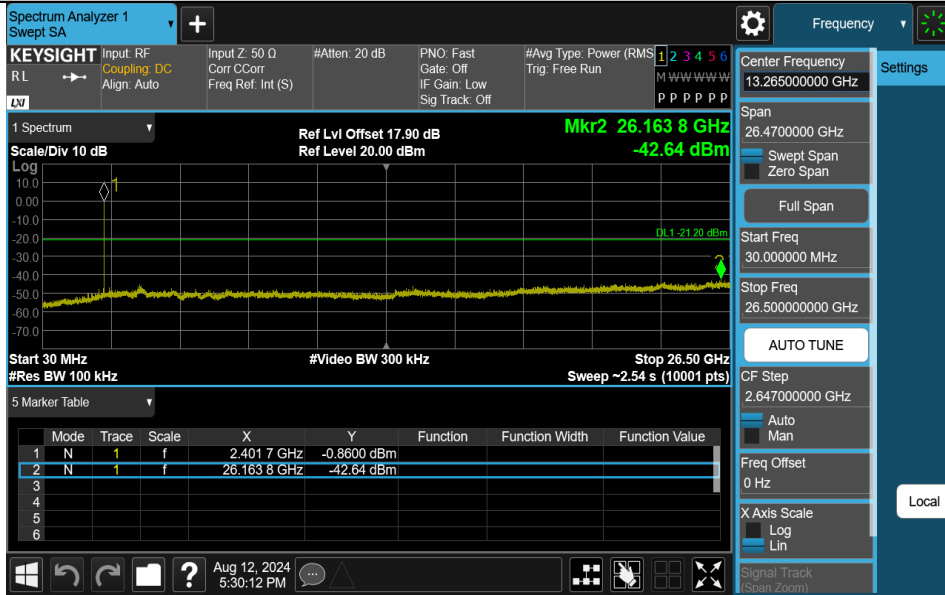
Windows Taskbar: Aug 12, 2024 5:38:00 PM

## Appendix F: Conducted Spurious Emission Test Result

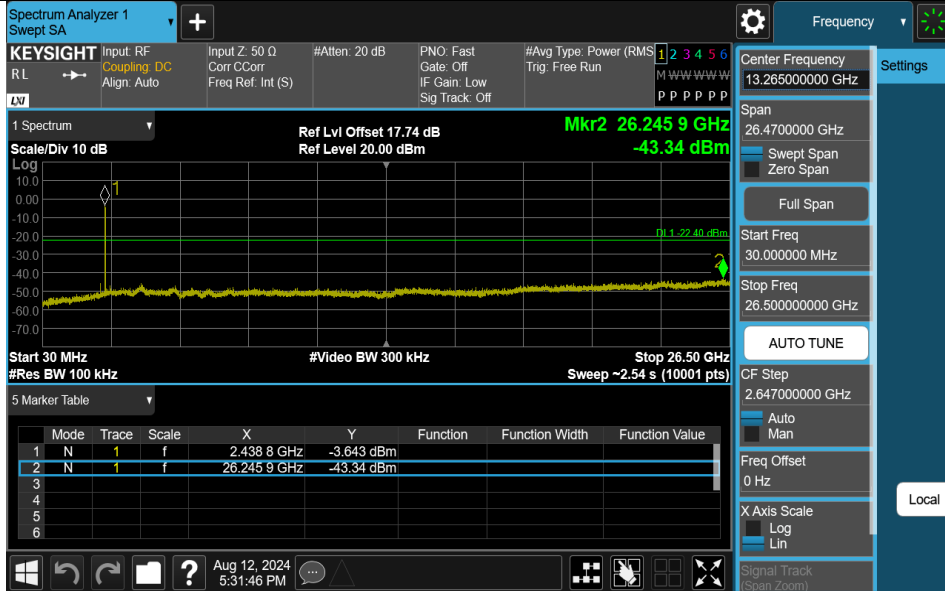
Test Mode	Antenna	Frequency[MHz]	FreqRange [MHz]	RefLevel [dBm]	Result[dBm]	Limit[dBm]	Verdict
BLE_1M	Ant1	2402	30~26500	-1.20	-42.64	≤-21.2	PASS
BLE_1M	Ant1	2440	30~26500	-2.40	-43.34	≤-22.4	PASS
BLE_1M	Ant1	2480	30~26500	-3.17	-42.53	≤-23.17	PASS
BLE_2M	Ant1	2402	30~26500	-1.85	-42.62	≤-21.85	PASS
BLE_2M	Ant1	2440	30~26500	-3.88	-42.99	≤-23.88	PASS
BLE_2M	Ant1	2480	30~26500	-3.69	-43.17	≤-23.69	PASS

### Test Graphs

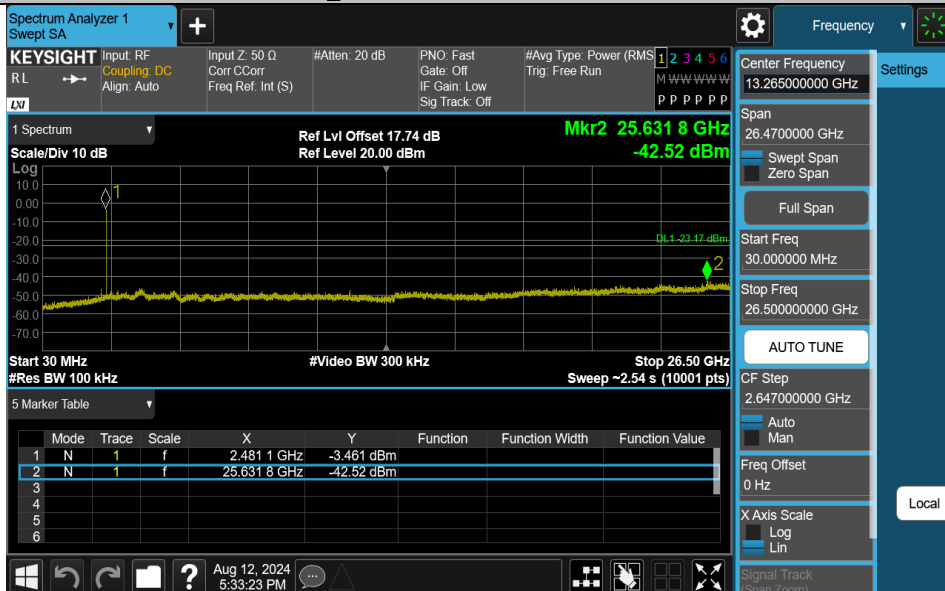
#### BLE\_1M-Ant1-2402-30~26500-PASS



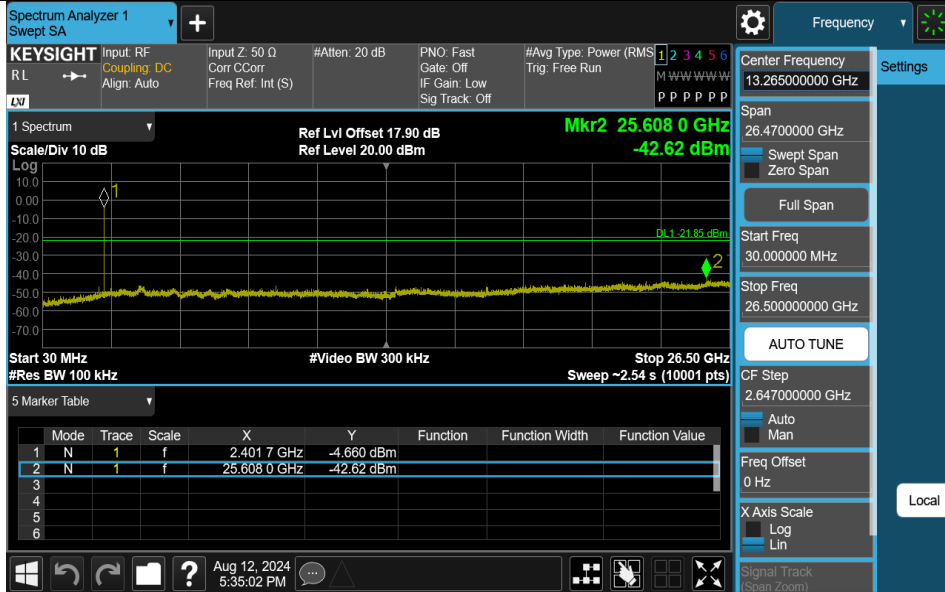
#### BLE\_1M-Ant1-2440-30~26500-PASS



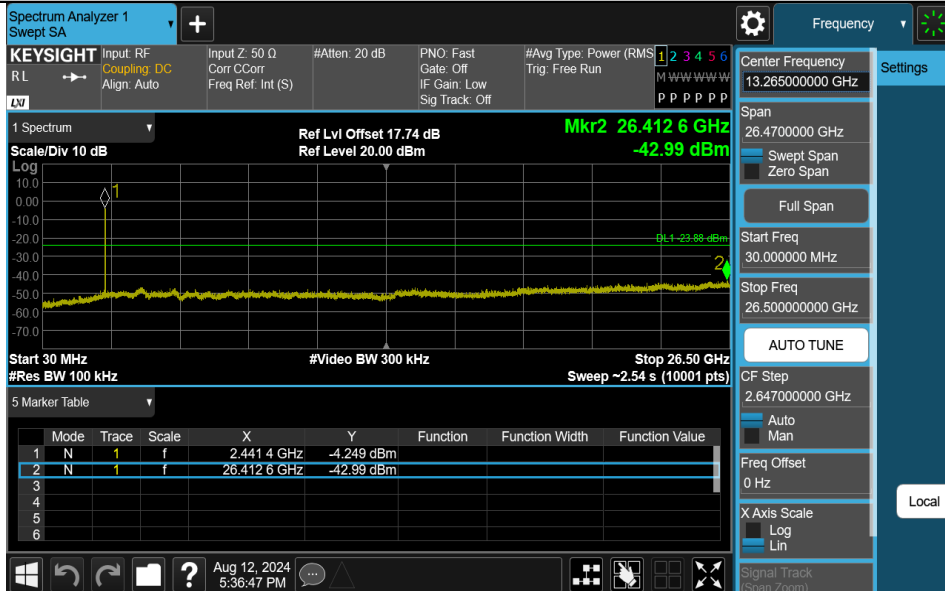
#### BLE\_1M-Ant1-2480-30~26500-PASS



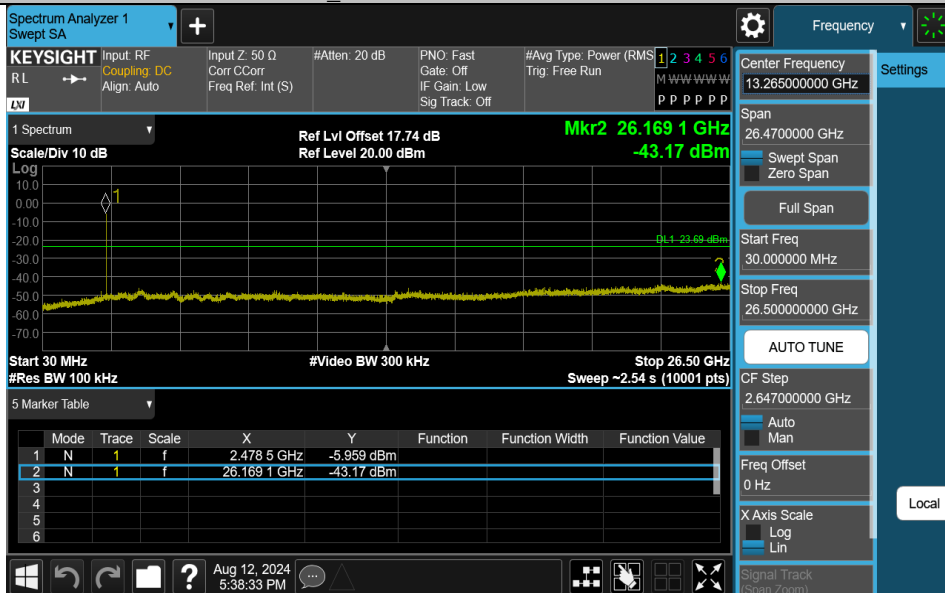
BLE\_2M-Ant1-2402-30~26500-PASS



BLE\_2M-Ant1-2440-30~26500-PASS



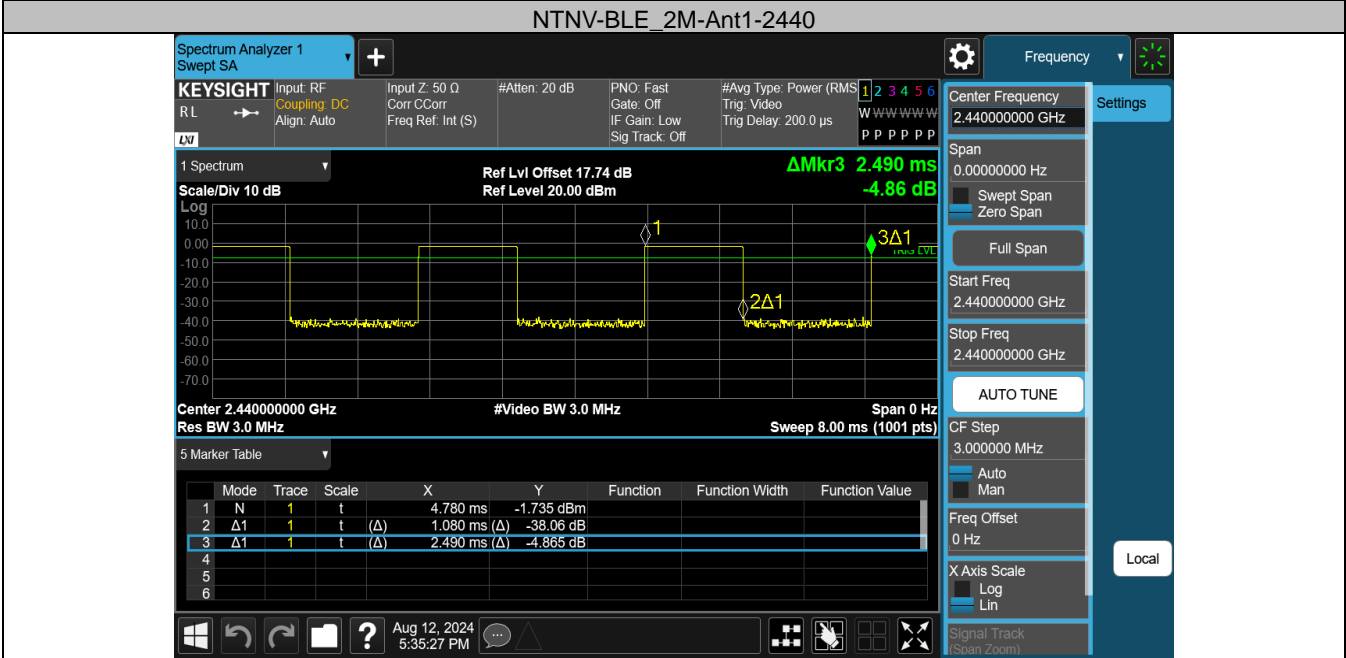
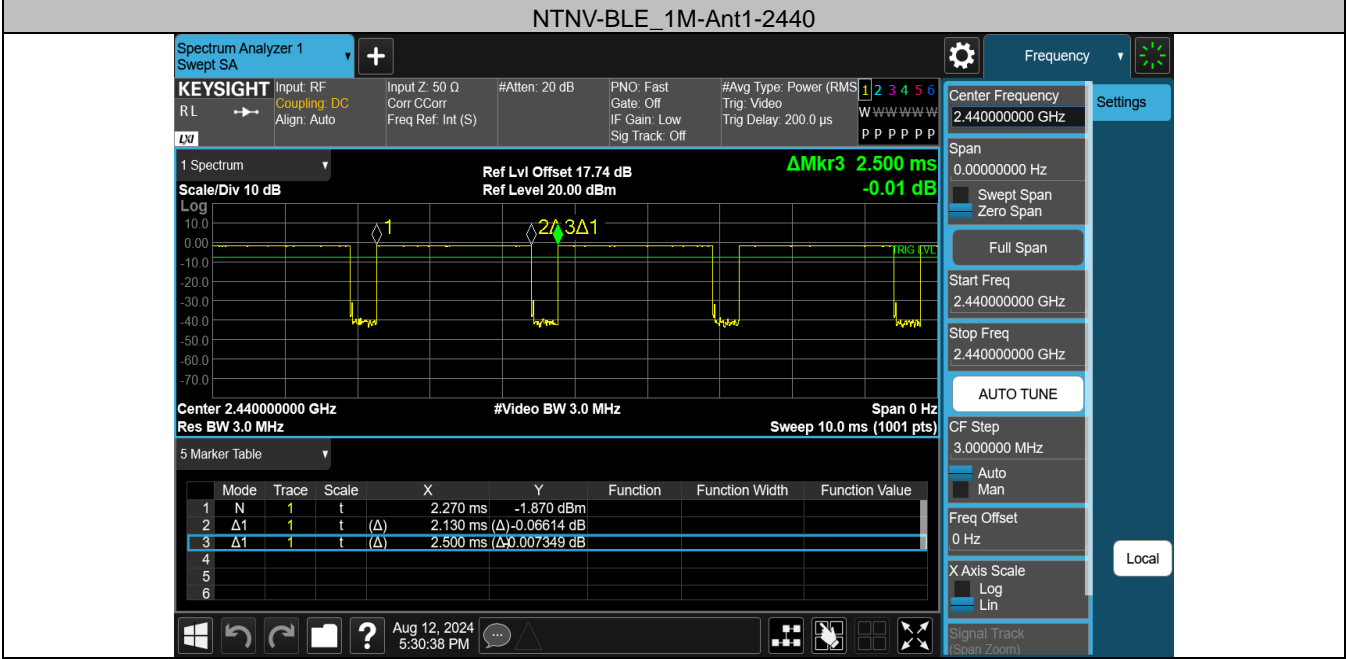
BLE\_2M-Ant1-2480-30~26500-PASS



### Appendix G: Duty Cycle Test Result

Test Mode	Antenna	Frequency[MHz]	ON Time [ms]	Period [ms]	Duty Cycle [%]	Duty Cycle Factor[dB]
BLE_1M	Ant1	2440	2.13	2.50	85.20	0.70
BLE_2M	Ant1	2440	1.08	2.49	43.37	3.63

### Test Graphs



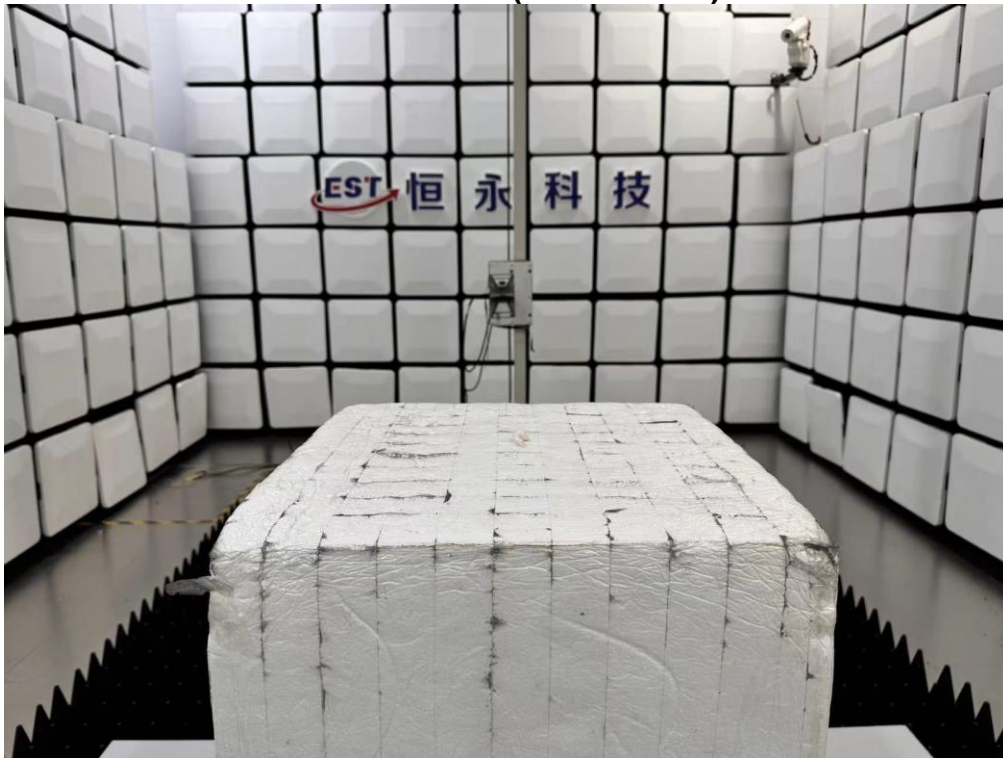


## 11. TEST SETUP PHOTO

Radiated Test (Below 1GHz)



Radiated Test (Above 1GHz)



## 12. EUT PHOTO

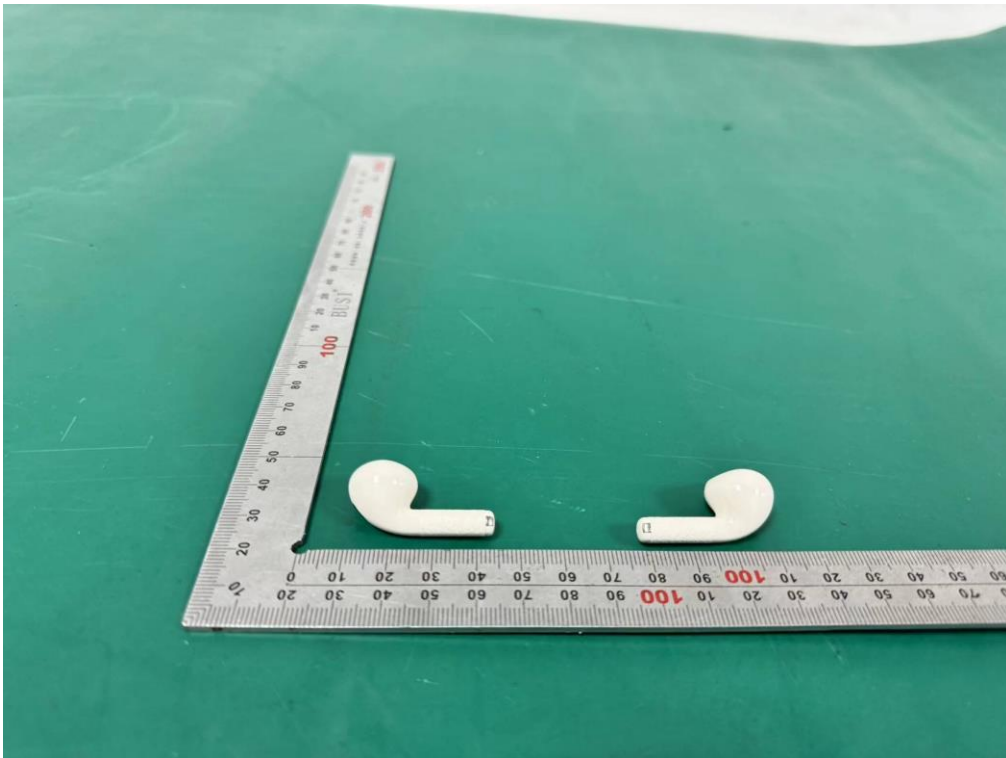
External Photos  
M/N: EDF280041



**External Photos**  
M/N: EDF280041



**External Photos**  
M/N: EDF280041



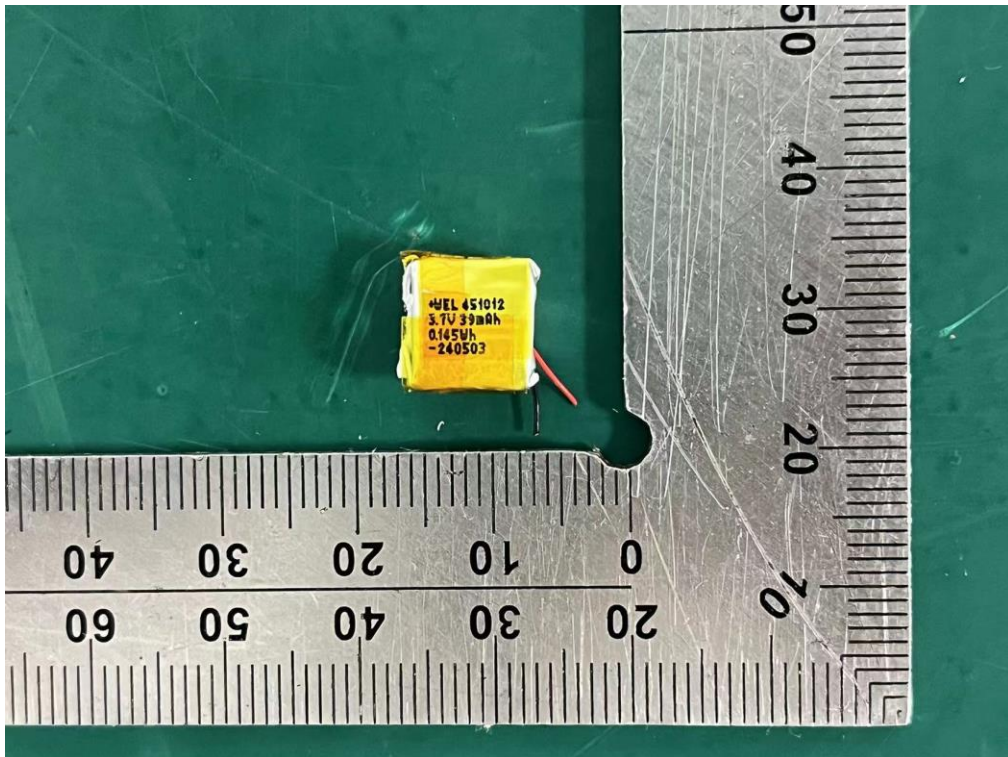
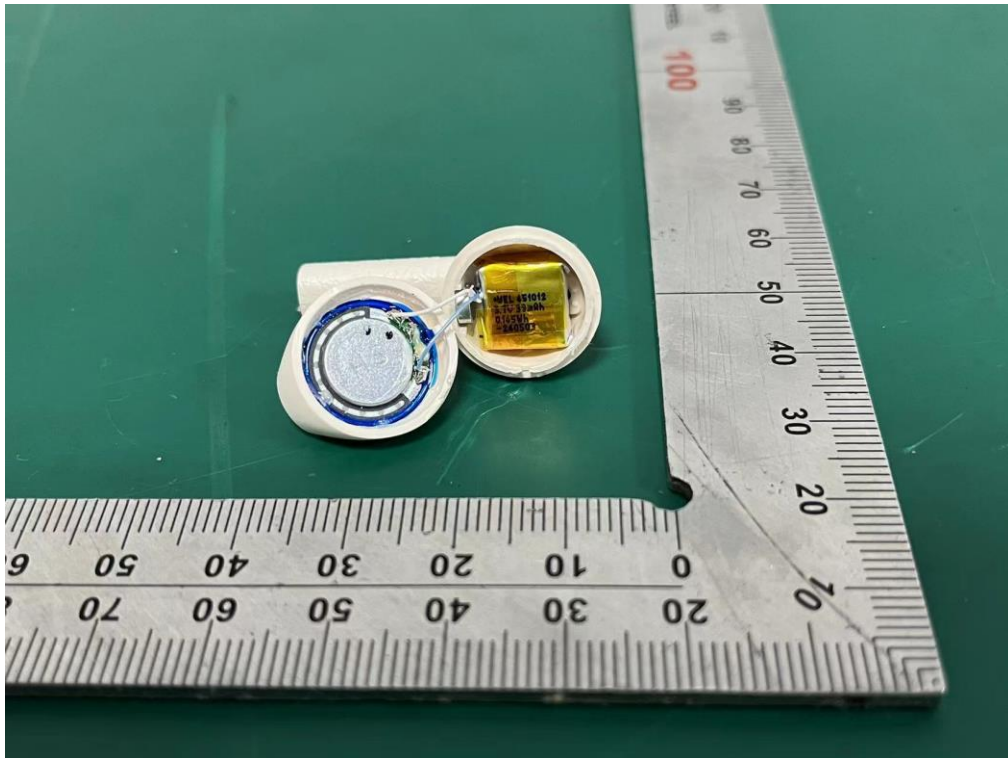
**External Photos**  
M/N: EDF280041



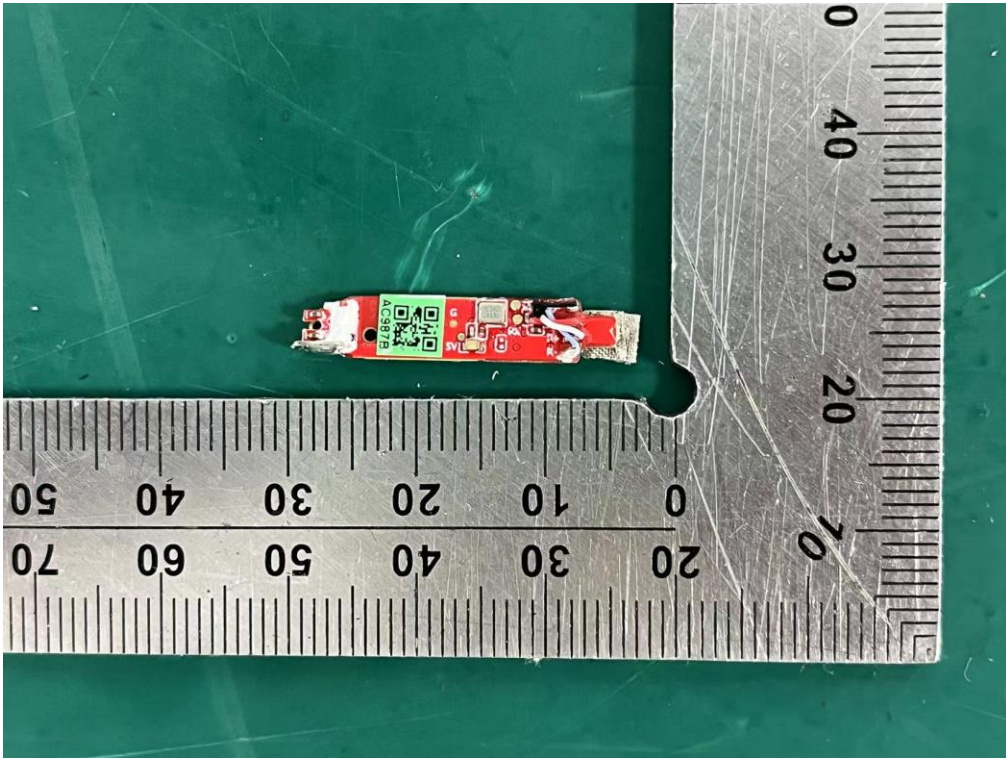
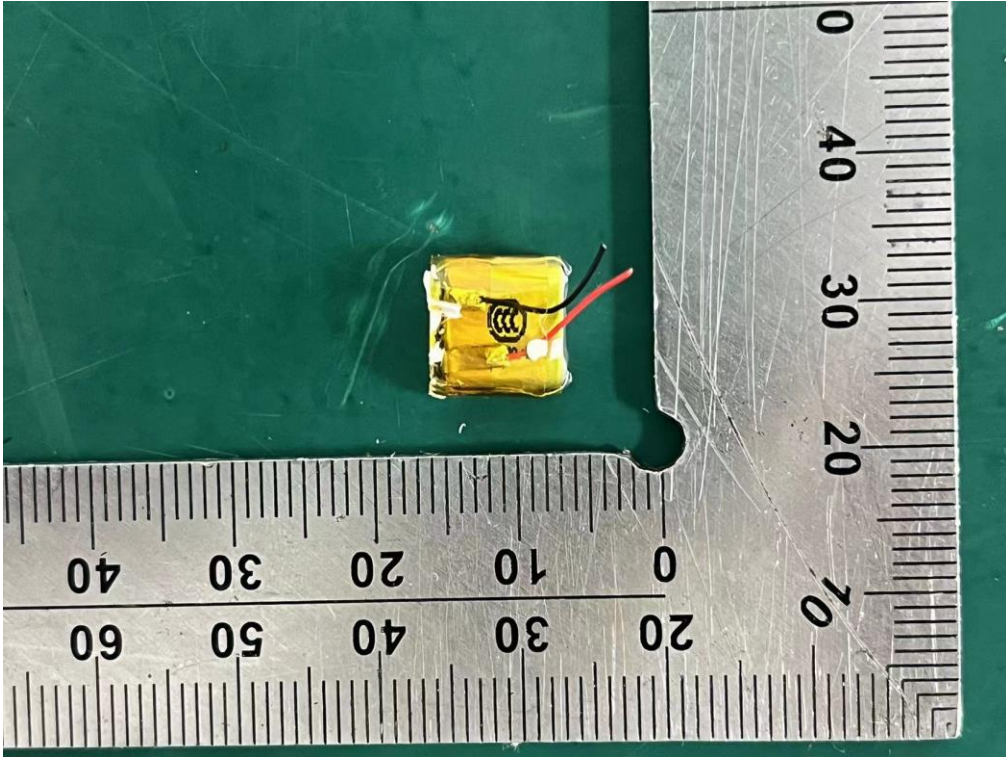
**External Photos**  
M/N: EDF280041



**Internal Photos**  
M/N: EDF280041

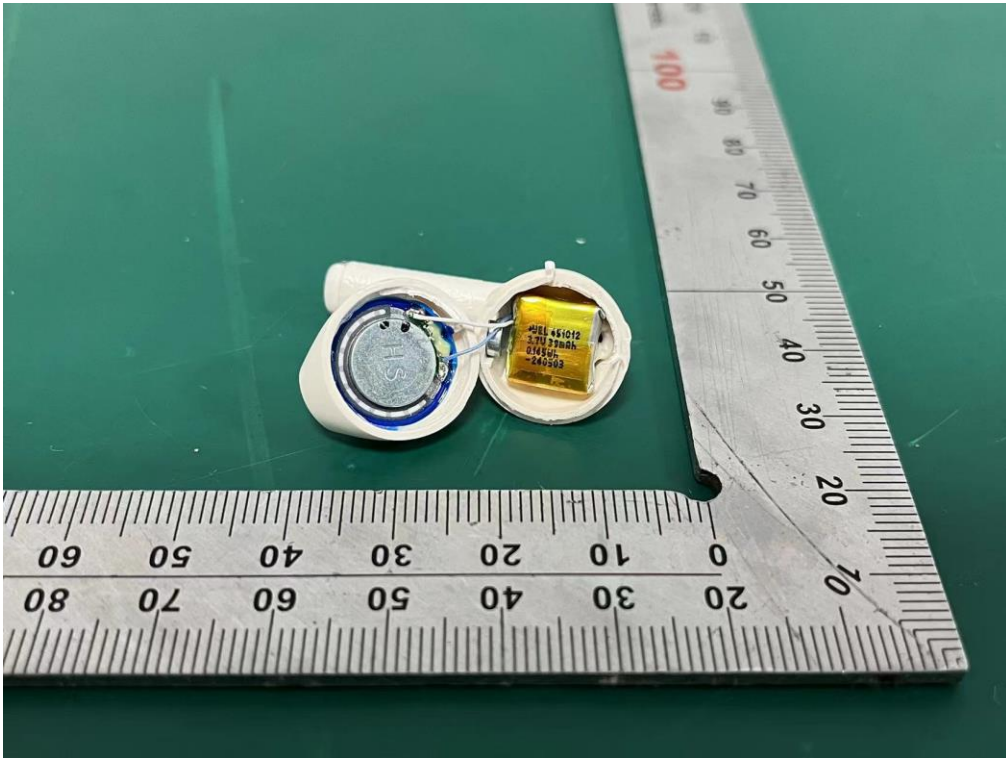
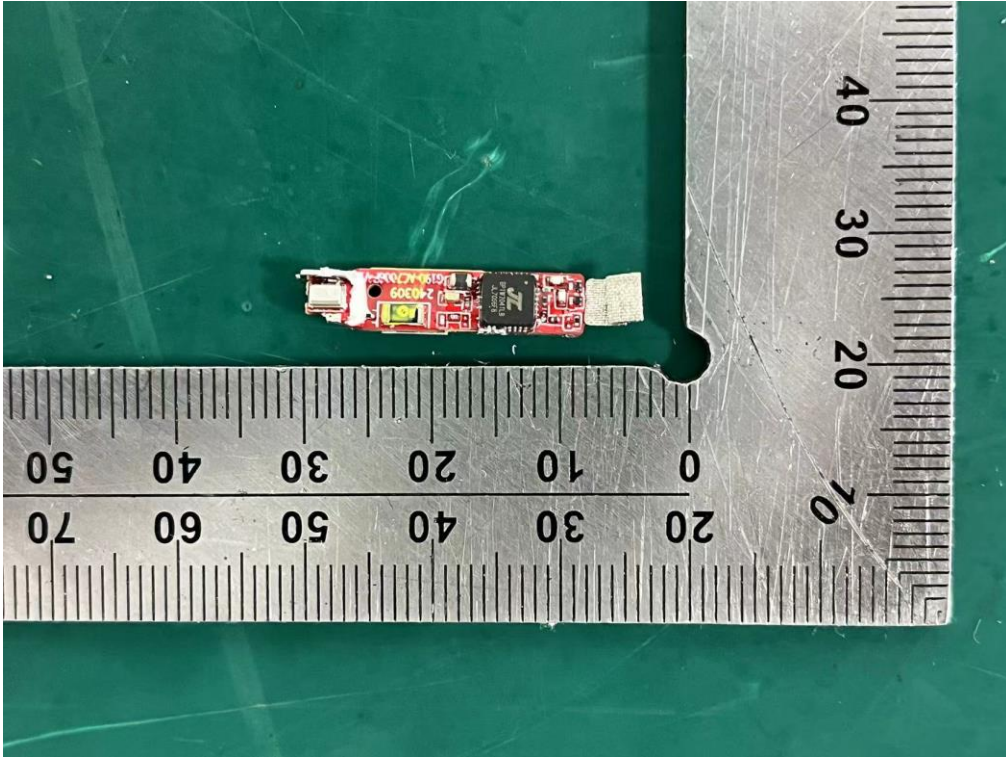


**Internal Photos**  
M/N: EDF280041

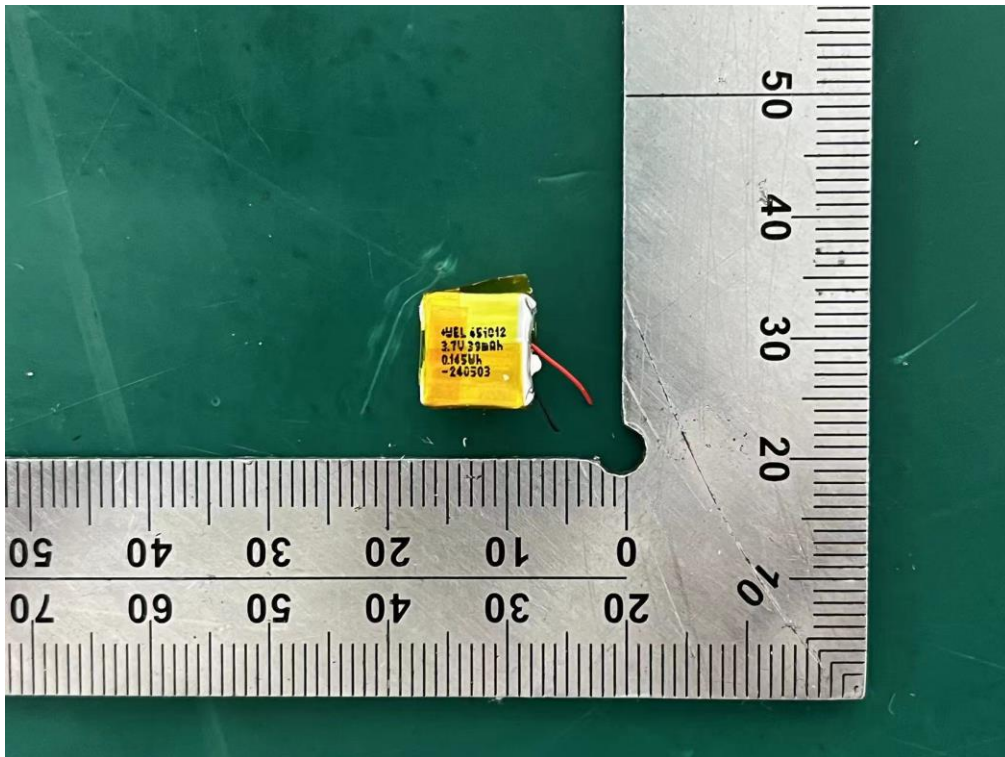
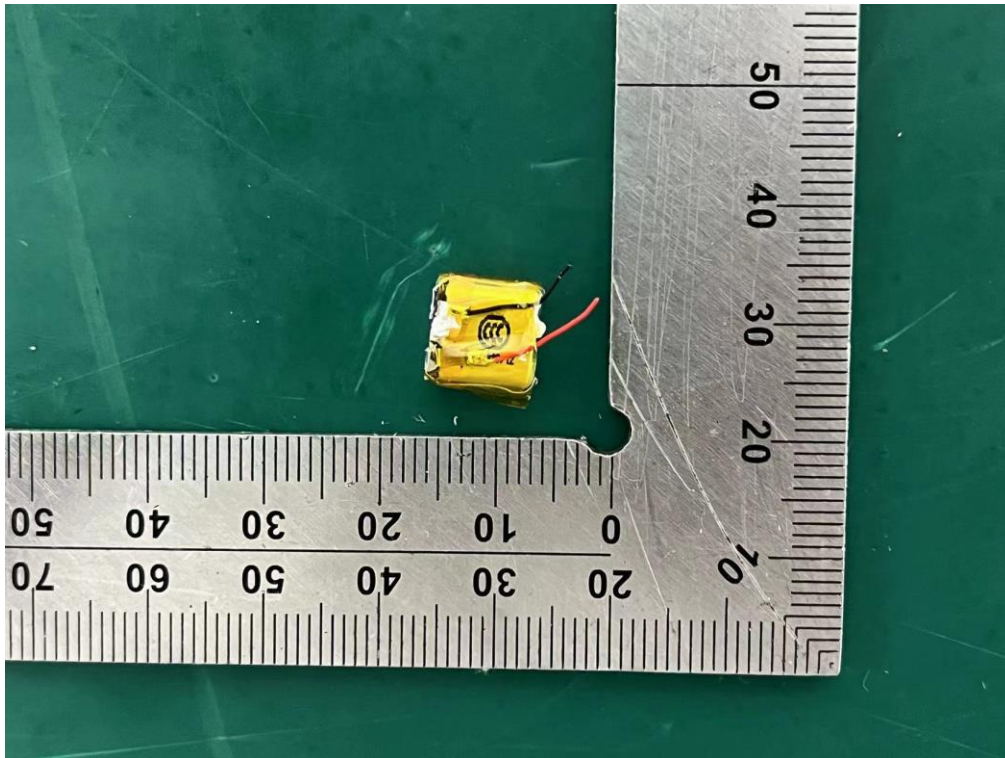




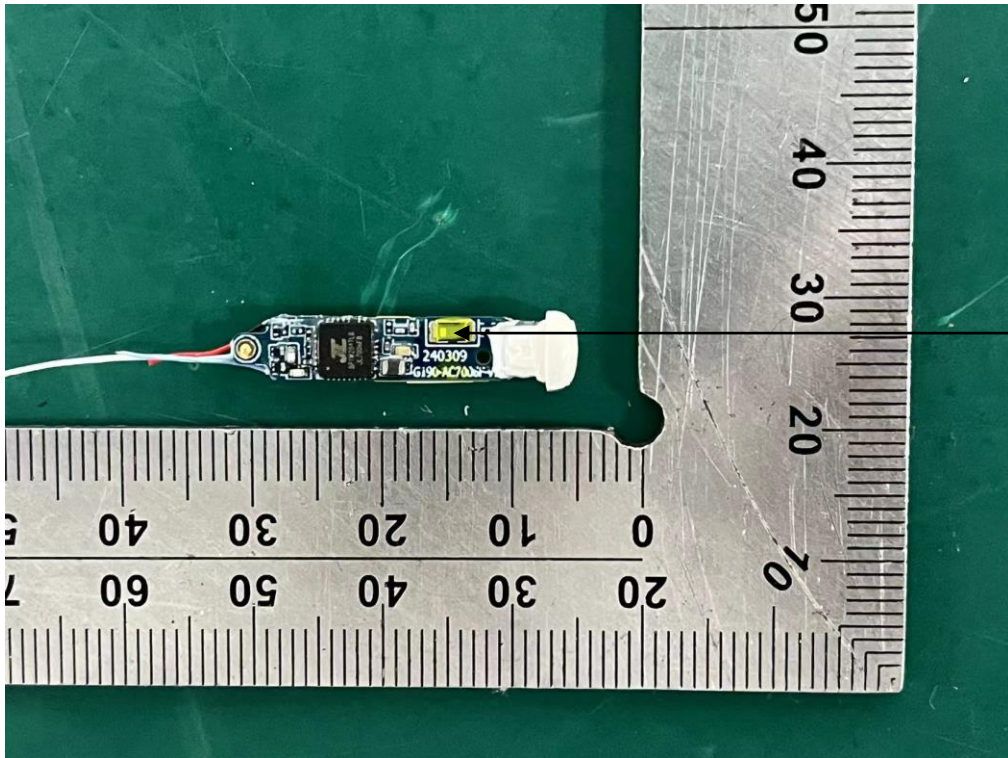
**Internal Photos**  
M/N: EDF280041



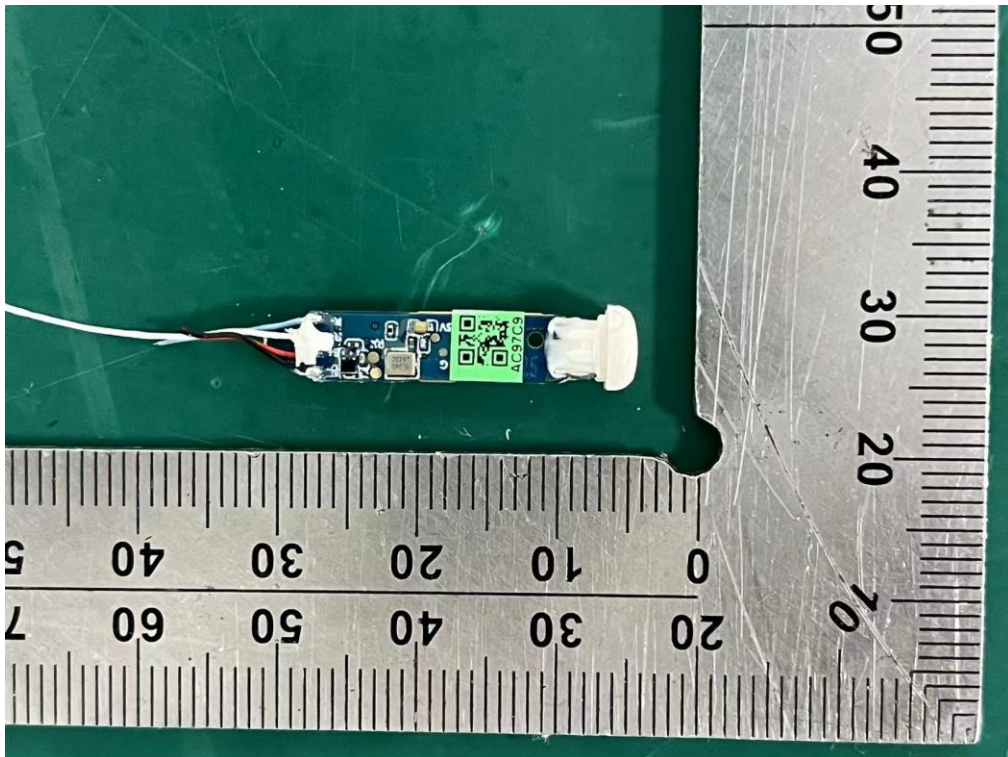
**Internal Photos**  
M/N: EDF280041



**Internal Photos**  
M/N: EDF280041



Bluetooth  
Antenna



**End of Test Report**