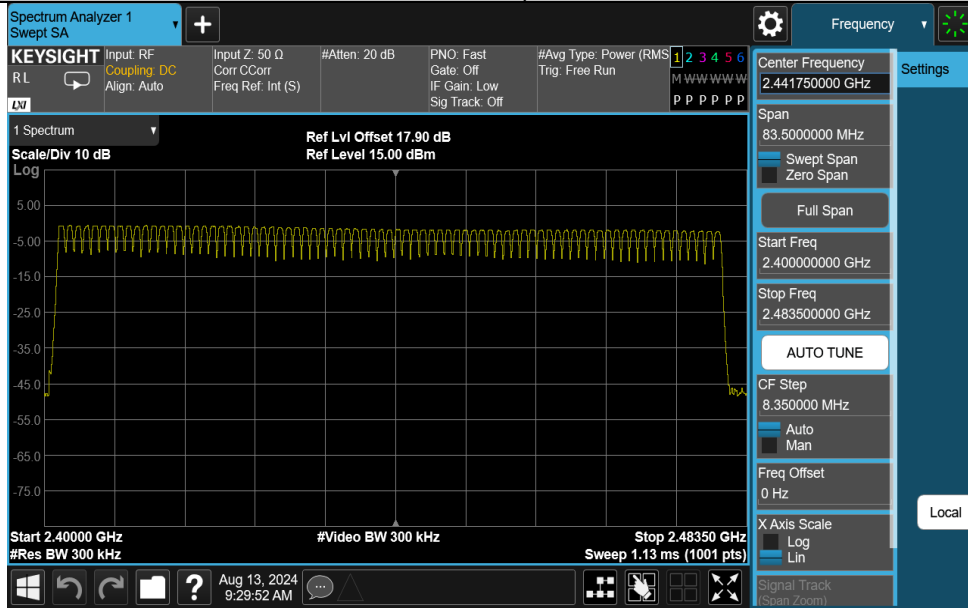


Appendix E: Number of hopping channels Test Result

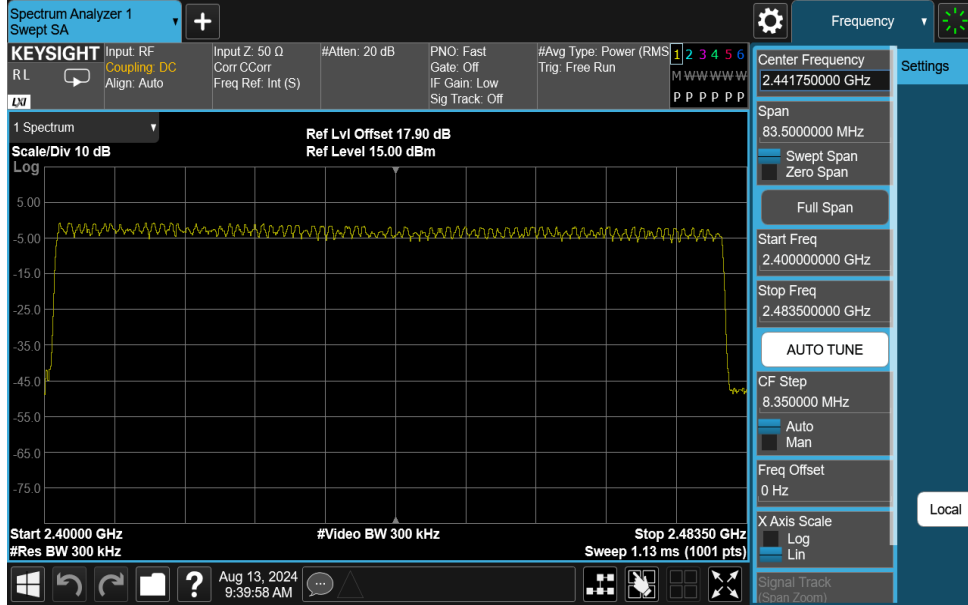
Test Mode	Antenna	Frequency[MHz]	Result[Num]	Limit[Num]	Verdict
DH5	Ant1	Hop	79	≥15	PASS
2DH5	Ant1	Hop	79	≥15	PASS

Test Graphs

DH5-Ant1-Hop-PASS



2DH5-Ant1-Hop-PASS



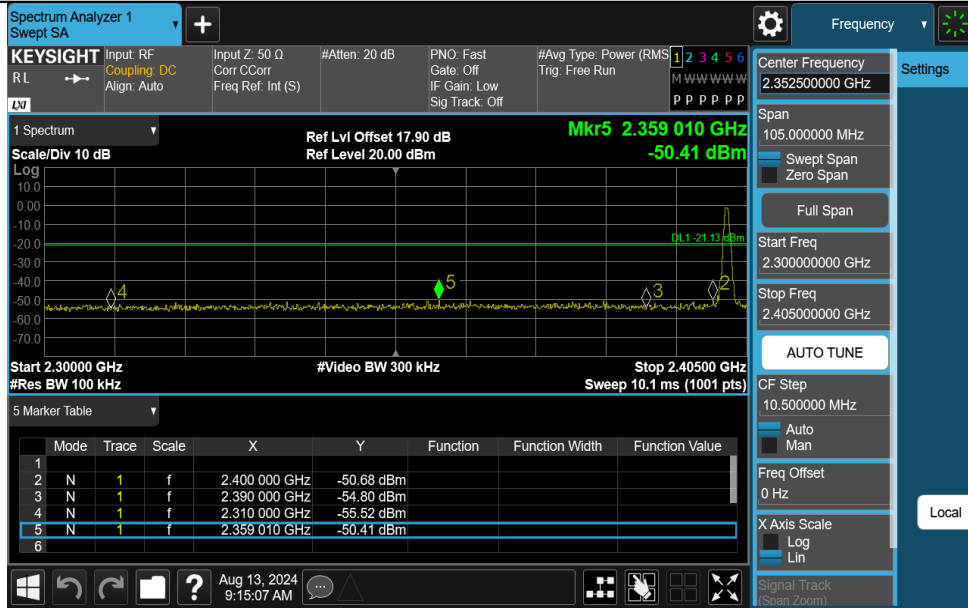


Appendix F: Band edge measurements
Test Result

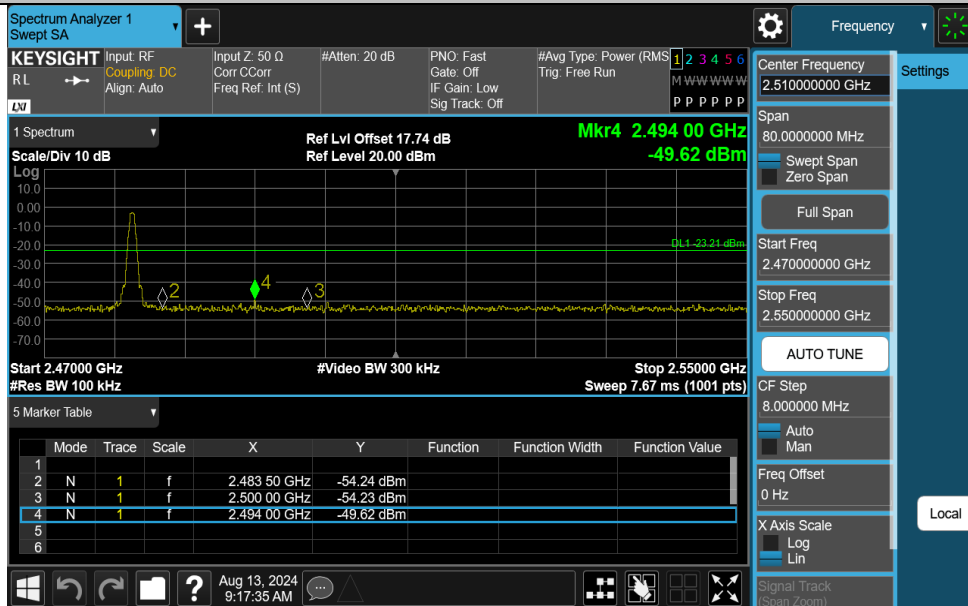
Test Mode	Antenna	ChName	Frequency[MHz]	RefLevel [dBm]	Result [dBm]	Limit [dBm]	Verdict
DH5	Ant1	Low	2402	-1.13	-50.42	≤-21.13	PASS
DH5	Ant1	High	2480	-3.21	-49.62	≤-23.21	PASS
DH5	Ant1	Low	Hop_2402	-1.61	-50.46	≤-21.61	PASS
DH5	Ant1	High	Hop_2480	-2.64	-50.49	≤-22.64	PASS
2DH5	Ant1	Low	2402	-1.21	-50.23	≤-21.21	PASS
2DH5	Ant1	High	2480	-4.35	-50.78	≤-24.35	PASS
2DH5	Ant1	Low	Hop_2402	-2.97	-50.57	≤-22.97	PASS
2DH5	Ant1	High	Hop_2480	-2.87	-50.07	≤-22.87	PASS

Test Graphs

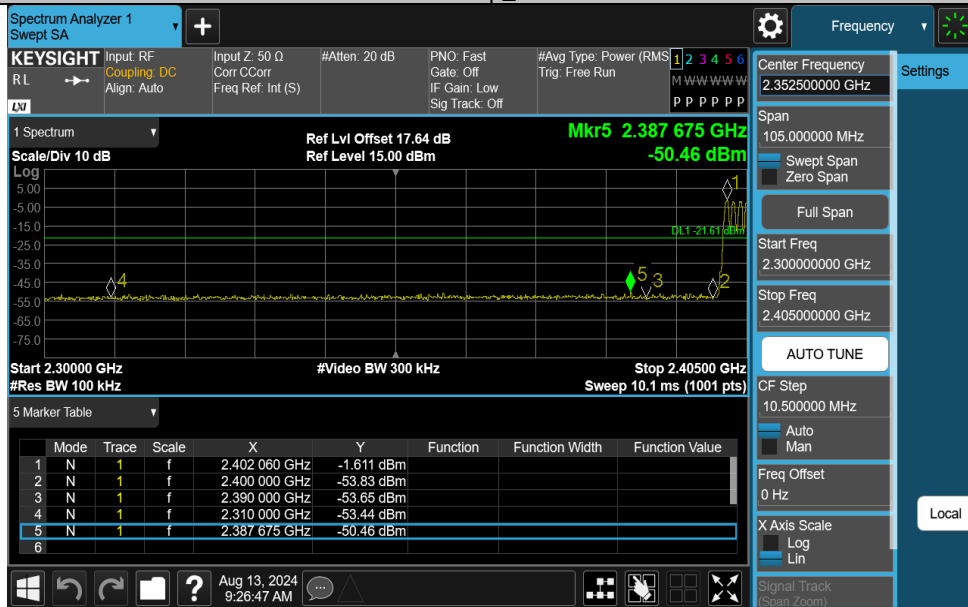
DH5-Ant1-2402-PASS



DH5-Ant1-2480-PASS



DH5-Ant1-Hop_2402-PASS



DH5-Ant1-Hop_2480-PASS

Spectrum Analyzer 1
Swept SA

KEYSIGHT Input: RF Input Z: 50 Ω #Atten: 20 dB PNO: Fast #Avg Type: Power (RMS) 1 2 3 4 5 6
 RL Coupling: DC Corr CCorr Freq Ref: Int (S) Gate: Off Trig: Free Run
 Align: Auto IF Gain: Low Sig Track: Off

Center Frequency: 2.510000000 GHz
 Span: 80.0000000 MHz
 Start Freq: 2.470000000 GHz
 Stop Freq: 2.550000000 GHz
 AUTO TUNE
 CF Step: 8.0000000 MHz
 Freq Offset: 0 Hz
 X Axis Scale: Log
 Signal Track (Span Zoom)

1 Spectrum
 Scale/Div 10 dB
 Ref Lvl Offset 17.69 dB
 Ref Level 15.00 dBm
 Mkr4 2.496 08 GHz
 -50.49 dBm
 DL1 -22.64 dBm

Start 2.47000 GHz #Video BW 300 kHz Stop 2.55000 GHz
 #Res BW 100 kHz Sweep 7.67 ms (1001 pts)

Mode	Trace	Scale	X	Y	Function	Function Width	Function Value
1	N	1	f	2.477 20 GHz	-2.638 dBm		
2	N	1	f	2.483 50 GHz	-52.36 dBm		
3	N	1	f	2.500 00 GHz	-52.86 dBm		
4	N	1	f	2.496 08 GHz	-50.49 dBm		
5							
6							

Aug 13, 2024 9:26:24 AM

2DH5-Ant1-2402-PASS

Spectrum Analyzer 1
Swept SA

KEYSIGHT Input: RF Input Z: 50 Ω #Atten: 20 dB PNO: Fast #Avg Type: Power (RMS) 1 2 3 4 5 6
 RL Coupling: DC Corr CCorr Freq Ref: Int (S) Gate: Off Trig: Free Run
 Align: Auto IF Gain: Low Sig Track: Off

Center Frequency: 2.352500000 GHz
 Span: 105.0000000 MHz
 Start Freq: 2.300000000 GHz
 Stop Freq: 2.405000000 GHz
 AUTO TUNE
 CF Step: 10.5000000 MHz
 Freq Offset: 0 Hz
 X Axis Scale: Log
 Signal Track (Span Zoom)

1 Spectrum
 Scale/Div 10 dB
 Ref Lvl Offset 17.90 dB
 Ref Level 20.00 dBm
 Mkr5 2.348 825 GHz
 -50.23 dBm
 DL1 -21.21 dBm

Start 2.30000 GHz #Video BW 300 kHz Stop 2.40500 GHz
 #Res BW 100 kHz Sweep 10.1 ms (1001 pts)

Mode	Trace	Scale	X	Y	Function	Function Width	Function Value
1	N	1	f	2.400 000 GHz	-53.00 dBm		
2	N	1	f	2.380 000 GHz	-52.84 dBm		
3	N	1	f	2.310 000 GHz	-54.01 dBm		
4	N	1	f	2.348 825 GHz	-50.23 dBm		
5	N	1	f				
6							

Aug 13, 2024 9:19:05 AM

2DH5-Ant1-2480-PASS

Spectrum Analyzer 1
Swept SA

KEYSIGHT Input: RF Input Z: 50 Ω #Atten: 20 dB PNO: Fast #Avg Type: Power (RMS) 1 2 3 4 5 6
 RL Coupling: DC Corr CCorr Freq Ref: Int (S) Gate: Off Trig: Free Run
 Align: Auto IF Gain: Low Sig Track: Off

Center Frequency: 2.510000000 GHz
 Span: 80.0000000 MHz
 Start Freq: 2.470000000 GHz
 Stop Freq: 2.550000000 GHz
 AUTO TUNE
 CF Step: 8.0000000 MHz
 Freq Offset: 0 Hz
 X Axis Scale: Log
 Signal Track (Span Zoom)

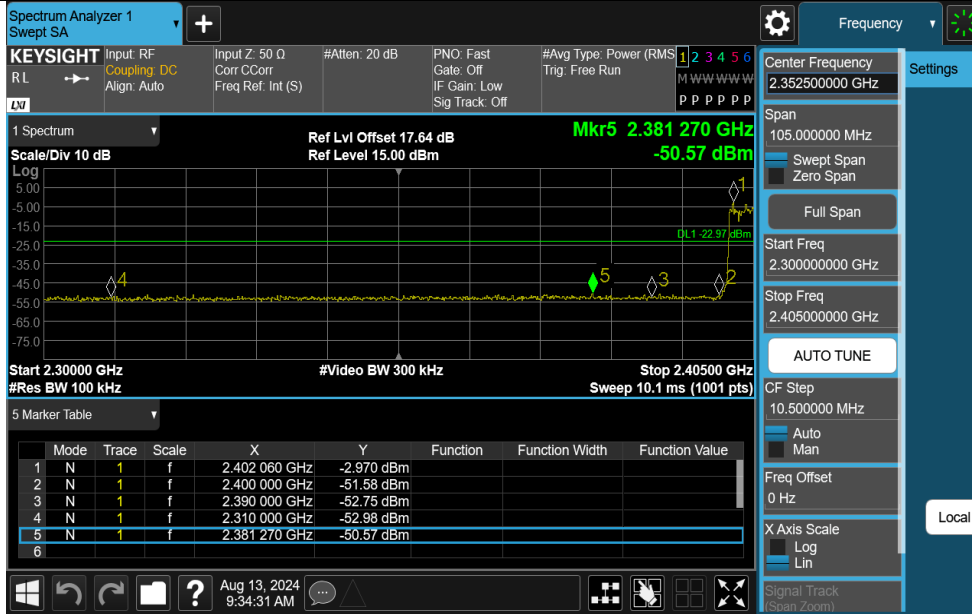
1 Spectrum
 Scale/Div 10 dB
 Ref Lvl Offset 17.74 dB
 Ref Level 20.00 dBm
 Mkr4 2.502 00 GHz
 -50.78 dBm
 DL1 -24.35 dBm

Start 2.47000 GHz #Video BW 300 kHz Stop 2.55000 GHz
 #Res BW 100 kHz Sweep 7.67 ms (1001 pts)

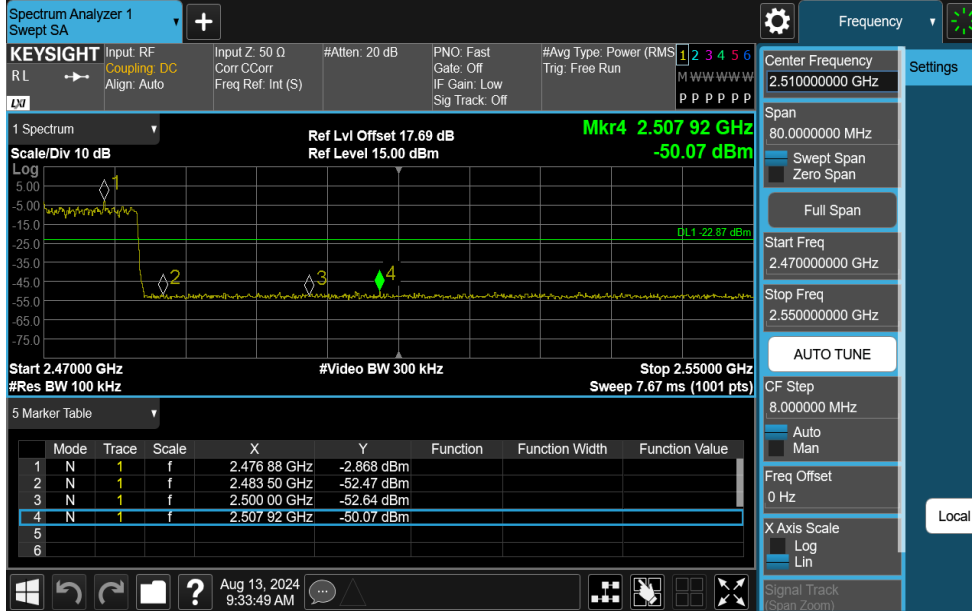
Mode	Trace	Scale	X	Y	Function	Function Width	Function Value
1	N	1	f	2.483 50 GHz	-54.91 dBm		
2	N	1	f	2.500 00 GHz	-54.06 dBm		
3	N	1	f	2.502 00 GHz	-50.78 dBm		
4	N	1	f				
5							
6							

Aug 13, 2024 9:21:18 AM

2DH5-Ant1-Hop_2402-PASS



2DH5-Ant1-Hop_2480-PASS

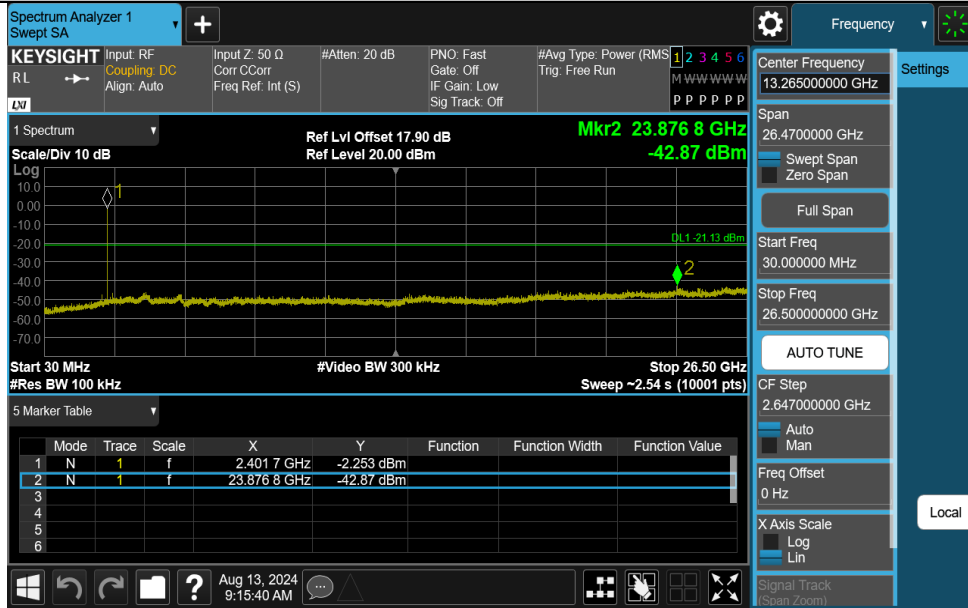


Appendix G: Conducted Spurious Emission Test Result

TestMode	Antenna	Frequency[MHz]	FreqRange [MHz]	RefLevel [dBm]	Result [dBm]	Limit [dBm]	Verdict
DH5	Ant1	2402	30~26500	-1.13	-42.87	≤-21.13	PASS
DH5	Ant1	2441	30~26500	-2.56	-42.92	≤-22.56	PASS
DH5	Ant1	2480	30~26500	-3.21	-43.35	≤-23.21	PASS
2DH5	Ant1	2402	30~26500	-1.21	-42.58	≤-21.21	PASS
2DH5	Ant1	2441	30~26500	-2.37	-42.82	≤-22.37	PASS
2DH5	Ant1	2480	30~26500	-4.35	-43.16	≤-24.35	PASS

Test Graphs

DH5-Ant1-2402-30~26500-PASS

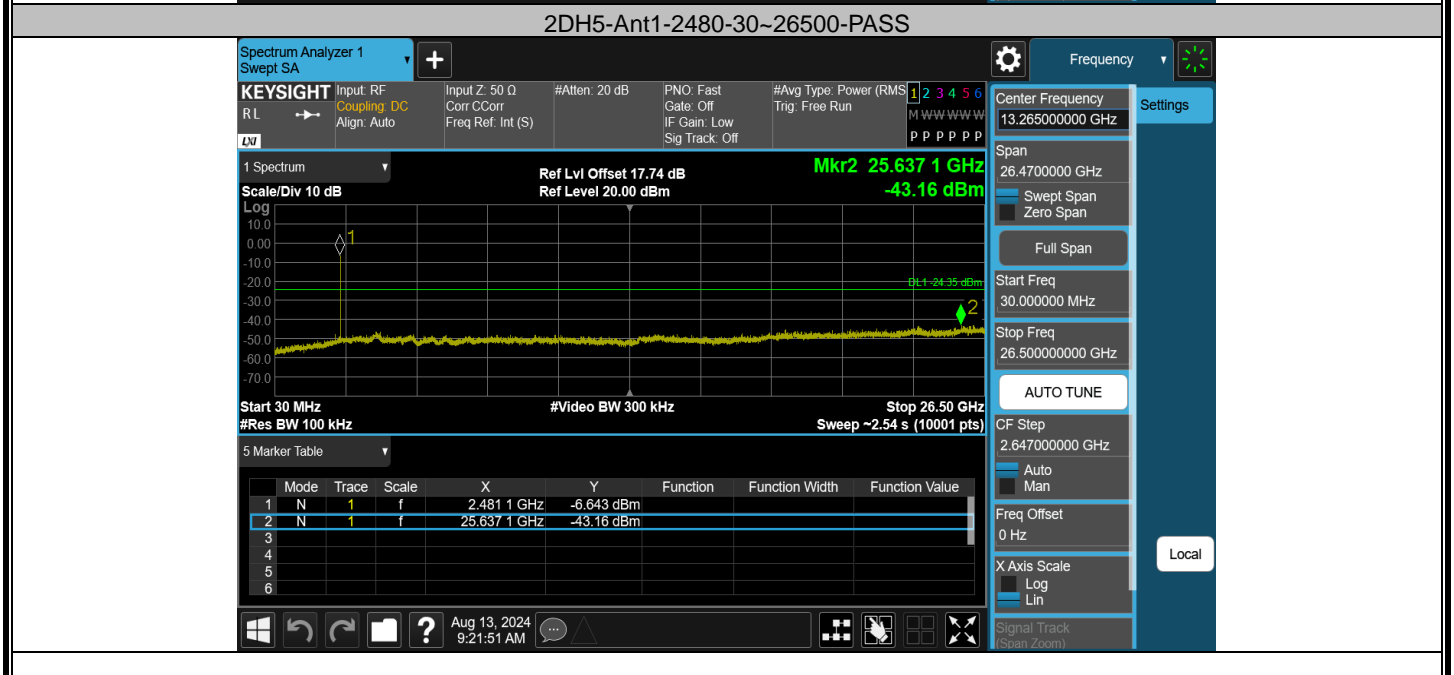
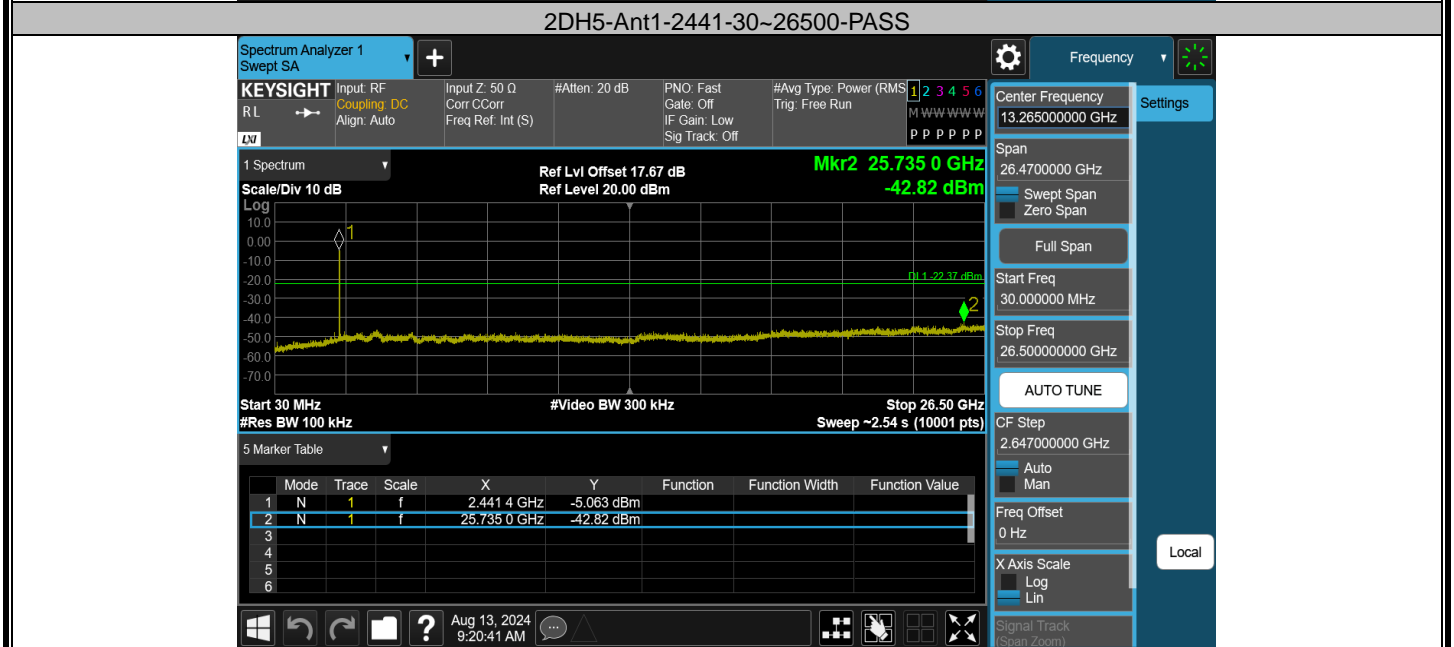
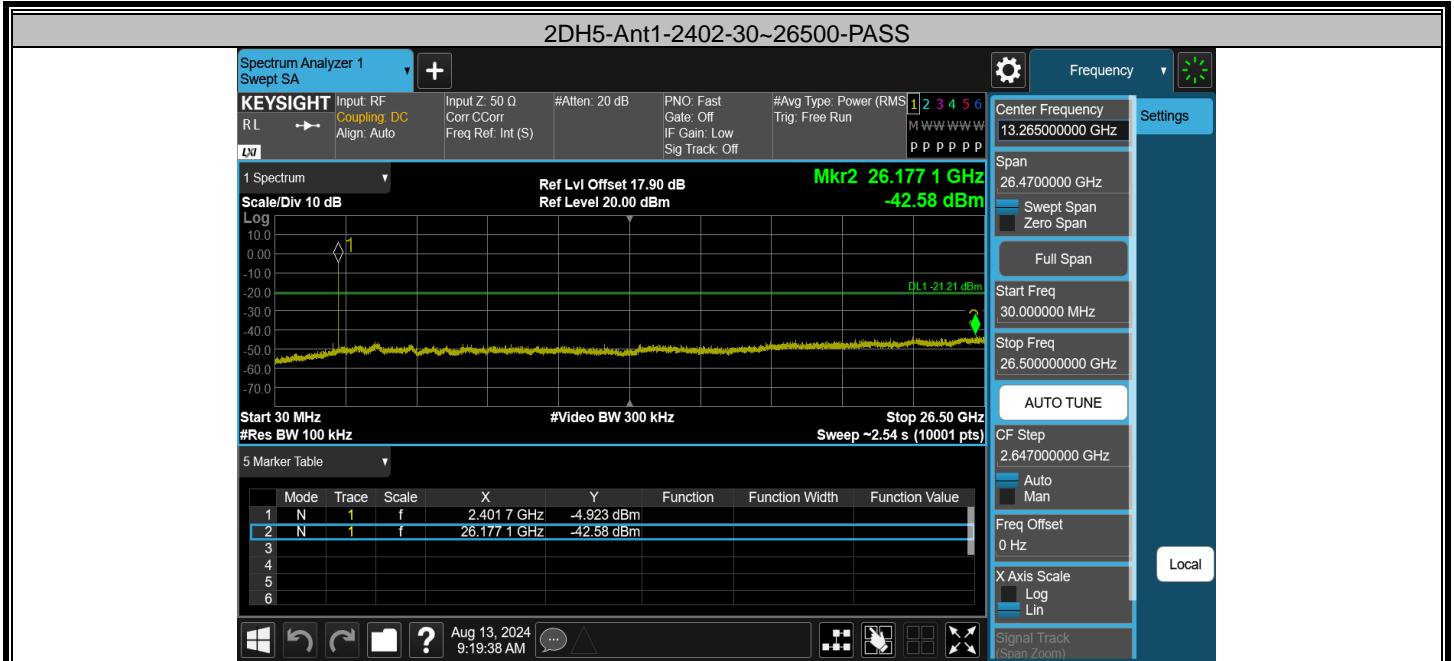


DH5-Ant1-2441-30~26500-PASS



DH5-Ant1-2480-30~26500-PASS







Appendix H: Reference level measurement
Test Result

Test Mode	Antenna	Freq(MHz)	Max.Point[MHz]	Result[dBm]
DH5	Ant1	2402	2402.04	-1.13
DH5	Ant1	2441	2440.88	-2.56
DH5	Ant1	2480	2480.03	-3.21
2DH5	Ant1	2402	2402.04	-1.21
2DH5	Ant1	2441	2440.87	-2.37
2DH5	Ant1	2480	2479.98	-4.35

Test Graphs

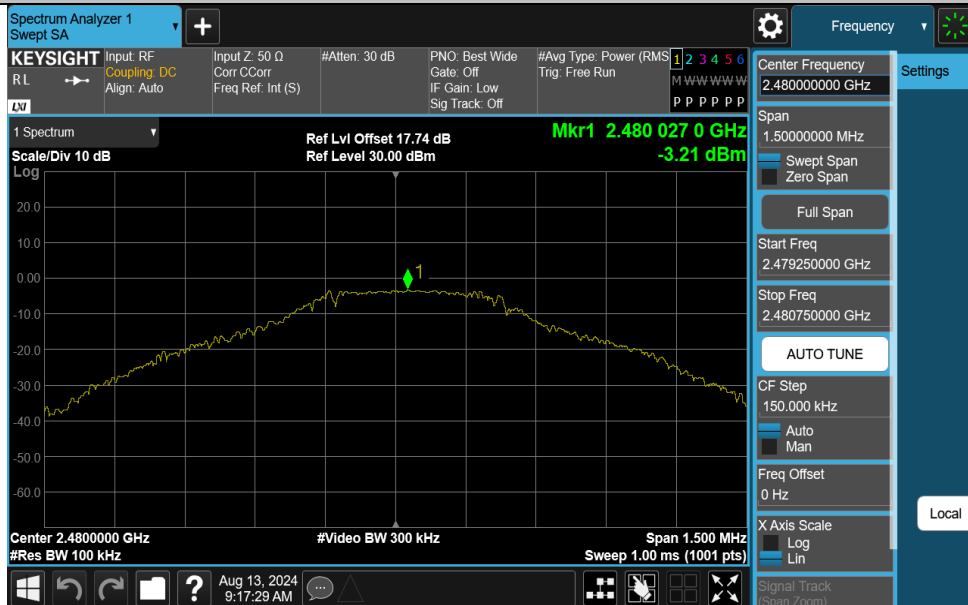
DH5-Ant1-2402-PASS



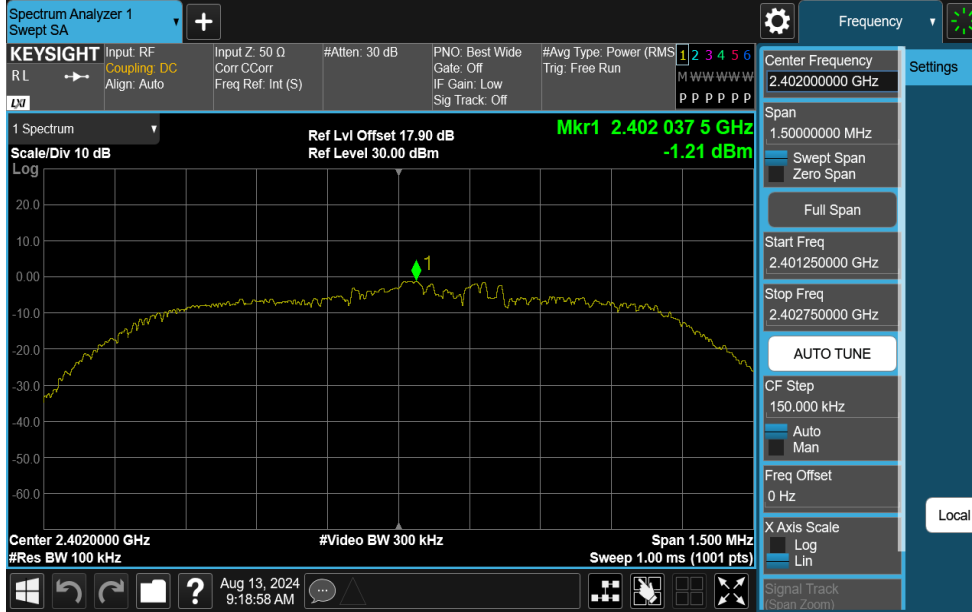
DH5-Ant1-2441-PASS



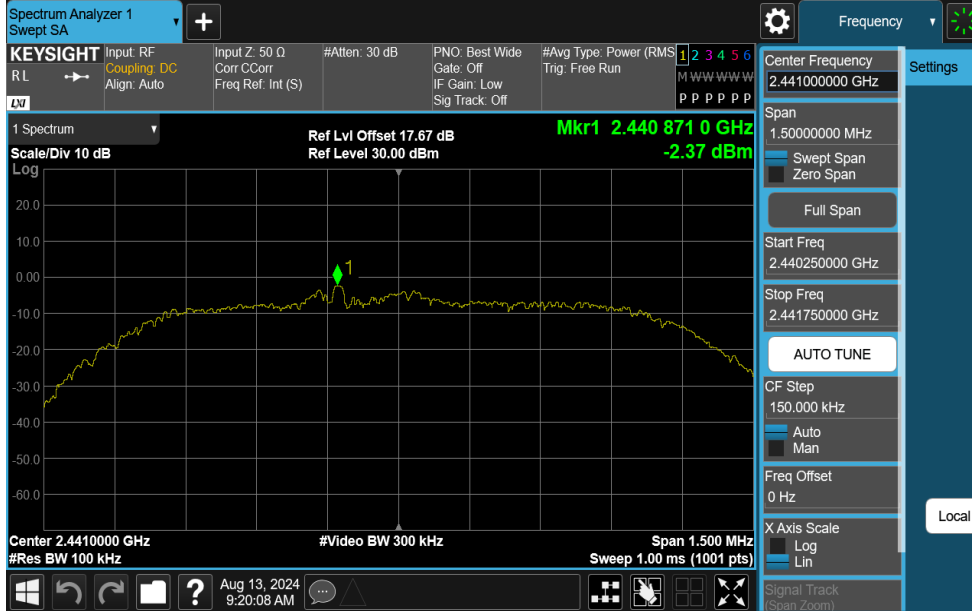
DH5-Ant1-2480-PASS



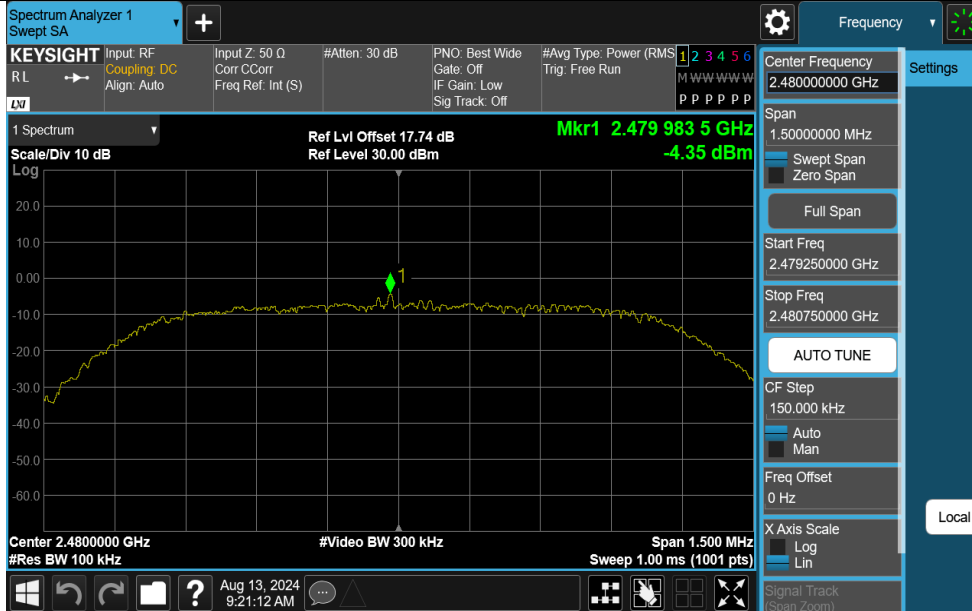
2DH5-Ant1-2402-PASS



2DH5-Ant1-2441-PASS



2DH5-Ant1-2480-PASS



13. TEST SETUP PHOTO

Radiated Test (Below 1GHz)



Radiated Test (Above 1GHz)



14. EUT PHOTO

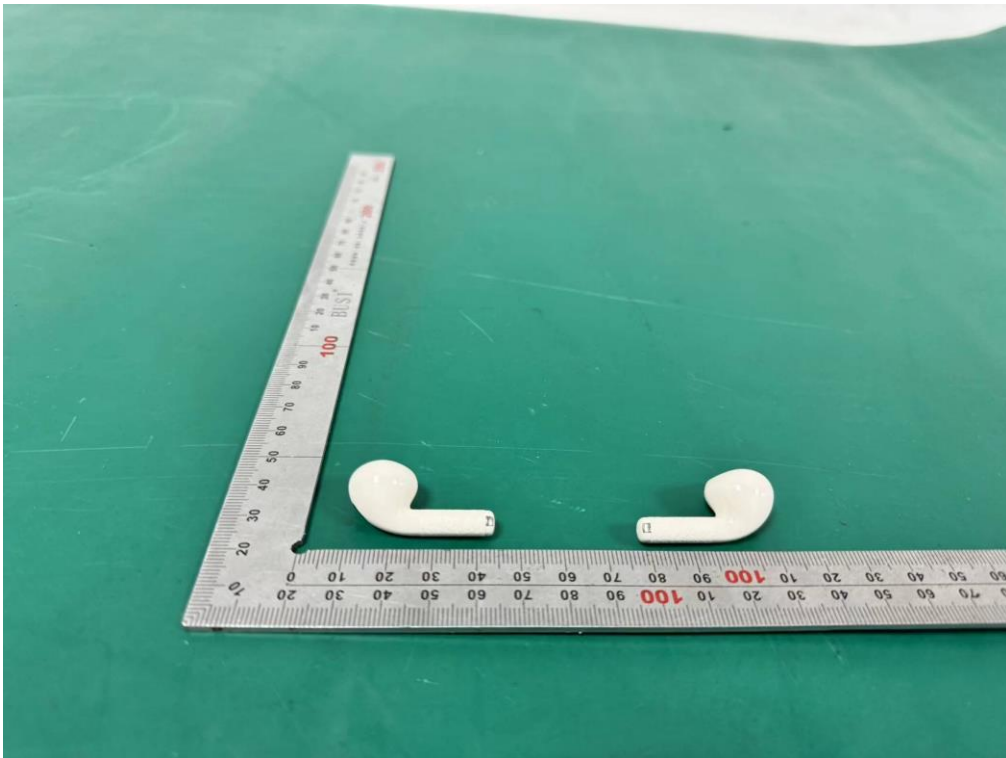
External Photos
M/N: EDF280041



External Photos
M/N: EDF280041



External Photos
M/N: EDF280041



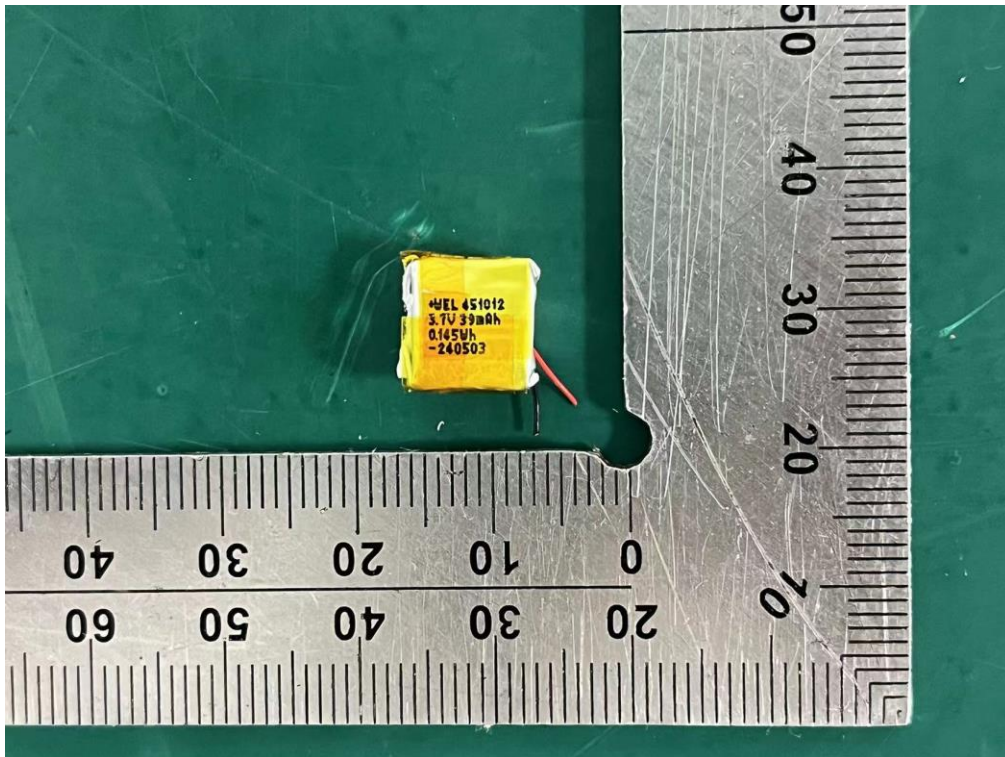
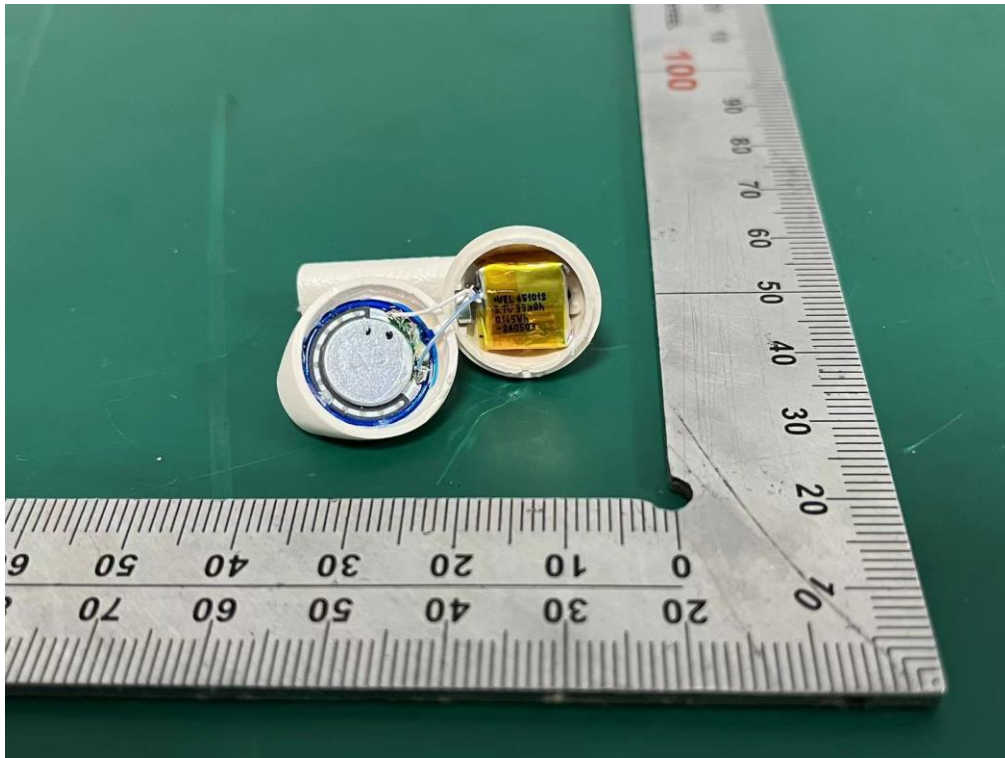
External Photos
M/N: EDF280041



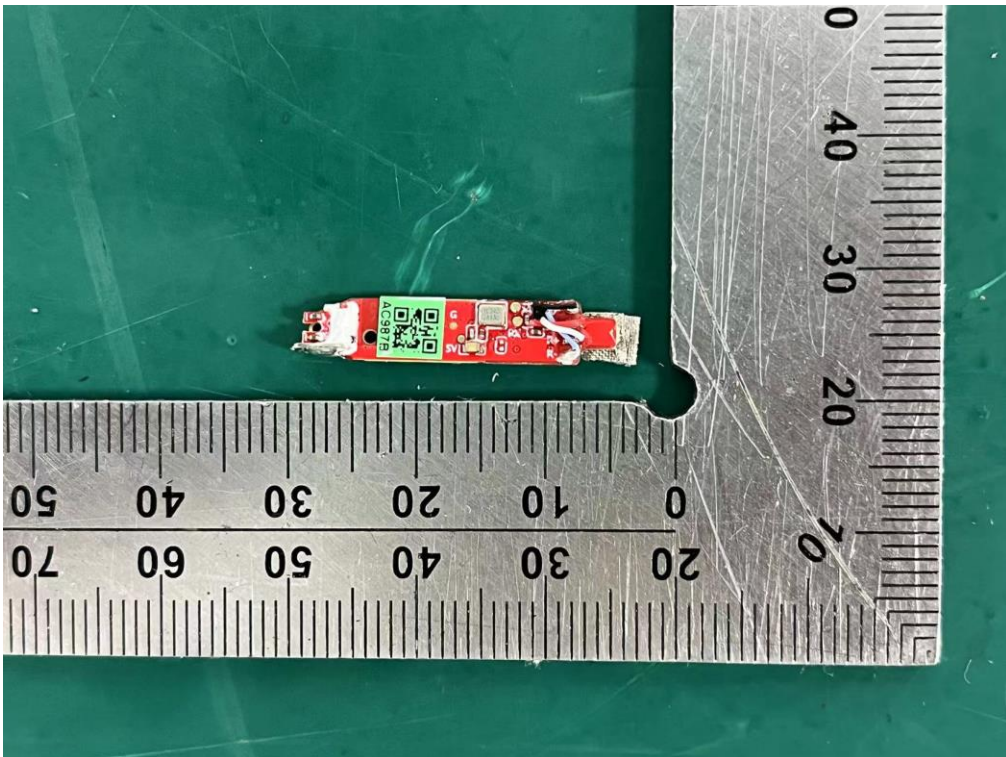
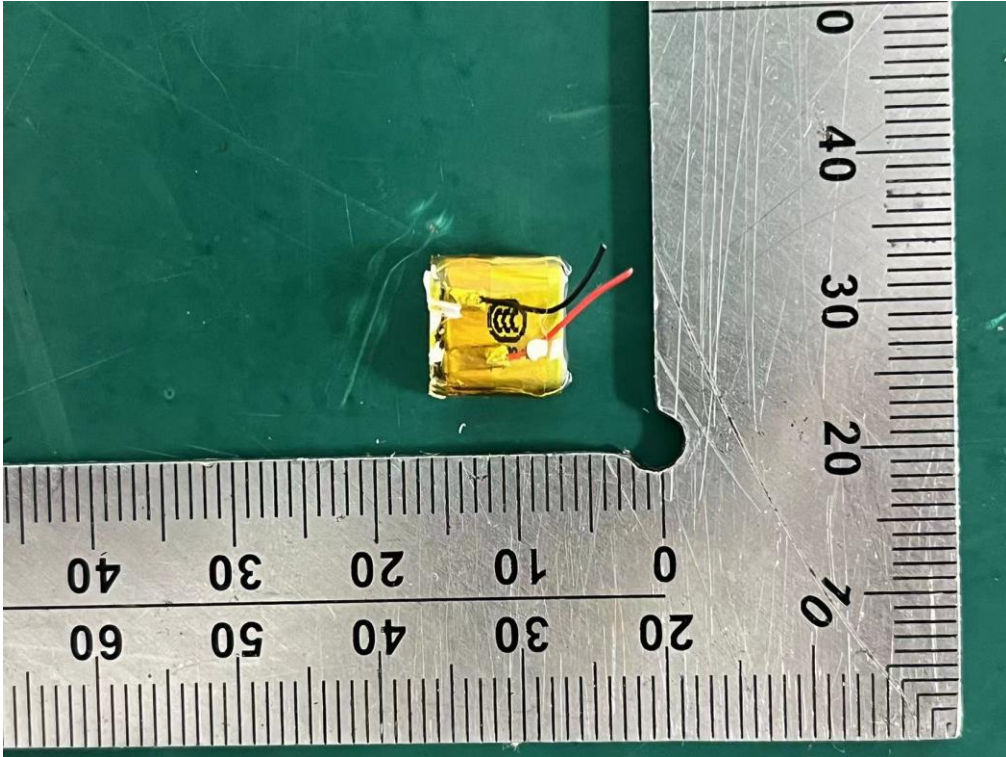
External Photos
M/N: EDF280041



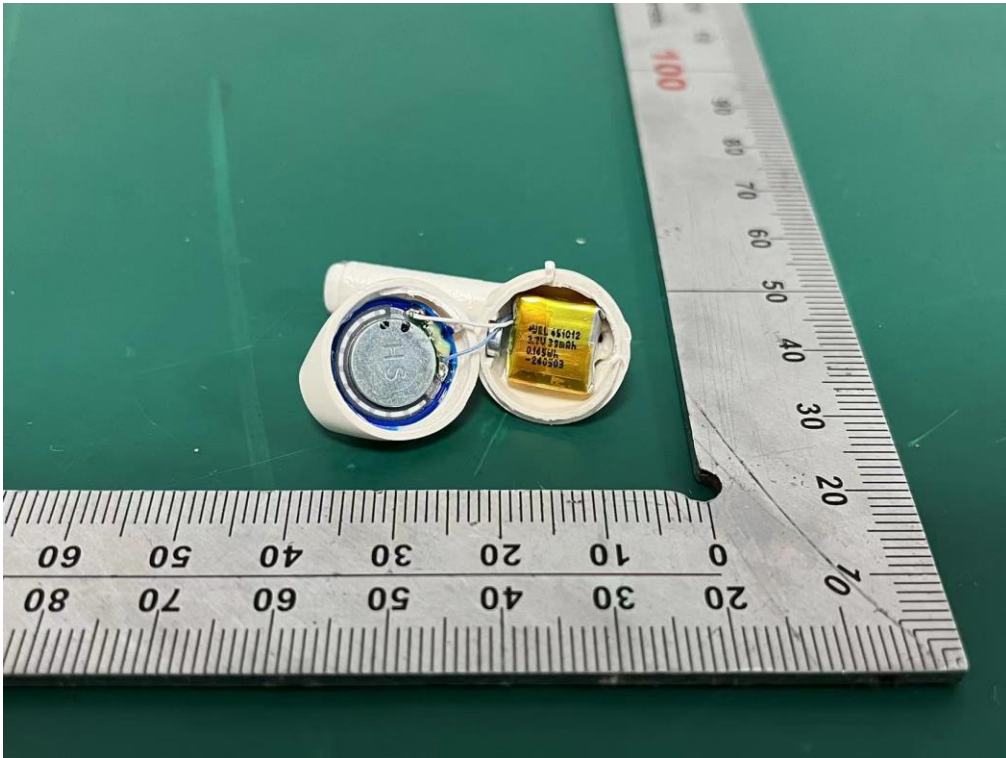
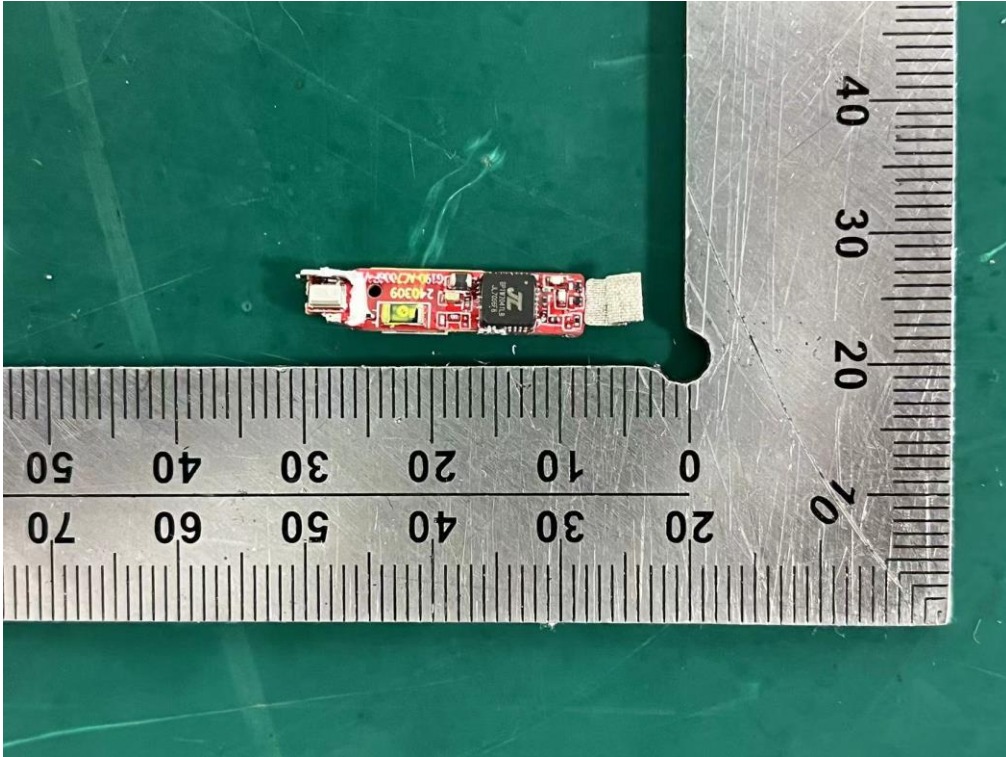
Internal Photos
M/N: EDF280041



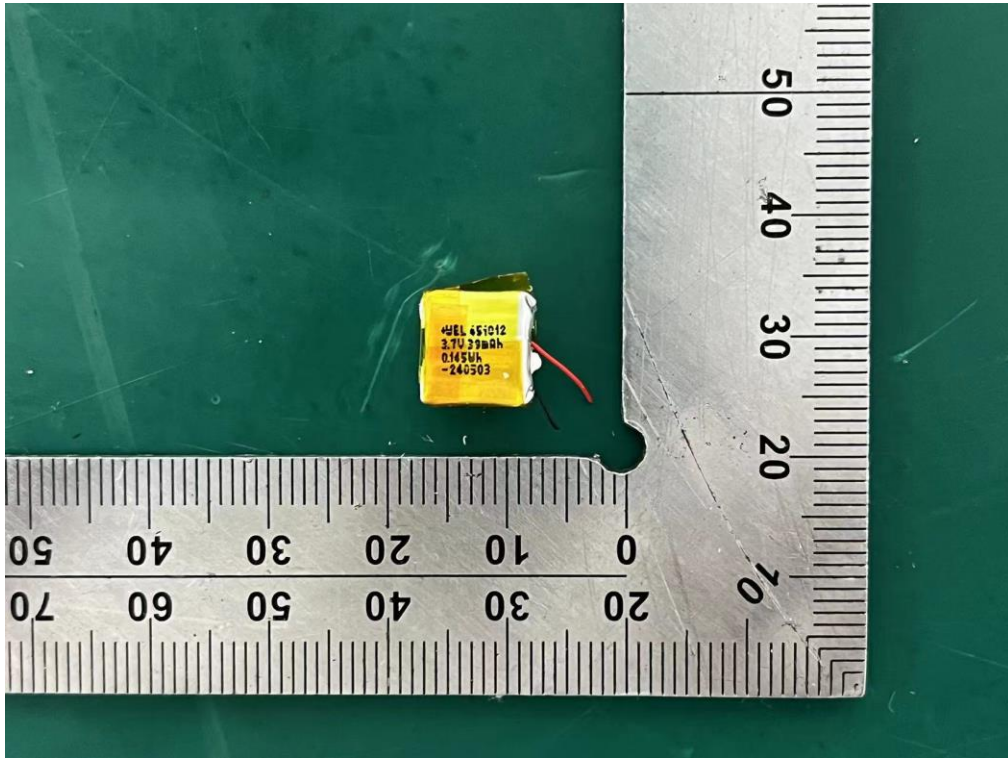
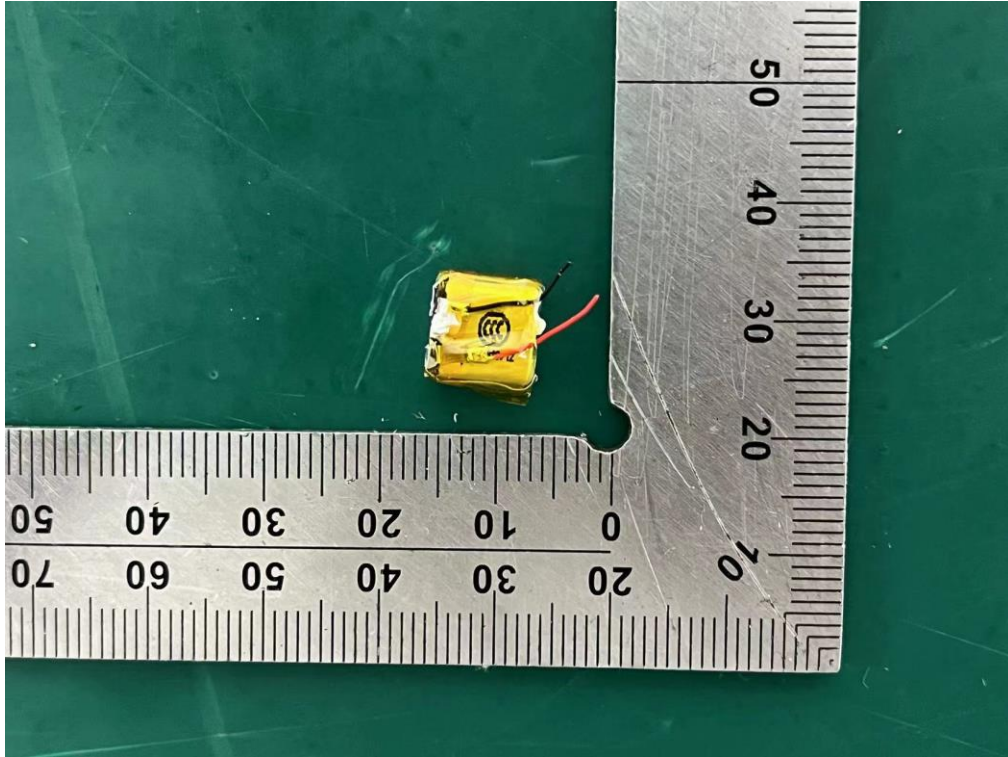
Internal Photos
M/N: EDF280041



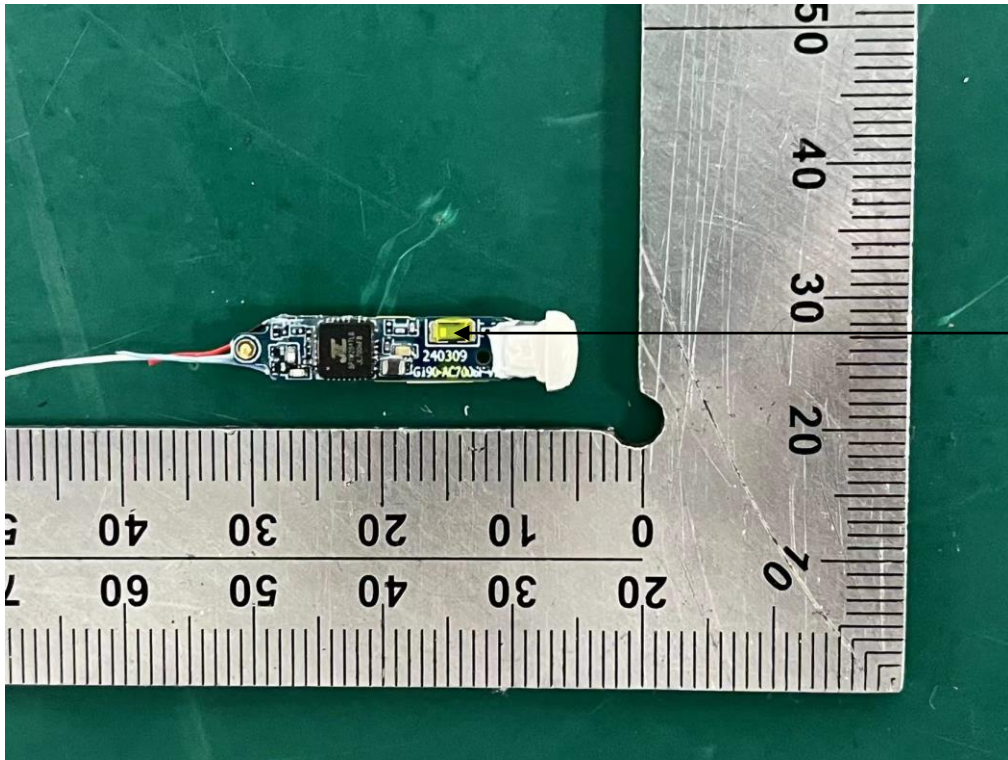
Internal Photos
M/N: EDF280041



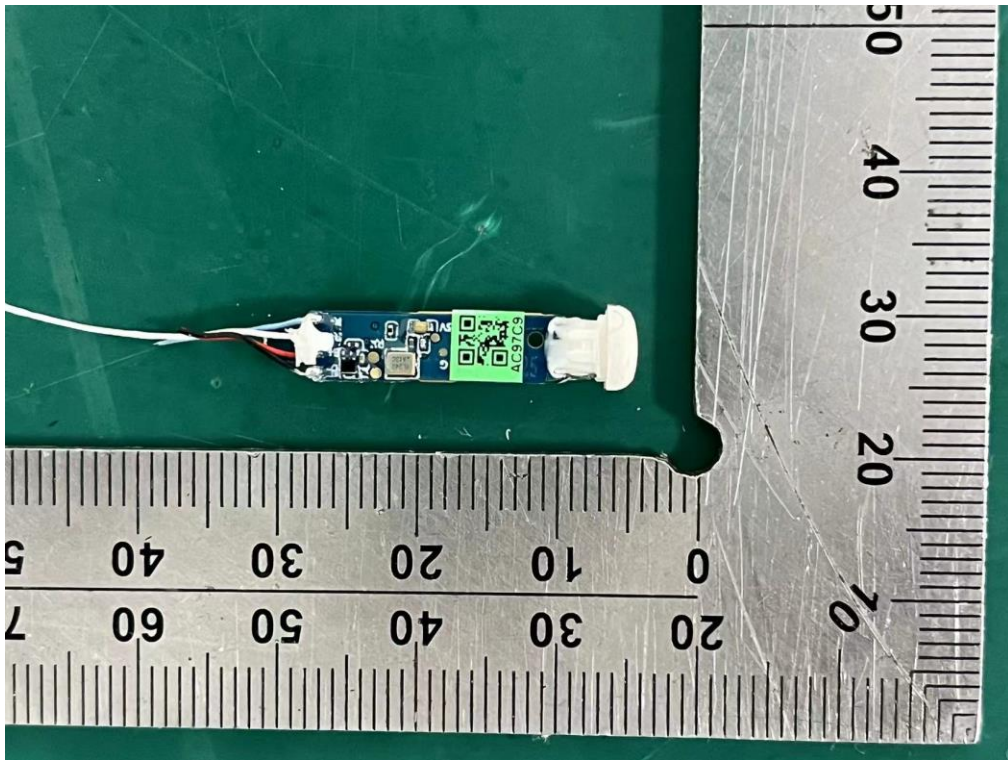
Internal Photos
M/N: EDF280041



Internal Photos
M/N: EDF280041



Bluetooth
Antenna



End of Test Report