

天线规格书

Antenna part specification

产品名称 Product Name: PCB 蓝牙天线

产品型号 Model number: MR3

品牌 Brand: EDIFIER

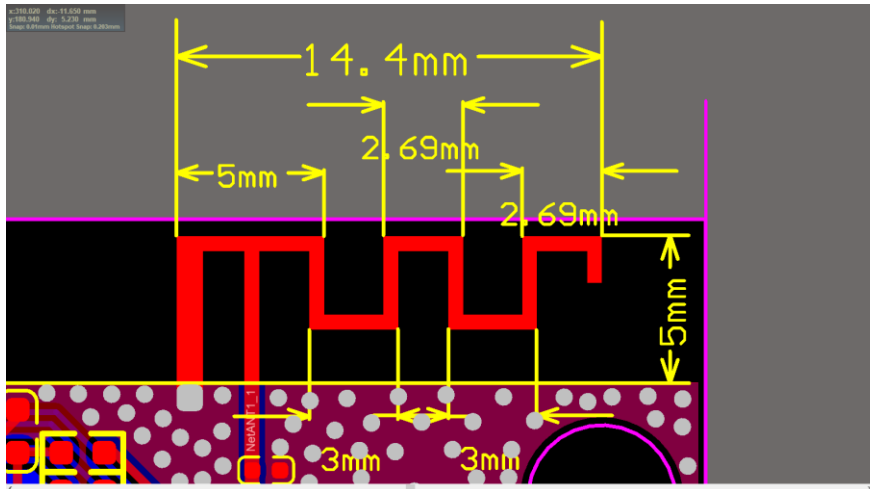
频率范围 Frequency: 2400MHz-2483.5MHz

最大天线增益 Gain(Max.): 2.59dBi

Manufacturer: Dongguan Edifier Technology Co., Ltd.

Address: No.2 Gongyedong Road, Songshan Lake Sci&Tech Industry
Park, Dongguan,Guangdong 523808, PR.China

天线照片:

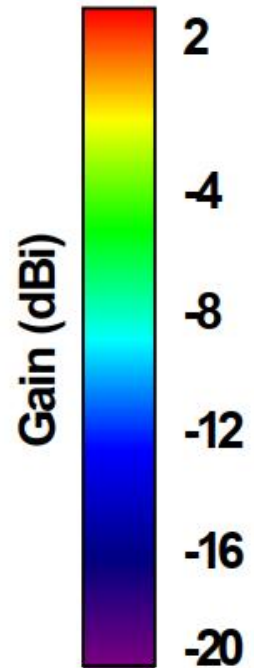
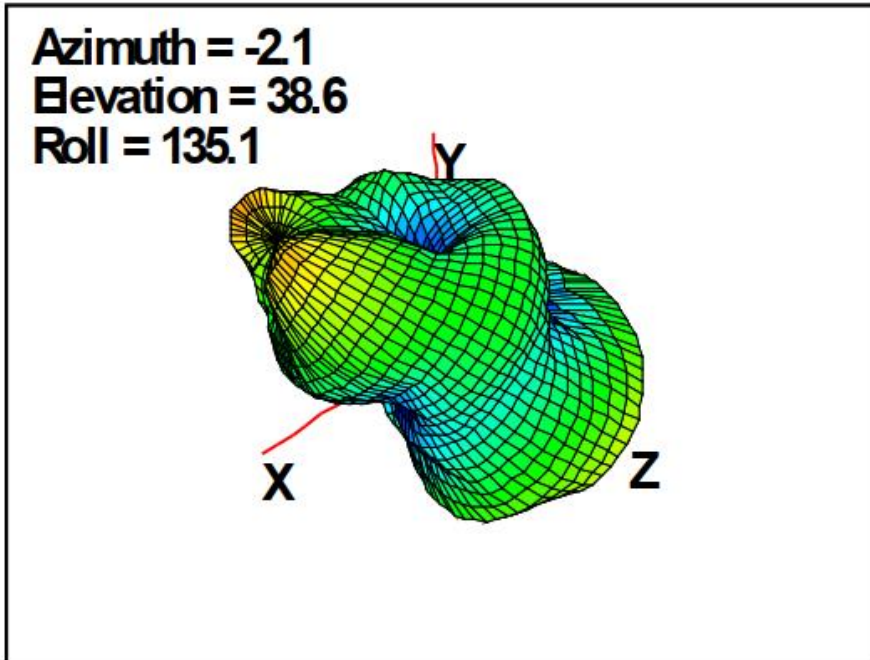


天线效率和增益:

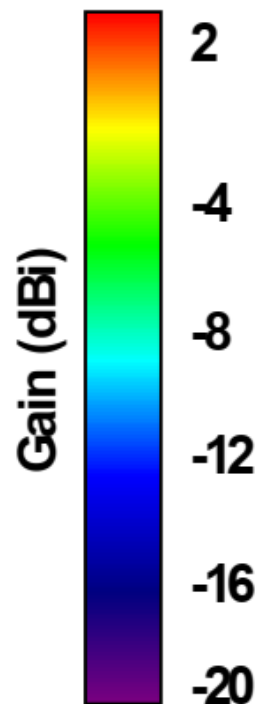
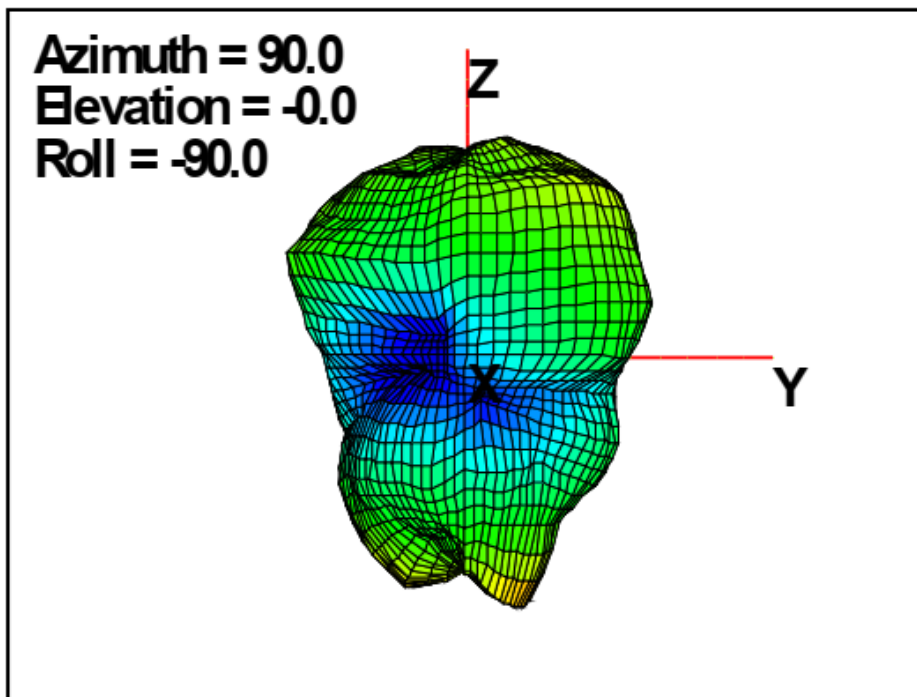
Antenna efficiency and gain

	Frequency (MHz)	Efficiency (%)	Gain (dBi)
2.4G	2400	24.48	0.17
	2405	27.99	0.84
	2410	28.32	0.71
	2415	31.04	1.29
	2420	29.42	0.71
	2425	29.51	0.98
	2430	27.33	0.76
	2435	28.23	0.65
	2440	27.68	0.98
	2445	29.84	1.02
	2450	31.62	1.59
	2455	34.93	1.82
	2460	35.83	1.96
	2465	37.64	2.44
	2470	37.78	1.98
	2475	37.79	2.59
	2480	37.17	1.89
	2485	39.16	2.68
2490	40.87	2.33	
2495	42.33	2.90	
2500	44.52	2.78	

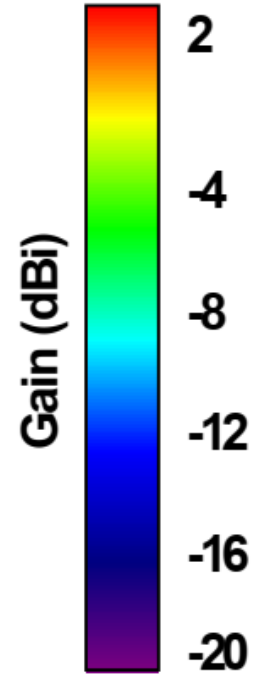
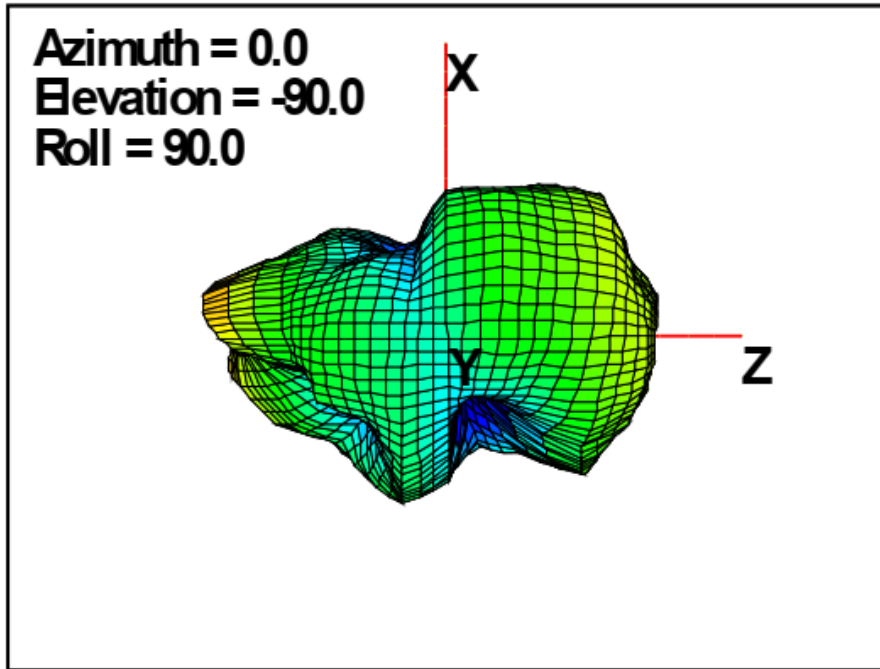
Total



Total



Total



Total

