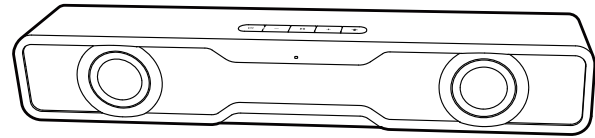


QS30 Multimedia Speaker



— Quick Start Guide —



Manual Edition 1.0, January 2024
IB-200-XXXXXX-XX

For more information, please visit our website:

www.edifier.com



@Edifierglobal @Edifier_Global @Edifier_Global

EDIFIER ConneX app



Model: EDF286008
FCC ID: Z9G-EDF231
IC: 10004A-EDF231

Edifier International Limited
P.O. Box 6264
General Post Office
Hong Kong

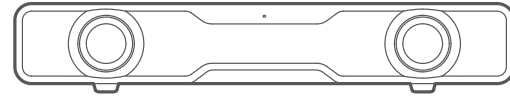
Tel: +852 2522 6989
Fax: +852 2522 1989

www.edifier.com
© 2024 Edifier International Limited. All rights reserved.
Printed in China

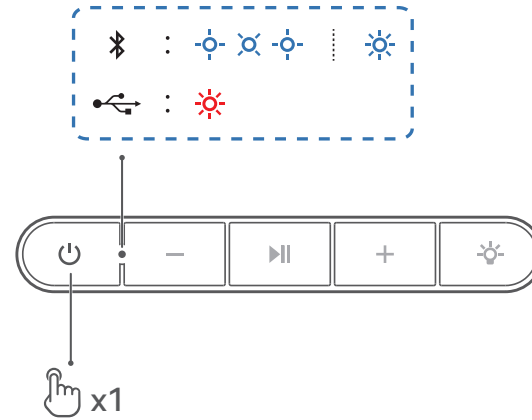
NOTICE:
For the need of technical improvement and system upgrade, information contained herein may be subject to change from time to time without prior notice.
Products of EDIFIER will be customized for different applications. Pictures and illustrations shown on this manual may be slightly different from actual product. If any difference is found, the actual product prevails.



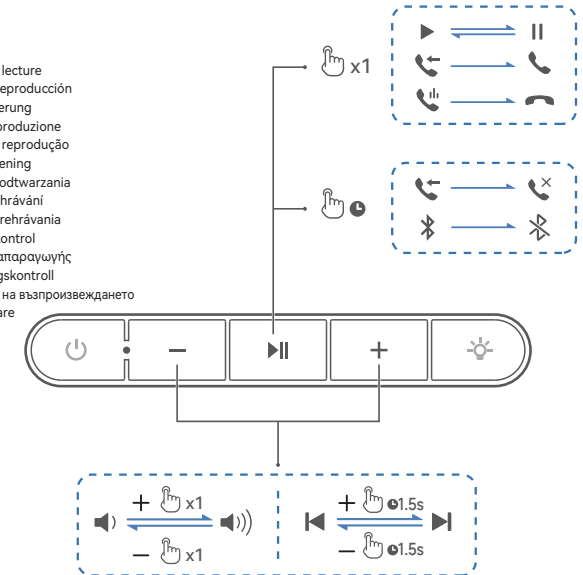
- EN What's in the box?
- FR Contenu de la boîte
- ES Contenido de la caja
- DE Lieferumfang
- IT Contenuto della confezione
- PT Conteúdo da caixa
- NL Wat zit er in de doos?
- PL Zawartość pudełka
- CZ Co je v krabičce?
- SK Čo je v krabičci?
- DK Kassens indhold
- GR Τι υπάρχει στο κουτί?
- SV Vad finns i boxen?
- BG Какво има в кутията?
- RO Ce se află în cutie?



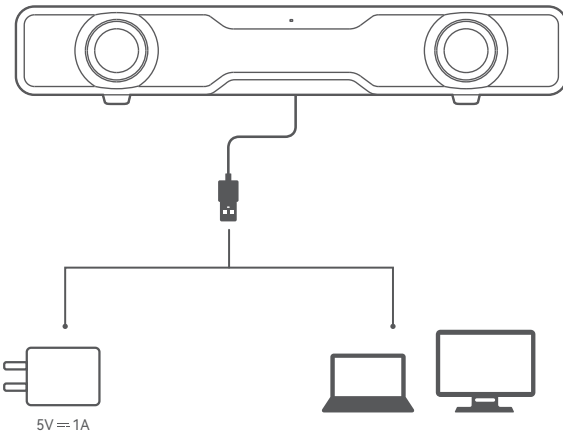
- EN Source selection
- FR Sélection de la source
- ES Selección de fuente
- DE Quellenauswahl
- IT Selezione sorgente
- PT Seleção de fonte
- NL Bron selectie
- PL Wybór źródła
- CZ Výběr zdroje
- SK Výber zdroja
- DK Kildevalg
- GR Επιλογή πηγής
- SV Källval
- BG Избор на източник
- RO Selectare sursă



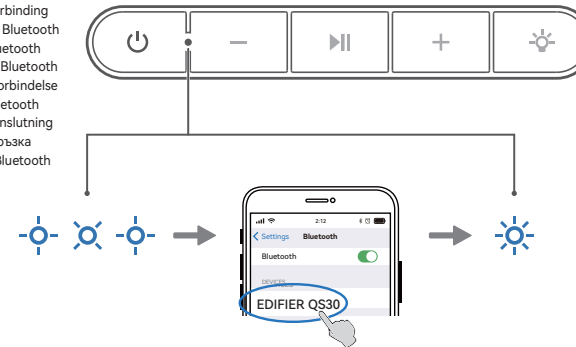
- EN Play control
- FR Contrôle de lecture
- ES Control de reproducción
- DE Abspielsteuerung
- IT Controllo riproduzione
- PT Controle de reprodução
- NL Afspelerbediening
- PL Sterowanie odtwarzania
- CZ Ovladač přehrávání
- SK Ovládanie prehrávania
- DK Afspilningskontrol
- GR Έλεγχος αναπαραγωγής
- SV Uppspelningskontroll
- BG Управление на възпроизвеждането
- RO Control redare



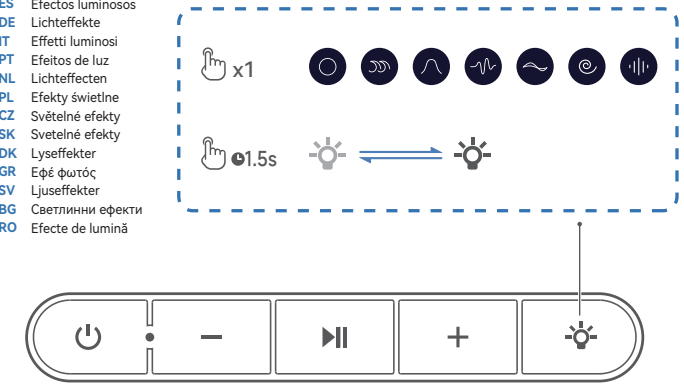
- EN Cable connection
- FR Connexion par câble
- ES Conexión de cable
- DE Kabelverbindung
- IT Collegamento cavo
- PT Conexão via cabo
- NL Kabelverbinding
- PL Złącze kablowe
- CZ Připojení kabelu
- SK Káblové pripojenie
- DK Kabeltilslutning
- GR Σύνδεση καλωδίου
- SV Kabelanslutning
- BG Кабелна връзка
- RO Conexiune cablu



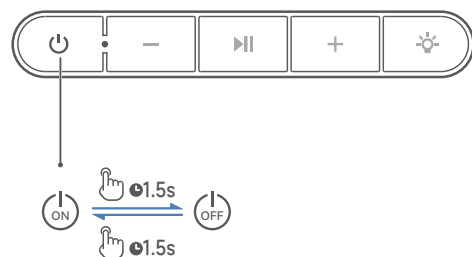
- EN Bluetooth connection
- FR Connexion Bluetooth
- ES Conexión Bluetooth
- DE Bluetooth-Kopplung
- IT Connessione Bluetooth
- PT Ligação Bluetooth
- NL Bluetoothverbinding
- PL Podłączenie Bluetooth
- CZ Připojení Bluetooth
- SK Pripojenie k Bluetooth
- DK Bluetooth-forbindelse
- GR Σύνδεση Bluetooth
- SV Bluetooth-anslutning
- BG Bluetooth връзка
- RO Conexiune Bluetooth



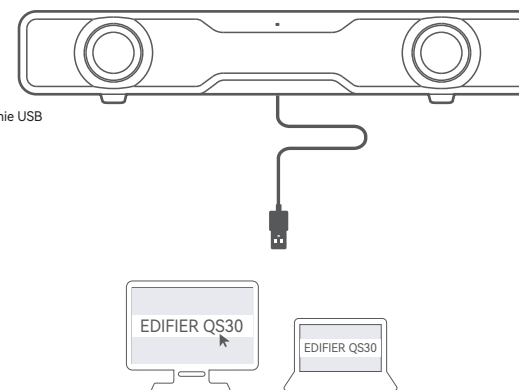
- EN Light effects
- FR Effets lumineux
- ES Efectos luminosos
- DE Lichteffekte
- IT Effetti luminosi
- PT Efeitos de luz
- NL Lichteffecten
- PL Efekty świetlne
- CZ Světelné efekty
- SK Svetelné efekty
- DK Lyseffekter
- GR Εφέ φωτός
- SV Ljuseffekter
- BG Светлини ефекти
- RO Efecte de lumină



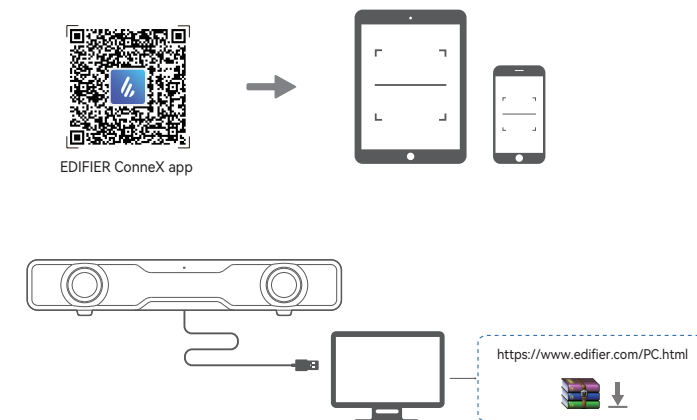
- EN Power on/off
- FR Allumer/éteindre
- ES Encendido/apagado
- DE Einschalten/Ausschalten
- IT Accensione/spegnimento
- PT Ligar/desligar
- NL Aan/uit zetten
- PL Włączanie/wyłączanie zasilania
- CZ Zapnutí/vypnutí
- SK Zapnutie/vypnutie
- DK Tænd/sluk
- GR Ενεργοποίηση/απενεργοποίηση
- SV Strömmen på/av
- BG Включване/изключване на захранването
- RO Pornire/oprire



- EN USB connection
- FR Connexion USB
- ES Conexión USB
- DE USB-Anschluss
- IT Collegamento USB
- PT Conexão USB
- NL USB-aansluiting
- PL Złącze USB
- CZ Připojení USB
- SK Pripojenie cez rozhranie USB
- DK USB-tilslutning
- GR Σύνδεση USB
- SV USB-anslutning
- BG Връзка USB
- RO Conexiune USB



- EN app
- FR app
- ES app
- DE app
- IT app
- PT app
- NL app
- PL app
- CZ app
- SK app
- DK app
- GR app
- SV app
- BG app
- RO app

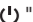


EN Peak output power: 10W
Total output power (RMS): 2.5W + 2.5W
Frequency response: 90Hz-17kHz




EN Note:
• Images are for illustrative purposes only and may differ from the actual product.
• For the need of technical improvement and system upgrade, information and specifications contained herein may be slightly different from actual product. If any difference is found, the actual product prevails.



EN
Press and hold the "  " button to power on/off the product.



EN Note:
1. Pin code for connection is "0000" if needed.
2. To enjoy all Bluetooth functions of this product, make sure that your audio source device supports A2DP and AVRCP profiles.
3. If no device is connected in 30 minutes, the speaker will switch to Bluetooth hidden mode. The blue indicator will be in a breathing pattern. In this mode, (1) new devices cannot find the speaker, but (2) for a device that exists in the pairing record of this speaker, you can select "EDIFIER QS30" from its Bluetooth device list to reconnect. To exit from Bluetooth hidden mode, press the "  " button on the speaker.



EN Note:
• The following operating systems support USB audio streaming: Windows 11, Windows 10, Windows 8, and Windows 7.
• In USB mode, volume sync is not supported. To adjust the volume, adjust on the speaker and your device separately.



EN
EDIFIER ConneX mobile app
1. With your smart device, scan the QR code on the quick start guide or the packaging.
• You can also search for "EDIFIER ConneX" in Apple App Store (iOS devices) or Google Play (Android devices).
2. Download and install the app.
3. Connect your smart device with the speaker via Bluetooth.
4. In Bluetooth mode, open EDIFIER ConneX App on your smart device.
5. Tap the menu for settings and playback control.
Note: BLE connection between your smart device and the speaker keeps alive if the speaker is switched to other input modes than Bluetooth mode.

EDIFIER ConneX HD Computer Application
1. Access the link below to open the download page.
<https://www.edifier.com/PC.html>
2. Download and install the application on your computer.
Note: The following operating systems support: Windows 11, Windows 10, and MacOS 10.15 or later versions.

EN To learn more about EDIFIER, please visit www.edifier.com
For EDIFIER warranty queries, please visit the relevant country page on www.edifier.com and review the section titled Warranty Terms.
USA and Canada: service@edifier.ca
South America: Please visit www.edifier.com (English) or www.edifierla.com (Spanish/Portuguese) for local contact information.
FR Pour en savoir plus sur EDIFIER, visitez www.edifier.com
Pour des demandes relatives à la garantie d'EDIFIER, visitez la page pour votre pays sur www.edifier.com et lisez la section intitulée Modalités de garantie.
États-Unis et Canada: service@edifier.ca
Amérique du Sud: Visitez www.edifier.com (anglais) ou www.edifierla.com (espagnol/portugais) pour les coordonnées locales.

ES Si quiere saber más sobre EDIFIER, visite www.edifier.com.
Para consultas sobre la garantía EDIFIER, por favor, seleccione la página del país correspondiente en www.edifier.com y revise la sección Condiciones de la garantía.
EE.UU. y Canadá: service@edifier.ca
América del Sur: por favor, visite www.edifier.com (inglés) o www.edifierla.com (español/portugués) para obtener información de contacto local.
DE Um mehr über EDIFIER zu erfahren, besuchen Sie bitte www.edifier.com
Bei Fragen zu Garantieleistungen unserer Produkte gehen Sie bitte auf die entsprechende Webseite Ihres Landes unter www.edifier.com und schauen Sie im Abschnitt Garantiebestimmungen nach.
IT Per sapere di più su EDIFIER, visitare il sito www.edifier.com
Per domande sulla garanzia EDIFIER, visitare la relativa pagina del paese sul sito www.edifier.com e consultare la sezione intitolata Condizioni di garanzia.
PT Para mais informações sobre a EDIFIER, consulte o site www.edifier.com
Para obter informações sobre a garantia da EDIFIER, aceda à página relevante do país em www.edifier.com e consulte a secção dos Termos da Garantia.
EUA e Canadá: service@edifier.ca
América do Sul: Visite o site www.edifier.com (Inglês) ou www.edifierla.com

(Espanhol/Português) para obter informações sobre o contacto local
NL Voor meer informatie over EDIFIER, bezoek www.edifier.com
Voor vragen betreffende de garantie, bezoekt u de pagina van het betreffende land op www.edifier.com en leest u de sectie Garantiebepalingen.
PL Więcej informacji na temat EDIFIER znajduje się na naszej stronie internetowej www.edifier.com
W przypadku pytań na temat gwarancji prosimy otworzyć właściwą zakładkę danego kraju na naszej stronie www.edifier.com i zapoznać się treścią Warunków Gwarancji.
CZ Více informací o společnosti EDIFIER naleznete na stránkách www.edifier.com
Informace o záruce na produkty EDIFIER naleznete na příslušných mutačních stránkách na www.edifier.com a v kapitole Podmínky záruky.
SK Viac informácií o EDIFIER, nájdete na www.edifier.com
Otázky týkajúce sa záruky EDIFIER nájdete na príslušnej stránke krajiny www.edifier.com a pozrite si časť nazvanú Podmienky záruky.
DK Besøg www.edifier.com for at lære mere om EDIFIER
For forespørgsler om EDIFIER garanti, besøg den relevante landeside på www.edifier.com og se afsnittet Garantibetingelser.
GR Για να μάθετε περισσότερα σχετικά με το EDIFIER, επισκεφθείτε τη διεύθυνση www.edifier.com
Για ερωτήσεις σχετικά με την εγγύηση του EDIFIER, επισκεφτείτε τη σελίδα της σχετικής χώρας στη διεύθυνση www.edifier.com και διαβάστε την ενότητα με τίτλο Όροι εγγύησης.
SV För att lära dig mer om EDIFIER, besök www.edifier.com
För EDIFIER garantifrågor, besök den relevanta sidan för ditt land på www.edifier.com och läs avsnittet med titeln Garantivillkor.
BG Ако искате да разберете повече за EDIFIER, моля, посетете нашия сайт: www.edifier.com
За запитвания относно гаранции на EDIFIER, моля, посетете съответната страница за държава на нашия сайт www.edifier.com и прегледайте раздела Условия за гаранция.

RO Pentru a afla mai multe despre EDIFIER, vă rugăm să accesați www.edifier.com
Pentru întrebări legate de garanția EDIFIER, vă rugăm să vizitați pagina țării respective pe www.edifier.com și să consultați secțiunea intitulată Condiții de garanție.

EU Declaration of Conformity can be found in:
<https://www.edifier.com/int/eu-doc.html>

EDIFIER®

FCC Regulatory Compliance

Warning: changes or modifications not expressly approved by the party responsible for compliance could void the user's authority to operate the equipment.

Note: This equipment has been tested and found to comply with the limits for a Class B digital device, pursuant to Part 15 of the FCC Rules. These limits are designed to provide reasonable protection against harmful interference in a residential installation. This equipment generates, uses and can radiate radio frequency energy and, if not installed and used in accordance with the instructions, may cause harmful interference to radio communications. However, there is no guarantee that interference will not occur in a particular installation.

If this equipment does cause harmful interference to radio or television reception, which can be determined by turning the equipment off and on, the user is encouraged to try to correct the interference by one or more of the following measures:

- Reorient or relocate the receiving antenna.
- Increase the separation between the equipment and receiver.
- Connect the equipment into an outlet on a circuit different from that to which the receiver is connected.
- Consult the dealer or an experienced radio/TV technician for help.

RF Exposure Compliance

This equipment complies with FCC radiation exposure limits set forth for an uncontrolled environment. This equipment should be installed and operated with minimum distance 20cm between the radiator and your body. This transmitter must not be co-located or operating in conjunction with any other antenna or transmitter.

ISED Regulatory compliance

This device contains licence-exempt transmitters that comply with Innovation, Science and Economic Development Canada's licence-exempt RSS(s).

Operation is subject to the following two conditions:

This device may not cause interference.

This device must accept any interference, including interference that may cause undesired operation of the device.

L'émetteur exempt de licence contenu dans le présent appareil est conforme aux CNR d'Innovation, Sciences et Développement économique Canada applicables aux appareils radio exempts de licence. L'exploitation est autorisée aux deux conditions suivantes :

L'appareil ne doit pas produire de brouillage;

L'appareil doit accepter tout brouillage radioélectrique subi, même si le brouillage est susceptible d'en compromettre le fonctionnement.

This equipment complies with IC RSS-102 radiation exposure limits set forth for an uncontrolled environment. This equipment should be installed and operated with minimum distance 20cm between the radiator and your body.

Cet équipement est conforme aux limites d'exposition aux radiations IC CNR-102 établies pour un environnement non contrôlé. Cet équipement doit être installé et utilisé avec une distance minimale de 20 cm entre le radiateur et votre corps.

IB-200-000000-13

名称:	说明书FCC ISED认证说明-音箱	东莞市漫步者科技有限公司
材质:	80g书纸	版面设计:
尺寸:	125×120 (MM)	校对:
版本号及料号:	V1.3/IB-200-000000-13	批准:

FCC statement:
This device complies with Part 15 of the FCC Rules. Operation is subject to the following two conditions: (1) this device may not cause harmful interference, and (2) this device must accept any interference received, including interference that may cause undesired operation.
IC statement: CAN ICES-003(B)/NMB-003(B).

FCC IC警告语
贴产品