

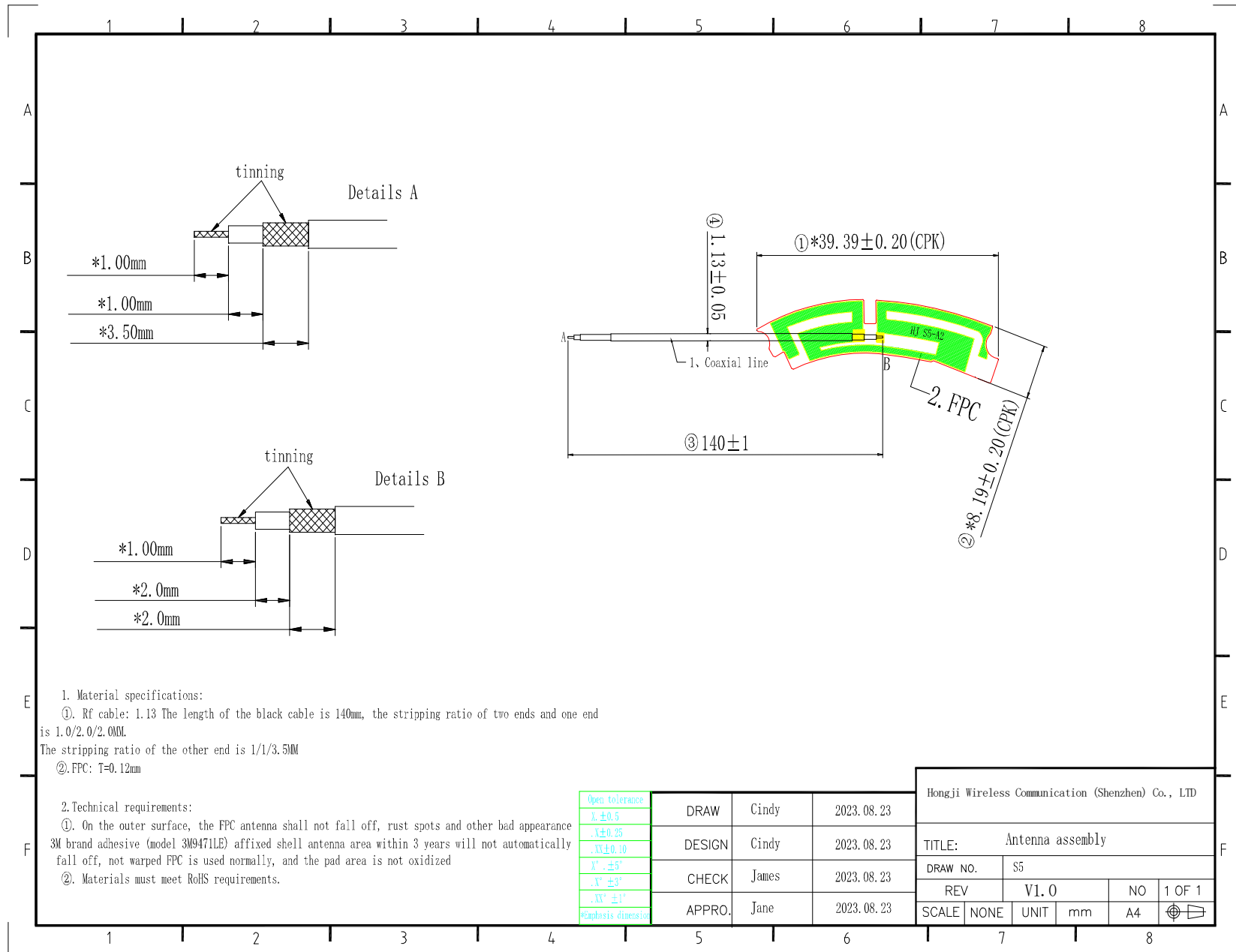
catalogue

- 一、 Prepare/revise the resume
- 二、 Product drawing
- 三、 Electrical and mechanical properties

一、Prepare/revise the resume

editi on	Revision page	Change time	Alteratio n party	Reason and content of change	remark
A0	—	2023/8/23	Cindy	Initial release	A0
A1					
A2					
A3					
A4					
A5					
A6					

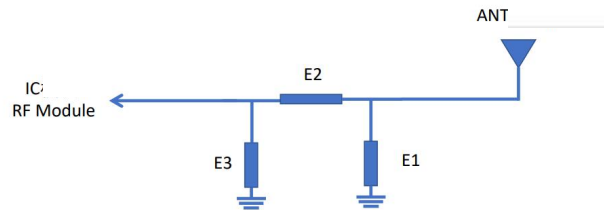
二、Product drawing



三、Electrical and mechanical properties

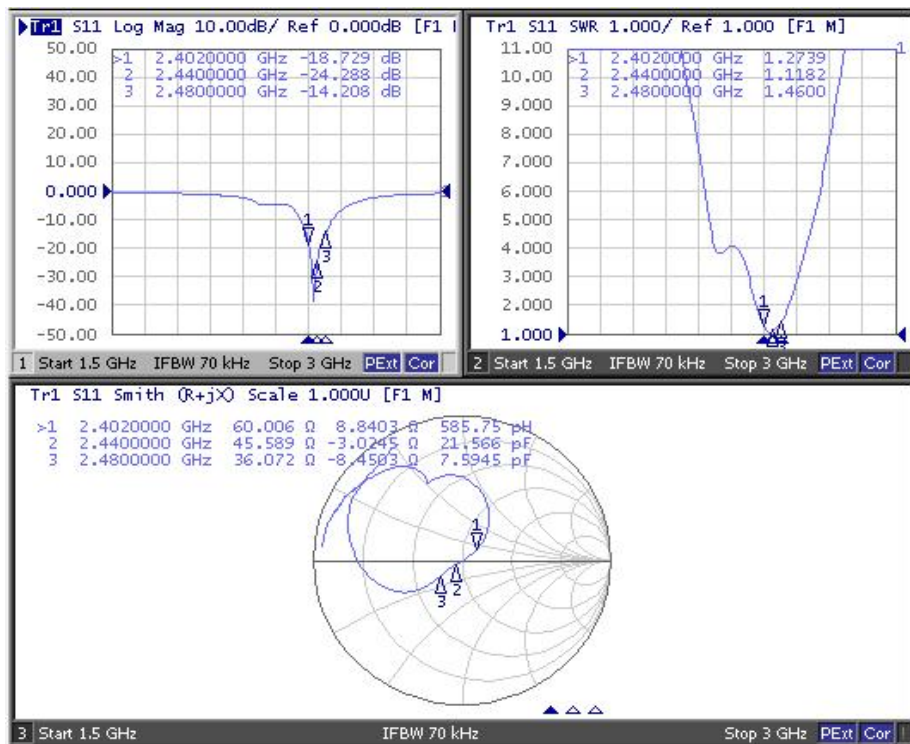
1、Match the circuit diagram

|Antenna circuit matching description



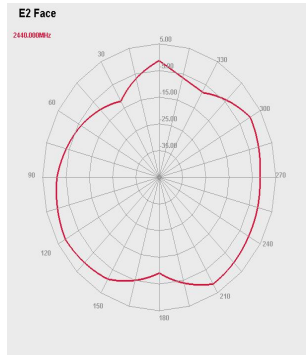
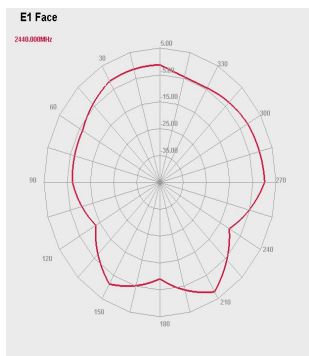
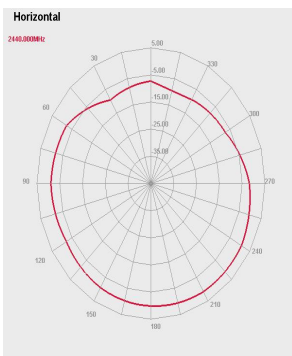
Element	Value
E1	N/C
E2	0Ω
E3	N/C

2、S11 argument



3、Passive efficiency (2D pattern)

Freq[MHz]	Efficiency(%)	Gain(dBi)
	Free space	Free space
2400	38.56	-0.45
2410	39.51	-0.49
2420	40.27	-0.53
2430	40.05	-0.52
2440	41.29	-0.48
2450	41.22	-0.59
2460	39.67	-0.53
2470	39.56	-0.48
2480	38.52	-0.71
2490	37.95	-0.87
2500	36.12	-0.85



4、 Active OTA data

	channel	TRP (dBm)	TIS (dBm)
Free space	0	8.2	-90.2
	39	8.5	-90.1
	78	8.3	-90.5
	channel	TRP (dBm)	TIS (dBm)
Head mold	0	7.1	-89.5
	39	7.4	-89.3
	78	7.4	-89.4