



# 样品规格书

## Antenna Part Specification

客户名称: Customer name:	漫步者 EDIFIER
项目名称: Project name:	Neobuds Pro 2
天线类型: Material category:	天线组件 Antenna assembly
版本: Version:	V1.0
日期: Date:	2023.07.06



# 目录

## Contents

一：无源测试报告 .....	3
I: The report of passive data .....	3
二：暗室有源测试数据 .....	9
II: 3D Active test report of antenna.....	9
三：匹配电路 .....	10
III: Matching circuit .....	10
四：结构图档 .....	11
IV: Structure file.....	11

变更记录栏 Change record			
编制/变更日期 Compile / change date	变更理由 Reason for change	变更内容 Changed content	版本 Version



一：无源测试报告

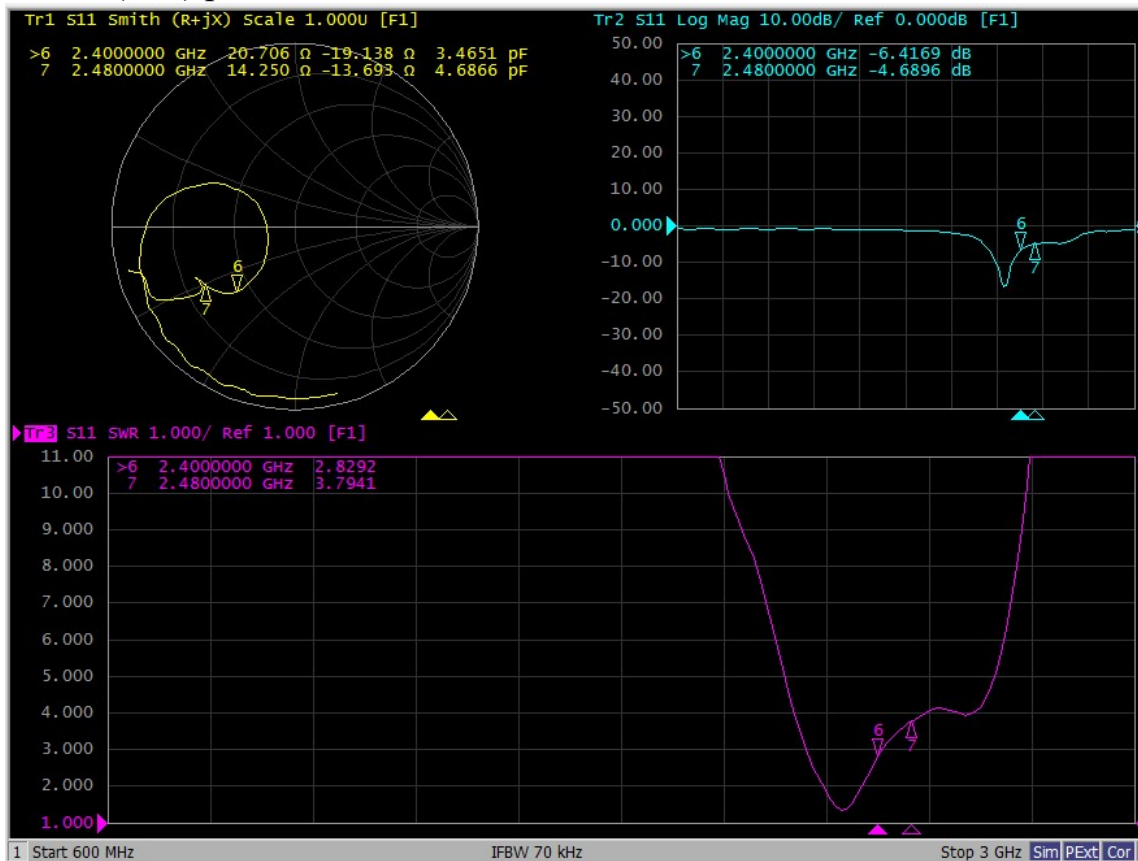
I: The report of passive data



Angilent E5071C

左耳天线 S 参数 (FS)

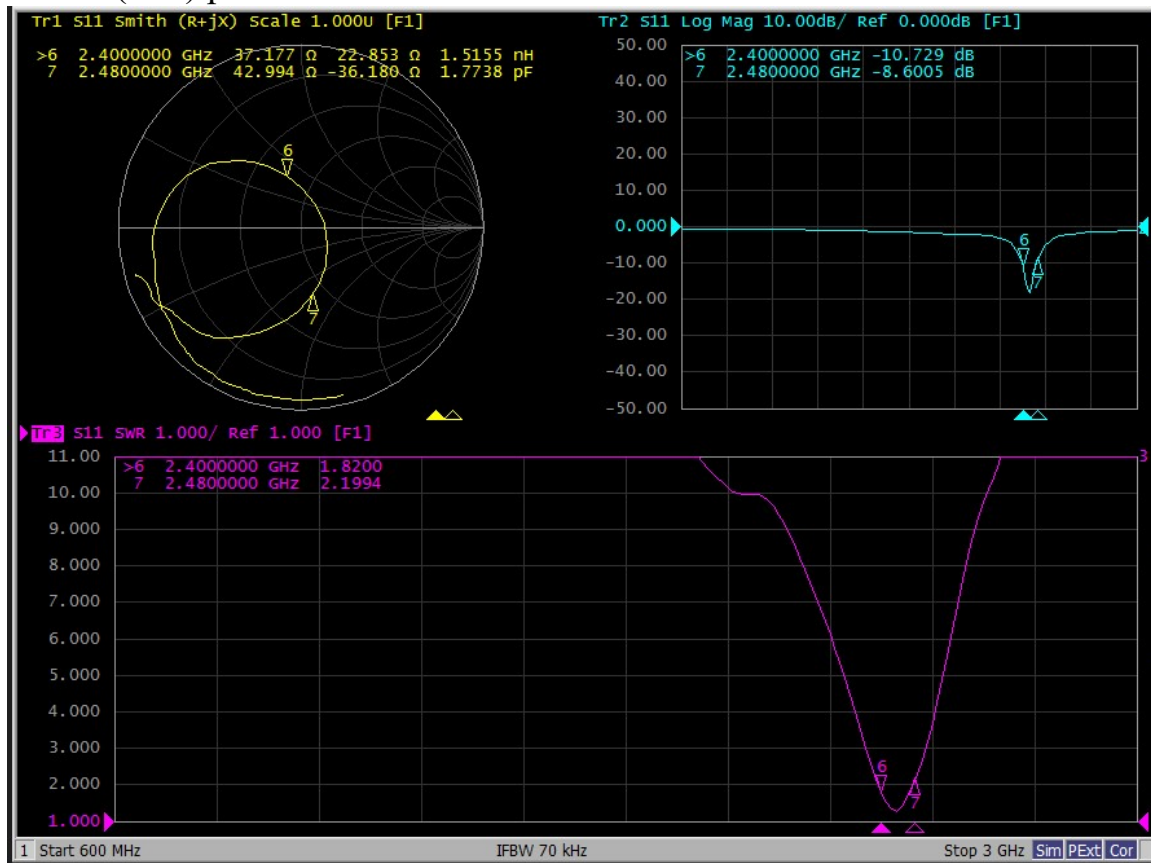
VSWR(S11) parameter (L) :





左耳天线 S 参数 (headform)

VSWR(S11) parameter (L) :



左耳天线效率和增益

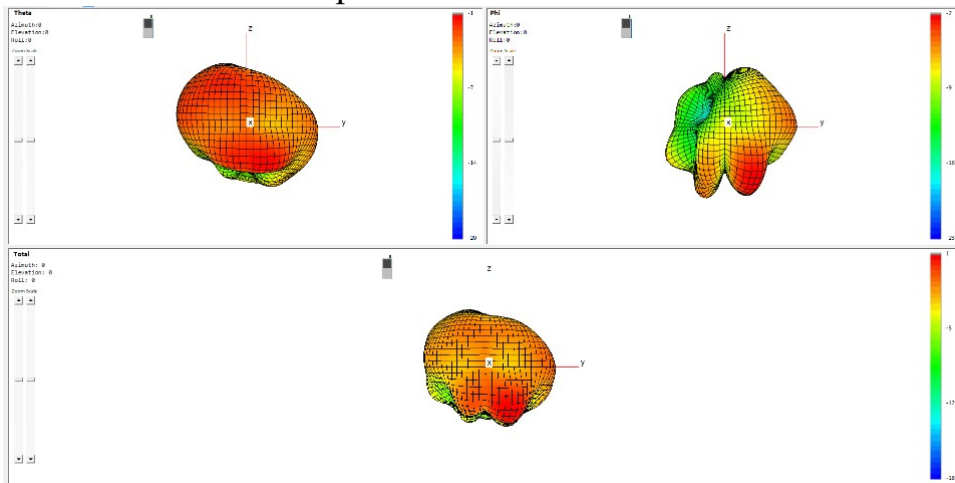
Efficiency:

2400-2480 MHz (L)			
Frequency (MHz)	Gain (dBi)	Efficiency (dB )	Efficiency
2400	0.9	-3.7	42.3
2410	0.7	-3.9	41.0
2420	0.7	-3.9	40.8
2430	0.4	-4.2	38.0
2440	0.1	-4.5	35.4
2450	0.1	-4.5	35.4
2460	0.1	-4.7	34.1
2470	0.5	-4.4	36.5
2480	0.7	-4.2	38.1
Average value	0.46	-4.22	37.96



左耳无源 3D 方向图

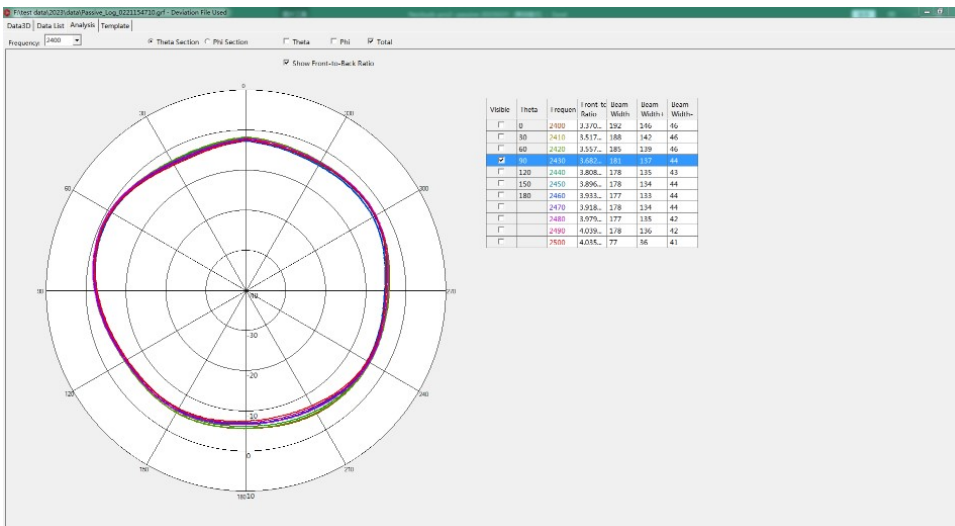
3D Antenna radiation pattern (L) :



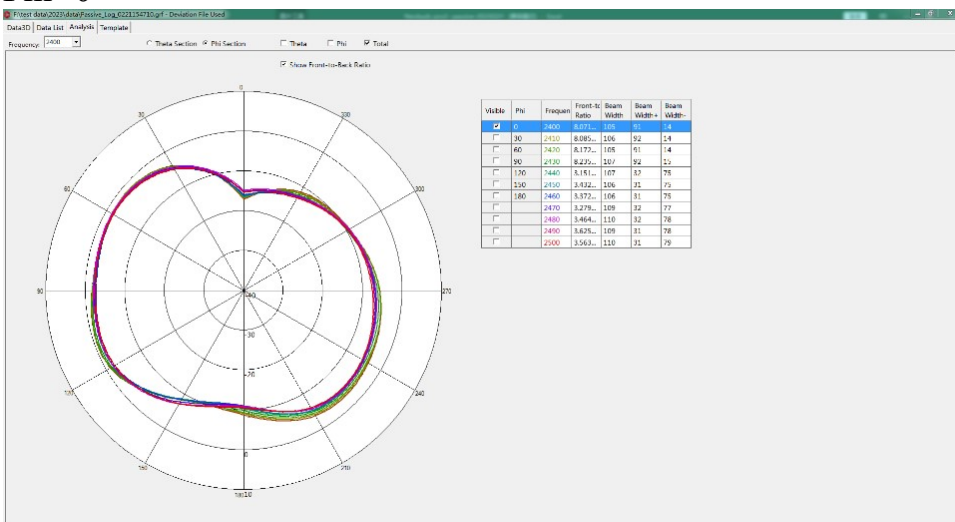
左耳无源 2D 方向图

2D Antenna radiation pattern (L) :

Theta=90°

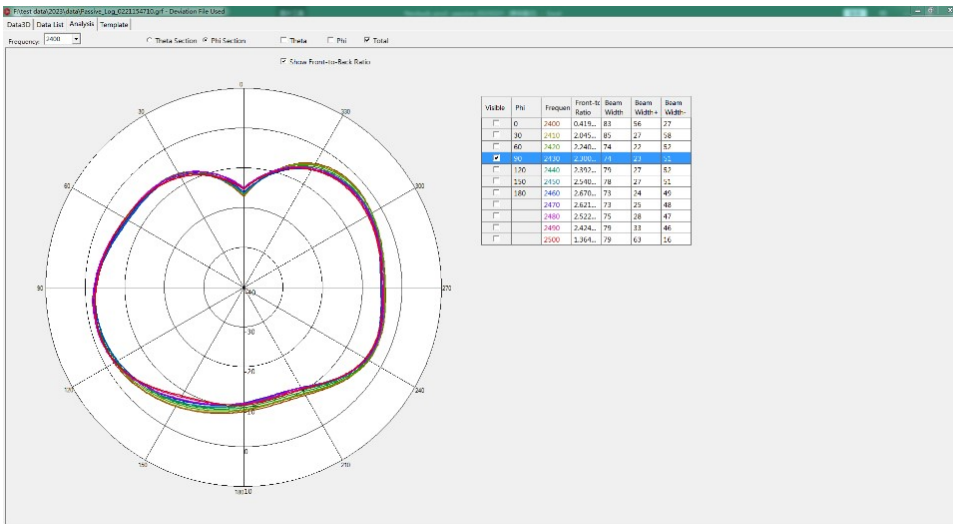


Phi=0°



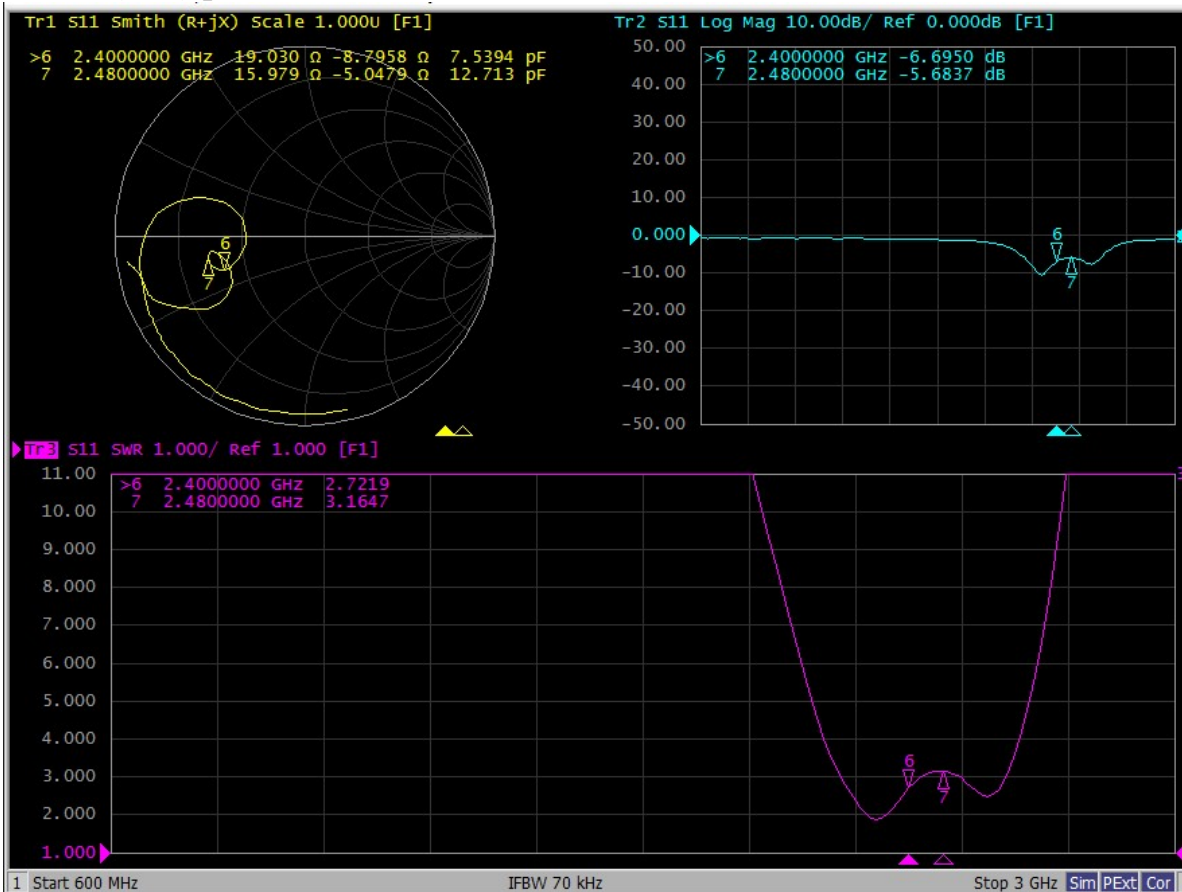


Phi=90°



右耳天线 S 参数 (FS)

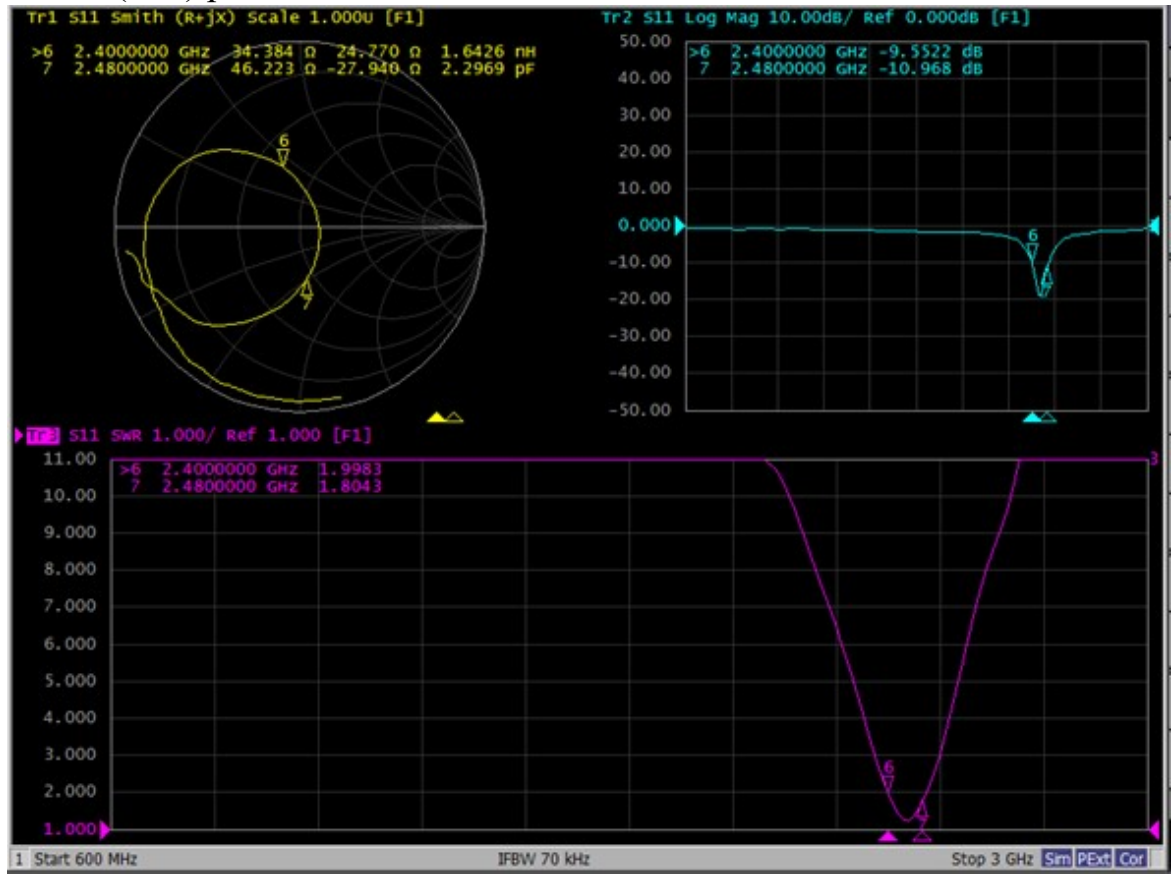
VSWSR(S11) parameter (R) :





右耳天线 S 参数 (headform)

VSWR(S11) parameter (R) :



右耳天线效率和增益

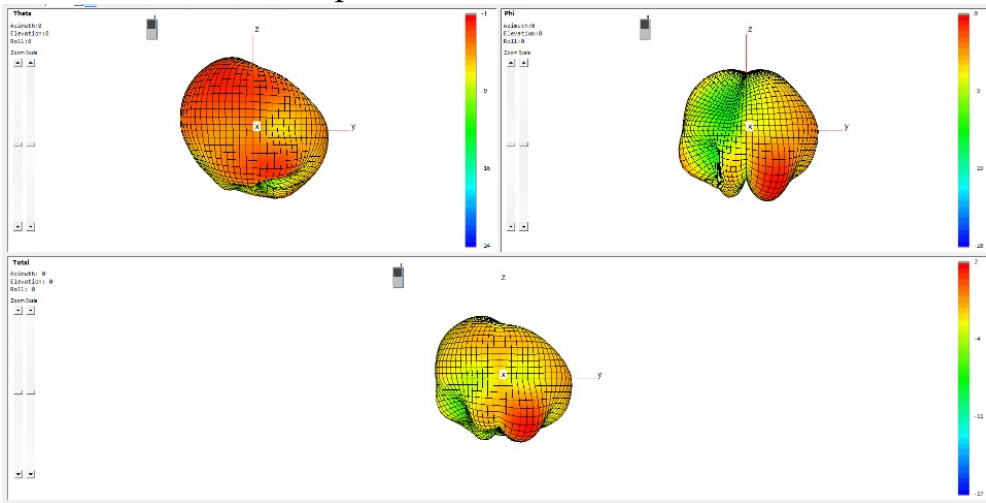
Efficiency:

2400-2480 MHz (R)			
Frequency (MHz)	Gain (dBi)	Efficiency (dB )	Efficiency
2400	1.3	-4.0	40.2
2410	1.3	-4.0	39.9
2420	1.3	-3.9	40.5
2430	1.1	-4.2	38.4
2440	0.9	-4.4	36.2
2450	1.0	-4.3	36.8
2460	1.0	-4.4	36.0
2470	1.0	-4.4	36.1
2480	0.8	-4.5	35.5
Average value	1.07	-4.24	37.73



右耳无源 3D 方向图

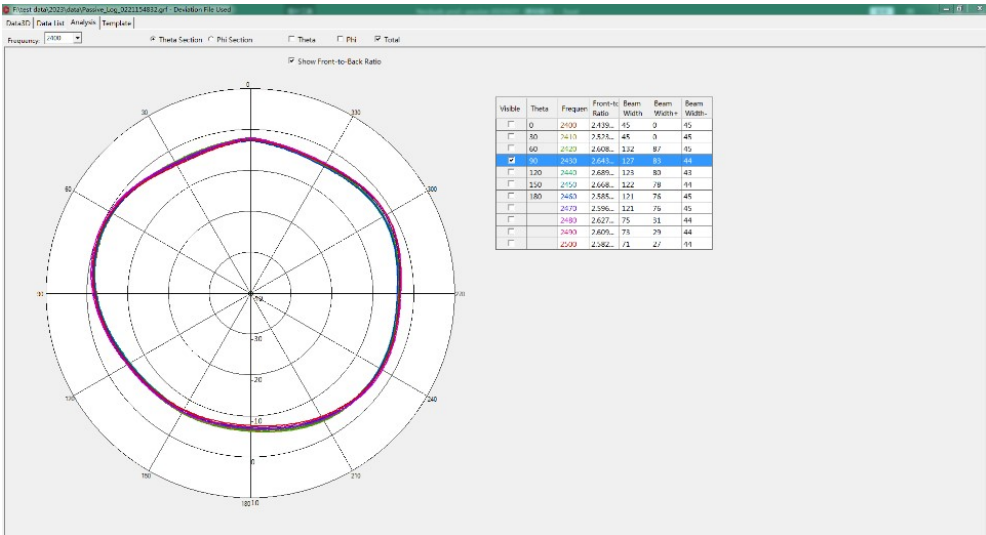
3D Antenna radiation pattern (R) :



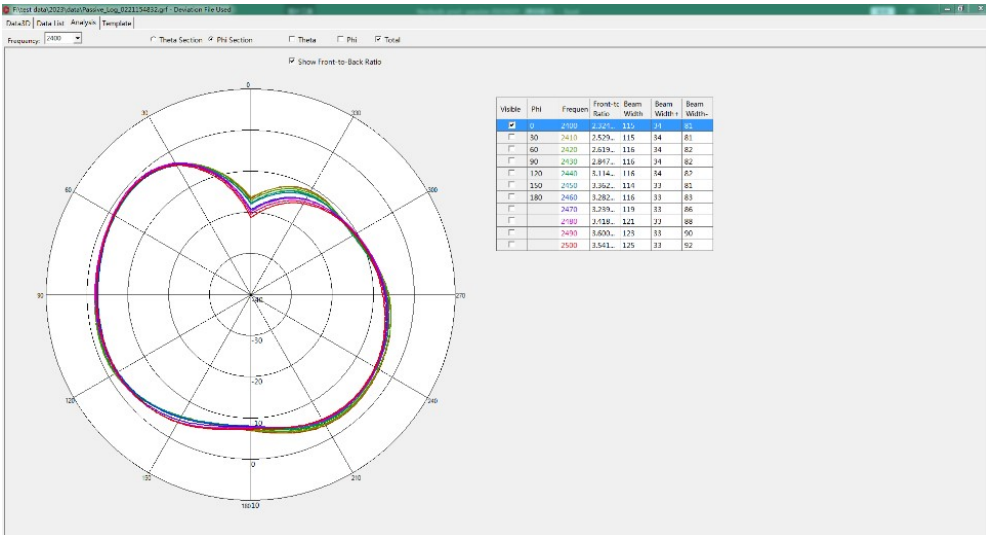
右耳无源 2D 方向图

2D Antenna radiation pattern (R) :

Theta=90°



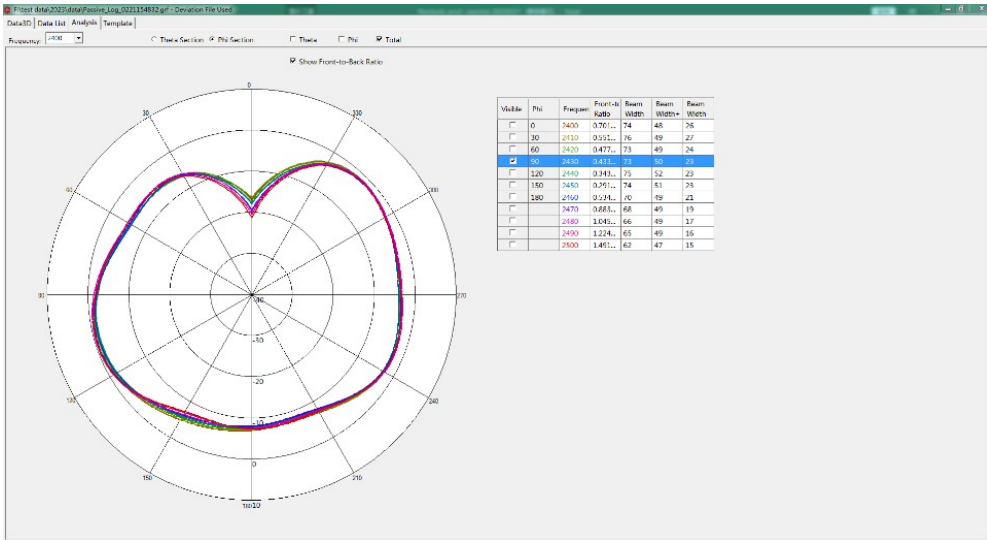
Phi=0°







Phi=90°



## 二：暗室有源测试数据

### II: 3D Active test report of antenna

FS	Channel	TRP (dBm)	TIS (dBm)
L	CH 0	12.0	-92.9
	CH 39	10.4	-92.6
	CH 78	9.2	-91.7

FS	Channel	TRP (dBm)	TIS (dBm)
R	CH 0	12.4	-93.0
	CH 39	11.2	-92.6
	CH 78	9.3	-91.5

headform	Channel	TRP (dBm)	TIS (dBm)
L	CH 0	3.1	-84.2
	CH 39	4.0	-85.6
	CH 78	1.7	-84.0

headform	Channel	TRP (dBm)	TIS (dBm)
R	CH 0	2.0	-83.5
	CH 39	5.2	-86.2
	CH 78	3.2	-84.8



OTA Standard Chamber



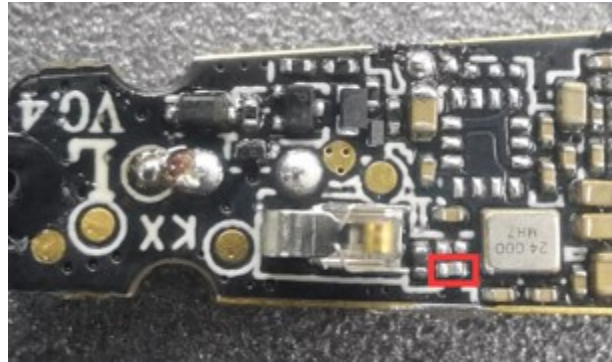
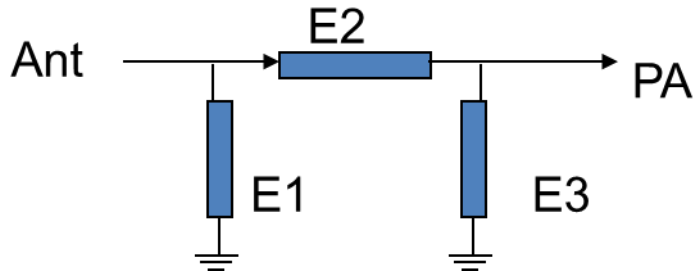
三：匹配电路

III: Matching circuit

左耳匹配电路

L-matching circuit

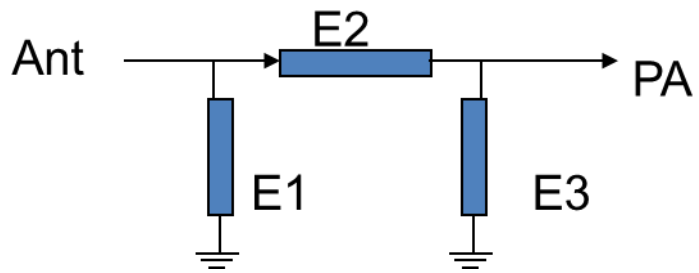
Element	Value
E1	1.5pF
E2	0Ω
E3	N/A



右耳匹配电路

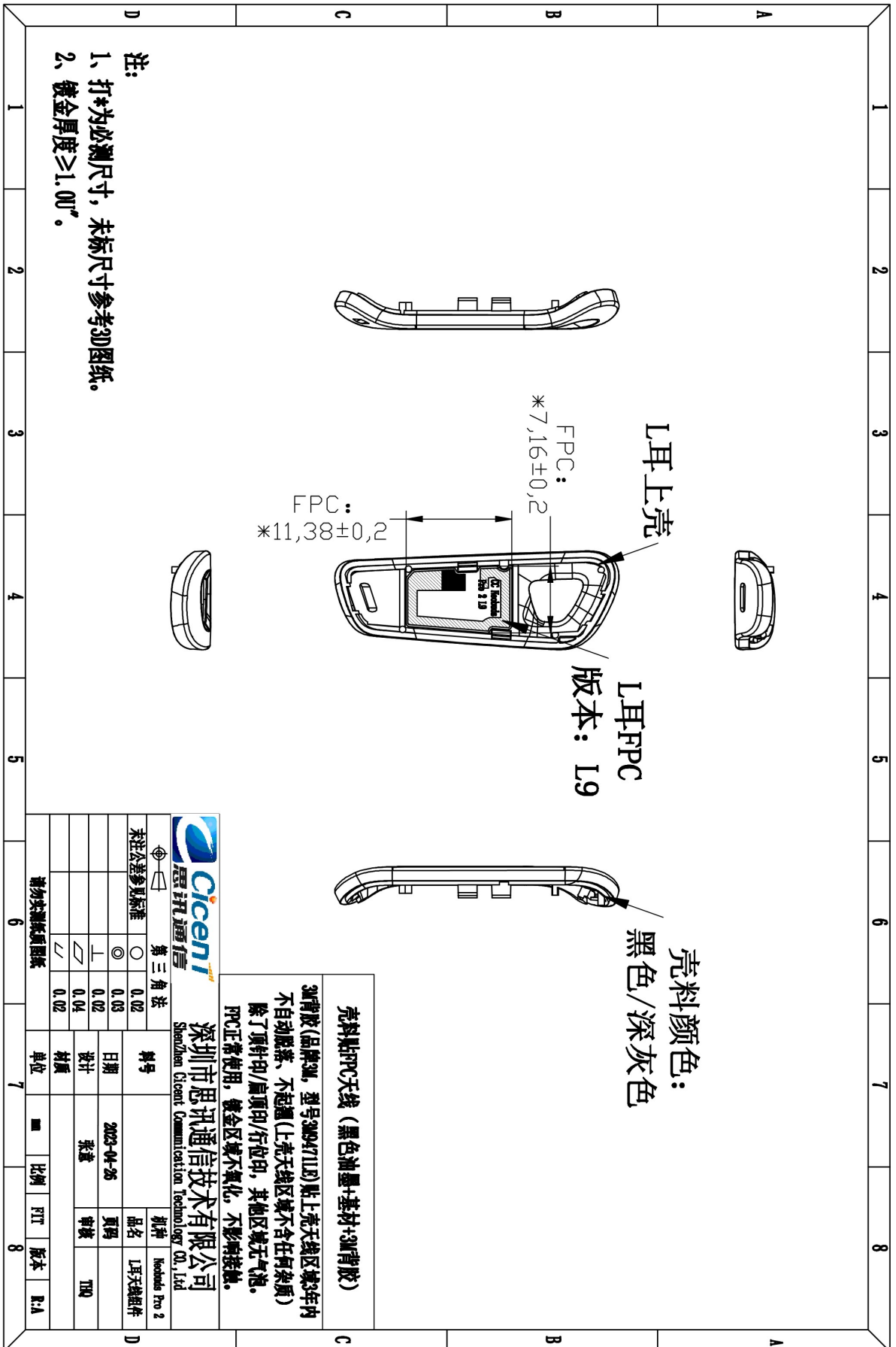
R-matching circuit

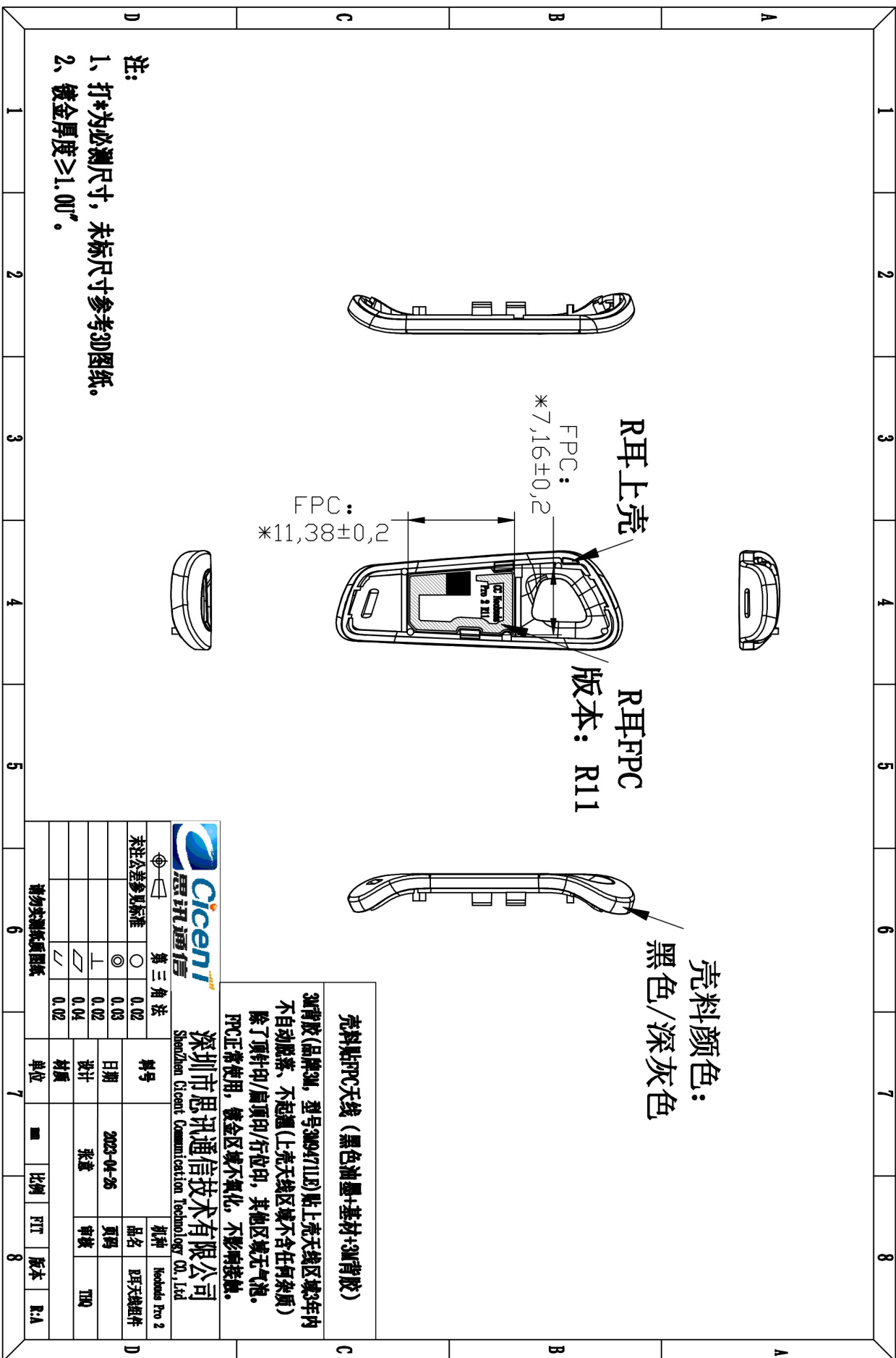
Element	Value
E1	1.5pF
E2	0Ω
E3	N/A

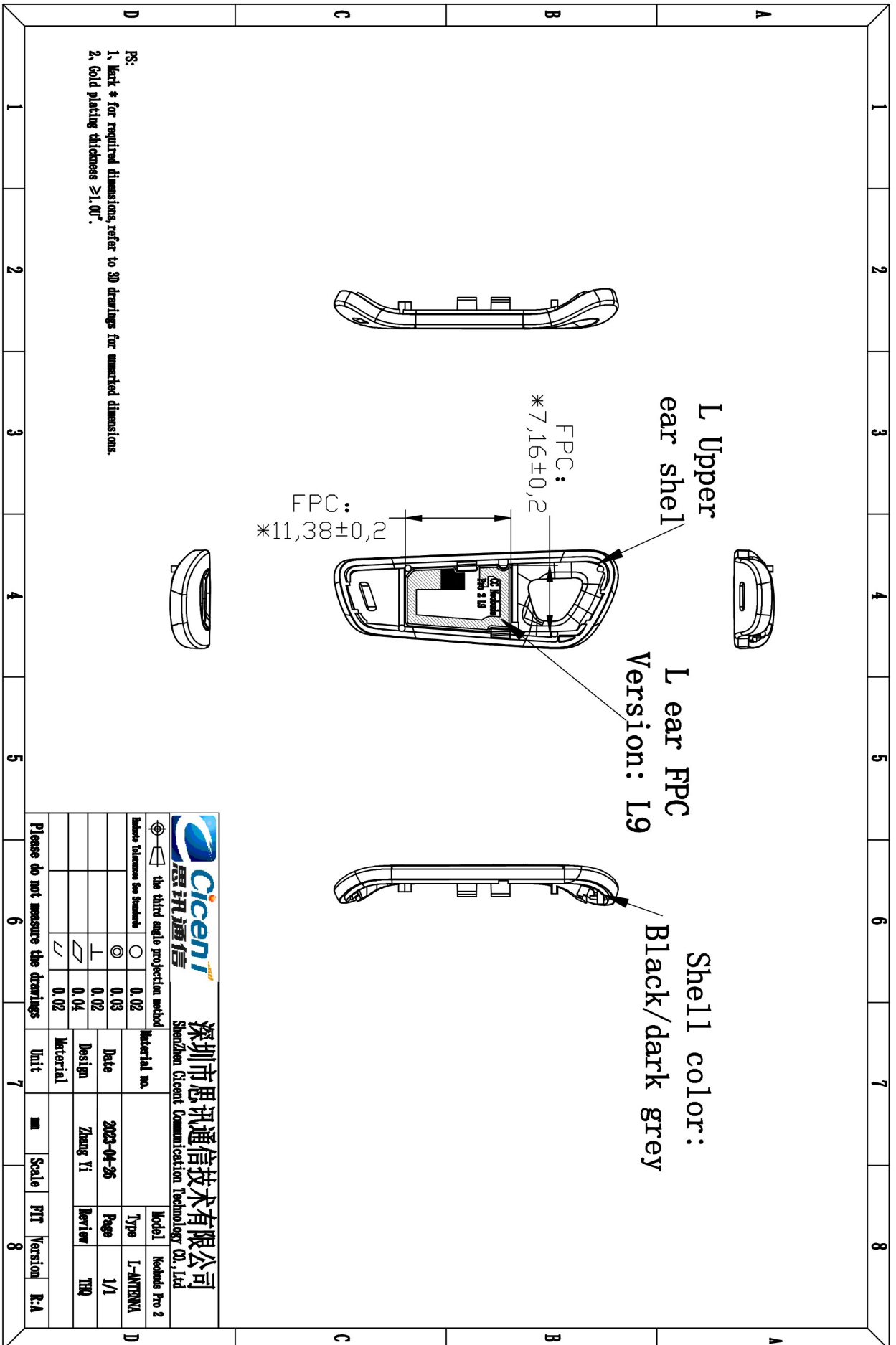


四：结构图档

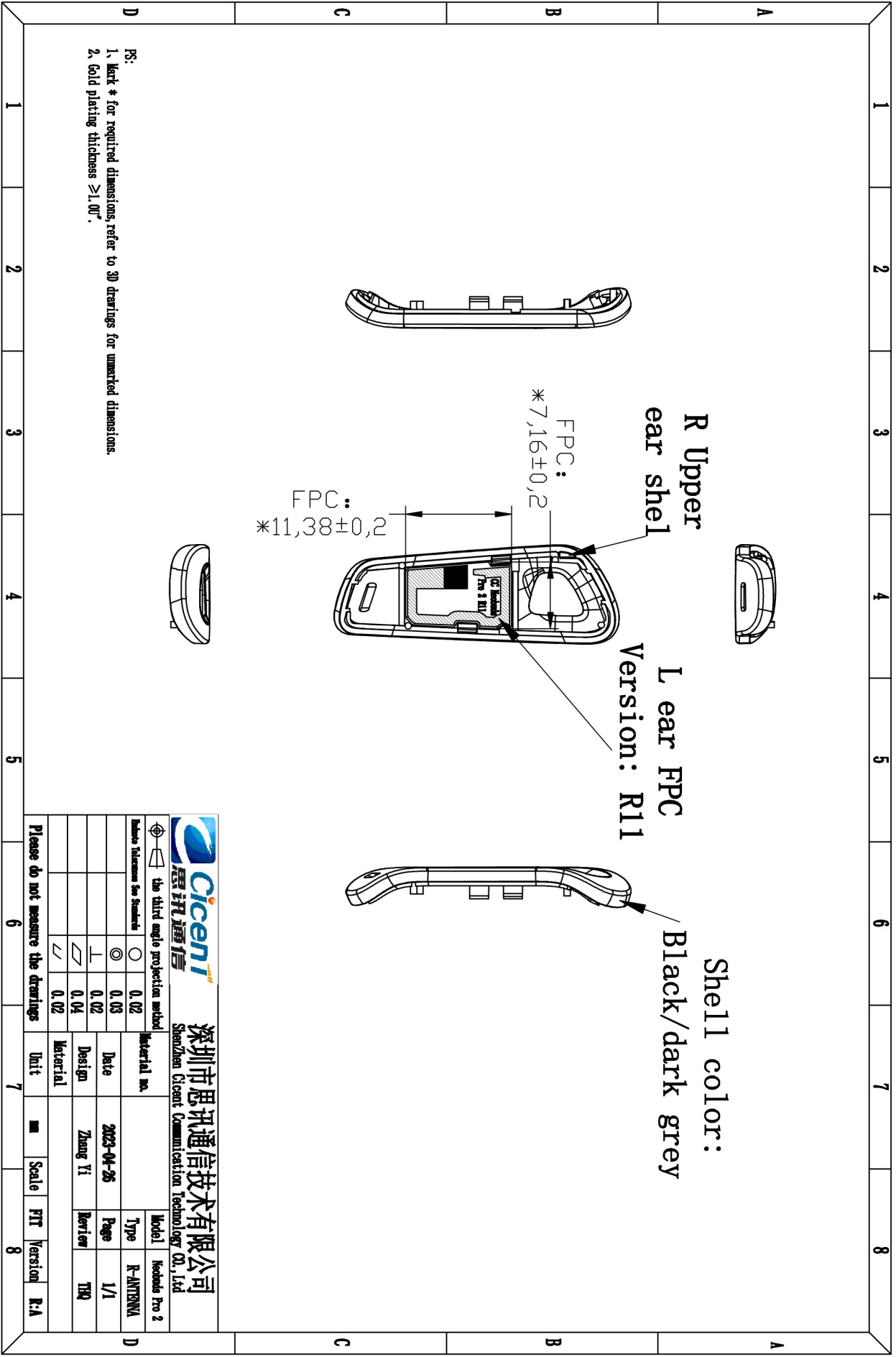
IV: Structure file







		<b>深圳市思讯通信技术有限公司</b> Shenzhen Cicent Communication Technology Co., Ltd	
	the third angle projection method	Material no.	Model
<input type="radio"/>	0.02	Date	2023-04-26
<input type="radio"/>	0.03	Design	Zhang Yi
<input type="radio"/>	0.02	Material	Review
<input type="radio"/>	0.04	Unit	Scale
<input type="radio"/>	0.02	PTT	Version
Please do not measure the drawings		R.A	



深圳市思讯通信技术有限公司 Shenzhen Cicent Communication Technology Co., Ltd.		Model: Neodus Pro 2 Type: R-ANTENNA	
the third angle projection method	Material no.	Date	Page
1. 0.02 2. 0.03 3. 0.02 4. 0.04 5. 0.02	Material	2023-04-26	1/1
6. 0.02	Unit	Design: Zhang Yi	Barlow
7. 0.02	Scale	Version: R: A	
Please do not measure the drawings			