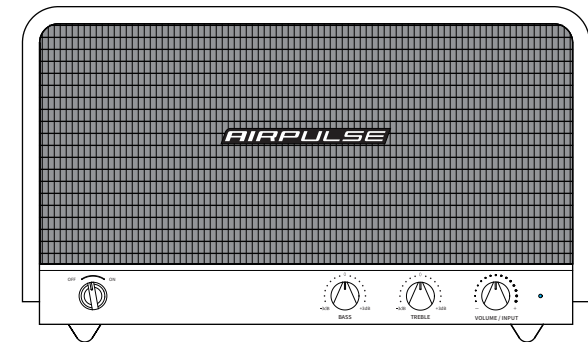


AIRPULSE



Dongguan Platinum Audio Systems Co., LTD

No. 2 East Industry Road, Songshan Lake National High-tech
Industrial Development Zone, Dongguan 523808 China

www.airpulseaudio.com

Printed in China

P100X

Active Speaker

User manual

Important safety instruction

Please read the following contents carefully before turning on your equipment; and follow the instructions below.

Keep this information around for future reference.

1. Please read the instructions carefully. Keep it in safe place for future reference
2. Heed all warnings.
3. Follow all instructions.
4. Do not install near any heat sources such as radiators, heat registers, stoves, or other apparatus (including amplifiers) that produce heat.
5. Do not defeat the safety purpose of the polarized or grounding-type plug. A polarized plug has two blades with one wider than the other. A grounding type plug has two blades and a third grounding prong. The wide blade or the third prong are provided for your safety. If the provided plug does not fit into your outlet, consult an electrician for replacement of the obsolete outlet.
6. Protect the power cord from being walked on or pinched particularly at plugs, convenience receptacles, and the point where they exit from the speaker.
7. Only use attachments/accessories specified by the manufacturer.
8. Unplug this speaker during lightning storms or when unused for long periods of time.
9. Before connecting speakers to power source, please turn off the power switch and make sure the volume is set at minimum level.
10. Please do not place power cable and signal cable near heat source (such as electric heater and radiator).
Do not leave cables where they can easily be stepped on or compressed.
11. Use electric outlets that allow power cable be pulled out easily. When speakers are not being used for an extended period of time, please turn off power switch and disconnect power plug.
12. In order to avoid damage from thunder and lightning, turn off power switch and disconnect speaker from power source during a rain storm.
13. Please do not drag power cable when disconnecting from wall socket. Hold power cord firmly at the top to unplug from the wall socket.
14. Use the speakers only within voltage specifications. Using the speakers with voltage higher than specifications is dangerous and can cause equipment damage, fire damage or bodily injury.
15. These speakers do not include any self serviceable parts. Do not attempt to open the speaker to uninstall any parts or do any type of modifications. If problems occur during use please contact professional technicians only for repair.
16. Please refer to the trouble shooting section in owner's manual for common operation errors and to determine possible malfunction.
17. Please do not place speakers in places where they can be easily hit by falling objects or dropping and splashing liquid. Do not place any lit fire (such as candle) on top of speaker as this may lead to fire hazard.
Do not place any liquid containers on top of speaker as this may fall on speakers and causing electric shock and damage to speaker.
18. Place speakers in a stable position so they will not easily fall off causing damage and injury.
19. Place speakers in a well ventilated and dry position, far from direct sunlight, heat source, vibration, dust, moist or extremely cold condition. For optimal performance, please leave at least 20 cm distance space around the speaker.
20. Please do not use speaker at maximum volume for an extended period of time, This may cause damage to your hearing.
21. Before moving the speakers, please first turn off power switch and disconnect from power source.
22. When the following symptoms occur, please turn off power switch and disconnect from power source:
 - Power cable or plug is worn or damaged.
 - Abnormal odor or smoke is detected.
 - Small objects falling inside the speaker.
 - Sudden break off while playing music.Consult a professional repair technician to diagnose and repair the speaker.
23. Do not use chemical solvent to clean the surface of speaker. To avoid surface damage, use a clean and soft cloth only.
24. Do not use the speakers in proximity closer than 22 cm to individuals wearing cardiac pacemaker or defibrillator.

Important safety instruction

Warning:

1. Use the same type of battery only to replace battery in remote control.
2. Never disassemble, smash, or compress battery inside remote control; or toss it into a fire.
3. Please stop using the remote control if it has the appearance of bulging, leaking, discoloring or any other abnormal symptoms. Improper use of battery can cause explosion or leaking which leads to burn or other bodily injury. Please dispose battery by referring to local legislation.



Excessively loud music may lead to hearing loss. Please keep the volume in a safe range.



Correct Disposal of this product. This marking indicates that this product should not be disposed with other household wastes throughout the EU. To prevent possible harm to the environment or human health from uncontrolled waste disposal, recycle it responsibly to promote the sustainable reuse of material resources. To return your used device, please use the return and collection systems or contact the retailer where the product was purchased. They can take this product for environmental safe recycling.



Use only with the cart, stand, tripod, bracket, or table specified by the manufacturer, or sold with the speakers. When a cart is used, use caution when moving the cart/speakers combination to avoid injury from tip-over.

Power warning:

1. Place the product near the power outlet for easy use.
2. Before use, make sure that the operating voltage is the same as your local power supply. Correct operating voltage can be found on the product plate.
3. For safety purpose, unplug the product during lightning storms or when unused for extended periods of time.
4. Under normal conditions, the power supply may get hot. Please keep good ventilation in the area and exercise caution.
5. Safety warning labels on the housing or bottom of the product or power adaptor.



This symbol is to alert the user to the presence of un-insulated dangerous voltage within the product's enclosure that may be of sufficient magnitude to constitute a risk of electric shock to persons.



This symbol is to warn the user not to disassemble the enclosure of the product and there is no user-replaceable part inside. Take the product to an authorized service center for repair.



This symbol indicates that the product is for indoor use only.



This symbol indicates that the product is a CLASS II or double insulated electrical device with no earth requirement.

The MAINS plug is used as the disconnect device, the disconnect device shall remain readily operable.

For wireless product:

1. Wireless product may generate shortwave radio frequencies and interfere with the normal use of other electronic devices or medical equipment.
2. Turn off the product when it's disallowed. Do not use the product in medical facilities, on airplane, at gas stations, near automatic gates, automatic fire alarm system or other automated devices.
3. Do not use the product in the vicinity of a pacemaker within a 20cm range. The radio waves may affect the normal operation of the pacemaker or other medical devices.

Important safety instruction

FCC Statement

This device complies with part 15 of the FCC Rules. Operation is subject to the following two conditions:

- (1) This device may not cause harmful interference, and
- (2) This device must accept any interference received, including interference that may cause undesired operation.

Any Changes or modifications not expressly approved by the party responsible for compliance could void the user's authority to operate the equipment.

Note: This equipment has been tested and found to comply with the limits for a Class B digital device, pursuant

to part 15 of the FCC Rules. These limits are designed to provide reasonable protection against harmful interference in a residential installation.

This equipment generates uses and can radiate radio frequency energy and, if not installed and used in accordance with the instructions, may cause harmful interference to radio communications.

However, there is no guarantee that interference will not occur in a particular installation. If this equipment does cause harmful interference to radio or television reception, which can be determined by turning the equipment off and on, the user is encouraged to try to correct the interference by one or more of the following measures:

- Reorient or relocate the receiving antenna.
- Increase the separation between the equipment and receiver.
- Connect the equipment into an outlet on a circuit different from that to which the receiver is connected.
- Consult the dealer or an experienced radio/TV technician for help.

This equipment complies with FCC radiation exposure limits set forth for an uncontrolled environment. This equipment should be installed and operated with minimum distance 20cm between the radiator & your body.

FCC ID:Z9G-EDF126

IC Caution

The device meets the exemption from the routine evaluation limits in section 2.5 of RSS 102 and compliance with RSS-102 RF exposure, users can obtain Canadian information on RF exposure and compliance.

This device contains licence-exempt transmitter(s)/receiver(s) that comply with Innovation, Science and Economic Development Canada's licence-exempt RSS(s). Operation is subject to the following two conditions:

- (1) This device may not cause interference.
- (2) This device must accept any interference, including interference that may cause undesired operation of the device.

This equipment should be installed and operated with a minimum distance of 20 cm between the radiator and your body.

Le dispositif rencontre l'exemption des limites courantes d'évaluation dans la section 2.5 de RSS102 et la conformité à l'exposition de RSS-102 rf, utilisateurs peut obtenir l'information canadienne sur l'exposition et la conformité de rf.

L'émetteur/récepteur exempt de licence contenu dans le présent appareil est conforme aux CNR d'Innovation, Sciences et Développement économique Canada applicables aux appareils radio exempts de licence. L'exploitation est autorisée aux deux conditions suivantes :

- (1) L'appareil ne doit pas produire de brouillage;
- (2) L'appareil doit accepter tout brouillage radioélectrique subi, même si le brouillage est susceptible d'en compromettre le fonctionne.

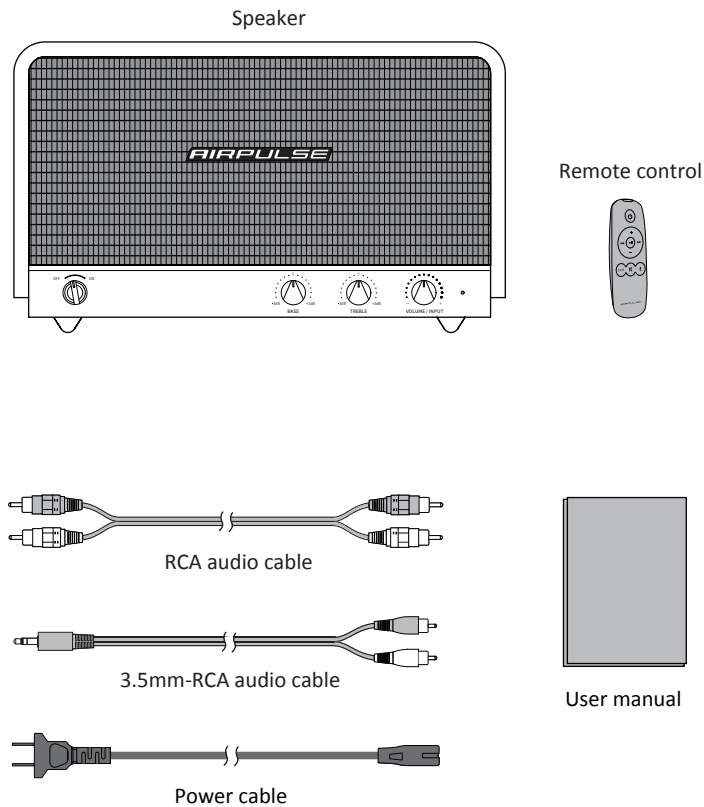
Cet équipement doit être installé et utilisé à une distance minimale de 20 cm entre le radiateur et votre corps.

IC:10004A-EDF126

Catalog

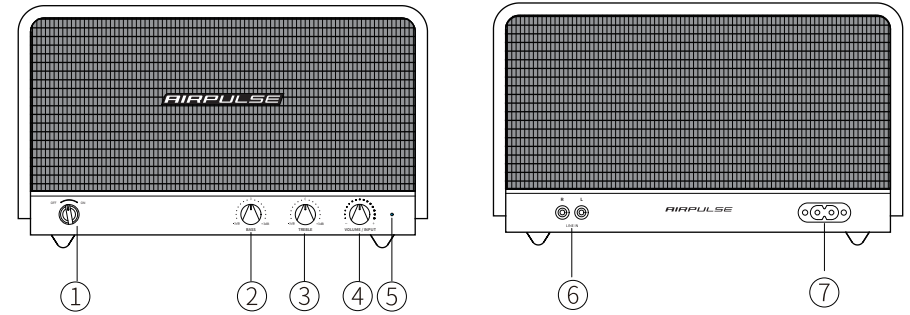
Box Contents	5
Speaker Illustration	6
Remote Control Illustration	7
Installing Battery in Remote Control	8
Preparations	9
Connect to power source	9
Speaker placement	9
Playback instruction	10
Connect to playback devices	10
Playing	11
Specifications/statement	12
Troubleshooting	13

Box contents



Note: Images are for illustrative purposes only and may differ from the actual product.

Speaker illustration



① Power switch

Turn on/off speaker power

Turn on: rotate the switch right and release until you hear prompt tone along with the orange light around the switch lighting up (please note the light will be lit in 1 second after the prompt tone rings);

Turn off: rotate the switch left and release until you hear prompt tone along with the orange light around the switch turning off.

(Note: Turning off the power switch will only turn the amplifier off, and power source is still available. To thoroughly turn the speaker off, please unplug the power cable from the mains socket.)

② BASS: Bass dial

Increase or decrease low frequencies within the range of +/-3dB, and satisfy different listening preferences or match various surroundings.

③ TREBLE: Treble dial

Increase or decrease high frequencies within the range of +/-3dB, and obtain different timbre through adjustment.

④ VOLUME/INPUT: Volume control/input selection

Rotate: adjust volume level;

Press: switch input mode (type), Indicate the current input mode in terms of the input mode indicator.

⑤ Input mode indicator

Indicate the current input mode (type),
Orange light steady lit: Line In input mode
Blue light steady lit: Bluetooth input mode
Note: For initial pairing, the blue light will flash when Bluetooth input is selected, after pairing is successful, the blue light will be steady lit.

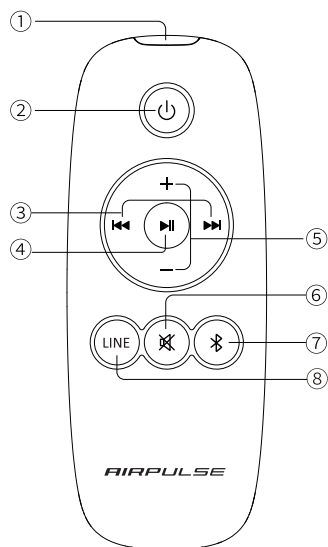
⑥ LINE IN: Line In input port

Connect to playback devices using RCA audio cable.

⑦ Power cable connector

Connect to plug of power cable.

Remote control illustration



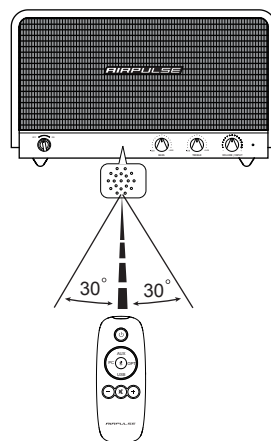
①		Infrared emission window
②		Standby/power on
Playback selection buttons		
③		Previous/next track in Bluetooth input
④		Play/pause in Bluetooth input
Volume control buttons		
⑤		Adjust playing volume
⑥		Mute off speaker output
Audio source selection buttons		
⑦		Bluetooth input
⑧	LINE	Line In input



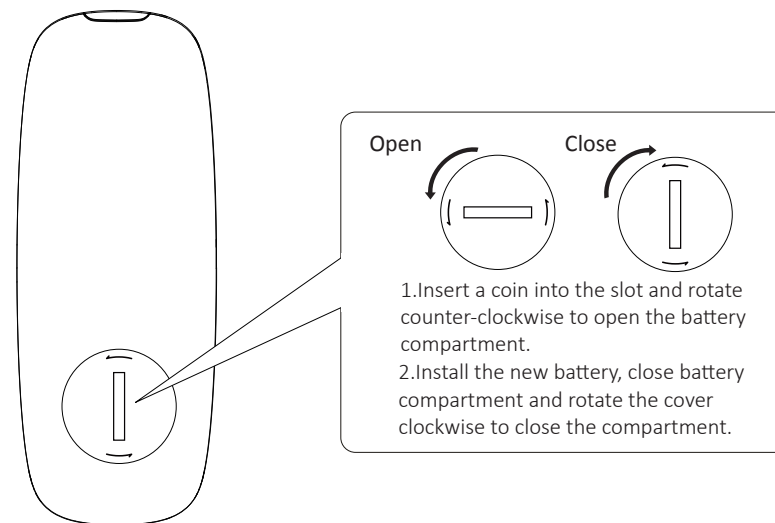
* When playing music in Bluetooth mode and switching to other modes, Bluetooth connection will automatically return if selecting Bluetooth mode again.

How to operate the remote control

Aim the remote control at the remote control receiving window on the speaker. When the system receives remote control commands, the indicator will alert color or flash.



Installing battery in remote control



1. Insert a coin into the slot and rotate counter-clockwise to open the battery compartment.
2. Install the new battery, close battery compartment and rotate the cover clockwise to close the compartment.

Note:

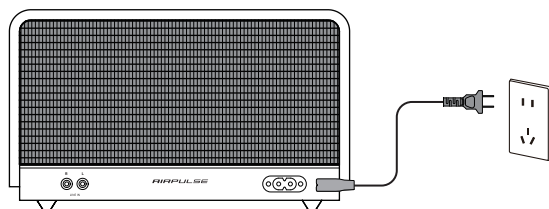
1. The battery life is normally about 6 months; please replace it when the remote control is not sensitive or the control distance to be shortened.
2. Remove the battery immediately when exhausted to avoid explosion or acid leaks.
3. Discard the battery immediately in the event of battery leakage, paying attention not to touch the leaking materials. If leaking is in contact with skin or gets in eyes/mouth, rinse immediately and seek emergency treatment immediately. Please clean the battery compartment thoroughly prior to installing new battery.
4. Never use the remote control in conditions below:
 - Places with high humidity, e.g. a bathroom
 - Places with high temperature, e.g. near a heater or stove
 - Places with extremely low temperature
 - In dusty places
5. Remove the battery when unused for a long period of time to avoid battery leakage.
6. Do not use this product when battery compartment is not securely closed, and keep the remote control away from children.
7. There is a cell battery inside this product, if swallowed it will cause serious bodily injury; possibly death in 2 hours. Never let children touch the battery.
8. If the battery is accidentally swallowed, rush to hospital immediately.

Preparations

Connect to power source

* Connect the power cable included to power input port on the rear panel, and then insert power plug into the mains socket on the ground or on the wall.

* Refer to the "Power switch" on page 6 to turn on/off the speaker, and press the " ⏻ " button on the remote control to switch to Standby/Power on state.



(Note: Turning off the power switch will only turn the amplifier off, and power source is still available. To thoroughly turn the speaker off, please unplug the power cable from the mains socket.)

Speaker placement

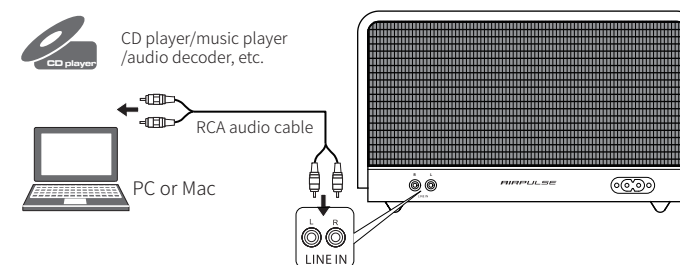
* Place the speaker on a solid, leveled and steady surface.

* The speaker with compact and delicate look can be easily carried around. It can also be placed on desktop, in bedroom, in living room, or at any other indoor corners. Make your room full of vitality.

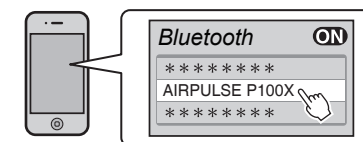
Playback instruction

Connect to playback devices

1.Line in input: Insert the RCA audio cable included into the "LINE IN" port on the speaker; then connect the RCA audio cable to your playback device.



2. Bluetooth input: Please switch to Bluetooth input mode, and set your Bluetooth device to search for and connect to "AIRPULSE P100".



Note:

* Pin code for connection is "0000" if needed.

* For initial pairing, the blue light will flash, and will be steady lit after pairing is successful. If the blue light flashes in a breathing pattern, it means the pairing failed, please pair again. Operations may be different among different devices, please refer to the operational instructions attached with the devices.

* Effective Bluetooth connection distance is within 10 meters.

* The Bluetooth of P100X can only be searched and connected in Bluetooth input. The existing Bluetooth connection will be disconnected once the speaker is switched to line in input. When switched to Bluetooth input, the speaker will try to connect to the Bluetooth device connected last time.

* To disconnect Bluetooth, press and hold the " ✖ " button on the remote control for over 2 seconds, or press and hold the "VOLUME/INPUT" dial on the front panel of the speaker.

* To enjoy all Bluetooth functions please ensure your audio device has A2DP(Advanced Audio Distribution Profile) and AVRCP(Audio Video Remote Control Profile) profiles.

* When connected to this product, Bluetooth connectivity and functions may be different among different Bluetooth devices, depending on software settings of Bluetooth devices.

Playback instruction

Playing

1. For line in input, please ensure the orange light is lit; if not, please press the "VOLUME/INPUT" dial to select line in input, then press the playing button on your device to play music, and adjust volume to a desired level with the "VOLUME/INPUT" dial.
 2. For Bluetooth input, please ensure the blue light is lit and the speaker and Bluetooth device are paired (if not, please follow the pairing method mentioned above to complete pairing.), then press the playing button on your device or on music APP to play music, and adjust volume to a desired level with the "VOLUME/INPUT" dial. In Bluetooth input mode, press the " ⏮ " / " ⏭ " button on the remote control to skip to previous/next track, and press the " ⏸ " button to pause/play songs.
- * It is recommended to set your player volume at a relatively high level, then use the volume adjustment on the speaker to control the entire volume for optimum effect.
 - * Please set the speaker volume at the minimum level prior to playing.

Specifications/statement

Power Output: Treble: 10W+10W
Woofer: 40W
Frequency Range: 52Hz-40KHz
Input Mode: Line In, Bluetooth
Tweeter: Airblade Tweeter
Mid-Woofer: 4.5 inch Aluminum Cone Mid-Woofer (122mm)
Cabinet Size (WxHxD): 300 x 180 x 200mm
Net Weight: 5.1 Kg/Set

NOTICE: For the need of technical improvement and system upgrade, information contained herein may be subject to change from time to time without prior notice.

Troubleshooting

No sound

- Check if the speaker is powered on.
- Try to turn up the volume using either the master volume control or remote control.
- Ensure the audio cables are firmly connected and the input is set correctly on the speaker.
- Check if there is a signal output from the audio source.

Cannot connect via Bluetooth

- Make sure the speaker is switched to Bluetooth input, in other audio input mode Bluetooth can not be paired or connected. Disconnect from any Bluetooth device by press and hold the " ⌘ " button in Bluetooth mode, and then try again.
- Effective Bluetooth transmission range is 10 meters, please make sure operation is within the range.
- Try another Bluetooth device for connection.

The P100X does not turn on

- Check if mains power is connected, or if the wall outlet is switched on.

Noise coming from speaker

- AIRPULSE speakers generate little noise, while the background noise of some audio devices are too high. Please unplug audio cables and turn the volume up, there should be no sound can be heard at 1 meter away from this product.
- Move digital equipment or high-frequency equipment far away from this product.

If you want to find out more about AIRPULSE, please visit our website at www.airpulseaudio.com