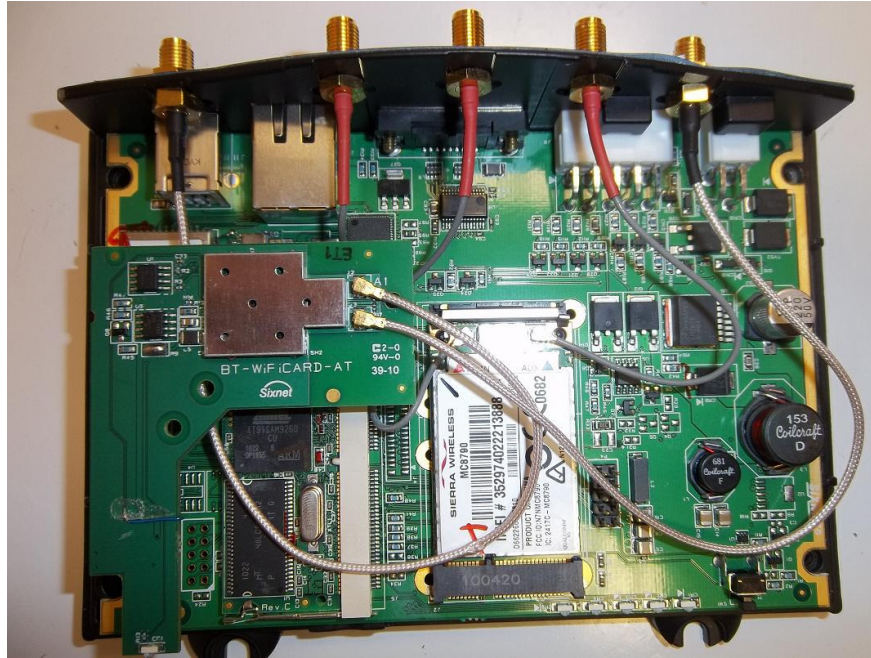


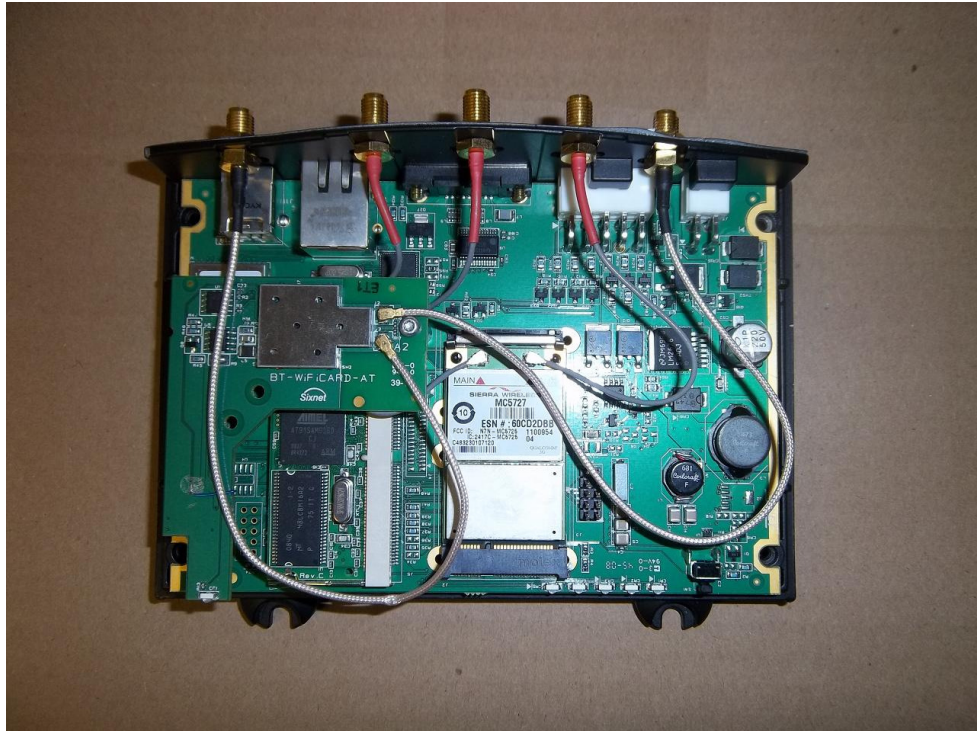
BT-5630V2 and BT-5830V2 INTERNAL PICTURES

The differences between the BT-5630V2 and the BT-5830V2 are carrier based. The BT-5630V2 is for carriers that use CDMA technology. The BT-5830V2 is for carriers that use HSPA technology. Both units have the same printed circuit board in it. The BT-5830V2 has a few population differences based on that HSPA technology requires a SIM card. The BT-5630V2 has no SIM card.

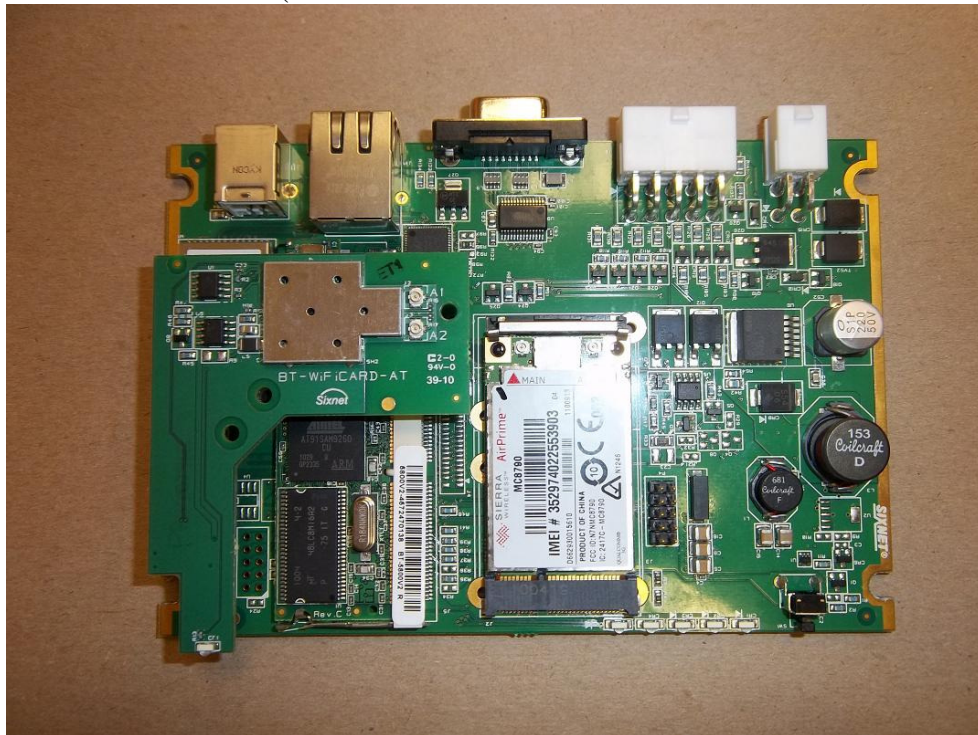
BT-5830V2 COMPLETE UNIT WITH TOP COVER OFF



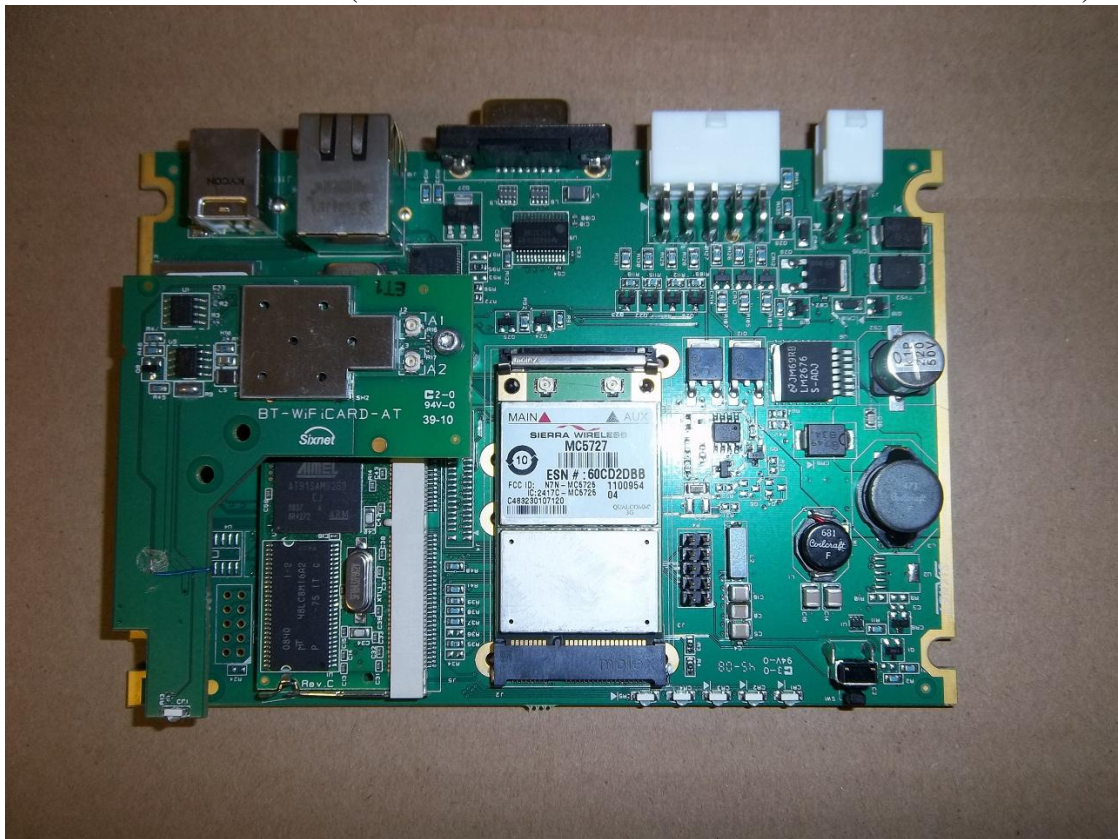
BT-5630V2 COMPLETE UNIT WITH TOP COVER OFF



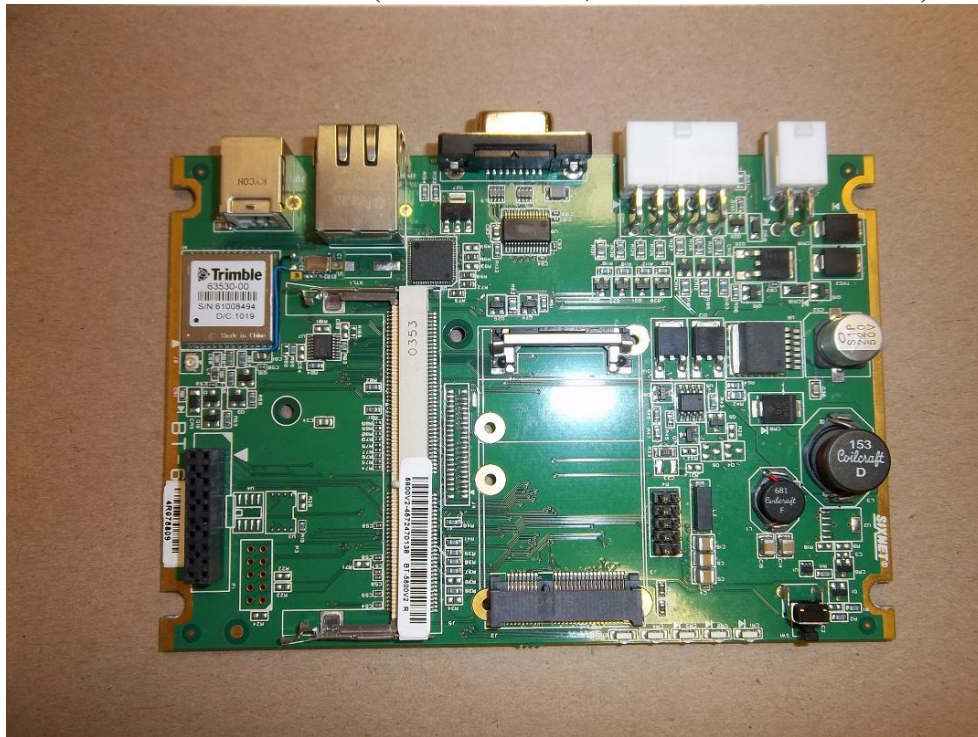
BT-5830V2 TOP SIDE (WIFI BOARD IS L SHAPED BOARD ON LEFT SIDE)



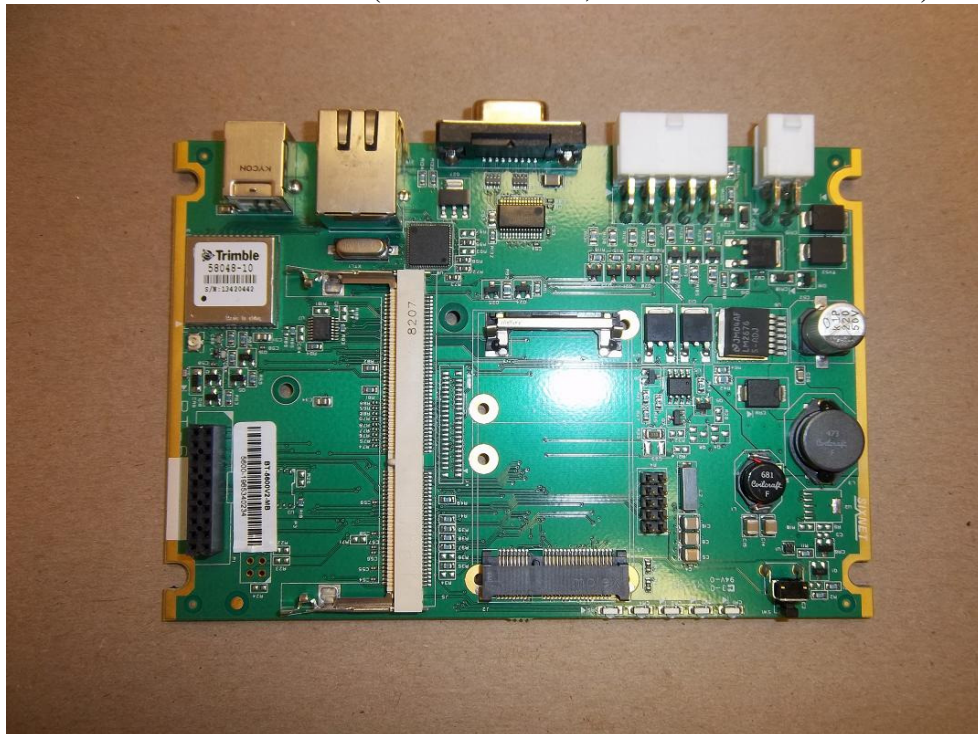
BT-5630V2 TOP SIDE (WIFI BOARD IS L SHAPED BOARD ON LEFT SIDE)



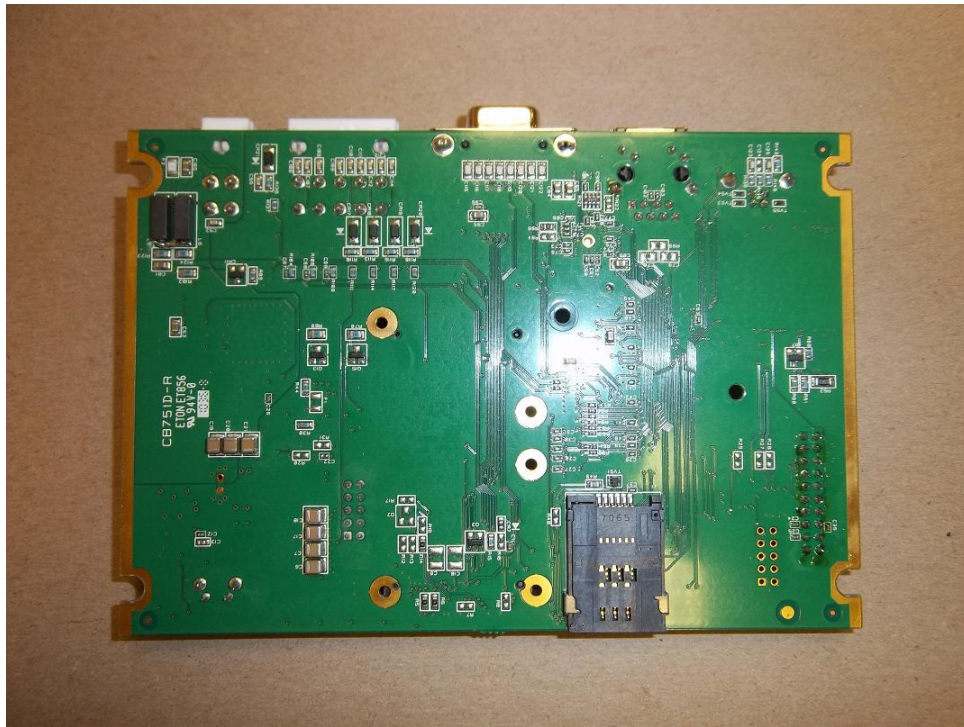
BT-5830V2 TOP SIDE (minus the WIFI, CPU and Cellular boards)



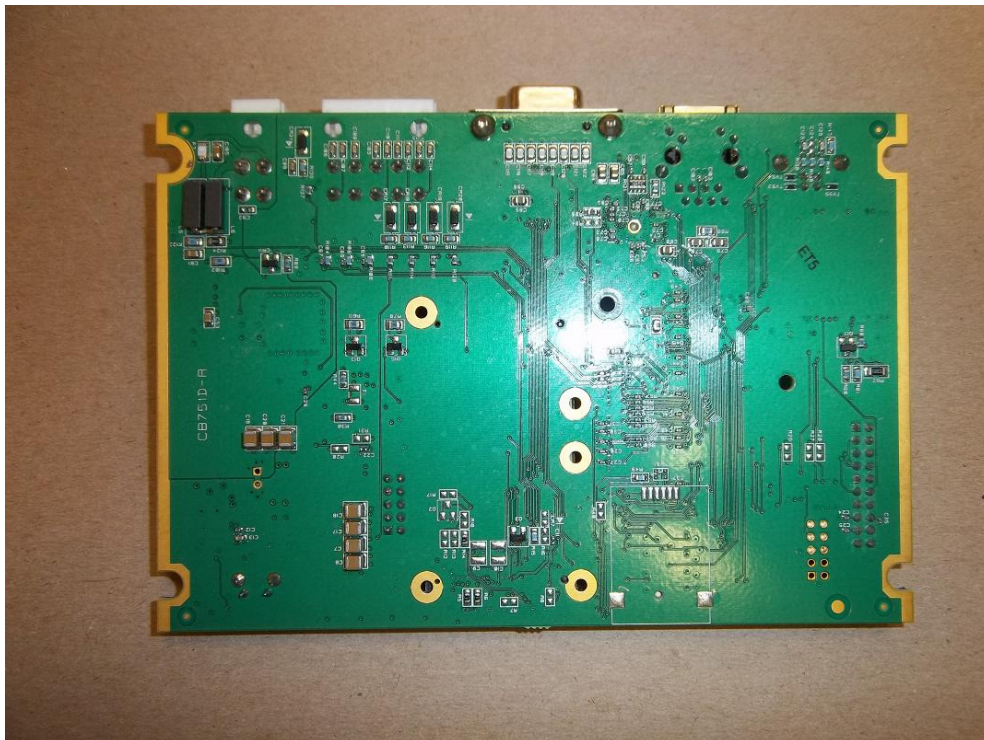
BT-5630V2 TOP SIDE (minus the WIFI, CPU and Cellular boards)



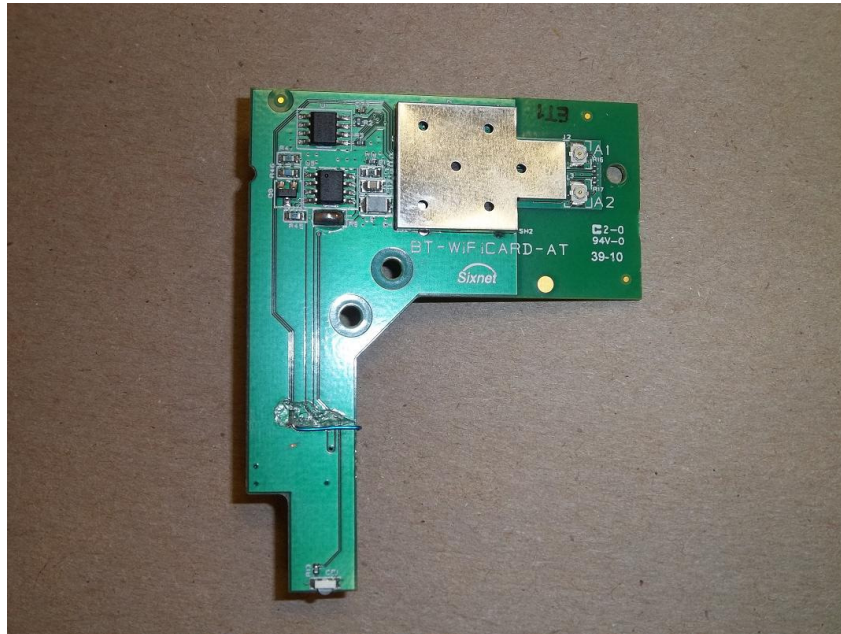
BT-5830V2 BOTTOM SIDE



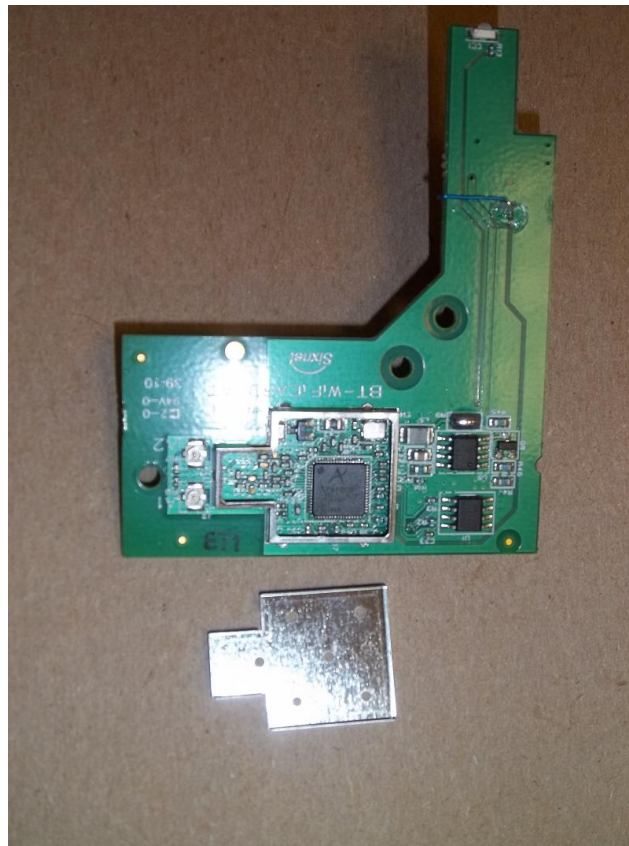
BT-5630V2 BOTTOM SIDE



WIFI BOARD TOP SIDE



WIFI BOARD TOP SIDE WITH SHIELD OFF WIFI CHIP AREA



WIFI BOARD BOTTOM SIDE

