



RS-H8

Wireless Rear Speaker

USER MANUAL

Thank you for purchasing this product.

To use this product safely, read and understand this operation manual thoroughly before using it. After reading this manual, keep it in a safe place so that it can be used when necessary.

Important Safety Instructions



The lightning flash with arrowhead symbol, within an equilateral triangle, is intended to alert the user to the presence of uninsulated "dangerous voltage" within the product's enclosure that may be of sufficient magnitude as to constitute a risk of electric shock to persons.

The exclamation point within an equilateral triangle is intended to alert the user to the presence of important operating and maintenance (servicing) instructions in the literature accompanying the appliance.

CAUTION
RISK OF ELECTRIC SHOCK
DO NOT OPEN

AVIS
RISQUE DE CHOC ELECTRIQUE
NE PAS OUVRIR

CAUTION: TO REDUCE THE RISK OF ELECTRIC SHOCK, DO NOT REMOVE COVER (OR BACK). NO USER-SERVICEABLE PARTS INSIDE. REFER SERVICING TO QUALIFIED SERVICE PERSONNEL.

Safety

- Read these instructions** – All the safety and operating instructions should be read before this product is operated.
- Keep these instructions** – The safety and operating instructions should be retained for future reference.
- Heed all warnings** – All warnings on the appliance and in the operating instructions should be adhered to.
- Follow all instructions** – All operating and usage instructions should be followed.
- Do not use this apparatus near water** – The appliance should not be used near water or moisture – for example, in a wet basement or near a swimming pool and the like.
- Clean only with a dry cloth.**
- Do not block any ventilation openings.** Install in accordance with the manufacturer's instructions.
- Do not install near any heat sources such as radiators, heaters, stoves, or other apparatus (including amplifiers) that produce heat.
- Do not defeat the safety purpose of the polarized or grounding plug. A polarized plug has two blades with one wider than the other. A grounding plug has two blades and a third grounding prong. The wide blade or the third prong is provided for your safety. If the provided plug does not fit into your outlet, consult an electrician for replacement of the obsolete outlet.
- Protect the power cord from being walked on or pinched particularly at plugs, convenience receptacles, and the point where they exit from the apparatus.
- Only use attachments/accessories specified by the manufacturer.
- Use only with the cart, stand, tripod, bracket or table specified by the manufacturer, or sold with the apparatus. When a cart or rack is used, use caution when moving the cart/apparatus combination to avoid injury from tip-over.
- Unplug the apparatus during lightning storms or when unused for long periods of time.
- Refer all servicing to qualified personnel. Servicing is required when the apparatus has been damaged in any way, such as power supply cord or plug is damaged, liquid has been spilled or objects have fallen into the apparatus, the unit has been exposed to rain or moisture, does not operate normally, or has been dropped.
- This equipment is a Class II or double insulated electrical appliance. It has been designed in such a way that it does not require a safety connection to electrical earth.
- The apparatus shall not be exposed to dripping or splashing. No objects filled with liquids, such as vases, shall be placed on the apparatus.

- Minimum distance around the apparatus for sufficient ventilation is 5cm.
- The ventilation should not be impeded by covering the ventilation openings with items, such as newspapers, table-cloths, curtains, etc...
- No naked flame sources, such as lighted candles, should be placed on the apparatus.
- The use of apparatus in moderate or tropical climates.

Caution:

- Use of controls or adjustments or performance of procedures other than those described herein, may result in hazardous radiation exposure or other unsafe operation.
- To reduce the risk of fire or electric shock, do not expose this apparatus to rain or moisture. The apparatus must not be exposed to dripping or splashing and objects filled with liquids, such as vases, must not be placed on apparatus.
- The mains plug/appliance coupler is used as the disconnect device, the disconnect device must remain readily operable.
- Danger of explosion if battery is incorrectly replaced. Replace only with the same or equivalent type.

Correct Disposal of this product. This marking indicates that this product should not be disposed with other household wastes throughout the EU. To prevent possible harm to the environment or human health from uncontrolled waste disposal, recycle it responsibly to promote the sustainable reuse of material resources. To return your used device, please use the return and collection systems or contact the retailer where the product was purchased. They can take this product for environmental safe recycling.



We hereby declares that this product is in compliance with the essential requirements and other relevant provisions of RED Directive 2014/53/EU and UK Radio Equipment Regulations 2017.

Warning

- Before operating this system, check the voltage of this system to see if it is identical to the voltage of your local power supply.
- Do not place this unit close to strong magnetic fields.
- Do not place this unit on the amplifier or receiver.
- If any solid object or liquid falls into the system, unplug the system and have it checked by qualified personnel before operating it any further.
- Do not attempt to clean the unit with chemical solvents as this may damage the finish. Use a clean, dry or slightly damp cloth.
- When removing the power plug from the wall outlet, always pull directly on the plug, never yank on the cord.
- Changes or modifications to this unit not expressly approved by the party responsible for compliance will void the user's authority to operate the equipment.
- The rating label is pasted on the bottom or back of the equipment.

FCC Statement :

This device complies with Part 15 of the FCC Rules. Operation is subject to the following two conditions:

1) This device may not cause harmful interference, and 2) This device must accept any interference received, including interference that may cause undesired operation.

Note: This equipment has been tested and found to comply with the limits for a Class B digital device, pursuant to part 15 of the FCC Rules. These limits are designed to provide reasonable protection against harmful interference in a residential installation. This equipment generates, uses, and can radiate radio frequency energy and, if not installed and used in accordance with the instructions, may cause harmful interference to radio or television reception, which can be determined by turning the equipment off and on, the user is encouraged to try to correct the interference by one or more of the following measures:

- Reorient or relocate the receiving antenna.
 - Increase the separation between the equipment and receiver.
 - Connect the equipment into an outlet on a circuit different from that to which the receiver is connected.
 - Consult the dealer or an experienced radio/TV technician for help.
- Caution: Changes or modifications not expressly approved by the party responsible for compliance could void the user's authority to operate the equipment.

IC-CANADA :

This device contains licence-exempt transmitter(s)/receiver(s) that comply with Innovation, Science and Economic Development Canada's licence-exempt RSS(s). Operation is subject to the following two conditions:

(1) This device may not cause interference.
(2) This device must accept any interference, including interference that may cause undesired operation of the device.

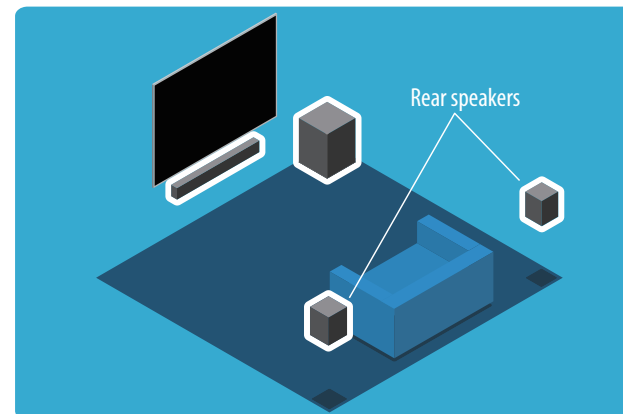
California Prop 65 Warning :

WARNING This product can expose you to chemicals including Lead, which is known to the State of California to cause cancer. For more information go to: www.P65Warnings.ca.gov.

What You Can Do with the Rear Speakers

The following are available when the rear speakers are used with the Soundbar (U5120G/AX2106G) (not supplied).

- You can enjoy the surround sound that makes you feel as if you were actually listening to a live performance.
- You can update the software of the rear speakers. For details, refer to the Operating Instructions supplied with the Soundbar (U5120G/AX2106G).



Note

- The rear speakers are designed exclusively for use with the Soundbar (U5120G/AX2106G) and cannot be used with other devices.
- Install the rear speakers vertically.

Mounting the Rear Speaker on a Wall

You can mount the rear speakers on a wall.

Note

- Improper wall mounting may result in accident, injury or damage. If you have any query, contact Consumer Care in your country.
- Additional tools (not included) are required for the installation.
- Prepare screws (not supplied) that are suitable for the wall material and strength. As a plasterboard wall is especially fragile, attach the screws securely in the wall beam. Install the speakers horizontally, hung by screws in studs in a continuous flat section of the wall.

WARNING

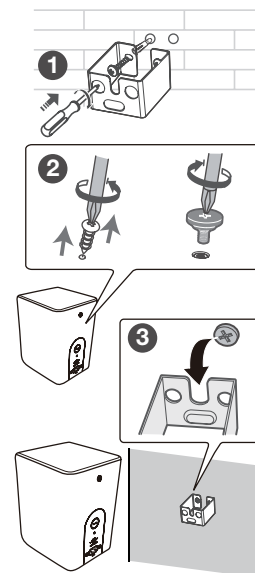
- To prevent injury, this apparatus must be securely attached to the floor/wall in accordance with the installation instructions.
- Suggested wall mounting height: ≤ 1.5 meters.

1 Tighten the wall mount brackets on the wall with screws and screwdriver (not included). Make sure that they are securely installed.

2 Remove the screws at the back of the unit. Install the wall mounting screws into the back of the unit.

3 Hang the rear speaker by confirming the right/left of the rear speaker.

Check the Surround L/R on the rear of the rear speaker. "Surround R" is for the right, "Surround L" is for the left.



Parts and Controls

1 PAIR button	Press activate the pairing function between the main unit and the Surround.
2 indicator	<ul style="list-style-type: none"> Fast blink Rear Speaker in pairing mode Constant on Connected / Pairing successful Slow blink Connection / Pairing Failed
3 Surround L/R	Switch Surround left or right
4 AC ~	Connect an AC power cord.
5 Screws	Remove the screws then install the wall screws into the back of the Rear Speaker.

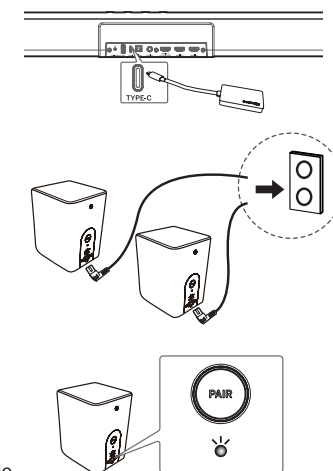
Pair up with the Rear Speakers

Note

- Surround should be installed within a 6m range of the main soundbar.
- When manually pair up Soundbar with Surround L, the Surround R must be powered off. When manually pair up Soundbar with Surround R, the Surround L must be powered off.
- Do not press the Pair button on the rear of the Surround except for manual pairing.

Automatic Pairing

- Insert the Dongle of wireless rear surround speaker.
- Connect the power cord to both Soundbar & Surround & connect both to a power source.
- Turn on the Soundbar. Both Soundbar & Surround R/L will connect automatically wirelessly.



Manual pairing

- If no audio from the Surround can be heard, manually pair up the Surround.
- Ensure that all the cables are well connected and the Soundbar is in Standby mode.
 - Press and hold the Pair button on the rear of the Surround for a few seconds. The Surround will enter the pairing mode and the Pair Indicator will blink quickly.
 - Turn on the Soundbar. Both Soundbar & Surround R/L will connect automatically wirelessly.
 - The Pair indicator on the Subwoofer or Surround will become solid when successful.
 - If the Pair indicator blinks, the wireless connection has failed. Unplug the cable of the Surround and then reconnect the main cable after 4 minutes. Repeat step 1 ~ 3.

Troubleshooting

If you experience any of the following difficulties while using the rear speakers, use this troubleshooting guide to help remedy the problem before requesting repairs.

No sound is heard from the rear speakers.

- Make sure the AC power cord (mains lead) of the rear speaker is connected properly.
- If the power indicator on the rear speaker does not light, try the following.
 - Make sure the AC power cord (mains lead) of the rear speaker is connected properly.

Sound skips or has noise.

- If there is a device nearby that generates electromagnetic waves, such as a wireless LAN or a microwave oven in use, locate the rear speakers and the Soundbar (U5120G/AX2106G) apart from that device.
- If there is an obstacle between the main unit of the Soundbar (U5120G/AX2106G) and the rear speakers, move or remove the obstacle.
- Locate the main unit of the Soundbar (U5120G/AX2106G) and the rear speakers as close as possible.
- Switch the network connection of the TV or Blu-ray Disc player from wireless to wired.

Specifications

Rear Speakers	
Power supply	AC 100-240 V~ 50/60 Hz
Power consumption (ON)	15 W
Power consumption (Standby)	0.5 W
Output power	8 W x 2
Frequency response	40 Hz - 20 kHz
Speaker impedance	8 Ω (2.5" X 2)
Dimension (W x H x D)	91 x 110.3x 114.3 mm
Weight	0.7 kg
5.8G wireless frequency range	5725 MHz ~ 5850 MHz
5.8G wireless maximum power	≤ 3dBm
Modulation	GFSK, π/4-DQPSK

Accessories

Rear speaker R (x1), Rear speaker L (x1), AC power cord (x2), Dongle (x1), Wall Mounting Screws (x2), Wall bracket (x2), Screw (x4), Dowel (x4), User manual (x1)

The specifications may be changed without prior notice to improve product performance. The images included in this guide may differ from the actual image and may change without notice.