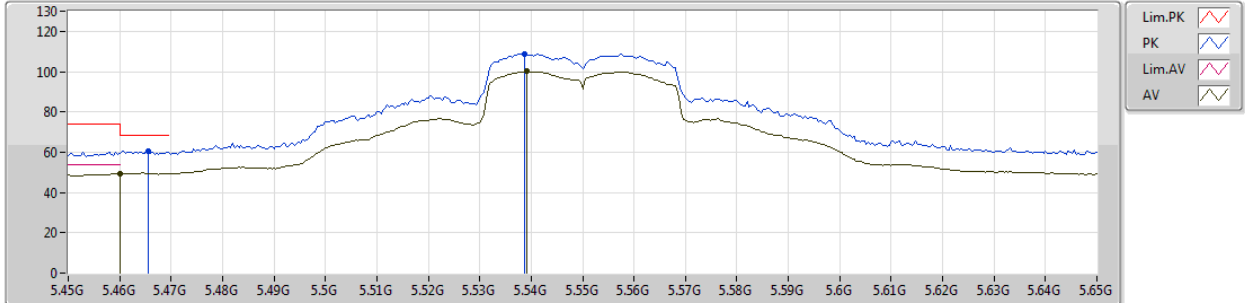




802.11ac VHT40_Nss1,(MCS0)_2TX

15/03/2019

5550MHz_TX



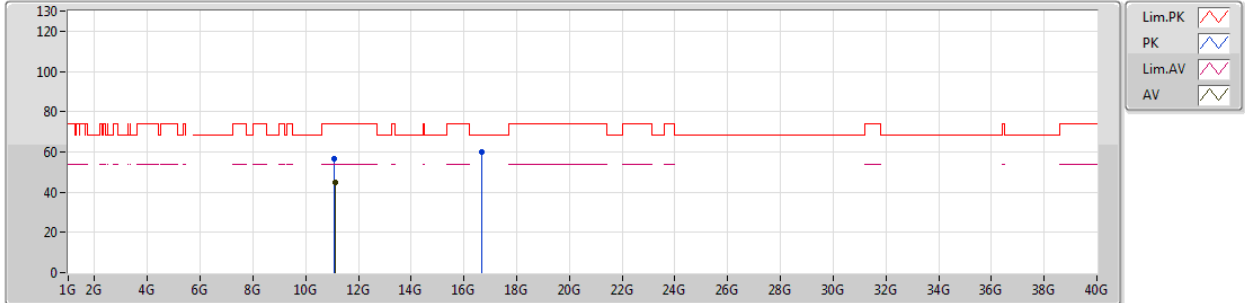
Type	Freq (Hz)	Level (dBuV/m)	Limit (dBuV/m)	Margin (dB)	Factor (dB)	Dist (m)	Condition	Azimuth (°)	Height (m)	Comments
AV	5.46G	49.35	54.00	-4.65	7.49	3	Horizontal	4	1.50	-
AV	5.5392G	100.12	Inf	-Inf	7.61	3	Horizontal	4	1.50	-
PK	5.4656G	60.65	68.20	-7.55	7.50	3	Horizontal	4	1.50	-
PK	5.5388G	108.80	Inf	-Inf	7.61	3	Horizontal	4	1.50	-



802.11ac VHT40_Nss1,(MCS0)_2TX

15/03/2019

5550MHz_TX



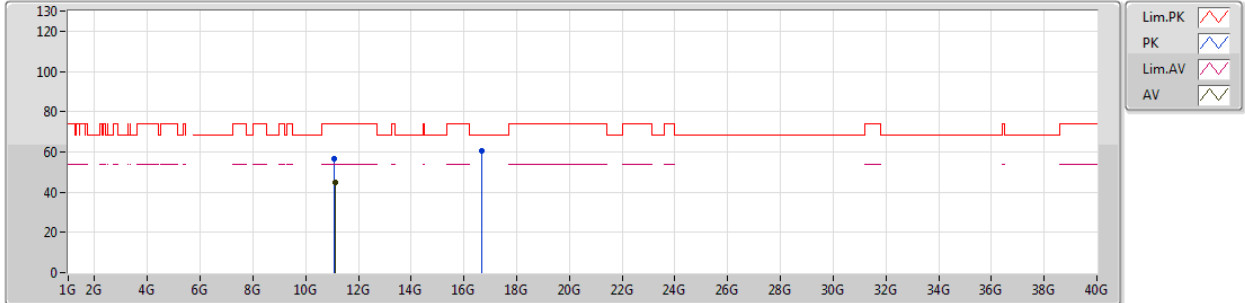
Type	Freq (Hz)	Level (dBuV/m)	Limit (dBuV/m)	Margin (dB)	Factor (dB)	Dist (m)	Condition	Azimuth (°)	Height (m)	Comments
AV	11.10936G	44.79	54.00	-9.21	16.84	3	Vertical	123	1.86	-
PK	11.09586G	56.38	74.00	-17.62	16.85	3	Vertical	123	1.86	-
PK	16.65804G	59.87	68.20	-8.33	16.46	3	Vertical	152	1.50	-



802.11ac VHT40_Nss1,(MCS0)_2TX

15/03/2019

5550MHz_TX



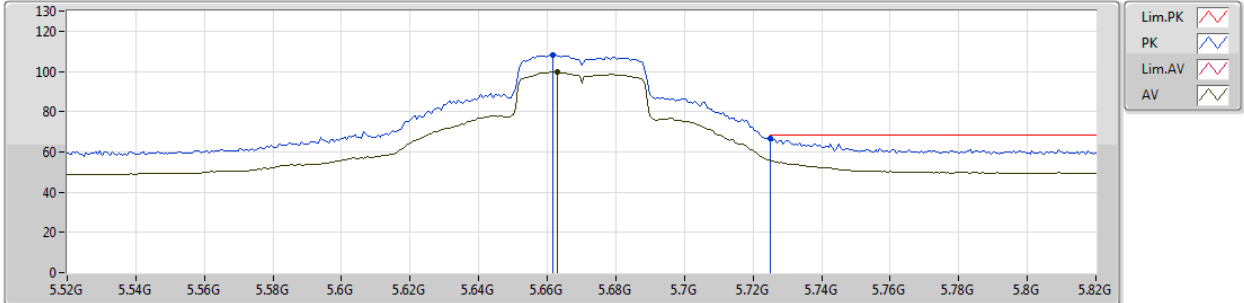
Type	Freq (Hz)	Level (dBuV/m)	Limit (dBuV/m)	Margin (dB)	Factor (dB)	Dist (m)	Condition	Azimuth (°)	Height (m)	Comments
AV	11.11396G	44.93	54.00	-9.07	16.83	3	Horizontal	347	1.81	-
PK	11.097G	56.62	74.00	-17.38	16.84	3	Horizontal	347	1.81	-
PK	16.65828G	60.28	68.20	-7.92	16.46	3	Horizontal	249	2.44	-



802.11ac VHT40_Nss1,(MCS0)_2TX

15/03/2019

5670MHz_TX



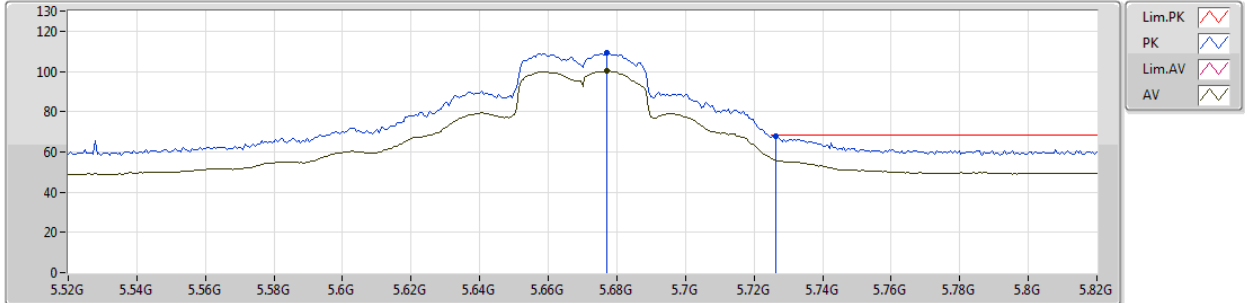
Type	Freq (Hz)	Level (dBuV/m)	Limit (dBuV/m)	Margin (dB)	Factor (dB)	Dist (m)	Condition	Azimuth (°)	Height (m)	Comments
AV	5.6628G	99.71	Inf	-Inf	7.86	3	Vertical	275	1.67	-
PK	5.6616G	108.22	Inf	-Inf	7.85	3	Vertical	275	1.67	-
PK	5.7252G	66.91	68.20	-1.29	7.99	3	Vertical	275	1.67	-



802.11ac VHT40_Nss1,(MCS0)_2TX

15/03/2019

5670MHz_TX



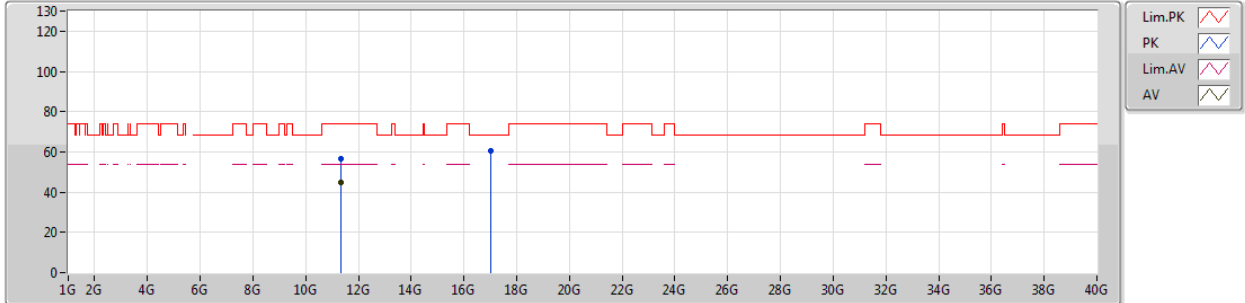
Type	Freq (Hz)	Level (dBuV/m)	Limit (dBuV/m)	Margin (dB)	Factor (dB)	Dist (m)	Condition	Azimuth (°)	Height (m)	Comments
AV	5.6772G	100.22	Inf	-Inf	7.89	3	Horizontal	8	1.30	-
PK	5.6772G	109.01	Inf	-Inf	7.89	3	Horizontal	8	1.30	-
PK	5.7264G	68.06	68.20	-0.14	7.99	3	Horizontal	8	1.30	-



802.11ac VHT40_Nss1,(MCS0)_2TX

15/03/2019

5670MHz_TX



Type	Freq (Hz)	Level (dBuV/m)	Limit (dBuV/m)	Margin (dB)	Factor (dB)	Dist (m)	Condition	Azimuth (°)	Height (m)	Comments
AV	11.33976G	44.91	54.00	-9.09	16.67	3	Vertical	333	2.15	-
PK	11.34024G	56.65	74.00	-17.35	16.67	3	Vertical	333	2.15	-
PK	17.01372G	60.55	68.20	-7.65	17.77	3	Vertical	38	1.50	-



802.11ac VHT40_Nss1,(MCS0)_2TX

15/03/2019

5670MHz_TX



Legend for plot:

- Lim.PK
- PK
- Lim.AV
- AV

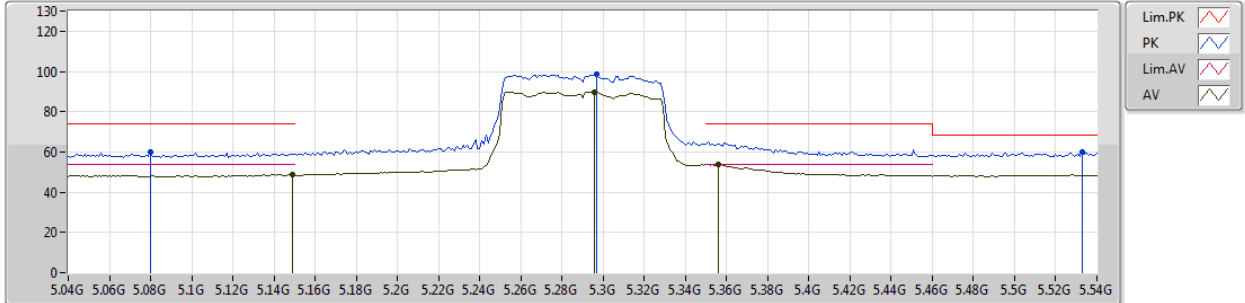
Type	Freq (Hz)	Level (dBuV/m)	Limit (dBuV/m)	Margin (dB)	Factor (dB)	Dist (m)	Condition	Azimuth (°)	Height (m)	Comments
AV	11.33682G	44.94	54.00	-9.06	16.68	3	Horizontal	99	1.38	-
PK	11.3361G	56.48	74.00	-17.52	16.68	3	Horizontal	99	1.38	-
PK	17.00718G	61.99	68.20	-6.21	17.72	3	Horizontal	244	2.67	-



802.11ac VHT80_Nss1,(MCS0)_2TX

15/03/2019

5290MHz_TX



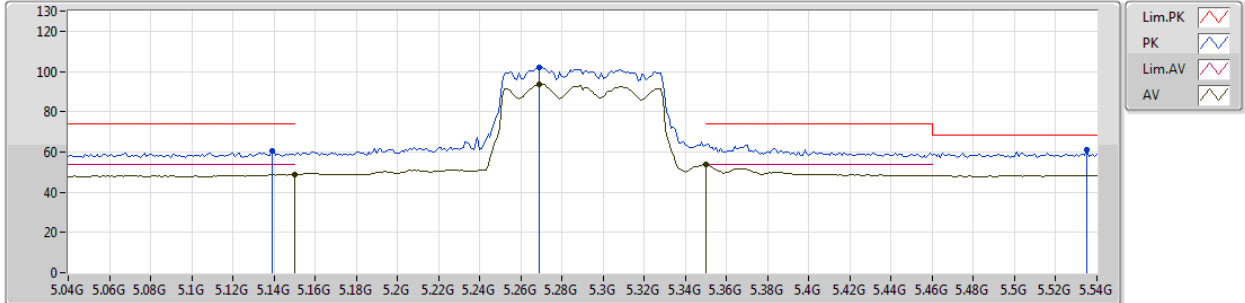
Type	Freq (Hz)	Level (dBuV/m)	Limit (dBuV/m)	Margin (dB)	Factor (dB)	Dist (m)	Condition	Azimuth (°)	Height (m)	Comments
AV	5.149G	48.61	54.00	-5.39	7.00	3	Vertical	277	1.69	-
AV	5.296G	89.86	Inf	-Inf	7.20	3	Vertical	277	1.69	-
AV	5.356G	53.74	54.00	-0.26	7.31	3	Vertical	277	1.69	-
PK	5.08G	60.17	74.00	-13.83	6.98	3	Vertical	277	1.69	-
PK	5.297G	98.57	Inf	-Inf	7.20	3	Vertical	277	1.69	-
PK	5.533G	59.86	68.20	-8.34	7.60	3	Vertical	277	1.69	-



802.11ac VHT80_Nss1,(MCS0)_2TX

15/03/2019

5290MHz_TX



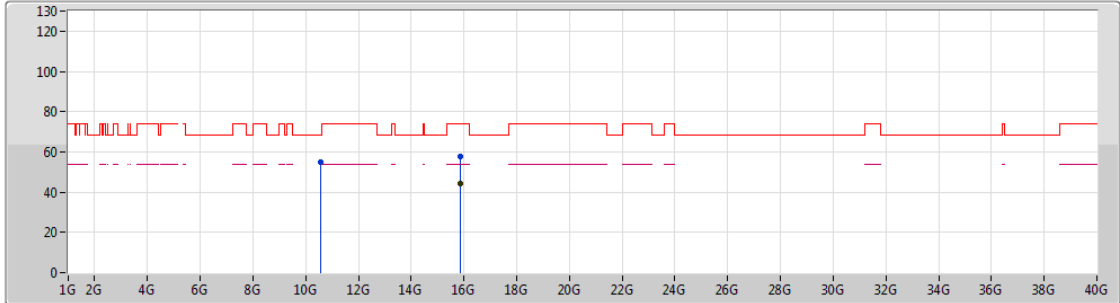
Type	Freq (Hz)	Level (dBuV/m)	Limit (dBuV/m)	Margin (dB)	Factor (dB)	Dist (m)	Condition	Azimuth (°)	Height (m)	Comments
AV	5.15G	48.82	54.00	-5.18	7.00	3	Horizontal	340	1.45	-
AV	5.269G	93.61	Inf	-Inf	7.15	3	Horizontal	340	1.45	-
AV	5.35G	53.58	54.00	-0.42	7.30	3	Horizontal	340	1.45	-
PK	5.139G	60.78	74.00	-13.22	6.99	3	Horizontal	340	1.45	-
PK	5.269G	102.22	Inf	-Inf	7.15	3	Horizontal	340	1.45	-
PK	5.535G	60.85	68.20	-7.35	7.60	3	Horizontal	340	1.45	-



802.11ac VHT80_Nss1,(MCS0)_2TX

15/03/2019

5290MHz_TX



Legend for the spectrum plot:

- Lim.PK
- PK
- Lim.AV
- AV

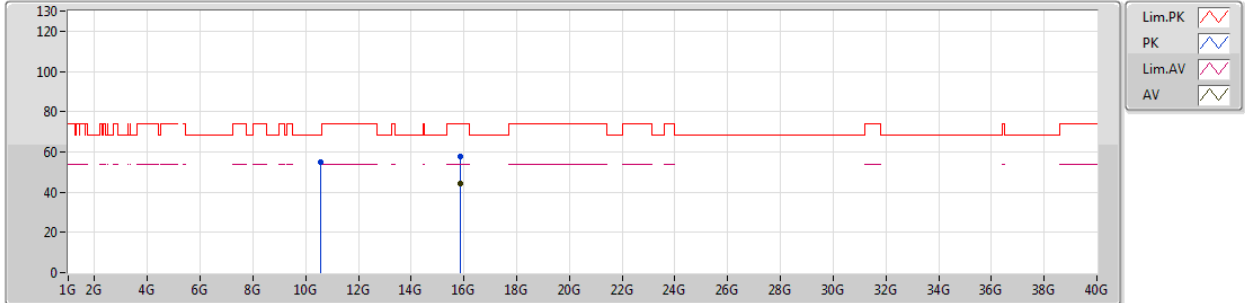
Type	Freq (Hz)	Level (dBuV/m)	Limit (dBuV/m)	Margin (dB)	Factor (dB)	Dist (m)	Condition	Azimuth (°)	Height (m)	Comments
AV	15.85896G	44.41	54.00	-9.59	14.60	3	Vertical	8	2.97	-
PK	10.57958G	55.16	68.20	-13.04	15.74	3	Vertical	262	1.55	-
PK	15.87516G	57.53	74.00	-16.47	14.55	3	Vertical	8	2.97	-



802.11ac VHT80_Nss1,(MCS0)_2TX

15/03/2019

5290MHz_TX



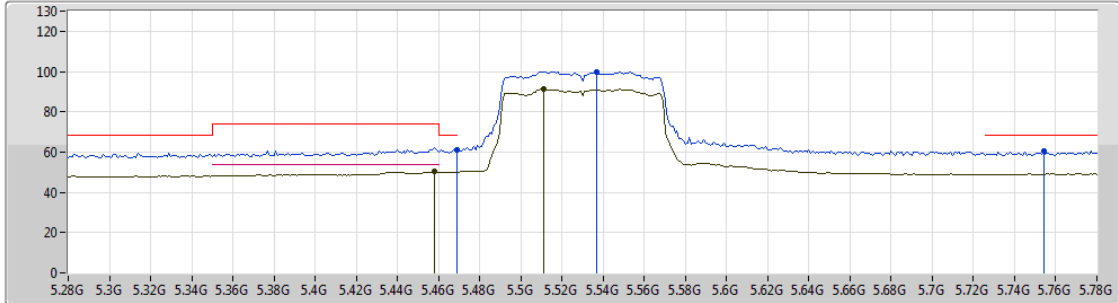
Type	Freq (Hz)	Level (dBuV/m)	Limit (dBuV/m)	Margin (dB)	Factor (dB)	Dist (m)	Condition	Azimuth (°)	Height (m)	Comments
AV	15.8559G	44.29	54.00	-9.71	14.60	3	Horizontal	229	2.16	-
PK	10.5758G	54.81	68.20	-13.39	15.74	3	Horizontal	101	1.91	-
PK	15.8634G	57.72	74.00	-16.28	14.59	3	Horizontal	229	2.16	-



802.11ac VHT80_Nss1,(MCS0)_2TX

15/03/2019

5530MHz_TX



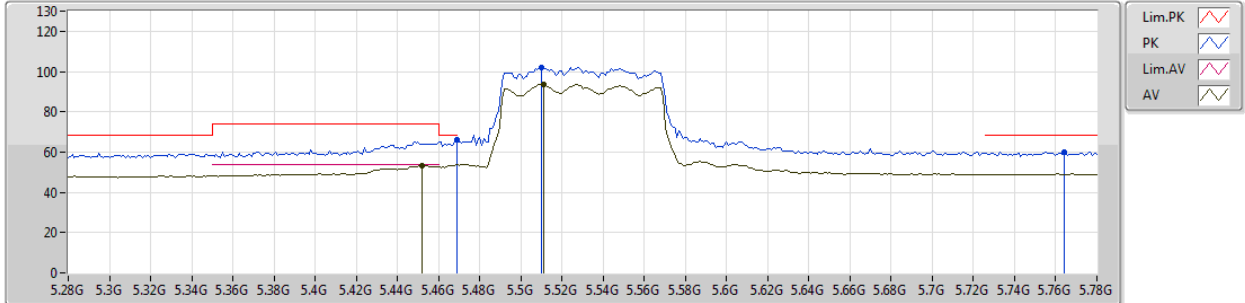
Type	Freq (Hz)	Level (dBuV/m)	Limit (dBuV/m)	Margin (dB)	Factor (dB)	Dist (m)	Condition	Azimuth (°)	Height (m)	Comments
AV	5.458G	50.26	54.00	-3.74	7.48	3	Vertical	274	1.69	-
AV	5.511G	91.35	Inf	-Inf	7.57	3	Vertical	274	1.69	-
PK	5.469G	61.18	68.20	-7.02	7.50	3	Vertical	274	1.69	-
PK	5.537G	99.98	Inf	-Inf	7.61	3	Vertical	274	1.69	-
PK	5.754G	60.37	68.20	-7.83	8.05	3	Vertical	274	1.69	-



802.11ac VHT80_Nss1,(MCS0)_2TX

15/03/2019

5530MHz_TX



Type	Freq (Hz)	Level (dBuV/m)	Limit (dBuV/m)	Margin (dB)	Factor (dB)	Dist (m)	Condition	Azimuth (°)	Height (m)	Comments
AV	5.452G	53.41	54.00	-0.59	7.48	3	Horizontal	358	1.30	-
AV	5.511G	93.45	Inf	-Inf	7.57	3	Horizontal	358	1.30	-
PK	5.469G	66.27	68.20	-1.93	7.50	3	Horizontal	358	1.30	-
PK	5.51G	101.96	Inf	-Inf	7.56	3	Horizontal	358	1.30	-
PK	5.764G	59.99	68.20	-8.21	8.06	3	Horizontal	358	1.30	-



802.11ac VHT80_Nss1,(MCS0)_2TX

15/03/2019

5530MHz_TX



Lim.PK
 PK
 Lim.AV
 AV

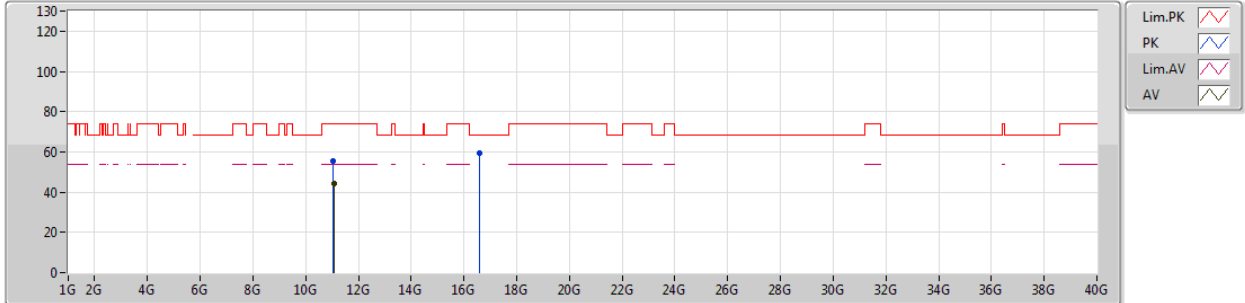
Type	Freq (Hz)	Level (dBuV/m)	Limit (dBuV/m)	Margin (dB)	Factor (dB)	Dist (m)	Condition	Azimuth (°)	Height (m)	Comments
AV	11.05448G	44.20	54.00	-9.80	16.28	3	Vertical	3	2.12	-
PK	11.0615G	55.67	74.00	-18.33	16.27	3	Vertical	3	2.12	-
PK	16.59414G	58.90	68.20	-9.30	16.24	3	Vertical	18	1.72	-



802.11ac VHT80_Nss1,(MCS0)_2TX

15/03/2019

5530MHz_TX



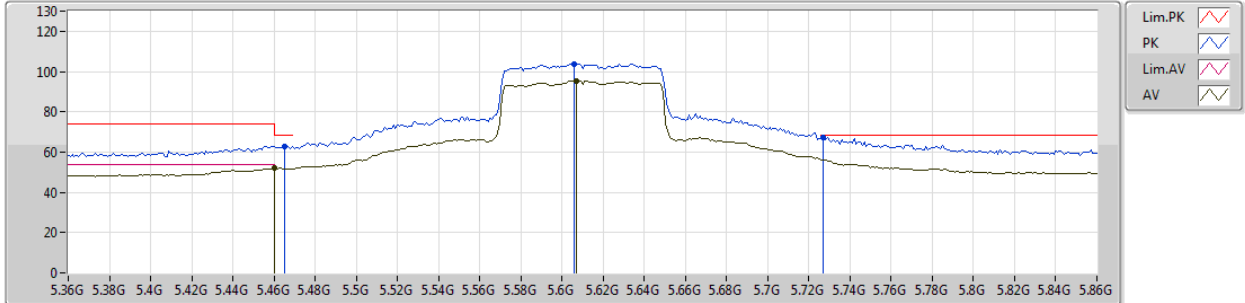
Type	Freq (Hz)	Level (dBuV/m)	Limit (dBuV/m)	Margin (dB)	Factor (dB)	Dist (m)	Condition	Azimuth (°)	Height (m)	Comments
AV	11.06462G	44.16	54.00	-9.84	16.27	3	Horizontal	307	1.78	-
PK	11.05262G	55.63	74.00	-18.37	16.29	3	Horizontal	307	1.78	-
PK	16.5936G	59.23	68.20	-8.97	16.24	3	Horizontal	270	1.50	-



802.11ac VHT80_Nss1,(MCS0)_2TX

15/03/2019

5610MHz_TX



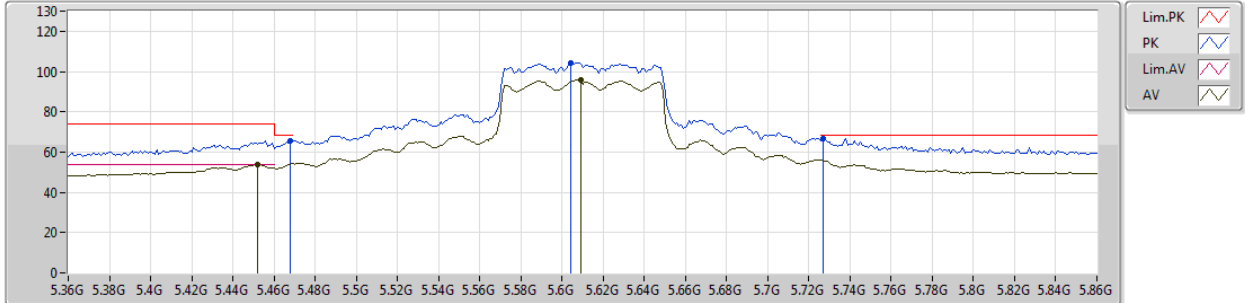
Type	Freq (Hz)	Level (dBuV/m)	Limit (dBuV/m)	Margin (dB)	Factor (dB)	Dist (m)	Condition	Azimuth (°)	Height (m)	Comments
AV	5.46G	51.97	54.00	-2.03	7.49	3	Vertical	286	1.84	-
AV	5.607G	95.48	Inf	-Inf	7.74	3	Vertical	286	1.84	-
PK	5.465G	62.73	68.20	-5.47	7.50	3	Vertical	286	1.84	-
PK	5.606G	103.92	Inf	-Inf	7.74	3	Vertical	286	1.84	-
PK	5.727G	67.12	68.20	-1.08	7.99	3	Vertical	286	1.84	-



802.11ac VHT80_Nss1,(MCS0)_2TX

15/03/2019

5610MHz_TX



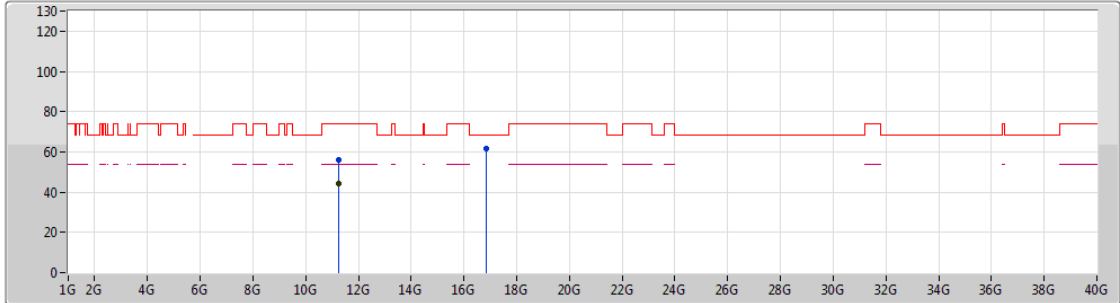
Type	Freq (Hz)	Level (dBuV/m)	Limit (dBuV/m)	Margin (dB)	Factor (dB)	Dist (m)	Condition	Azimuth (°)	Height (m)	Comments
AV	5.452G	53.76	54.00	-0.24	7.48	3	Horizontal	360	1.24	-
AV	5.609G	95.70	Inf	-Inf	7.74	3	Horizontal	360	1.24	-
PK	5.468G	65.42	68.20	-2.78	7.50	3	Horizontal	360	1.24	-
PK	5.604G	104.21	Inf	-Inf	7.73	3	Horizontal	360	1.24	-
PK	5.727G	66.60	68.20	-1.60	7.99	3	Horizontal	360	1.24	-



802.11ac VHT80_Nss1,(MCS0)_2TX

15/03/2019

5610MHz_TX



Legend for plot:

- Lim.PK
- PK
- Lim.AV
- AV

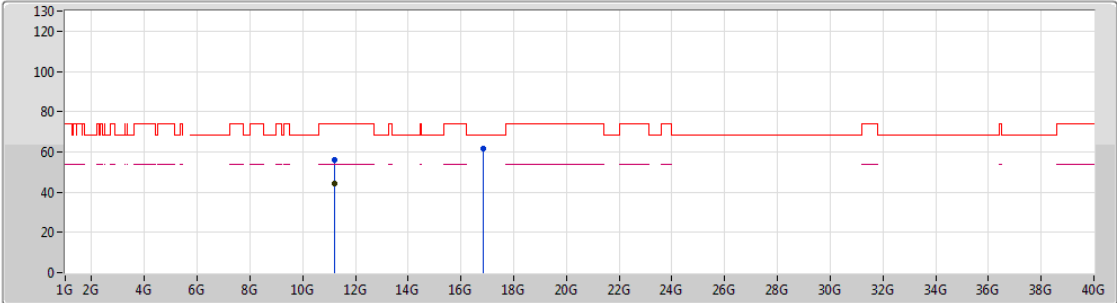
Type	Freq (Hz)	Level (dBuV/m)	Limit (dBuV/m)	Margin (dB)	Factor (dB)	Dist (m)	Condition	Azimuth (°)	Height (m)	Comments
AV	11.23098G	44.07	54.00	-9.93	16.12	3	Vertical	91	2.35	-
PK	11.23392G	56.22	74.00	-17.78	16.11	3	Vertical	91	2.35	-
PK	16.83642G	61.48	68.20	-6.72	17.09	3	Vertical	220	1.50	-



802.11ac VHT80_Nss1,(MCS0)_2TX

15/03/2019

5610MHz_TX



Legend for the spectrum plot:

- Lim.PK
- PK
- Lim.AV
- AV

Type	Freq (Hz)	Level (dBuV/m)	Limit (dBuV/m)	Margin (dB)	Factor (dB)	Dist (m)	Condition	Azimuth (°)	Height (m)	Comments
AV	11.2185G	44.16	54.00	-9.84	16.12	3	Horizontal	291	2.41	-
PK	11.21178G	56.19	74.00	-17.81	16.13	3	Horizontal	291	2.41	-
PK	16.8318G	61.61	68.20	-6.59	17.07	3	Horizontal	236	1.90	-



Summary

Mode	Result	Type	Freq (Hz)	Level (dBuV/m)	Limit (dBuV/m)	Margin (dB)	Factor (dB)	Dist (m)	Condition	Azimuth (°)	Height (m)	Comments
5.25-5.35GHz	-	-	-	-	-	-	-	-	-	-	-	-
802.11ac VHT20-BF_Nss1,(MCS0)_2TX	Pass	PK	10.51801G	66.61	68.20	-1.59	12.98	3	Vertical	159	2.74	-
802.11ac VHT40-BF_Nss1,(MCS0)_2TX	Pass	PK	5.35G	73.52	74.00	-0.48	4.32	3	Horizontal	65	1.50	-
802.11ac VHT80-BF_Nss1,(MCS0)_2TX	Pass	AV	5.35G	51.04	54.00	-2.96	4.32	3	Vertical	278	1.87	-
5.47-5.725GHz	-	-	-	-	-	-	-	-	-	-	-	-
802.11ac VHT20-BF_Nss1,(MCS0)_2TX	Pass	PK	5.4698G	67.52	68.20	-0.68	4.47	3	Vertical	353	1.50	-
802.11ac VHT40-BF_Nss1,(MCS0)_2TX	Pass	PK	5.4688G	68.08	68.20	-0.12	4.47	3	Vertical	263	1.91	-
802.11ac VHT80-BF_Nss1,(MCS0)_2TX	Pass	PK	5.466G	67.82	68.20	-0.38	4.46	3	Vertical	355	1.11	-



Result

Mode	Result	Type	Freq (Hz)	Level (dBuV/m)	Limit (dBuV/m)	Margin (dB)	Factor (dB)	Dist (m)	Condition	Azimuth (°)	Height (m)	Comments
802.11ac VHT20-BF_Nss1,(MCS0)_2TX	-	-	-	-	-	-	-	-	-	-	-	-
5260MHz	Pass	AV	5.1418G	44.27	54.00	-9.73	4.08	3	Vertical	274	1.94	-
5260MHz	Pass	AV	5.2552G	97.84	Inf	-Inf	4.21	3	Vertical	274	1.94	-
5260MHz	Pass	AV	5.3566G	43.23	54.00	-10.77	4.32	3	Vertical	274	1.94	-
5260MHz	Pass	PK	5.143G	55.18	74.00	-18.82	4.09	3	Vertical	274	1.94	-
5260MHz	Pass	PK	5.2666G	106.79	Inf	-Inf	4.23	3	Vertical	274	1.94	-
5260MHz	Pass	PK	5.359G	54.69	74.00	-19.31	4.34	3	Vertical	274	1.94	-
5260MHz	Pass	AV	5.1178G	43.66	54.00	-10.34	4.05	3	Horizontal	87	1.37	-
5260MHz	Pass	AV	5.263G	96.93	Inf	-Inf	4.22	3	Horizontal	87	1.37	-
5260MHz	Pass	AV	5.3524G	42.90	54.00	-11.10	4.32	3	Horizontal	87	1.37	-
5260MHz	Pass	PK	5.1112G	58.49	74.00	-15.51	4.04	3	Horizontal	87	1.37	-
5260MHz	Pass	PK	5.2588G	109.80	Inf	-Inf	4.22	3	Horizontal	87	1.37	-
5260MHz	Pass	PK	5.4016G	56.91	74.00	-17.09	4.39	3	Horizontal	87	1.37	-
5260MHz	Pass	PK	10.51801G	66.61	68.20	-1.59	12.98	3	Vertical	159	2.74	-
5260MHz	Pass	PK	10.51905G	63.93	68.20	-4.27	12.98	3	Horizontal	240	1.25	-
5300MHz	Pass	AV	5.296G	97.99	Inf	-Inf	6.93	3	Vertical	331	1.60	-
5300MHz	Pass	AV	5.386G	47.82	54.00	-6.18	7.21	3	Vertical	331	1.60	-
5300MHz	Pass	PK	5.2956G	106.32	Inf	-Inf	6.93	3	Vertical	331	1.60	-
5300MHz	Pass	PK	5.36G	58.98	74.00	-15.02	7.12	3	Vertical	331	1.60	-
5300MHz	Pass	AV	5.2952G	101.02	Inf	-Inf	6.93	3	Horizontal	352	1.04	-
5300MHz	Pass	AV	5.3632G	47.95	54.00	-6.05	7.14	3	Horizontal	352	1.04	-
5300MHz	Pass	PK	5.2952G	109.87	Inf	-Inf	6.93	3	Horizontal	352	1.04	-
5300MHz	Pass	PK	5.3836G	59.60	74.00	-14.40	7.21	3	Horizontal	352	1.04	-
5300MHz	Pass	AV	10.60028G	49.69	54.00	-4.31	16.38	3	Vertical	209	1.40	-
5300MHz	Pass	PK	10.59804G	62.61	68.20	-5.59	16.38	3	Vertical	209	1.40	-
5300MHz	Pass	AV	10.60029G	47.44	54.00	-6.56	16.38	3	Horizontal	0	2.04	-
5300MHz	Pass	PK	10.59984G	57.95	68.20	-10.25	16.38	3	Horizontal	0	2.04	-
5320MHz	Pass	AV	5.3182G	98.18	Inf	-Inf	6.99	3	Vertical	333	1.48	-
5320MHz	Pass	AV	5.35G	49.53	54.00	-4.47	7.09	3	Vertical	333	1.48	-
5320MHz	Pass	PK	5.3152G	106.64	Inf	-Inf	6.97	3	Vertical	333	1.48	-
5320MHz	Pass	PK	5.3526G	61.33	74.00	-12.67	7.11	3	Vertical	333	1.48	-
5320MHz	Pass	AV	5.318G	101.52	Inf	-Inf	6.99	3	Horizontal	343	1.01	-
5320MHz	Pass	AV	5.353G	49.25	54.00	-4.75	7.11	3	Horizontal	343	1.01	-
5320MHz	Pass	PK	5.3224G	110.21	Inf	-Inf	6.99	3	Horizontal	343	1.01	-
5320MHz	Pass	PK	5.355G	62.07	74.00	-11.93	7.11	3	Horizontal	343	1.01	-
5320MHz	Pass	AV	10.6439G	49.34	54.00	-4.66	16.46	3	Vertical	208	1.34	-
5320MHz	Pass	PK	10.64384G	63.96	74.00	-10.04	16.46	3	Vertical	208	1.34	-
5320MHz	Pass	AV	10.64102G	48.08	54.00	-5.92	16.44	3	Horizontal	233	1.18	-
5320MHz	Pass	PK	10.63664G	59.78	74.00	-14.22	16.44	3	Horizontal	233	1.18	-
5500MHz	Pass	AV	5.4596G	45.05	54.00	-8.95	4.46	3	Vertical	353	1.50	-
5500MHz	Pass	AV	5.5022G	96.58	Inf	-Inf	4.50	3	Vertical	353	1.50	-
5500MHz	Pass	PK	5.4698G	67.52	68.20	-0.68	4.47	3	Vertical	353	1.50	-
5500MHz	Pass	PK	5.5038G	108.22	Inf	-Inf	4.51	3	Vertical	353	1.50	-
5500MHz	Pass	AV	5.453G	45.17	54.00	-8.83	4.45	3	Horizontal	6	1.50	-
5500MHz	Pass	AV	5.5078G	98.20	Inf	-Inf	4.52	3	Horizontal	6	1.50	-
5500MHz	Pass	PK	5.4696G	60.11	68.20	-8.09	4.47	3	Horizontal	6	1.50	-
5500MHz	Pass	PK	5.5072G	109.33	Inf	-Inf	4.52	3	Horizontal	6	1.50	-
5500MHz	Pass	AV	11.00012G	48.30	54.00	-5.70	15.98	3	Vertical	158	2.43	-



RSE TX above 1GHz Result_ Beamforming

Appendix D.2

Mode	Result	Type	Freq (Hz)	Level (dBuV/m)	Limit (dBuV/m)	Margin (dB)	Factor (dB)	Dist (m)	Condition	Azimuth (°)	Height (m)	Comments
5500MHz	Pass	PK	11.0003G	58.76	74.00	-15.24	15.98	3	Vertical	158	2.43	-
5500MHz	Pass	AV	11G	46.98	54.00	-7.02	15.98	3	Horizontal	226	1.74	-
5500MHz	Pass	PK	10.99976G	58.19	74.00	-15.81	15.98	3	Horizontal	226	1.74	-
5580MHz	Pass	AV	5.4558G	43.89	54.00	-10.11	4.45	3	Vertical	288	1.80	-
5580MHz	Pass	AV	5.577G	98.03	Inf	-Inf	4.66	3	Vertical	288	1.80	-
5580MHz	Pass	PK	5.4612G	55.83	68.20	-12.37	4.46	3	Vertical	288	1.80	-
5580MHz	Pass	PK	5.583G	107.01	Inf	-Inf	4.67	3	Vertical	288	1.80	-
5580MHz	Pass	PK	5.7258G	55.15	68.20	-13.05	4.96	3	Vertical	288	1.80	-
5580MHz	Pass	AV	5.4468G	43.56	54.00	-10.44	4.44	3	Horizontal	1	1.26	-
5580MHz	Pass	AV	5.5758G	93.26	Inf	-Inf	4.66	3	Horizontal	1	1.26	-
5580MHz	Pass	PK	5.43G	63.83	74.00	-10.17	4.42	3	Horizontal	1	1.26	-
5580MHz	Pass	PK	5.574G	108.00	Inf	-Inf	4.65	3	Horizontal	1	1.26	-
5580MHz	Pass	PK	5.73G	55.36	68.20	-12.84	4.96	3	Horizontal	1	1.26	-
5580MHz	Pass	AV	11.15454G	44.62	54.00	-9.38	13.89	3	Vertical	300	1.50	-
5580MHz	Pass	PK	11.15652G	55.69	74.00	-18.31	13.89	3	Vertical	300	1.50	-
5580MHz	Pass	AV	11.16192G	45.54	54.00	-8.46	13.88	3	Horizontal	224	1.48	-
5580MHz	Pass	PK	11.15766G	56.42	74.00	-17.58	13.89	3	Horizontal	224	1.48	-
5700MHz	Pass	AV	5.6952G	95.99	Inf	-Inf	4.90	3	Vertical	0	1.88	-
5700MHz	Pass	PK	5.6948G	106.15	Inf	-Inf	4.90	3	Vertical	0	1.88	-
5700MHz	Pass	PK	5.7256G	66.79	68.20	-1.41	4.96	3	Vertical	0	1.88	-
5700MHz	Pass	AV	5.6916G	101.69	Inf	-Inf	4.90	3	Horizontal	11	1.47	-
5700MHz	Pass	PK	5.692G	110.03	Inf	-Inf	4.90	3	Horizontal	11	1.47	-
5700MHz	Pass	PK	5.7252G	61.92	68.20	-6.28	4.96	3	Horizontal	11	1.47	-
5700MHz	Pass	AV	11.39976G	46.35	54.00	-7.65	13.66	3	Vertical	159	1.48	-
5700MHz	Pass	PK	11.39802G	57.43	74.00	-16.57	13.66	3	Vertical	159	1.48	-
5700MHz	Pass	AV	11.39958G	50.01	54.00	-3.99	13.66	3	Horizontal	279	1.56	-
5700MHz	Pass	PK	11.39046G	61.01	74.00	-12.99	13.66	3	Horizontal	279	1.56	-
802.11ac VHT40-BF_Nss1,(MCS0)_2TX	-	-	-	-	-	-	-	-	-	-	-	-
5270MHz	Pass	AV	5.2652G	98.71	Inf	-Inf	4.23	3	Vertical	260	1.73	-
5270MHz	Pass	AV	5.3536G	45.42	54.00	-8.58	4.32	3	Vertical	260	1.73	-
5270MHz	Pass	PK	5.2816G	106.32	Inf	-Inf	4.24	3	Vertical	260	1.73	-
5270MHz	Pass	PK	5.3536G	58.21	74.00	-15.79	4.32	3	Vertical	260	1.73	-
5270MHz	Pass	AV	5.2636G	99.46	Inf	-Inf	4.23	3	Horizontal	60	1.50	-
5270MHz	Pass	AV	5.3524G	44.65	54.00	-9.35	4.32	3	Horizontal	60	1.50	-
5270MHz	Pass	PK	5.2644G	111.36	Inf	-Inf	4.23	3	Horizontal	60	1.50	-
5270MHz	Pass	PK	5.3596G	59.07	74.00	-14.93	4.34	3	Horizontal	60	1.50	-
5270MHz	Pass	PK	10.5362G	64.28	68.20	-3.92	14.78	3	Vertical	200	2.97	-
5270MHz	Pass	PK	10.53875G	61.38	74.00	-12.62	14.78	3	Horizontal	325	1.33	-
5310MHz	Pass	AV	5.2936G	97.01	Inf	-Inf	4.26	3	Vertical	269	1.46	-
5310MHz	Pass	AV	5.3536G	53.46	54.00	-0.54	4.32	3	Vertical	269	1.46	-
5310MHz	Pass	PK	5.2932G	108.68	Inf	-Inf	4.26	3	Vertical	269	1.46	-
5310MHz	Pass	PK	5.3548G	73.40	74.00	-0.60	4.32	3	Vertical	269	1.46	-
5310MHz	Pass	AV	5.2968G	94.43	Inf	-Inf	4.26	3	Horizontal	65	1.50	-
5310MHz	Pass	AV	5.3516G	53.23	54.00	-0.77	4.32	3	Horizontal	65	1.50	-
5310MHz	Pass	PK	5.2964G	108.03	Inf	-Inf	4.26	3	Horizontal	65	1.50	-
5310MHz	Pass	PK	5.35G	73.52	74.00	-0.48	4.32	3	Horizontal	65	1.50	-
5310MHz	Pass	AV	10.62G	51.74	54.00	-2.26	15.00	3	Vertical	151	2.71	-
5310MHz	Pass	PK	10.61771G	67.08	74.00	-6.92	14.99	3	Vertical	151	2.71	-
5310MHz	Pass	AV	10.62G	49.20	54.00	-4.80	15.00	3	Horizontal	4	1.25	-



RSE TX above 1GHz Result_ Beamforming

Appendix D.2

Mode	Result	Type	Freq (Hz)	Level (dBuV/m)	Limit (dBuV/m)	Margin (dB)	Factor (dB)	Dist (m)	Condition	Azimuth (°)	Height (m)	Comments
5310MHz	Pass	PK	10.62045G	61.63	74.00	-12.37	15.01	3	Horizontal	4	1.25	-
5510MHz	Pass	AV	5.4596G	49.20	54.00	-4.80	4.46	3	Vertical	263	1.91	-
5510MHz	Pass	AV	5.4952G	93.86	Inf	-Inf	4.50	3	Vertical	263	1.91	-
5510MHz	Pass	PK	5.4688G	68.08	68.20	-0.12	4.47	3	Vertical	263	1.91	-
5510MHz	Pass	PK	5.504G	102.44	Inf	-Inf	4.51	3	Vertical	263	1.91	-
5510MHz	Pass	AV	5.46G	44.62	54.00	-9.38	4.46	3	Horizontal	357	1.47	-
5510MHz	Pass	AV	5.518G	94.13	Inf	-Inf	4.54	3	Horizontal	357	1.47	-
5510MHz	Pass	PK	5.4684G	58.33	68.20	-9.87	4.47	3	Horizontal	357	1.47	-
5510MHz	Pass	PK	5.5196G	103.26	Inf	-Inf	4.54	3	Horizontal	357	1.47	-
5510MHz	Pass	AV	11.02G	46.76	54.00	-7.24	14.01	3	Vertical	140	2.16	-
5510MHz	Pass	PK	11.02348G	56.39	74.00	-17.61	14.01	3	Vertical	140	2.16	-
5510MHz	Pass	AV	11.02006G	47.34	54.00	-6.66	14.01	3	Horizontal	244	1.50	-
5510MHz	Pass	PK	11.01958G	55.73	74.00	-18.27	14.01	3	Horizontal	244	1.50	-
5550MHz	Pass	AV	5.4592G	44.95	54.00	-9.05	4.46	3	Vertical	342	1.50	-
5550MHz	Pass	AV	5.5396G	98.03	Inf	-Inf	4.59	3	Vertical	342	1.50	-
5550MHz	Pass	PK	5.4672G	60.07	68.20	-8.13	4.47	3	Vertical	342	1.50	-
5550MHz	Pass	PK	5.5452G	106.03	Inf	-Inf	4.59	3	Vertical	342	1.50	-
5550MHz	Pass	AV	5.4588G	44.13	54.00	-9.87	4.46	3	Horizontal	5	1.50	-
5550MHz	Pass	AV	5.5444G	97.64	Inf	-Inf	4.59	3	Horizontal	5	1.50	-
5550MHz	Pass	PK	5.4688G	55.25	68.20	-12.95	4.47	3	Horizontal	5	1.50	-
5550MHz	Pass	PK	5.5384G	105.15	Inf	-Inf	4.58	3	Horizontal	5	1.50	-
5550MHz	Pass	AV	11.08542G	46.06	54.00	-7.94	13.95	3	Vertical	141	2.12	-
5550MHz	Pass	PK	11.09922G	56.86	74.00	-17.14	13.94	3	Vertical	141	2.12	-
5550MHz	Pass	AV	11.10006G	45.85	54.00	-8.15	13.94	3	Horizontal	239	2.99	-
5550MHz	Pass	PK	11.09994G	56.82	74.00	-17.18	13.94	3	Horizontal	239	2.99	-
5670MHz	Pass	AV	5.6544G	97.54	Inf	-Inf	4.82	3	Vertical	335	1.69	-
5670MHz	Pass	PK	5.6724G	103.71	Inf	-Inf	4.85	3	Vertical	335	1.69	-
5670MHz	Pass	PK	5.7258G	66.04	68.20	-2.16	4.96	3	Vertical	335	1.69	-
5670MHz	Pass	AV	5.6532G	97.48	Inf	-Inf	4.81	3	Horizontal	357	1.43	-
5670MHz	Pass	PK	5.6622G	107.49	Inf	-Inf	4.83	3	Horizontal	357	1.43	-
5670MHz	Pass	PK	5.727G	62.32	68.20	-5.88	4.96	3	Horizontal	357	1.43	-
5670MHz	Pass	AV	11.32566G	46.52	54.00	-7.48	15.70	3	Vertical	146	1.62	-
5670MHz	Pass	PK	11.34954G	55.80	74.00	-18.20	15.68	3	Vertical	146	1.62	-
5670MHz	Pass	AV	11.33982G	45.77	54.00	-8.23	15.69	3	Horizontal	256	2.63	-
5670MHz	Pass	PK	11.33406G	57.02	74.00	-16.98	15.69	3	Horizontal	256	2.63	-
802.11ac VHT80-BF_Nss1,(MCS0)_2TX	-	-	-	-	-	-	-	-	-	-	-	-
5290MHz	Pass	AV	5.062G	44.63	54.00	-9.37	3.99	3	Vertical	278	1.87	-
5290MHz	Pass	AV	5.265G	91.46	Inf	-Inf	4.23	3	Vertical	278	1.87	-
5290MHz	Pass	AV	5.35G	51.04	54.00	-2.96	4.32	3	Vertical	278	1.87	-
5290MHz	Pass	PK	5.069G	56.32	74.00	-17.68	3.99	3	Vertical	278	1.87	-
5290MHz	Pass	PK	5.267G	98.52	Inf	-Inf	4.23	3	Vertical	278	1.87	-
5290MHz	Pass	PK	5.352G	61.39	74.00	-12.61	4.32	3	Vertical	278	1.87	-
5290MHz	Pass	AV	5.132G	44.64	54.00	-9.36	4.07	3	Horizontal	63	1.50	-
5290MHz	Pass	AV	5.254G	92.25	Inf	-Inf	4.21	3	Horizontal	63	1.50	-
5290MHz	Pass	AV	5.351G	50.71	54.00	-3.29	4.32	3	Horizontal	63	1.50	-
5290MHz	Pass	PK	5.062G	55.62	74.00	-18.38	3.99	3	Horizontal	63	1.50	-
5290MHz	Pass	PK	5.253G	99.38	Inf	-Inf	4.21	3	Horizontal	63	1.50	-
5290MHz	Pass	PK	5.485G	55.76	68.20	-12.44	4.48	3	Horizontal	63	1.50	-
5290MHz	Pass	AV	10.57992G	47.05	54.00	-6.95	14.89	3	Vertical	64	1.53	-



RSE TX above 1GHz Result_ Beamforming

Appendix D.2

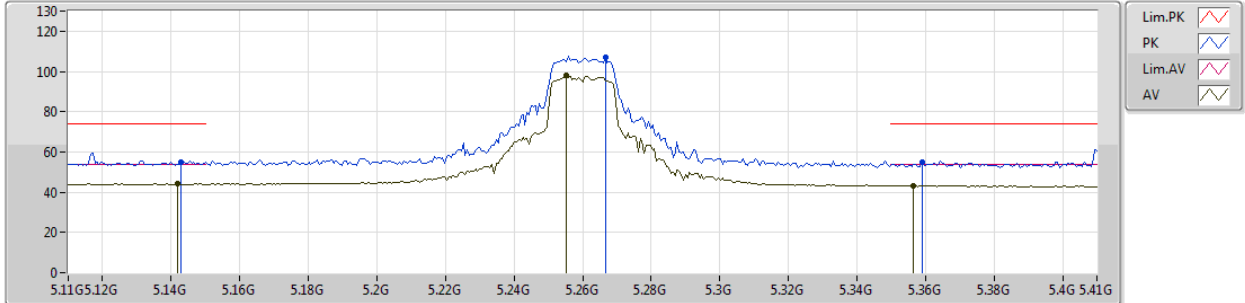
Mode	Result	Type	Freq (Hz)	Level (dBuV/m)	Limit (dBuV/m)	Margin (dB)	Factor (dB)	Dist (m)	Condition	Azimuth (°)	Height (m)	Comments
5290MHz	Pass	PK	10.58024G	54.92	74.00	-19.08	14.89	3	Vertical	64	1.53	-
5290MHz	Pass	AV	10.57996G	48.35	54.00	-5.65	14.89	3	Horizontal	321	1.50	-
5290MHz	Pass	PK	10.58G	55.68	74.00	-18.32	14.89	3	Horizontal	321	1.50	-
5530MHz	Pass	AV	5.456G	52.31	54.00	-1.69	4.45	3	Vertical	344	1.57	-
5530MHz	Pass	AV	5.502G	92.77	Inf	-Inf	4.50	3	Vertical	344	1.57	-
5530MHz	Pass	PK	5.468G	65.48	68.20	-2.72	4.47	3	Vertical	344	1.57	-
5530MHz	Pass	PK	5.502G	103.61	Inf	-Inf	4.50	3	Vertical	344	1.57	-
5530MHz	Pass	PK	5.78G	55.62	68.20	-12.58	5.06	3	Vertical	344	1.57	-
5530MHz	Pass	AV	5.433G	48.51	54.00	-5.49	4.42	3	Horizontal	355	1.05	-
5530MHz	Pass	AV	5.498G	90.34	Inf	-Inf	4.50	3	Horizontal	355	1.05	-
5530MHz	Pass	PK	5.467G	65.84	68.20	-2.36	4.47	3	Horizontal	355	1.05	-
5530MHz	Pass	PK	5.498G	101.81	Inf	-Inf	4.50	3	Horizontal	355	1.05	-
5530MHz	Pass	PK	5.775G	56.64	68.20	-11.56	5.07	3	Horizontal	355	1.05	-
5530MHz	Pass	AV	11.06006G	45.97	54.00	-8.03	13.97	3	Vertical	191	3.00	-
5530MHz	Pass	PK	11.04554G	55.76	74.00	-18.24	14.00	3	Vertical	191	3.00	-
5530MHz	Pass	AV	11.05982G	46.47	54.00	-7.53	13.97	3	Horizontal	247	1.50	-
5530MHz	Pass	PK	11.05358G	55.16	74.00	-18.84	13.98	3	Horizontal	247	1.50	-
5610MHz	Pass	AV	5.454G	48.80	54.00	-5.20	4.45	3	Vertical	355	1.11	-
5610MHz	Pass	AV	5.577G	94.06	Inf	-Inf	4.66	3	Vertical	355	1.11	-
5610MHz	Pass	PK	5.466G	67.82	68.20	-0.38	4.46	3	Vertical	355	1.11	-
5610MHz	Pass	PK	5.574G	105.57	Inf	-Inf	4.65	3	Vertical	355	1.11	-
5610MHz	Pass	PK	5.774G	63.96	68.20	-4.24	5.06	3	Vertical	355	1.11	-
5610MHz	Pass	AV	5.459G	46.02	54.00	-7.98	4.46	3	Horizontal	1	1.50	-
5610MHz	Pass	AV	5.574G	96.31	Inf	-Inf	4.65	3	Horizontal	1	1.50	-
5610MHz	Pass	PK	5.466G	59.04	68.20	-9.16	4.46	3	Horizontal	1	1.50	-
5610MHz	Pass	PK	5.621G	104.13	Inf	-Inf	4.75	3	Horizontal	1	1.50	-
5610MHz	Pass	PK	5.728G	58.53	68.20	-9.67	4.96	3	Horizontal	1	1.50	-
5610MHz	Pass	AV	11.21988G	44.15	54.00	-9.85	13.83	3	Vertical	214	1.50	-
5610MHz	Pass	PK	11.20902G	55.16	74.00	-18.84	13.84	3	Vertical	214	1.50	-
5610MHz	Pass	AV	11.21988G	45.23	54.00	-8.77	13.83	3	Horizontal	6	1.52	-
5610MHz	Pass	PK	11.22774G	55.39	74.00	-18.61	13.82	3	Horizontal	6	1.52	-



802.11ac VHT20-BF_Nss1,(MCS0)_2TX

20/03/2019

5260MHz_TX



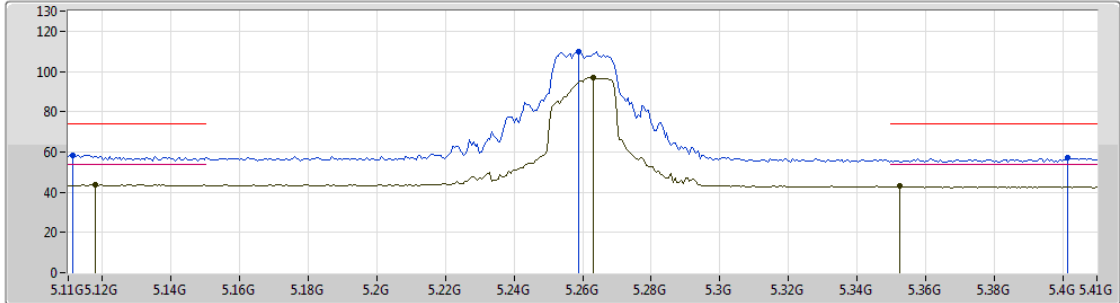
Type	Freq (Hz)	Level (dBuV/m)	Limit (dBuV/m)	Margin (dB)	Factor (dB)	Dist (m)	Condition	Azimuth (°)	Height (m)	Comments
AV	5.1418G	44.27	54.00	-9.73	4.08	3	Vertical	274	1.94	-
AV	5.2552G	97.84	Inf	-Inf	4.21	3	Vertical	274	1.94	-
AV	5.3566G	43.23	54.00	-10.77	4.32	3	Vertical	274	1.94	-
PK	5.143G	55.18	74.00	-18.82	4.09	3	Vertical	274	1.94	-
PK	5.2666G	106.79	Inf	-Inf	4.23	3	Vertical	274	1.94	-
PK	5.359G	54.69	74.00	-19.31	4.34	3	Vertical	274	1.94	-



802.11ac VHT20-BF_Nss1,(MCS0)_2TX

20/03/2019

5260MHz_TX



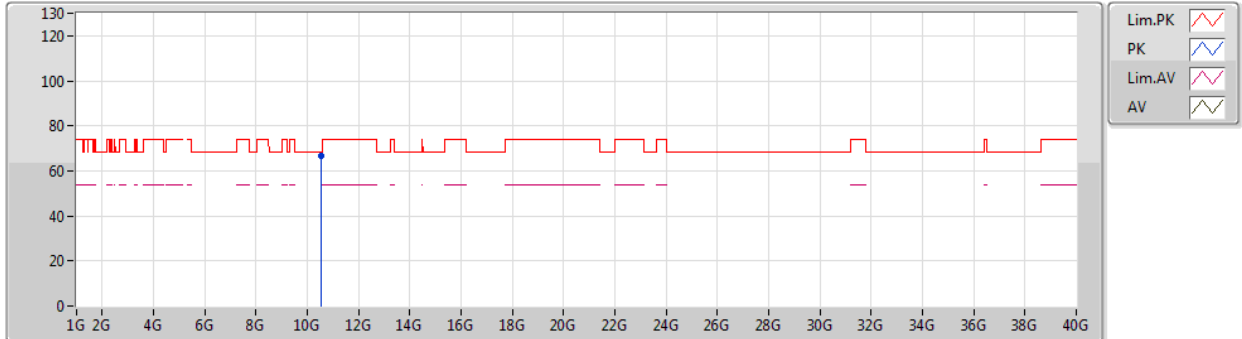
Type	Freq (Hz)	Level (dBuV/m)	Limit (dBuV/m)	Margin (dB)	Factor (dB)	Dist (m)	Condition	Azimuth (°)	Height (m)	Comments
AV	5.1178G	43.66	54.00	-10.34	4.05	3	Horizontal	87	1.37	-
AV	5.263G	96.93	Inf	-Inf	4.22	3	Horizontal	87	1.37	-
AV	5.3524G	42.90	54.00	-11.10	4.32	3	Horizontal	87	1.37	-
PK	5.1112G	58.49	74.00	-15.51	4.04	3	Horizontal	87	1.37	-
PK	5.2588G	109.80	Inf	-Inf	4.22	3	Horizontal	87	1.37	-
PK	5.4016G	56.91	74.00	-17.09	4.39	3	Horizontal	87	1.37	-



802.11ac VHT20-BF_Nss1,(MCS0)_2TX

20/03/2019

5260MHz_TX



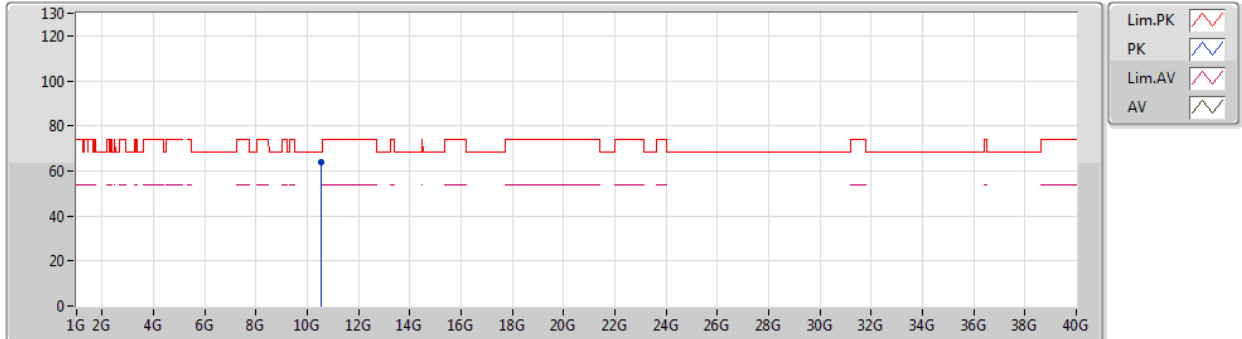
Type	Freq (Hz)	Level (dBuV/m)	Limit (dBuV/m)	Margin (dB)	Factor (dB)	Dist (m)	Condition	Azimuth (°)	Height (m)	Comment
PK	10.51801G	66.61	68.20	-1.59	12.98	3	Vertical	159	2.74	-



802.11ac VHT20-BF_Nss1,(MCS0)_2TX

20/03/2019

5260MHz_TX



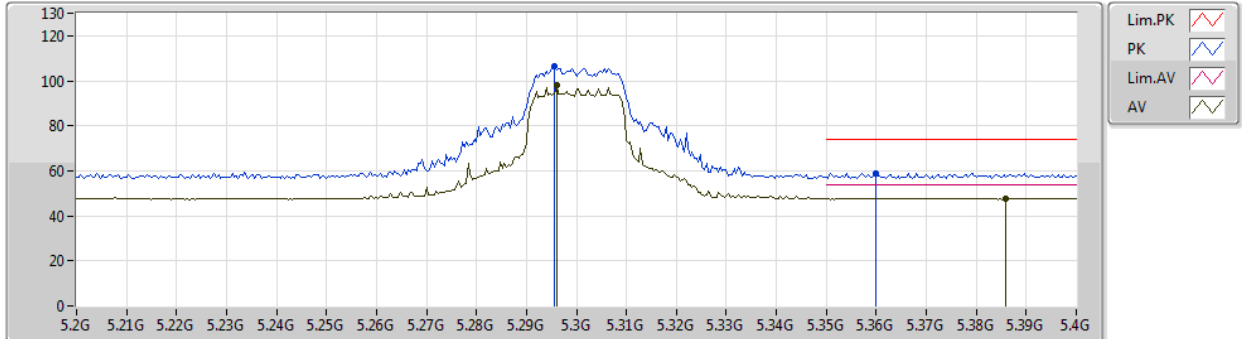
Type	Freq (Hz)	Level (dBuV/m)	Limit (dBuV/m)	Margin (dB)	Factor (dB)	Dist (m)	Condition	Azimuth (°)	Height (m)	Comment
PK	10.51905G	63.93	68.20	-4.27	12.98	3	Horizontal	240	1.25	-



802.11ac VHT20-BF_Nss1,(MCS0)_2TX

20/03/2019

5300MHz_TX



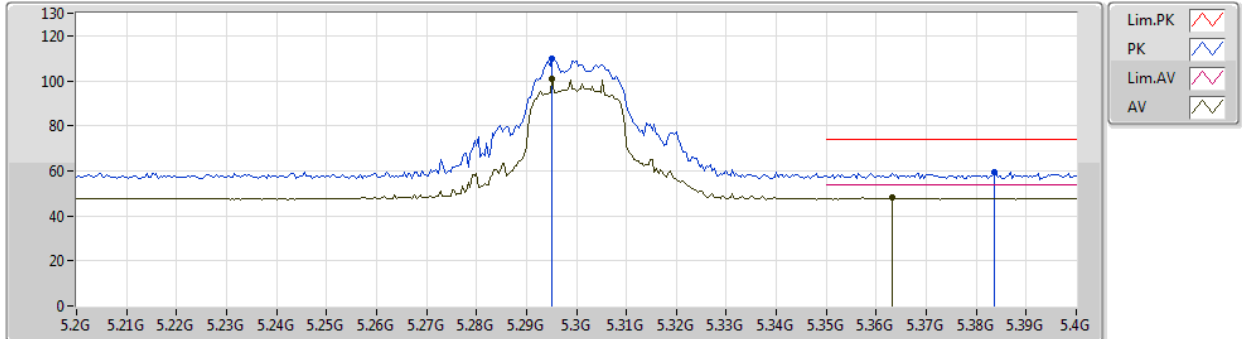
Type	Freq (Hz)	Level (dBuV/m)	Limit (dBuV/m)	Margin (dB)	Factor (dB)	Dist (m)	Condition	Azimuth (°)	Height (m)	Comment
AV	5.296G	97.99	Inf	-Inf	6.93	3	Vertical	331	1.60	-
AV	5.386G	47.82	54.00	-6.18	7.21	3	Vertical	331	1.60	-
PK	5.2956G	106.32	Inf	-Inf	6.93	3	Vertical	331	1.60	-
PK	5.36G	58.98	74.00	-15.02	7.12	3	Vertical	331	1.60	-



802.11ac VHT20-BF_Nss1,(MCS0)_2TX

20/03/2019

5300MHz_TX



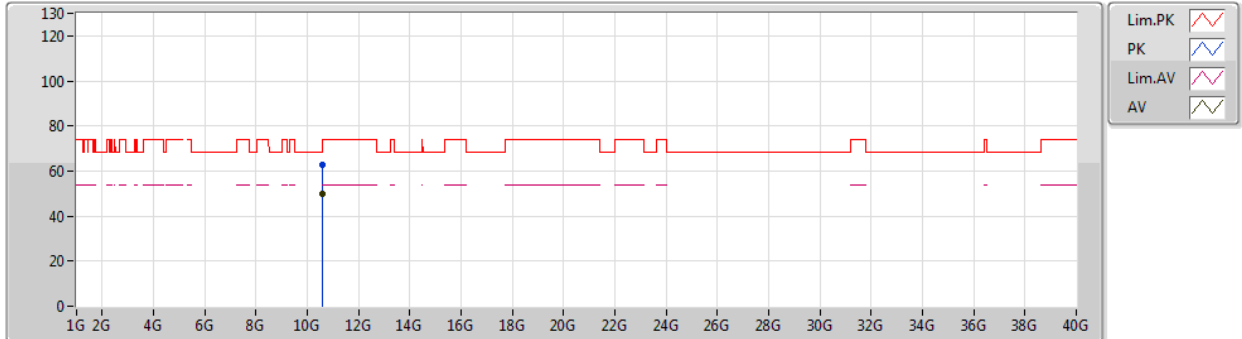
Type	Freq (Hz)	Level (dBuV/m)	Limit (dBuV/m)	Margin (dB)	Factor (dB)	Dist (m)	Condition	Azimuth (°)	Height (m)	Comment
AV	5.2952G	101.02	Inf	-Inf	6.93	3	Horizontal	352	1.04	-
AV	5.3632G	47.95	54.00	-6.05	7.14	3	Horizontal	352	1.04	-
PK	5.2952G	109.87	Inf	-Inf	6.93	3	Horizontal	352	1.04	-
PK	5.3836G	59.60	74.00	-14.40	7.21	3	Horizontal	352	1.04	-



802.11ac VHT20-BF_Nss1,(MCS0)_2TX

20/03/2019

5300MHz_TX



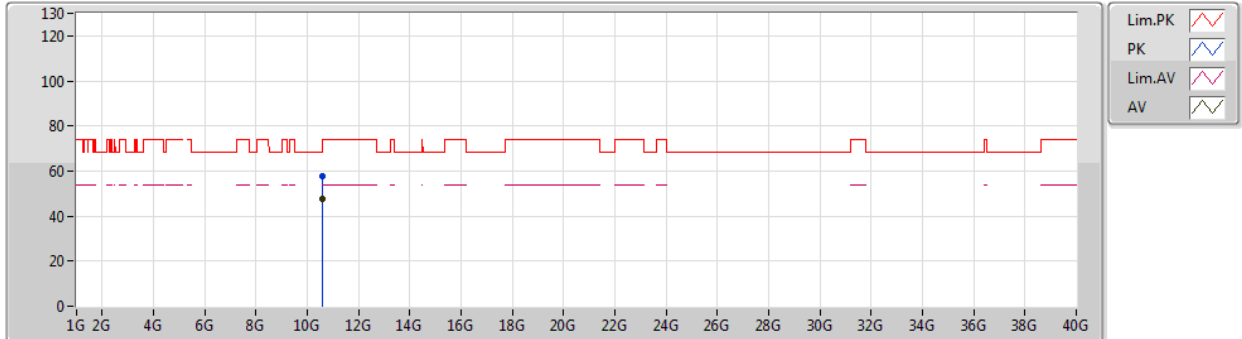
Type	Freq (Hz)	Level (dBuV/m)	Limit (dBuV/m)	Margin (dB)	Factor (dB)	Dist (m)	Condition	Azimuth (°)	Height (m)	Comment
AV	10.60028G	49.69	54.00	-4.31	16.38	3	Vertical	209	1.40	-
PK	10.59804G	62.61	68.20	-5.59	16.38	3	Vertical	209	1.40	-



802.11ac VHT20-BF_Nss1,(MCS0)_2TX

20/03/2019

5300MHz_TX



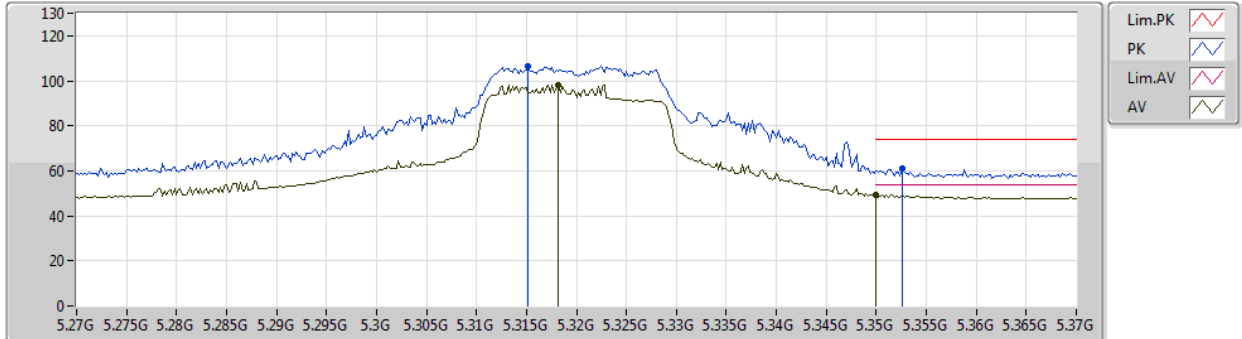
Type	Freq (Hz)	Level (dBuV/m)	Limit (dBuV/m)	Margin (dB)	Factor (dB)	Dist (m)	Condition	Azimuth (°)	Height (m)	Comment
AV	10.60029G	47.44	54.00	-6.56	16.38	3	Horizontal	0	2.04	-
PK	10.59984G	57.95	68.20	-10.25	16.38	3	Horizontal	0	2.04	-



802.11ac VHT20-BF_Nss1,(MCS0)_2TX

20/03/2019

5320MHz_TX

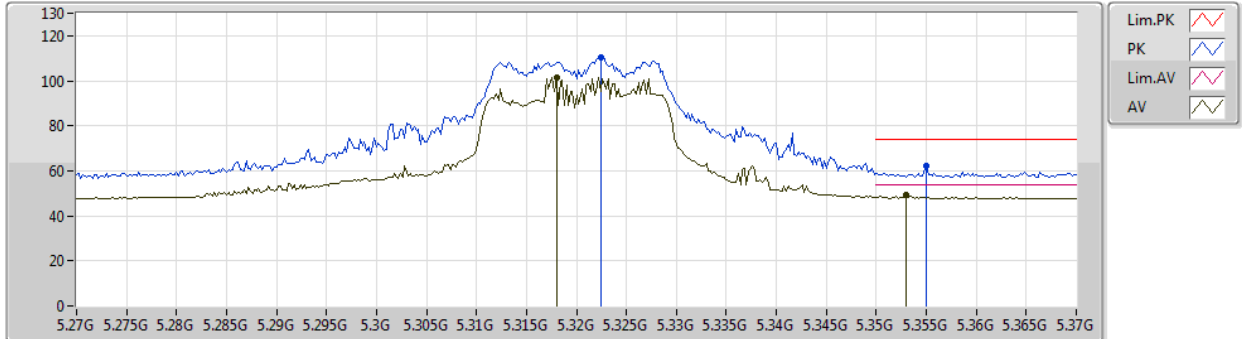


Type	Freq (Hz)	Level (dBuV/m)	Limit (dBuV/m)	Margin (dB)	Factor (dB)	Dist (m)	Condition	Azimuth (°)	Height (m)	Comment
AV	5.3182G	98.18	Inf	-Inf	6.99	3	Vertical	333	1.48	-
AV	5.35G	49.53	54.00	-4.47	7.09	3	Vertical	333	1.48	-
PK	5.3152G	106.64	Inf	-Inf	6.97	3	Vertical	333	1.48	-
PK	5.3526G	61.33	74.00	-12.67	7.11	3	Vertical	333	1.48	-

802.11ac VHT20-BF_Nss1,(MCS0)_2TX

20/03/2019

5320MHz_TX



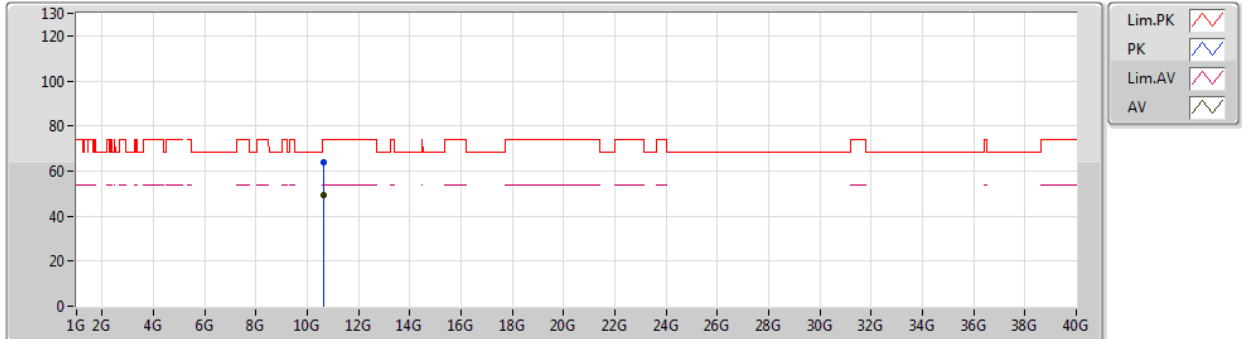
Type	Freq (Hz)	Level (dBuV/m)	Limit (dBuV/m)	Margin (dB)	Factor (dB)	Dist (m)	Condition	Azimuth (°)	Height (m)	Comment
AV	5.318G	101.52	Inf	-Inf	6.99	3	Horizontal	343	1.01	-
AV	5.353G	49.25	54.00	-4.75	7.11	3	Horizontal	343	1.01	-
PK	5.3224G	110.21	Inf	-Inf	6.99	3	Horizontal	343	1.01	-
PK	5.355G	62.07	74.00	-11.93	7.11	3	Horizontal	343	1.01	-



802.11ac VHT20-BF_Nss1,(MCS0)_2TX

20/03/2019

5320MHz_TX



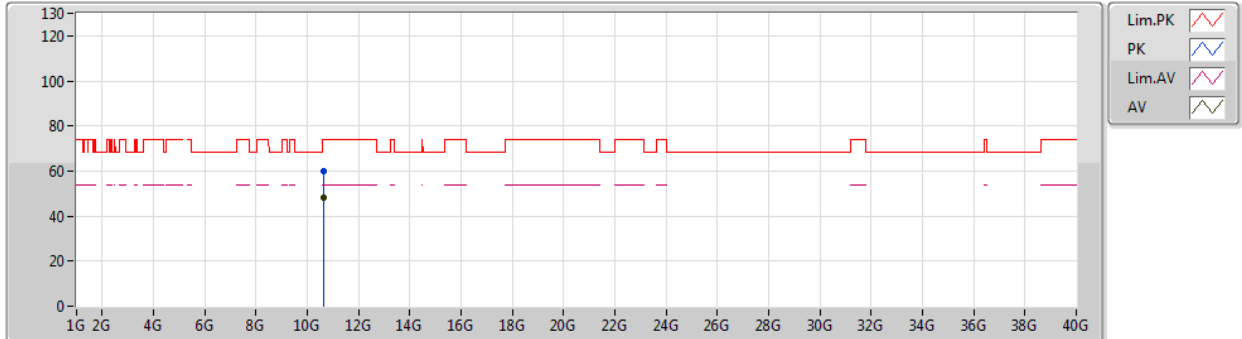
Type	Freq (Hz)	Level (dBuV/m)	Limit (dBuV/m)	Margin (dB)	Factor (dB)	Dist (m)	Condition	Azimuth (°)	Height (m)	Comment
AV	10.6439G	49.34	54.00	-4.66	16.46	3	Vertical	208	1.34	-
PK	10.64384G	63.96	74.00	-10.04	16.46	3	Vertical	208	1.34	-



802.11ac VHT20-BF_Nss1,(MCS0)_2TX

20/03/2019

5320MHz_TX



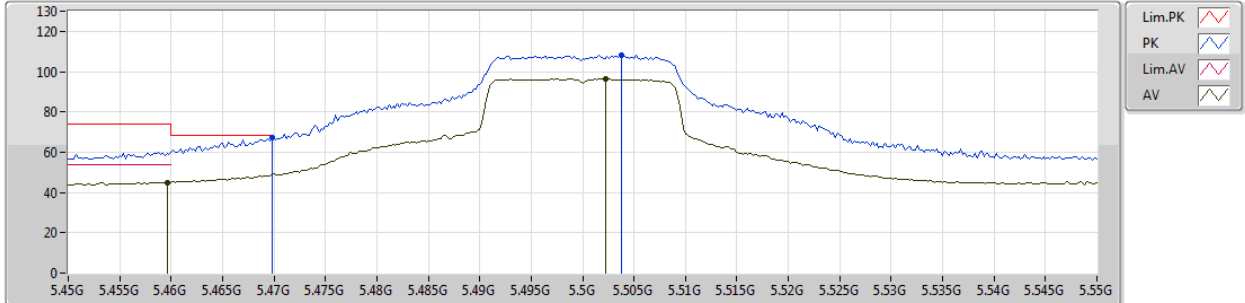
Type	Freq (Hz)	Level (dBuV/m)	Limit (dBuV/m)	Margin (dB)	Factor (dB)	Dist (m)	Condition	Azimuth (°)	Height (m)	Comment
AV	10.64102G	48.08	54.00	-5.92	16.44	3	Horizontal	233	1.18	-
PK	10.63664G	59.78	74.00	-14.22	16.44	3	Horizontal	233	1.18	-



802.11ac VHT20-BF_Nss1,(MCS0)_2TX

20/03/2019

5500MHz_TX



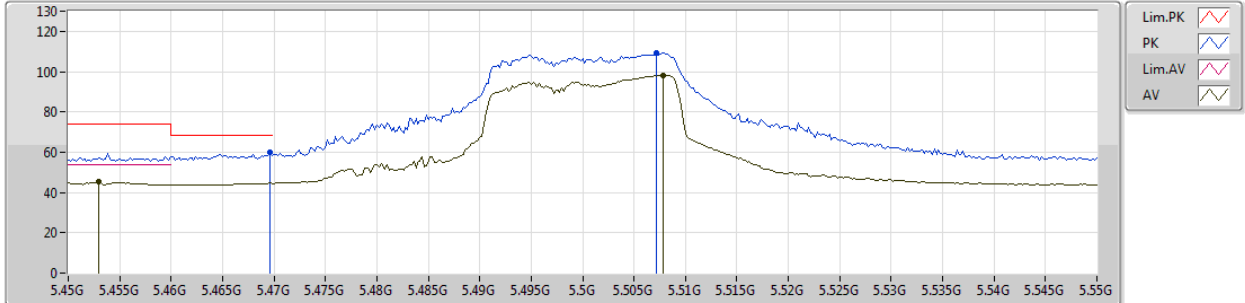
Type	Freq (Hz)	Level (dBuV/m)	Limit (dBuV/m)	Margin (dB)	Factor (dB)	Dist (m)	Condition	Azimuth (°)	Height (m)	Comments
AV	5.4596G	45.05	54.00	-8.95	4.46	3	Vertical	353	1.50	-
AV	5.5022G	96.58	Inf	-Inf	4.50	3	Vertical	353	1.50	-
PK	5.4698G	67.52	68.20	-0.68	4.47	3	Vertical	353	1.50	-
PK	5.5038G	108.22	Inf	-Inf	4.51	3	Vertical	353	1.50	-



802.11ac VHT20-BF_Nss1,(MCS0)_2TX

20/03/2019

5500MHz_TX



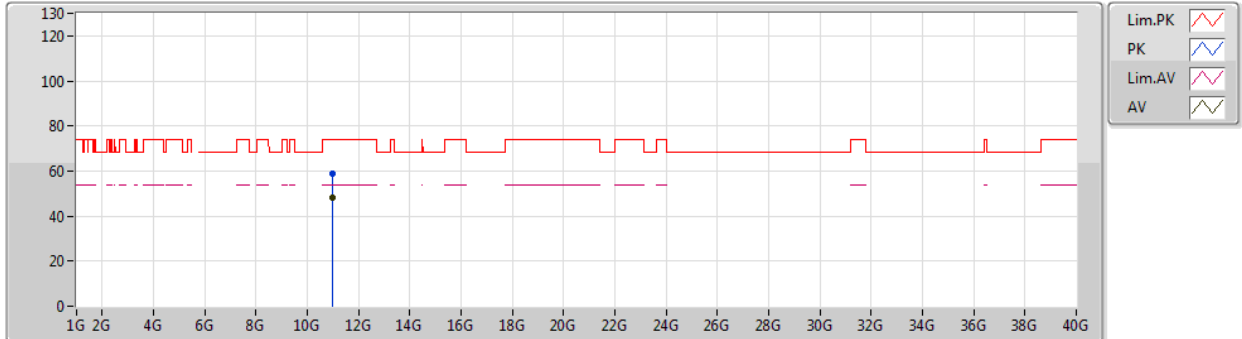
Type	Freq (Hz)	Level (dBuV/m)	Limit (dBuV/m)	Margin (dB)	Factor (dB)	Dist (m)	Condition	Azimuth (°)	Height (m)	Comments
AV	5.453G	45.17	54.00	-8.83	4.45	3	Horizontal	6	1.50	-
AV	5.5078G	98.20	Inf	-Inf	4.52	3	Horizontal	6	1.50	-
PK	5.4696G	60.11	68.20	-8.09	4.47	3	Horizontal	6	1.50	-
PK	5.5072G	109.33	Inf	-Inf	4.52	3	Horizontal	6	1.50	-



802.11ac VHT20-BF_Nss1,(MCS0)_2TX

20/03/2019

5500MHz_TX

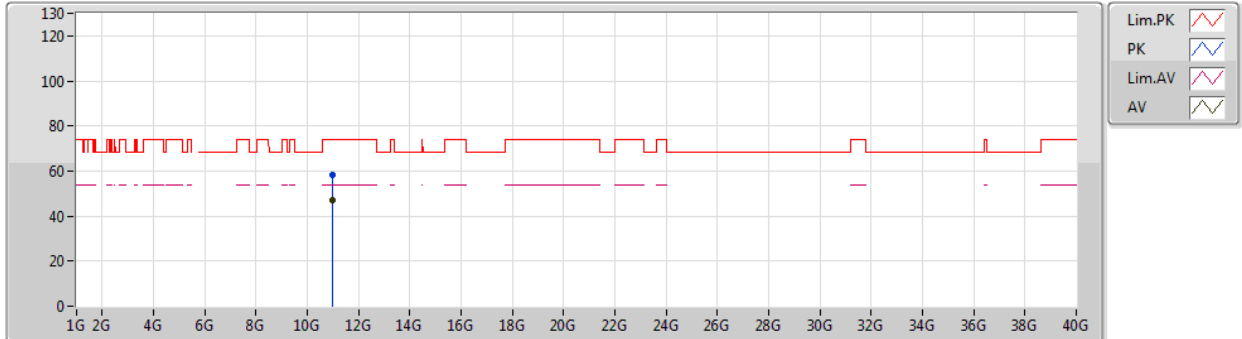


Type	Freq (Hz)	Level (dBuV/m)	Limit (dBuV/m)	Margin (dB)	Factor (dB)	Dist (m)	Condition	Azimuth (°)	Height (m)	Comment
AV	11.00012G	48.30	54.00	-5.70	15.98	3	Vertical	158	2.43	-
PK	11.0003G	58.76	74.00	-15.24	15.98	3	Vertical	158	2.43	-

802.11ac VHT20-BF_Nss1,(MCS0)_2TX

20/03/2019

5500MHz_TX



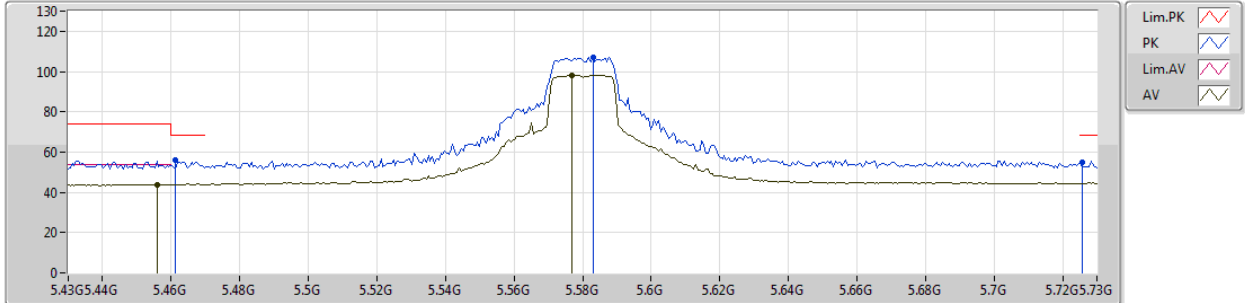
Type	Freq (Hz)	Level (dBuV/m)	Limit (dBuV/m)	Margin (dB)	Factor (dB)	Dist (m)	Condition	Azimuth (°)	Height (m)	Comment
AV	11G	46.98	54.00	-7.02	15.98	3	Horizontal	226	1.74	-
PK	10.99976G	58.19	74.00	-15.81	15.98	3	Horizontal	226	1.74	-



802.11ac VHT20-BF_Nss1,(MCS0)_2TX

20/03/2019

5580MHz_TX



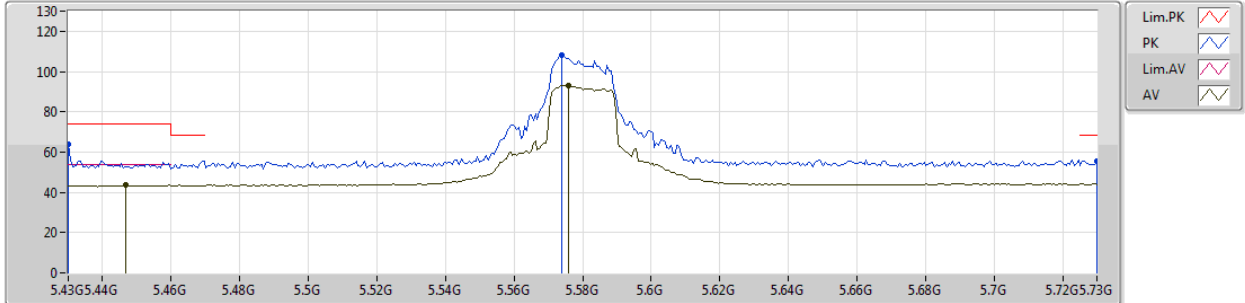
Type	Freq (Hz)	Level (dBuV/m)	Limit (dBuV/m)	Margin (dB)	Factor (dB)	Dist (m)	Condition	Azimuth (°)	Height (m)	Comments
AV	5.4558G	43.89	54.00	-10.11	4.45	3	Vertical	288	1.80	-
AV	5.577G	98.03	Inf	-Inf	4.66	3	Vertical	288	1.80	-
PK	5.4612G	55.83	68.20	-12.37	4.46	3	Vertical	288	1.80	-
PK	5.583G	107.01	Inf	-Inf	4.67	3	Vertical	288	1.80	-
PK	5.7258G	55.15	68.20	-13.05	4.96	3	Vertical	288	1.80	-



802.11ac VHT20-BF_Nss1,(MCS0)_2TX

20/03/2019

5580MHz_TX

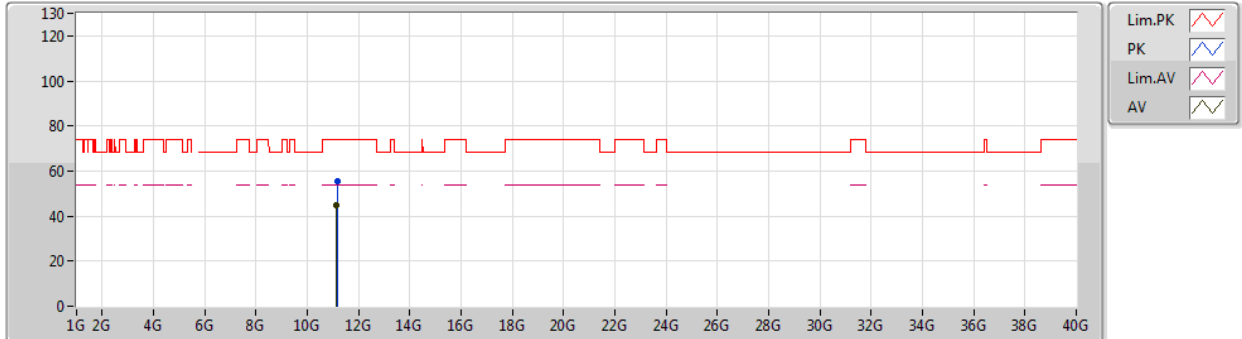


Type	Freq (Hz)	Level (dBuV/m)	Limit (dBuV/m)	Margin (dB)	Factor (dB)	Dist (m)	Condition	Azimuth (°)	Height (m)	Comments
AV	5.4468G	43.56	54.00	-10.44	4.44	3	Horizontal	1	1.26	-
AV	5.5758G	93.26	Inf	-Inf	4.66	3	Horizontal	1	1.26	-
PK	5.43G	63.83	74.00	-10.17	4.42	3	Horizontal	1	1.26	-
PK	5.574G	108.00	Inf	-Inf	4.65	3	Horizontal	1	1.26	-
PK	5.73G	55.36	68.20	-12.84	4.96	3	Horizontal	1	1.26	-

802.11ac VHT20-BF_Nss1,(MCS0)_2TX

20/03/2019

5580MHz_TX



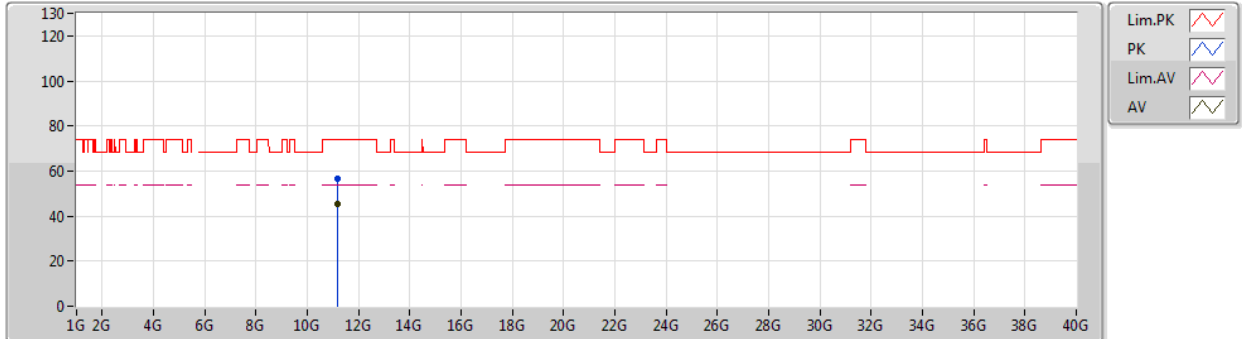
Type	Freq (Hz)	Level (dBuV/m)	Limit (dBuV/m)	Margin (dB)	Factor (dB)	Dist (m)	Condition	Azimuth (°)	Height (m)	Comment
AV	11.15454G	44.62	54.00	-9.38	13.89	3	Vertical	300	1.50	-
PK	11.15652G	55.69	74.00	-18.31	13.89	3	Vertical	300	1.50	-



802.11ac VHT20-BF_Nss1,(MCS0)_2TX

20/03/2019

5580MHz_TX



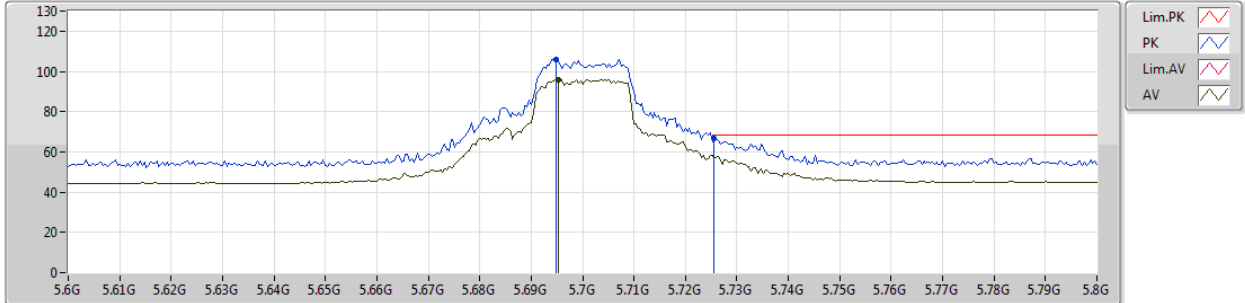
Type	Freq (Hz)	Level (dBuV/m)	Limit (dBuV/m)	Margin (dB)	Factor (dB)	Dist (m)	Condition	Azimuth (°)	Height (m)	Comment
AV	11.16192G	45.54	54.00	-8.46	13.88	3	Horizontal	224	1.48	-
PK	11.15766G	56.42	74.00	-17.58	13.89	3	Horizontal	224	1.48	-



802.11ac VHT20-BF_Nss1,(MCS0)_2TX

20/03/2019

5700MHz_TX



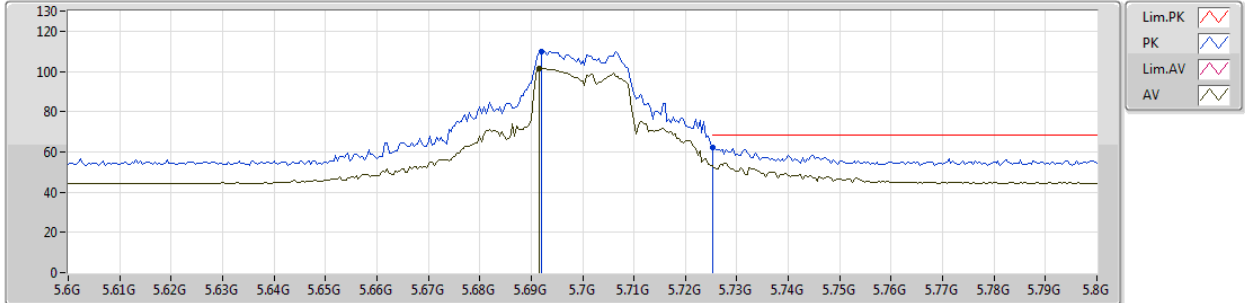
Type	Freq (Hz)	Level (dBuV/m)	Limit (dBuV/m)	Margin (dB)	Factor (dB)	Dist (m)	Condition	Azimuth (°)	Height (m)	Comments
AV	5.6952G	95.99	Inf	-Inf	4.90	3	Vertical	0	1.88	-
PK	5.6948G	106.15	Inf	-Inf	4.90	3	Vertical	0	1.88	-
PK	5.7256G	66.79	68.20	-1.41	4.96	3	Vertical	0	1.88	-



802.11ac VHT20-BF_Nss1,(MCS0)_2TX

20/03/2019

5700MHz_TX



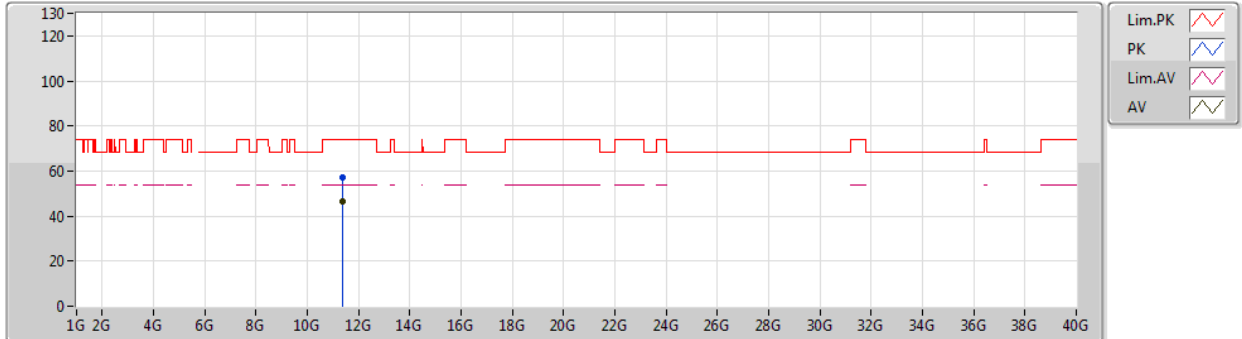
Type	Freq (Hz)	Level (dBuV/m)	Limit (dBuV/m)	Margin (dB)	Factor (dB)	Dist (m)	Condition	Azimuth (°)	Height (m)	Comments
AV	5.6916G	101.69	Inf	-Inf	4.90	3	Horizontal	11	1.47	-
PK	5.692G	110.03	Inf	-Inf	4.90	3	Horizontal	11	1.47	-
PK	5.7252G	61.92	68.20	-6.28	4.96	3	Horizontal	11	1.47	-



802.11ac VHT20-BF_Nss1,(MCS0)_2TX

20/03/2019

5700MHz_TX



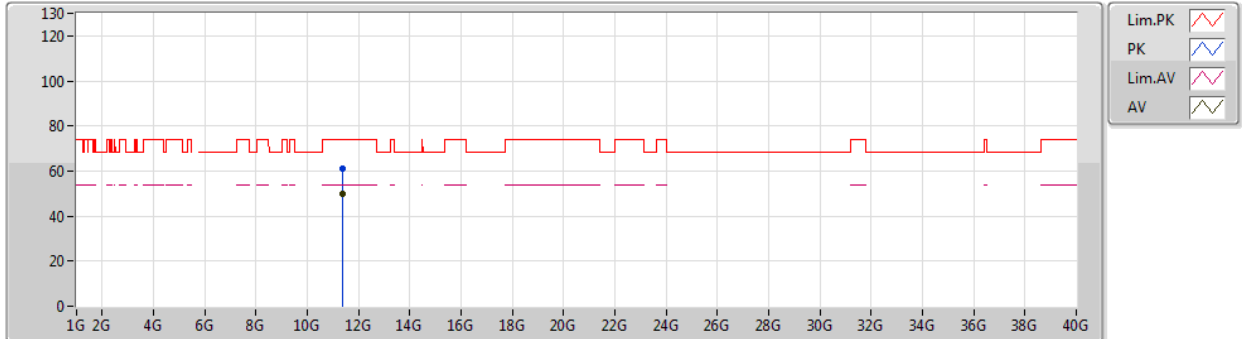
Type	Freq (Hz)	Level (dBuV/m)	Limit (dBuV/m)	Margin (dB)	Factor (dB)	Dist (m)	Condition	Azimuth (°)	Height (m)	Comment
AV	11.39976G	46.35	54.00	-7.65	13.66	3	Vertical	159	1.48	-
PK	11.39802G	57.43	74.00	-16.57	13.66	3	Vertical	159	1.48	-



802.11ac VHT20-BF_Nss1,(MCS0)_2TX

20/03/2019

5700MHz_TX



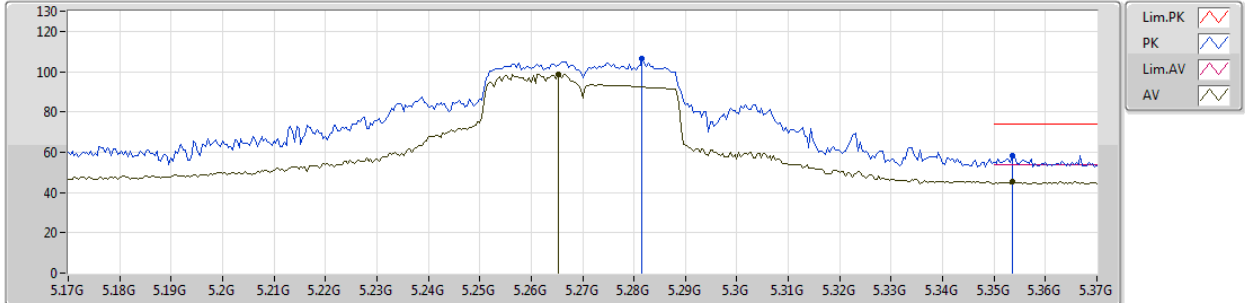
Type	Freq (Hz)	Level (dBuV/m)	Limit (dBuV/m)	Margin (dB)	Factor (dB)	Dist (m)	Condition	Azimuth (°)	Height (m)	Comment
AV	11.39958G	50.01	54.00	-3.99	13.66	3	Horizontal	279	1.56	-
PK	11.39046G	61.01	74.00	-12.99	13.66	3	Horizontal	279	1.56	-



802.11ac VHT40-BF_Nss1,(MCS0)_2TX

20/03/2019

5270MHz_TX



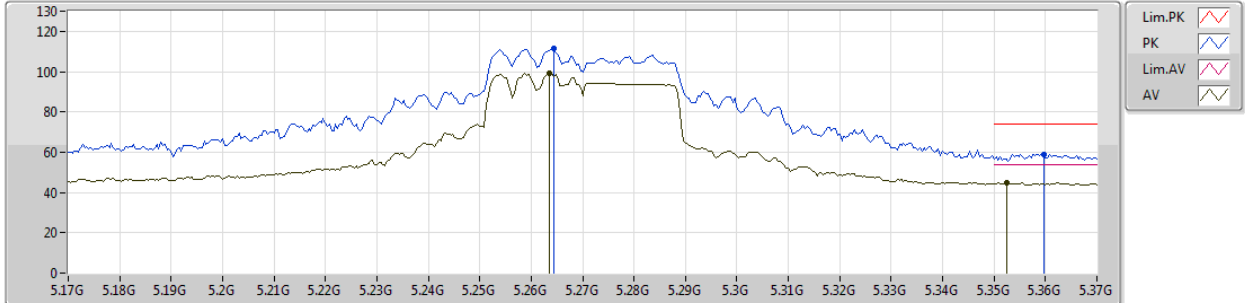
Type	Freq (Hz)	Level (dBuV/m)	Limit (dBuV/m)	Margin (dB)	Factor (dB)	Dist (m)	Condition	Azimuth (°)	Height (m)	Comments
AV	5.2652G	98.71	Inf	-Inf	4.23	3	Vertical	260	1.73	-
AV	5.3536G	45.42	54.00	-8.58	4.32	3	Vertical	260	1.73	-
PK	5.2816G	106.32	Inf	-Inf	4.24	3	Vertical	260	1.73	-
PK	5.3536G	58.21	74.00	-15.79	4.32	3	Vertical	260	1.73	-



802.11ac VHT40-BF_Nss1,(MCS0)_2TX

20/03/2019

5270MHz_TX

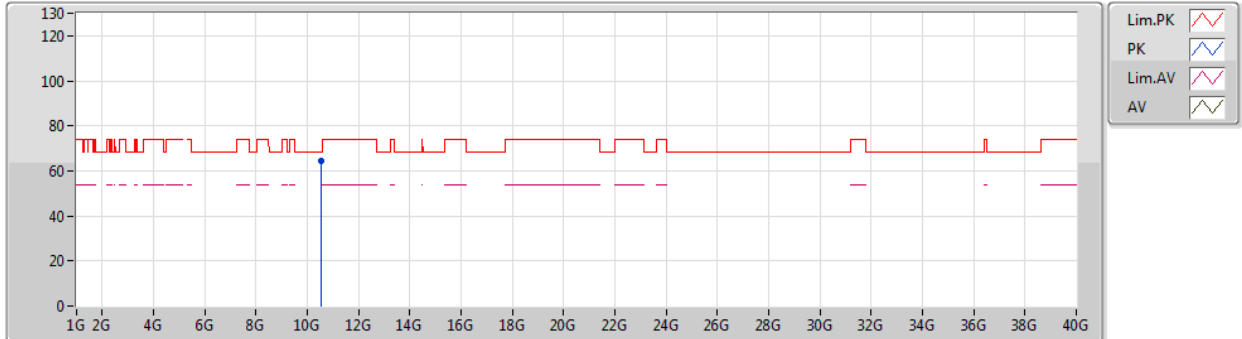


Type	Freq (Hz)	Level (dBuV/m)	Limit (dBuV/m)	Margin (dB)	Factor (dB)	Dist (m)	Condition	Azimuth (°)	Height (m)	Comments
AV	5.2636G	99.46	Inf	-Inf	4.23	3	Horizontal	60	1.50	-
AV	5.3524G	44.65	54.00	-9.35	4.32	3	Horizontal	60	1.50	-
PK	5.2644G	111.36	Inf	-Inf	4.23	3	Horizontal	60	1.50	-
PK	5.3596G	59.07	74.00	-14.93	4.34	3	Horizontal	60	1.50	-

802.11ac VHT40-BF_Nss1,(MCS0)_2TX

20/03/2019

5270MHz_TX



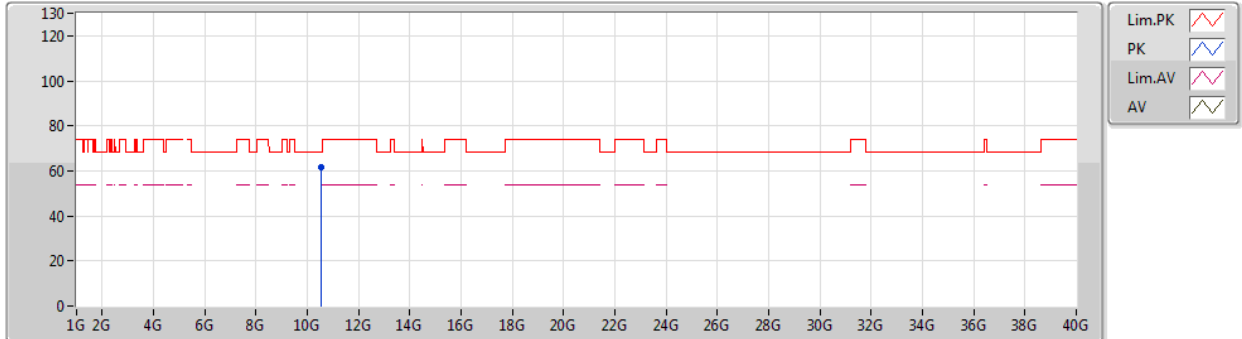
Type	Freq (Hz)	Level (dBuV/m)	Limit (dBuV/m)	Margin (dB)	Factor (dB)	Dist (m)	Condition	Azimuth (°)	Height (m)	Comment
PK	10.5362G	64.28	68.20	-3.92	14.78	3	Vertical	200	2.97	-



802.11ac VHT40-BF_Nss1,(MCS0)_2TX

20/03/2019

5270MHz_TX



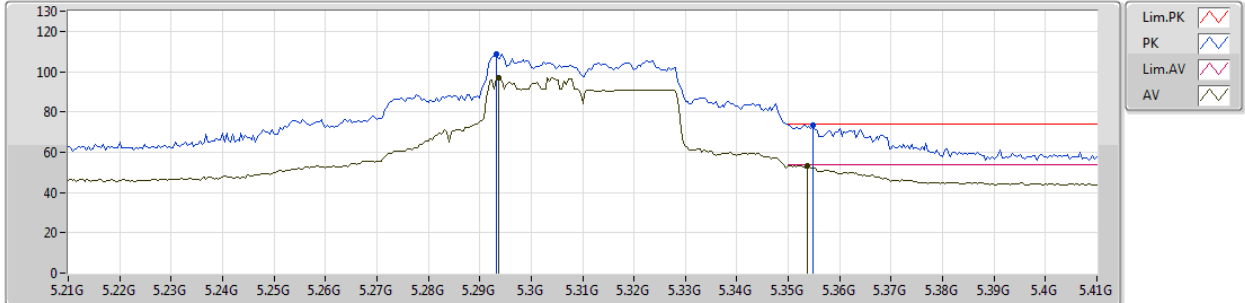
Type	Freq (Hz)	Level (dBuV/m)	Limit (dBuV/m)	Margin (dB)	Factor (dB)	Dist (m)	Condition	Azimuth (°)	Height (m)	Comment
PK	10.53875G	61.38	74.00	-12.62	14.78	3	Horizontal	325	1.33	-



802.11ac VHT40-BF_Nss1,(MCS0)_2TX

20/03/2019

5310MHz_TX



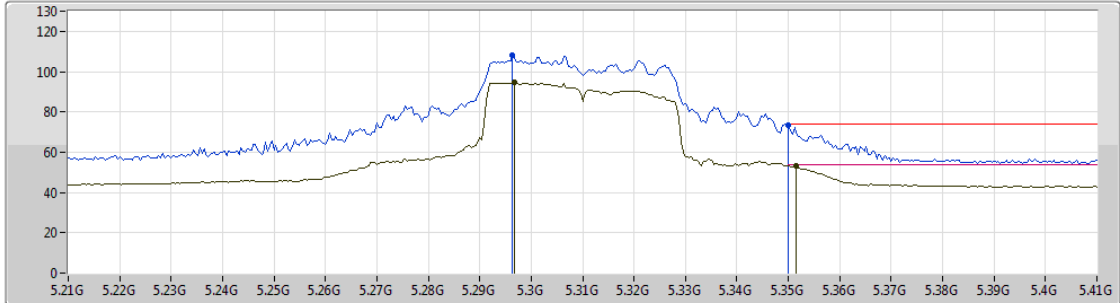
Type	Freq (Hz)	Level (dBuV/m)	Limit (dBuV/m)	Margin (dB)	Factor (dB)	Dist (m)	Condition	Azimuth (°)	Height (m)	Comments
AV	5.2936G	97.01	Inf	-Inf	4.26	3	Vertical	269	1.46	-
AV	5.3536G	53.46	54.00	-0.54	4.32	3	Vertical	269	1.46	-
PK	5.2932G	108.68	Inf	-Inf	4.26	3	Vertical	269	1.46	-
PK	5.3548G	73.40	74.00	-0.60	4.32	3	Vertical	269	1.46	-



802.11ac VHT40-BF_Nss1,(MCS0)_2TX

20/03/2019

5310MHz_TX



Legend for the spectrum plot:

- Lim.PK
- PK
- Lim.AV
- AV

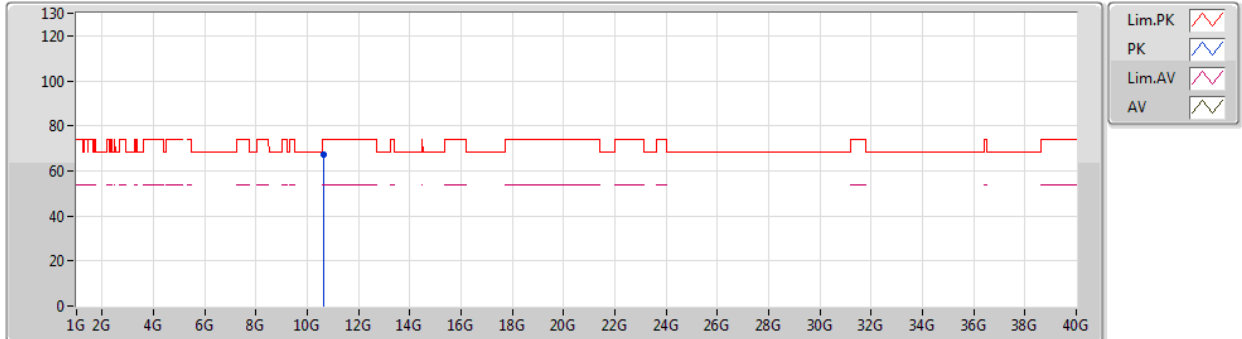
Type	Freq (Hz)	Level (dBuV/m)	Limit (dBuV/m)	Margin (dB)	Factor (dB)	Dist (m)	Condition	Azimuth (°)	Height (m)	Comments
AV	5.2968G	94.43	Inf	-Inf	4.26	3	Horizontal	65	1.50	-
AV	5.3516G	53.23	54.00	-0.77	4.32	3	Horizontal	65	1.50	-
PK	5.2964G	108.03	Inf	-Inf	4.26	3	Horizontal	65	1.50	-
PK	5.35G	73.52	74.00	-0.48	4.32	3	Horizontal	65	1.50	-



802.11ac VHT40-BF_Nss1,(MCS0)_2TX

20/03/2019

5310MHz_TX



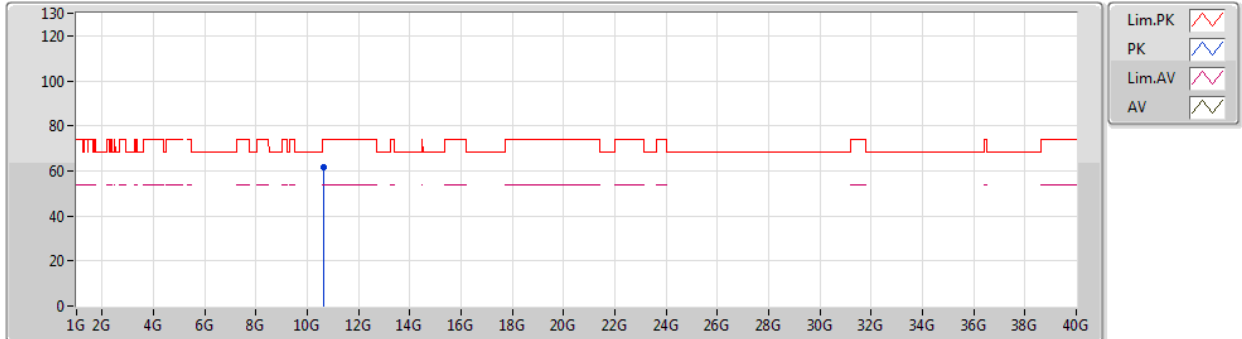
Type	Freq (Hz)	Level (dBuV/m)	Limit (dBuV/m)	Margin (dB)	Factor (dB)	Dist (m)	Condition	Azimuth (°)	Height (m)	Comment
PK	10.61771G	67.08	74.00	-6.92	13.20	3	Vertical	151	2.71	-



802.11ac VHT40-BF_Nss1,(MCS0)_2TX

20/03/2019

5310MHz_TX



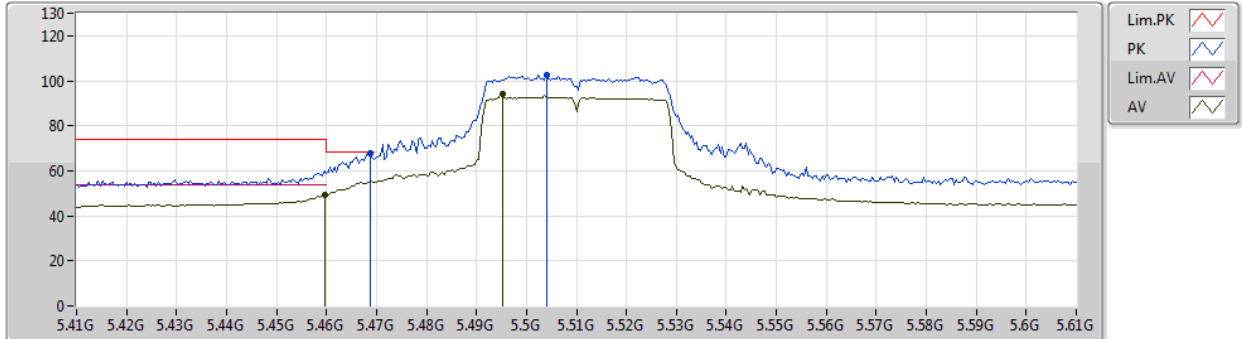
Type	Freq (Hz)	Level (dBuV/m)	Limit (dBuV/m)	Margin (dB)	Factor (dB)	Dist (m)	Condition	Azimuth (°)	Height (m)	Comment
PK	10.62045G	61.63	74.00	-12.37	13.21	3	Horizontal	4	1.25	-



802.11ac VHT40-BF_Nss1,(MCS0)_2TX

21/03/2019

5510MHz_TX

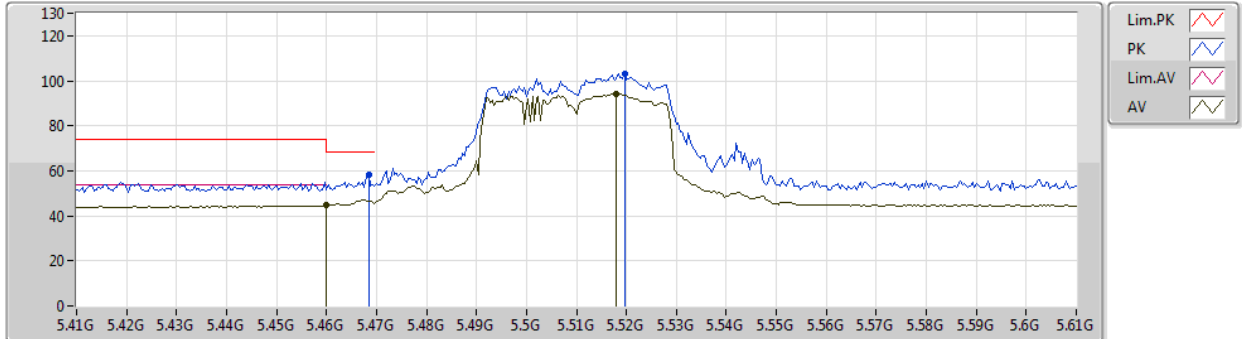


Type	Freq (Hz)	Level (dBuV/m)	Limit (dBuV/m)	Margin (dB)	Factor (dB)	Dist (m)	Condition	Azimuth (°)	Height (m)	Comment
AV	5.4596G	49.20	54.00	-4.80	4.46	3	Vertical	263	1.91	-
AV	5.4952G	93.86	Inf	-Inf	4.50	3	Vertical	263	1.91	-
PK	5.4688G	68.08	68.20	-0.12	4.47	3	Vertical	263	1.91	-
PK	5.504G	102.44	Inf	-Inf	4.51	3	Vertical	263	1.91	-

802.11ac VHT40-BF_Nss1,(MCS0)_2TX

21/03/2019

5510MHz_TX



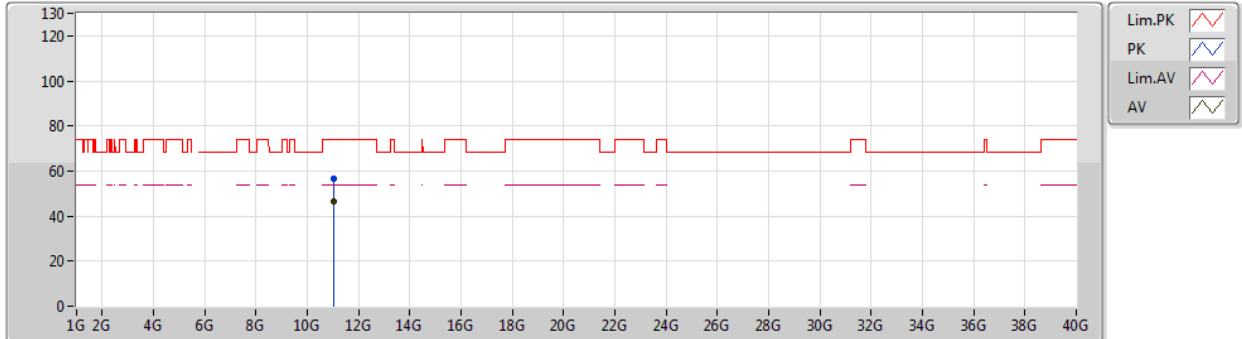
Type	Freq (Hz)	Level (dBuV/m)	Limit (dBuV/m)	Margin (dB)	Factor (dB)	Dist (m)	Condition	Azimuth (°)	Height (m)	Comment
AV	5.46G	44.62	54.00	-9.38	4.46	3	Horizontal	357	1.47	-
AV	5.518G	94.13	Inf	-Inf	4.54	3	Horizontal	357	1.47	-
PK	5.4684G	58.33	68.20	-9.87	4.47	3	Horizontal	357	1.47	-
PK	5.5196G	103.26	Inf	-Inf	4.54	3	Horizontal	357	1.47	-



802.11ac VHT40-BF_Nss1,(MCS0)_2TX

21/03/2019

5510MHz_TX



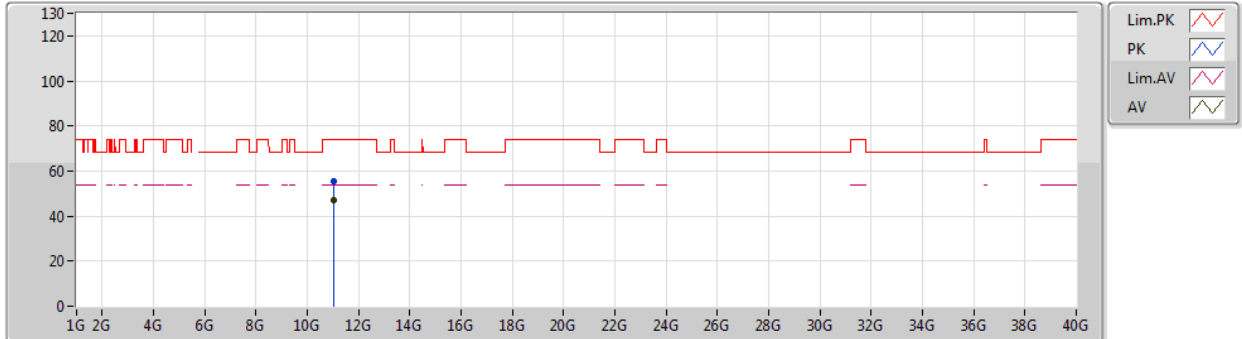
Type	Freq (Hz)	Level (dBuV/m)	Limit (dBuV/m)	Margin (dB)	Factor (dB)	Dist (m)	Condition	Azimuth (°)	Height (m)	Comment
AV	11.02G	46.76	54.00	-7.24	14.01	3	Vertical	140	2.16	-
PK	11.02348G	56.39	74.00	-17.61	14.01	3	Vertical	140	2.16	-



802.11ac VHT40-BF_Nss1,(MCS0)_2TX

21/03/2019

5510MHz_TX



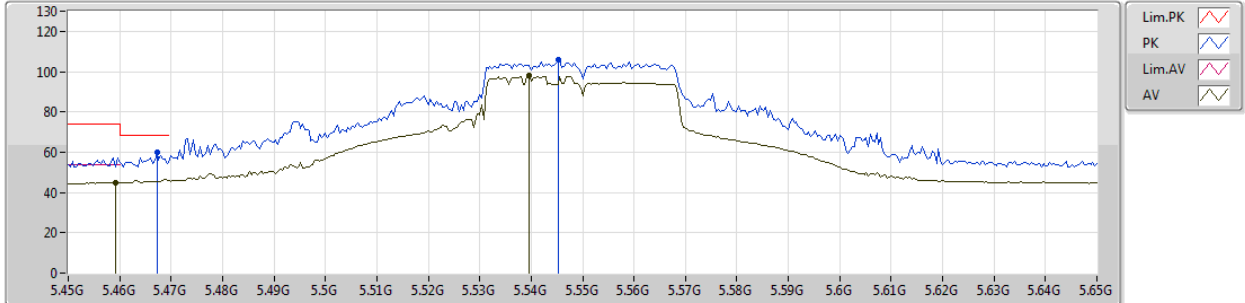
Type	Freq (Hz)	Level (dBuV/m)	Limit (dBuV/m)	Margin (dB)	Factor (dB)	Dist (m)	Condition	Azimuth (°)	Height (m)	Comment
AV	11.02006G	47.34	54.00	-6.66	14.01	3	Horizontal	244	1.50	-
PK	11.01958G	55.73	74.00	-18.27	14.01	3	Horizontal	244	1.50	-



802.11ac VHT40-BF_Nss1,(MCS0)_2TX

21/03/2019

5550MHz_TX



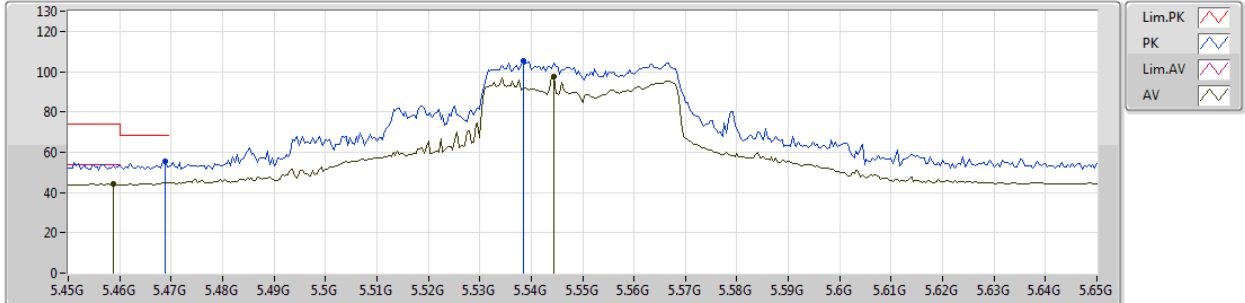
Type	Freq (Hz)	Level (dBuV/m)	Limit (dBuV/m)	Margin (dB)	Factor (dB)	Dist (m)	Condition	Azimuth (°)	Height (m)	Comments
AV	5.4592G	44.95	54.00	-9.05	4.46	3	Vertical	342	1.50	-
AV	5.5396G	98.03	Inf	-Inf	4.59	3	Vertical	342	1.50	-
PK	5.4672G	60.07	68.20	-8.13	4.47	3	Vertical	342	1.50	-
PK	5.5452G	106.03	Inf	-Inf	4.59	3	Vertical	342	1.50	-



802.11ac VHT40-BF_Nss1,(MCS0)_2TX

21/03/2019

5550MHz_TX



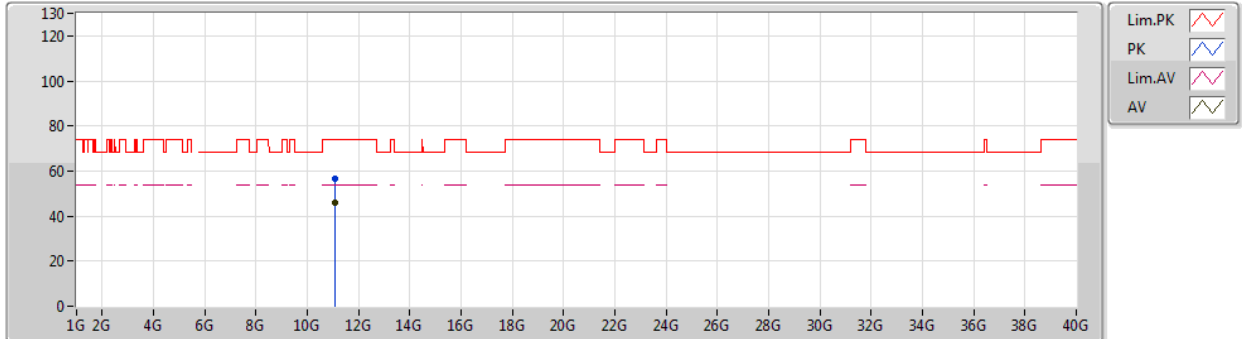
Type	Freq (Hz)	Level (dBuV/m)	Limit (dBuV/m)	Margin (dB)	Factor (dB)	Dist (m)	Condition	Azimuth (°)	Height (m)	Comments
AV	5.4588G	44.13	54.00	-9.87	4.46	3	Horizontal	5	1.50	-
AV	5.5444G	97.64	Inf	-Inf	4.59	3	Horizontal	5	1.50	-
PK	5.4688G	55.25	68.20	-12.95	4.47	3	Horizontal	5	1.50	-
PK	5.5384G	105.15	Inf	-Inf	4.58	3	Horizontal	5	1.50	-



802.11ac VHT40-BF_Nss1,(MCS0)_2TX

21/03/2019

5550MHz_TX



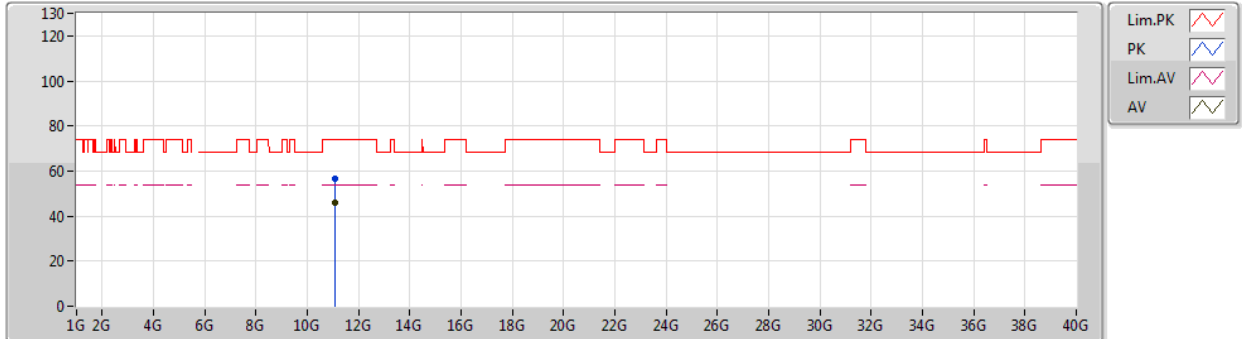
Type	Freq (Hz)	Level (dBuV/m)	Limit (dBuV/m)	Margin (dB)	Factor (dB)	Dist (m)	Condition	Azimuth (°)	Height (m)	Comment
AV	11.08542G	46.06	54.00	-7.94	13.95	3	Vertical	141	2.12	-
PK	11.09922G	56.86	74.00	-17.14	13.94	3	Vertical	141	2.12	-



802.11ac VHT40-BF_Nss1,(MCS0)_2TX

21/03/2019

5550MHz_TX



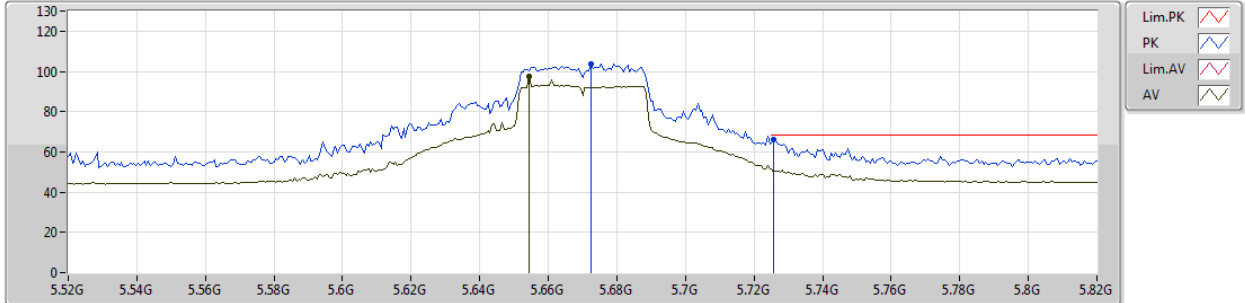
Type	Freq (Hz)	Level (dBuV/m)	Limit (dBuV/m)	Margin (dB)	Factor (dB)	Dist (m)	Condition	Azimuth (°)	Height (m)	Comment
AV	11.10006G	45.85	54.00	-8.15	13.94	3	Horizontal	239	2.99	-
PK	11.09994G	56.82	74.00	-17.18	13.94	3	Horizontal	239	2.99	-



802.11ac VHT40-BF_Nss1,(MCS0)_2TX

21/03/2019

5670MHz_TX



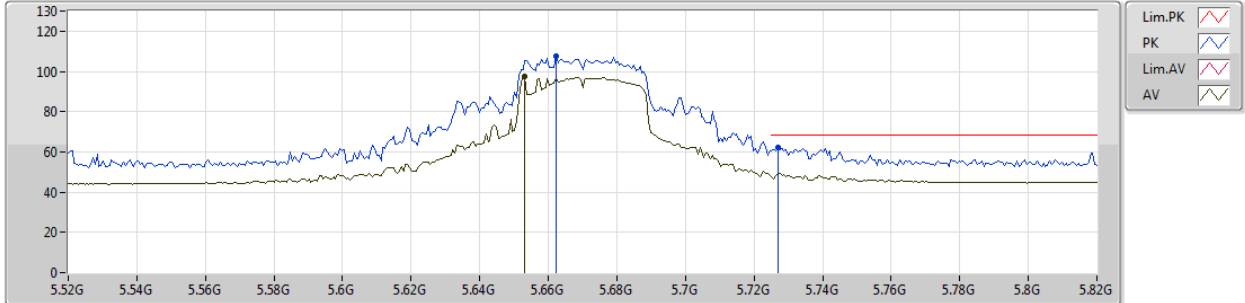
Type	Freq (Hz)	Level (dBuV/m)	Limit (dBuV/m)	Margin (dB)	Factor (dB)	Dist (m)	Condition	Azimuth (°)	Height (m)	Comments
AV	5.6544G	97.54	Inf	-Inf	4.82	3	Vertical	335	1.69	-
PK	5.6724G	103.71	Inf	-Inf	4.85	3	Vertical	335	1.69	-
PK	5.7258G	66.04	68.20	-2.16	4.96	3	Vertical	335	1.69	-



802.11ac VHT40-BF_Nss1,(MCS0)_2TX

21/03/2019

5670MHz_TX

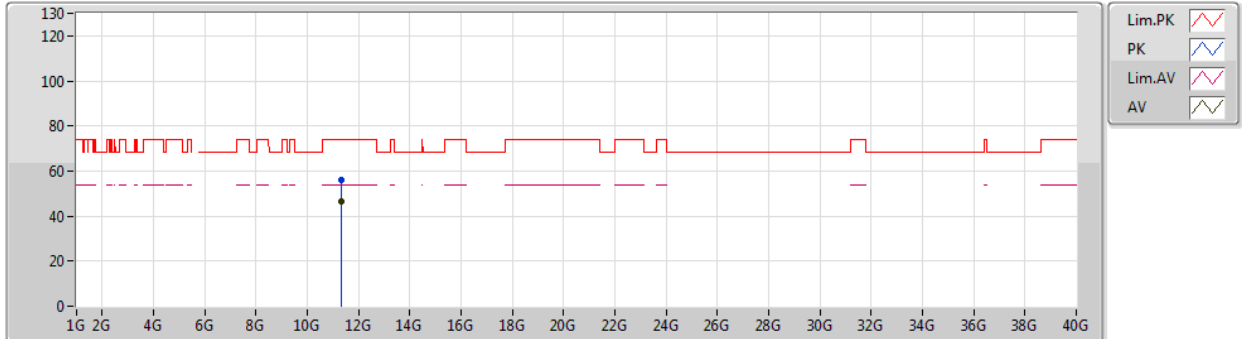


Type	Freq (Hz)	Level (dBuV/m)	Limit (dBuV/m)	Margin (dB)	Factor (dB)	Dist (m)	Condition	Azimuth (°)	Height (m)	Comments
AV	5.6532G	97.48	Inf	-Inf	4.81	3	Horizontal	357	1.43	-
PK	5.6622G	107.49	Inf	-Inf	4.83	3	Horizontal	357	1.43	-
PK	5.727G	62.32	68.20	-5.88	4.96	3	Horizontal	357	1.43	-

802.11ac VHT40-BF_Nss1,(MCS0)_2TX

21/03/2019

5670MHz_TX

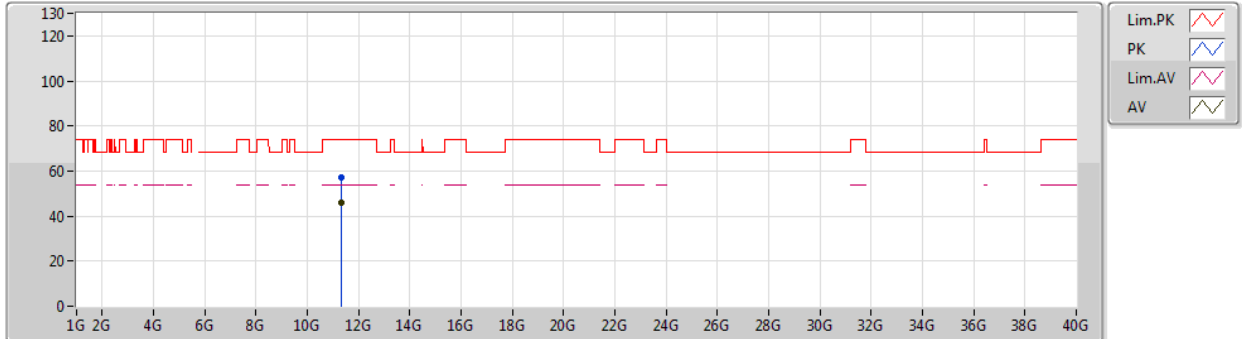


Type	Freq (Hz)	Level (dBuV/m)	Limit (dBuV/m)	Margin (dB)	Factor (dB)	Dist (m)	Condition	Azimuth (°)	Height (m)	Comment
AV	11.32566G	46.52	54.00	-7.48	13.73	3	Vertical	146	1.62	-
PK	11.34954G	55.80	74.00	-18.20	13.71	3	Vertical	146	1.62	-

802.11ac VHT40-BF_Nss1,(MCS0)_2TX

21/03/2019

5670MHz_TX



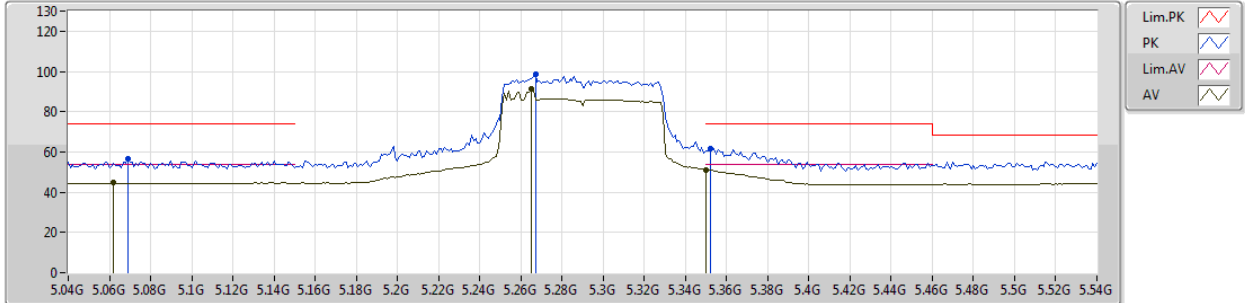
Type	Freq (Hz)	Level (dBuV/m)	Limit (dBuV/m)	Margin (dB)	Factor (dB)	Dist (m)	Condition	Azimuth (°)	Height (m)	Comment
AV	11.33982G	45.77	54.00	-8.23	13.71	3	Horizontal	256	2.63	-
PK	11.33406G	57.02	74.00	-16.98	13.72	3	Horizontal	256	2.63	-



802.11ac VHT80-BF_Nss1,(MCS0)_2TX

21/03/2019

5290MHz_TX



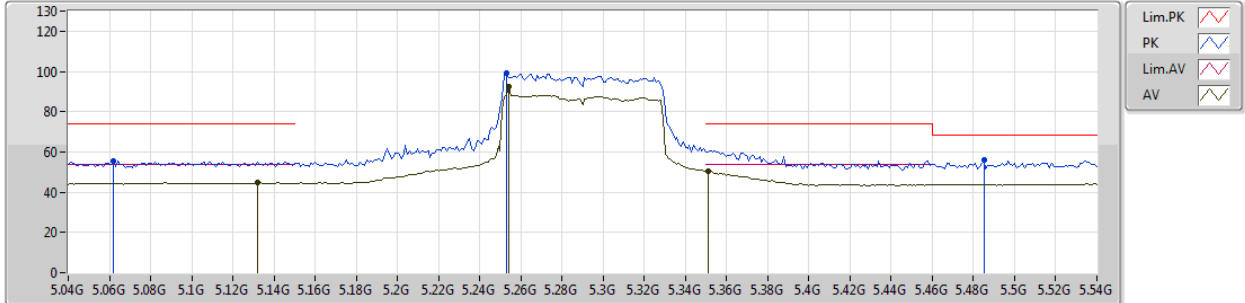
Type	Freq (Hz)	Level (dBuV/m)	Limit (dBuV/m)	Margin (dB)	Factor (dB)	Dist (m)	Condition	Azimuth (°)	Height (m)	Comments
AV	5.062G	44.63	54.00	-9.37	3.99	3	Vertical	278	1.87	-
AV	5.265G	91.46	Inf	-Inf	4.23	3	Vertical	278	1.87	-
AV	5.35G	51.04	54.00	-2.96	4.32	3	Vertical	278	1.87	-
PK	5.069G	56.32	74.00	-17.68	3.99	3	Vertical	278	1.87	-
PK	5.267G	98.52	Inf	-Inf	4.23	3	Vertical	278	1.87	-
PK	5.352G	61.39	74.00	-12.61	4.32	3	Vertical	278	1.87	-



802.11ac VHT80-BF_Nss1,(MCS0)_2TX

21/03/2019

5290MHz_TX



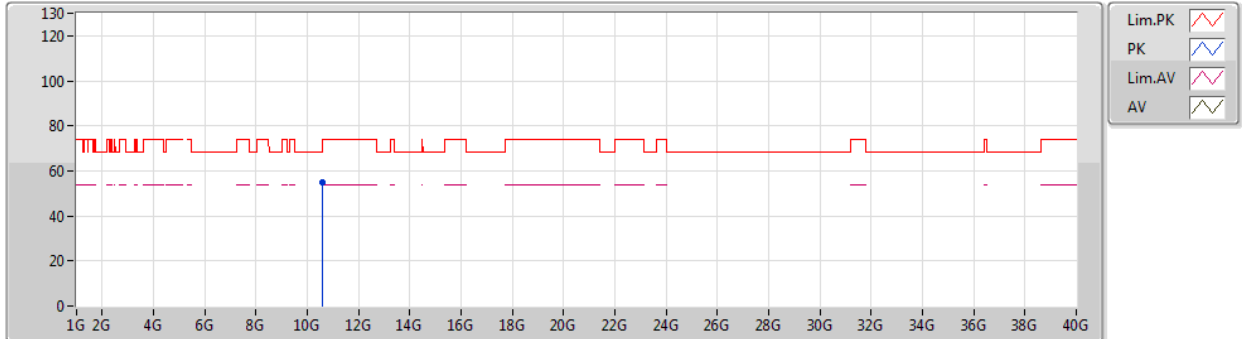
Type	Freq (Hz)	Level (dBuV/m)	Limit (dBuV/m)	Margin (dB)	Factor (dB)	Dist (m)	Condition	Azimuth (°)	Height (m)	Comments
AV	5.132G	44.64	54.00	-9.36	4.07	3	Horizontal	63	1.50	-
AV	5.254G	92.25	Inf	-Inf	4.21	3	Horizontal	63	1.50	-
AV	5.351G	50.71	54.00	-3.29	4.32	3	Horizontal	63	1.50	-
PK	5.062G	55.62	74.00	-18.38	3.99	3	Horizontal	63	1.50	-
PK	5.253G	99.38	Inf	-Inf	4.21	3	Horizontal	63	1.50	-
PK	5.485G	55.76	68.20	-12.44	4.48	3	Horizontal	63	1.50	-



802.11ac VHT80-BF_Nss1,(MCS0)_2TX

20/03/2019

5290MHz_TX



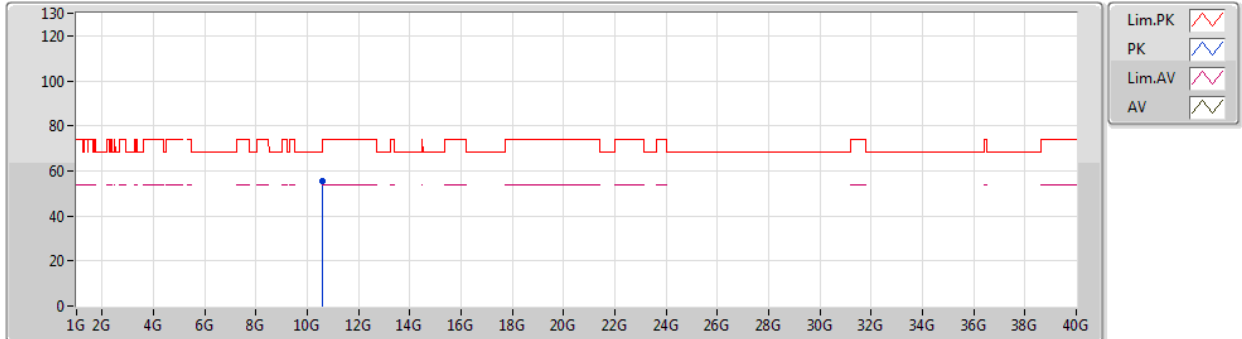
Type	Freq (Hz)	Level (dBuV/m)	Limit (dBuV/m)	Margin (dB)	Factor (dB)	Dist (m)	Condition	Azimuth (°)	Height (m)	Comment
PK	10.58024G	54.92	68.20	-13.28	13.11	3	Vertical	64	1.53	-



802.11ac VHT80-BF_Nss1,(MCS0)_2TX

20/03/2019

5290MHz_TX



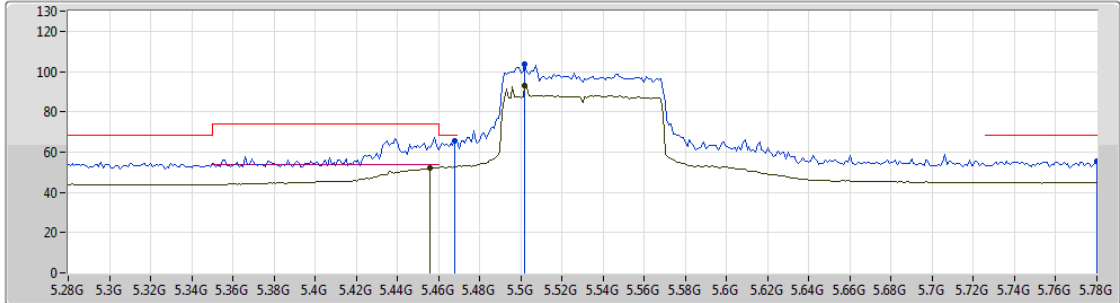
Type	Freq (Hz)	Level (dBuV/m)	Limit (dBuV/m)	Margin (dB)	Factor (dB)	Dist (m)	Condition	Azimuth (°)	Height (m)	Comment
PK	10.58G	55.68	68.20	-12.52	13.11	3	Horizontal	321	1.50	-



802.11ac VHT80-BF_Nss1,(MCS0)_2TX

22/03/2019

5530MHz_TX



Legend for the spectrum plot:

- Lim.PK
- PK
- Lim.AV
- AV

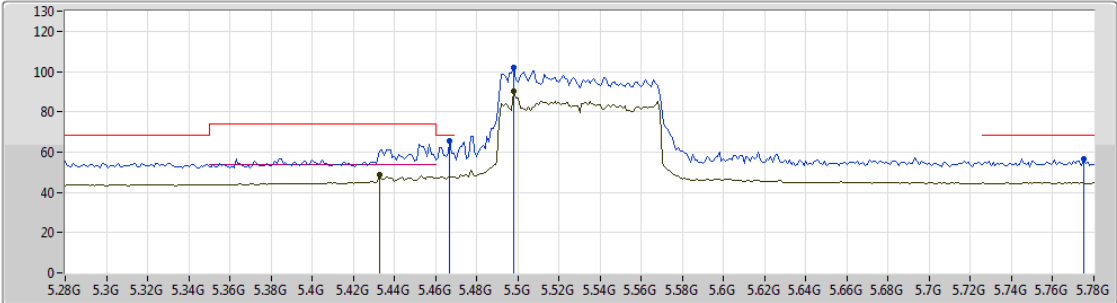
Type	Freq (Hz)	Level (dBuV/m)	Limit (dBuV/m)	Margin (dB)	Factor (dB)	Dist (m)	Condition	Azimuth (°)	Height (m)	Comments
AV	5.456G	52.31	54.00	-1.69	4.45	3	Vertical	344	1.57	-
AV	5.502G	92.77	Inf	-Inf	4.50	3	Vertical	344	1.57	-
PK	5.468G	65.48	68.20	-2.72	4.47	3	Vertical	344	1.57	-
PK	5.502G	103.61	Inf	-Inf	4.50	3	Vertical	344	1.57	-
PK	5.78G	55.62	68.20	-12.58	5.06	3	Vertical	344	1.57	-



802.11ac VHT80-BF_Nss1,(MCS0)_2TX

22/03/2019

5530MHz_TX



Legend for the spectrum plot:

- Lim.PK
- PK
- Lim.AV
- AV

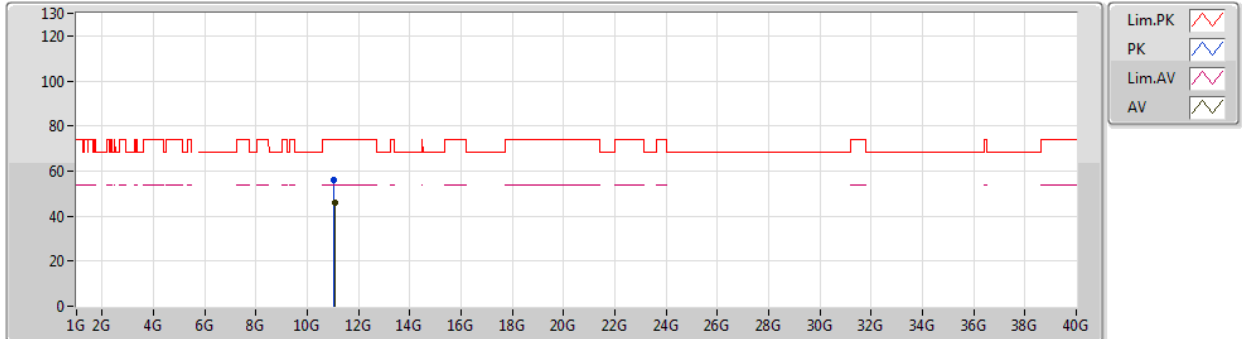
Type	Freq (Hz)	Level (dBuV/m)	Limit (dBuV/m)	Margin (dB)	Factor (dB)	Dist (m)	Condition	Azimuth (°)	Height (m)	Comments
AV	5.433G	48.51	54.00	-5.49	4.42	3	Horizontal	355	1.05	-
AV	5.498G	90.34	Inf	-Inf	4.50	3	Horizontal	355	1.05	-
PK	5.467G	65.84	68.20	-2.36	4.47	3	Horizontal	355	1.05	-
PK	5.498G	101.81	Inf	-Inf	4.50	3	Horizontal	355	1.05	-
PK	5.775G	56.64	68.20	-11.56	5.07	3	Horizontal	355	1.05	-



802.11ac VHT80-BF_Nss1,(MCS0)_2TX

21/03/2019

5530MHz_TX



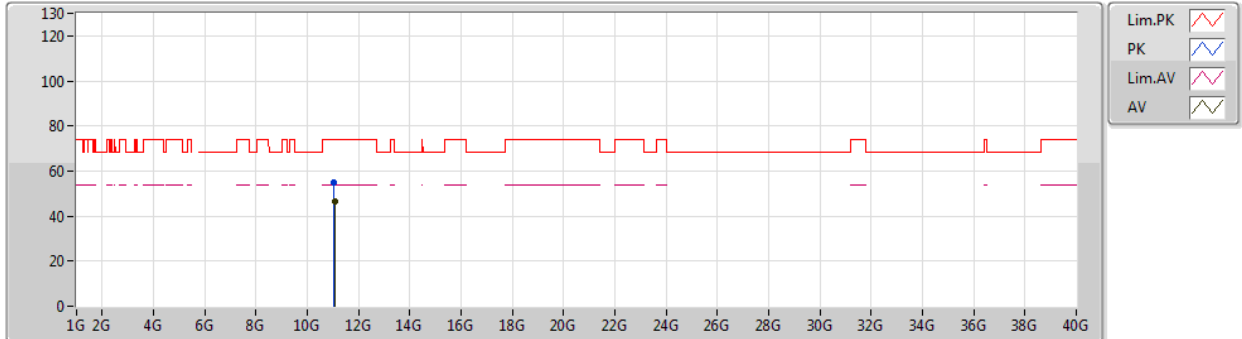
Type	Freq (Hz)	Level (dBuV/m)	Limit (dBuV/m)	Margin (dB)	Factor (dB)	Dist (m)	Condition	Azimuth (°)	Height (m)	Comment
AV	11.06006G	45.97	54.00	-8.03	13.97	3	Vertical	191	3.00	-
PK	11.04554G	55.76	74.00	-18.24	14.00	3	Vertical	191	3.00	-



802.11ac VHT80-BF_Nss1,(MCS0)_2TX

21/03/2019

5530MHz_TX



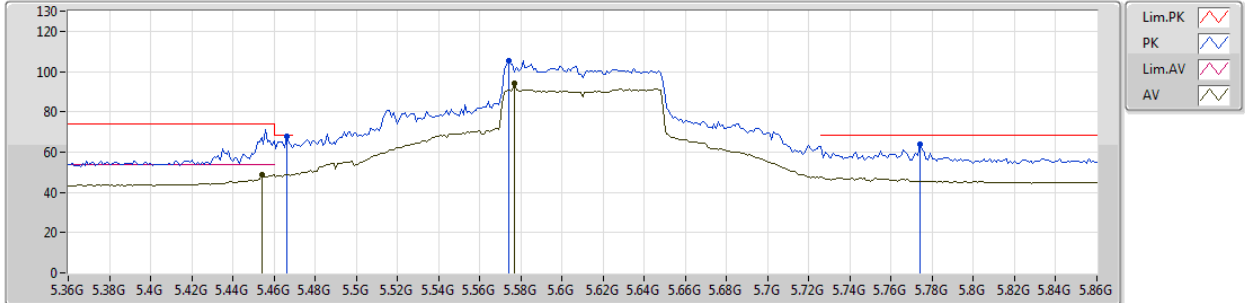
Type	Freq (Hz)	Level (dBuV/m)	Limit (dBuV/m)	Margin (dB)	Factor (dB)	Dist (m)	Condition	Azimuth (°)	Height (m)	Comment
AV	11.05982G	46.47	54.00	-7.53	13.97	3	Horizontal	247	1.50	-
PK	11.05358G	55.16	74.00	-18.84	13.98	3	Horizontal	247	1.50	-



802.11ac VHT80-BF_Nss1,(MCS0)_2TX

22/03/2019

5610MHz_TX



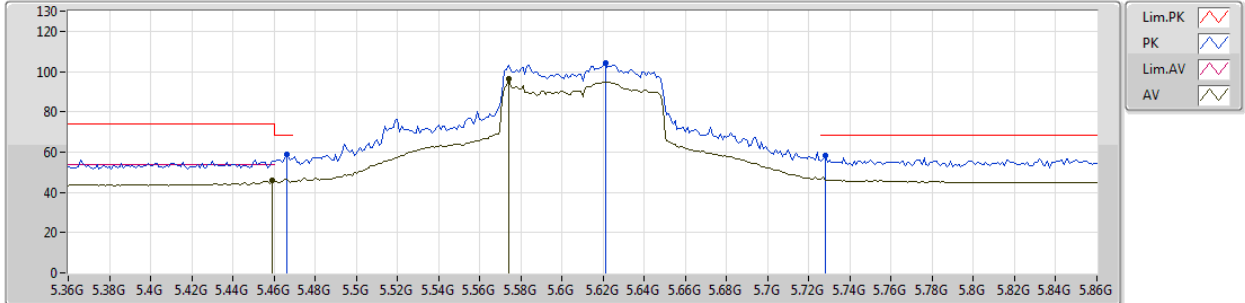
Type	Freq (Hz)	Level (dBuV/m)	Limit (dBuV/m)	Margin (dB)	Factor (dB)	Dist (m)	Condition	Azimuth (°)	Height (m)	Comments
AV	5.454G	48.80	54.00	-5.20	4.45	3	Vertical	355	1.11	-
AV	5.577G	94.06	Inf	-Inf	4.66	3	Vertical	355	1.11	-
PK	5.466G	67.82	68.20	-0.38	4.46	3	Vertical	355	1.11	-
PK	5.574G	105.57	Inf	-Inf	4.65	3	Vertical	355	1.11	-
PK	5.774G	63.96	68.20	-4.24	5.06	3	Vertical	355	1.11	-



802.11ac VHT80-BF_Nss1,(MCS0)_2TX

22/03/2019

5610MHz_TX

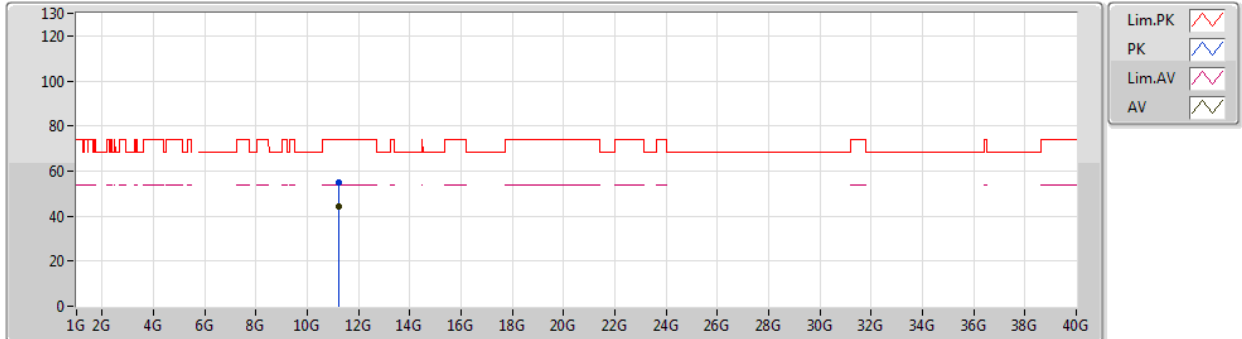


Type	Freq (Hz)	Level (dBuV/m)	Limit (dBuV/m)	Margin (dB)	Factor (dB)	Dist (m)	Condition	Azimuth (°)	Height (m)	Comments
AV	5.459G	46.02	54.00	-7.98	4.46	3	Horizontal	1	1.50	-
AV	5.574G	96.31	Inf	-Inf	4.65	3	Horizontal	1	1.50	-
PK	5.466G	59.04	68.20	-9.16	4.46	3	Horizontal	1	1.50	-
PK	5.621G	104.13	Inf	-Inf	4.75	3	Horizontal	1	1.50	-
PK	5.728G	58.53	68.20	-9.67	4.96	3	Horizontal	1	1.50	-

802.11ac VHT80-BF_Nss1,(MCS0)_2TX

21/03/2019

5610MHz_TX



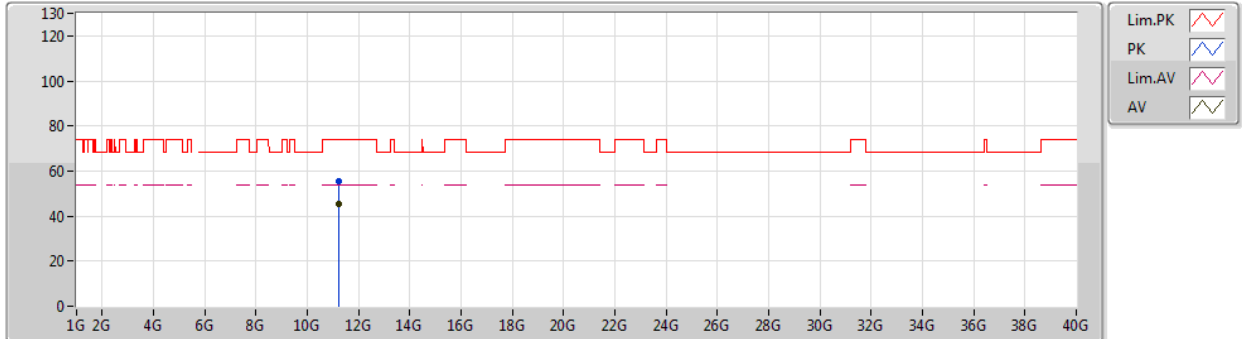
Type	Freq (Hz)	Level (dBuV/m)	Limit (dBuV/m)	Margin (dB)	Factor (dB)	Dist (m)	Condition	Azimuth (°)	Height (m)	Comment
AV	11.21988G	44.15	54.00	-9.85	13.83	3	Vertical	214	1.50	-
PK	11.20902G	55.16	74.00	-18.84	13.84	3	Vertical	214	1.50	-



802.11ac VHT80-BF_Nss1,(MCS0)_2TX

21/03/2019

5610MHz_TX



Type	Freq (Hz)	Level (dBuV/m)	Limit (dBuV/m)	Margin (dB)	Factor (dB)	Dist (m)	Condition	Azimuth (°)	Height (m)	Comment
AV	11.21988G	45.23	54.00	-8.77	13.83	3	Horizontal	6	1.52	-
PK	11.22774G	55.39	74.00	-18.61	13.82	3	Horizontal	6	1.52	-