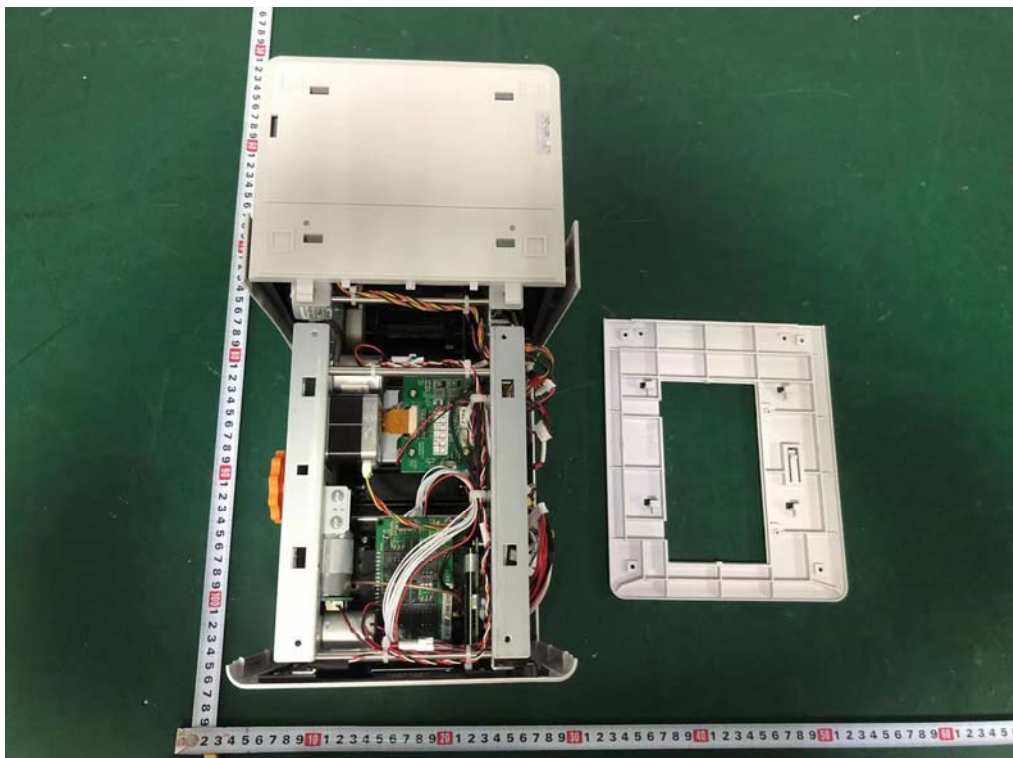
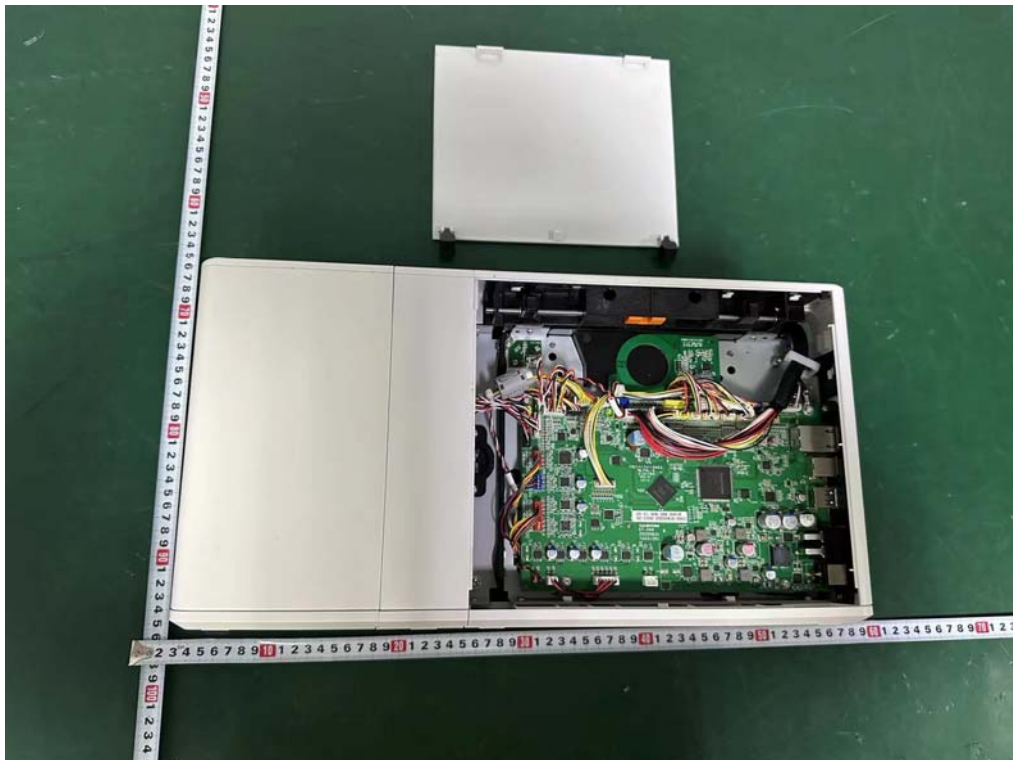


**Internal Photo for models DC-2300, DC-2350, DC-240, DC-250, KT-200**

**Internal Photos**

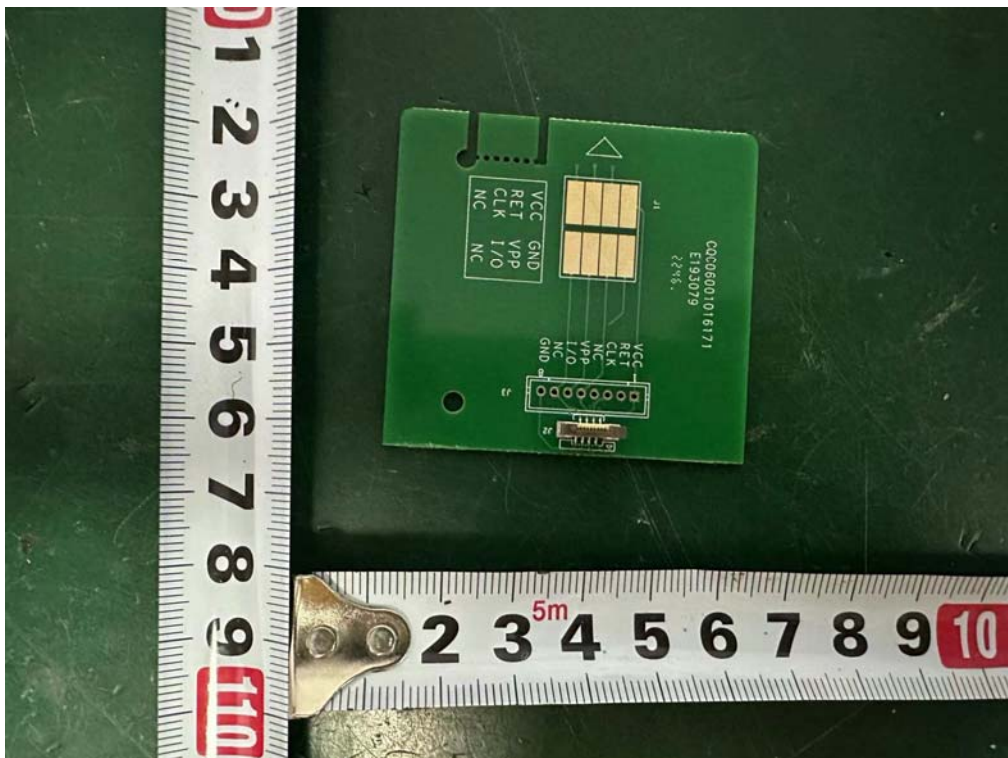
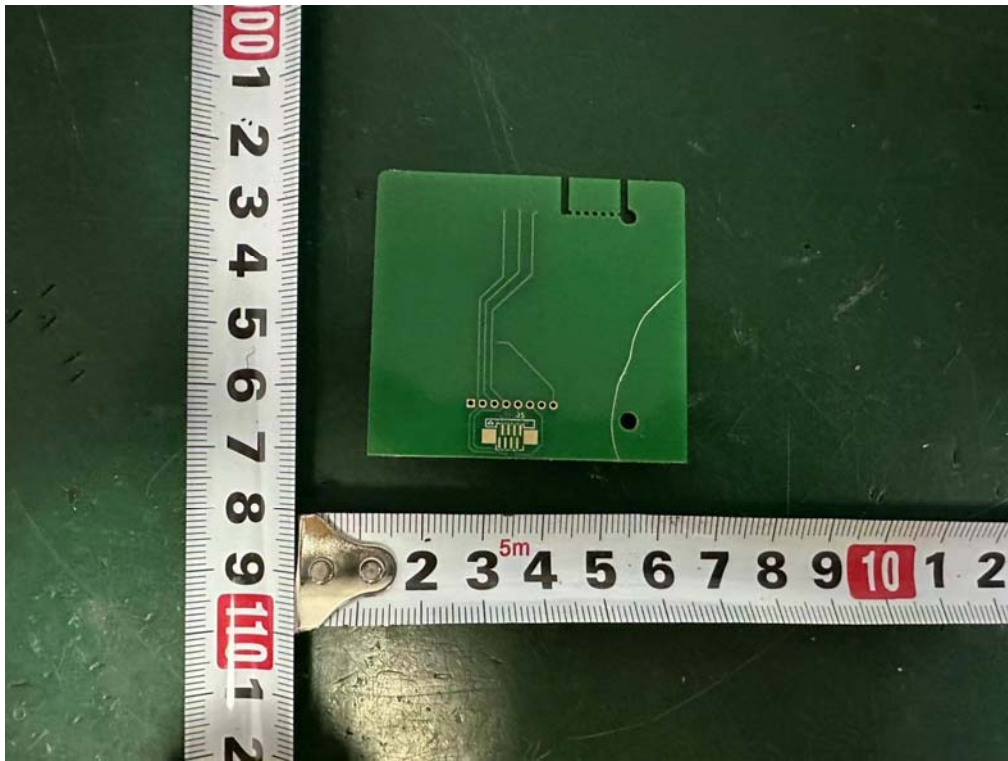


### Internal Photos

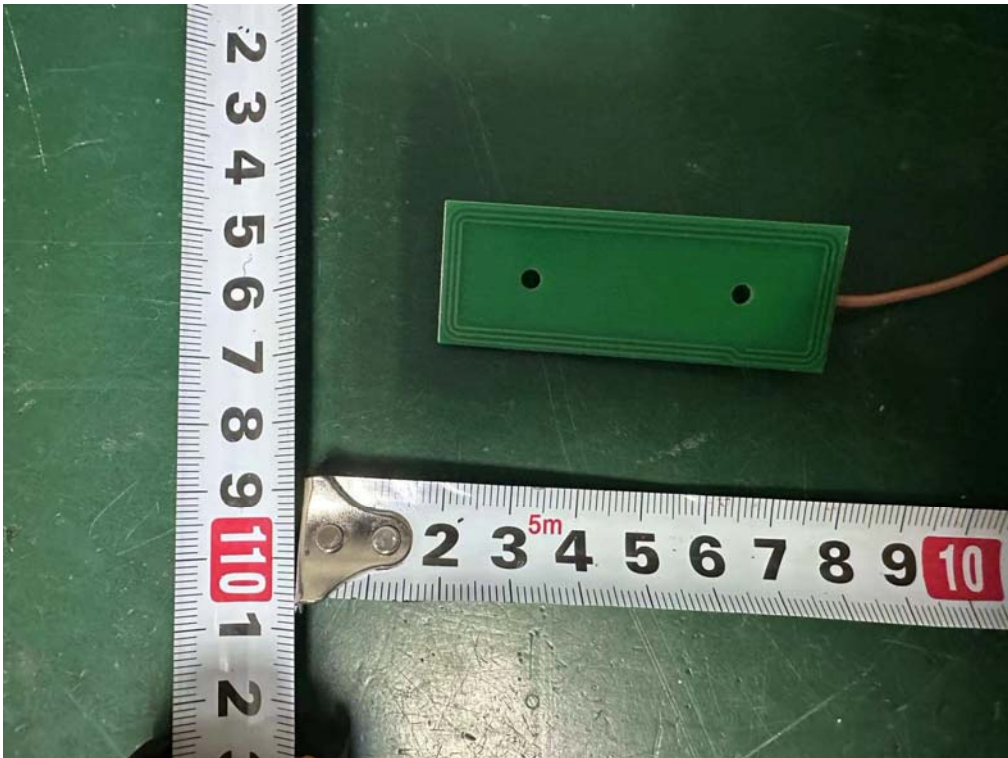
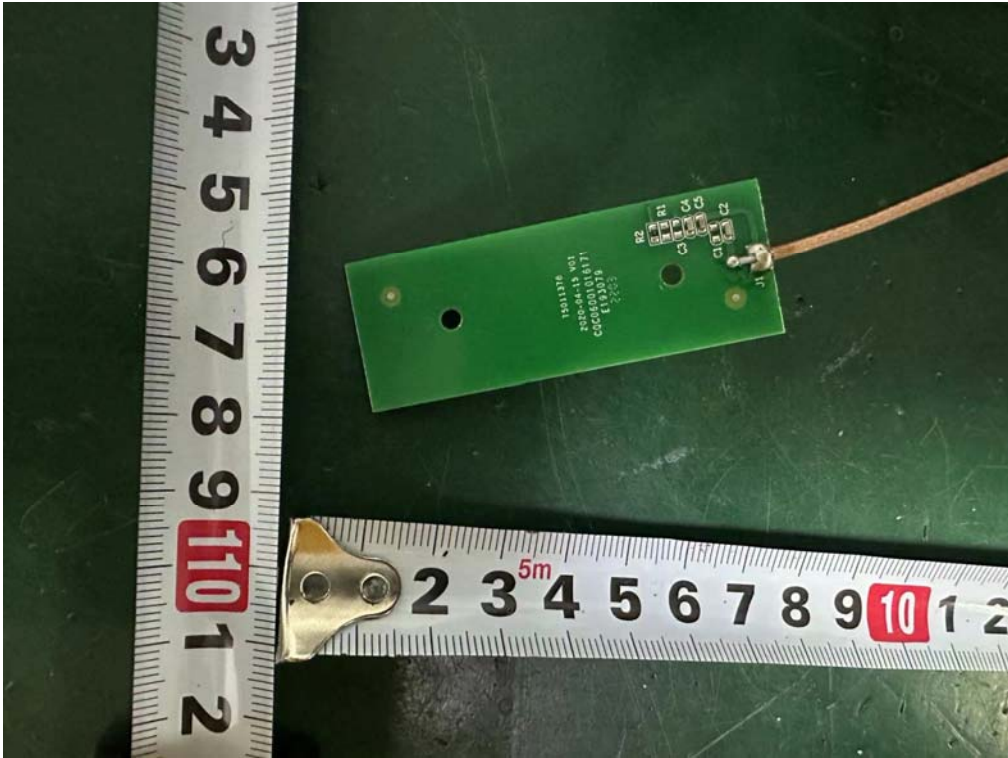




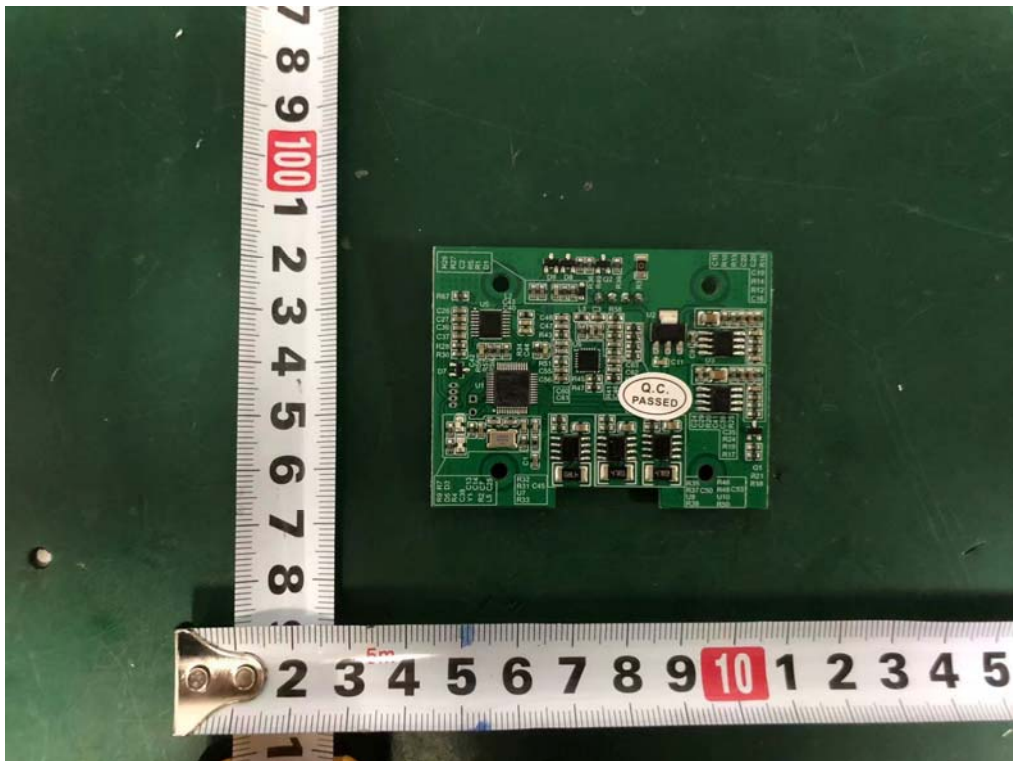
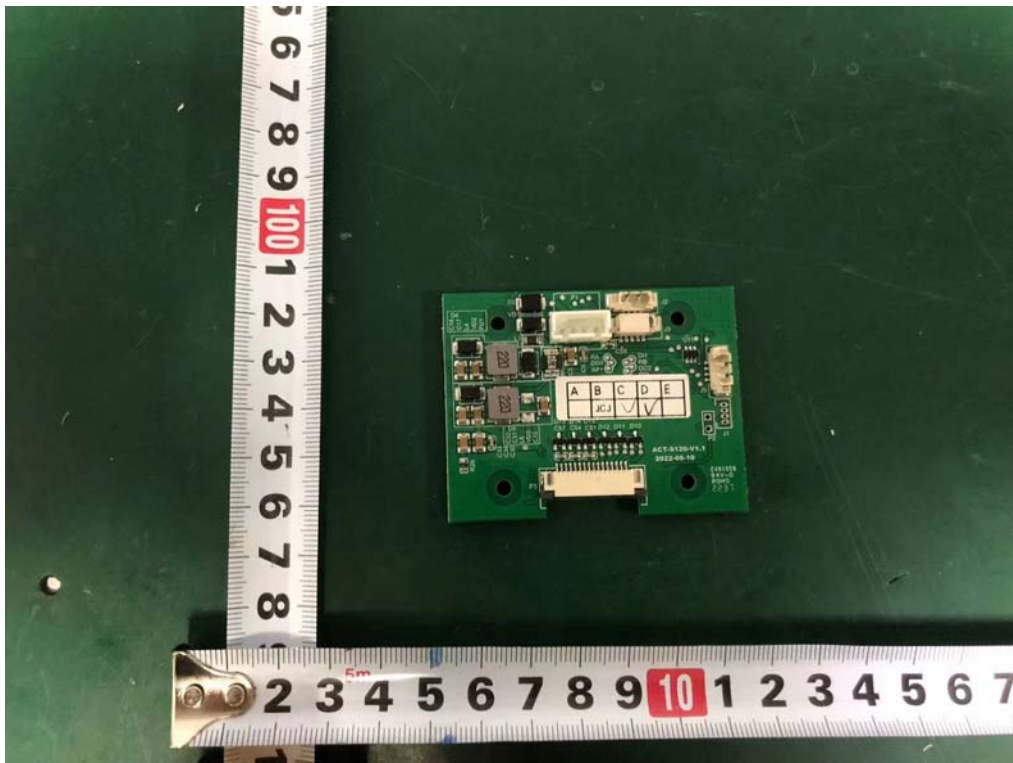
### Internal Photos



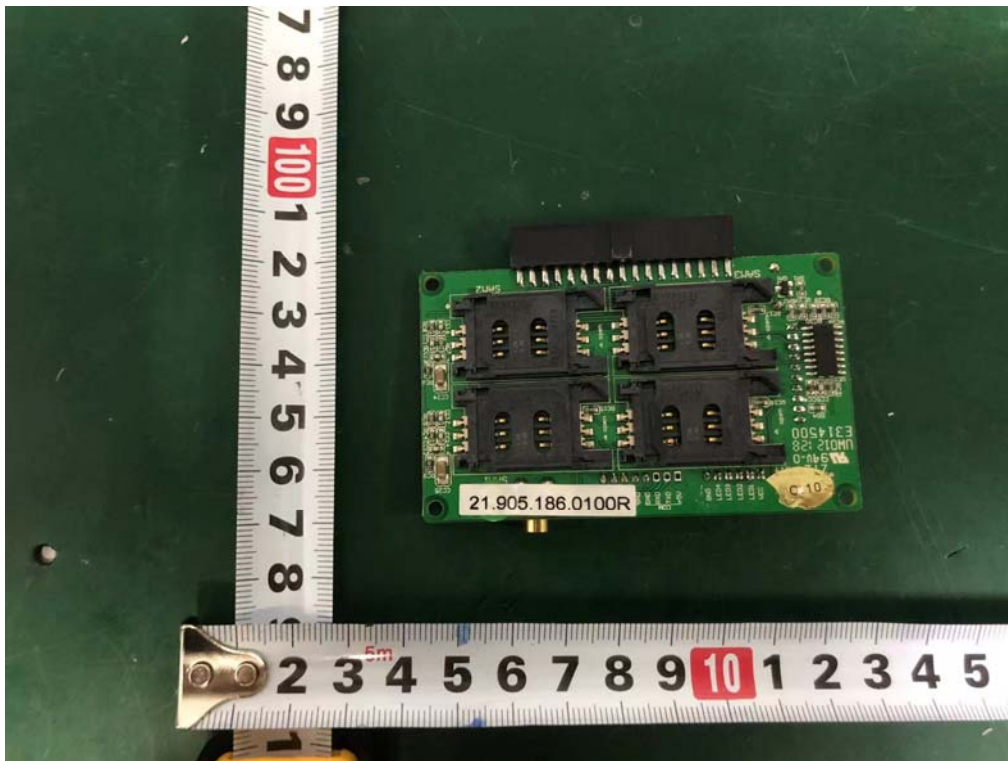
### Internal Photos



### Internal Photos



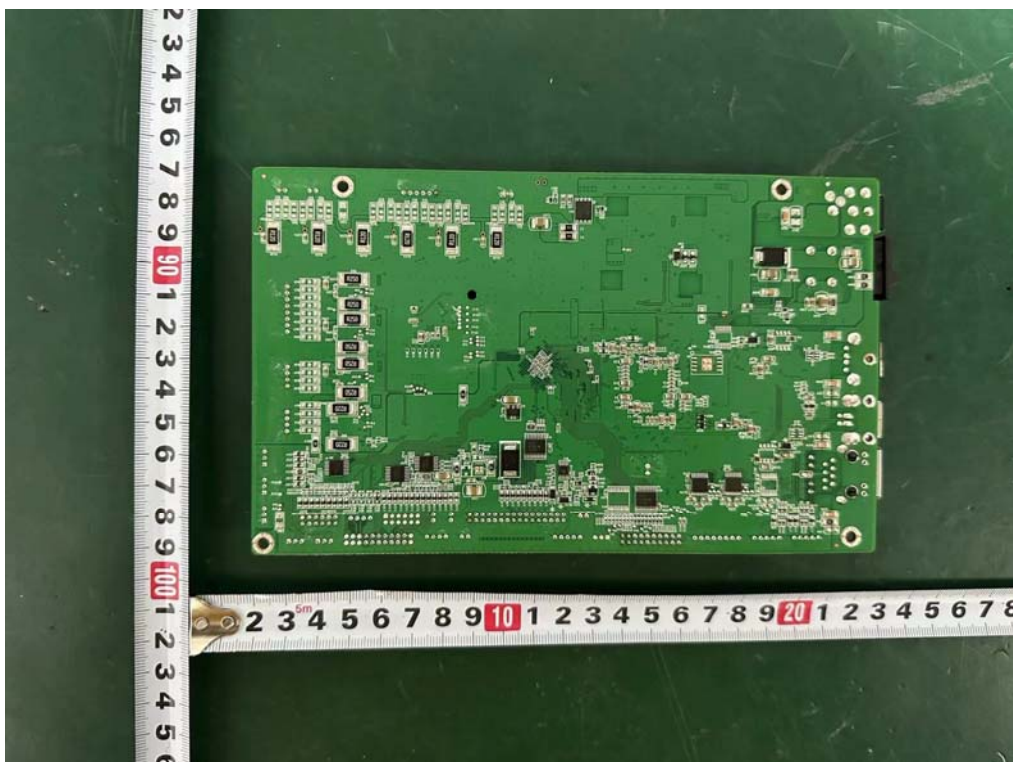
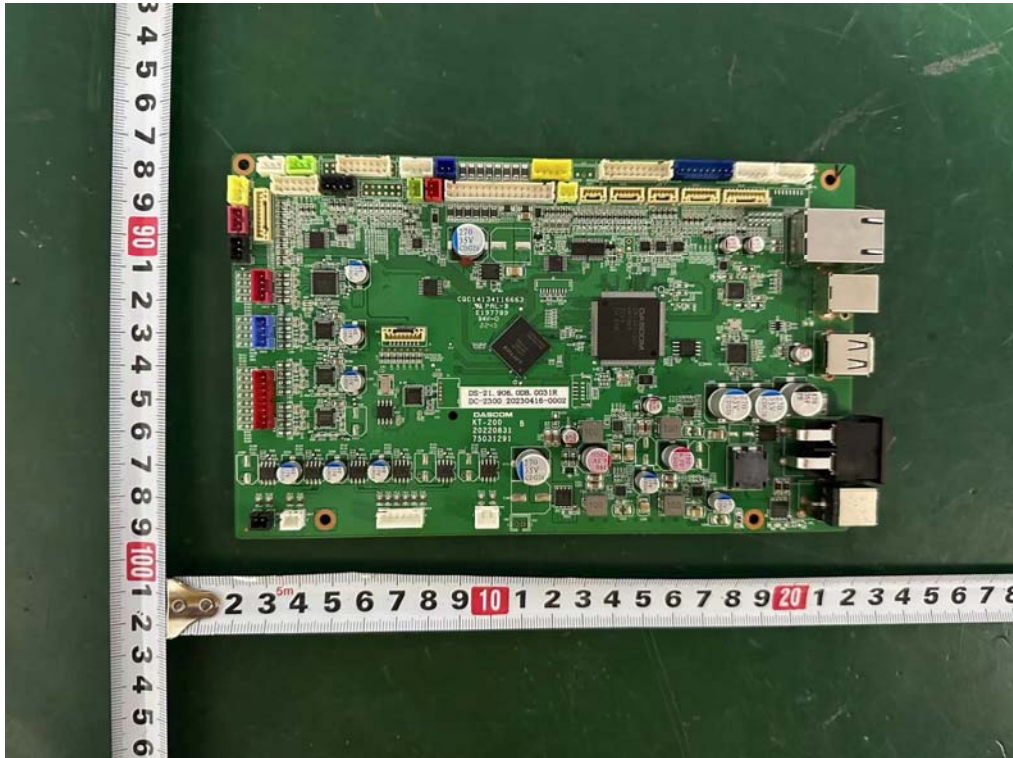
### Internal Photos



Internal add two optional mainboard Photo for all models. The circuit schematic and PCB diagram of the two optional mainboard are the same, the difference is only that I/O interface are different installation way . Internal add two optional mainboard Photo for all models

### Optional mainboard 1 Photo

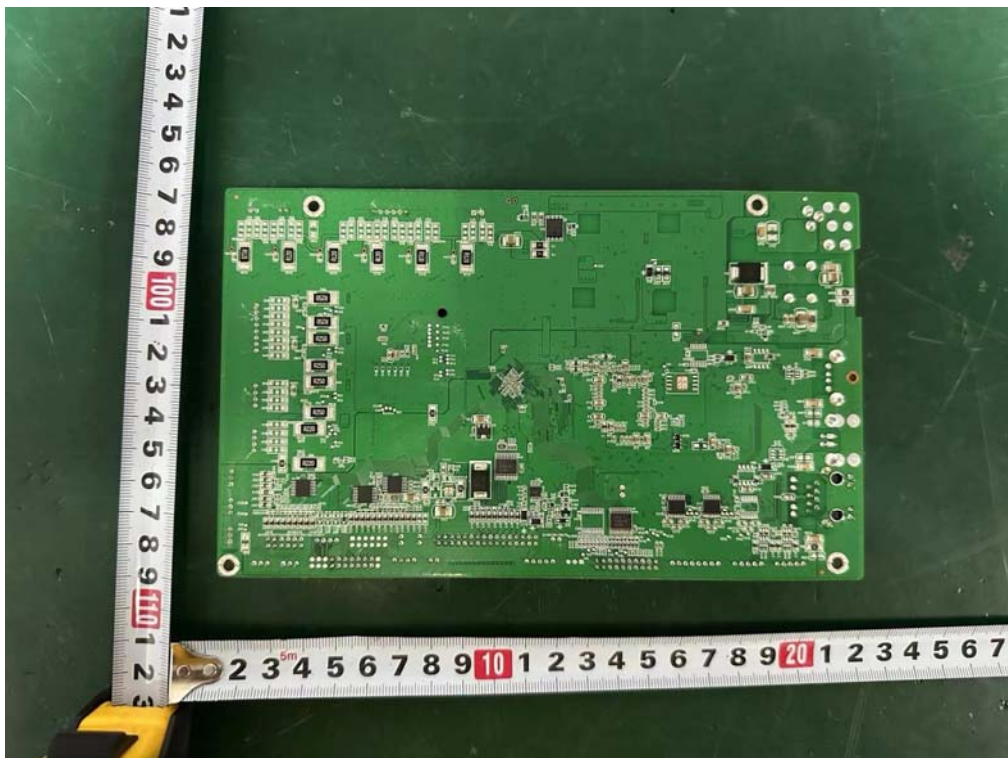
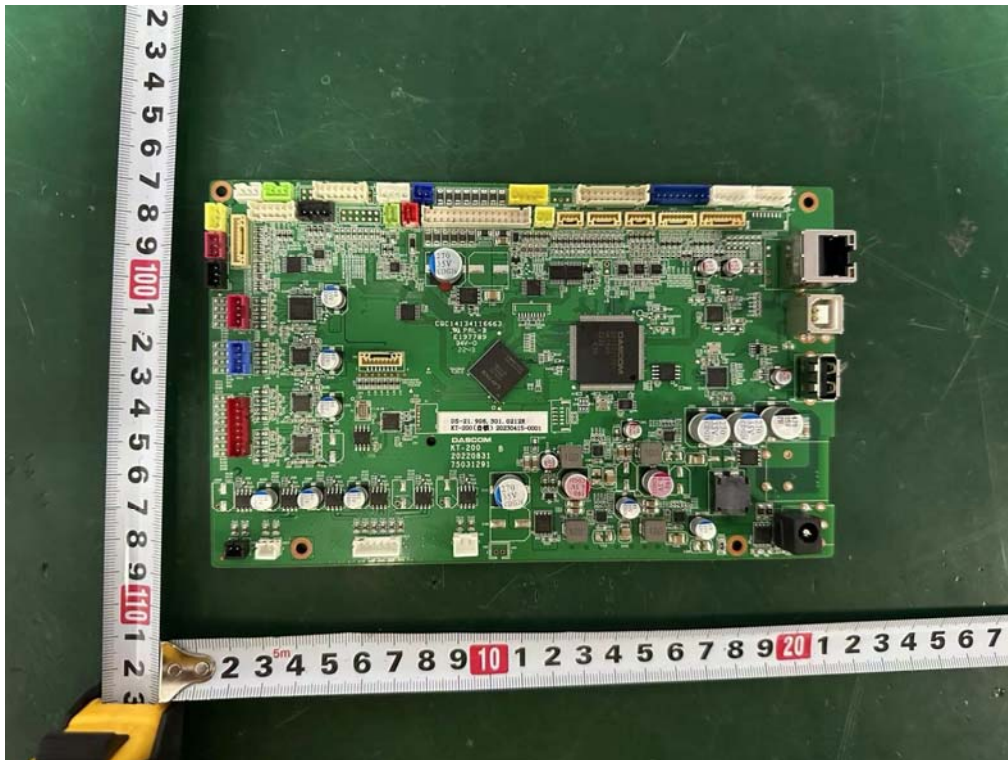
#### Internal Photos





## Optional mainboard 2 Photo

### Internal Photos



**Internal Photo for alternative optional shells**

**Internal Photos**

