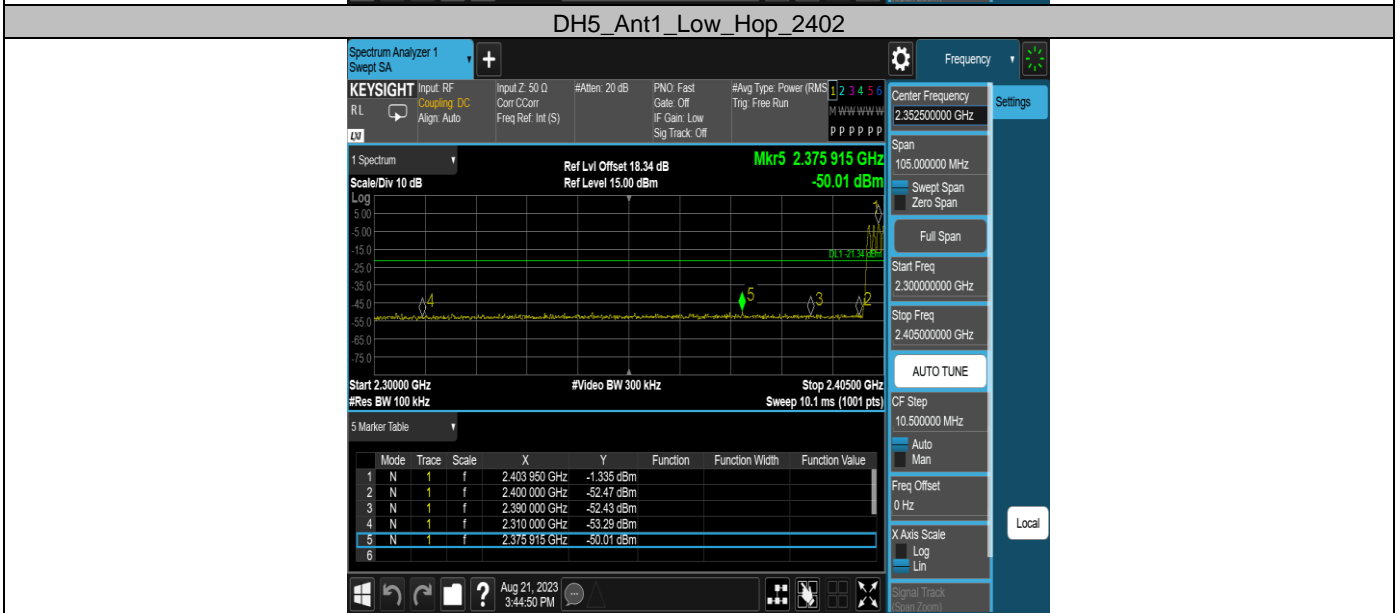
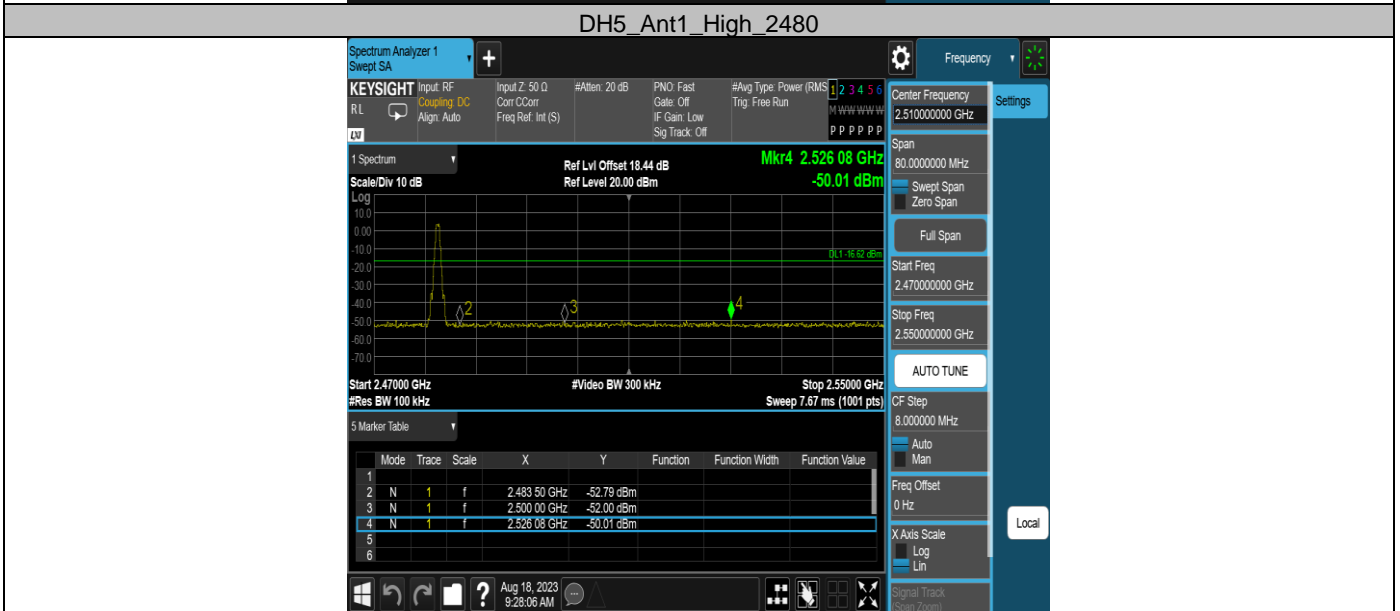
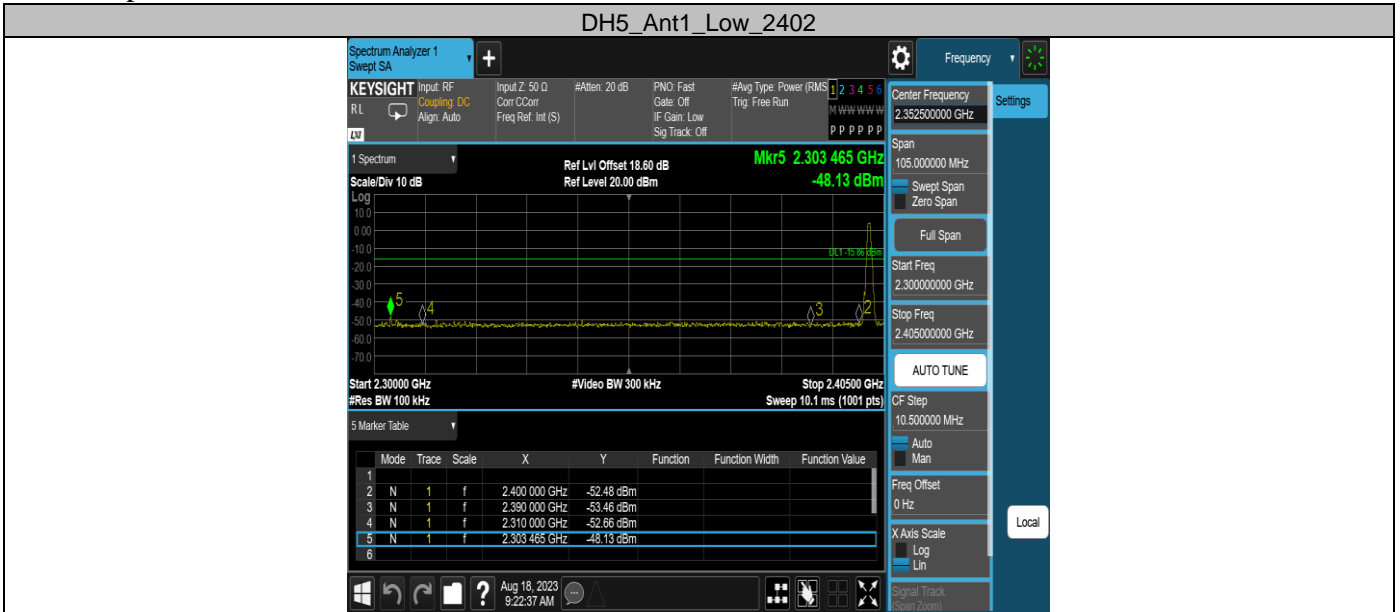


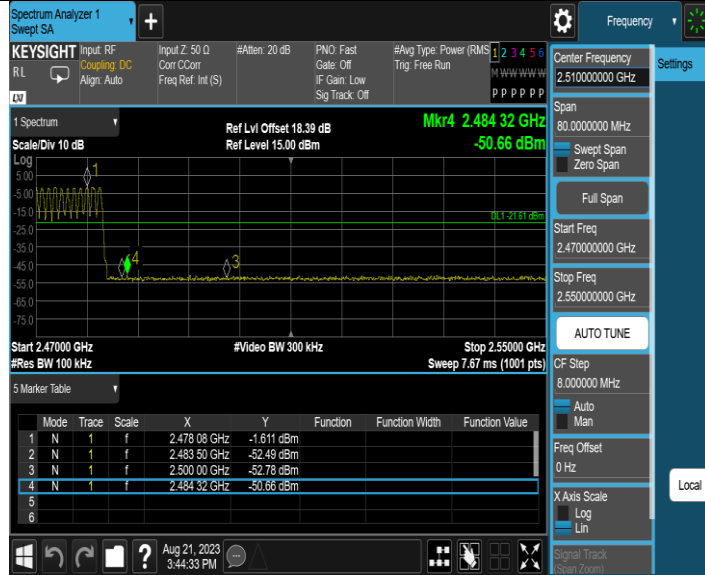
Appendix G: Band edge measurements Test Result

Test Mode	Antenna	Ch Name	Freq(MHz)	Ref Level [dBm]	Result [dBm]	Limit [dBm]	Verdict
DH5	Ant1	Low	2402	4.14	-48.13	≤-15.86	PASS
		High	2480	3.38	-50.01	≤-16.62	PASS
		Low	Hop_2402	-1.34	-50.01	≤-21.34	PASS
		High	Hop_2480	-1.61	-50.66	≤-21.61	PASS
2DH5	Ant1	Low	2402	0.58	-50.14	≤-19.42	PASS
		High	2480	-0.41	-50.31	≤-20.41	PASS
		Low	Hop_2402	-1.79	-50.25	≤-21.79	PASS
		High	Hop_2480	-2.50	-50.05	≤-22.5	PASS
3DH5	Ant1	Low	2402	0.71	-50.29	≤-19.29	PASS
		High	2480	-0.19	-49.02	≤-20.19	PASS
		Low	Hop_2402	-3.12	-50.35	≤-23.12	PASS
		High	Hop_2480	-3.28	-49.77	≤-23.28	PASS

Test Graphs



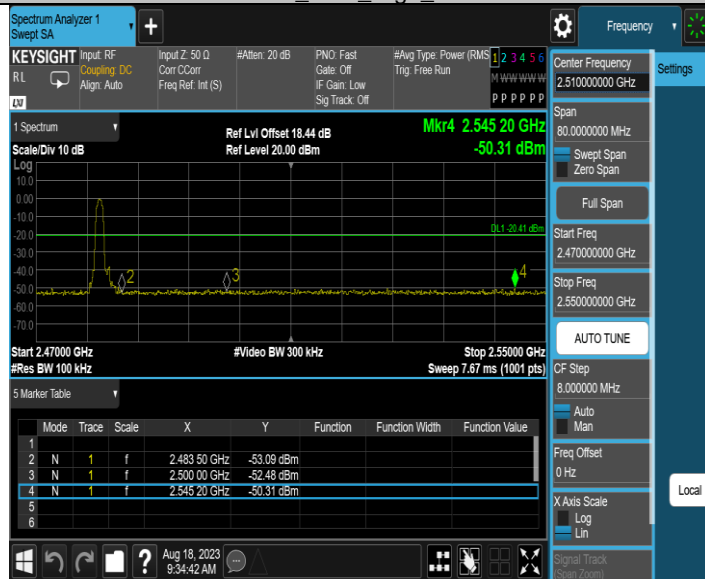
DH5_Ant1_High_Hop_2480



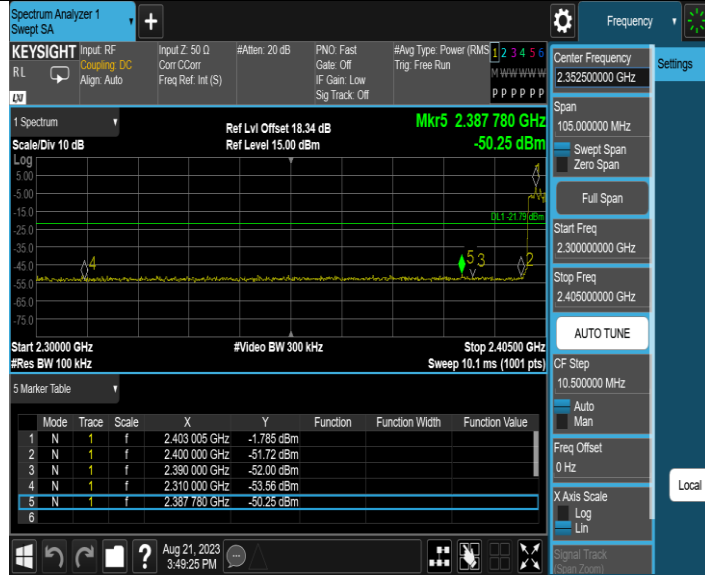
2DH5_Ant1_Low_2402



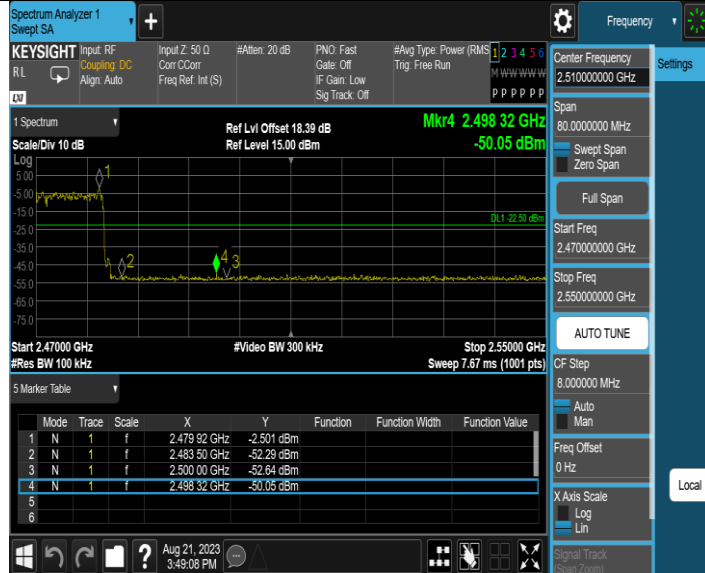
2DH5_Ant1_High_2480



2DH5_Ant1_Low_Hop_2402

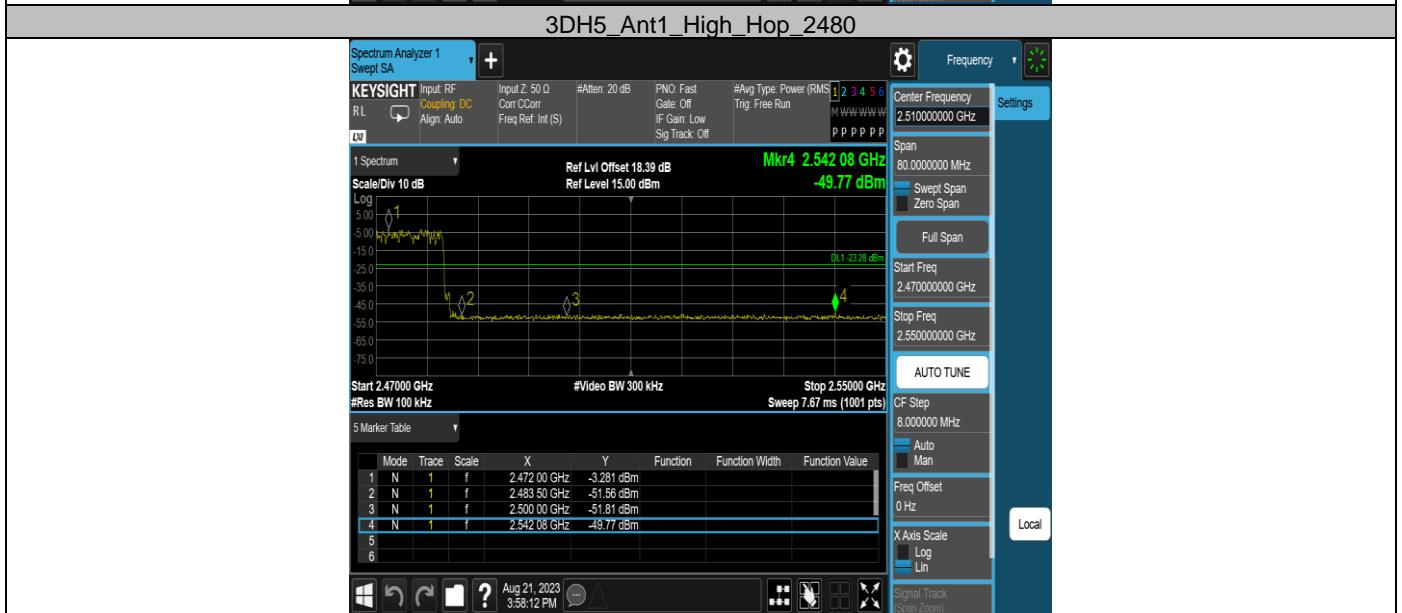
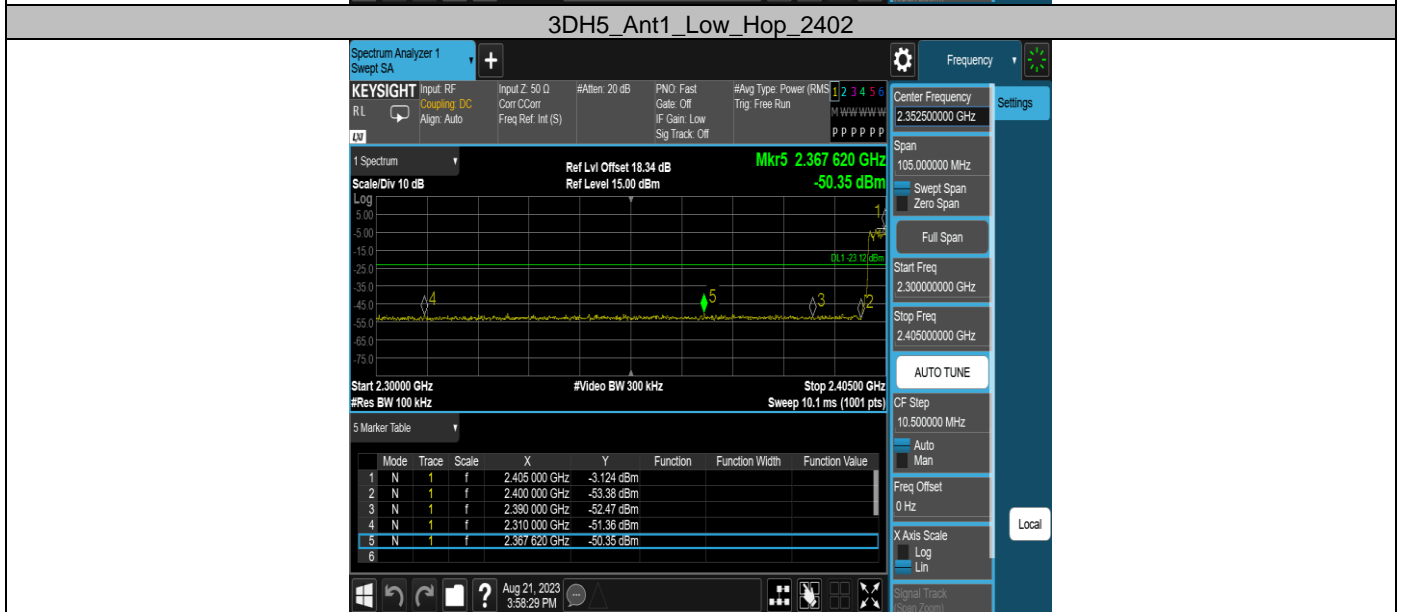
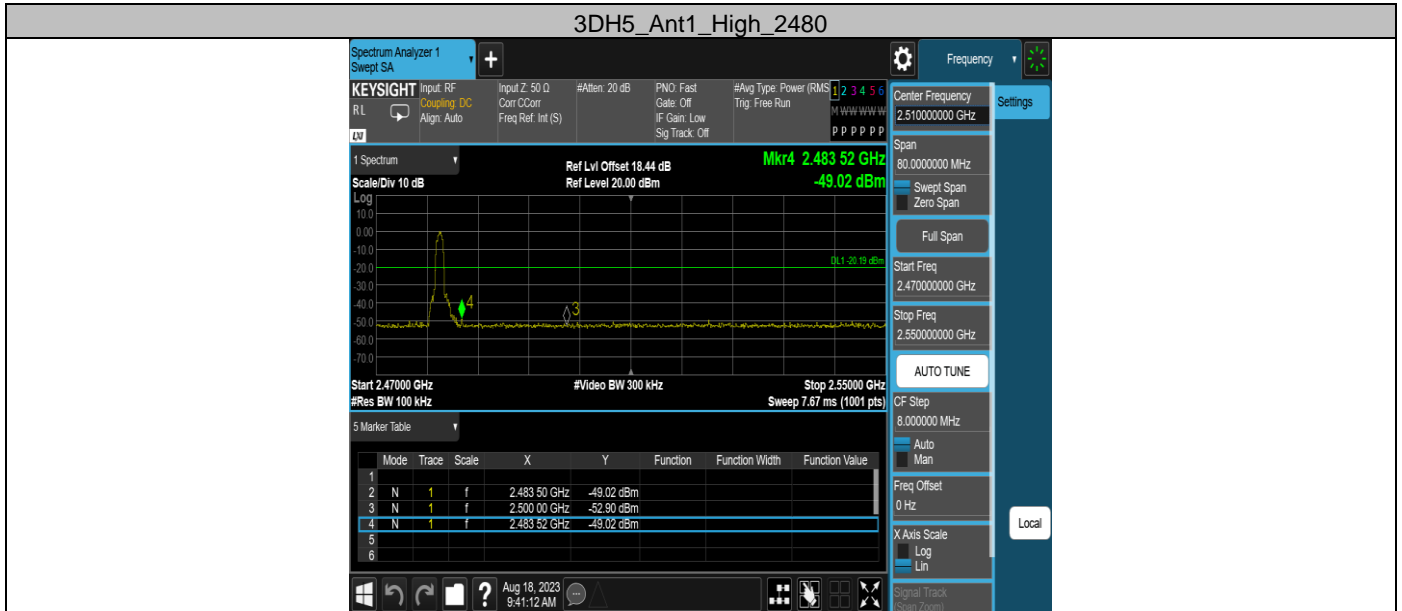


2DH5_Ant1_High_Hop_2480



3DH5_Ant1_Low_2402

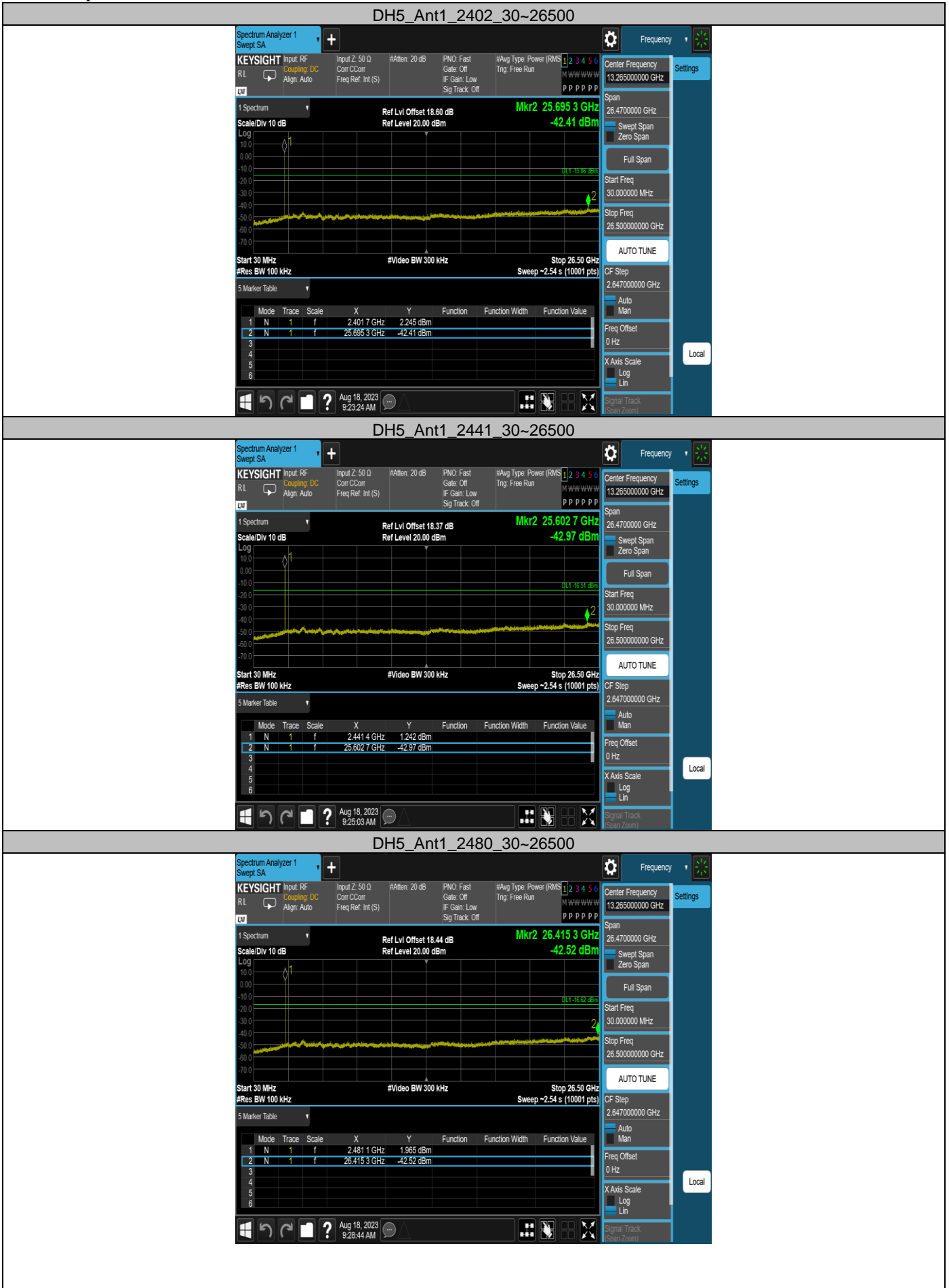


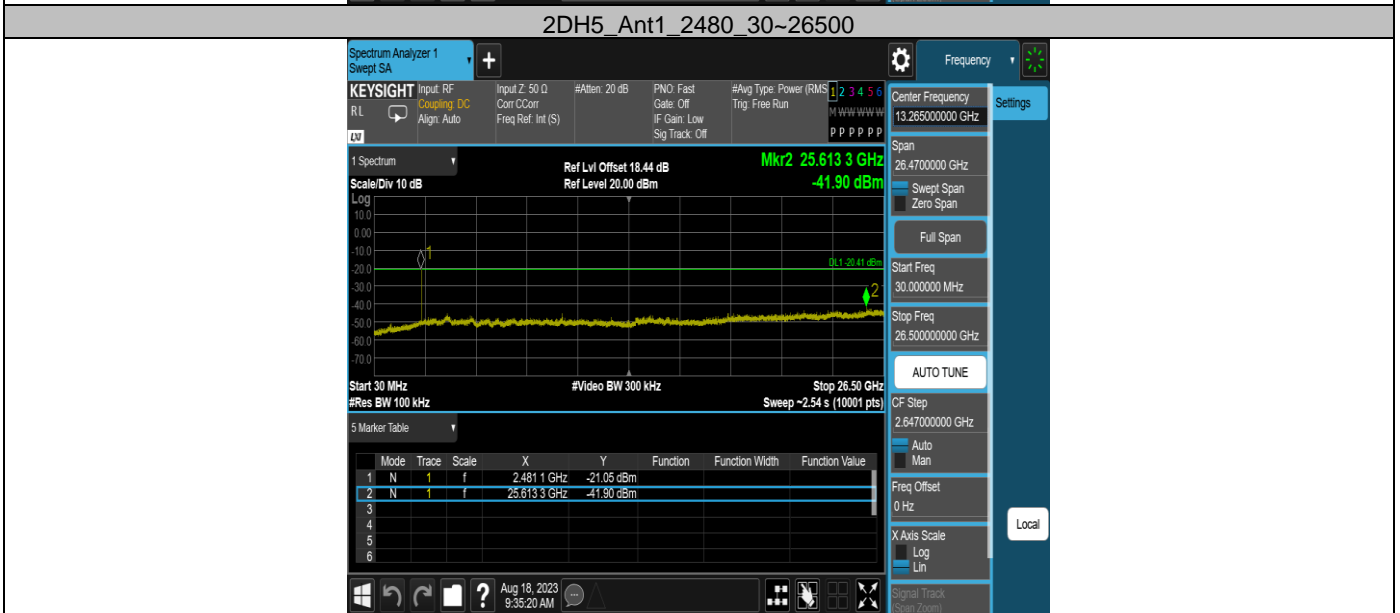
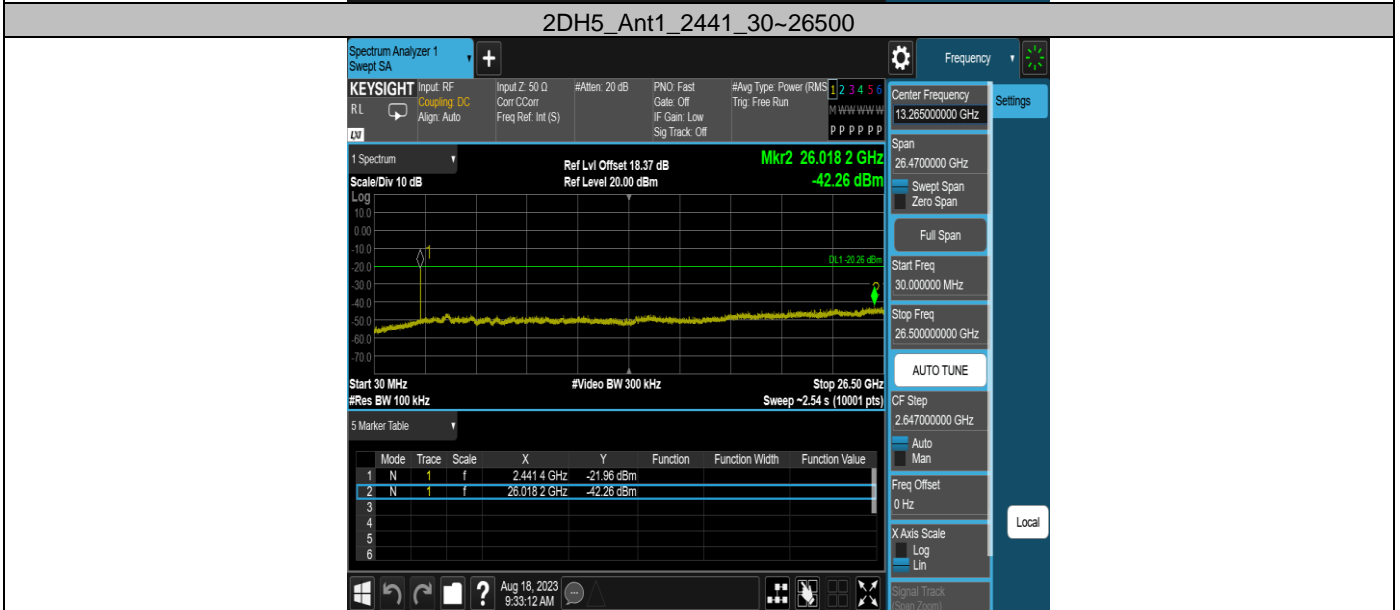
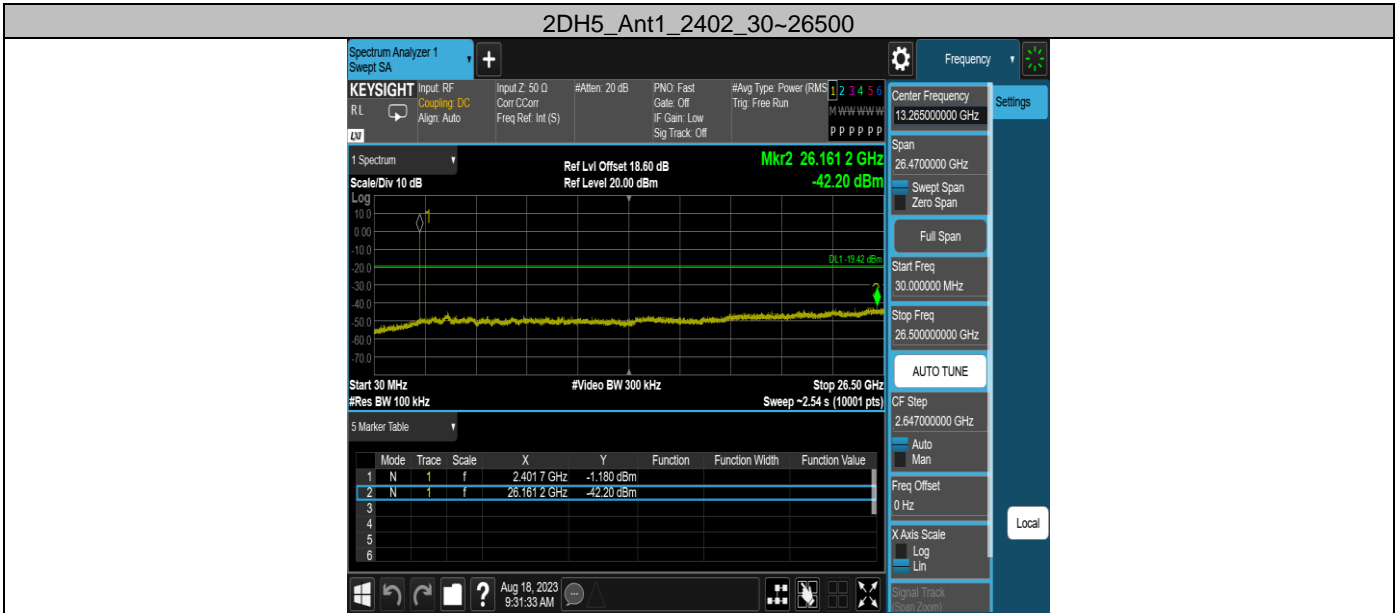


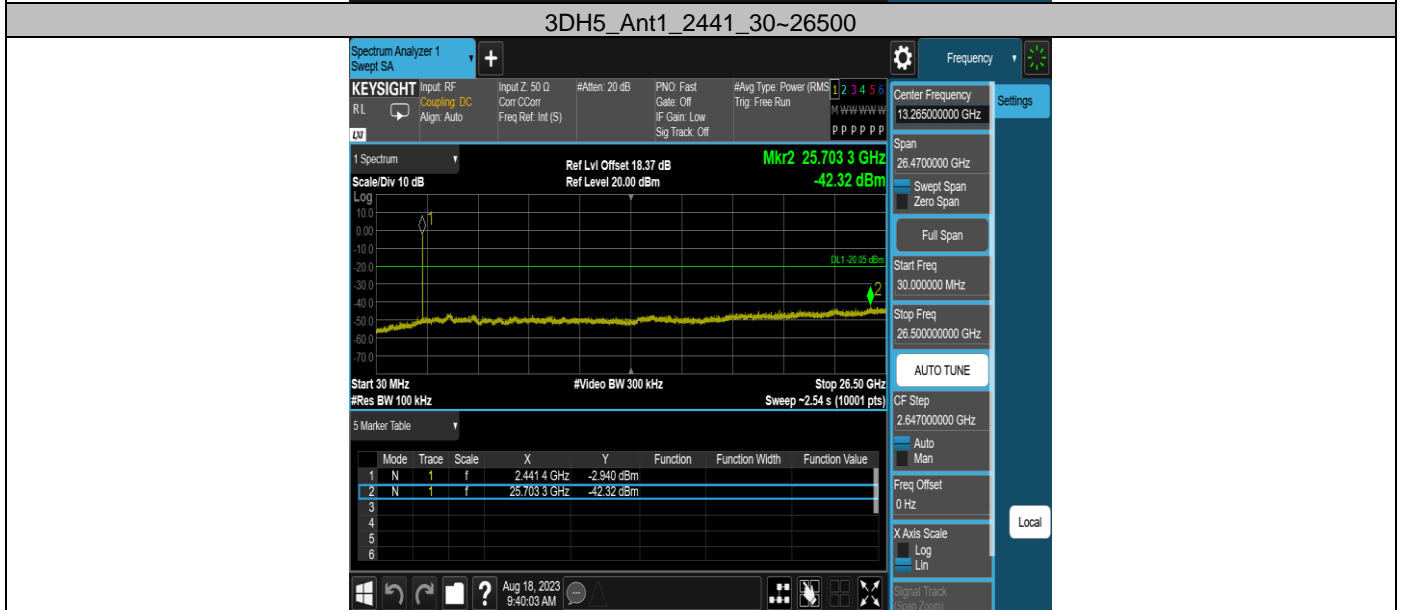
Appendix H: Conducted Spurious Emission Test Result

Test Mode	Antenna	Freq(MHz)	Freq Range [MHz]	Ref Level [dBm]	Result [dBm]	Limit [dBm]	Verdict
DH5	Ant1	2402	30~26500	4.14	-42.41	≤-15.86	PASS
		2441	30~26500	3.49	-42.97	≤-16.51	PASS
		2480	30~26500	3.38	-42.52	≤-16.62	PASS
2DH5	Ant1	2402	30~26500	0.58	-42.2	≤-19.42	PASS
		2441	30~26500	-0.26	-42.26	≤-20.26	PASS
		2480	30~26500	-0.41	-41.91	≤-20.41	PASS
3DH5	Ant1	2402	30~26500	0.71	-42.22	≤-19.29	PASS
		2441	30~26500	-0.05	-42.32	≤-20.05	PASS
		2480	30~26500	-0.19	-42.59	≤-20.19	PASS

Test Graphs

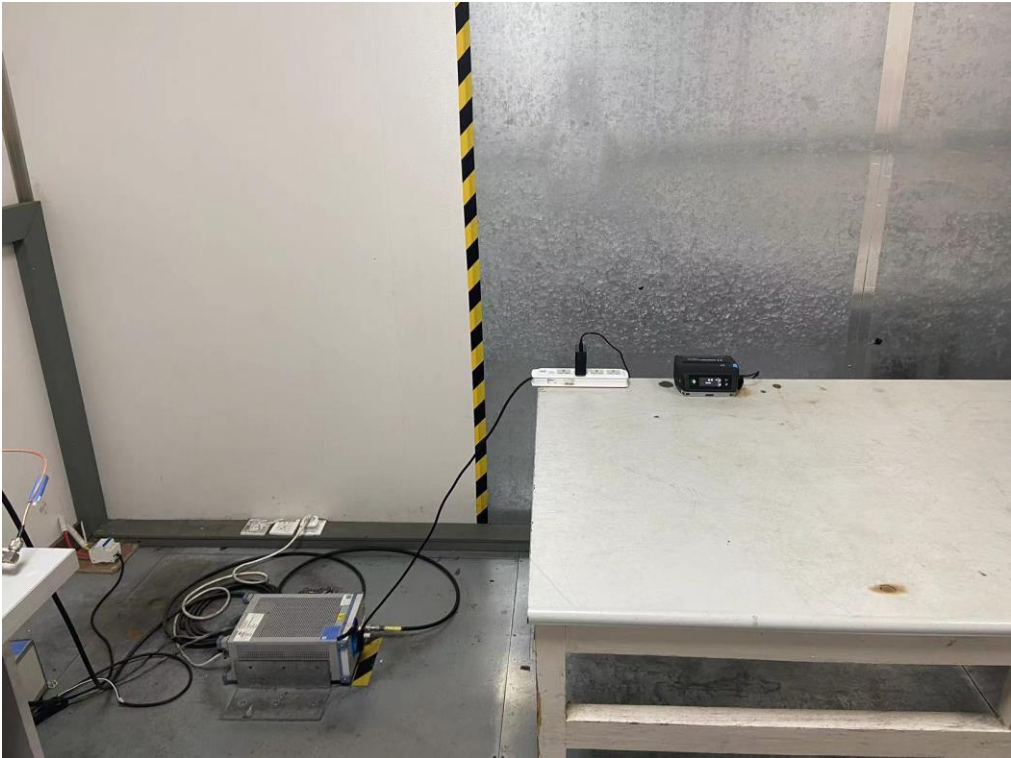




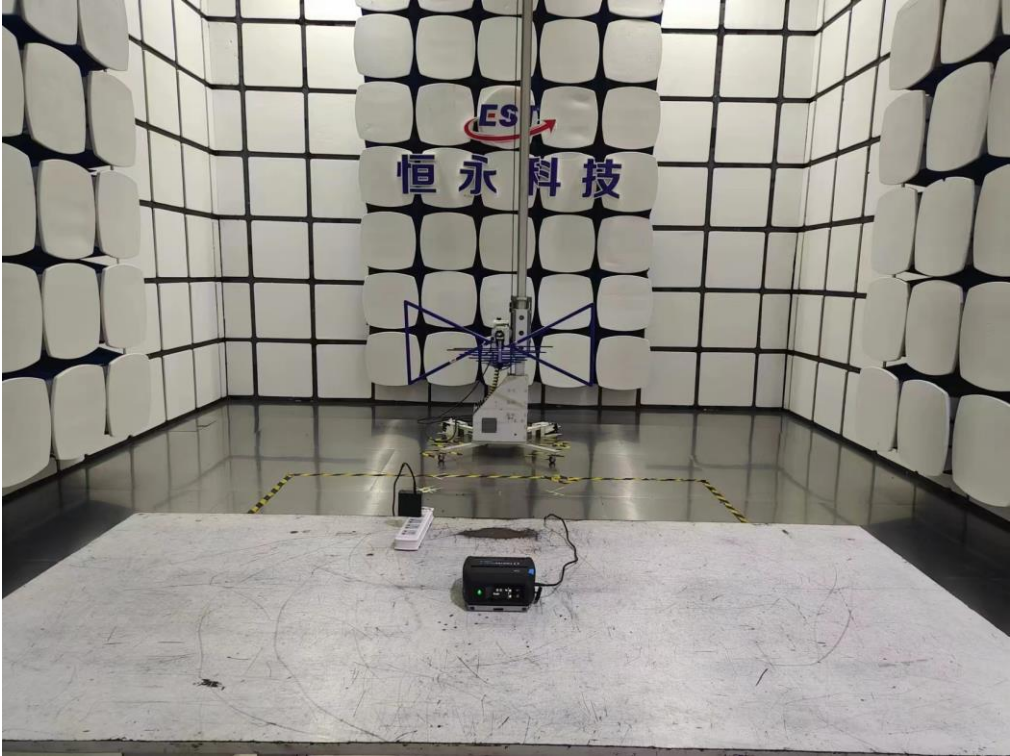


14. TEST SETUP PHOTO

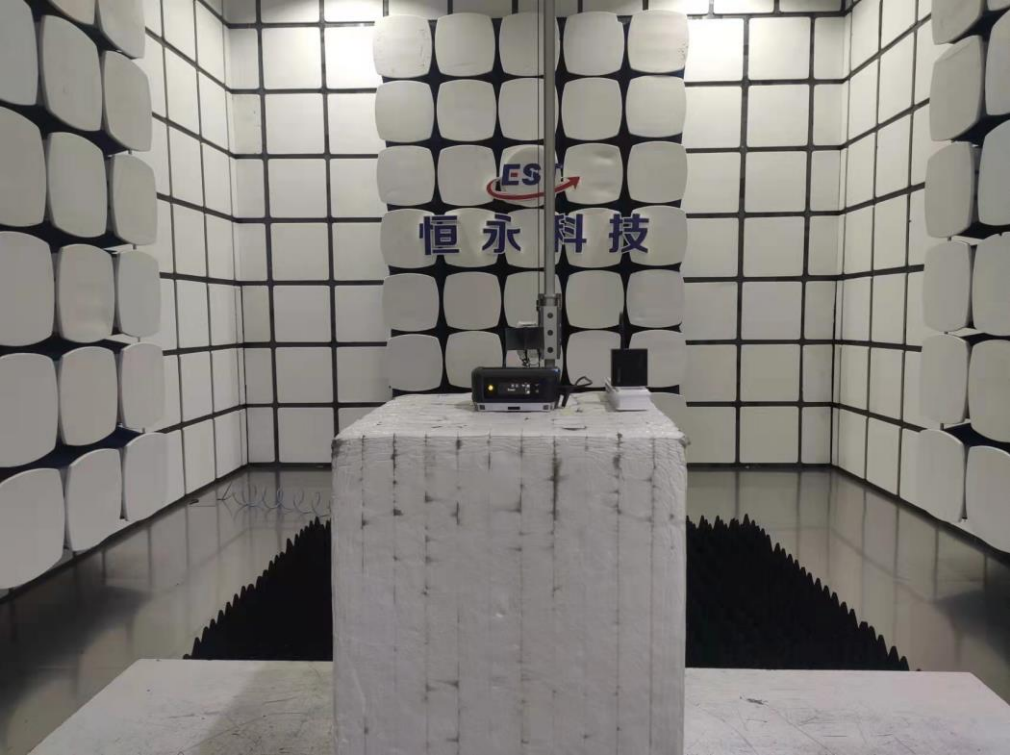
Conducted Test



Radiated Test (Below 1GHz)



Radiated Test (Above 1GHz)



15. EUT PHOTO

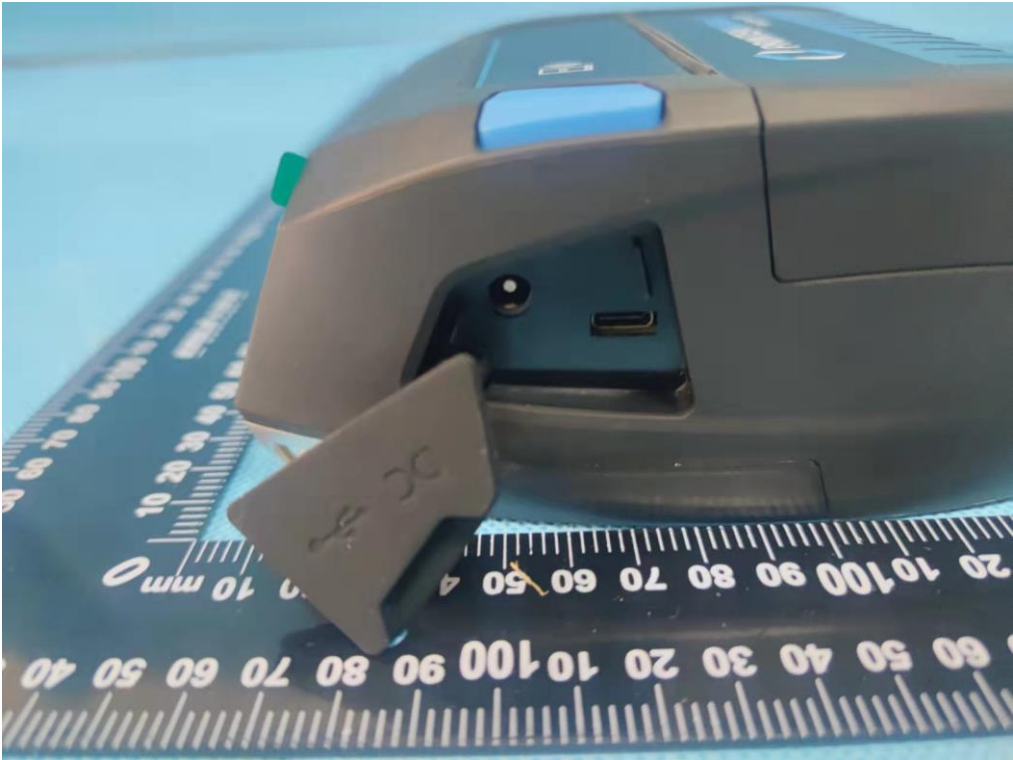
External Photos
M/N: FP641



External Photos
M/N: FP641



External Photos
M/N: FP641



External Photos
M/N: FP641



External Photos

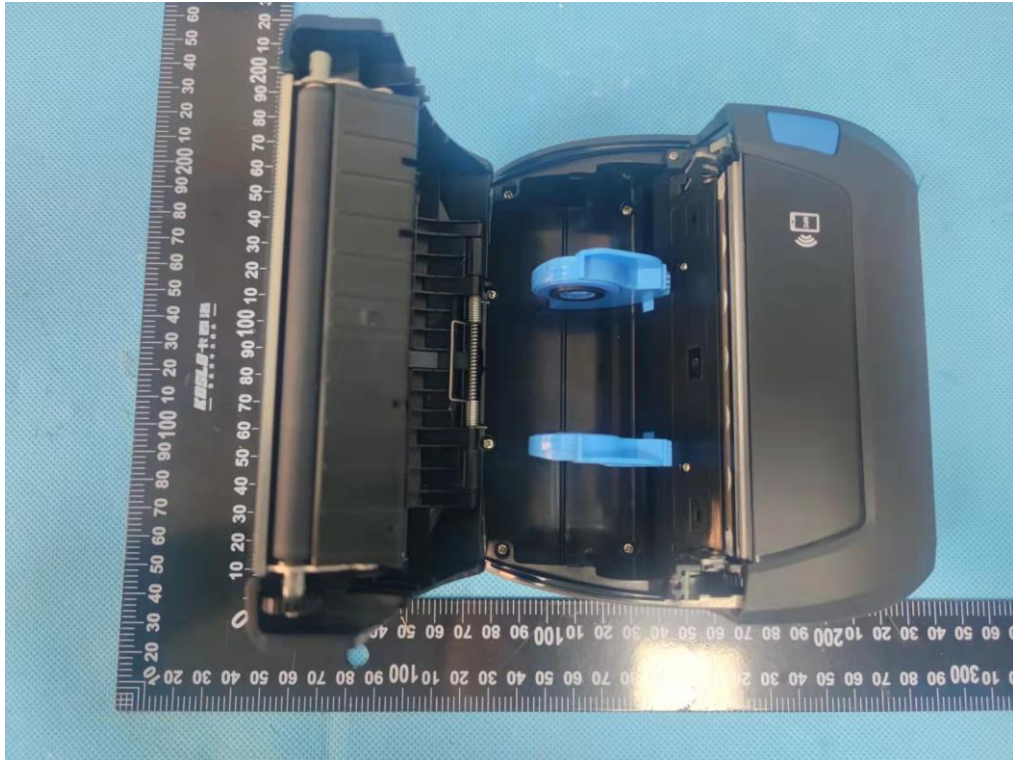
M/N: FP641



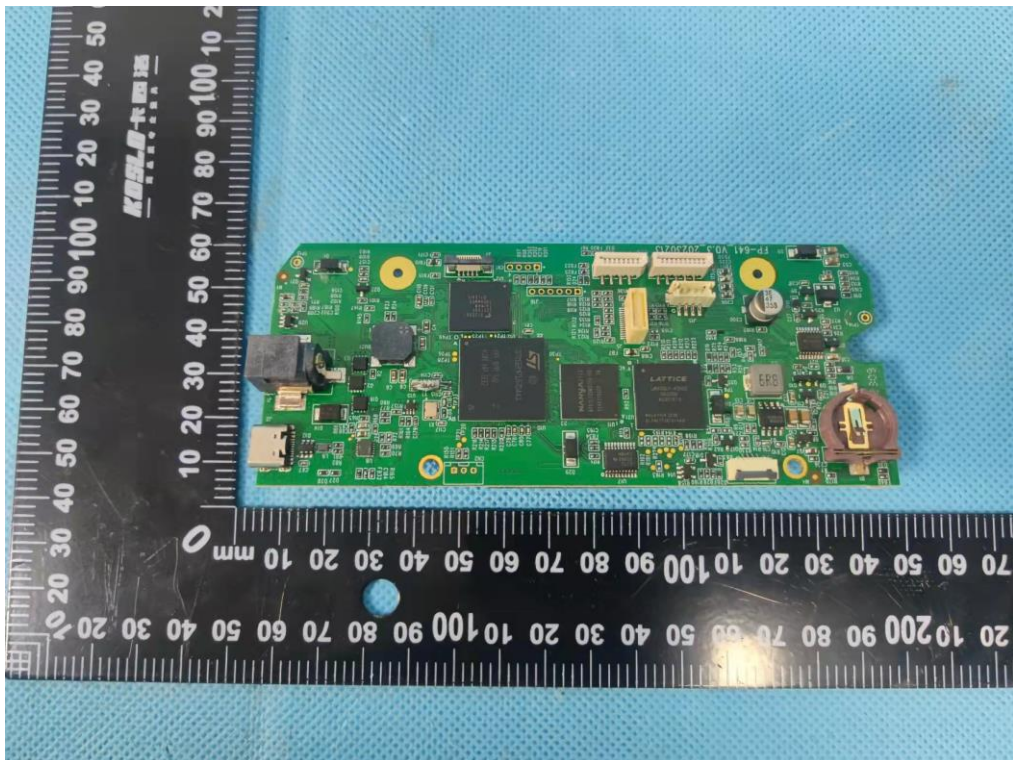
External Photos
M/N: FP641



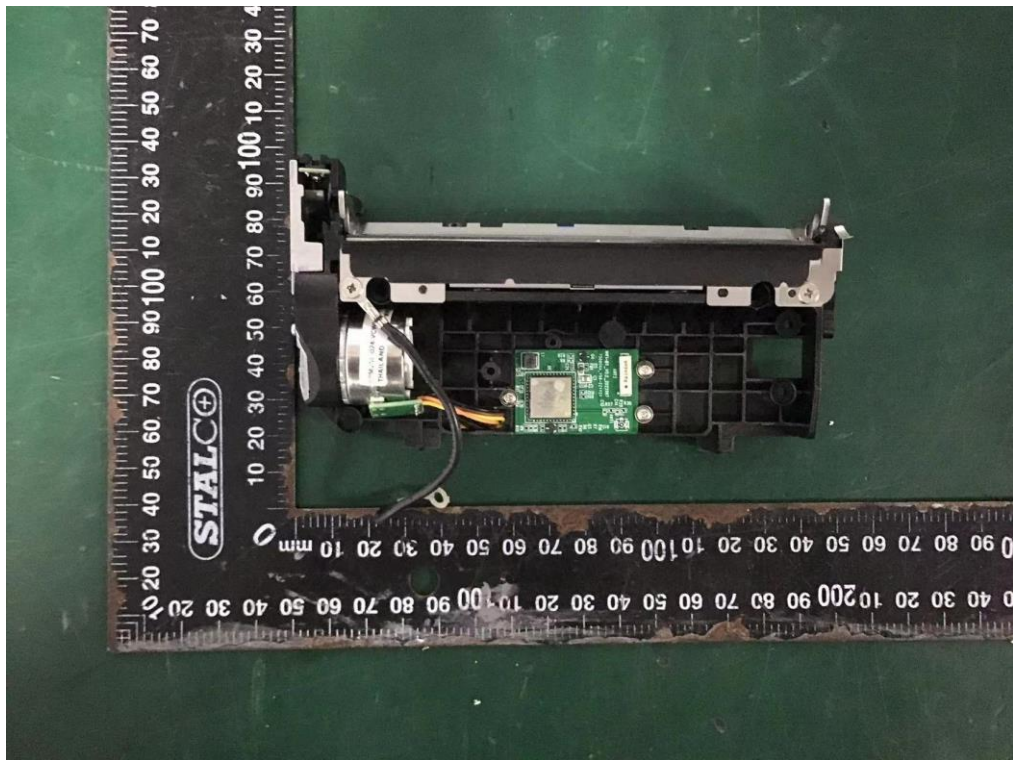
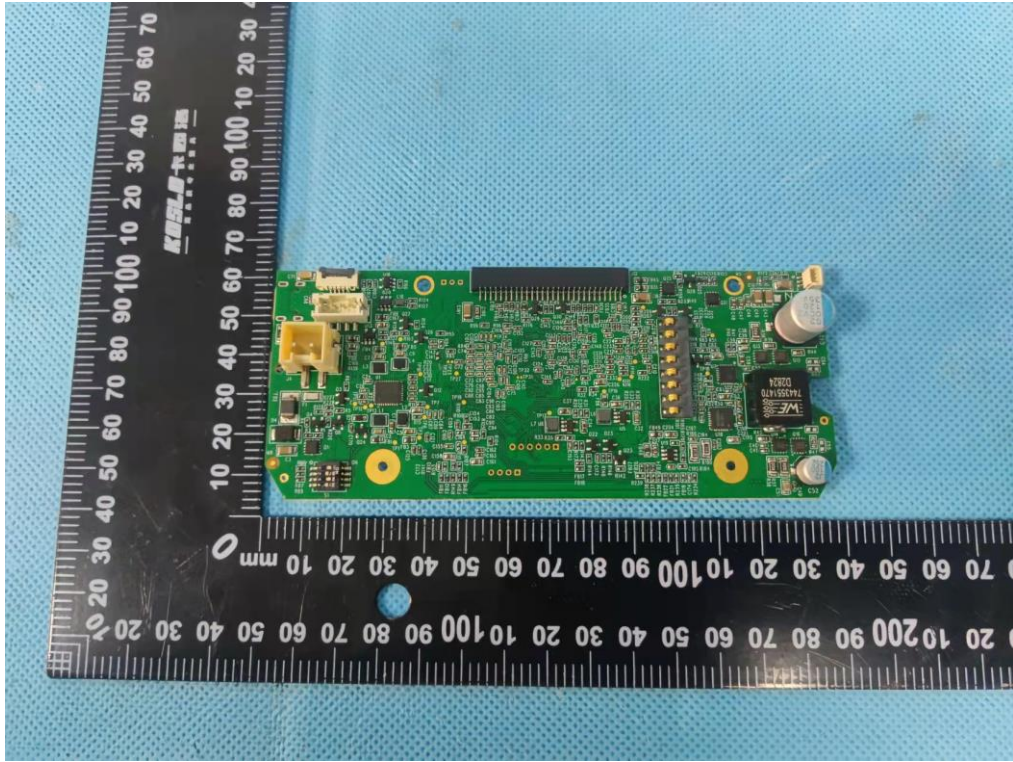
Internal Photos
M/N: FP641



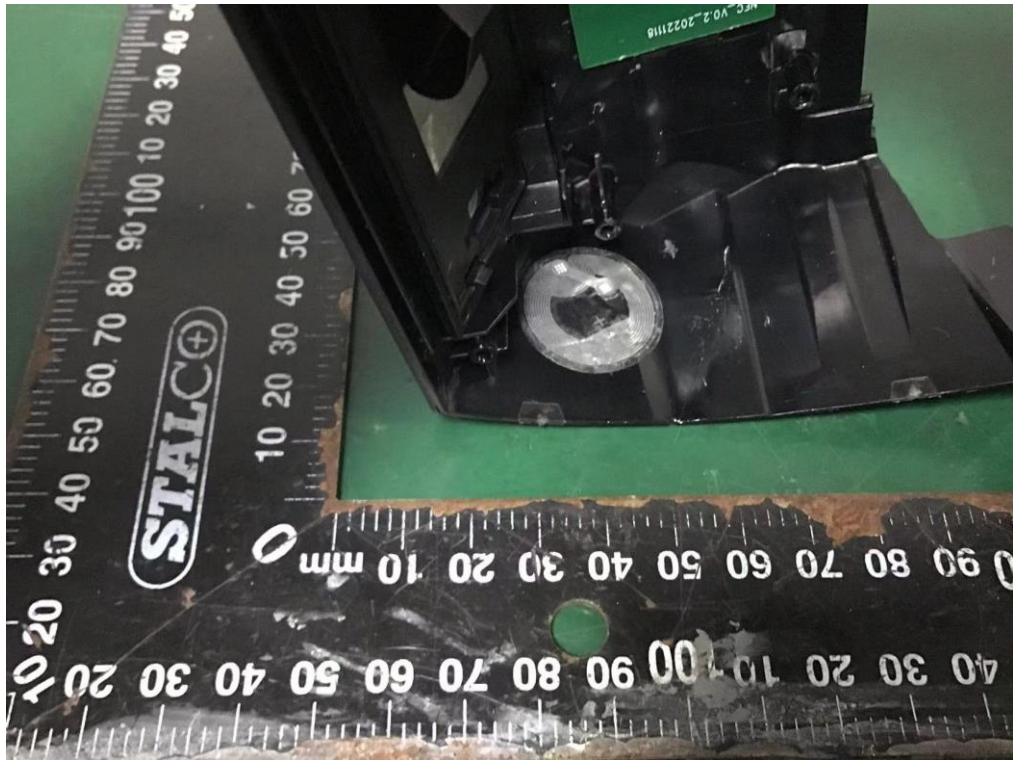
Internal Photos
M/N: FP641



Internal Photos
M/N: FP641



Internal Photos
M/N: FP641



Internal Photos
M/N: FP641

