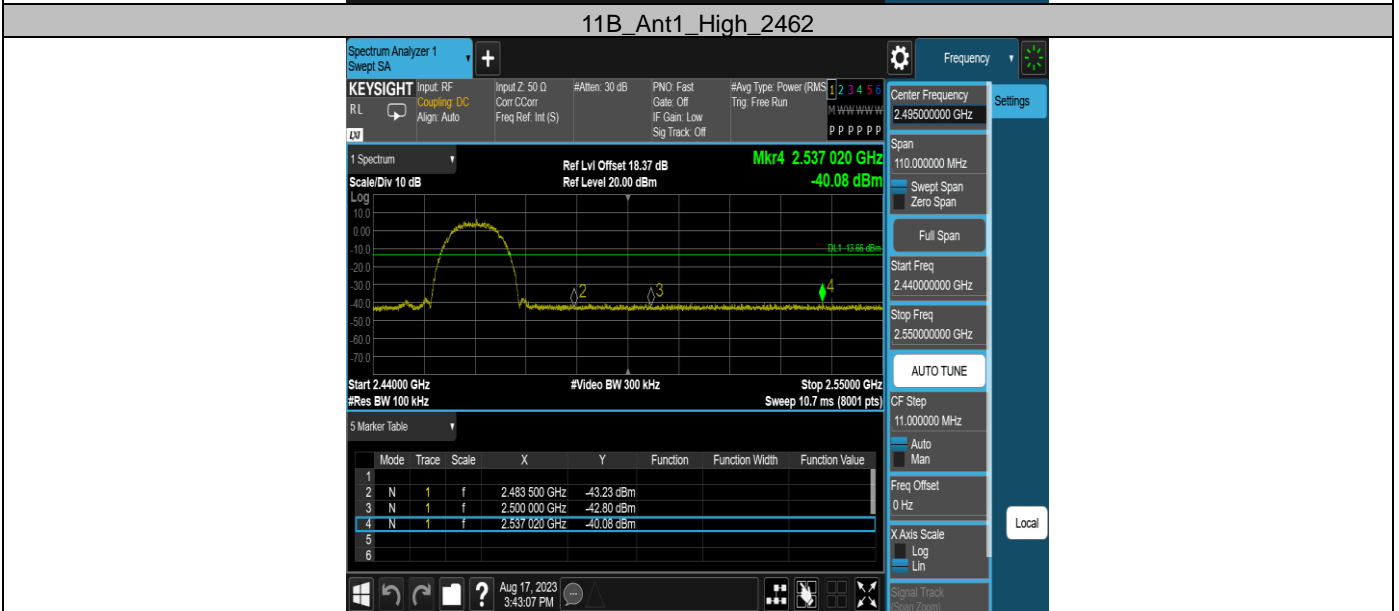
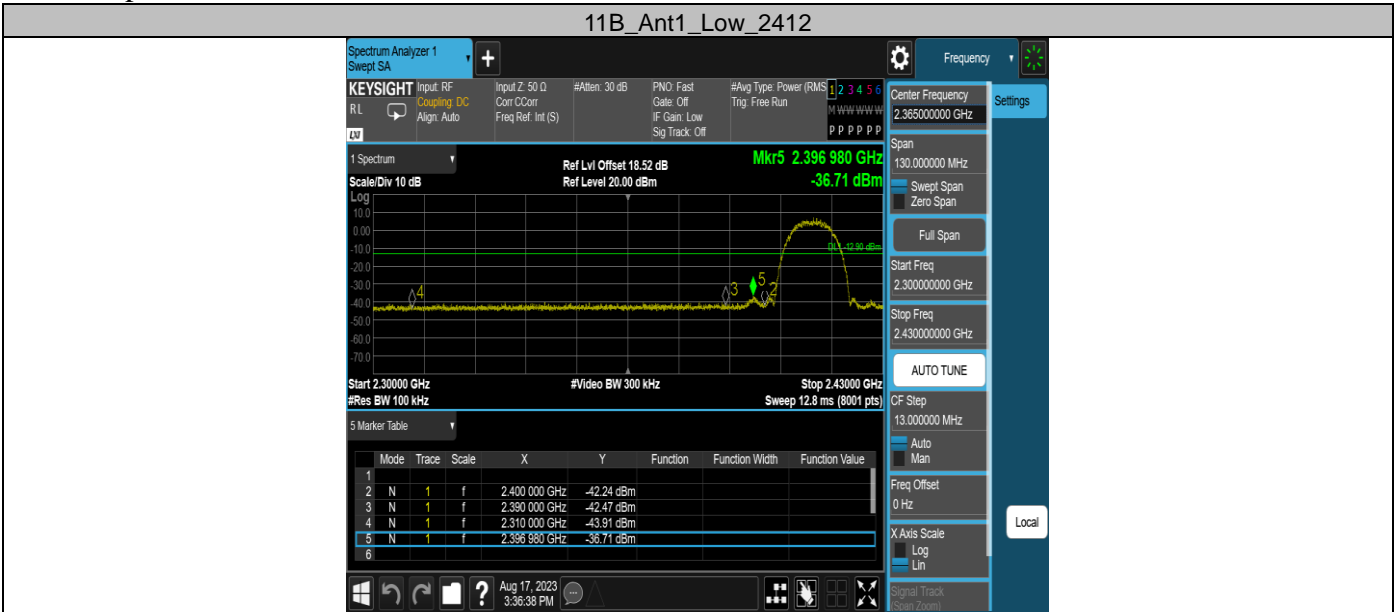


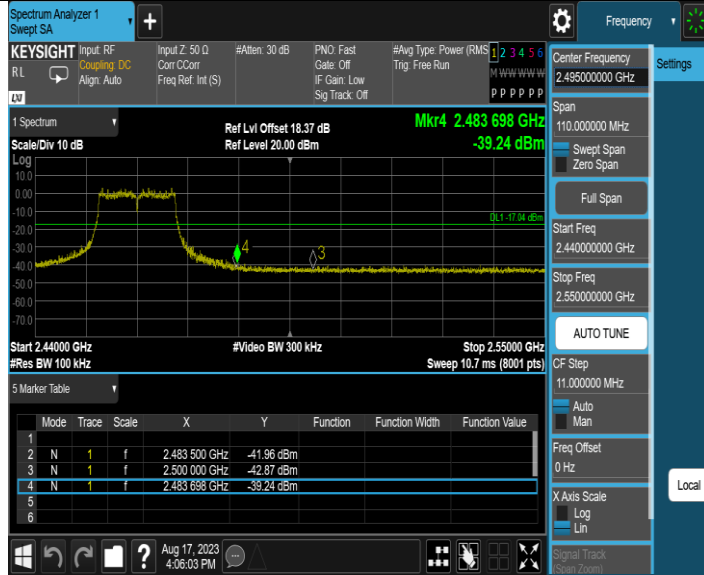
Appendix F: Band edge measurements
 Test Result

Test Mode	Antenna	Ch Name	Frequency [MHz]	Ref Level [dBm]	Result [dBm]	Limit [dBm]	Verdict
11B	Ant1	Low	2412	7.10	-36.71	≤-12.9	PASS
		High	2462	6.34	-40.08	≤-13.66	PASS
11G	Ant1	Low	2412	3.77	-27.73	≤-16.23	PASS
		High	2462	2.96	-39.24	≤-17.04	PASS
11N20SISO	Ant1	Low	2412	3.73	-28.88	≤-16.27	PASS
		High	2462	2.95	-39.78	≤-17.05	PASS
11N40SISO	Ant1	Low	2422	0.90	-33.18	≤-19.1	PASS
		High	2452	0.43	-39.18	≤-19.57	PASS

Test Graphs



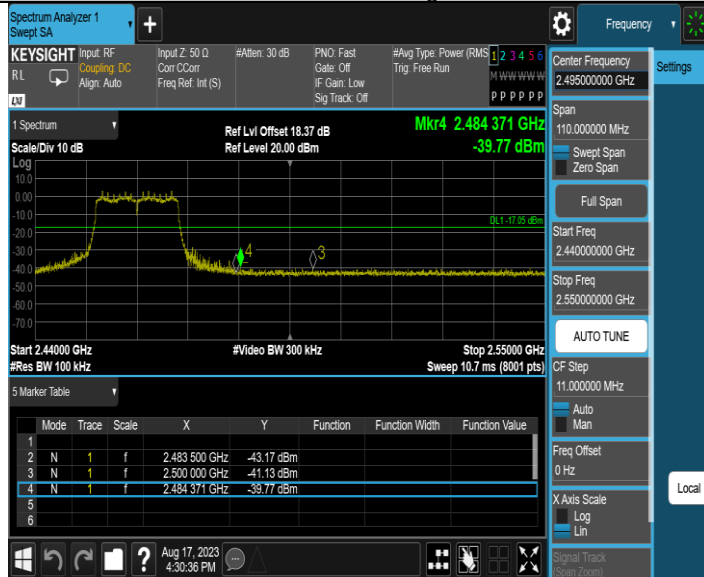
11G_Ant1_High_2462

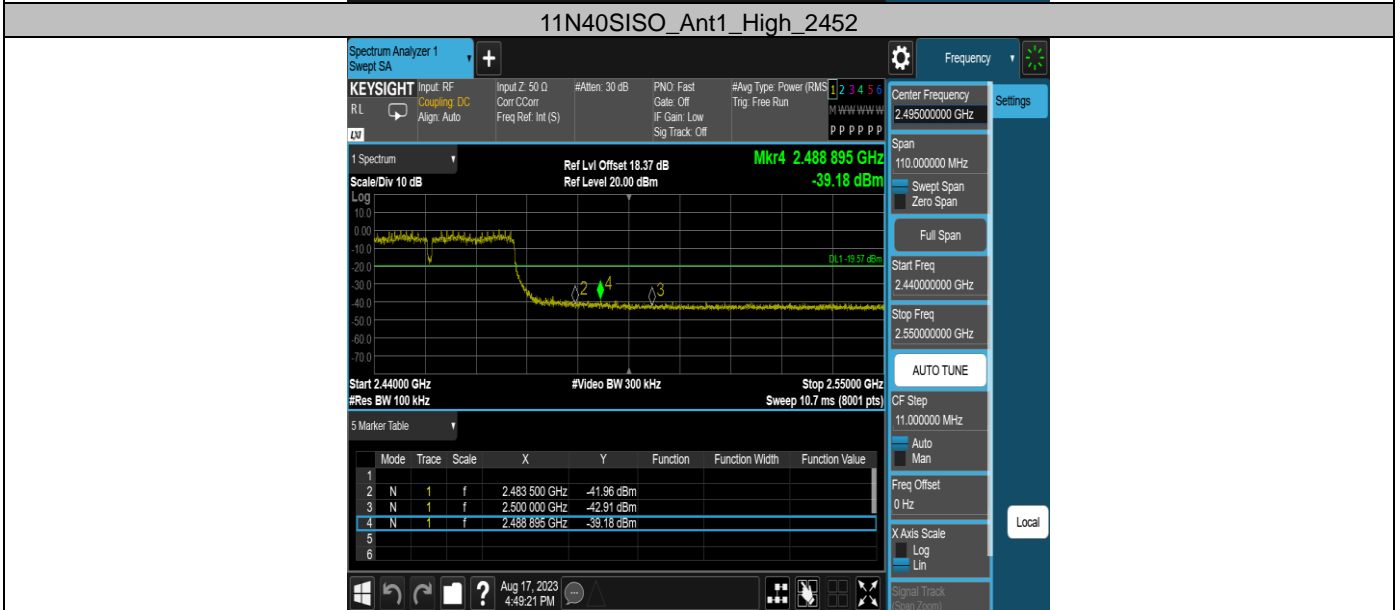


11N20SISO_Ant1_Low_2412



11N20SISO_Ant1_High_2462

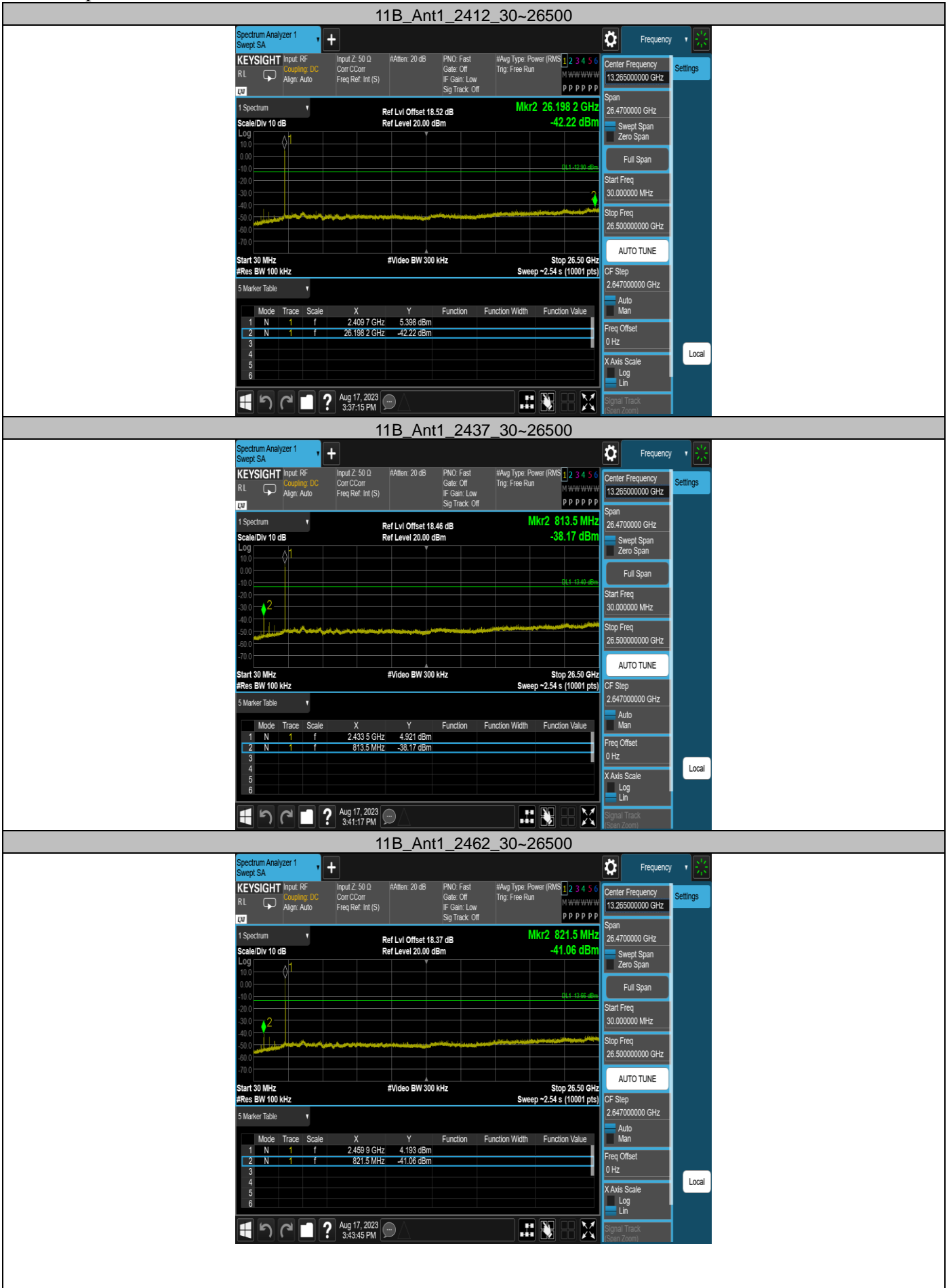




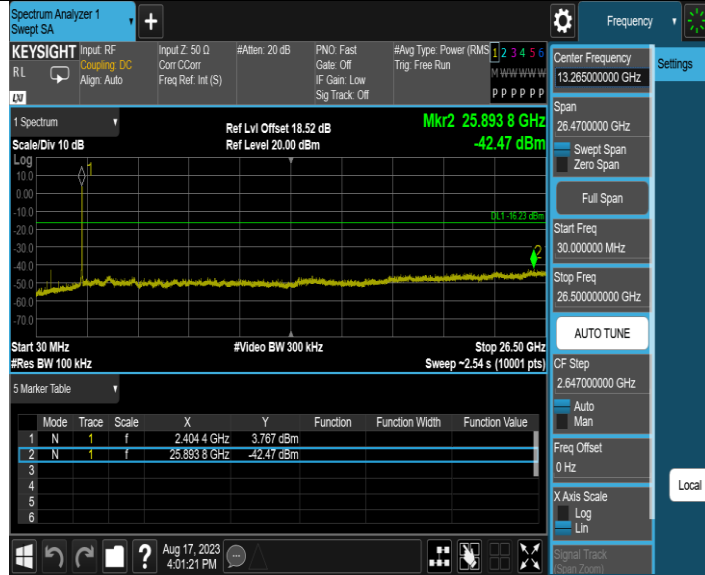
Appendix G: Conducted Spurious Emission Test Result

Test Mode	Antenna	Frequency [MHz]	Freq Range [MHz]	Ref Level [dBm]	Result [dBm]	Limit [dBm]	Verdict
11B	Ant1	2412	30~26500	7.10	-42.22	≤-12.9	PASS
		2437	30~26500	6.60	-38.17	≤-13.4	PASS
		2462	30~26500	6.34	-41.06	≤-13.66	PASS
11G	Ant1	2412	30~26500	3.77	-42.47	≤-16.23	PASS
		2437	30~26500	3.31	-41.77	≤-16.69	PASS
		2462	30~26500	2.96	-41.95	≤-17.04	PASS
11N20SISO	Ant1	2412	30~26500	3.73	-42.47	≤-16.27	PASS
		2437	30~26500	3.37	-39.78	≤-16.63	PASS
		2462	30~26500	2.95	-41.57	≤-17.05	PASS
11N40SISO	Ant1	2422	30~26500	0.90	-42.45	≤-19.1	PASS
		2437	30~26500	0.71	-41.98	≤-19.29	PASS
		2452	30~26500	0.43	-42.37	≤-19.57	PASS

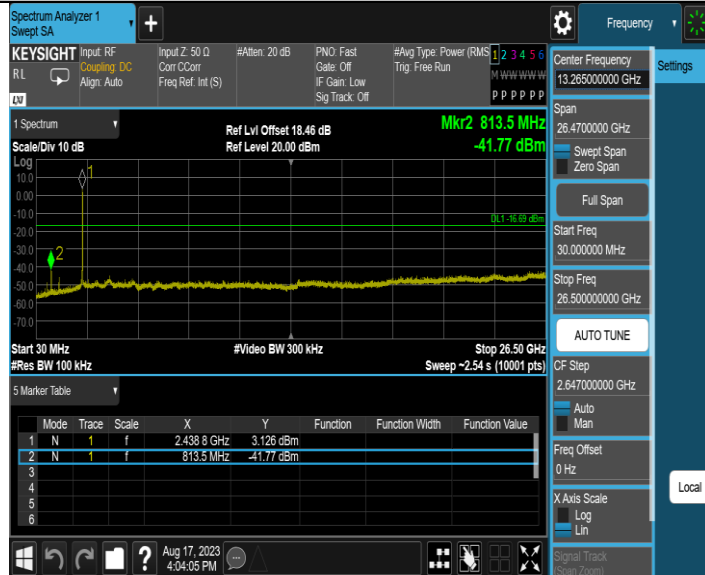
Test Graphs



11G_Ant1_2412_30~26500

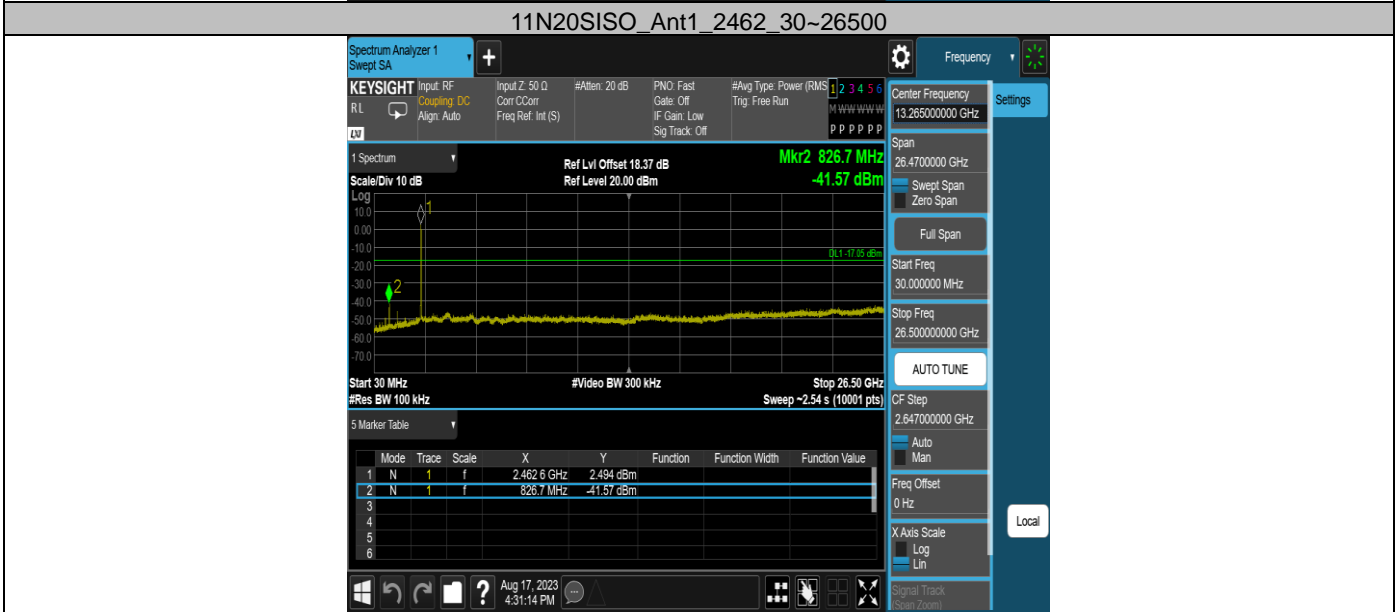
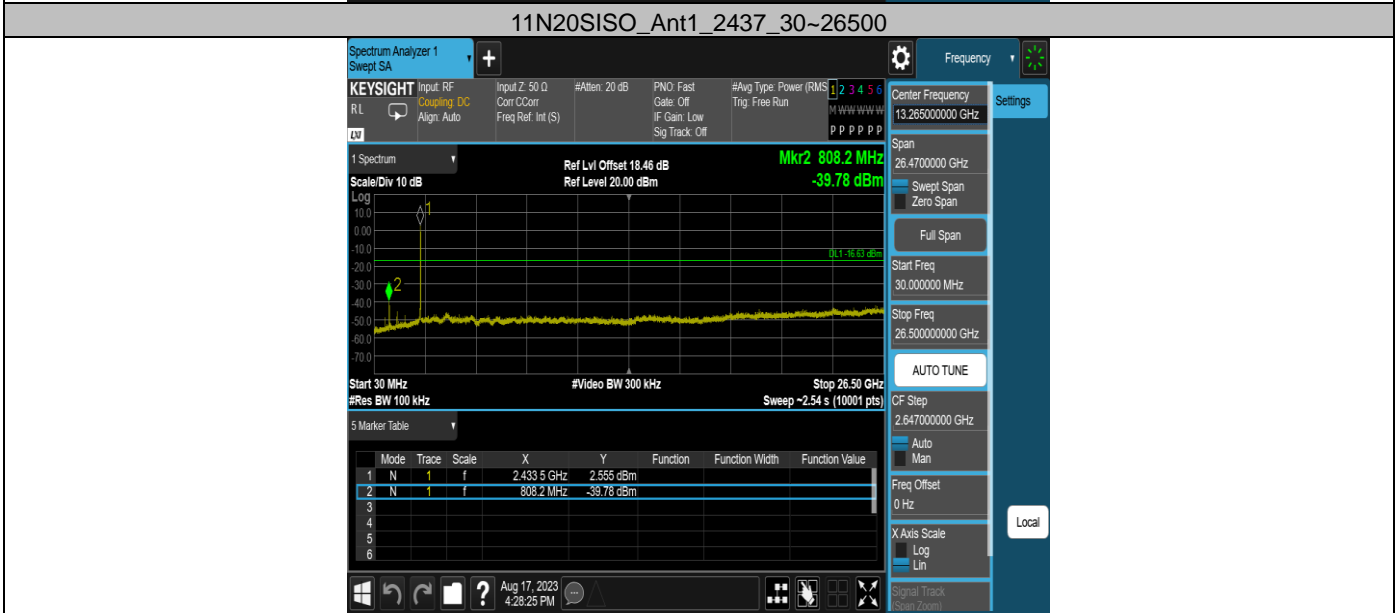
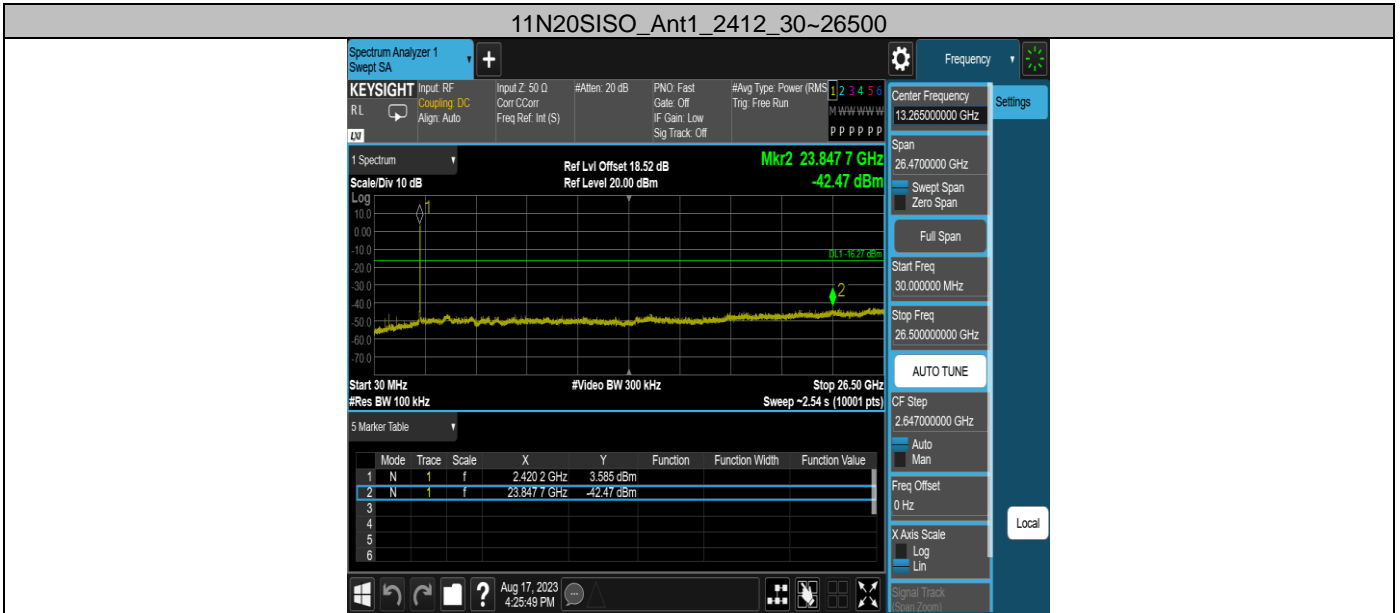


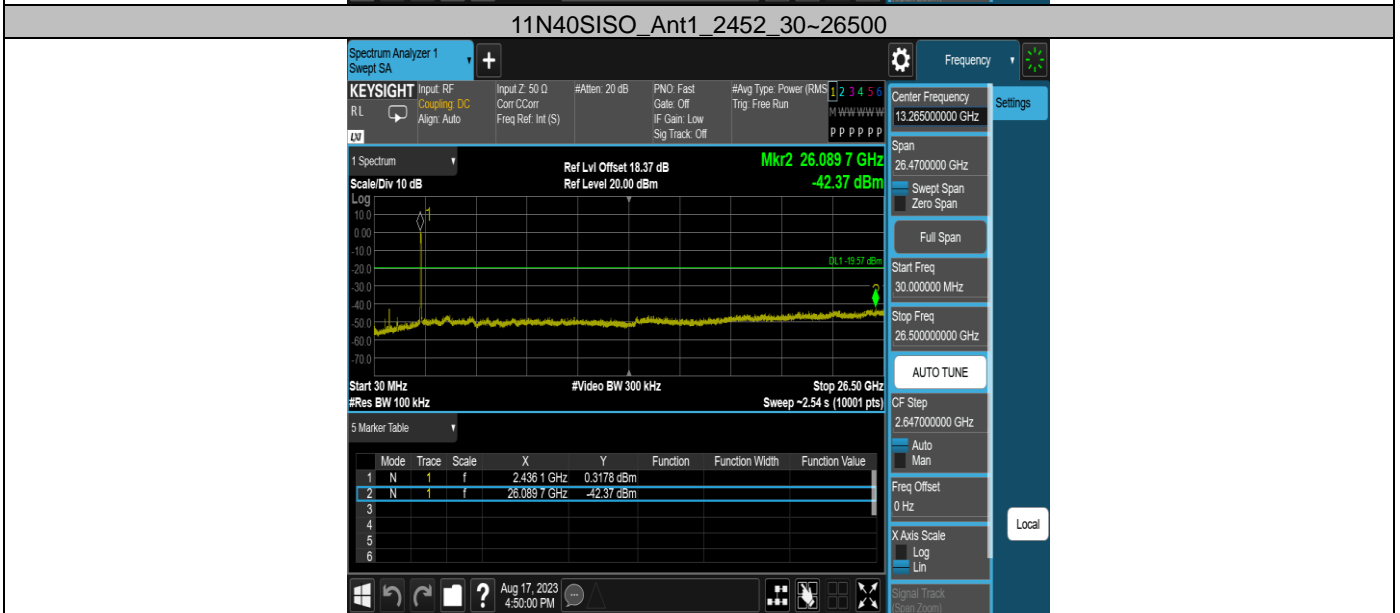
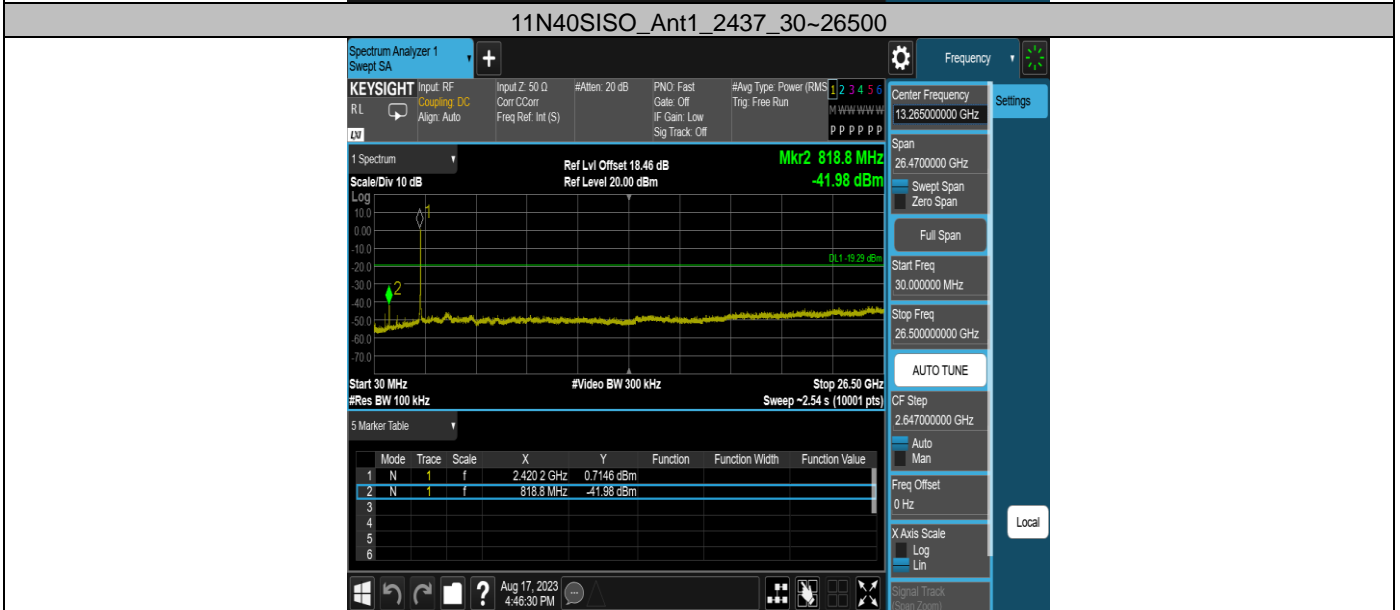
11G_Ant1_2437_30~26500



11G_Ant1_2462_30~26500





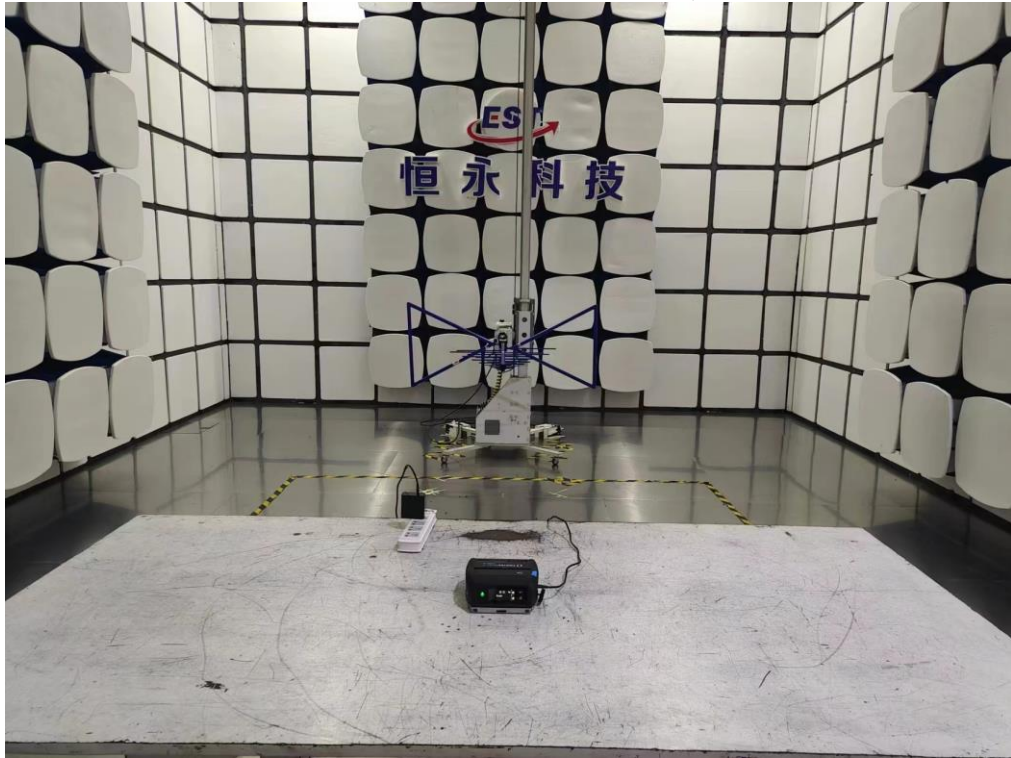


12. TEST SETUP PHOTO

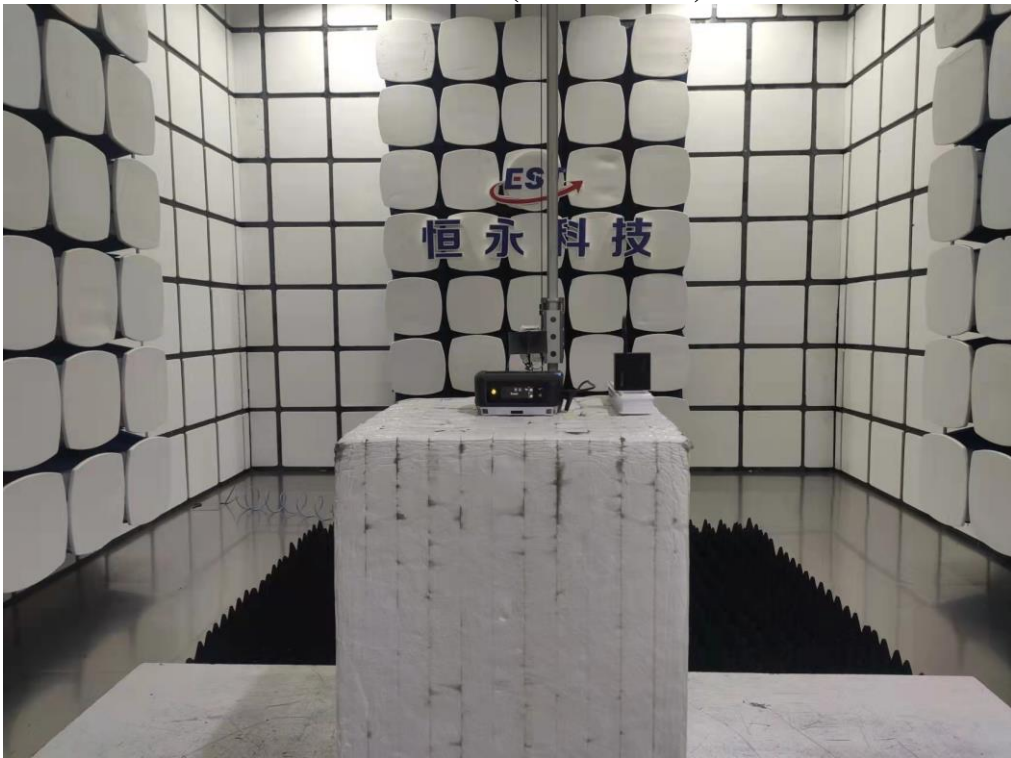
Conducted Test



Radiated Test (Below 1GHz)



Radiated Test (Above 1GHz)



13. EUT PHOTO

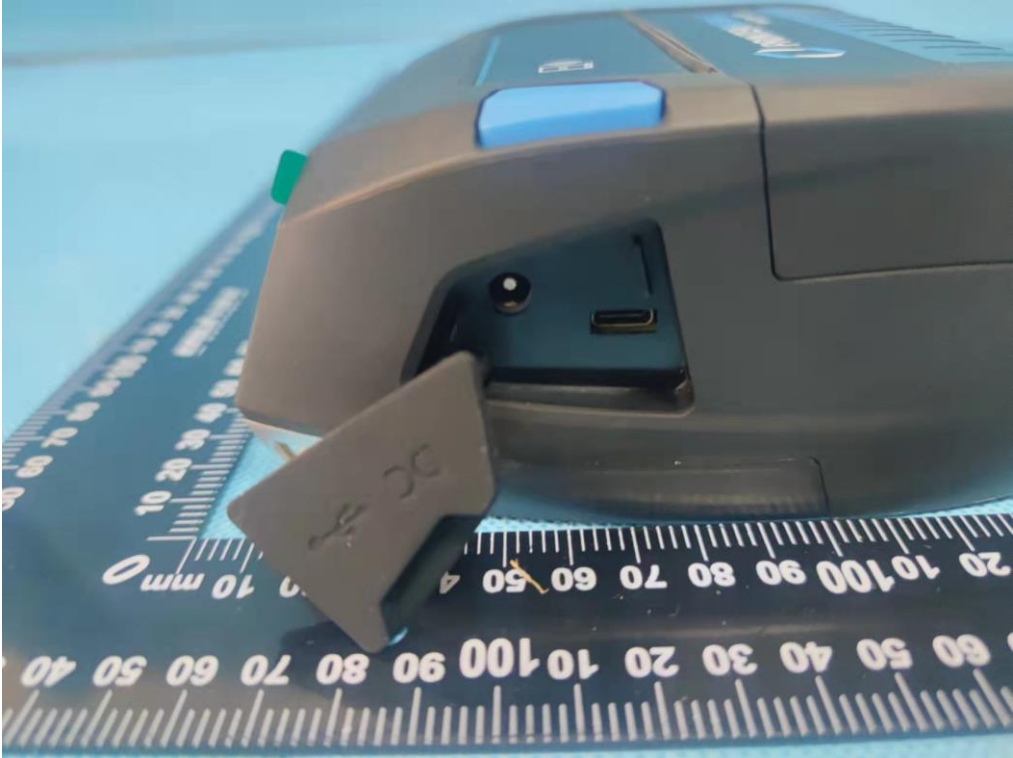
External Photos
M/N: FP641



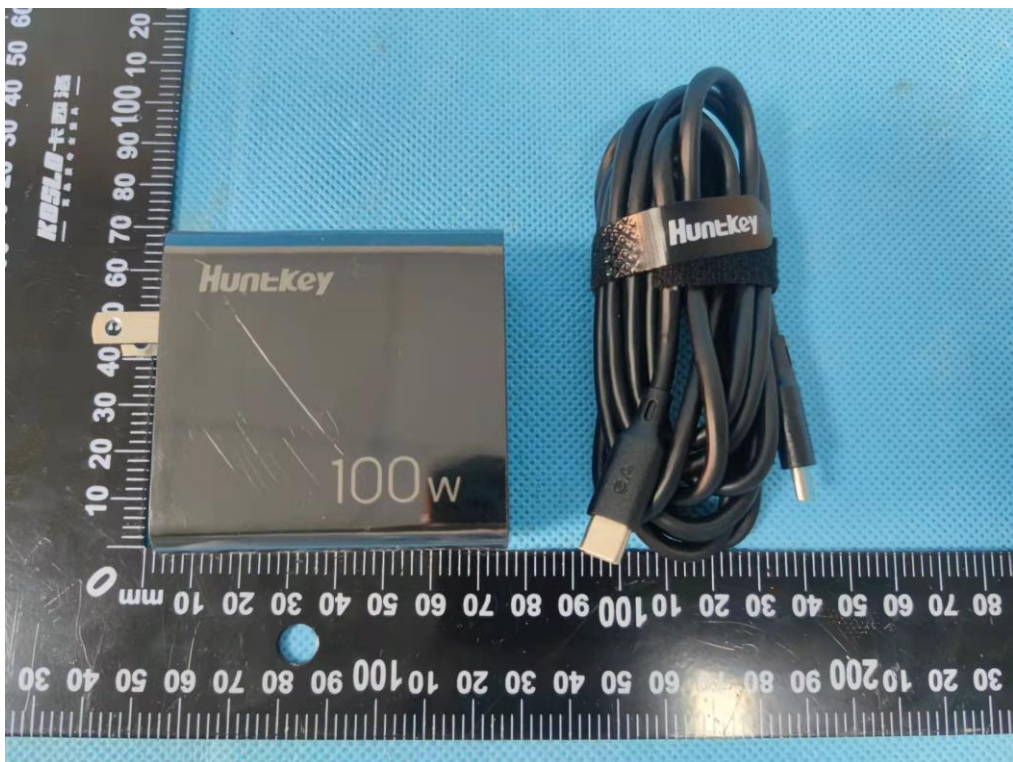
External Photos
M/N: FP641



External Photos
M/N: FP641



External Photos
M/N: FP641



External Photos

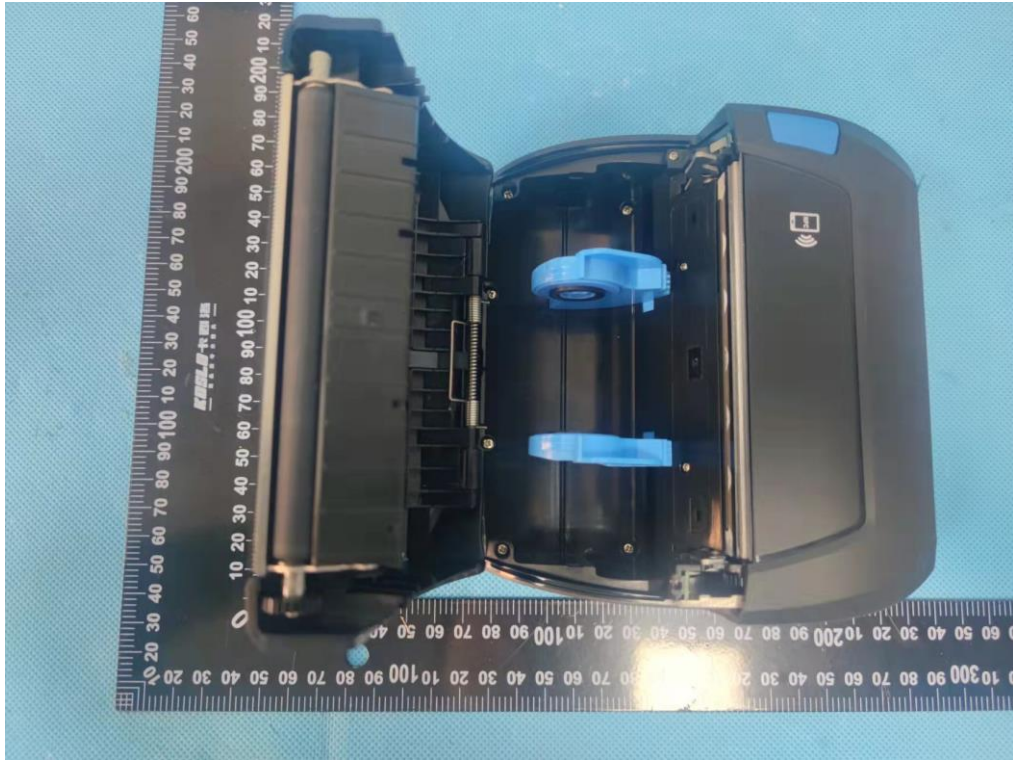
M/N: FP641



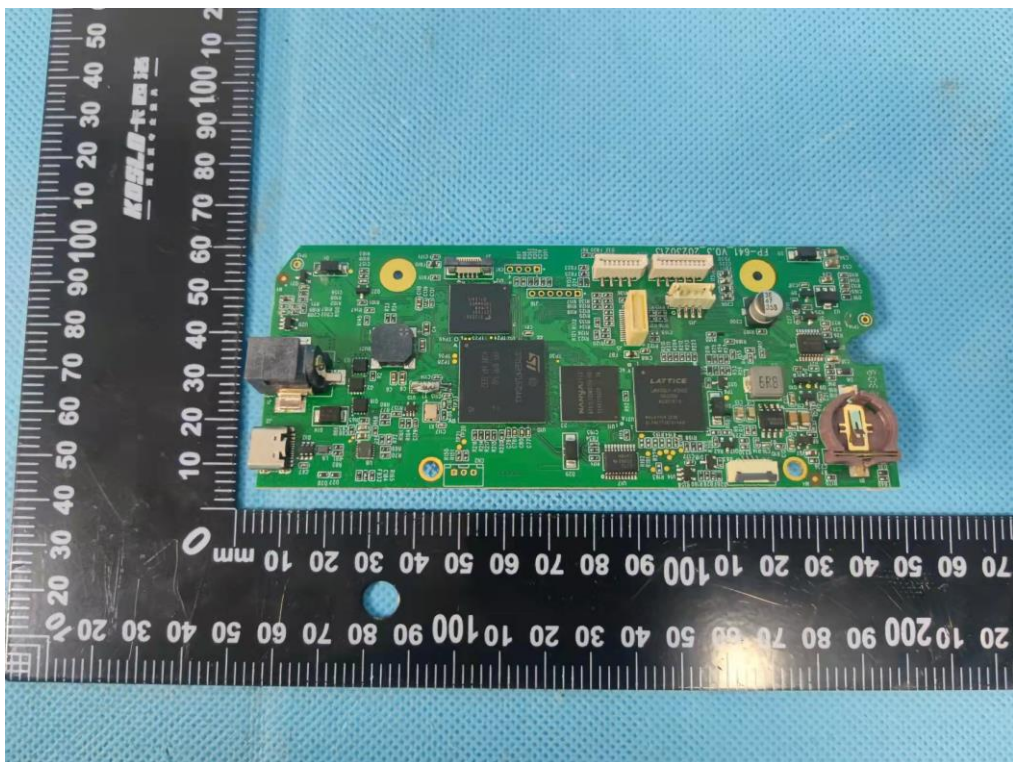
External Photos
M/N: FP641



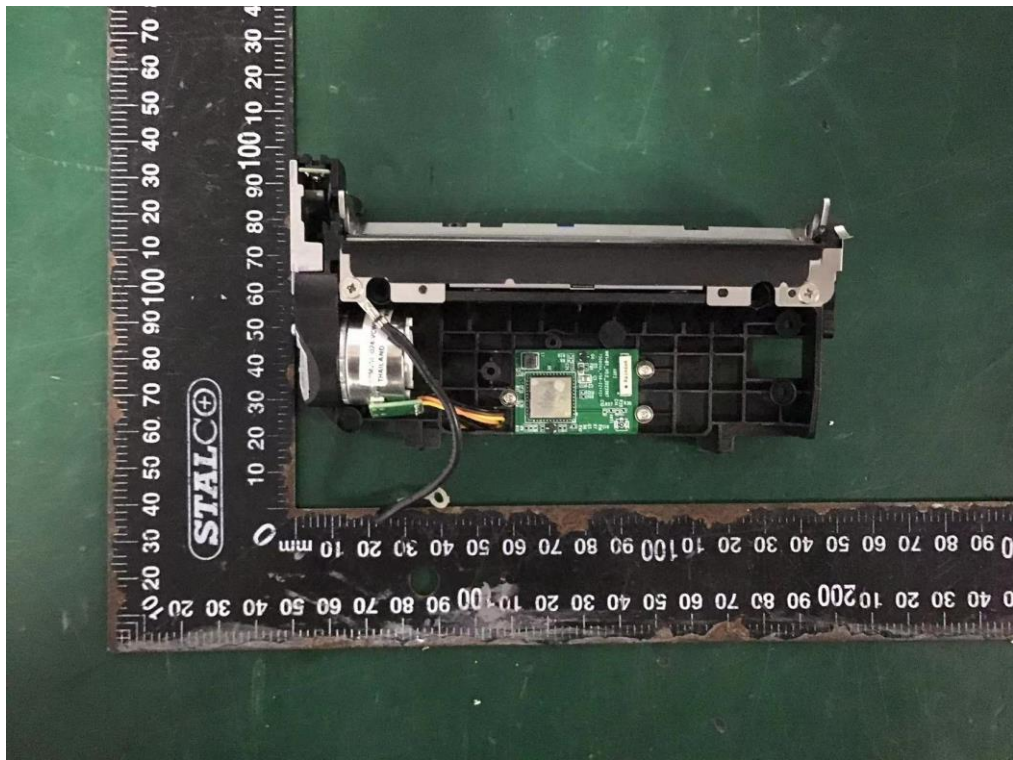
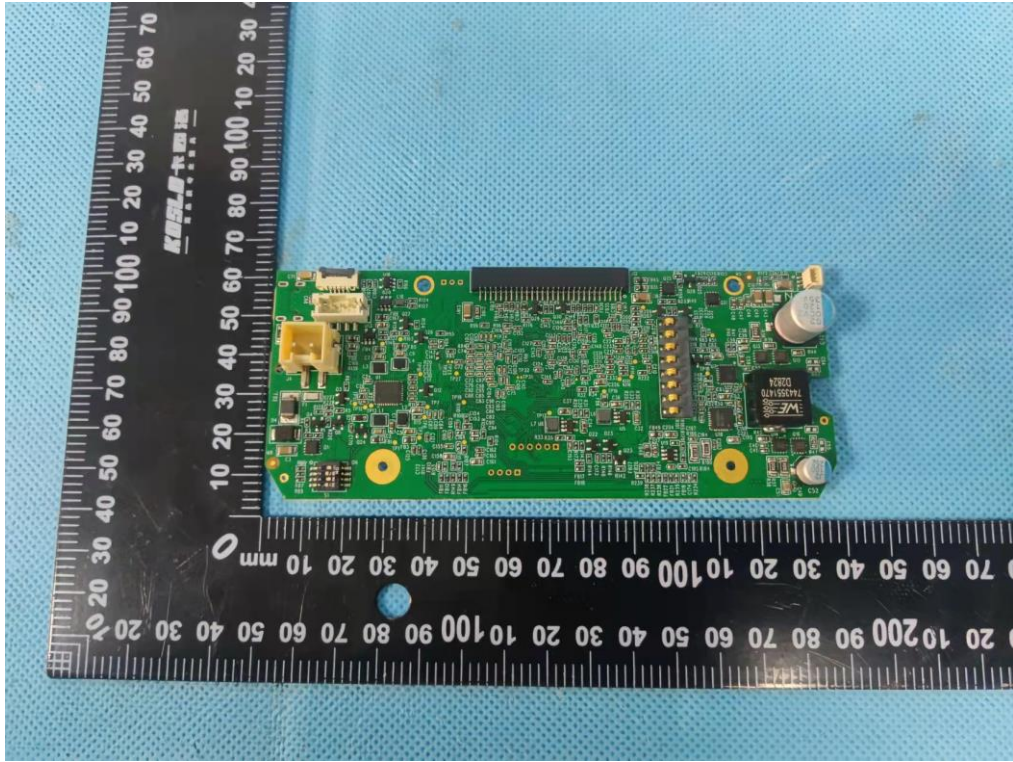
Internal Photos
M/N: FP641



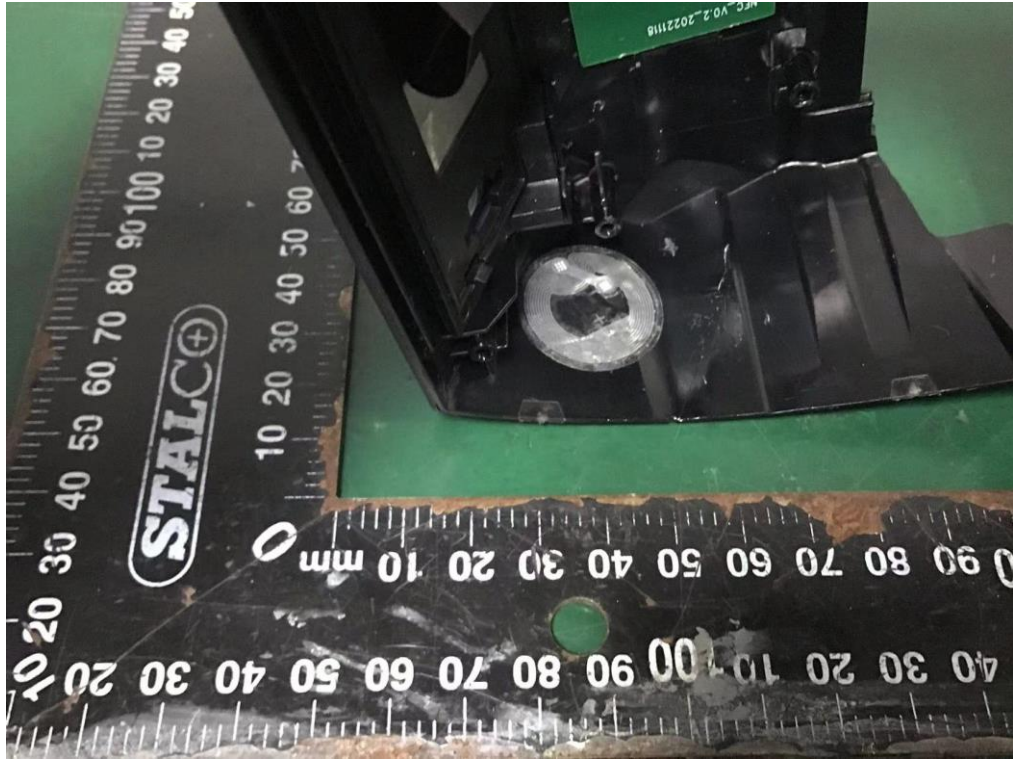
Internal Photos
M/N: FP641



Internal Photos
M/N: FP641



Internal Photos
M/N: FP641



Internal Photos
M/N: FP641



Internal Photos
M/N: FP641



End of Test Report