



DP-230L Thermal Printer



This device fulfills the European standards requirements by complying with the Directive relating to electromagnetic compatibility and relating to low-voltage electrical equipment. Furthermore it fulfills the requirements for RoHS and R&TTE if applicable.

Conformity with the above mentioned Directives is indicated by the CE symbol attached to the device.

Note: Conformity may be affected by:

- using interface cables not complying with the specifications
- non-observance of important instructions in the operator's manual
- installing components not approved for this device by the manufacturer
- unauthorized manipulation



Dieses Gerät erfüllt die Anforderungen der Europäischen Normen durch Einhaltung der Richtlinien bezüglich der Elektromagnetischen Verträglichkeit sowie bezüglich Elektrischer Betriebsmittel mit Niederspannung. Des Weiteren werden die Anforderungen bezüglich RoHS und falls anwendbar R&TTE erfüllt.

Die Konformität zu den oben angeführten Richtlinien ist durch das am Gerät angebrachte CE-Zeichen gekennzeichnet.

Hinweis: Die Konformität kann beeinflusst werden durch:

- Benutzung von nicht spezifizierten Schnittstellen
- Nichtbeachtung wichtiger Hinweise der Bedienungsanleitung
- Ersetzen von Bauteilen, die nicht vom Hersteller für dieses Gerät freigegeben wurden
- Eingriffe durch Unbefugte

FCC Part 15 Class B

1. This device complies with Part 15 of the FCC Rules. Operation is subject to the following two conditions:

1) This device may not cause harmful interference, and

2) This device must accept any interference received, including interference that may cause undesired operation.

2. Changes or modifications not expressly approved by the party responsible for compliance could void the user's authority to operate the equipment.

This equipment has been tested and found to comply with the limits for a Class B digital device, pursuant to Part 15 of the FCC Rules. These limits are designed to provide reasonable protection against harmful interference in a residential installation.

This equipment generates uses and can radiate radio frequency energy and, if not installed and used in accordance with the instructions, may cause harmful interference to radio communications. However, there is no guarantee that interference will not occur in a particular installation. If this

equipment does cause harmful interference to radio or television reception, which can be determined by turning the equipment off and on, the user is encouraged to try to correct the interference by one or more of the following measures:

Re-orientate or relocate the receiving antenna.

Increase the separation between the equipment and receiver.

Connect the equipment into an outlet on a circuit different from that to which the receiver is connected.

Consult the dealer or an experienced radio/TV technician for help.

RF warning statement:

The device has been evaluated to meet general RF exposure requirement. The device can be used in portable exposure condition without restriction.

## Canadian Department of Communications Radio Interference Statement

This device complies with Industry Canada license-exempt RSS standard(s). Operation is subject to the following two conditions: 1) this device may not cause interference; 2) this device must accept any interference, including interference that may cause undesired operation of the device. Under Industry Canada regulations, this radio transmitter may only operate using an antenna of a type and maximum (or lesser) gain approved for the transmitter by Industry Canada. To reduce potential radio interference to other users, the antenna type and its gain should be so chosen that the equivalent isotropically radiated power (e.i.r.p.) is not more than that necessary for successful communication. Maximum power output plus maximum antenna gain of the EUT is:  $4.5\text{W/m}^2$ , Limit is  $10\text{Wm}^2$ .

*Le présent appareil est conforme aux CNR d'Industrie Canada applicables aux appareils radio exempts de*

*licence. L'exploitation est autorisée aux deux conditions suivantes : (1) l'appareil ne doit pas produire de brouillage, et (2) l'utilisateur de l'appareil doit accepter tout brouillage radioélectrique subi, même si le brouillage est susceptible d'en compromettre le fonctionnement. Conformément à la réglementation d'Industrie Canada, le présent émetteur radio peut fonctionner avec une antenne d'un type et d'un gain maximal (ou inférieur) approuvé pour l'émetteur par Industrie Canada.*

*Dans le but de réduire les risques de brouillage radioélectrique à l'intention des autres utilisateurs, il faut choisir le type d'antenne et son gain de sorte que la puissance isotrope rayonnée équivalente (p.i.r.e.) ne dépasse pas l'intensité nécessaire à l'établissement d'une communication satisfaisante. La puissance de sortie maximale plus gain d'antenne maximal du EUT est :  $4.5W/m^2$  Limite est  $10W/m^2$*

Battery Disposal

Only disposes of used batteries according instructions and/or your local regulations.



Acknowledgments:

DASCOM is a registered trademark of DASCOM Europe GmbH

Bluetooth is a registered trademark of Bluetooth SIG, Inc.

Zebra, CPCL and ZPL are registered trademarks of Zebra Technologies

Wi-Fi is a registered trademark of the Wi-Fi Alliance

Windows is a registered trademark of Microsoft Corporation

All other trademarks are the property of their respective owners.

© 2015 by DASCOM Europe GmbH, Ulm, Germany. All rights reserved.





Read all set up and operating instructions before proceeding with operation. Do not operate in an enclosure unless properly ventilated. Do not operate near a heat source.



Lesen Sie vor der Inbetriebnahme die Aufbau- und Bedienungsanleitung. Betreiben Sie den Drucker nicht in einem kleinen, geschlossenen Raum, es sei denn dieser wird ordnungsgemäß belüftet. Nehmen Sie den Drucker nicht in der Nähe einer Wärmequelle in Betrieb.



No user-serviceable parts inside. Refer service or repairs to a qualified service professional. Use of genuine DASCUM replacement parts is required to warrant proper, safe operation. Any alteration or modification of this device voids the user warranty and may make the product unsafe to operate. The print head and motors get hot during use. Wait until they cool before touching them. Make certain the printer is disconnected from AC power before

removing any covers or performing any required cleaning or maintenance. Connecting this printer to an ungrounded receptacle can result in electrical shock. Never place the printer near inflammable or explosive substances. Do not operate near liquid or spill liquid into the printer at any time.



Enthält keine Teile, die vom Bediener instandgesetzt werden können. Bitte wenden Sie sich bei Instandsetzung oder Reparatur an qualifiziertes Kundendienstpersonal. Die Verwendung von echten DASCUM Ersatzteilen ist notwendig, um ordnungsgemäßen, sicheren Betrieb zu gewährleisten. Änderungen oder Modifikationen dieses Geräts machen die Garantie ungültig und können den sicheren Betrieb des Produkts gefährden. Während des Druckens werden Druckerkopf und Motoren heiß. Warten Sie, bis sich die Teile abgekühlt haben, bevor Sie sie berühren. Vergewissern Sie sich, dass der Drucker nicht mehr an die Stromquelle angeschlossen ist, bevor Sie Abdeckungen abnehmen oder das Gerät reinigen bzw. warten. Schließen Sie diesen

Drucker nicht an eine ungeerdete Steckdose an; dies kann zum Elektroschock führen. Setzen Sie den Drucker niemals in die Nähe von feuer- oder explosionsgefährlichen Stoffen. Betreiben Sie den Drucker nicht in der Nähe von Flüssigkeiten und lassen Sie keine Flüssigkeiten in den Drucker gelangen.

**Specifications are subject to change without notice.**




Content	
I . Packaging list .....	1
II .Printer parts list .....	2
III.Preparation before using .....	3
3.1 Battery installation (disassembly) .....	3
3.2 Media .....	4
3.3 Charging the battery .....	6
IV.Quick Start Instructions .....	7
4.1 Power on .....	7
4.2 Power off.....	7
4.3 Paper feeding.....	8
4.4 Control panel.....	8
4.5 Hexadecimal.....	10
4.6 Self-test .....	11
4.7 Self-test page.....	12
V.Configuration .....	14
5.1 Install Config Tool .....	14
5.2 Configuration Setup .....	17
5.3 Reset Factory Settings.....	21

5.4 Software upgrade .....	22	7.2 Use and storage of printing paper	29
VI.Communication.....	25	VIII.Troubleshooting .....	30
6.1 USB.....	25	IX.Appendix.....	33
6.2 Wi-Fi.....	26	9.1 Parameters .....	33
VII.Maintenance .....	27	9.2DASCOM representative .....	36
7.1 Daily maintenance of printers .....	27		



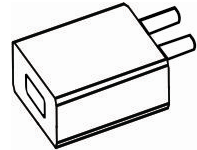
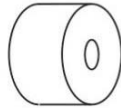

I . Packaging list

Standard accessories

		
Printer(1 pcs)	Battery(1 pcs)	Type-C power cord(1pcs)



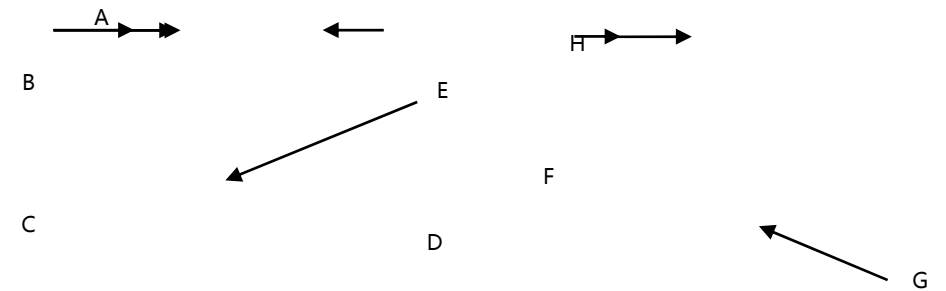


		
Power adapter(1pcs)	Test paper roll ( 1 pcs )	User guide ( 1pcs )

## II .Printer parts list

Front view

Rear view



A	paper door	E	display screen
B	open button	F	battery clip
C	control panel	G	battery
D	charging port/USB port	H	lower case

### III.Preparation before using

---

#### 3.1 Battery installation (disassembly)

Install the battery before shipping out the printer.

---

The first use of the battery needs to be fully charged. After long-term storage, **i** battery also need to be fully charged before using, so that the battery can achieve the best use performance.

---

( 1 ) Open the clip in the direction of the arrow.

( 2 ) Remove the batter.



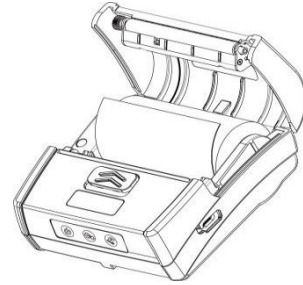
### 3.2 Media

---

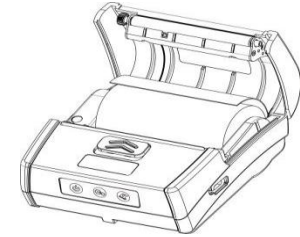


Before printing, please check the media type for printing. Our printer prints labels by default, if you want to print continuous paper, please contact your sales or manufacturer. Please pay attention to the direction of the paper roll. If the paper roll is in the wrong direction, it will result in a failure to print.


---



Install the paper roll.



Please note to the direction of the paper.

This is a wrong case. 

### 3.3 Charging the battery

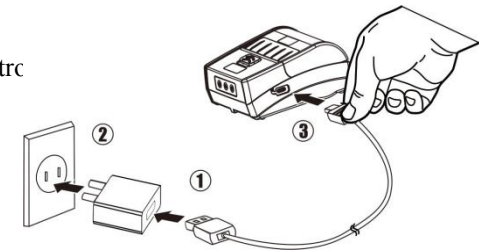
Check the power adapter voltage before connecting the power adapter. If the voltage you use does not match the device, it will damage the adapter and printer. If you use a power adapter that is not provided or approved by our company, the printer may be damaged.

Connect adapter to Type-C power cable①, then connect adapter to socket ②, finally connect with the printer via Type-C power cable③.

Battery power:

(1) When the power of battery displayed on the control Panel is changing, it means the battery is charging.

(2) You can check the current power of battery via the LCD.



The printer power is divided into 4 levels for display:

Empty: less than 15%

1level: 15%~40%

2levels: 40%~70%

3levels: 70%~100%

(3) Do not remove battery during charging.


#### IV.Quick Start Instructions

---




##### 4.1 Power on

When the printer is turned off, you can press  for 2seconds to turn on the printer.

##### 4.2 Power off

When the printer is turned on, you can press  for 2seconds to turn off the printer.

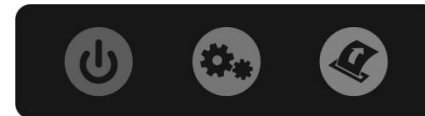
### 4.3 Paper feeding

When printing continuous paper, you press , printer will perform a line feed. When printing black mark paper or labels, you press , printer will perform a form feed. If you press the button for 3 seconds, printer will print the self test page. If you press the  and power on the printer at the same time, printer will enter the download mode.

### 4.4 Control panel

There're three buttons on the control panel, from left to right: power button, setting button and feeding button.

Control panel





Printer status definition

Status	Display	Buzzer
Buffer has data.	Working	/
Buffer is empty.	Print Ready	/
Cover opens	Head Up	Buzz/2s
Paper run out	Paper Out	Buzz/2s
Abnormal label	Calibrate Error	/
No label gap detected	Out Tear Error	/
Print head overheats	Head Hot	/
Energy saving mode	Zzz...	/
FW download mode	Upgrade mode	/
FW is being	Fw Upgrade...	/
Finish the FW	Upgrade OK	Buzz once
Battery is low	BAT Low	/

#### 4.5 Hexadecimal

---

The ways to enter hexadecimal are as follows:

In the boot state, press power key twice quickly, the printer which has paper will print [hexadecimal mode], which indicates that it has entered hexadecimal mode.

Restart the printer can exit hexadecimal mode.

#### 4.6 Self-test

---

Before connecting the printer to the computer, you have to ensure that the printer can work properly. You can print a self-test page to confirm it.

Ensure that the paper is properly installed and the cover of paper case is closed. You power on the printer and press the feed button for 3 seconds, it will print the self-test page.

#### 4.7 Self-test page

---

**Tally**  
**DASCOM**

PRINTER MODEL: DP-230L  
FWVersion: 01.00.00.00  
BOOTVersion: 01.00.03  
CGVersion: TD24CG2.0  
HDVersion: 1.0  
FW TIME: Apr 22 2019 14:58:11  
Machine No:\*\*\*\*\*

**【System Setup】**  
Print speed: 3.0in/s  
Energy Mode: 1min  
Print density: 3  
Emulation: ESC/POS  
Recharge Mode: Fast Charge  
Code Page: CP864  
**【Paper Setup】**  
Print Type: Label/Black  
Top: 0mm  
LeftMargin: 0mm  
**【Hard Parameter】**  
Label AD: 300  
BlackSensor AD: 800  
Paper Out AD: 2800  
PE Sampling AD: 252  
Battery Temp: 25C  
**【Device Setup】**  
Sensor Type: Lable

\*\*\*\*\* End of Test \*\*\*\*\*

Production information

Printing config information

Character printing

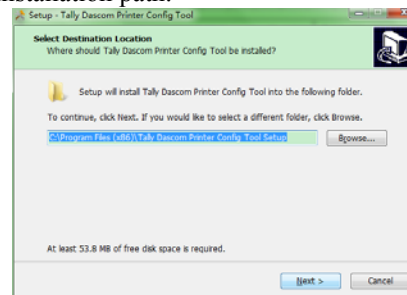
## V. Configuration

---

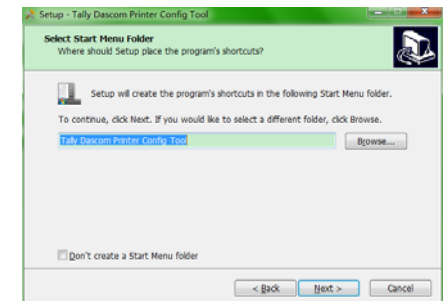
### 5.1 Install Config Tool

---

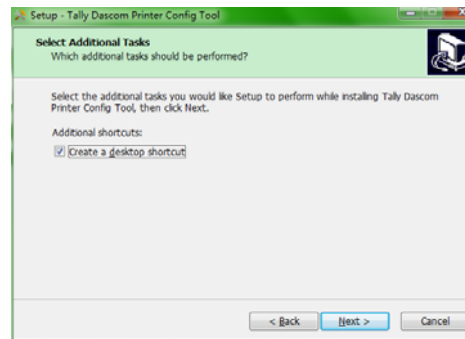
① Click to install "Tally Dascom Printer Config Tool 1.0.02.exe", and the Select installation path.



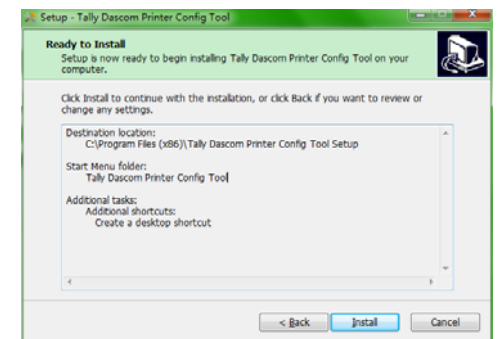
② Click Next:



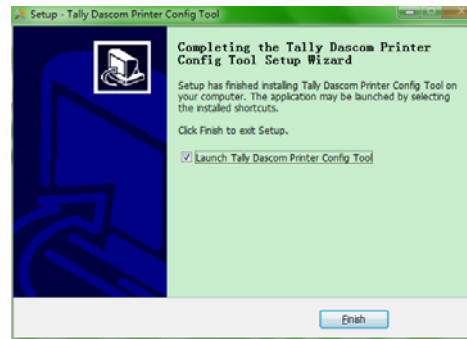
③ Click Next:



④ Click Next, then click Install:



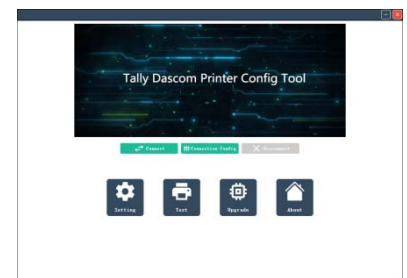
⑤After progress bar is full, you can see the following interface ,click the "Finish" to complete the installation.



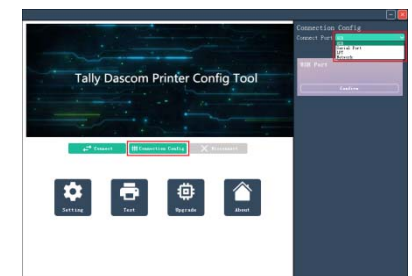


## 5.2 Configuration Setup

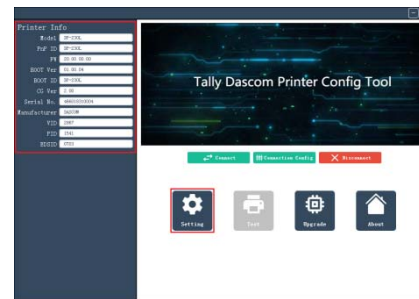
(1) Open the “ Tally Dascom Printer Config Tool 1.0.02.exe”.



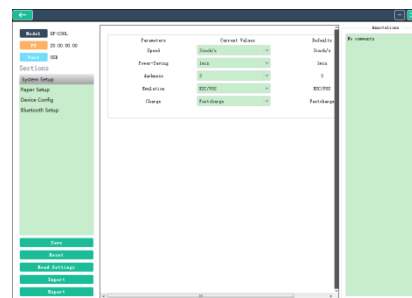
(2) Click “Connect configuration”, drop-down and choose current connection port in the upper-right corner, and set up the relevant interface parameters.



(3) Click “Connect”,interface will shown as below, left red box displays the current printer information. Click the“ Setting”button to make changes to the printer configuration.



(4) Click “setting”,you can change the configurations as follow.



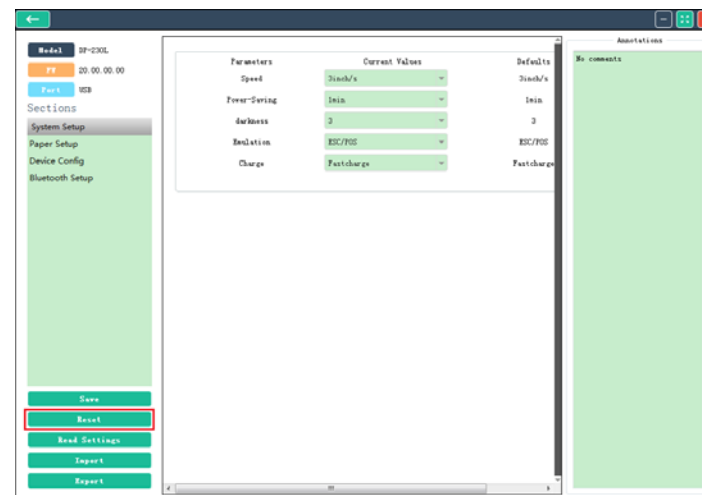
Click on the item you want to modify, select the parameter value, and then click the Save button to complete the settings.

Setting items	Descriptions
Printing speed	The max. printing speed is 3inch/second.
Energy-saving mode	If printer has no print job and no communication with other devices, it will enter the energy-saving mode.
Printing concentration	You can choose1~6,The greater the concentration value, the deeper the print color.
Emulation mode	ESC/POS: ESC/POS Control Code Standard.JPL: JPL Control Code Standard.ZIC : ZIC Control Code Standard.ZPLII: ZPLII Control Code Standard. CPCL:
Charging mode	Charging mode: fast charging/ standard charging
Paper sensor type	Labels: media with gaps.Black mark: black marks on the same side with printing content.Backside black marks: black marks on the back of printing content.

Black mark	Black marks: valid / invalid
Paper type	Continuous paper:Continuous paper Label/Black mark paper: label paper and black mark paper
Top margin	The distance between the upper edge of the paper and the upper edge of the first line of printing content.
Left margin	Set the left border distance of the paper.

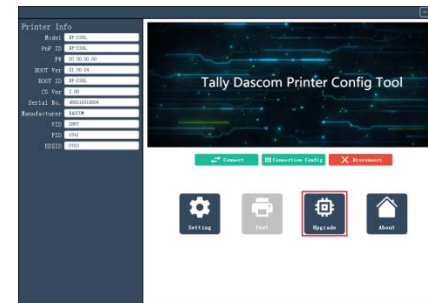
### 5.3 Reset Factory Settings

After online connection, you can click the the "reset" button on the lower left side of settings page, you will see the pop-up confirmation dialog box, click OK to reset factory settings.

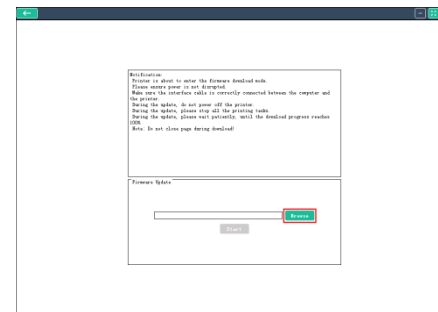


## 5.4 Software upgrade

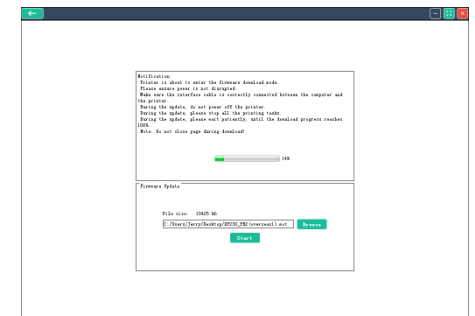
① In standby, connect printer to the computer with a USB cable. Open the “Tally Dascom Printer Config Tool”, after the connection, you will see the interface as shown in the following figure. Click the “Upgrade”.



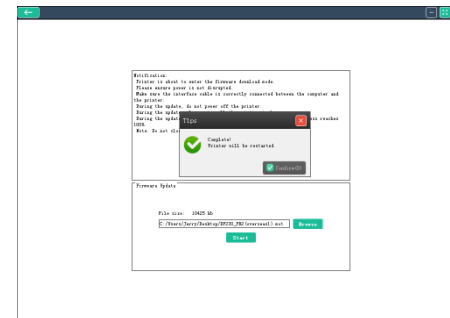
②Click “Browse” to select the version file you want to update, as shown in the following figure.



③After selecting the update file, click the “start” button, the update prompt window will pop up, just click OK. The update process is shown below.



④ After the update, the printer automatically restarts, and the Tally Dascom Printer Config Tool pops up a window to tell you that the update is done.





## VI.Communication

---

There are three communication modes for high reliable portable thermal printer:

Wire: USB

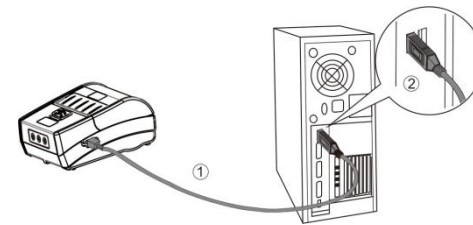
Wireless: Bluetooth or Wi-Fi

### 6.1 USB

---

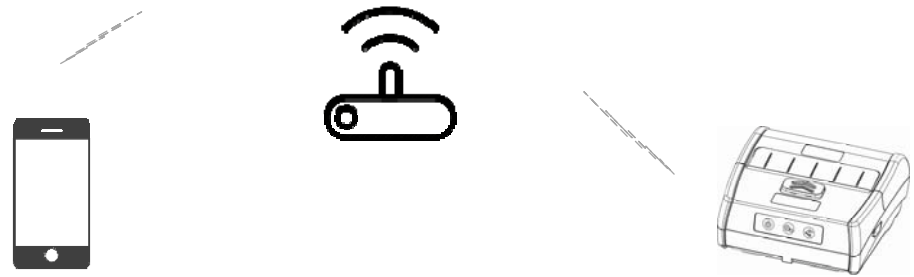
This printer standard configuration interface is USB interface.

①Plug one end of the USB cable into the printer's USB port.②Plug the other end of USB cable into the host.



## 6.2 Wi-Fi

The high reliable portable thermal Wi-Fi printer supports WiFi/IEEE 802.11b/g/n standard communication, WIFI can support AP mode and STA mode, the networking mode is convenient and diverse, the signal strength is very good, and the maximum supporting distance is 300m.



The default communication mode is AP mode.(If you want to use

---

---

customized machine, please ask your vendor for a password.)

When setting up the printer wirelessly, please use the Tally Dascom Printer Config Tool, see the help files for more details.

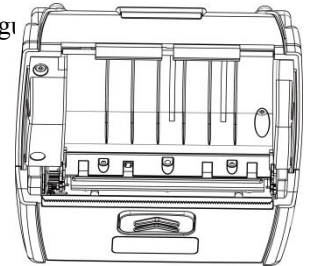
---

## VII. Maintenance

---

### 7.1 Daily maintenance of printers

- ① Cleaning of Printer outer case and paper bin : gently wipe the printer surface and the inside of the paper bin with a wet cloth. Be sure to fully dry the wet cloth.
- ② Clean the mechanism of printer: be sure to clean the mechanism regu



especially when the print quality is not good.



The cleaning method :Gently wipe the mechanism (in the right dotted frame) with a degreasing cotton with anhydrous alcohol until it is wiped clean.

③If water is found inside the printer,please turn off the printer and remove the battery immediately,then have the printer dry.

④If you do not use the printer for a long time, please remove the battery and store the printer separately.

#### 7.2 Use and storage of printing paper

①Please avoid storing New print paper in direct sunlight or high temperature, and do not tear the packaging paper before using.

②The printed documents should be stored at room temperature (about 20 °C), which can effectively prolong the retention time of the documents.

③If the user's documents need to be saved for a long time, please use a long-term thermal printing paper.

## VIII. Troubleshooting

---

Problem	Possible Cause	Solution
Press the power button and the printer does not work.	The battery has not been installed correctly.	Install the battery correctly.
	The battery has run out of power.	Please charge immediately.
Printer automatically shuts down.	The battery has ran out of power.	Please charge or replace the battery immediately.
	Electrostatic discharge	Restart the printer.
The power light is off when the power adapter is connected.	Power adapter does not power on.	Check if the power adapter is properly connected.
	Power adapter is damaged.	Use the voltmeter to check if the adapter voltage is 12VDC
	The battery has not been installed correctly.	Install the battery correctly.
Can not charge the battery.	Battery damage or adapter has quality issue.	You can try to replace battery or adapter.

Problem	Possible Cause	Solution
Poor print quality or ink fades.	The printer does not clean up for a long time, causing the mechanism to be contaminated with dirt.	Clean the mechanism.
	Quality problems of printing Paper	Please purchase approved Media.
No paper feeding.	There is a jam in the paper path, or the media is loaded in reverse.	Check the paper path and install the media again.
	Poor quality of printing paper	Please purchase approved Media.
	The lid of the paper bin is not closed.	Cover the paper bin cover.
Only feeding paper,no printing.	the media is loaded in reverse.	Load the paper correctly according to this user guide.
Can't feed the paper steadily to the label.	Label / Media Sensor contaminated	Cleaning sensor
	Printer does not power on to setup the label Paper fully.	Restart the printer.
	Label threshold is incorrect.	Adjust label threshold
The printer is not	Poor quality of printing paper	Please purchase approved Media.

Problem	Possible Cause	Solution
stable,Or print all the content together.	Use the media with sliding layer.	Reduce maximum print speed
	The lid of the paper bin is not closed.	Cover the paper bin cover.
The printout is garbled.	Emulation language or data code system is not correct.	Setup the correct emulation language and data code system.
The printer accepted the print data, but did not print it.	Low voltage	Please check and charge.
	Media has not been properly loaded.	Properly load media.
	Emulation language or data code system is not correct.	Setup the correct emulation language and data code system.
The printer cannot be printed through an optional interface.	The interface setting is not correct.	Print the self-test page and correct the interface setting.



## IX.Appendix

---

### 9.1 Parameters

Printing parameters	Printing mode	Directly thermal
	Print width	72mm
	Resolution	203dpi
OLED	Standard	128×32dot matrix
Speed	Speed	3inch/s
	Emulation	ESC/POS、JPL、ZIC、ZPLII、CPCL
	Character	GB18030
	Barcode	One dimensional code: UPC-A、UPC-E、EAN-8、EAN-13、Codabar、Code39、ITF、Code128、 QR code: QRCode、PDF417、DataMatrix
Media	Type	Thermal paper / thermal label
	Thickness	60-150μm
	Width	80mm

	Maximum outer diameter	45mm
Sensor	Open sensor	Yes
	Paper end	Yes
	Label sensor	Optional
Memory	SDRAM	32Mbyte (Integrated into the SOC)
	Flash	8+32Mbyte (2 PCS)
Port	USB	Standard
	Bluetooth/WIFI	Standard
Software	SDK	Android,IOS
	DEMO'S	Android,IOS
Battery	Battery	Within 7.2V/2200mAH
	Life	Cycle charge more than 500 times
	Adapter output power supply	12-24V
Size	Size	111mm*112mm*56mm

	Weight	Within 300g (do not include battery)
	MTBF	10000 hours
	Level of protection	IP54
	Buzzer	Yes
Accessories	AC adapter	Standard
	DC to Type-C power cable	Standard
Setup tool	Provide the setup tool which can be used under WINXP,7,8 system and Wi-Fi mode.	

9.2DASCOM representative

GERMANY  
DASCOM Europe GmbH  
Heuweg 3  
D-89079 Ulm  
Deutschland  
Tel.: +49 (0) 731 2075 0  
Fax: +49 (0) 731 2075 100  
[www.dascom.com](http://www.dascom.com)

SINGAPORE (ASIA PACIFIC)  
DASCOM AP Pte Ltd  
2 Jurong East Street 21

#05-42, IMM Building  
Singapore 609601  
Phone: +65 6760 8833  
Fax: +65 6760 1066  
[www.dascom.com](http://www.dascom.com)

FRANCE  
DASCOM Europe GmbH  
117 Avenue Victor Hugo  
92100 Boulogne-Billancourt  
France

Phone: +33 (1) 73 02 51 98  
www.dascom.com

UNITED KINGDOM  
DASCOM GB Ltd  
Hart House, Priestley Road,  
Basingstoke, Hampshire  
RG24 9PU, England  
Phone: +44 (0) 1256 355130  
Fax: +44 (0) 1256 481400  
www.dascom.com

AMERICAS  
DASCOM Americas Corporation

34 Lakeview Court  
Verona, VA 24482  
USA

Phone: +1 (877) 434 1377  
Fax: +1 (540) 242 7221  
www.dascom.com

CHINA  
JIANGMEN DASCOM COMPUTER  
PERIPHERALS CO., LTD  
No.399, jinxing Road,  
Jianghai District Jiangmen,  
P.R. China  
www.dascom.co

