

FIGURE 01A
TOP OF MH01 TRANSMITTER

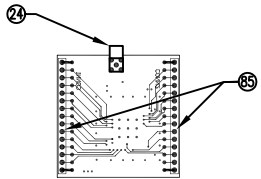


FIGURE 01B
BOTTOM OF MH01 TRANSMITTER

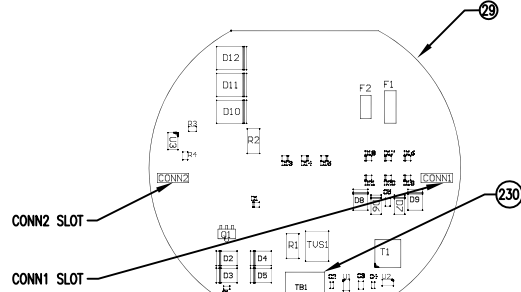


FIGURE 02
TOP OF MARK POWER PCA

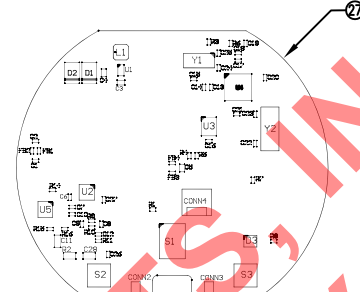


FIGURE 03A
TOP OF MARK MAIN PCA

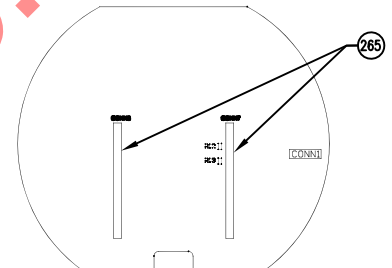


FIGURE 03B
BOTTOM OF MARK MAIN PCA

STEP 1: TRANSMITTER

1. ATTACH THE ANTI-STATIC WRIST STRAP TO WRIST PER W.I. 012575.98.
2. REMOVE MH01 TRANSMITTER PCA (ITEM 124) FROM PANEL PER W.I. 771500.00.
3. PLACE PCA ON ANTI-STATIC PAD, COMPONENT SIDE UP. SEE FIGURE 01A.
4. VERIFY PROTECTIVE SHIELD (ITEM 187) IS INSTALLED OVER IC.
5. TURN OVER AND PLACE PCA ONTO ANTI-STATIC PAD. SEE FIGURE 01B.

STEP 2: POWER BOARD

6. REMOVE POWER PCA (ITEM 29) FROM PANEL PER W.I. 771510.00.
7. PLACE PCA ON ANTI-STATIC PAD, COMPONENT SIDE UP.
NOTE: ENSURE THE TERMINAL BLOCK (ITEM 230) IS AT THE BOTTOM OF THE PCA. SEE FIGURE 02.
- NOTE: REFER TO 001789-07 FOR BATTERY PCA INSTRUCTIONS.
8. INSERT PCB CONNECTORS CONN1 AND CONN2 OF BATTERY PCA INTO CORRESPONDING SLOTS IN THE POWER PCA. PRESS GENTLY INTO PLACE.

STEP 3: MAIN BOARD

9. REMOVE MAIN BOARD PCA FROM PANEL PER W.I. 771510.00.
10. PLACE PCA ON ANTI-STATIC PAD, COMPONENT SIDE DOWN.
11. WITH THE TRANSMITTER POSITIONED COMPONENT-SIDE DOWN, ALIGN TERMINAL PINS (ITEM 85) WITH PCA CONNECTORS (ITEM 265) OPENINGS. ENSURE CABLE CONNECTOR (ITEM 53) IS OVER THE BOARD INDENT.
12. PRESS THE TRANSMITTER GENTLY INTO PLACE.

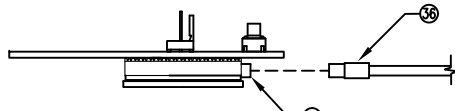


FIGURE 4
SIDE OF MAIN BOARD AND MH01

STEP 4: ANTENNA CONNECTION

13. ATTACH THE MALE END OF THE RF CABLE ASSEMBLY (ITEM 36) TO THE FEMALE CONNECTOR (ITEM 24) ON THE TRANSMITTER.

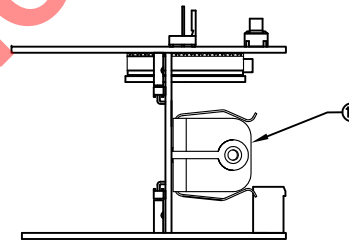


FIGURE 05A
SIDE OF MARK PCA ASSEMBLY

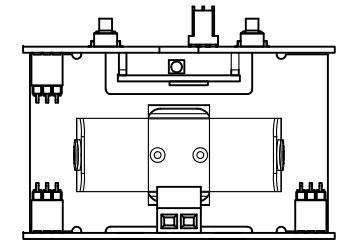


FIGURE 05B
FRONT OF MARK PCA ASSEMBLY

STEP 5: PCA ASSEMBLY

- NOTE: REFER TO 114606-00 GENERAL PRINTED CIRCUIT BOARD ASSEMBLIES FOR REQUIREMENTS. THE FINAL PCA ASSEMBLY SHOULD BE CONSTRUCTED AS IN FIGURE 05A WHEN VIEWED FROM THE EDGE-ON VIEW OF THE BATTERY PCA WHEN THE BATTERY BRACKET (ITEM 16) IS ON THE RIGHT, AND AS FIGURE 05B WHEN VIEWED FROM THE SIDE THE BATTERY BRACKET (ITEM 16) IS MOUNTED.
- NOTE: RF CABLE ASSEMBLY IS NOT SHOWN.

MODIFICATION PROHIBITED:
PURSUANT TO FCC 15.21 OF THE FCC RULES, CHANGES NOT EXPRESSLY APPROVED BY DWYER INSTRUMENTS, INC. MIGHT CAUSE HARMFUL INTERFERENCE AND VOID THE FCC AUTHORIZATION TO OPERATE THIS PRODUCT.

RF WARNING:
THIS PRODUCT COMPLIES WITH FCC OET BULLETIN 65 AND INDUSTRY CANADA'S RSS-102 RADIATION EXPOSURE LIMITS SET FORTH FOR AN UNCONTROLLED ENVIRONMENT.

CONDITIONS OF USE:
THIS DEVICE COMPLIES WITH PART 15 OF THE FCC RULES AND INDUSTRY CANADA LICENSE-EXEMPT RSS STANDARD(S). OPERATION IS SUBJECT TO THE FOLLOWING TWO CONDITIONS: (1) THIS DEVICE MAY NOT CAUSE HARMFUL INTERFERENCE, AND (2) THIS DEVICE MUST ACCEPT ANY INTERFERENCE RECEIVED, INCLUDING INTERFERENCE THAT MAY CAUSE UNDESIRABLE OPERATION.

This drawing represents a component or product which is approved or recognized by the following agencies:
 UL LISTED: DEKRA/KEMA IEC
 CE OFM DECEX/DEKRA
 CSA BCSA IKT
 INDUSTRY CANADA (INMETRO)/NCC
 No modifications permitted without the approval of Regulatory and Design Engineering

CHANGES TO PROCEDURE PROHIBITED WITHOUT REVIEW BY REGULATORY ENGINEERING.

		DATE	NAME	MATERIAL
		12-17-15	WORK INSTRUCTION	
		OWN BY	MH01 TRANSMITTER INSTALLATION	FINISH
		DGH	MARK 491	
		CHKD		
		APPD		
NO.	CHANGES	BY/DATE	APPD	
				ACAD2002
NOTICE: This drawing and the principles and elements of design embodied therein are the exclusive property of DWYER INSTRUMENTS, INC. and are not to be reproduced or used in any way without the written consent of said corporation.				3

23 = CRITICAL DIMENSION
 STANDARD TOLERANCES UNLESS NOTED:
 ALL DECIMAL DIMENSIONS ± .005
 ALL ANGLES ± 1°

SCALE 1:1

SHEET 1 OF 1

DWYER INSTRUMENTS, INC.
 MICHIGAN CITY, INDIANA 46360 U.S.A.

FR. NO. 001789-00