



INSTRUCTIONS

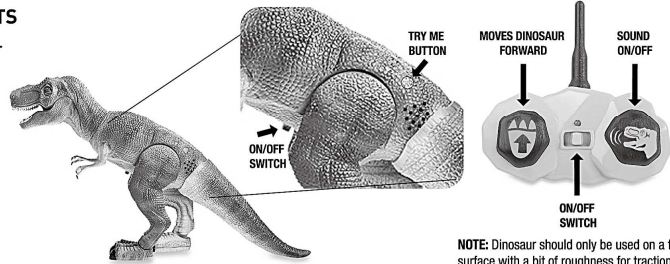
AGES
6+

INTRODUCTION

Congratulations on your purchase of the RC T-Rex Radio Controlled Action Dinosaur. Please read all instructions and warnings in this sheet prior to using your Dinosaur. Keep this instruction sheet as it contains important information for future reference.

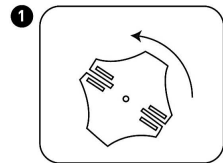
CONTENTS

- Dinosaur
- Remote

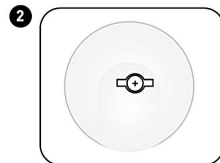


NOTE: Dinosaur should only be used on a flat surface with a bit of roughness for traction.

REMOVE THE REMOTE AND RC T-REX FROM PACKAGING

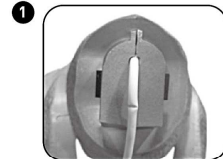


1 Remove the remote by turning counter clockwise the plastic keylock.

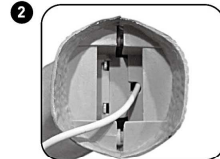


2 Using a Phillips head screwdriver, unscrew the T-Rex RC from the insert.

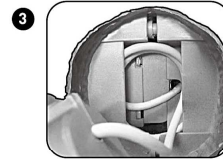
ATTACH THE TAIL



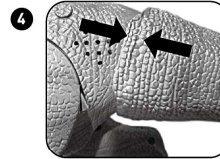
1 Locate the white cord connected to the dinosaur's body.



2 Note the recessed area on the inside of the tail. Continued on back.



3 Coil the white cord into the recessed area of the tail to close the gap between the tail and body of the dinosaur.



4 Align the recessed area of the tail to the body and press the tail into the body until it clicks.

RC T-Rex Radio Controlled Action Dinosaur

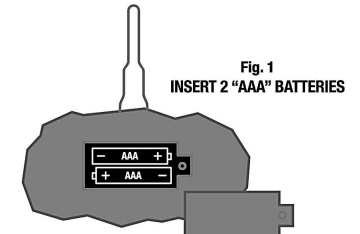
7.5"
(19.1 cm)

BACK

INSTALLING THE REMOTE'S BATTERIES

Operation requires 3 "AA" 1.5V batteries (included) for the dinosaur, and 2 "AAA" batteries for the radio controller (not included).

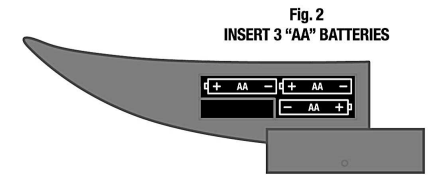
- Using a screwdriver, remove the screw from the battery compartment.
- Open the battery compartment door and insert 2 "AAA" batteries (Fig. 1).
- Using a screwdriver, attach the battery compartment door back onto the remote.



INSTALLING THE DINOSAUR'S BATTERIES

NOTE: For best results, replace dinosaur batteries upon purchase.

- Locate the battery compartment located on the side of the tail.
- Using a screwdriver, remove the screw from battery compartment.
- Open the battery compartment door and insert 3 "AA" batteries (Fig. 2).
- Using a screwdriver, attach the battery compartment door back onto the dinosaur's tail.



NOTE: This equipment has been tested and found to comply with the limits for a Class B digital device, pursuant to Part 15 of the FCC Rules. These limits are designed to provide reasonable protection against harmful interference in a residential installation. This equipment generates, uses, and can radiate radio frequency energy and, if not installed and used in accordance with the instructions, may cause harmful interference to radio communications. However, there is no guarantee that interference will not occur in a particular installation. If this equipment does cause harmful interference to radio or television reception, which can be determined by turning the equipment off and on, the user is encouraged to try to correct the interference by one or more of the following measures:

- Reorient or relocate the receiving antenna.
- Increase the separation between the equipment and receiver.
- Connect the equipment into an outlet on a circuit different from that to which the receiver is connected.
- Consult the dealer or an experienced radio TV technician for help.

WARNING: Changes or modifications not expressly approved by the party responsible for compliance could void the user's authority to operate the equipment.

FCC This device complies with Part 15 of the FCC Rules. Operation is subject to the following two conditions: (1) this device may not cause harmful interference, and (2) this device must accept any interference received, including interference that may cause undesired operation.

BATTERY WARNING:

- Do not mix old and new batteries.
 - Do not mix alkaline, standard (carbon-zinc), or rechargeable batteries.
 - Insert batteries using the correct polarity. Do not short-circuit the supply terminal.
 - Remove batteries when not in use. Recycle or dispose of exhausted batteries according to federal, state, and local laws. Do not dispose of batteries in a fire - they may leak or explode.
 - Only use manufacture specified battery(ies), charger(s) and/or adapter, if applicable, specified by the manufacturer.
 - Always use, replace, and recharge (if applicable) batteries under adult supervision.
- KEEP THIS PACKAGING FOR REFERENCE AS IT CONTAINS IMPORTANT INFORMATION.

SAFETY WARNINGS - PLEASE READ BEFORE USING PRODUCT

- Not recommended for children under 6 years of age. As with all electrical products, precautions should be observed during handling and use to reduce the risk of electrical shock.
- It is recommended that this toy and all accessories be periodically examined for potential hazards and that any potentially hazardous parts be repaired or replaced.

CLEANING

- Use a soft and damp sponge only. Never drop water or any other liquid onto the Dinosaur.
- Do not immerse the product into water for cleaning.

STORAGE

- Remove the batteries when the product is not in use for a long period of time.
- Put the product into its package when not in use and store neatly in a dry, cool location protected from direct sunlight.

For customer support, please visit www.merchsource.com or call 1-800-374-2744.

The artwork and design of this package are protected by US copyright law and may not be reproduced, distributed, displayed, published or used for any purpose without prior written permission. It is not permitted to alter, remove or reproduce any trademarks or copyright notice from this package.

©2018 Discovery Communications, LLC. Discovery™ and the Discovery™ logo are trademarks of Discovery Communications, LLC, used under license. All rights reserved. www.discoverykids.com

©2017, 2018 MerchSource, LLC. All rights reserved. Distributed by MerchSource, LLC, Irvine, CA 92618.

Patent ZL201430255276.5

