

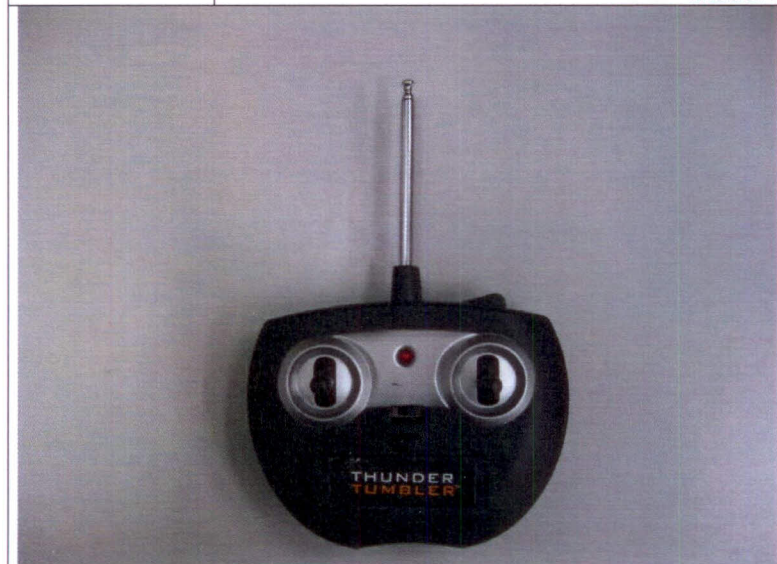


TEST REPORT No: (5211)343-0300

## TEST REPORT

To:	<b>GUANGDONG FEILUN TECHNOLOGY INDUSTRIAL CO., LTD.</b>	To:	-
Attn:	SHAONA CAI	Attn:	-
Address:	LAIMEI INDUSTRIAL, FENGXIANG CHENGHAI, SHANTOU CITY, GUANGDONG, CHINA	Address:	-
Fax:	--	Fax:	-
E-mail:	--	E-mail:	-
Folder No.:			--

Factory name:	<b>GUANGDONG FEILUN TECHNOLOGY INDUSTRIAL CO., LTD</b>
Location:	LAIMEI INDUSTRIAL, FENGXIANG CHENGHAI, SHANTOU CITY, GUANGDONG, CHINA
Product:	Toy RC Monster Spinning Car V Clear Wheels/Thunder Tumbler Model No.: 1645854

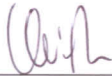



Sample No:	(5211)343-0300
Test date:	December 23, 2011 To December 29, 2011
Test Requested:	FCC Part 15 – 2010
Test Method:	ANSI C63.4 – 2009
FCC ID:	Z6QFL164585449

The results given in this report are related to the tested specimen of the described electrical apparatus.

**CONCLUSION:** The submitted sample was found to COMPLY with requirement of FCC Part 15 Subpart C.

Authorized Signature:

	
Reviewed by: Keith Yeung	Approved by: Steven Tsang
Date: January 18, 2012	Date: January 18, 2012

**BUREAU VERITAS HONG KONG LIMITED –**  
**Kowloon Bay Office**  
 1/F Pacific Trade Centre,  
 2 Kai Hing Road, Kowloon Bay,  
 Kowloon, HONG KONG  
 Tel: +852 2331 0888  
 Fax: +852 2331 0889  
 www.cps.bureauveritas.com

This report is intended for your exclusive use. Any copying or replication of this report to or for any other person or entity, or use of our name or trademark, is permitted only with our prior written permission. Our report is limited to the test samples identified herein. The results set forth in this report are not necessarily indicative or representative of the statistical quality or characteristics of the lot from which a test sample was taken or any similar or identical product unless specifically and expressly noted. Our report includes all of the tests requested by you and the results thereof. You shall have thirty days from receipt of this report to request additional testing of the samples or to notify us of any errors or omissions relating to our report, provided, however, such notice shall be in writing and shall specifically address the issue you wish to raise. A failure to raise such issue within the prescribed time shall constitute your unqualified acceptance of the completeness of this report, the tests conducted and the correctness of the report contents.



## TEST REPORT No: (5211)343-0300

### Location of the test laboratory

Radiated and Conducted emissions measurements are investigated and taken pursuant to the procedures of ANSI C63.4 – 2009. An Open Area Test Site and Full Anechoic Chamber (FCC Listed Site, Registration No. 642151) are set up for investigation and located at :

### BUREAU VERITAS HONG KONG LIMITED, EMC CENTRE

No. 2106-2107, 21/F., Westin Centre,  
26 Hung To Road,  
Kwun Tong, Kowloon,  
Hong Kong

### List of measuring equipment

#### Radiated Emission

EQUIPMENT	MANUFACTURER	MODEL NO.	SERIAL NO.	CALIBRATION DUE
EMI TEST RECEIVER	R&S	ESCI	100379	18-OCT-2012
BILOG ANTENNA	SCHAFFNER	CBL6112D	25229	07-AUG-2012
OPEN AREA TEST SITE	BVCPS	N/A	N/A	16-SEP-2012
ANECHOIC CHAMBER	ALBATROSS	M-CDC	80374004499B	07-JUL-2012
COAXIAL CABLE	SUHNER	N/A	N/A	26-OCT-2012

#### Remarks:-

N/A : Not Applicable or Not Available

The measurement instrumentation uncertainty would be taking into consideration on each of the test result

## TEST REPORT No: (5211)343-0300

### Equipment Under Test [EUT]

#### Description of Sample:

Model Name: Toy RC Monster Spinning Car V Clear Wheels/Thunder  
Tumbler  
Model Number: 1645854  
Rating: 9Vd.c. ("6F22" size battery x 1)

#### Description of EUT Operation:

The Equipment Under Test (EUT) is a GUANGDONG FEILUN TECHNOLOGY INDUSTRIAL CO., LTD. It is 2 sticks, 1 switch and 1 button transmitter and operating at 49.86MHz. The EUT continues to transmit while sticks are being pushed or pulled, Modulation by IC, and type is pulse modulation.

The transmitter has different control:

1. Left stick – left motor control
2. Right stick – right motor control
3. Action button – car stand up control
4. ON/OFF switch – ON/OFF control

#### Antenna Requirement (Section 15.203)

The EUT is use of a screw-on type antenna. The antenna consists of 35cm long metal antenna. The antenna connector is custom-made and not be able to found in the market. It also cannot be replaced with other antenna other then the one bundled inside the package. The requirements of S15.203 are met. There are no deviations or exceptions to the specifications.

**Photo of Antenna**



## TEST REPORT No: (5211)343-0300

### Test Results

#### Radiated Emissions (Fundamental)

Test Requirement: FCC Part 15 Section 15.235  
 Test Method: ANSI C63.4  
 Test Date(s): 2011-12-29  
 Temperature: 21.0 °C  
 Humidity: 63.0 %  
 Atmospheric Pressure: 100.8 kPa  
 Mode of Operation: Transmission mode  
 Tested Voltage: 9Vd.c. ("6F22" size battery x 1)

#### Test Procedure:

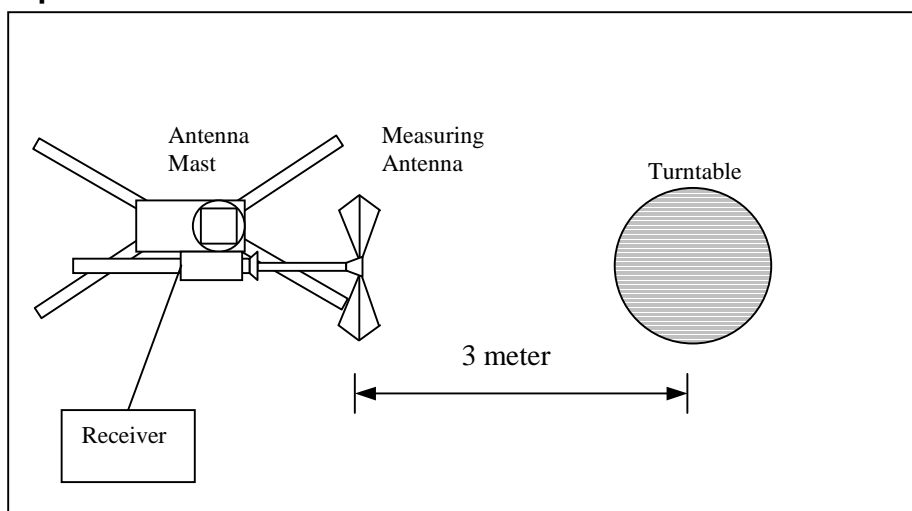
Radiated emissions measurements are investigated and taken pursuant to the procedures of ANSI C63.4 – 2009.

The equipment under test (EUT) was placed on a non-conductive turntable with dimensions of 1.5m x 1m and 0.8m high above the ground. 3m from the EUT, a broadband antenna mounting on the mast received the signal strength. During the test, each emission was maximized by: having the EUT continuously working, investigated all operating modes, rotated about all 3 axis (X, Y & Z) and considered typical configuration to obtain worst position, manipulating interconnecting cables, For battery operated equipment, the equipment tests shall be perform using new battery. The turntable was rotated to maximize the emission level. The antenna was then moving along the mast from 1m up to 4m until no more higher value was found. Both horizontal and vertical polarization of the antenna were placed and investigated.

For below 30MHz, a loop antenna with its vertical plane is place 3m from the EUT and rotated about its vertical axis for maximum response at each azimuth about the EUT. And the centre of the loop shall be 1m above the ground.

Location: The Roof, Westin Centre, 26 Hung To Road, Kwun Tong, Kowloon, Hong Kong

#### Test Setup: Open Area Test Site





**TEST REPORT No: (5211)343-0300**

**Limits for Field Strength of Fundamental Emissions [FCC 47CFR 15.235]:**

Frequency Range of Fundamental [MHz]	Field Strength of Fundamental Emission [Peak] [μV/m]	Field Strength of Fundamental Emission [Average] [μV/m]
49.82 – 49.90	100,000 (100 dBμV/m)	10,000 (80 dBμV/m)

**Measurement Data**

**Test Result of (Transmission mode): PASS**

**Detection mode: Peak**

Frequency (MHz)	Polarity (H/V) and degree	Antenna Factor and Cable Loss (dB/m)	Field Strength at 3m (dBμV/m)	Limit at 3m (dBμV/m)	Margin (dB)
49.86	V	6.5	55.2	100	-44.8

**Detection mode: # Average**

Frequency (MHz)	Polarity (H/V) and degree	Antenna Factor and Cable Loss (dB/m)	Field Strength at 3m (dBμV/m)	Limit at 3m (dBμV/m)	Margin (dB)
49.86	V	6.5	**49.9	80	-30.1

# For pulse modulated devices and using measuring equipment employing a peak detection mode, properly adjusted for such factor as pulse desensitisation.

\*\*Duty Cycle Correction =  $20\text{Log}(0.545) = -5.3\text{dB}$

Note: Field Strength includes Antenna Factor and Cable Loss.

Receiver setting: RBW = 100KHz  
VBW = 300KHz



## TEST REPORT No: (5211)343-0300

### Radiated Emissions (9kHz – 1GHz)

Test Requirement: FCC Part 15 Section 15.209  
Test Method: ANSI C63.4  
Test Date(s): 2011-12-29  
Temperature: 21.0 °C  
Humidity: 63.0 %  
Atmospheric Pressure: 100.8 kPa  
Mode of Operation: Transmission mode  
Tested Voltage: 9Vd.c. ("6F22" size battery x 1)

#### Limits for Radiated Emissions [FCC 47 CFR 15.209]:

Frequency Range [MHz]	Quasi-Peak Limits [ $\mu$ V/m]
1.705-30	300
30-88	100
88-216	150
216-960	200
Above960	500





**TEST REPORT No: (5211)343-0300**

**Measurement Data**

**Test Result of (Transmission mode): PASS**

**Detection mode: Quasi-Peak**

Frequency (MHz)	Polarity (H/V)	Antenna Factor and Cable Loss (dB/m)	Field Strength at 3m (dBμV/m)	Limit at 3m (dBμV/m)	Margin (dB)
99.72	H	11.1	22.3	43.5	-21.2
149.58	H	10.2	20.8	43.5	-22.7
199.44	H	7.7	20.9	43.5	-22.6
249.30	H	12.5	21.8	46.0	-24.2
299.16	H	14.3	24.6	46.0	-21.4
349.02	H	15.6	26.1	46.0	-19.9
398.88	H	16.4	26.8	46.0	-19.2
448.74	H	17.0	27.4	46.0	-18.6
498.60	H	17.1	28.5	46.0	-17.5
548.46	H	19.0	31.6	46.0	-14.4

Frequency (MHz)	Polarity (H/V)	Antenna Factor and Cable Loss (dB/m)	Field Strength at 3m (dBμV/m)	Limit at 3m (dBμV/m)	Margin (dB)
99.72	V	11.1	21.6	43.5	-21.9
149.58	V	10.2	21.1	43.5	-22.4
199.44	V	7.7	20.9	43.5	-22.6
249.30	V	12.5	22.4	46.0	-23.6
299.16	V	14.3	24.2	46.0	-21.8
349.02	V	15.6	25.4	46.0	-20.6
398.88	V	16.4	26.3	46.0	-19.7
448.74	V	17.0	27.8	46.0	-18.2
498.60	V	17.1	29.0	46.0	-17.0
548.46	V	19.0	31.7	46.0	-14.3

Note: Field Strength includes Antenna Factor and Cable Loss.

Receiver setting: RBW = 120KHz  
 VBW = 120KHz



## TEST REPORT No: (5211)343-0300

### 26dB Bandwidth of Fundamental Emission

Test Requirement: FCC 47 CFR 15.235  
Test Method: ANSI C63.4:2009 (Section 13.1.7)  
Test Date(s): 2011-12-23  
Temperature: 21.0 °C  
Humidity: 63.0 %  
Atmospheric Pressure: 100.8 kPa  
Mode of Operation: Transmission mode  
Tested Voltage: 9Vd.c. ("6F22" size battery x 1)

#### Test Method:

The bandwidth is measured at an amplitude level reduced from the reference level by a specified ratio. The reference level is the level of the highest amplitude signal observed from the transmitter at the fundamental frequency. Once the reference level is established, the equipment is conditioned with typical modulating signal to produce the worst-case (i.e. the widest) bandwidth.

#### Limits for 26dB Bandwidth of Fundamental Emission:

Frequency [MHz]	26dB Bandwidth [KHz]	Limits [MHz]
49.8602	96.8	within 49.82-49.90

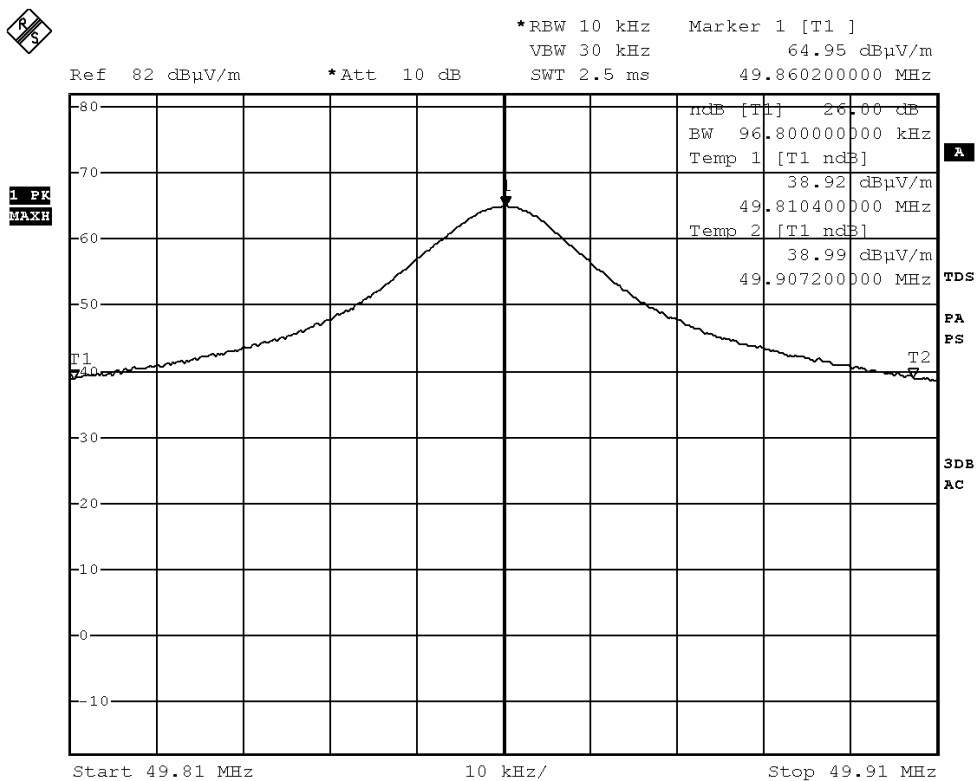




**TEST REPORT No: (5211)343-0300**

**Measurement Data :**

**Test Result of 26dB Bandwidth of Fundamental Emission: PASS**



Date: 23.DEC.2011 13:16:29



## TEST REPORT No: (5211)343-0300

### Duty Cycle Correction During 100msec:

Each function key sends a different series of characters, but each packet period (81.96msec) never exceeds a series of 4 long (1.56msec) and 64 short (0.6msec) pulses. Assuming any combination of short and long pulses maybe obtained due to encoding the worst case transmit duty cycle would be considered  $(4 \times 1.56\text{msec}) + (64 \times 0.6\text{msec})$  per 81.96msec = 54.5% duty cycle. Figure A through C shows the characteristics of the pulse train for one of these functions.

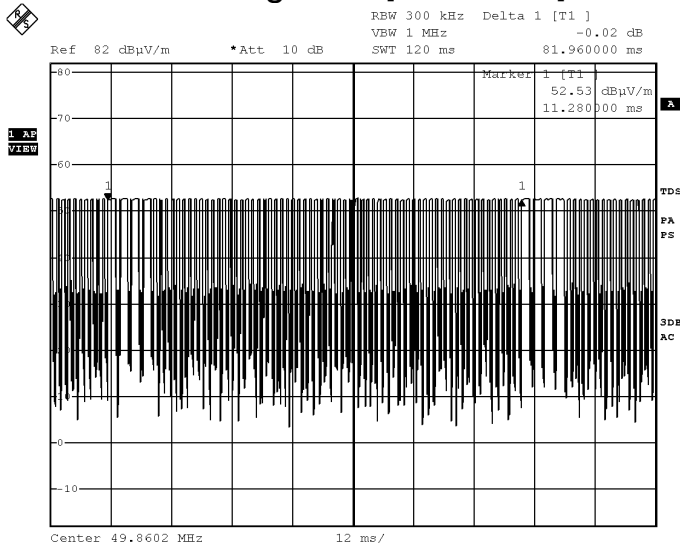
Remarks:

Duty Cycle Correction =  $20\text{Log}(0.545) = -5.3\text{dB}$

The following figures [Figure A to Figure C] show the characteristics of the pulse train for one of these functions.

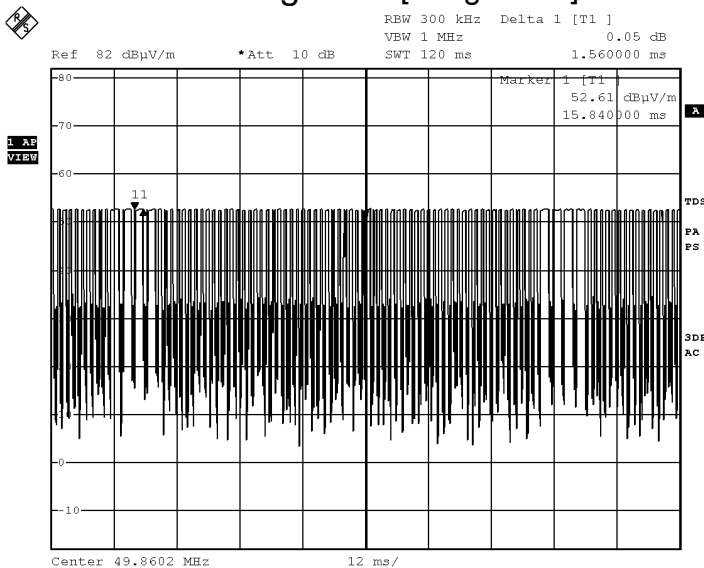
**TEST REPORT No: (5211)343-0300**

**Figure A [Pulse Train]**



Date: 23.DEC.2011 13:20:17

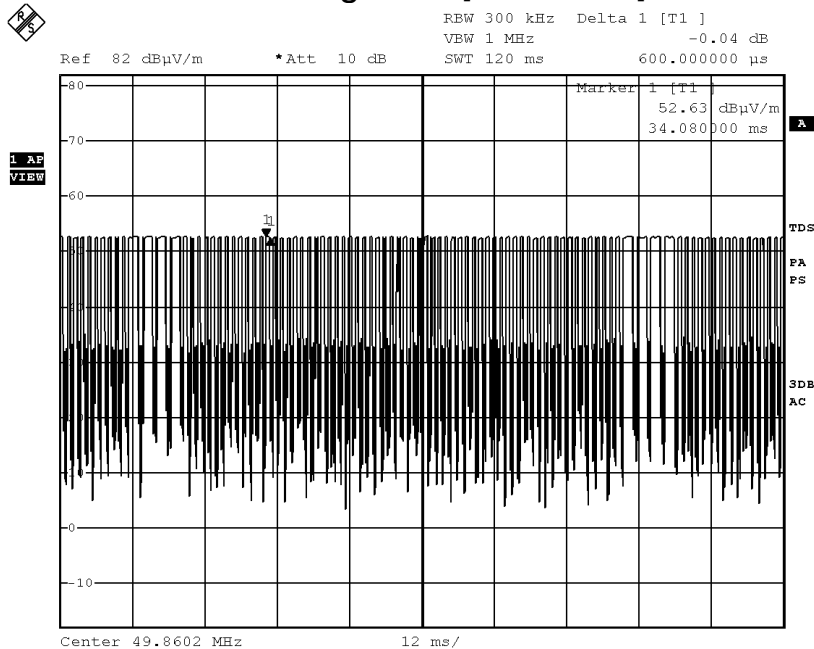
**Figure B [Long Pulse]**



Date: 23.DEC.2011 13:20:49

**TEST REPORT No: (5211)343-0300**

**Figure C [Short Pulse]**



Date: 23.DEC.2011 13:21:14

TEST REPORT No: (5211)343-0300

### Photographs of EUT

Front View of the product



Rear View of the product



Battery compartment



Battery Cover



**TEST REPORT No: (5211)343-0300**

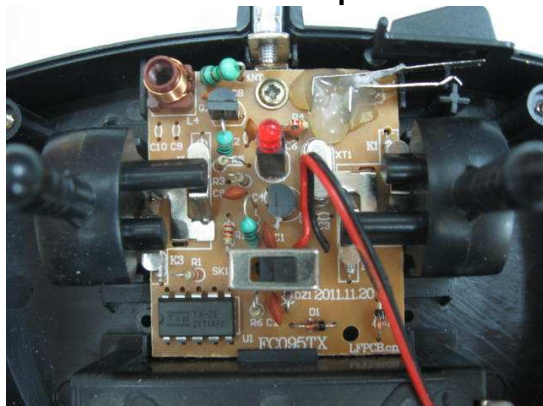
**Front View of the product (Internal)**



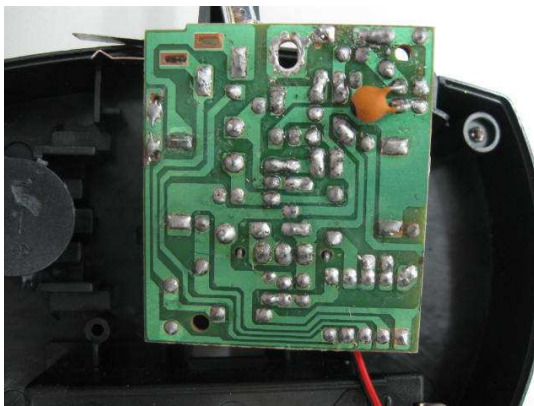
**Rear View of the product (Internal)**



**Inner Circuit Top View**



**Inner Circuit Bottom View**





**TEST REPORT No: (5211)343-0300**

**Measurement of Radiated Emission Test Set Up**



**\*\*\*\*\* End of Report \*\*\*\*\***