

Rechargeable 2.4GHz DX-1 MICRO DRONE

GETTING TO KNOW YOUR DRONE

PLEASE READ ALL WARNINGS AND INSTRUCTIONS PRIOR TO USE. KEEP THIS DOCUMENT AS IT CONTAINS IMPORTANT INFORMATION ABOUT YOUR DRONE.



1. CHARGING

- Drone must be charged before each use (USB cable included)
• Indicator light will turn off once fully charged
• Install batteries in remote

2. PAIRING

- Before each flight pair the remote with the drone.
1. Turn your drone on and place on a flat, level surface
2. Turn on the remote on and move the left joystick down, then up, then down again
3. The beep will indicate successful pairing

3. DIRECTIONAL LIGHTS

- White lights indicate the front of the drone
• Red lights indicate the back of the drone
• Not applicable in auto-orientation mode

4. REMOTE CONTROL OVERVIEW

- Practice flying your drone below 10 feet and at low speeds until comfortable with all controls to avoid unnecessary damage or injury
• Left joystick:
- Up/Down controls elevation
- Left/Right controls spin
• Right joystick: controls flight direction
• Directional LED: use to eliminate drift
• To cut power to drone, move left joystick to power down position

QUESTIONS OR CONCERN? PLEASE GIVE US A CALL... WE'RE HERE TO HELP

CUSTOMER SERVICE (800) 374-2744

Before casting please locate the 10-digit code printed on the back of your remote



CHOKING HAZARD - ALL PARTS ARE SMALL. KEEP AWAY FROM CHILDREN.

Rechargeable 2.4GHz DX-1 MICRO DRONE

INTRODUCTION

Congratulations on your purchase of the Sharper Image Rechargeable 2.4 GHz DX-1 Micro Drone. Get ready to soar to new heights. Master the art of drone flying with remote control maneuverability. This lightweight micro drone will provide hours of fun.

SPECIFICATIONS

Drone Battery: 100-mAh LiPo Remote Controller Battery: 2 x 1.5V AAA Charging Time: Approximately 30 minutes Maximum Recommended Altitude: 65 ft.

TABLE OF CONTENTS

General Warnings Page 1
Contents and Remote Battery Installation Page 2
Charging LiPo and Drone Storage Page 3
Blade Guard Installation Page 4
Remote Control and Drone Overview Page 5
Operating Drone Page 6
Modes and Replacing Propellers Page 7
Troubleshooting and FCC Warning Page 8

Rechargeable 2.4GHz DX-1 MICRO DRONE

READ ALL WARNINGS AND PRECAUTIONS BEFORE USE

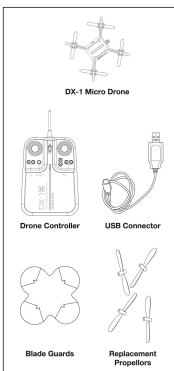
SAFETY WARNINGS:

- Not recommended for children under 12 years of age. As with all electrical products, precaution should be observed during handling and use to reduce the risk of electrical shock.
• Adult supervision is required at all times.
• Before each use, an adult should review the product and battery to determine that no damage or hazards exist.
• DO NOT TOUCH SPINNING PROPELLERS
- Prevent contact with spinning blades by turning off remote prior to handling drone.
- Use caution and pay attention to your surroundings while operating drone.
• Do not fly drone into animals, people, or inanimate objects.
• Keep drone away from power lines, buildings, trees, public areas, and any other potentially hazardous areas.
• Do not operate in rain, heavy wind, or any type of severe weather.
• Do not land drone on wet surfaces.
• Never touch or allow others to touch drone while it is flying.
• Always turn drone off when it is not in use.
• Always fly drone in large open areas.
• Never fly drone above or near people, sudden changes in wind or other conditions could lead to unexpected crashes.
• Always use caution when flying drone vehicles, obey relevant laws, respect the privacy and property rights of others.
• This drone shall never be modified or used for anything except its intended purpose.

PLEASE RECYCLE OR DISPOSE OF ELECTRONICS PROPERLY RECYCLING INFORMATION IS AVAILABLE AT MSCUSTOMERCARE.COM

Rechargeable 2.4GHz DX-1 MICRO DRONE

CONTENTS



REMOTE BATTERY INFORMATION

- 1. Slide open battery compartment.
2. Install 2 "AAA" batteries as shown in diagram shown above.
3. Replace and close battery compartment.

LITHIUM-POLYMER BATTERY WARNING
There is a risk of fire and personal injury if a LiPo battery is punctured, damaged or misused.
• Never expose battery to strong impacts.
• Always keep battery away from flammable materials.
• Only use manufacturer specified batteries, chargers, and/or adapters, if applicable, specified by the manufacturer.
• Battery is not serviceable.
• Let battery cool to room temperature before charging.
• While charging, never leave battery unattended.
• Recycle or dispose of battery according to federal, state and local laws.
KEEP THIS INSTRUCTION MANUAL FOR REFERENCE

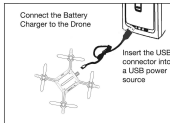
BATTERY WARNING
This is a risk of fire and personal injury if a LiPo battery is punctured, damaged or misused.
• Never expose battery to strong impacts.
• Always keep battery away from flammable materials.
• Only use manufacturer specified batteries, chargers, and/or adapters, if applicable, specified by the manufacturer.
• Battery is not serviceable.
• Let battery cool to room temperature before charging.
• While charging, never leave battery unattended.
• Recycle or dispose of battery according to federal, state and local laws.
KEEP THIS INSTRUCTION MANUAL FOR REFERENCE

Rechargeable 2.4GHz DX-1 MICRO DRONE

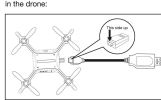
CHARGING BATTERY

Note: The Battery Charger will light up when it is charging the battery and turn off when the battery is fully charged. Charge time is approximately 30 minutes.

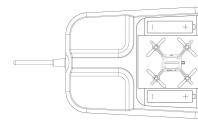
Turn off the drone before charging. Carefully connect the Drone to USB charging cord as the connector. Connector is delicate and must be handled with care. Connect USB connector to power source.



Please note the plug direction when plugging in the drone.



Drone can be charged and stored inside of controller:



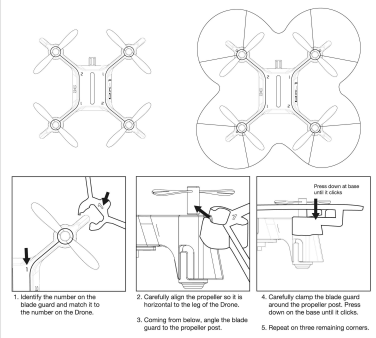
Rechargeable 2.4GHz DX-1 MICRO DRONE

BLADE GUARD INSTALLATION

Blade guards should be installed prior to flying the drone. The blade guards will help protect your drone and bystanders from the spinning propellers. They will protect the propellers if the drone is dropped or has a rough landing. The blade guards will also allow you to see the drone while it is in flight. Please see below on how to properly install the blade guards.

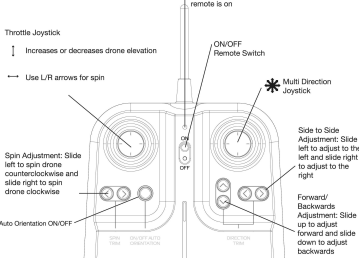
BEFORE INSTALLATION:

AFTER INSTALLATION:

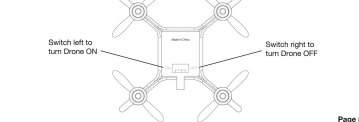


Rechargeable 2.4GHz DX-1 MICRO DRONE

REMOTE CONTROL OVERVIEW



DRONE OVERVIEW



Rechargeable 2.4GHz DX-1 MICRO DRONE

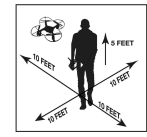
OPERATING DRONE

Step 1 - Pre Flight Checklist

- 1. Read all warnings and instructions
2. Install remote batteries, page 2
3. Make sure that drone and remote are powered off
4. Install Blade Guards, page 4.
5. Charge batteries, page 3.
Step 2 - Choosing a location
• Drone is designed to be flown indoors only
• Always make sure you have enough space to fly drone
• Always follow warnings, page 1

Step 3 - Starting Drone

- 1. Making sure your remote is off, slide drone switch to ON. Drone lights will begin to flicker
2. Choose a flat even surface and follow the diagram
3. Turn remote on. Bring the Throttle all the way up then bring it all the way down. Remote will beep and drone lights will flicker rapidly then turn on permanently once paired.
4. Drone is ready for flight.



Step 4 - Lift Off

- 1. Slowly and carefully bring the throttle up. Propellers will begin to spin and drone will begin to elevate. You can compensate for some of the drone drifting by using the Multi Directional Button or by following step 5. You may need to practice this step several times before successfully getting drone into the air.
Step 5 - Drone Begins to Drift
Follow this step if your drone begins to drift while take off or during flight
• Drone drifts backwards: Slide the Forward/Backwards Adjustment up
• Drone drifts forwards: Slide the Forward/Backwards Adjustment down
• Drone drifts left: Slide the Side to Side Adjustment to the right.
• Drone drifts right: Slide the Side to Side Adjustment to the left.
• Drone spins clockwise (viewing drone from top): Slide the Spin Adjustment to the left.
• Drone spins counter-clockwise (viewing drone from top): Slide the Spin Adjustment to the right.

Always turn off remote prior to retrieving or picking up drone. This will help you avoid accidentally activating propellers.

Step 6 - Operating Drone in Flight

- The drone's range is approximately 100 feet
• Read and be aware of all warnings found on page 1
• Maintain your desired elevation by using the Throttle
• Use the Throttle Joystick in a circle motion to spin the drone
• Use the Multi Directional Joystick to move forwards, backwards, and side to side
• Review step 5 if your drone begins to drift

Rechargeable 2.4GHz DX-1 MICRO DRONE

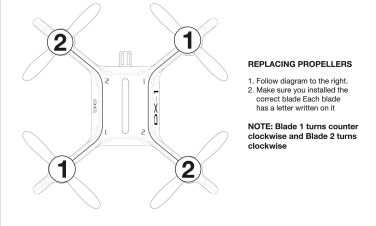
MODES

Auto Landing

- Make sure you have achieved level, balanced flight, where the drone is neither climbing nor descending. This mode will activate when the remote loses signal or when remote is turned off or when battery gets too low. The ideal auto landing height is 10ft orientation mode, whatever the drone spin, the forward orientation will be previous original forward orientation.

Auto Orientation

- Auto Orientation default setting is off. To enter this mode press Auto Orientation button. Remote will beep twice and the LED will light up.
• After drone success paired, the 2 white LED lights toward orientation will be the original forward orientation, when drone is in auto orientation mode, whatever the drone spin, the forward orientation will be previous original forward orientation.
• Remote will beep every 8s to indicate the drone is in Auto Orientation mode.
• To exit mode, press the button again, the LED will light off. Remote will sound 1 long beep indicating that it has exited Auto Orientation mode.



REPLACING PROPELLERS

- 1. Follow diagram to the right.
2. Make sure you installed the correct blade. Each blade has a letter written on it.
NOTE: Blade 1 turns counter clockwise and Blade 2 turns clockwise

Rechargeable 2.4GHz DX-1 MICRO DRONE

CUSTOMER SERVICE (800) 374-2744

TIPS

- Do not crash drone into land or into. Drone gets into damage charged
• When first learning to fly, practice flying off and hovering
• They avoid flat from walls and buildings.
• Always Press Throttle all the way down after crashing or when controlling gets stuck in propeller
• Never fly drone above or near people, sudden changes in wind or other conditions could lead to unexpected crashes.
• Always use caution when flying drone vehicles, obey relevant laws, respect the privacy and property rights of others.
• The drone shall never be modified or used for anything except its intended purpose.

Warnings: Changes or modifications to this and not expressly approved by the party responsible for compliance could void the user's authority to operate the equipment.

TROUBLESHOOTING

When remote switches turned on, the remote light does not illuminate

- 1. Check that batteries in the remote are installed correctly OR
2. Replace with new batteries.

When the remote is switched on, the remote LED is flashing and remote is beeping

- 1. Replace batteries as low, replace them with new batteries

Drone will not respond properly, your drone will not fly or spin

- 1. Drone LiPo needs charging. Use charging cable to connect the drone to power source.

After turning the drone, the drone light is very unstable and cannot fly properly

- 1. One or more blades are not fully damaged.
2. Turn off the drone and remote.
3. Replace with the proper number replacement blade and by flying again.

After impact, the drone is unstable

- 1. If the left remote cannot lower to the full bottom and put the right remote control lever to the right bottom at the same time which connected to the drone (diagram to right).
2. If the above does not repair the issue, report the drone and controller and get again.

Remote Controller and Drone can not be paired

- 1. Check Throttle Remote Controller must be closed to Drone, not exceed 1 meter.

Note: If there are 2 sets of Drones within 4 meters for Pairing, you must pair one successfully before pairing the second set.

