



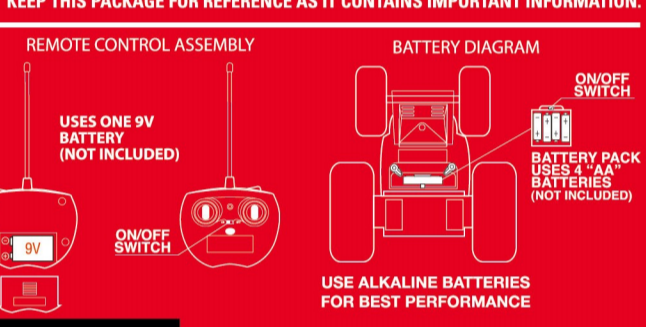
SPINNING STUNT VEHICLE WITH LED LIGHTS

radio controlled 360° rally car
thunder tumbler®

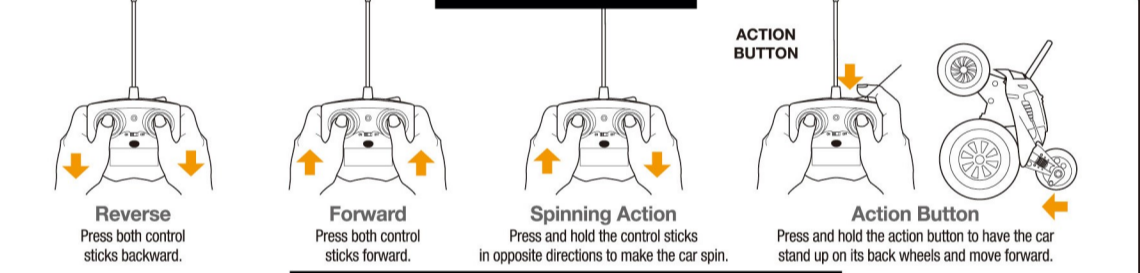
OPERATING INSTRUCTIONS

- Operation requires 4 "AA" 1.5V alkaline batteries (not included) for car and one 9V battery (not included) for remote control.
1. Carefully remove items from package.
 2. Locate the battery compartment on the back of each item (see diagram on right).
 3. Swivel latches on bottom of car to release battery pack and insert batteries.
 4. Switch both car and remote buttons to "ON" position.
 5. For best result use this car on hard surfaces such as wood or tile.

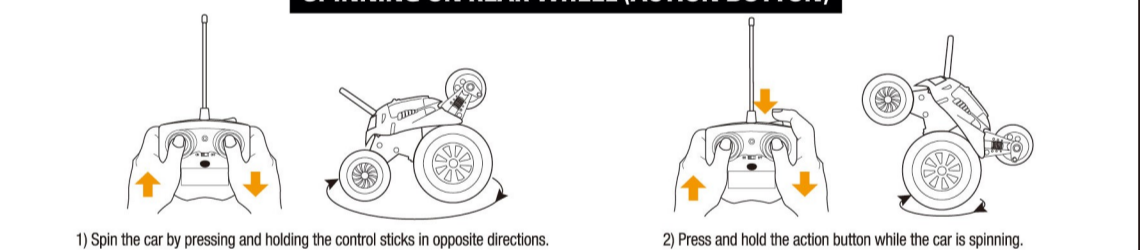
KEEP THIS PACKAGE FOR REFERENCE AS IT CONTAINS IMPORTANT INFORMATION.



GENERAL CONTROLS



SPINNING ON REAR WHEEL (ACTION BUTTON)



SAFETY PRECAUTIONS

- Never operate during inclement weather.
- Avoid water, sand and snow when operating car.
- Never operate your car on the street or highway.
- Do not operate your car in a confined or crowded area, and do not use people or animals as obstacles.
- Do not use your car on stairs, curbs, objects or hard surfaces, as this will cause damage to both the vehicle and the car.
- Keep fingers, feet and lower clothing away from the tires, gears and motor while the car is running.
- Do not touch car or transmitter near sources of heat or under direct sunlight for long periods of time.
- Do not touch car or transmitter outside overnight. Darkness is harmful to components.
- Remove all batteries when not in use to avoid accidental operation.
- Most equipment is recommended when operating this car.

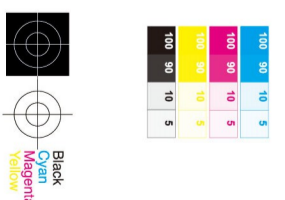
BATTERY WARNINGS

- Do not use alkaline, rechargeable or lead acid batteries.
- Insert batteries into the car and remote control in the correct orientation.
- Always use the correct size and type of battery as specified in the product manual.
- Do not short-circuit the battery terminals or allow them to touch each other.
- Do not dispose of batteries in fire or water.
- Do not touch the battery terminals or allow them to touch each other.
- Do not touch the battery terminals or allow them to touch each other.
- Do not touch the battery terminals or allow them to touch each other.
- Do not touch the battery terminals or allow them to touch each other.
- Do not touch the battery terminals or allow them to touch each other.



©2018 MegaBlox, LLC. The Black Series and 360 are trademarks of MegaBlox, LLC. All rights reserved. Operated by MegaBlox, LLC, Irvine, CA 92618. China Patent No. ZL201220022681.1. For technical support, please visit www.megablox.com or call 1-800-571-2174. The above information is provided for informational purposes only. It is not intended to constitute an offer of any financial product or service. Please consult your financial advisor for more information. "Real LED Lights" is a registered trademark of MegaBlox, LLC. All other trademarks are the property of their respective owners.

7.68" H x 9.35" W x 7.32" D
19.5 cm H x 23.75 cm W x 18.6 cm D



radio controlled 360° rally car
thunder tumbler®

stunts, wheelies & LED lights!



BOX CONTAINS THE FOLLOWING FREQUENCIES:
 27 MHz
 49 MHz

WARNING!
BATTERY OPERATED PLAY VEHICLE
AGES 8 AND UP

THE BLACK SERIES
radio controlled 360° rally car
thunder tumbler®



THE BLACK SERIES
radio controlled 360° rally car
thunder tumbler®

antenna provides wireless control

LED lights



Knobby grip tires for jumps and stunts



360° WHEELIES

WIRELESS REMOTE CONTROL FOR FULLY FUNCTIONAL RACING ACTION

COMPETITIVE AVAILABLE IN 2 FREQUENCIES FOR TWO PERSON PLAY

VERSATILE EASILY PERFORMS STUNTS AND WHEELIES

THE BLACK SERIES
radio controlled 360° rally car
thunder tumbler®

360° WHEELIES



For registered "TM" Trademark information, see bottom panel for registered trademark information. ©2018 MegaBlox, LLC.