



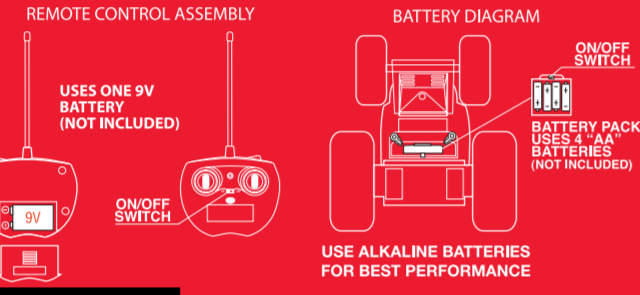
SPINNING STUNT VEHICLE WITH LED LIGHTS

radio controlled 360° rally car thunder tumbler®

OPERATING INSTRUCTIONS

- Operation requires 4 "AA" 1.5V alkaline batteries (not included) for car and one 9V battery (not included) for remote control.
1. Carefully remove items from package.
 2. Locate the battery compartment on the back of each item (see diagram on right).
 3. Swivel latches on bottom of car to release battery pack and insert batteries.
 4. Switch both car and remote buttons to "ON" position.
 5. For best result use the car on hard surfaces such as wood or tile.

KEEP THIS PACKAGE FOR REFERENCE AS IT CONTAINS IMPORTANT INFORMATION.

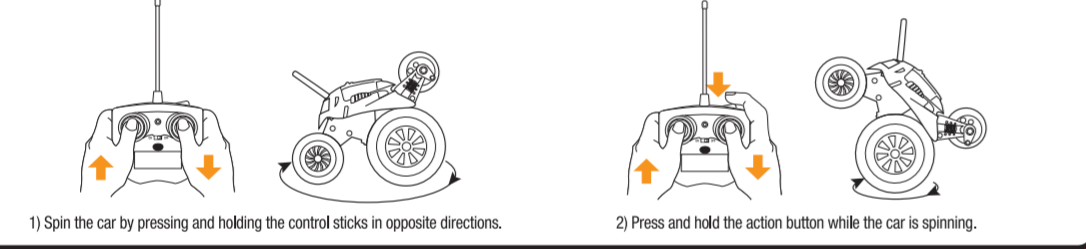


USE ALKALINE BATTERIES FOR BEST PERFORMANCE

GENERAL CONTROLS



SPINNING ON REAR WHEEL (ACTION BUTTON)



SAFETY PRECAUTIONS

- Do not operate during thunderstorms or rain.
- Never operate near or over any swimming pool.
- Do not submerge car or controller in water.
- Never operate your car on the street or highway.
- Never operate your car in a confined or crowded area, and do not use people or animals as obstacles.
- Do not run your car into furniture, objects or hard surfaces, as this will cause damage to both the car and the car.
- Keep fingers, feet and loose clothing away from the tires, gears and motor while the car is switched to "ON".
- Do not leave car or transmitter near sources of heat or under direct sunlight for long periods of time.
- Do not leave car or transmitter outside overnight. Damage is harmful to motor components.
- Remove all batteries when not in use to avoid accidental operation.
- Adult supervision is recommended when operating this car.

BATTERY WARNING

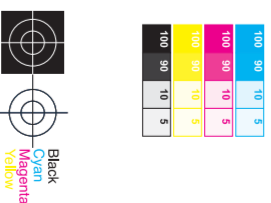
- Do not use alkaline, carbon/zinc or any other quality non-rechargeable batteries.
- Recharge or replace the batteries as soon as the equipment lights dim.
- Insert the batteries in the correct polarity as shown on the equipment.
- Do not mix different brands, types, capacities or sizes of batteries in any one device.
- Do not use rechargeable batteries in this equipment unless specifically labeled "rechargeable".
- Do not use damaged, old, or recalled batteries.
- Do not use batteries that are not fully charged.
- Do not use batteries that are not fully charged.
- Do not use batteries that are not fully charged.

1647807 (XXXXXX)

SAMPLE

Made in China

©2015 Mattel Inc. The Black Series, Thunder Tumbler and all associated logos are trademarks of Mattel Inc. All rights reserved. Distributed by Mattel Inc., 4900 S. Bascom Ave., San Jose, CA 95128. China Patent No. 32,073,225B/1 For technical support, please visit www.mattel.com or call 1-800-274-1214. Mattel Inc. is not responsible for any damage or injury caused by the use of the equipment. Please use common sense and follow the instructions. If you are unable to solve a problem, please contact your local retailer. If you are unable to solve a problem, please contact your local retailer.



radio controlled 360° rally car thunder tumbler®

stunts, wheelies & LED lights!



BOX CONTAINS THE FOLLOWING FREQUENCY:

27 MHz

49 MHz

BATTERY OPERATED PLAY VEHICLE PARTS STAY AND UP

WARNING!

CHOKING HAZARD - Small parts. Not for children under 3 years.

THE BLACK SERIES

radio controlled 360° rally car thunder tumbler®



knobby grip tires for jumps and stunts



radio controlled 360° rally car thunder tumbler®

360° WHEELIES

WIRELESS REMOTE CONTROL FOR FULLY FUNCTIONAL RACING ACTION

COMPETITIVE AVAILABLE IN 2 FREQUENCIES FOR TWO PERSON PLAY

VERSATILE EASILY PERFORMS STUNTS AND WHEELIES

For registration in CA, TX, WA, please contact the retailer. See bottom panel for additional safety information. Colors are subject to change.

THE BLACK SERIES

radio controlled 360° rally car thunder tumbler®

360° WHEELIES

