

FCC TEST REPORT

FCC ID: Z52NAS-WS01Z

Product : Water sensor

Model Name : NAS-WS01Z

Brand : NEO Coolcam

Report No. : P800110160112E-FC01

Prepared for

SHENZHEN NEO ELECTRONICS CO.,LTD
East6/F Building 2,Laobing industry,Baoan District,
Shenzhen, China

Prepared by

DongGuan Precise Testing Service Co.,Ltd.
Building D, Baoding Technology Park, Guangming Road 2, Guangming Community
Dongcheng District, Dongguan, Guangdong, China



TEST RESULT CERTIFICATION

Applicant's name : SHENZHEN NEO ELECTRONICS CO.,LTD
Address : East6/F Building 2,Laobing industry,Baoan District,Shenzhen,China
Manufacture's name : SHENZHEN NEO ELECTRONICS CO.,LTD
Address : East6/F Building 2,Laobing industry,Baoan District,Shenzhen,China
Product name : Water sensor
Model name : NAS-WS01Z
Standards : FCC CFR47 Part 15 Section 15.249
Test procedure : ANSI C63.10:2013
Test Date : Jan. 14, 2016- Jan. 26, 2016
Date of Issue : Jan. 27, 2016
Test Result : Pass

This device described above has been tested by PTS, and the test results show that the equipment under test (EUT) is in compliance with the FCC requirements. And it is applicable only to the tested sample identified in the report.

This report shall not be reproduced except in full, without the written approval of PTS, this document may be altered or revised by PTS, personal only, and shall be noted in the revision of the document.

Testing Engineer

August Qiu

Technical Manager

Hack Ye

Authorized Signatory

Chris Du



Contents

	Page
2 TEST SUMMARY.....	4
3 GENERAL INFORMATION.....	5
3.1 GENERAL DESCRIPTION OF E.U.T.....	5
3.2 TEST MODE.....	5
4 EQUIPMENT DURING TEST	6
4.1 EQUIPMENTS LIST.....	6
4.2 MEASUREMENT UNCERTAINTY.....	6
5 CONDUCTED EMISSION.....	7
6 DUTY CYCLE	8
7 RADIATED SPURIOUS EMISSIONS	9
7.1 EUT OPERATION	9
7.2 TEST SETUP.....	10
7.3 SPECTRUM ANALYZER SETUP.....	11
7.4 TEST PROCEDURE.....	12
7.5 SUMMARY OF TEST RESULTS.....	13
8 OUTSIDE OF BAND EMISSION	15
8.1 TEST PROCEDURE.....	15
9 20DB BANDWIDTH MEASUREMENT.....	16
9.1 TEST PROCEDURE.....	16
9.2 TEST RESULT.....	16
10 ANTENNA REQUIREMENT	17
11 TEST SETUP.....	18
12 EUT PHOTOS.....	19



2 Test Summary

Test Items	Test Requirement	Result
Conducted Emissions	15.207	N/A
Radiated Emission	15.249(a) 15.209 15.205(a)	PASS
Duty Cycle	15.35(c)	PASS
Outside of Band Emission	15.249 15.205 15.209	PASS
20dB Bandwidth	15:215(c)	PASS
Antenna Requirement	15.203	PASS

Remark:

N/A: Not Applicable



3 General Information

3.1 General Description of E.U.T.

- Product Name : Water sensor
- Model Name : NAS-WS01Z
- Model Description : N/A
- Operation Frequency: : 908.42MHz
- Antenna installation: : Integrated Antenna
- Antenna Gain: : 0dBi
- Type of Modulation : FSK
- The lowest oscillator : 32MHz
- Power supply : DC 3V power by battery

3.2 Test Mode

All test mode(s) and condition(s) mentioned were considered and evaluated respectively by performing full tests, the worst data were recorded and reported.

Modulation	Test mode	Low channel	Middle channel	High channel
FSK	continuously Transmitting	908.42MHz	\	\



4 Equipment During Test

4.1 Equipments List

Radiated Emissions							
Item	Kind of Equipment	Manufacturer	Type No.	Serial No.	Last calibration	Calibrated until	Calibration period
1	EMI Test Receiver	Rohde & Schwarz	ESCI	101417	July 15, 2015	July 14, 2016	1 year
2	EMC Analyzer (9k~26.5GHz)	Agilent	E4407B	MY45109572	Aug.04, 2015	Aug.03, 2016	1 year
3	Trilog Broadband Antenna	SCHWARZECK	VULB9160	9160-3355	July 15, 2015	July 14, 2016	1 year
4	Amplifier	EM	EM-30180	060538	July 15, 2015	July 14, 2016	1 year
5	Horn Antenna	SCHWARZECK	BBHA9120D	9120D-1246	July 15, 2015	July 14, 2016	1 year
6	Coaxial Cable(below 1GHz)	LARGE	CALB1	-	July 15, 2015	July 14, 2016	1 year
7	Coaxial Cable(above 1GHz)	LARGE	CALB2	-	July 15, 2015	July 14, 2016	1 year

4.2 Measurement Uncertainty

Parameter	Uncertainty
RF output power, conducted	±1.0dB
Power Spectral Density, conducted	±2.2dB
Radio Frequency	± 1 x 10 ⁻⁶
Bandwidth	± 1.5 x 10 ⁻⁶
Time	±2%
Duty Cycle	±2%
Temperature	±1°C
Humidity	±5%
DC and low frequency voltages	±3%
Conducted Emissions (150kHz~30MHz)	±3.64dB
Radiated Emission(30MHz~1GHz)	±5.03dB
Radiated Emission(1GHz~25GHz)	±4.74dB



5 Conducted Emission

- Test Requirement: : FCC CFR 47 Part 15 Section 15.207
- Test Method: : ANSI C63.10:2013
- Frequency Range: : 150kHz to 30MHz
- Class/Severity: : Class B
- Limit: : 66-56 dB μ V between 0.15MHz & 0.5MHz
: 56 dB μ V between 0.5MHz & 5MHz
: 60 dB μ V between 5MHz & 30MHz
- Detector: : Peak for pre-scan (9kHz Resolution Bandwidth)
- Test Result: : The device is powered by battery, this test is not applicable

6 Duty Cycle

The duty cycle was determined by the following equation:

To calculate the actual field intensity, the duty cycle correction factor in decibel is needed for later use and can be obtained from following conversion

Duty Cycle(%)=Total On interval in a complete pulse train/ Length of a complete pulse train * %

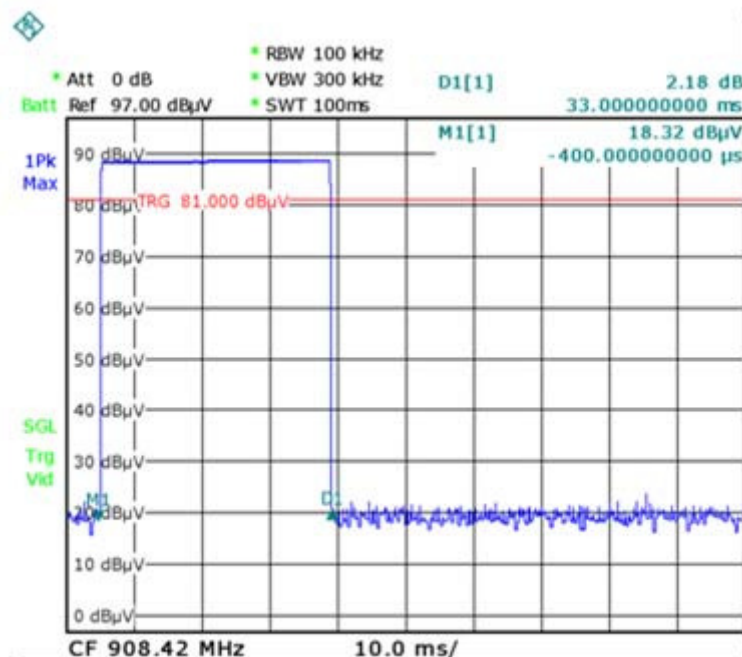
Duty Cycle Correction Factor (dB)=20 * Log₁₀(Duty Cycle(%))

Total transmission time(ms)	100.00
Length of a complete transmission period(ms)	33.00
Duty Cycle(%)	33.00
Duty Cycle Correction Factor(dB)	-9.63

Refer to the duty cycle plot (as below),This device meets the FCC requirement.

Length of a complete pulse train:

Remark: FCC part15.35(c) required that a complete pulse train is more than 0.1 seconds, the measured field strength shall be determined from the average absolute voltage during a 0.1 second interval during which the field strength is at its maximum value.





7 Radiated Spurious Emissions

Test Requirement: : FCC CFR47 Part 15 Section 15.249 & 15.207 & 15.205
 Test Method: : ANSI C63.10:2013
 Test Result: : PASS
 Measurement Distance: : 3m
 Limit: : See the follow table

Frequency (MHz)	Field Strength		Field Strength Limit at 3m Measurement Dist	
	uV/m	Distance (m)	uV/m	dBuV/m
0.009 ~ 0.490	2400/F(kHz)	300	10000 * 2400/F(kHz)	20log ^{(2400/F(kHz))} + 80
0.490 ~ 1.705	24000/F(kHz)	30	100 * 24000/F(kHz)	20log ^{(24000/F(kHz))} + 40
1.705 ~ 30	30	30	100 * 30	20log ⁽³⁰⁾ + 40
30 ~ 88	100	3	100	20log ⁽¹⁰⁰⁾
88 ~ 216	150	3	150	20log ⁽¹⁵⁰⁾
216 ~ 960	200	3	200	20log ⁽²⁰⁰⁾
Above 960	500	3	500	20log ⁽⁵⁰⁰⁾

7.1 EUT Operation

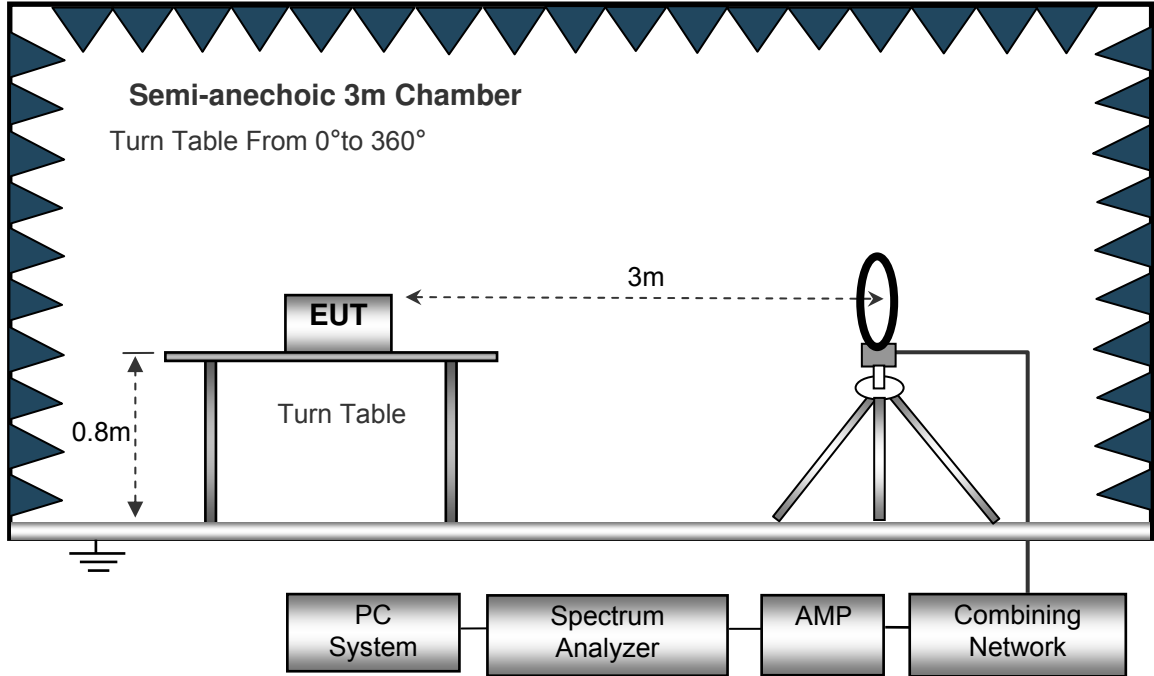
Operating Environment :

Temperature: : 23.5 °C
 Humidity: : 51.1 % RH
 Atmospheric Pressure: : 101.2kPa
 EUT Operation : : Refer to section 3.3

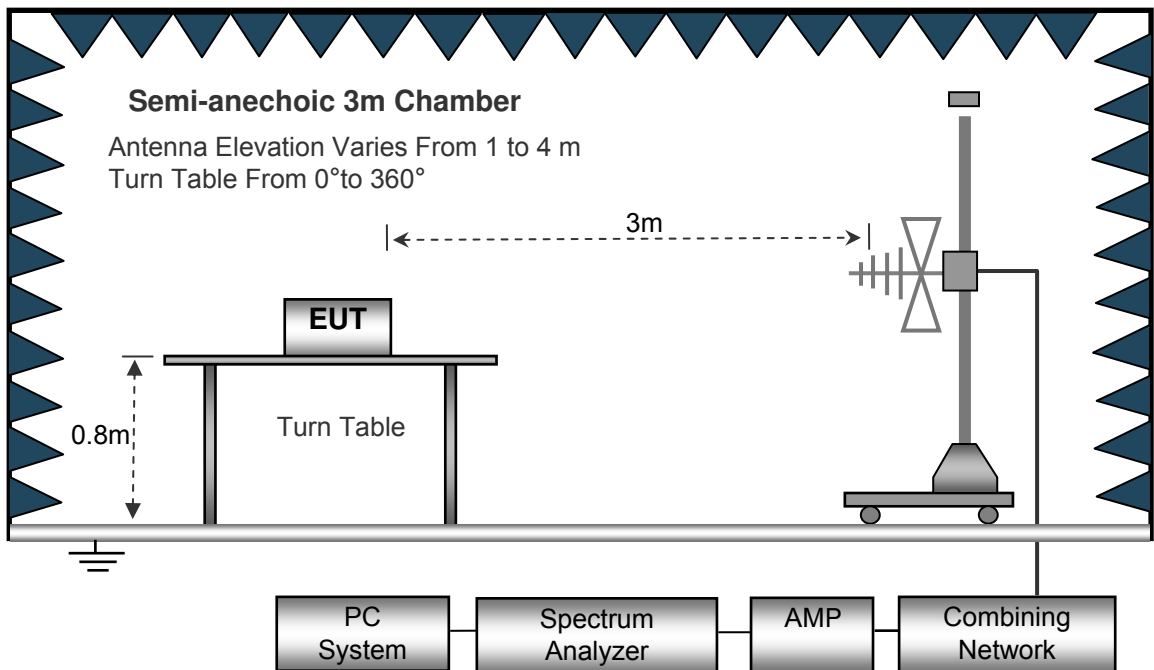
7.2 Test Setup

The radiated emission tests were performed in the 3m Semi- Anechoic Chamber test site

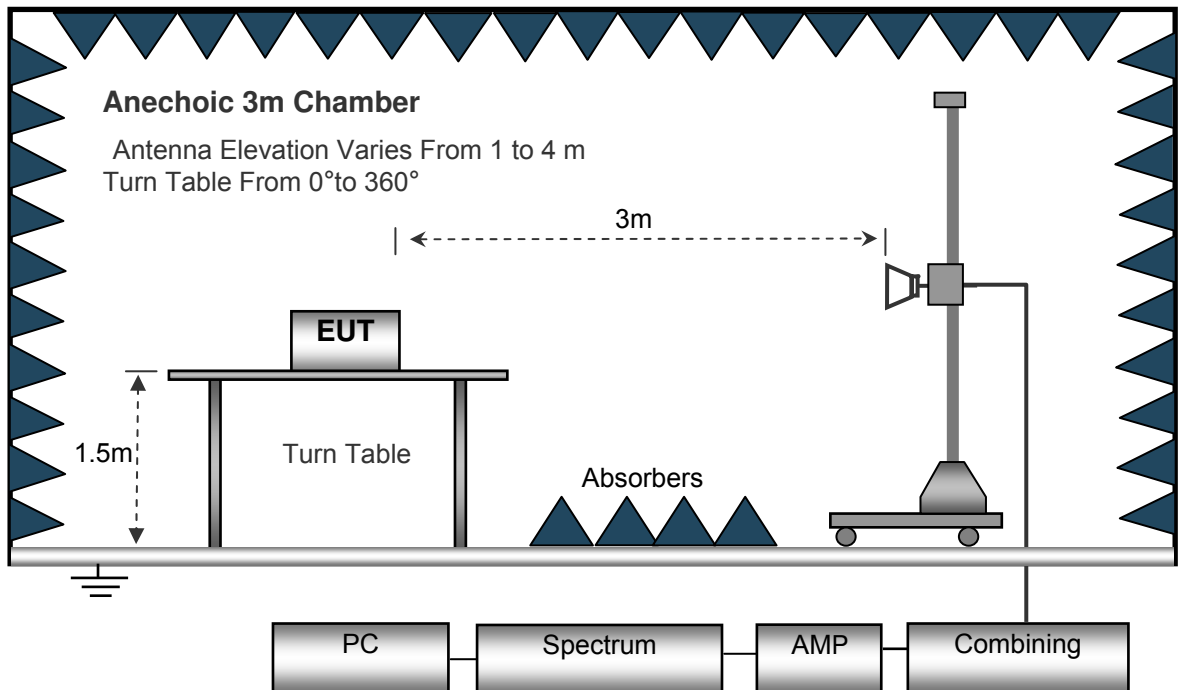
The test setup for emission measurement below 30MHz.



The test setup for emission measurement from 30 MHz to 1 GHz.



The test setup for emission measurement above 1 GHz.



7.3 Spectrum Analyzer Setup

Below 30MHz

IF Bandwidth	10kHz
Resolution Bandwidth	10kHz
Video Bandwidth	10kHz

30MHz ~ 1GHz

Detector	: PK
Resolution Bandwidth	: 100kHz
Video Bandwidth	: 300kHz
Detector	: QP
Resolution Bandwidth	: 120kHz
Video Bandwidth	: 300kHz

Above 1GHz

Detector	: PK
Resolution Bandwidth	: 1MHz
Video Bandwidth	: 3MHz



7.4 Test Procedure

1. The EUT is placed on a turntable, which is 0.8m or 1.5m above ground plane.
2. The turntable shall be rotated for 360 degrees to determine the position of maximum emission level.
3. EUT is set 3m away from the receiving antenna, which is moved from 1m to 4m to find out the maximum emissions. The spectrum was investigated from the lowest radio frequency signal generated in the device, without going below 9 kHz, up to the tenth harmonic of the highest fundamental frequency or to 40 GHz, whichever is lower.
4. Maximum procedure was performed on the six highest emissions to ensure EUT compliance.
5. And also, each emission was to be maximized by changing the polarization of receiving antenna both horizontal and vertical.
6. Repeat above procedures until the measurements for all frequencies are complete.
7. The radiation measurements are tested under 3-axes(X,Y,Z) position(X denotes lying on the table, Y denotes side stand and Z denotes vertical stand), After pre-test, It was found that the worse radiation emission was get at the X position. So the data shown was the X position only.



7.5 Summary of Test Results

Test Frequency: Below 30MHz

The lowest oscillator is 32MHz, the test is not applicable

Test Frequency: 30MHz ~ 18GHz

Frequency	Reading	Detector	Turn table Angle	RX Antenna		Corrected Factor	Corrected Amplitude	FCC Part 15.249/209/205	
				Height	Polar			Limit	Margin
(MHz)	(dBµV)	(PK/QP/Av e)	Degree	(m)	(H/V)	(dB/m)	(dBµV/m)	(dBµV/m)	(dB)
307.54	47.14	QP	35	2.2	H	-16.45	30.69	46	-15.31
307.54	41.63	QP	340	1.4	V	-16.45	25.18	46	-20.82
908.42	88.61	QP	294	2.0	H	-5.21	83.40	94	-10.60
908.42	84.64	QP	178	1.9	V	-5.21	79.43	94	-14.57
1816.84	67.00	PK	248	1.7	H	-12.11	54.89	74	-19.11
1816.84	57.81	PK	193	1.6	V	-12.11	45.70	74	-28.30
2725.26	58.51	PK	265	1.0	H	-11.88	46.63	74	-27.37
2725.26	56.17	PK	231	1.1	V	-11.88	44.29	74	-29.71
3633.68	57.45	PK	33	1.1	H	-8.17	49.28	74	-24.72
3633.68	56.75	PK	19	1.3	V	-8.17	48.58	74	-25.42



Frequency	PK	Turn table Angle	RX Antenna		Duty cycle Factor	AV	FCC Part 15.249/209/205	
			Height	Polar			Limit	Margin
(MHz)	(dB μ V/m)	Degree	(m)	(H/V)	(dB)	(dB μ V/m)	(dB)	
1816.84	54.89	294	1.7	H	-9.63	45.26	54	-8.74
1816.84	45.70	178	1.6	V	-9.63	36.07	54	-17.93
2725.26	46.63	248	1.0	H	-9.63	37.00	54	-17.00
2725.26	44.29	193	1.1	V	-9.63	34.66	54	-19.34
3633.68	49.28	265	1.1	H	-9.63	39.65	54	-14.35
3633.68	48.58	231	1.3	V	-9.63	38.95	54	-15.05



8 Outside of Band Emission

- Test Requirement : 15.249(d):Emissions radiated outside of the specified frequency bands, except for harmonics, shall be attenuated by at least 50 dB below the level of the fundamental or to the general radiated emission limits in §15.209, whichever is the lesser attenuation.
- Test Method : ANSI C63.10:2013
- Test Limit : 50 dB below the level of the fundamental or to the general radiated emission limits
- Test Mode : Refer to section 3.3

8.1 Test Procedure

1. Remove the antenna from the EUT and then connect a low RF cable from the antenna port to the spectrum;
2. Set the spectrum analyzer: RBW = 100kHz, VBW = 300kHz, Sweep = auto

Detector function = peak, Trace = max hold

Frequency	Reading	Detector	Turn table Angle	RX Antenna		Corrected Factor	Corrected Amplitude	FCC Part 15.249/209/205	
				Height	Polar			Limit	Margin
(MHz)	(dBµV)	(PK/QP/Av e)	Degree	(m)	(H/V)	(dB/m)	(dBµV/m)	(dBµV/m)	(dB)
899.31	39.92	QP	72	1.9	H	-5.69	34.23	46	-11.77
929.57	34.43	QP	58	2.1	V	-5.07	29.36	46	-16.64



9 20dB Bandwidth Measurement

Test Requirement : FCC CFR47 Part 15 Section 15.249
 Test Method : ANSI C63.10:2013
 Test Mode : Refer to section 3.3

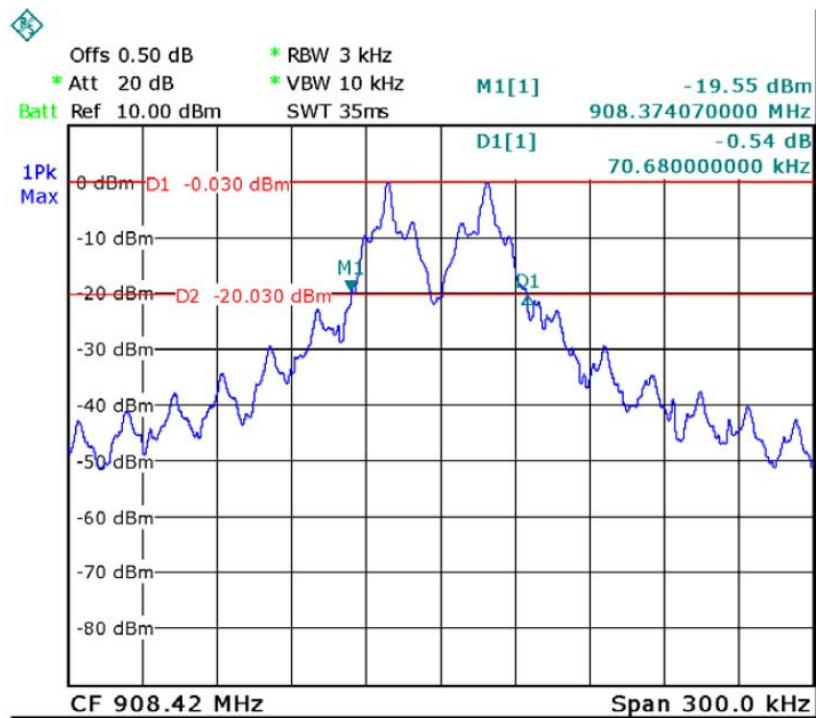
9.1 Test Procedure

1. Remove the antenna from the EUT and then connect a low RF cable from the antenna port to the spectrum;
2. Set the spectrum analyzer: For BLE, RBW = 3 kHz, VBW = 10kHz,

9.2 Test Result

Test Frequency	Bandwidth
908.42MHz	70.68kHz

Test plots





10 Antenna Requirement

According to the FCC part15.203, a transmitter can only be sold or operated with antennas with which it was approved. This product has an internal permanent antenna which meet the requirement of this section.

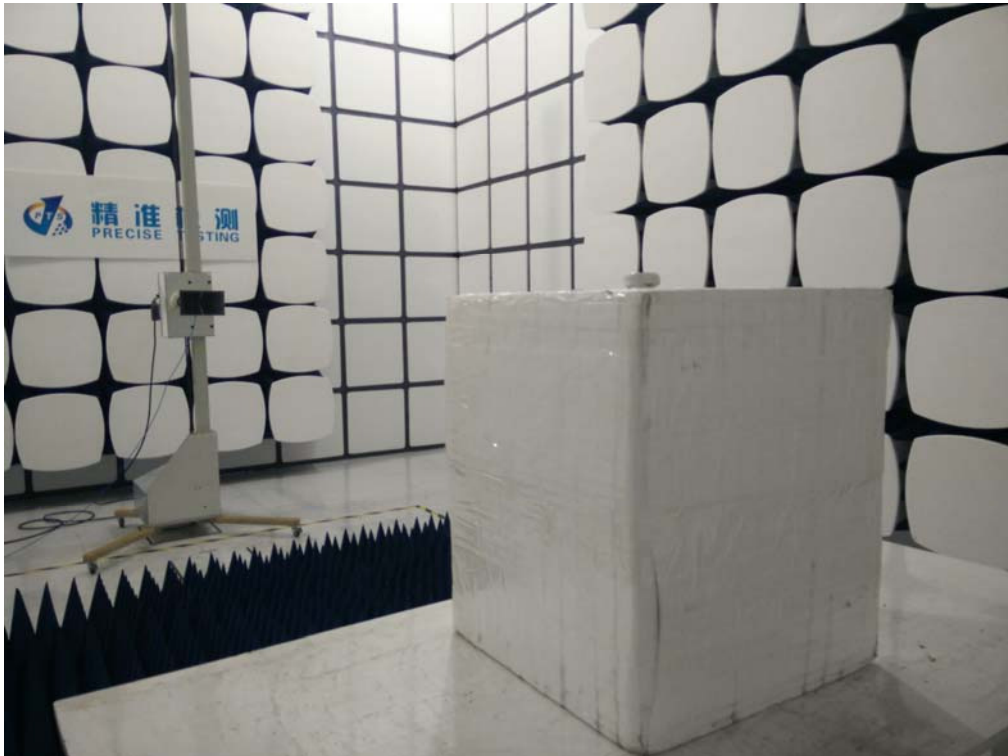


11 Test Setup

Radiated Spurious Emissions From 30MHz-1000MHz



Above 1GHz



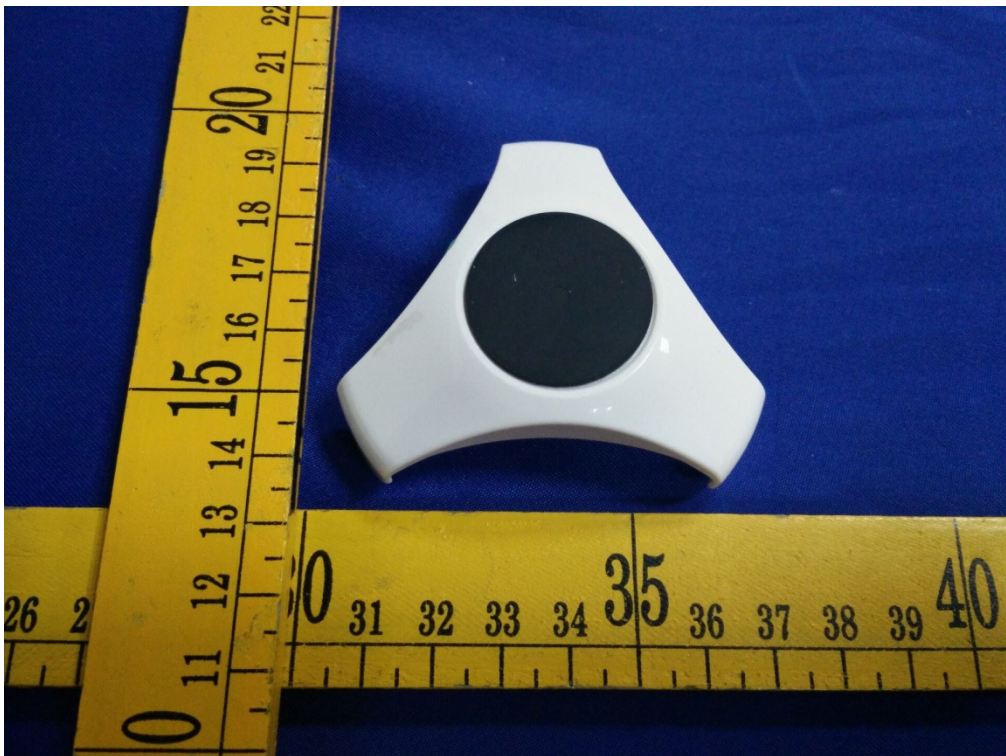


12 EUT Photos

External Photos

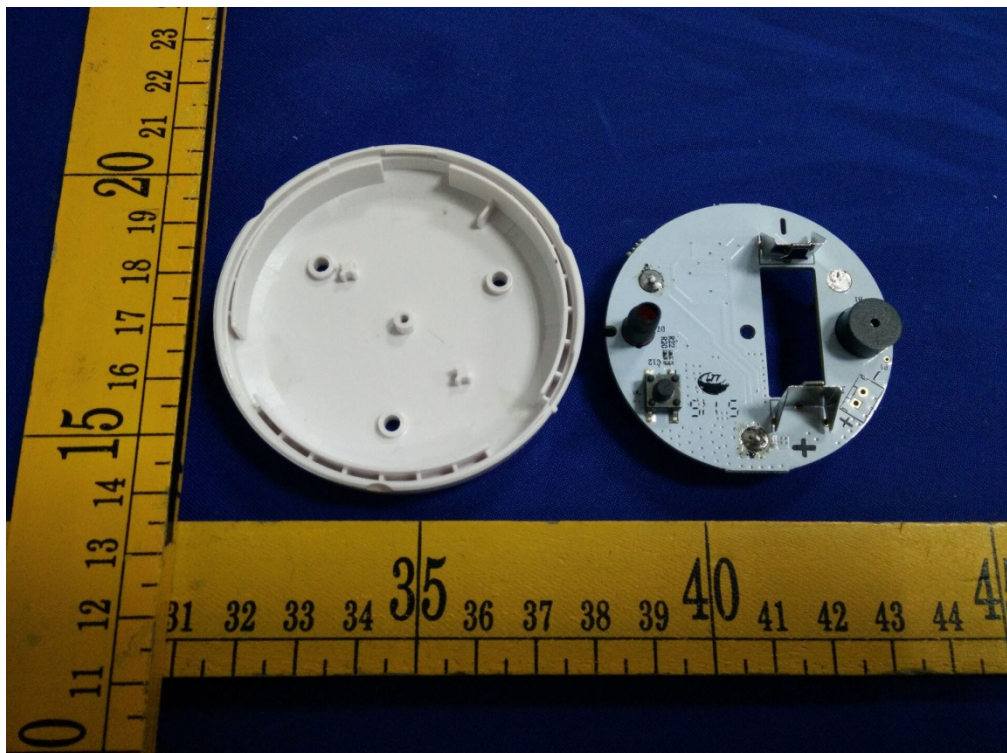


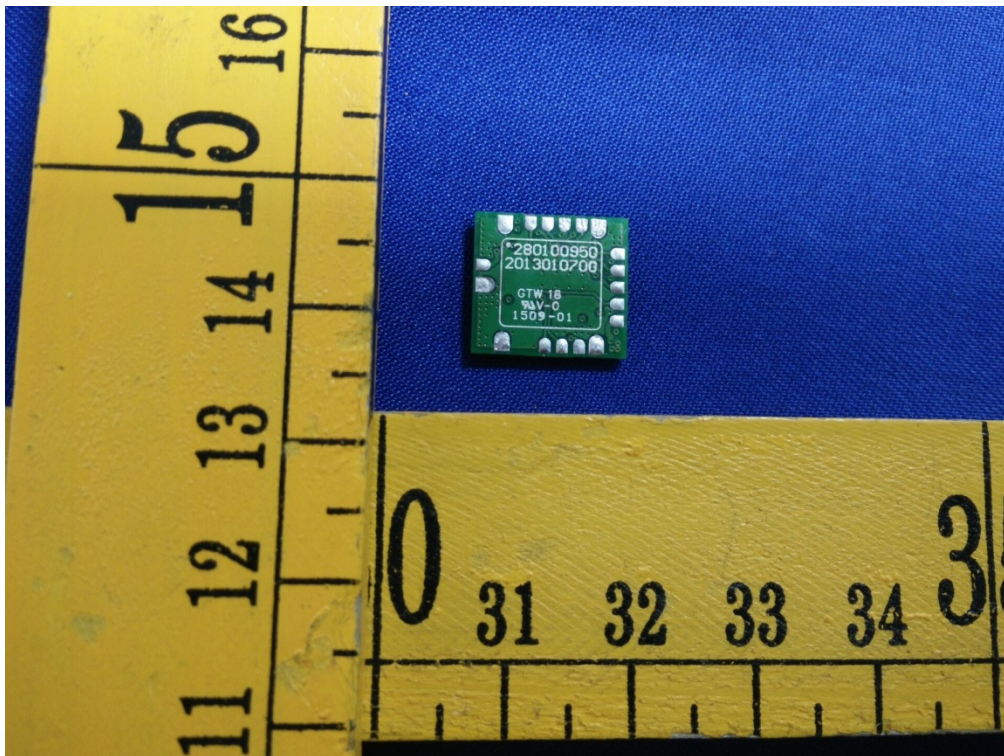
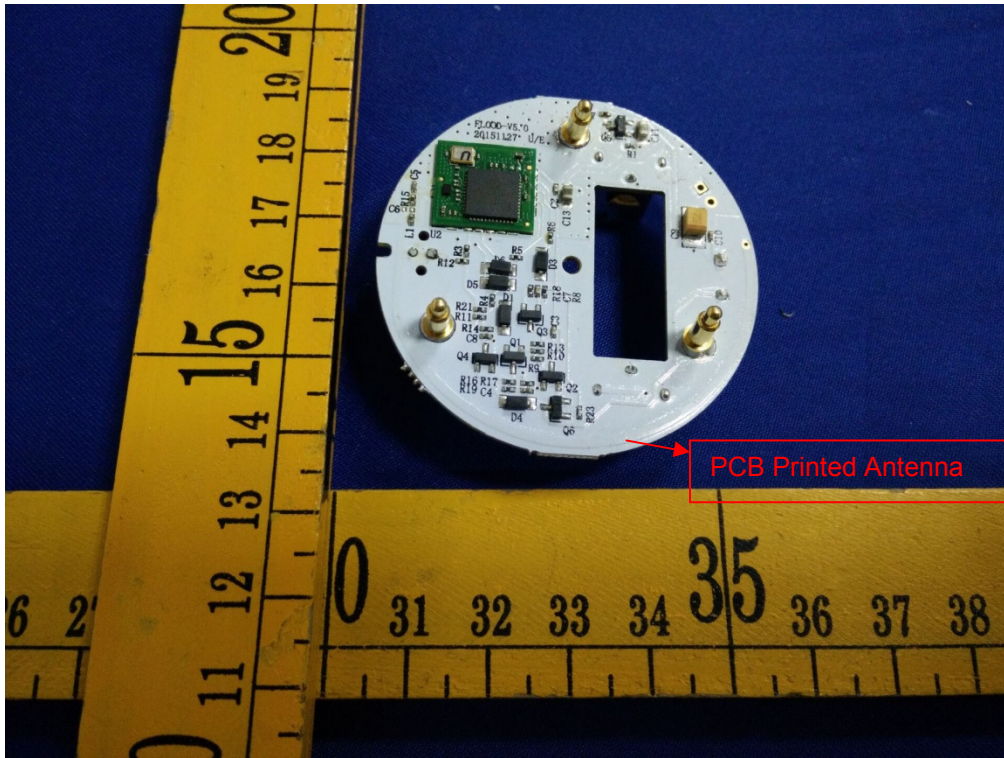


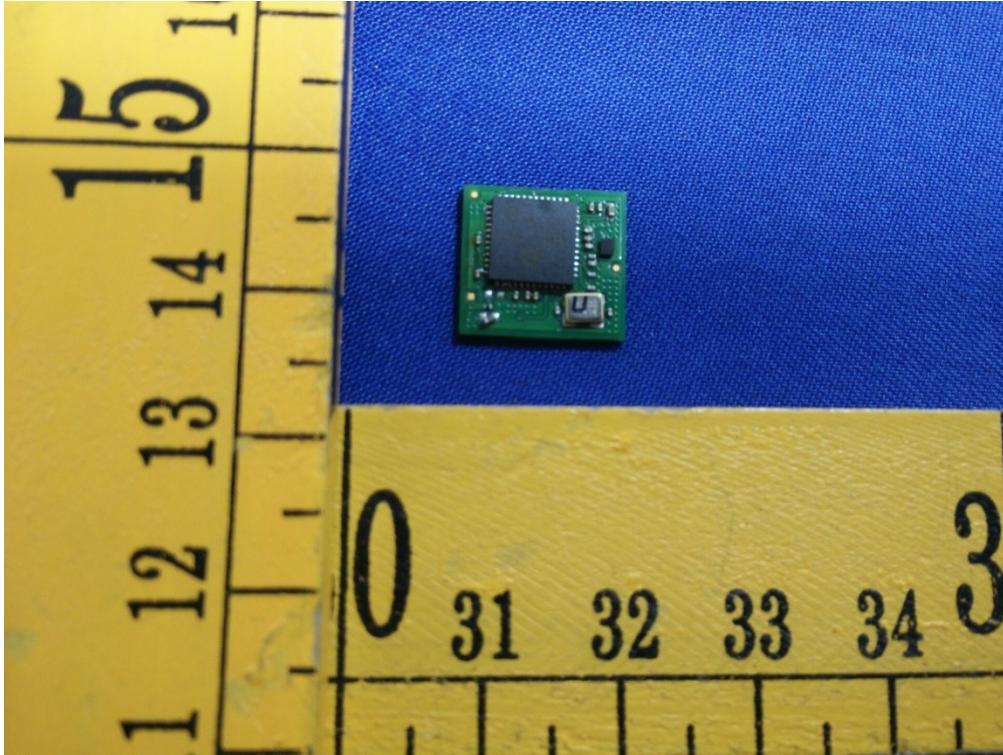




Internal Photos







***** THE END REPORT*****