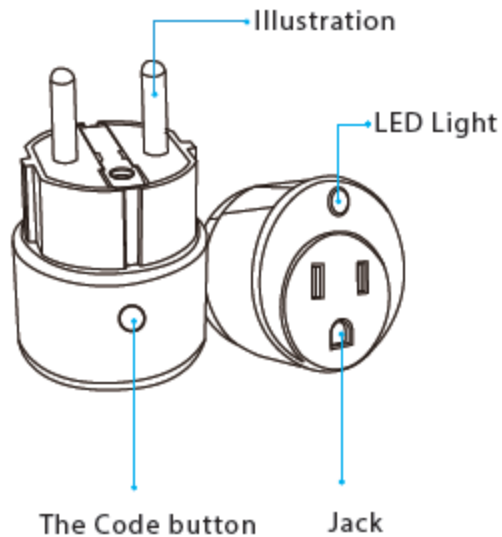


Product configuration



Main function

1. Remote control on/off
2. Countdown
3. Timer

Specification

Rated Voltage: AC 85-230V $\pm 10\%$, 50/60Hz

Rated Current:10A(EU) / 15A(US)

Wireless Type:2.4GHz, 1T1R

Protocol:IEEE 802.11b/g/n

Wireless Range: 45m

Operating Temperature:0°C ~ 40°C (32° F ~ 104° F)

Operating Humidity: 20% ~ 85%

Storage Temperature:0°C ~ 60°C (32° F ~ 140° F)

Storage Humidity:0% ~ 90%

Material:PC(V0)

Size: EU 65mm x 43mm x 43mm

US 43mm x 43mm x 50mm

Plug type:US, EU, UK, AU optiona

Support: Amazom alexa、google Assistant、IFTTT



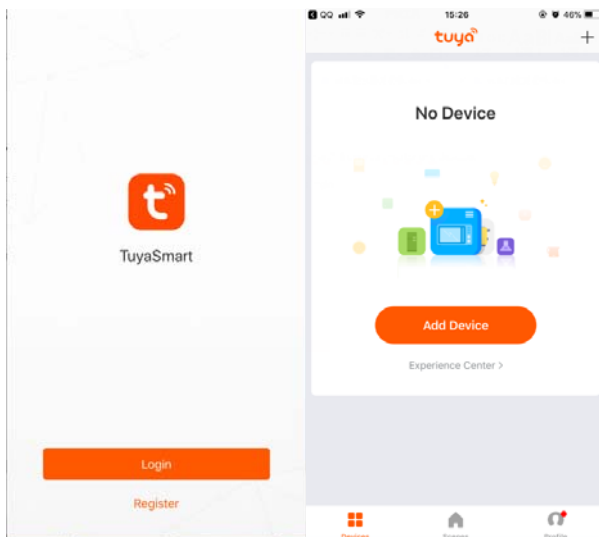
App download

1. Android phone: download “TuyaSmart” from GooglePlay.
2. Iphone :download “TuyaSmart” from App Store.

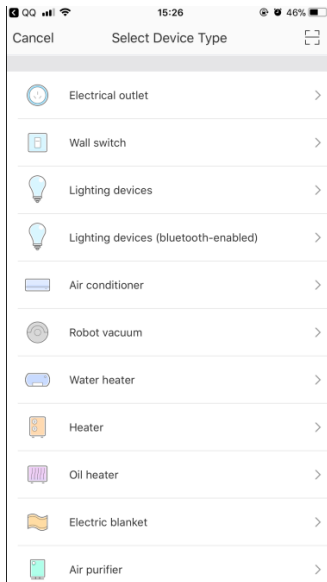


Add Device

1. Run “TuyaSmart” from you smartphone desktop.
2. Register and login



3. Click the “Add Device” Choose the device that you want to add.



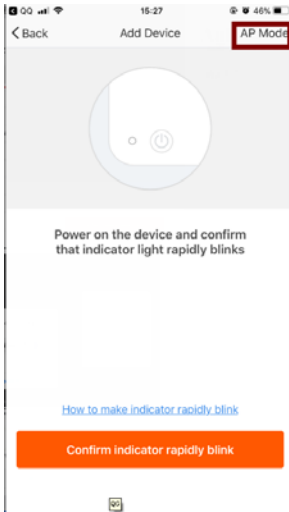
Smart Wi-Fi

1. Press and hold the reset button for 6s, the indicator will blink rapidly. The device is in smart Wi-Fi mode .
2. Click “Confirm indicator rapidly blink”
3. Configuring network based on prompt of the APP.

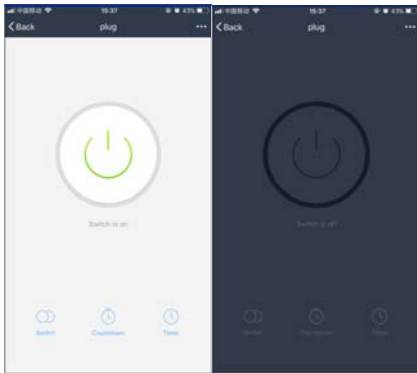


AP Mode

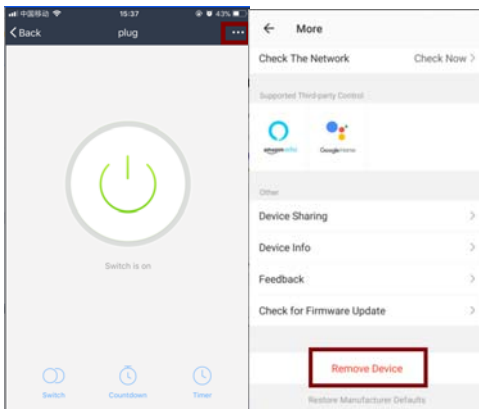
1. Press the reset button for 6s again, the LED will blink slowly. The device is in AP mode.
2. Click the “AP Mode”
3. Configuring network based on prompt of the APP.



3. plug on/off



4. Reset

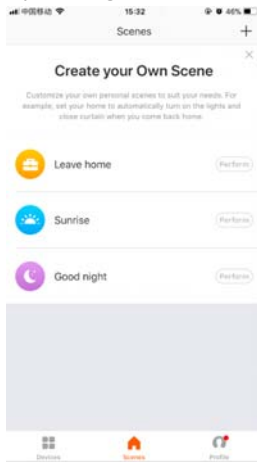


Reset:

1. Press and hold the reset button for 6s, the indicator will blink rapidly. The device is in smart wi mode to.
2. Press the reset button again, the indicator will blink slowly. The device is in AP mode.

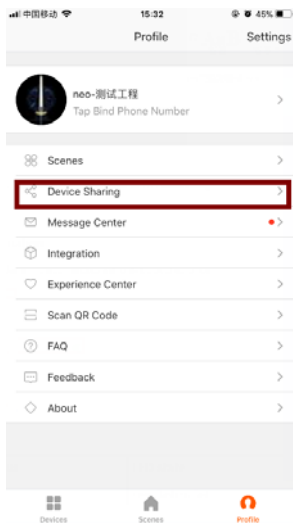
Scenes

By setting scene , let two devices are linkage.



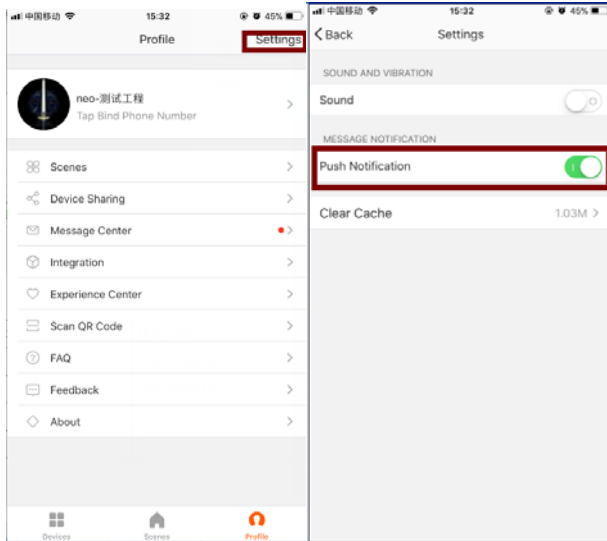
Sharing

By sharing device, let other people can control the device without adding.



Push information

The multiple alarm in three minutes will only be pushed once



LED state

device status	LED state
Smart Wi-Fi	Red LED will rapidly blink
AP mode	Red LED will slowly blink
on	green
off	red
reset	Red LED will rapidly blink(the first time reset) or slowly (the second time reset)

§ 15.19 Labelling requirements.

This device complies with part 15 of the FCC Rules. Operation is subject to the following two conditions: (1) This device may not cause harmful interference, and (2) this device must accept any interference received, including interference that may cause undesired operation.

§ 15.21 Information to user.

Any Changes or modifications not expressly approved by the party responsible for compliance could void the user's authority to operate the equipment.

§ 15.105 Information to the user.

Note: This equipment has been tested and found to comply with the limits for a Class B digital device, pursuant to part 15 of the FCC Rules. These limits are designed to provide reasonable protection against harmful interference in a residential installation. This equipment generates uses and can radiate radio frequency energy and, if not installed and used in accordance with the instructions, may cause harmful interference to radio communications. However, there is no guarantee that interference will not occur in a particular installation. If this equipment does cause harmful interference to radio or television reception, which can be determined by turning the equipment off and on, the user is encouraged to try to correct the interference by one or more of the following measures:

- Reorient or relocate the receiving antenna.
- Increase the separation between the equipment and receiver.
- Connect the equipment into an outlet on a circuit different from that to which the receiver is connected.
- Consult the dealer or an experienced radio/TV technician for help.

*** RF warning for Portable device:**

The device has been evaluated to meet general RF exposure requirement. The device can be used in portable exposure condition without restriction.