

# **FCC TEST REPORT**

## **FCC ID: Z52NAS-WR01Z**

Product : Power plug(US)

Model Name : NAS-WR01Z

Brand : Coolcam

Report No. : PT800241151223E-FC01

### **Prepared for**

SHENZHEN NEO ELECTRONICS CO.,LTD  
East6/F Building 2,Laobing industry,Baoan District,  
Shenzhen, China

### **Prepared by**

DongGuan Precise Testing Service Co.,Ltd.  
Building D, Baoding Technology Park, Guangming Road 2, Guangming Community  
Dongcheng District, Dongguan, Guangdong, China



**TEST RESULT CERTIFICATION**

Applicant's name : SHENZHEN NEO ELECTRONICS CO.,LTD  
Address : East6/F Building 2,Laobing industry,Baoan District,Shenzhen,China  
Manufacture's name : SHENZHEN NEO ELECTRONICS CO.,LTD  
Address : East6/F Building 2,Laobing industry,Baoan District,Shenzhen,China  
Product name : Power plug(US)  
Model name : NAS-WR01Z  
Standards : FCC CFR47 Part 15 Section 15.249  
Test procedure : ANSI C63.10:2013  
Test Date : Dec.28,2015 - Mar.09, 2016  
Date of Issue : Mar.10, 2016  
Test Result : Pass

This device described above has been tested by PTS, and the test results show that the equipment under test (EUT) is in compliance with the FCC requirements. And it is applicable only to the tested sample identified in the report.

This report shall not be reproduced except in full, without the written approval of PTS, this document may be altered or revised by PTS, personal only, and shall be noted in the revision of the document.

Testing Engineer

August Qiu

Technical Manager

Hack Ye

Authorized Signatory

Chris Du



## Contents

	Page
<b>2 TEST SUMMARY.....</b>	<b>4</b>
<b>3 GENERAL INFORMATION.....</b>	<b>5</b>
3.1 GENERAL DESCRIPTION OF E.U.T.....	5
3.2 TEST MODE.....	5
<b>4 EQUIPMENT DURING TEST .....</b>	<b>6</b>
4.1 EQUIPMENTS LIST.....	6
4.2 MEASUREMENT UNCERTAINTY.....	6
<b>5 CONDUCTED EMISSION.....</b>	<b>7</b>
5.1 E.U.T. OPERATION.....	7
5.2 EUT SETUP .....	7
5.3 MEASUREMENT DESCRIPTION.....	8
5.4 CONDUCTED EMISSION TEST RESULT .....	8
<b>6 PERIODIC OPERATION.....</b>	<b>10</b>
<b>7 RADIATED SPURIOUS EMISSIONS.....</b>	<b>11</b>
7.1 EUT OPERATION .....	11
7.2 TEST SETUP.....	12
7.3 SPECTRUM ANALYZER SETUP.....	13
7.4 TEST PROCEDURE.....	14
7.5 SUMMARY OF TEST RESULTS.....	15
<b>8 OUTSIDE OF BAND EMISSION .....</b>	<b>17</b>
8.1 TEST PROCEDURE.....	17
<b>9 20DB BANDWIDTH MEASUREMENT.....</b>	<b>18</b>
9.1 TEST PROCEDURE.....	18
9.2 TEST RESULT.....	18
<b>10 ANTENNA REQUIREMENT.....</b>	<b>19</b>
<b>11 TEST SETUP .....</b>	<b>20</b>
<b>12 EUT PHOTOS.....</b>	<b>22</b>



## 2 Test Summary

Test Items	Test Requirement	Result
Conducted Emissions	15.207	PASS
Radiated Emission	15.249(a) 15.209 15.205(a)	PASS
Periodic Operation	15.35(c)	PASS
Outside of Band Emission	15.249 15.205 15.209	PASS
20dB Bandwidth	15:215(c)	PASS
Antenna Requirement	15.203	PASS

Remark:

N/A: Not Applicable



### 3 General Information

#### 3.1 General Description of E.U.T.

Product Name : Power plug(US)  
Model Name : NAS-WR01Z  
Model Description : N/A  
Operation Frequency: : 908.42MHz  
Antenna installation: : PCB Printed Antenna  
Antenna Gain: : 0dBi  
Type of Modulation : FSK  
The lowest oscillator : 32MHz  
Power supply : AC120V 60Hz

#### 3.2 Test Mode

All test mode(s) and condition(s) mentioned were considered and evaluated respectively by performing full tests, the worst data were recorded and reported.

Modulation	Test mode	Low channel	Middle channel	High channel
FSK	continuously Transmitting	908.42MHz	\	\



## 4 Equipment During Test

### 4.1 Equipments List

Radiated Emissions							
Item	Kind of Equipment	Manufacturer	Type No.	Serial No.	Last calibration	Calibrated until	Calibration period
1	EMI Test Receiver	Rohde & Schwarz	ESCI	101417	July 15, 2015	July 14, 2016	1 year
2	EMC Analyzer (9k~26.5GHz)	Agilent	E4407B	MY45109572	Aug.04, 2015	Aug.03, 2016	1 year
3	Trilog Broadband Antenna	SCHWARZECK	VULB9160	9160-3355	July 15, 2015	July 14, 2016	1 year
4	Amplifier	EM	EM-30180	060538	July 15, 2015	July 14, 2016	1 year
5	Horn Antenna	SCHWARZECK	BBHA9120D	9120D-1246	July 15, 2015	July 14, 2016	1 year
6	Coaxial Cable(below 1GHz)	LARGE	CALB1	-	July 15, 2015	July 14, 2016	1 year
7	Coaxial Cable(above 1GHz)	LARGE	CALB2	-	July 15, 2015	July 14, 2016	1 year

### 4.2 Measurement Uncertainty

Parameter	Uncertainty
RF output power, conducted	±1.0dB
Power Spectral Density, conducted	±2.2dB
Radio Frequency	± 1 x 10 <sup>-6</sup>
Bandwidth	± 1.5 x 10 <sup>-6</sup>
Time	±2%
Duty Cycle	±2%
Temperature	±1°C
Humidity	±5%
DC and low frequency voltages	±3%
Conducted Emissions (150kHz~30MHz)	±3.64dB
Radiated Emission(30MHz~1GHz)	±5.03dB
Radiated Emission(1GHz~25GHz)	±4.74dB

## 5 Conducted Emission

Test Requirement: : FCC CFR 47 Part 15 Section 15.207

Test Method: : ANSI C63.10:2013

Test Result: : PASS

Frequency Range: : 150kHz to 30MHz

Class/Severity: : Class B

Limit: : 66-56 dB $\mu$ V between 0.15MHz & 0.5MHz  
 : 56 dB $\mu$ V between 0.5MHz & 5MHz  
 : 60 dB $\mu$ V between 5MHz & 30MHz

Detector: : Peak for pre-scan (9kHz Resolution Bandwidth)

### 5.1 E.U.T. Operation

Operating Environment :

Temperature: : 25.5 °C

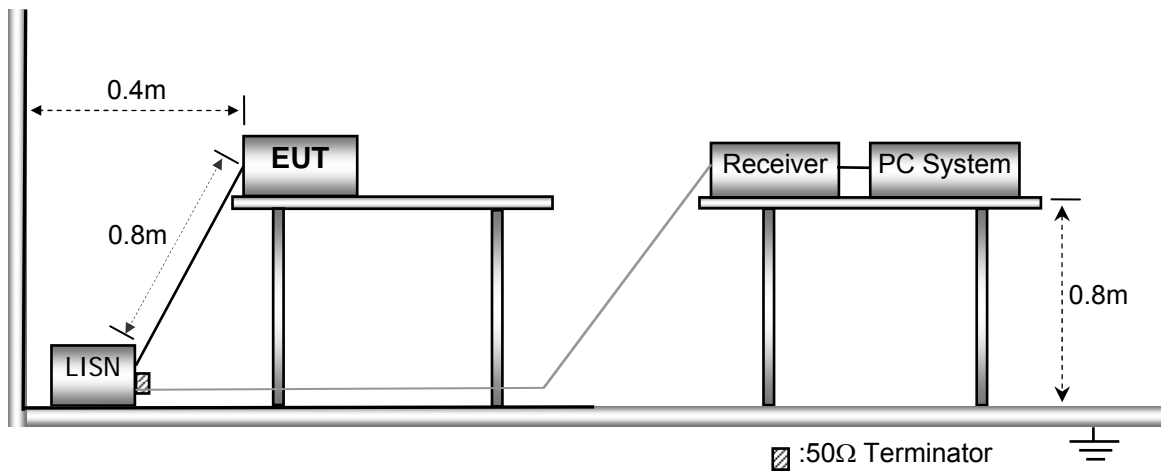
Humidity: : 51 % RH

Atmospheric Pressure: : 101.2kPa

EUT Operation : : Refer to section 3.3

### 5.2 EUT Setup

The conducted emission tests were performed using the setup accordance with the ANSI C63.10:2013.



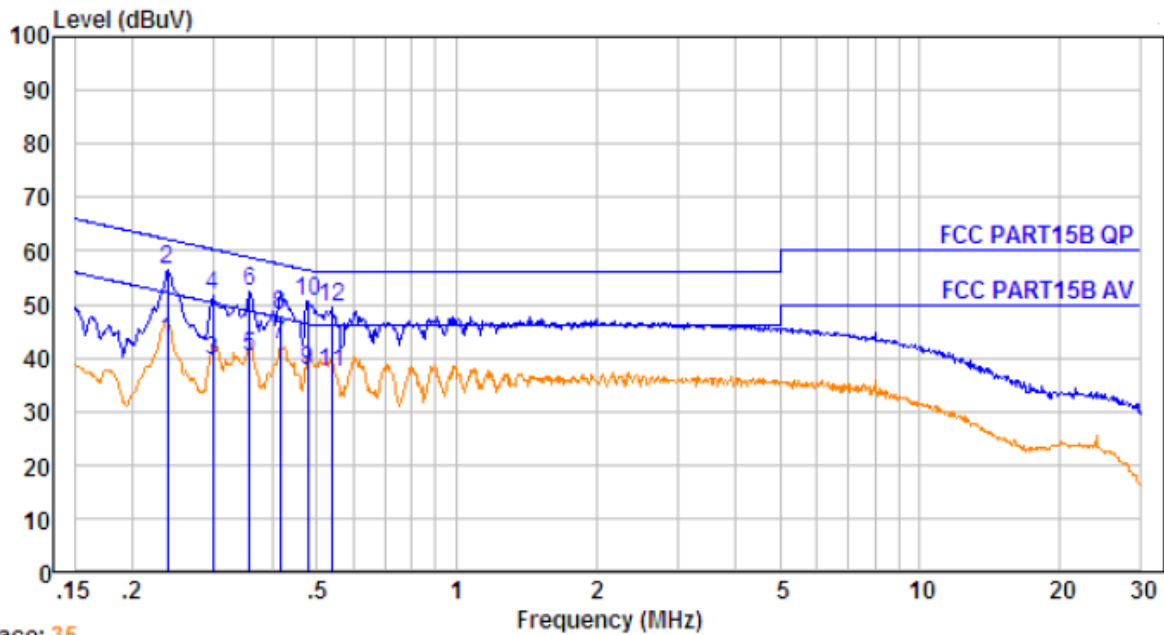


### 5.3 Measurement Description

The maximised peak emissions from the EUT was scanned and measured for both the Live and Neutral Lines. Quasi-peak & average measurements were performed if peak emissions were within 6dB of the average limit line.

### 5.4 Conducted Emission Test Result

Live line:



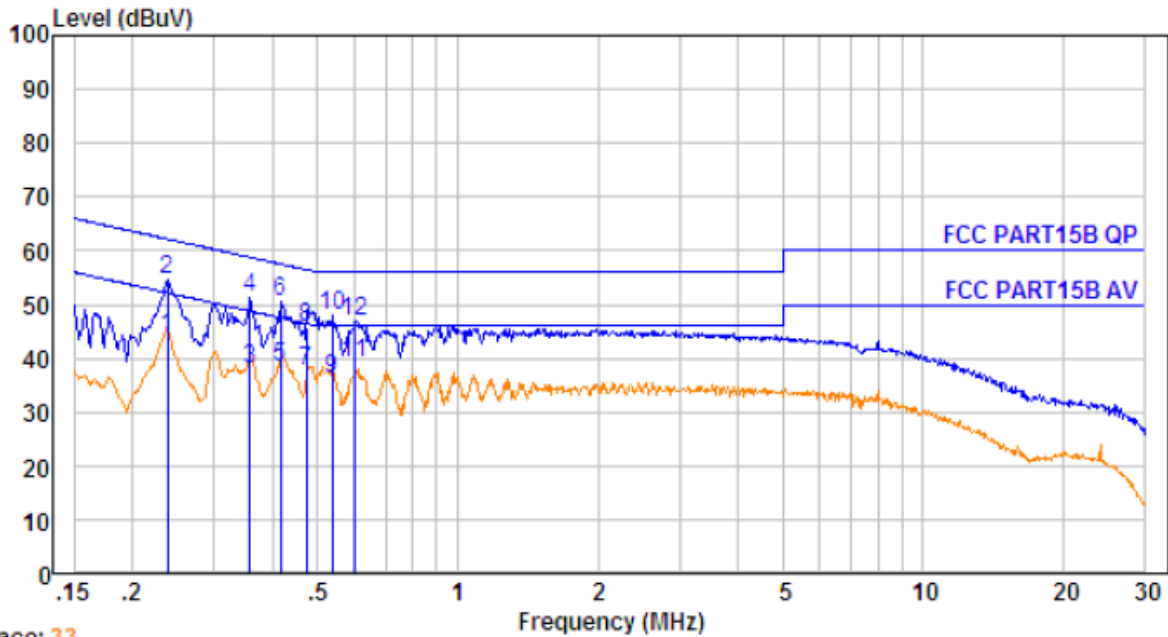
Trace: 35

No.	Freq MHz	Cable Loss dB	AMN Factor dB	Receiver Reading dBUV	Emission Level dBUV	Limit dBUV	Over Limit dB	Remark
1.	0.238	10.62	0.60	32.13	43.35	52.17	-8.82	Average
2.	0.238	10.62	0.60	45.13	56.35	62.17	-5.82	QP
3.	0.299	10.63	0.60	28.35	39.58	50.28	-10.70	Average
4.	0.299	10.63	0.60	40.35	51.58	60.28	-8.70	QP
5.	0.358	10.63	0.60	29.01	40.24	48.78	-8.54	Average
6.	0.358	10.63	0.60	41.01	52.24	58.78	-6.54	QP
7.	0.417	10.64	0.60	31.10	42.34	47.50	-5.16	Average
8.	0.417	10.64	0.60	36.70	47.94	57.50	-9.56	QP
9.	0.479	10.64	0.60	26.46	37.70	46.36	-8.66	Average
10.	0.479	10.64	0.60	39.46	50.70	56.36	-5.66	QP
11.	0.538	10.65	0.60	26.08	37.33	46.00	-8.67	Average
12.	0.538	10.65	0.60	38.08	49.33	56.00	-6.67	QP





Neutral line:



Trace: 33

No.	Freq MHz	Cable Loss dB	AMN Factor dB	Receiver Reading dBuV	Emission Level dBuV	Limit dBuV	Over Limit dB	Remark
1.	0.238	10.62	0.60	32.57	43.79	52.17	-8.38	Average
2.	0.238	10.62	0.60	43.57	54.79	62.17	-7.38	QP
3.	0.358	10.63	0.60	26.95	38.18	48.78	-10.60	Average
4.	0.358	10.63	0.60	39.95	51.18	58.78	-7.60	QP
5.	0.417	10.64	0.60	27.16	38.40	47.51	-9.11	Average
6.	0.417	10.64	0.60	39.16	50.40	57.51	-7.11	QP
7.	0.474	10.64	0.60	26.24	37.48	46.44	-8.96	Average
8.	0.474	10.64	0.60	34.60	45.84	56.44	-10.60	QP
9.	0.538	10.65	0.60	24.78	36.03	46.00	-9.97	Average
10.	0.538	10.65	0.60	36.78	48.03	56.00	-7.97	QP
11.	0.601	10.66	0.60	27.73	38.99	46.00	-7.01	Average
12.	0.601	10.66	0.60	35.73	46.99	56.00	-9.01	QP

## 6 Periodic Operation

The duty cycle was determined by the following equation:

To calculate the actual field intensity, the duty cycle correction factor in decibel is needed for later use and can be obtained from following conversion

Duty Cycle(%)=Total On interval in a complete pulse train/ Length of a complete pulse train \* %

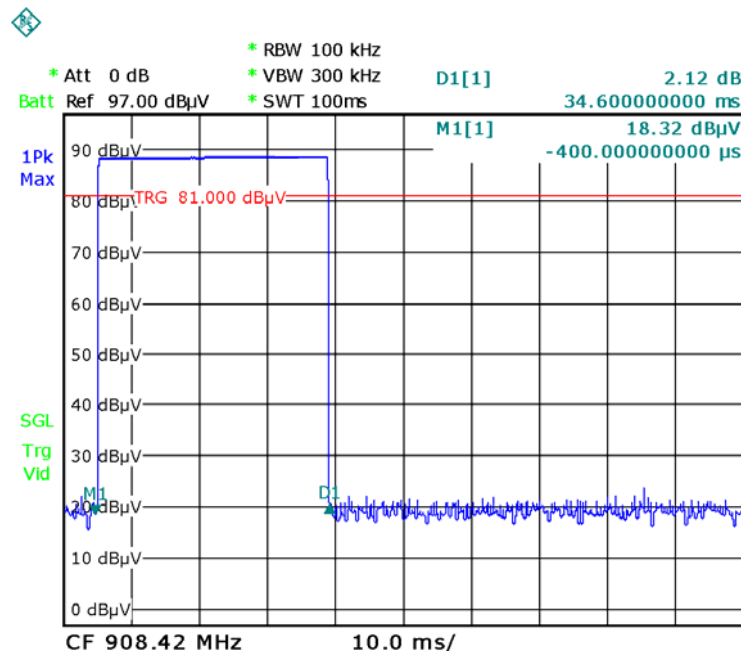
Duty Cycle Correction Factor (dB)=20 \* Log<sub>10</sub>(Duty Cycle(%))

Total transmission time(ms)	34.60
Length of a complete transmission period(ms)	100
Duty Cycle(%)	34.60
Duty Cycle Correction Factor(dB)	-9.22

Refer to the duty cycle plot (as below),This device meets the FCC requirement.

Length of a complete pulse train:

Remark: FCC part15.35(c) required that a complete pulse train is more than 0.1 seconds, the measured field strength shall be determined from the average absolute voltage during a 0.1 second interval during which the field strength is at its maximum value.





## 7 Radiated Spurious Emissions

Test Requirement: : FCC CFR47 Part 15 Section 15.249 & 15.207 & 15.205  
 Test Method: : ANSI C63.10:2013  
 Test Result: : PASS  
 Measurement Distance: : 3m  
 Limit: : See the follow table

Frequency (MHz)	Field Strength		Field Strength Limit at 3m Measurement Dist	
	uV/m	Distance (m)	uV/m	dBuV/m
0.009 ~ 0.490	2400/F(kHz)	300	10000 * 2400/F(kHz)	20log <sup>(2400/F(kHz))</sup> + 80
0.490 ~ 1.705	24000/F(kHz)	30	100 * 24000/F(kHz)	20log <sup>(24000/F(kHz))</sup> + 40
1.705 ~ 30	30	30	100 * 30	20log <sup>(30)</sup> + 40
30 ~ 88	100	3	100	20log <sup>(100)</sup>
88 ~ 216	150	3	150	20log <sup>(150)</sup>
216 ~ 960	200	3	200	20log <sup>(200)</sup>
Above 960	500	3	500	20log <sup>(500)</sup>

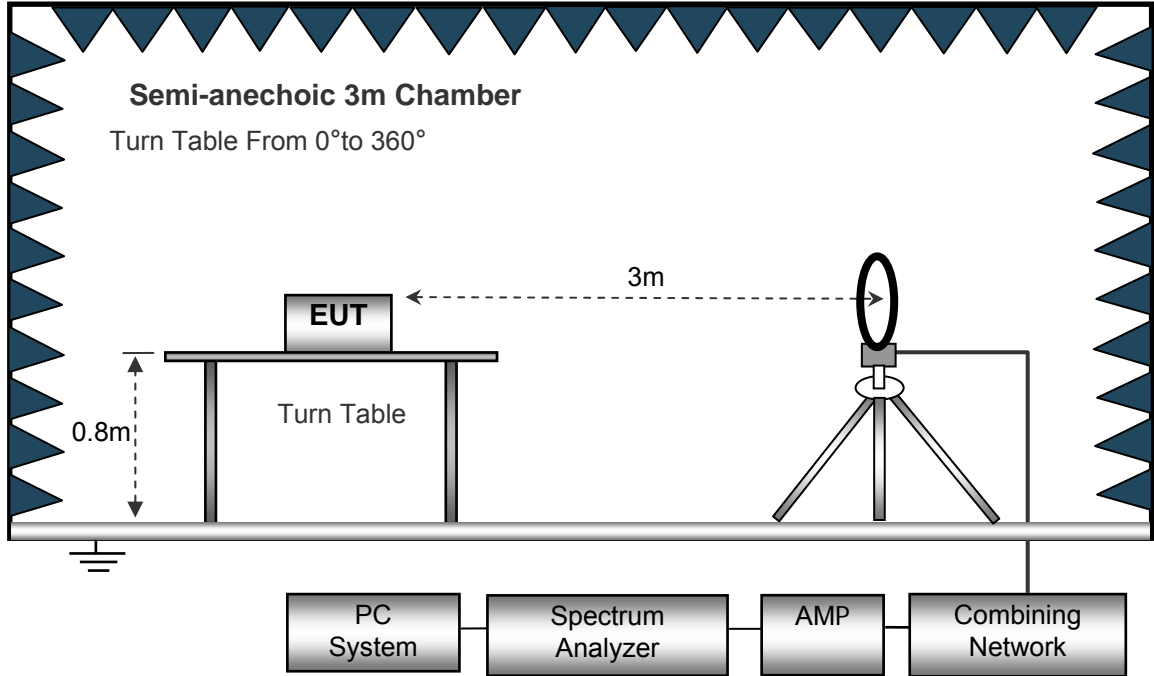
### 7.1 EUT Operation

Operating Environment :  
 Temperature: : 23.5 °C  
 Humidity: : 51.1 % RH  
 Atmospheric Pressure: : 101.2kPa  
 EUT Operation : : Refer to section 3.3

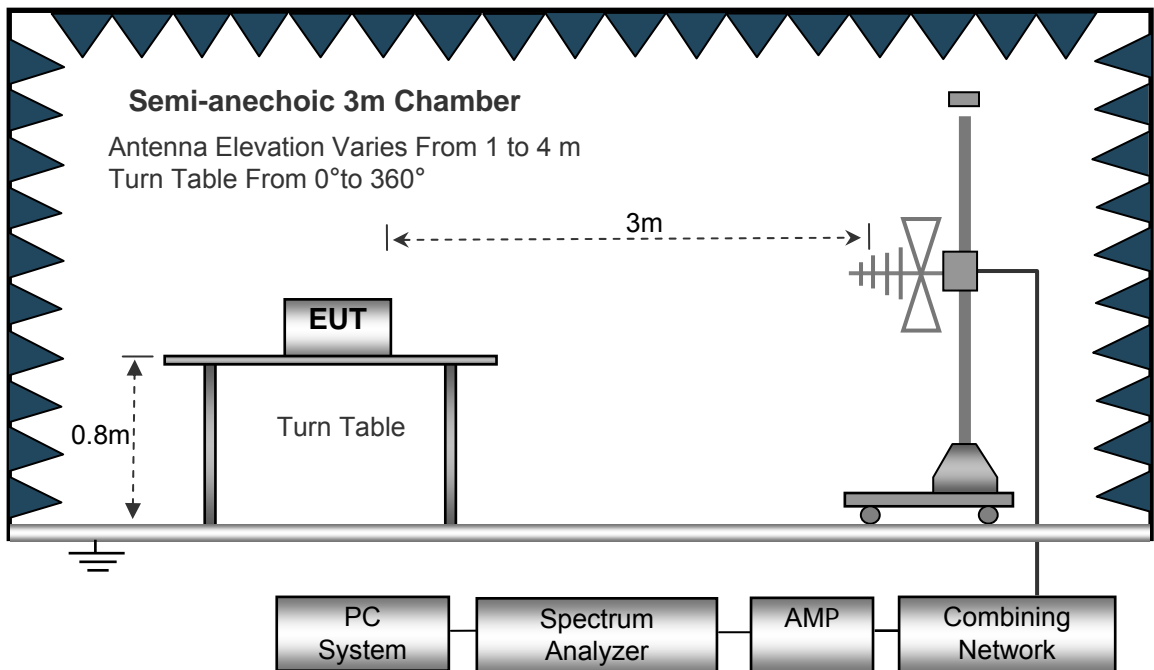
### 7.2 Test Setup

The radiated emission tests were performed in the 3m Semi- Anechoic Chamber test site

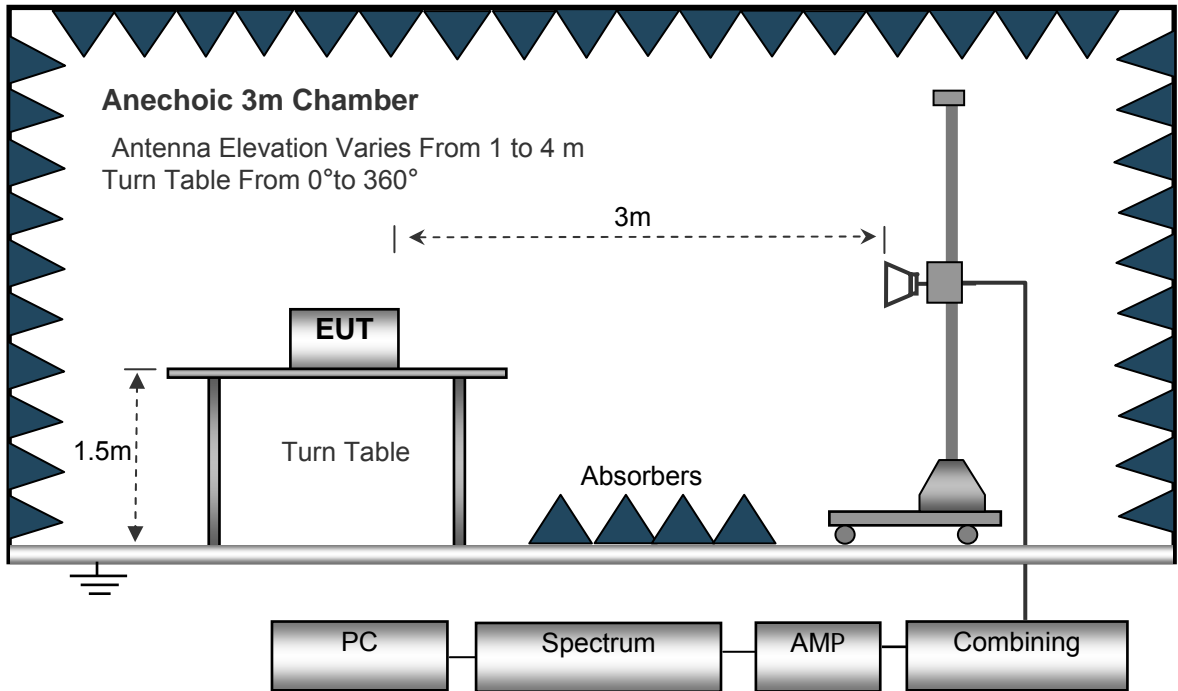
The test setup for emission measurement below 30MHz.



The test setup for emission measurement from 30 MHz to 1 GHz.



The test setup for emission measurement above 1 GHz.



### 7.3 Spectrum Analyzer Setup

Below 30MHz

IF Bandwidth	10kHz
Resolution Bandwidth	10kHz
Video Bandwidth	10kHz

30MHz ~ 1GHz

Detector	: PK
Resolution Bandwidth	: 100kHz
Video Bandwidth	: 300kHz
Detector	: QP
Resolution Bandwidth	: 120kHz
Video Bandwidth	: 300kHz

Above 1GHz

Detector	: PK
Resolution Bandwidth	: 1MHz
Video Bandwidth	: 3MHz



## 7.4 Test Procedure

1. The EUT is placed on a turntable, which is 0.8m above ground plane for below 1GHz and 1.5m for above 1GHz..
2. The turntable shall be rotated for 360 degrees to determine the position of maximum emission level.
3. EUT is set 3m away from the receiving antenna, which is moved from 1m to 4m to find out the maximum emissions. The spectrum was investigated from the lowest radio frequency signal generated in the device, without going below 9 kHz, up to the tenth harmonic of the highest fundamental frequency or to 40 GHz, whichever is lower.
4. Maximum procedure was performed on the six highest emissions to ensure EUT compliance.
5. And also, each emission was to be maximized by changing the polarization of receiving antenna both horizontal and vertical.
6. Repeat above procedures until the measurements for all frequencies are complete.
7. The radiation measurements are tested under 3-axes(X,Y,Z) position(X denotes lying on the table, Y denotes side stand and Z denotes vertical stand), After pre-test, It was found that the worse radiation emission was get at the X position. So the data shown was the X position only.



### 7.5 Summary of Test Results

Remark : 1. The testing has been conformed to 10\*908.42 =9084.2MHz.  
 2. All other emissions more than 30dB below the limit

**Test Frequency: Below 30MHz**

The lowest oscillator is 32MHz, the test is not applicable

**Test Frequency: 30MHz ~ 9084.2MHz**

Frequency	Reading	Detector	Turn table Angle	RX Antenna		Corrected Factor	Corrected Amplitude	FCC Part 15.249/209/205	
				Height	Polar			Limit	Margin
(MHz)	(dBµV)	(PK/QP/Av e)	Degree	(m)	(H/V)	(dB/m)	(dBµV/m)	(dBµV/m)	(dB)
179.54	49.27	QP	106	1.4	H	-16.93	32.34	43.5	-11.16
179.54	42.89	QP	124	1.3	V	-16.93	25.96	43.5	-17.54
908.42	89.29	QP	297	2.2	H	-5.21	84.08	94	-9.92
908.42	76.65	QP	239	1.8	V	-5.21	71.44	94	-22.56
1816.84	64.65	PK	115	1.9	H	-12.11	52.54	74	-21.46
1816.84	58.97	PK	109	1.2	V	-12.11	46.86	74	-27.14
2725.26	60.04	PK	250	2.0	H	-11.88	48.16	74	-25.84
2725.26	54.82	PK	289	2.2	V	-11.88	42.94	74	-31.06
3633.68	59.85	PK	164	2.3	H	-8.17	51.68	74	-22.32
3633.68	57.70	PK	113	2.0	V	-8.17	49.53	74	-24.47

Remark:

Corrected Factor = Cable loss + Antenna factor - Amplifier

Corrected Amplitude = Reading + Corrected Factor

Margin = Corrected Amplitude - Limit



Frequency	PK	Turn table Angle	RX Antenna		Duty cycle Factor	AV	FCC Part 15.249/209/205	
			Height	Polar			Limit	Margin
(MHz)	(dBµV/m)	Degree	(m)	(H/V)	(dB)	(dBµV/m)	(dBµV/m)	(dB)
1816.84	52.54	177	2.3	H	-9.22	43.32	54	-10.68
1816.84	46.86	54	1.3	V	-9.22	37.64	54	-16.36
2725.26	48.16	9	1.9	H	-9.22	38.94	54	-15.06
2725.26	42.94	240	1.1	V	-9.22	33.72	54	-20.28
3633.68	51.68	72	2.5	H	-9.22	42.46	54	-11.54
3633.68	49.53	54	1.0	V	-9.22	40.31	54	-13.69
Remark:								
PK + Duty cycle Factor = AV								
Margin = Corrected Amplitude - Limit								





## 8 Outside of Band Emission

- Test Requirement : 15.249(d):Emissions radiated outside of the specified frequency bands, except for harmonics, shall be attenuated by at least 50 dB below the level of the fundamental or to the general radiated emission limits in §15.209, whichever is the lesser attenuation.
- Test Method : ANSI C63.10:2013
- Test Limit : 50 dB below the level of the fundamental or to the general radiated emission limits
- Test Mode : Refer to section 3.3

### 8.1 Test Procedure

1. Remove the antenna from the EUT and then connect a low RF cable from the antenna port to the spectrum;
2. Set the spectrum analyzer: RBW = 100kHz, VBW = 300kHz, Sweep = auto

Detector function = peak, Trace = max hold

Frequency	Reading	Detector	Turn table Angle	RX Antenna		Corrected Factor	Corrected Amplitude	FCC Part 15.249/209/205	
				Height	Polar			Limit	Margin
(MHz)	(dBμV)	(PK/QP/Av e)	Degree	(m)	(H/V)	(dB/m)	(dBμV/m)	(dBμV/m)	(dB)
900.47	40.92	QP	260	1.6	H	-5.64	35.28	46	-10.72
929.63	32.97	QP	233	2.3	V	-5.09	27.88	46	-18.12
Remark:									
Corrected Factor = Cable loss + Antenna factor - Amplifier									
Corrected Amplitude = Reading + Corrected Factor									
Margin = Corrected Amplitude - Limit									



## 9 20dB Bandwidth Measurement

Test Requirement : FCC CFR47 Part 15 Section 15.249  
 Test Method : ANSI C63.10:2013  
 Test Mode : Refer to section 3.3

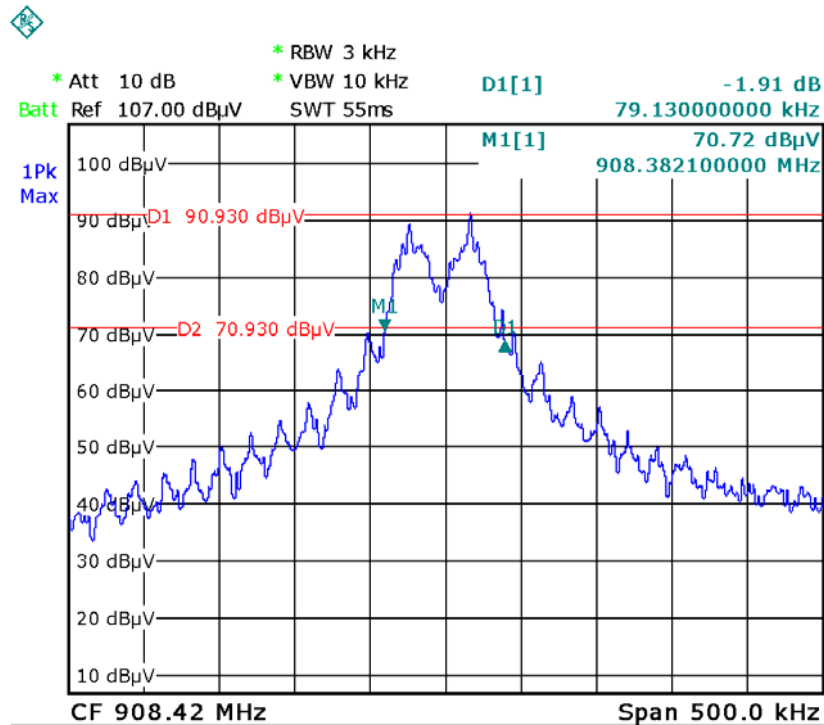
### 9.1 Test Procedure

1. Remove the antenna from the EUT and then connect a low RF cable from the antenna port to the spectrum;
2. Set the spectrum analyzer: For BLE, RBW = 3 kHz, VBW = 10kHz,

### 9.2 Test Result

Test Frequency	Bandwidth
908.42MHz	79.13kHz

Test plots





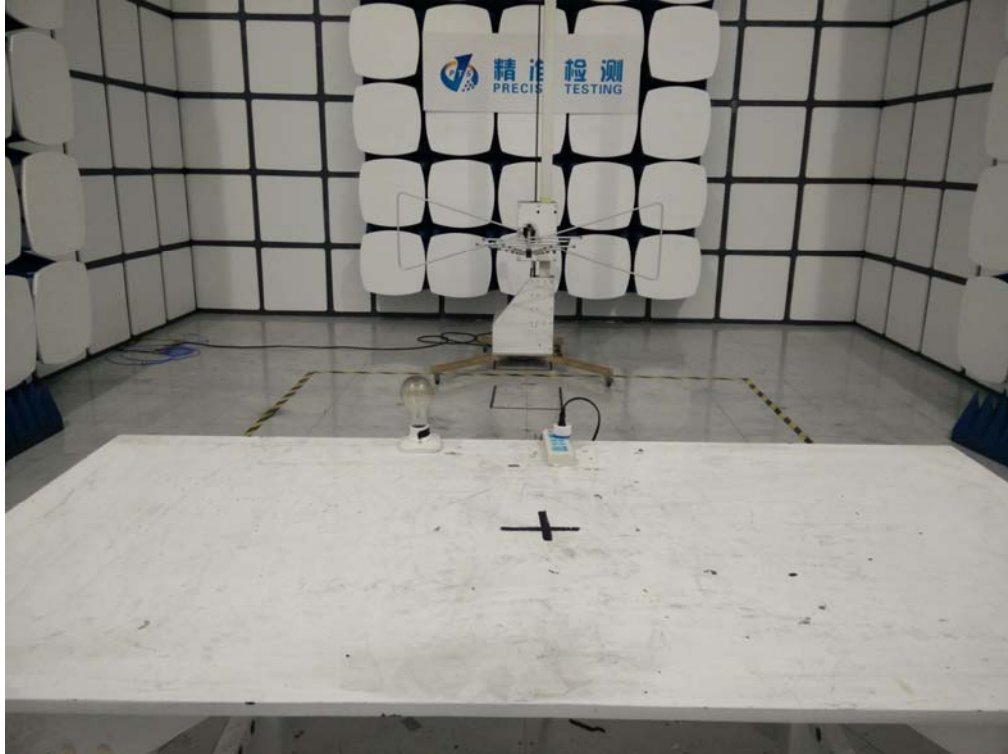
## 10 Antenna Requirement

According to the FCC part15.203, a transmitter can only be sold or operated with antennas with which it was approved. This product has an PCB printed antenna which meet the requirement of this section.

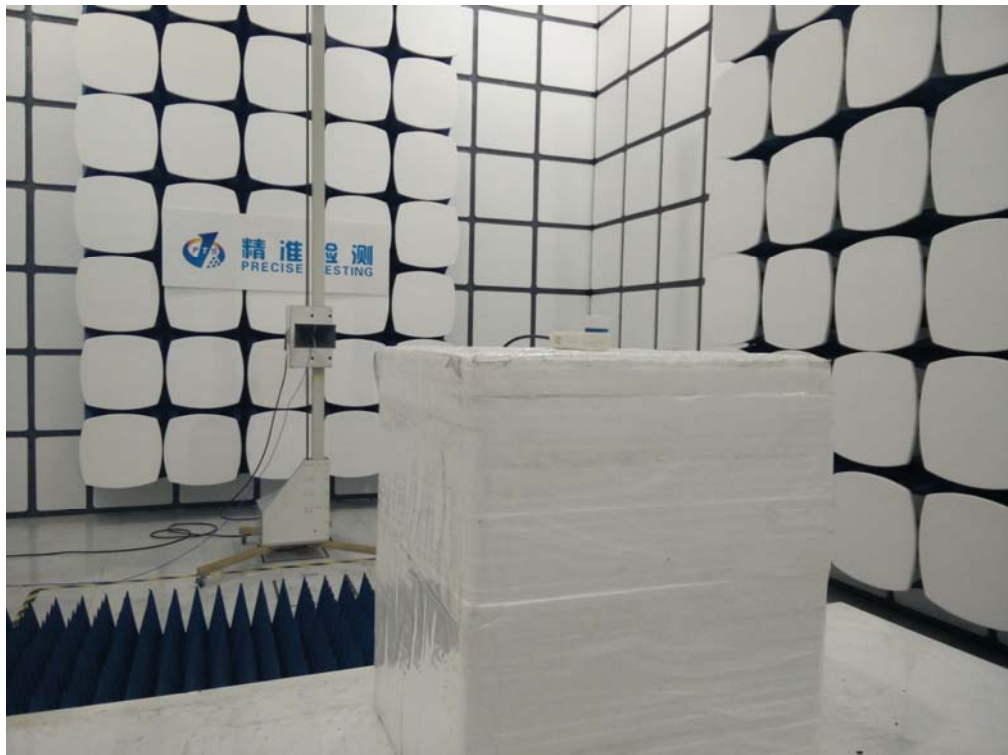


### 11 Test Setup

Radiated Spurious Emissions  
From 30MHz-1000MHz



Above 1GHz





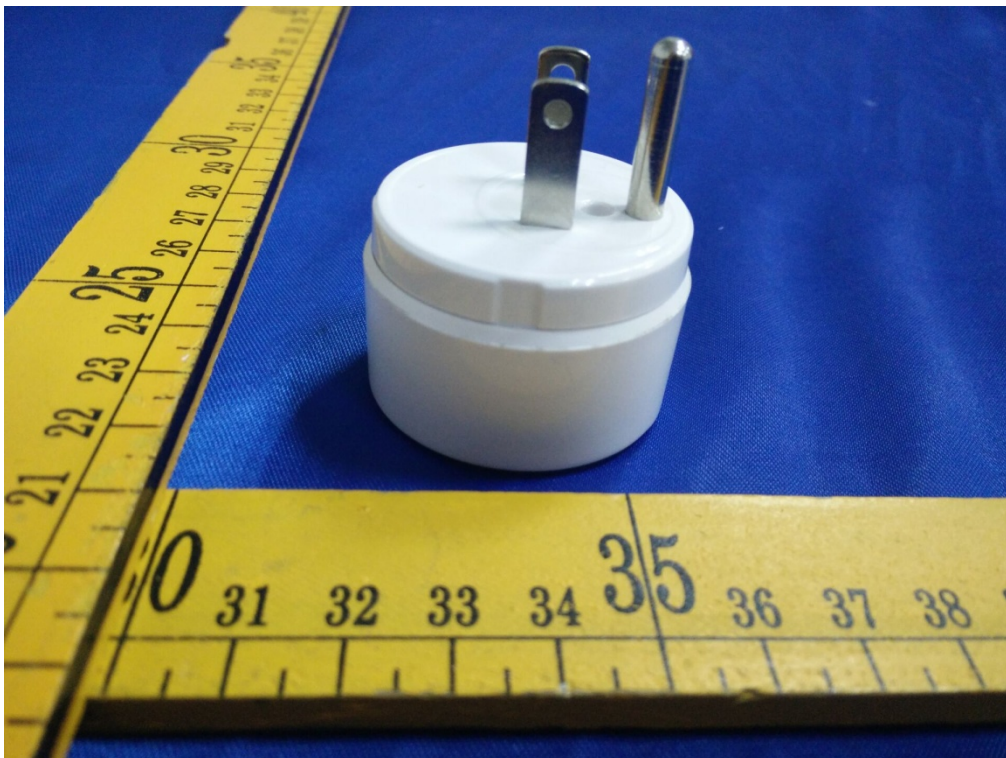
### Conducted Emissions

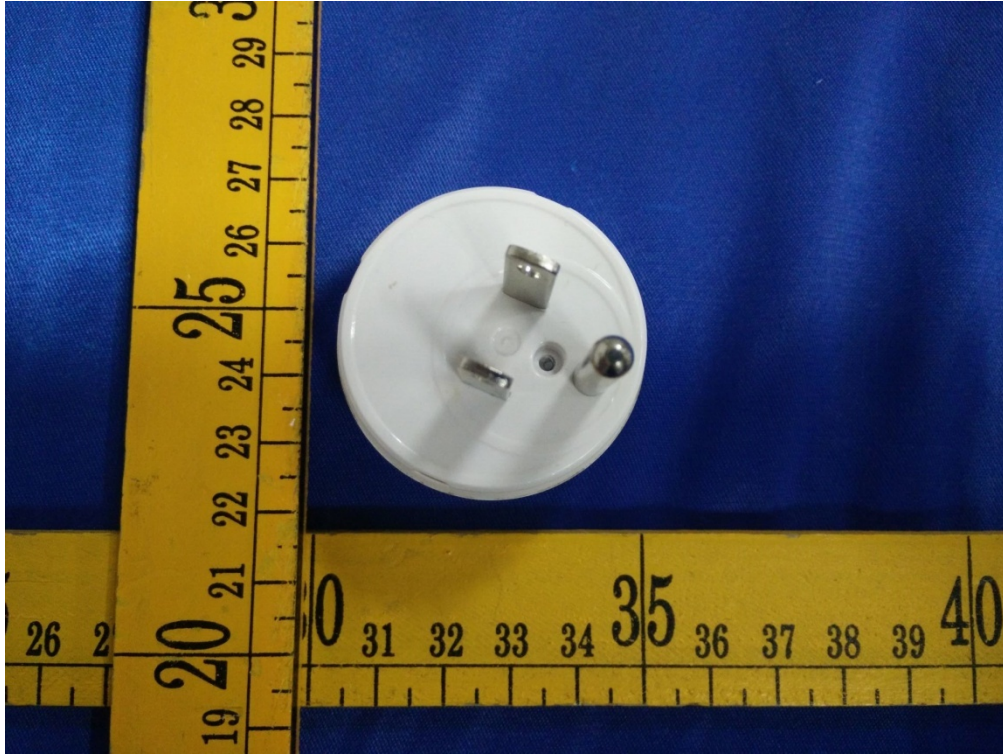




## 12 EUT Photos

External Photos

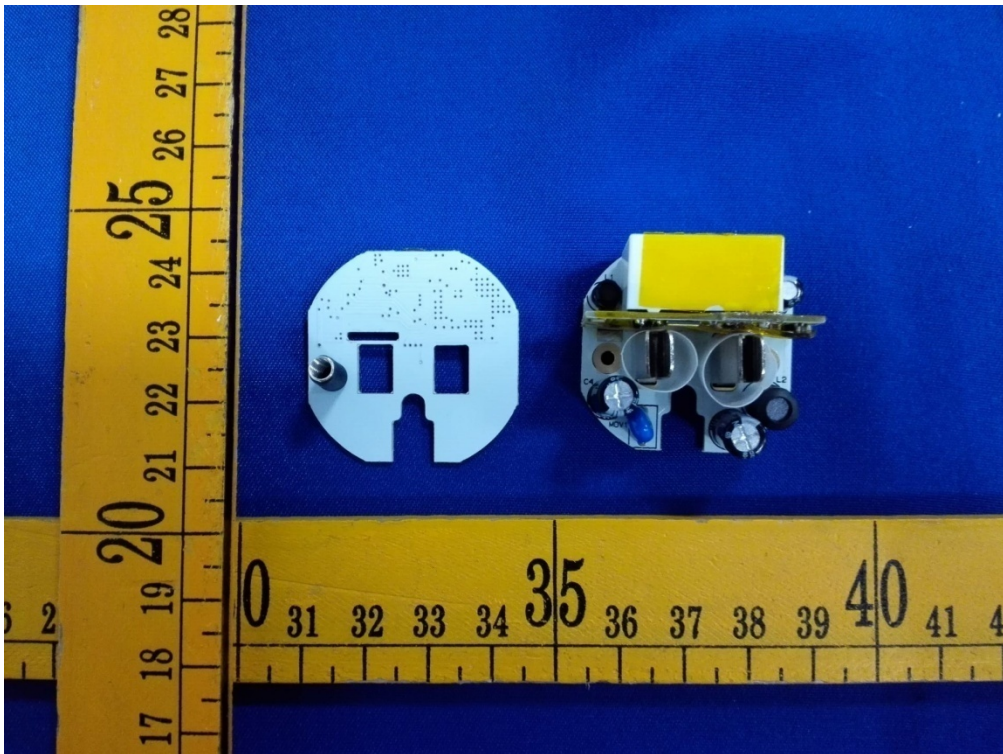
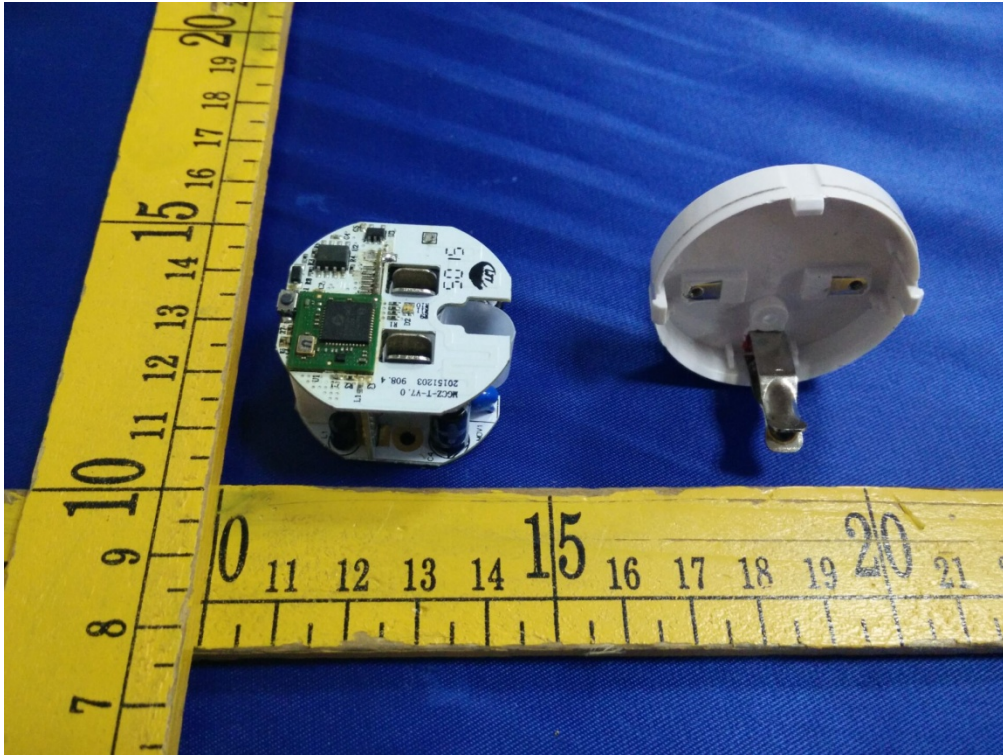


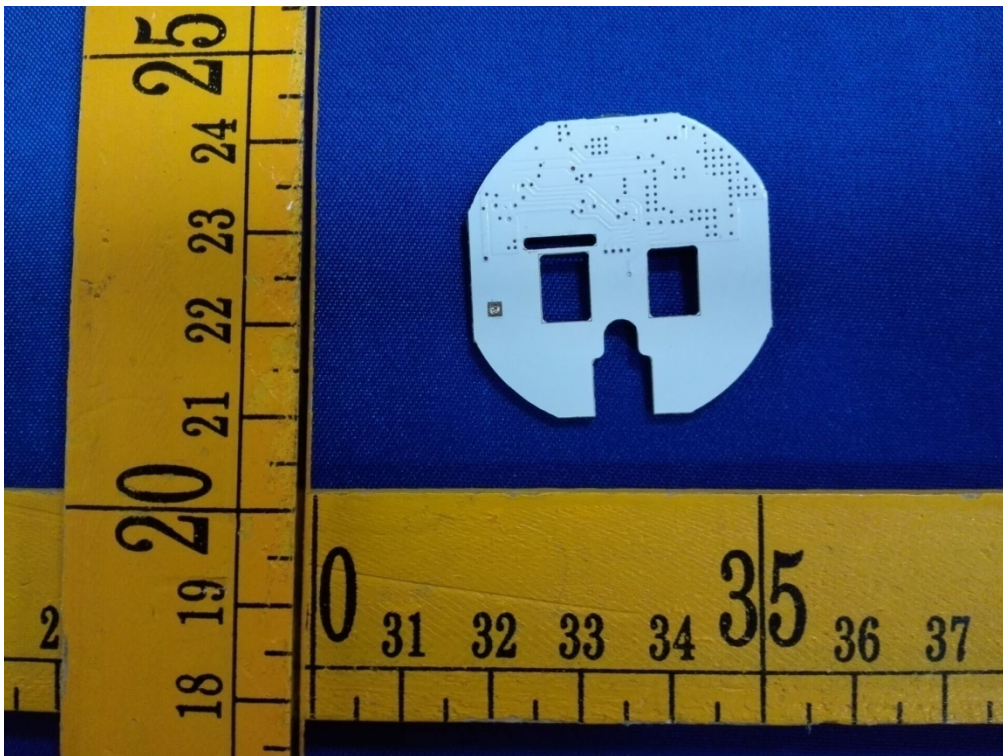
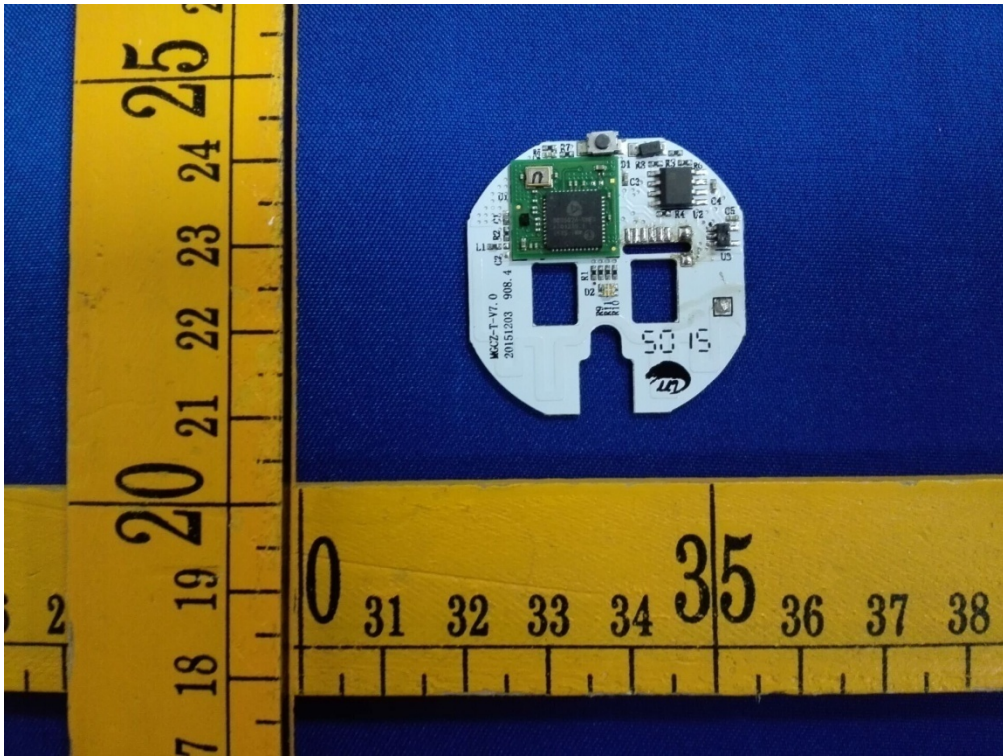


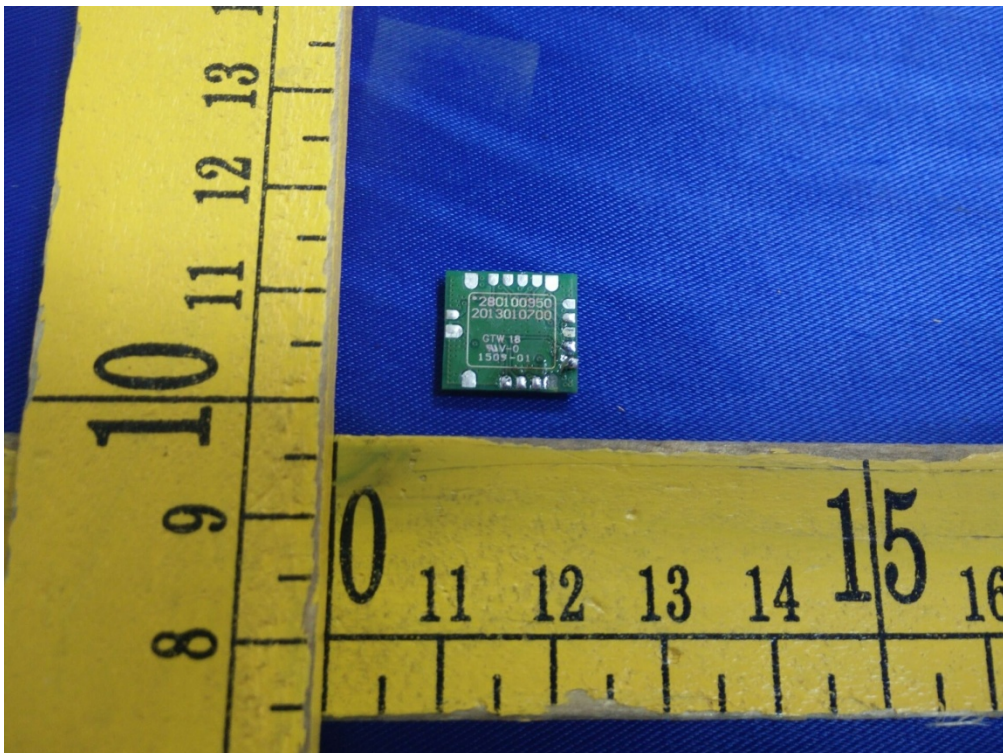
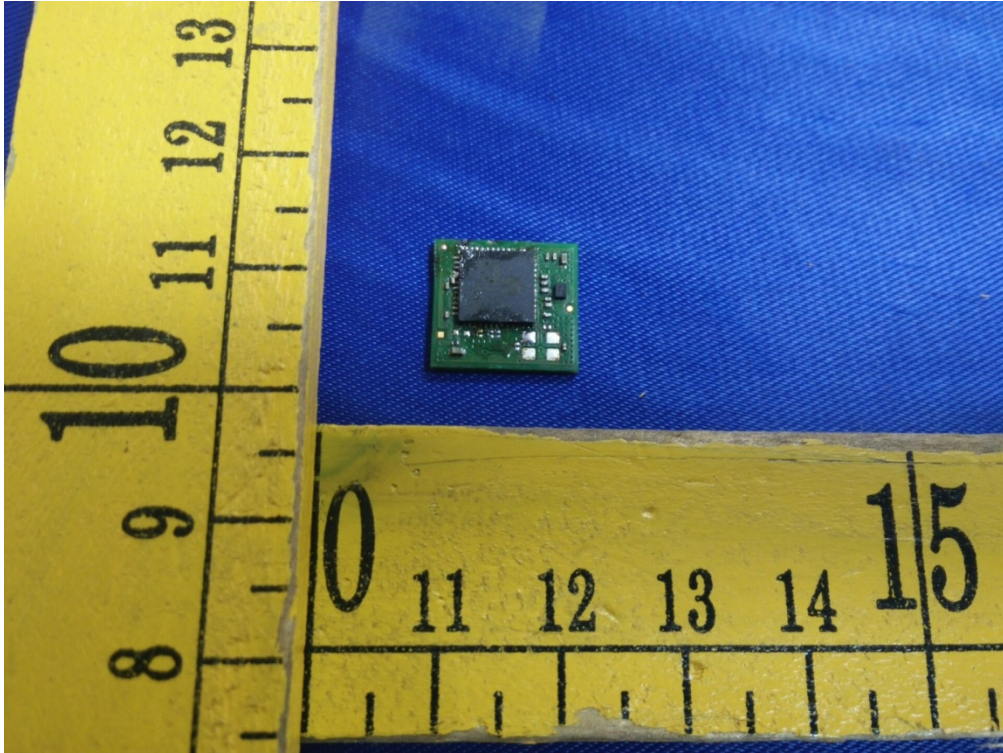


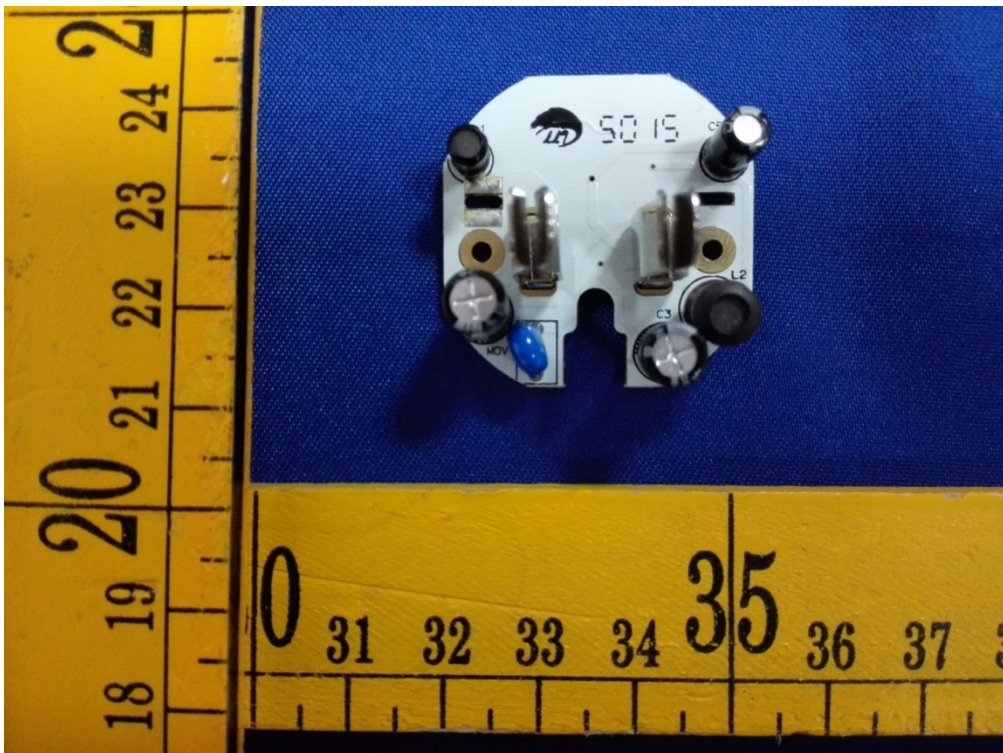
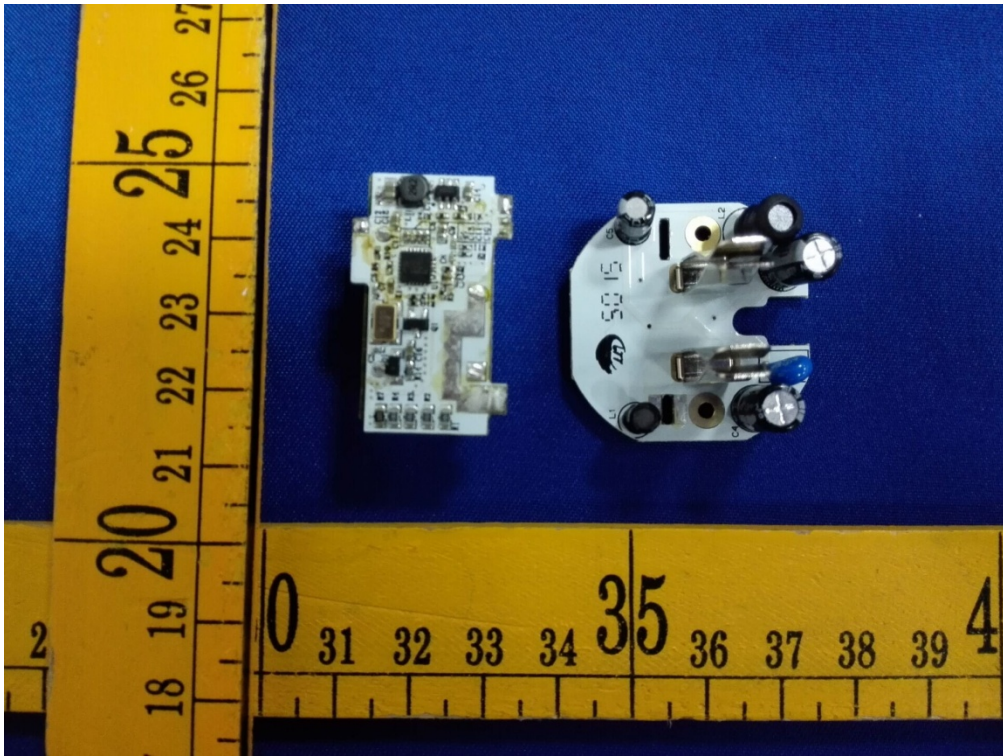


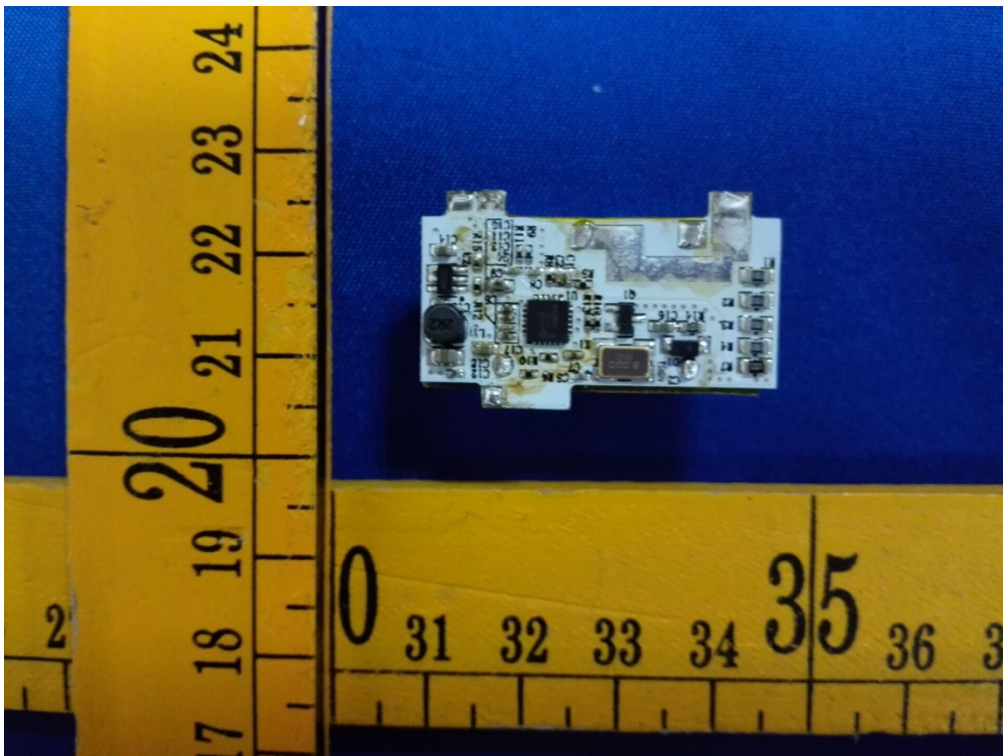
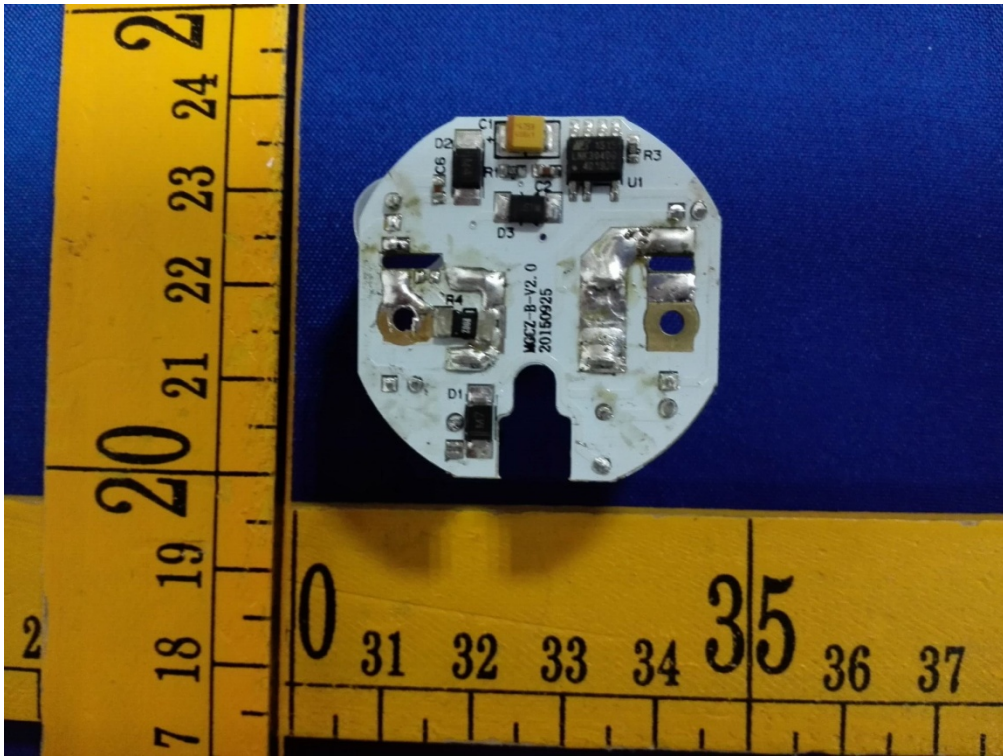
Internal Photos

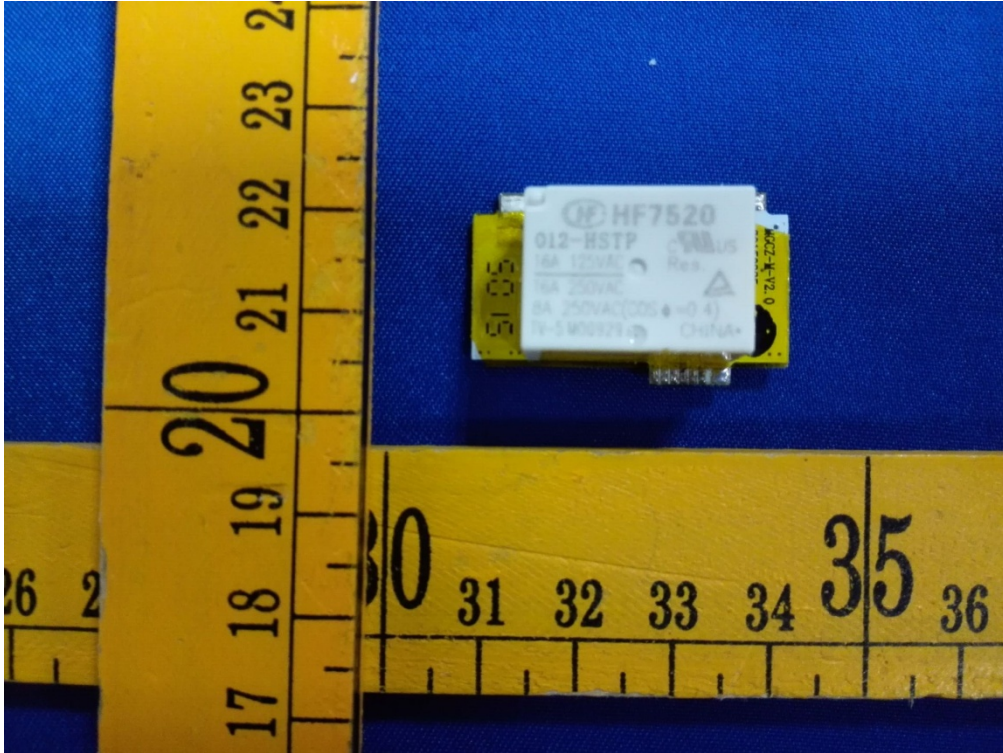












\*\*\*\*\*THE END REPORT\*\*\*\*\*