

950-000026C Internal Photos.

Fig 1. Product with battery cover removed.



Fig 2. Close up of the Battery Compartment assembly

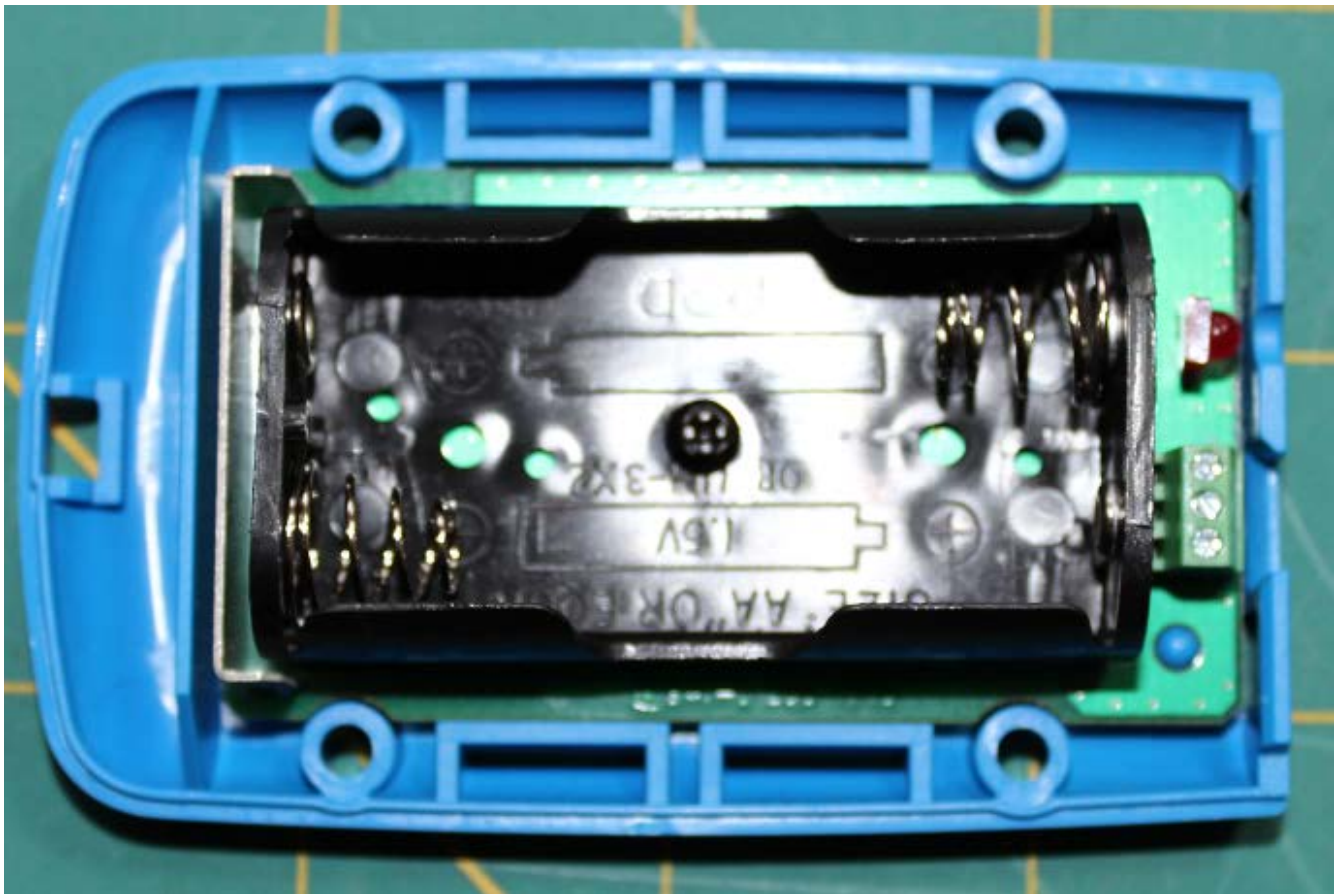


Fig 3. Close up of the Battery Compartment Left-hand side, showing the wire antenna placement.

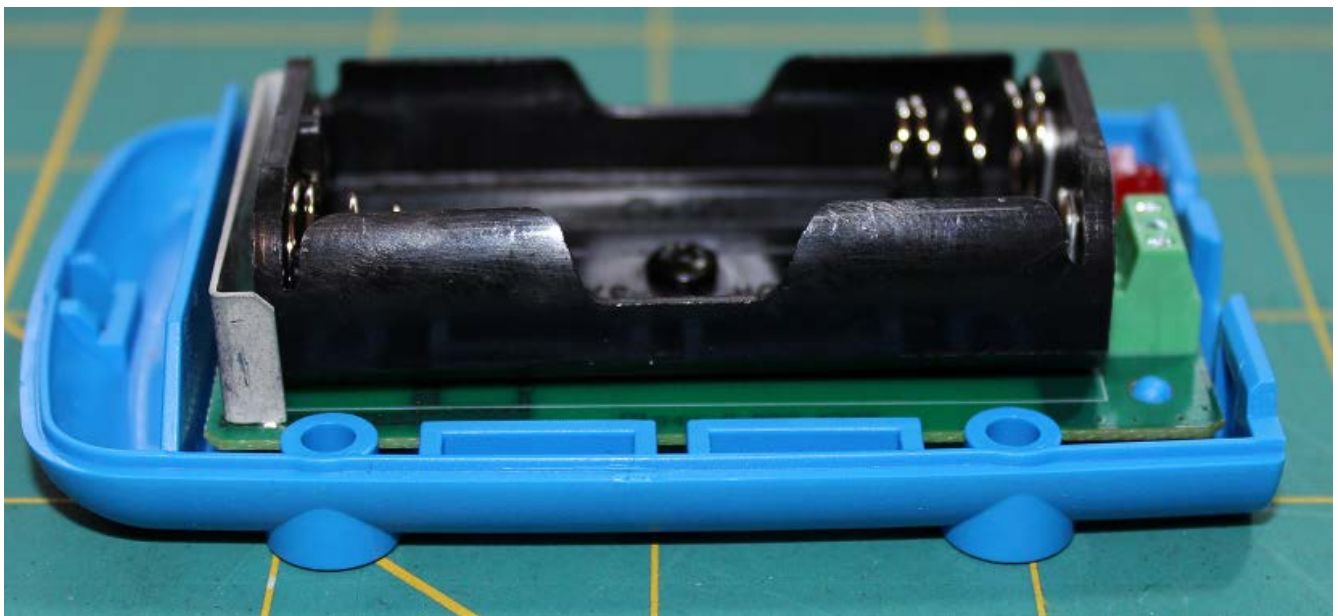


Fig 4. Rear assembly, showing the terminal block and LED

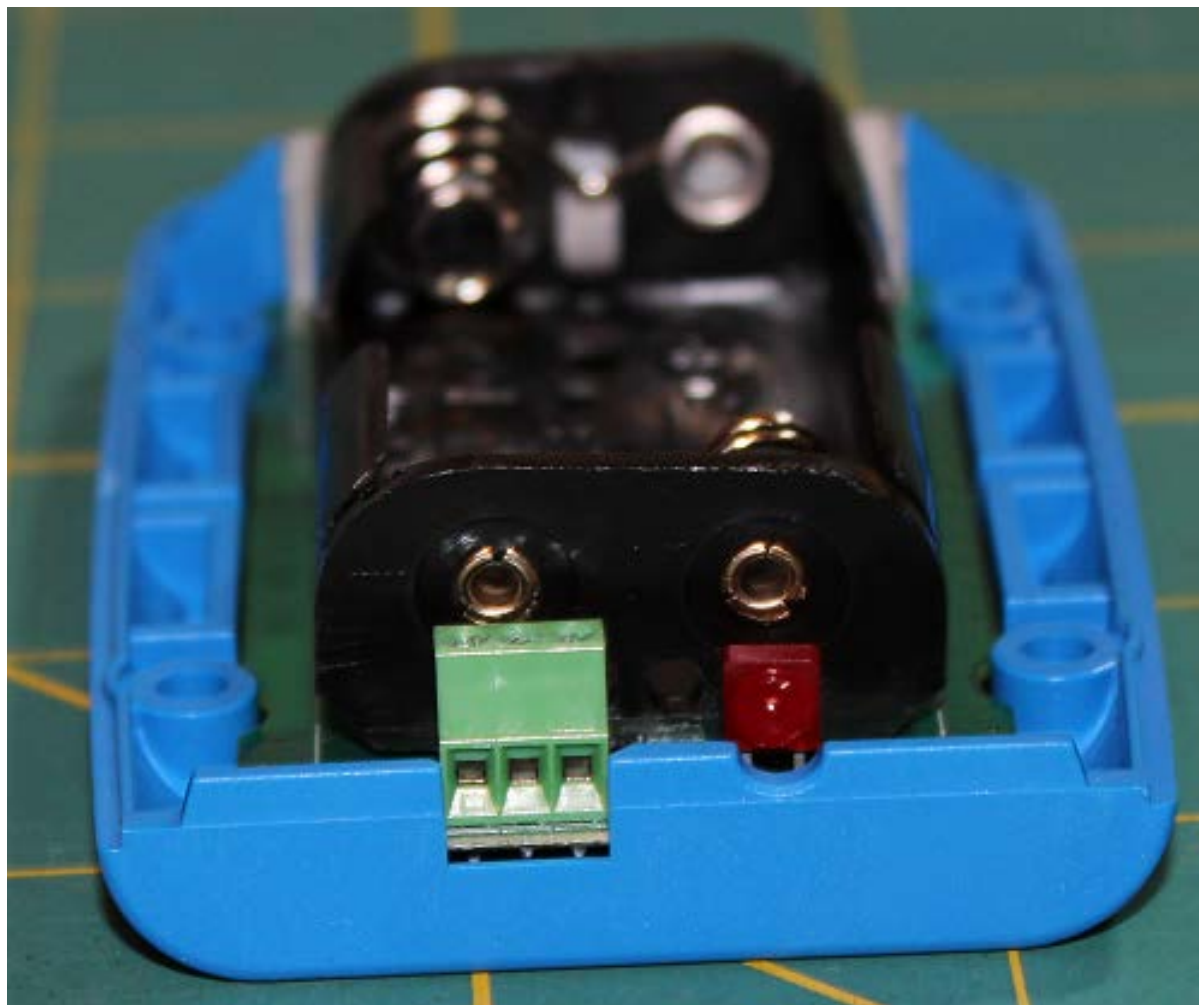


Fig. 5 Right-hand side of the assembly

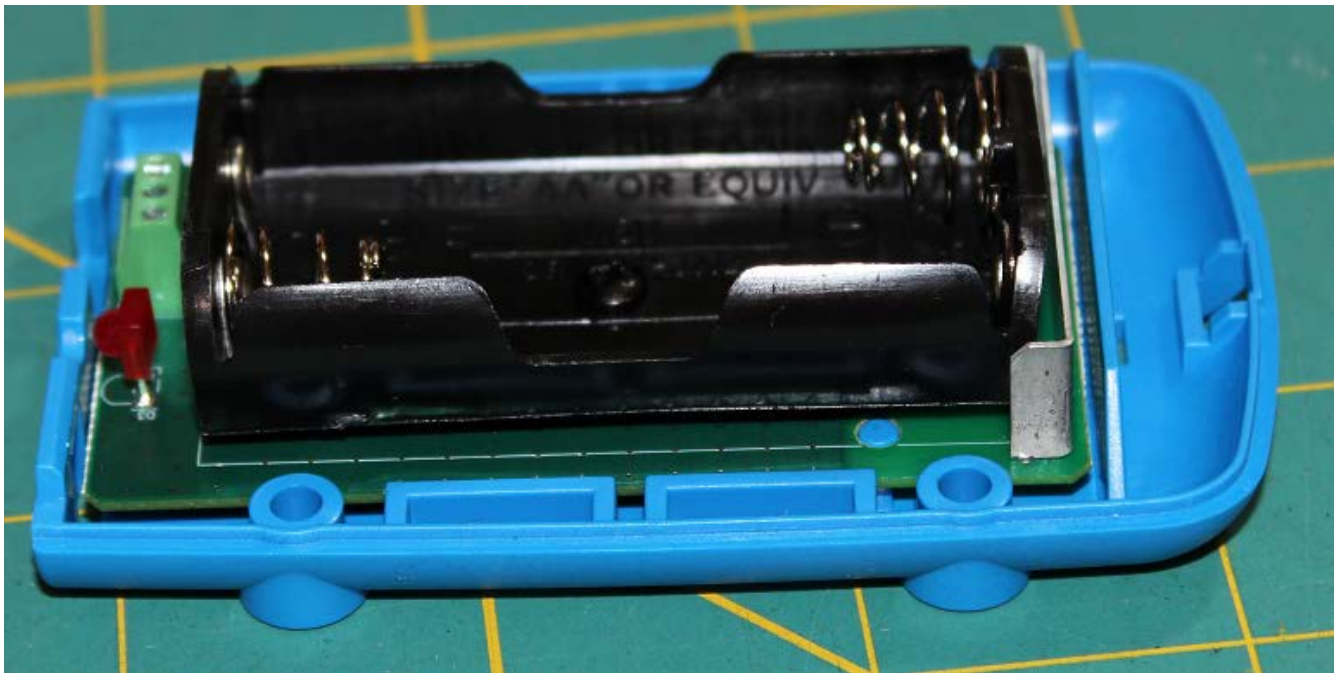


Fig. 6, Front of assembly showing antenna

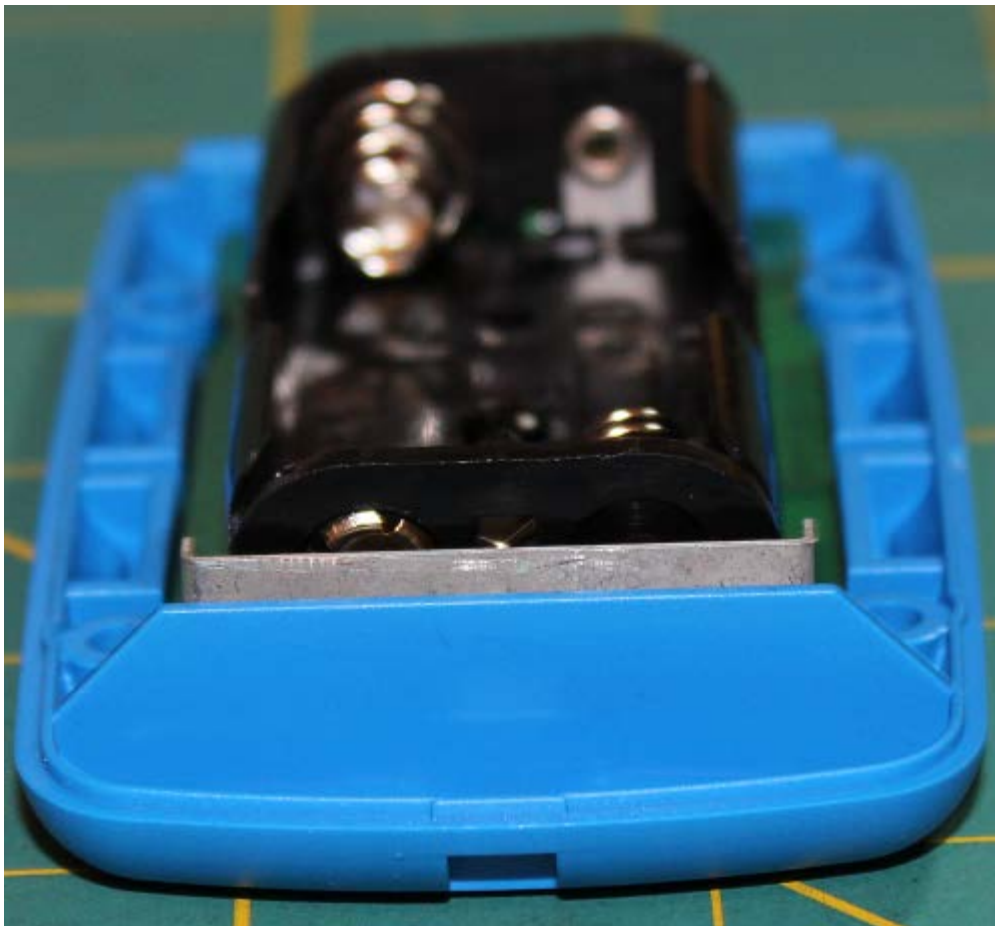


Fig 7. Inside of Battery Cover

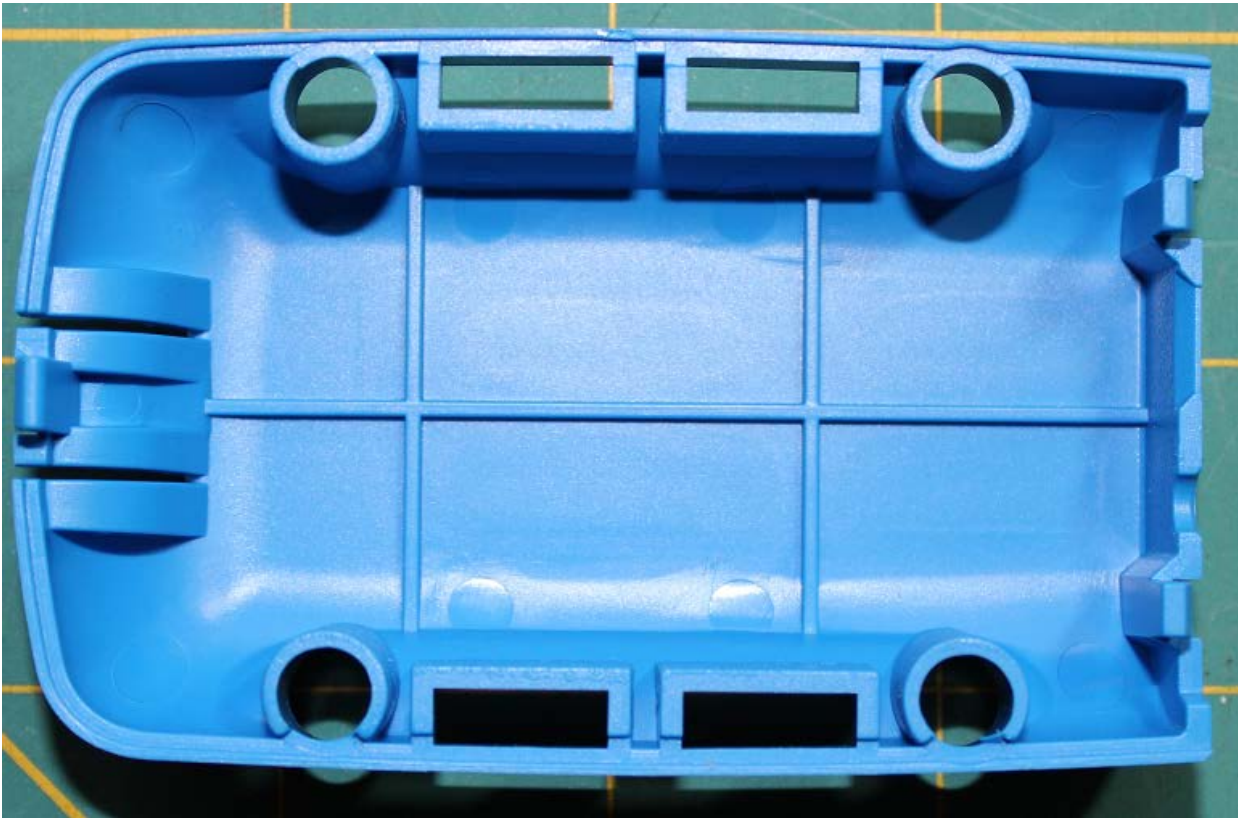


Fig 8. Bottom of enclosure with circuit board and battery compartment removed.

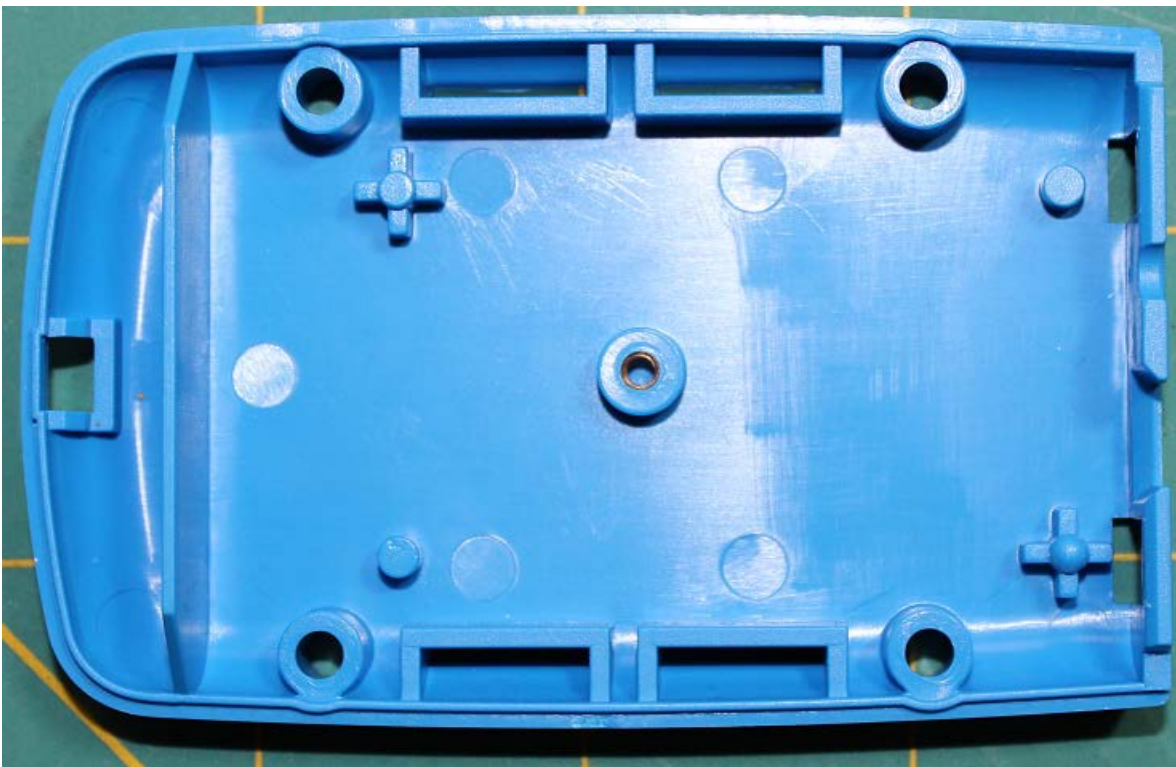


Fig. 9. All components required to assemble the remote wireless sensor.

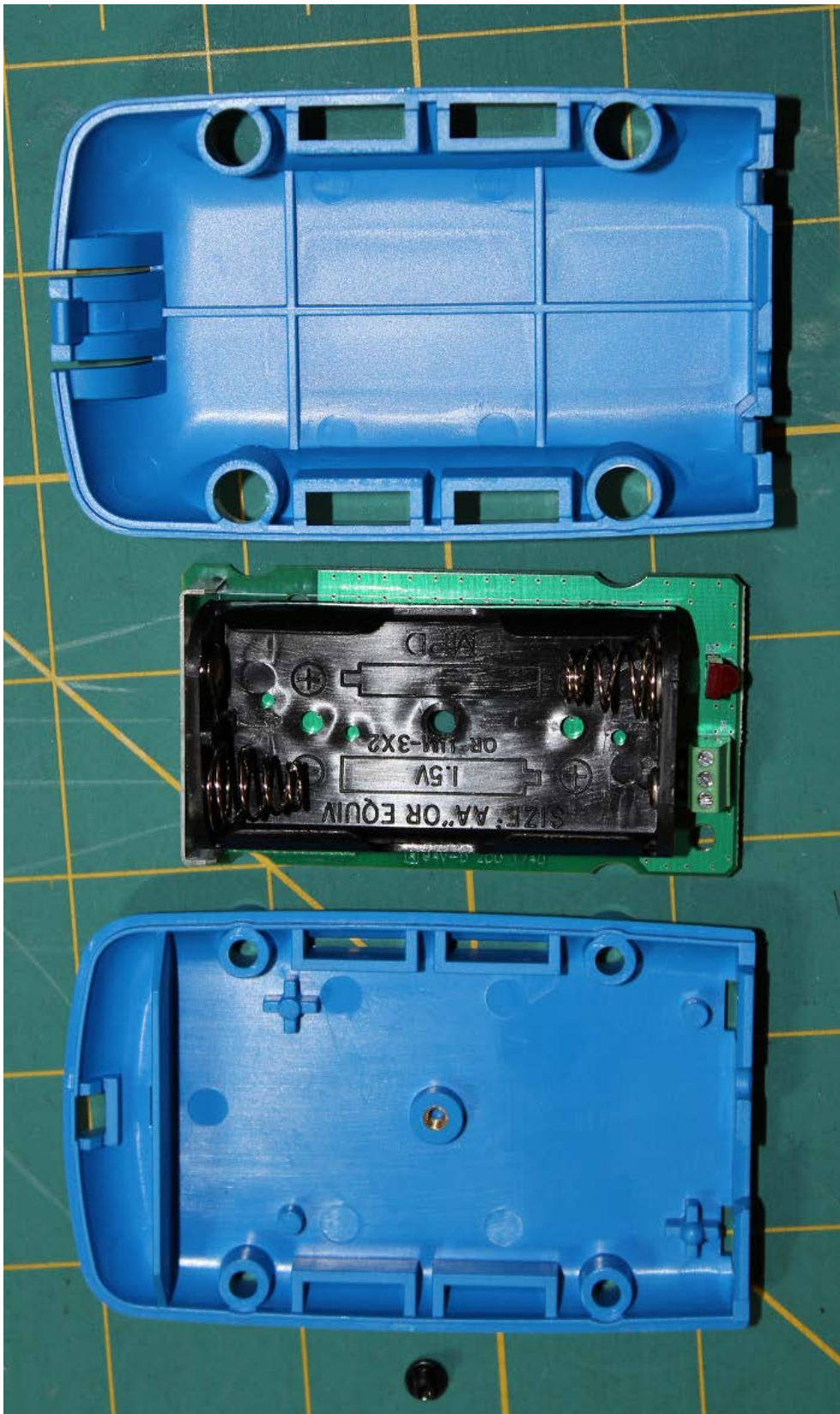
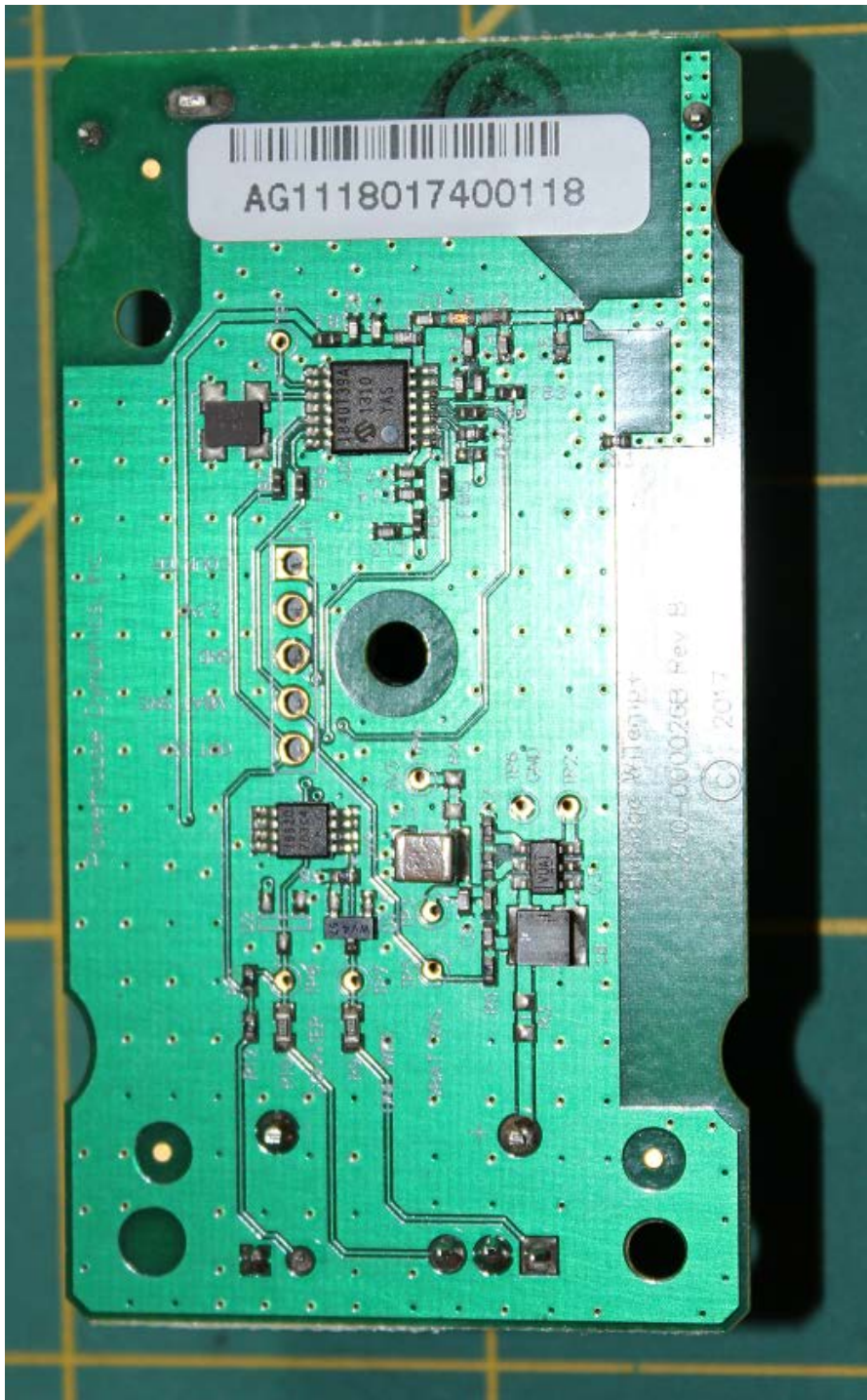


Fig .10 PCB assembly from the top showing through-hole components.



Fig. 11 PCB assembly from the bottom



showing the surface mount components.



Fig. 12 Circuit analysis

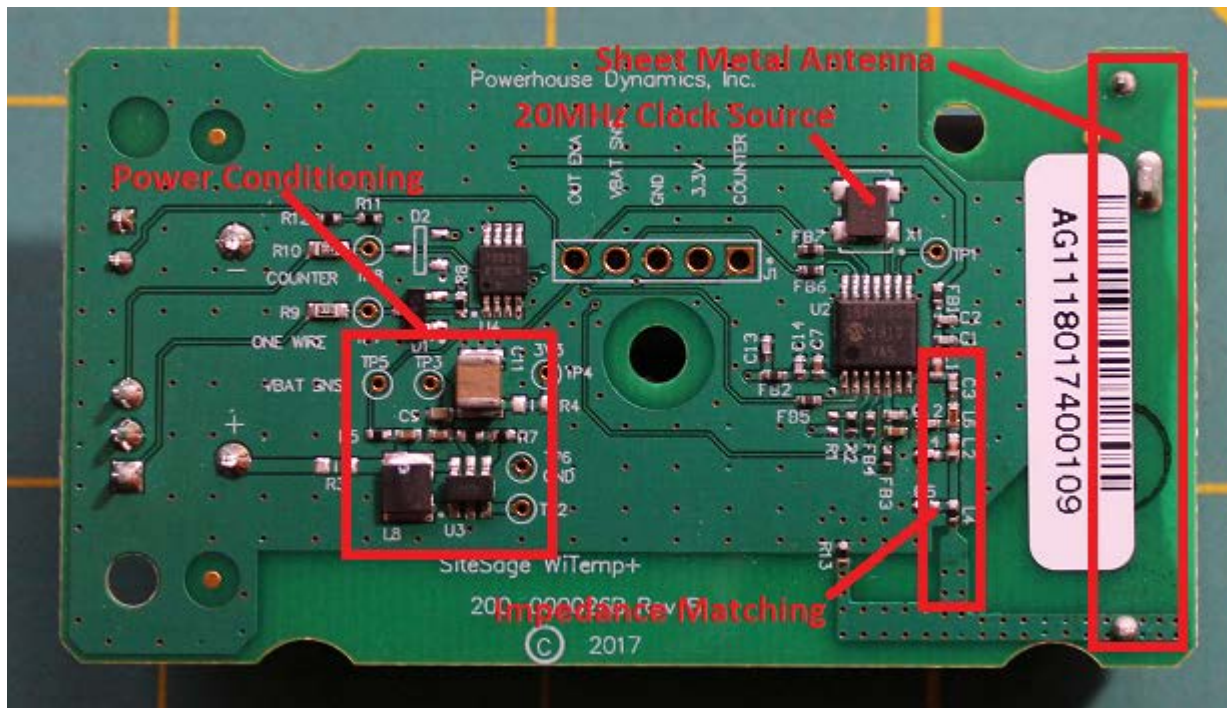


Fig . 13 Assmled sensor, with batteries



Fig 14, Top assembly showing system address label



Fig 15, Bottom assembly showing product label



Alternative IP67 rated Enclosure

Fig 16. Product with battery cover removed.

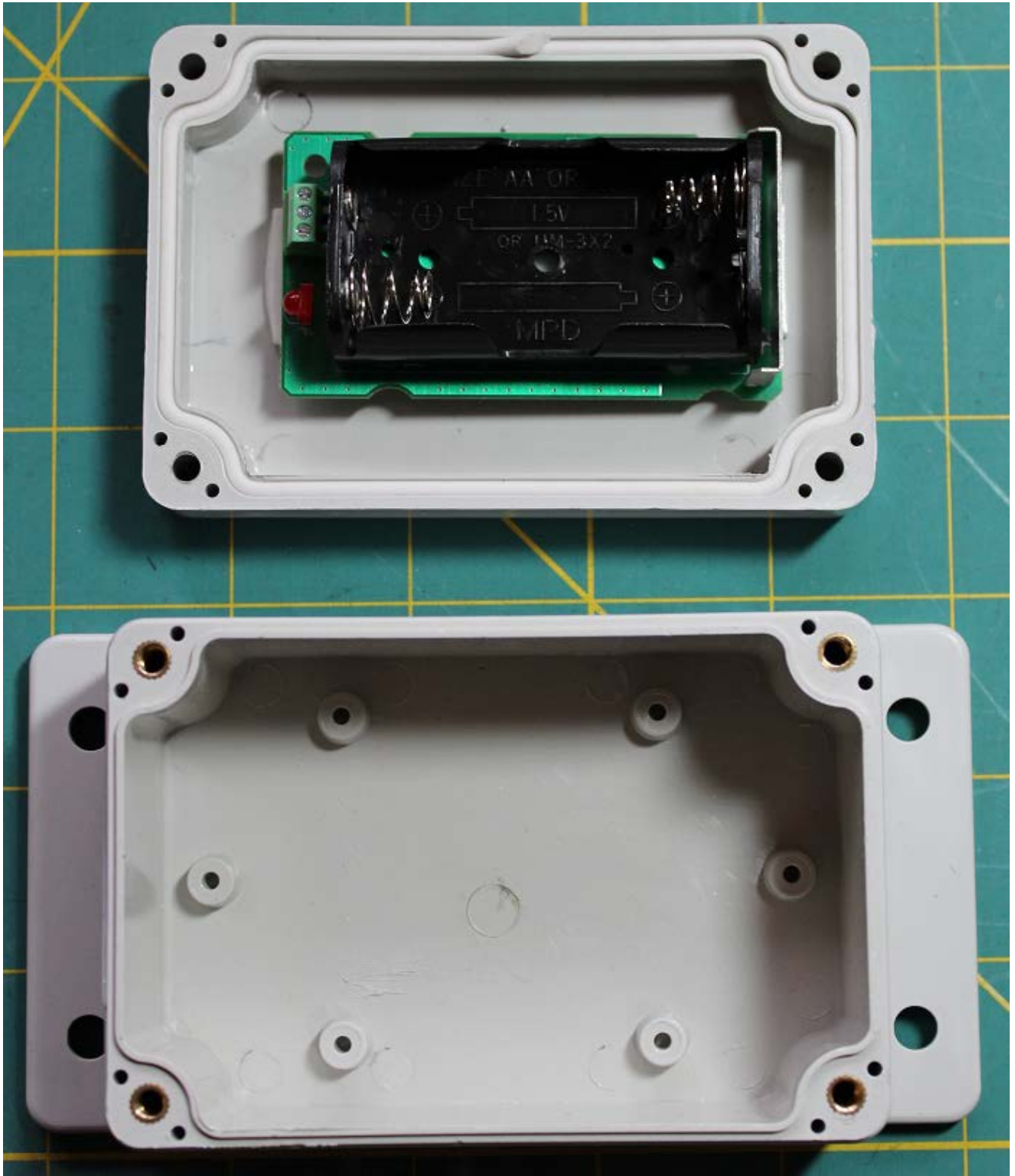


Fig 17. Close up of top assembly



Fig 18. Close up of the Battery Compartment Left-hand side, showing the wire antenna placement.



Fig 19. Rear assembly, showing the terminal block and LED



Fig .20 Right-hand side of the assembly



Fig. 21, Front of assembly showing antenna

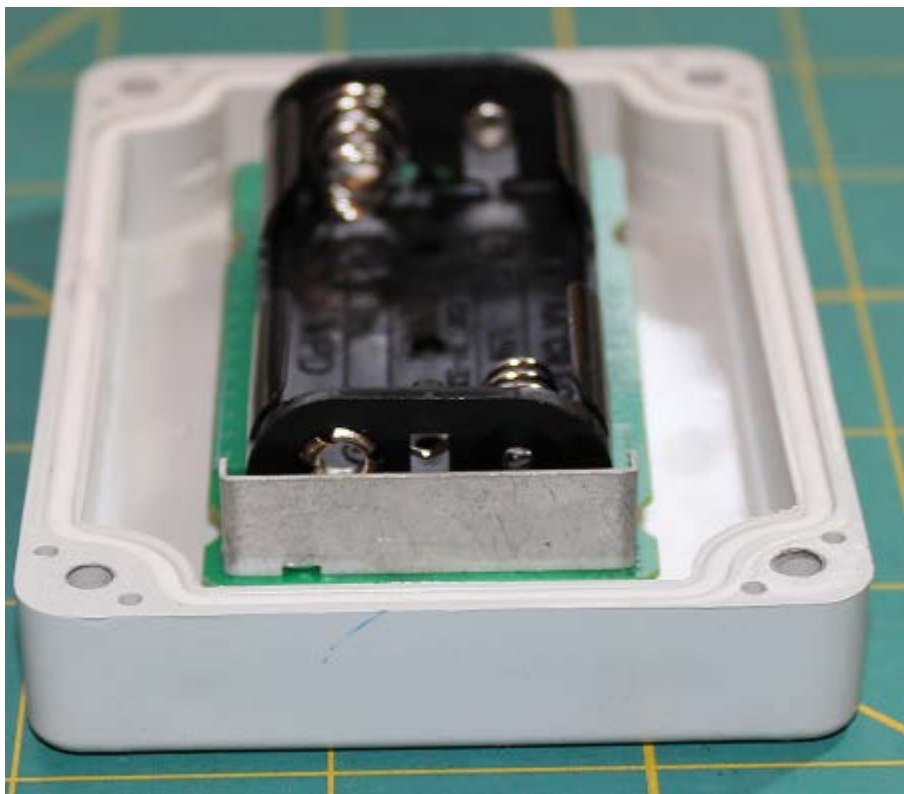


Fig 22. Inside of Top Cover, showing double sided sticky tape mounting mechanism



Fig 23. Inside of Enclosure bottom



Fig 24, Top assembly showing system address label



Fig 25, Bottom assembly showing product label

