



World's Best Metal Detection Technologies

Multi-IO 5F₈ 3F₃ WiStream Bluetooth



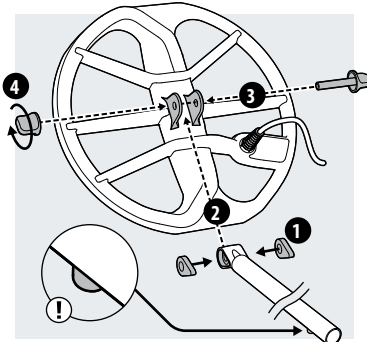
Getting Started Guide
600 | 800

EQUINOX

Assembly | Follow the steps to put together your EQUINOX Series detector

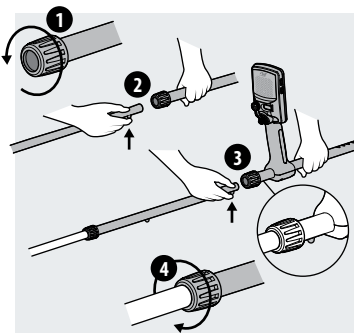
1. Attach coil to lower shaft

1. Insert the two rubber washers into the holes on either side of the yoke.
2. Slide the yoke into the yoke bracket on top of the coil.
- ⓘ Ensure that the spring loaded pin in the lower shaft is underneath.
3. Insert the plastic bolt through the yoke and the yoke bracket.
4. Fasten with the plastic bolt - Do not overtighten.



2. Assemble shafts

1. Loosen the twistlocks by rotating them counter-clockwise.
2. Press the spring loaded pin in the lower shaft and slide it into the middle shaft until the pin reaches the adjustment holes. The pin will click into place.
3. Attach the middle shaft to the upper shaft in the same way.
4. Lock the position of the shafts by rotating twistlocks clockwise.



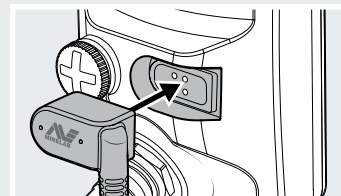
Audio

EQUINOX Series detectors have an external loudspeaker for detecting without headphones. A range of other audio options are available, please refer to the full instruction manual for further information, including wireless options.

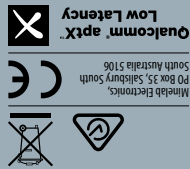
Charge battery

EQUINOX Series detectors have an internal Li-Ion rechargeable battery. Before first use, it is recommended that you fully charge the battery. For fastest charge time, turn the detector off during charging.

1. Connect the magnetic charging cable USB connector to any standard powered USB port.
2. Connect the magnetic charger connector to the socket on the rear of the detector user interface. The Charge Status LED at the top left of the user interface will flash steadily.
3. When charging is complete, the Charge Status LED will remain on.



Minelab®, EQUINOX®, Wi-Stream™, Multi-IO™, 5F₈™ and 3F₃™ are trademarks of Minelab Electronics Pty. Ltd. Images and graphics are for illustration purposes only; product configuration and specifications may vary from those shown. Please refer to the product manual for detailed information. Bluetooth®, Wi-Fi and other trademarks are the property of their respective owners. © 2018 Minelab Electronics Pty. Ltd. All rights reserved.



Australia & Asia Pacific
+61 8 8238 0888
minelab@minelab.com.au

Europe & Russia
+353 21 423 2352
minelab@minelab.ie

Middle East & Africa
+971 4 254 9995
minelab@minelab.ae

North, South & Central America
+1 630 401 8150
minelab@minelab.com

WARRANTY TERMS
Please refer to www.minelab.com/warranty-conditions for full warranty terms and conditions. Register your product warranty online at register.minelab.com

COMPLIANCE
Information to the User (FCC Part 15.105)
Operation is subject to the following two conditions: (1) this device may not cause harmful interference, and (2) this device must accept any interference received, including interference that may cause undesired operation.
NOTE: Class B Devices
This equipment has been tested and found to comply with the limits for a Class B digital device, pursuant to part 15 of the FCC Rules. These limits are designed to provide reasonable protection against harmful interference in a residential installation.
This equipment generates, uses and can radiate radio frequency energy and, if not installed and used in accordance with the instructions, may cause harmful interference to radio communications. However, there is no guarantee that interference will not occur in a particular installation. If this equipment does cause harmful interference to radio or television reception, which can be determined by turning the equipment off and on, the user is encouraged to try to correct the interference by one or more of the following measures:
• Reorient or relocate the receiving antenna
• Increase the separation between the equipment and receiver
• Connect the equipment into an outlet on a circuit different from that to which the receiver is connected
• Consult the dealer or an experienced radio/TV technician for help
Warning: Any changes or modifications not expressly approved by Minelab Electronics could void the user's authority to operate this equipment.

For complete product specification and complete operational guidance, read the full length user manual at www.minelab.com.

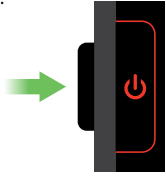
EQUINOX 800		EQUINOX 600	
Detect Modes	Park, Field, Beach, Gold	Park, Field, Beach	6 × custom search profiles
Standard Headphones	5, 10, 15, Multi	3.5mm / 1/8" (32 ohms)	Bluetooth®/ aptX™ Low Latency
Waterproof	Yes, WM 08 not included	Yes, WM 08 not included	Yes, WM 08 included
Battery Life (approx.)	12 hours	12 hours	12 hours
Standard Coil	EOX 11 Double-D smart coil	EOX 11 Double-D smart coil	

Quick Start | 4 easy steps to get started.

Before first use, it is recommended that you fully charge the battery.

1. Turn on

Press Power button on the side of the user interface.



2. Select a Detect Mode

Select the optimum Detect Mode Search Profile for your detecting location. (EQUINOX 800 shown).

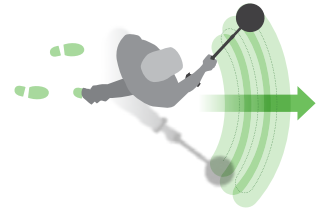


3. Noise Cancel

Select Noise Cancel from the Settings Menu, then press to initiate automatic Noise Cancel. This will take approximately 8 seconds to complete.



4. Begin detecting!



Detect Modes | Each Detect Mode has two adjustable Search Profiles with unique default settings.



Park

Great performance in high-trash recreational environments.

Using Multi in this mode is the most versatile for general coin and treasure detecting.



Field

Ideal for detecting fine jewellery and artefacts.

Using Multi in this mode helps the specialist find the widest range of target sizes.



Beach

Excels in dry sand, wet sand, and underwater.

Beach mode operates in Multi only, and is designed for typical in beach conditions.



Gold*

Perfect for gold nugget prospecting.

Gold mode operates high single frequencies of 20 or 40 kHz, optimum for gold targets.

The default Search Profile 1 setting in each Detect Mode has been optimised for easy detection of a wide range of targets.

Save your favourite detecting settings in Profile 1 or 2 in each Detect Mode once you are familiar with the detector.

User Interface | Adjust and view your detector settings.

This asterisk appears throughout the guide, indicating features only available on the EQUINOX 800 model.

Power

A short press of the Power button turns the detector On and Off. A long press (5 seconds) restores the detector to factory settings.

Backlight

Selects the backlight brightness* or turn the backlight On and Off. The Backlight icon will appear when the Backlight is on.

Sensitivity Indicator
Indicates approximate sensitivity level (25 levels)
Press and from the detect screen to adjust sensitivity.

Detect Mode

Selects Detect Modes: Park, Field, Beach, and Gold*
Each Detect Mode has 2 customisable Search Profiles.

A short press of the Detect Mode button scrolls through the Detect Modes.

Press and hold for 5 seconds to restore factory preset for the active Search Profile.

Detect Mode



Search Profiles

Detector Settings Menu

A short press of the Settings button accesses and scrolls through the Detector Settings menu.

A long press of the Settings button when in the Settings Menu accesses Advanced Settings if available.

Press and with a setting selected to adjust its value.

Setting



Advanced Setting

Setting

Noise Cancel
Auto | Manual*

Ground Balance
Auto | Manual

Volume Adjust
0 to 25

Threshold Level
0 to 25

Target Tone
1, 2, 5, and 50

Accept/Reject
50 Segment resolution

Recovery Speed
3 Levels | 8 Levels*

Advanced Setting

Tone Volume
Ferrous | Non-ferrous*

Threshold Pitch*
0 to 25

Tone Pitch
Ferrous | Non-ferrous*

Tone Break
Ferrous | Non-ferrous*

All-Metal

Press the All-Metal button to turn the selected discrimination pattern on and off for target confirmation.



Battery Status

LED indicates charge status during charging. You can go detecting as usual when connected to a USB power bank, just like a spare battery.

100%

>70%

30% - 70%

<5% battery icon"/> <5%

Flashing: Charging
 Constant On: Charged

Charge the battery when the battery icon begins to flash.



Wireless Audio

A short press of the Wireless button turns Wireless on and off. A long press of the Wireless button pairs wireless audio devices.

Any Bluetooth headphones

aptX™ Low Latency headphones

WM 08 Wireless Audio Module

Up to 4 wireless devices can be paired and in use simultaneously.

E.g. 1 device paired

E.g. 3 devices paired

Depth Indicator

Indicates the estimated depth of a detected target. (5 levels)

Tracking

Indicates that Tracking ground balance is active.

User Profile*

A long press of the User Profile button saves the current detector settings.

A short press of the User Profile button turns the saved User Profile on or off.

Notch Discrimination

High resolution 50-segment discrimination scale for accurate, stable target identification.

When a target is detected, press the Accept/Reject button to instantly accept or reject it.

You can also create discrimination patterns via the Settings Menu.

Press and to navigate to a segment, then press the Accept/Reject button to accept or reject it.

-5

Target IDs -9 to 0 indicate ferrous targets, e.g. -5.

32

Target IDs 1 to 40 indicate non-ferrous targets, e.g. 32.

Frequency

Displays the current operating Frequency.

Press the Frequency button any time to scroll through the available operating frequencies for the active Search Profile.

15 kHz

Displays the current selected single frequency in kHz: 5, 10, 15, 20, or 40.

Multi

Displays a rectangle when operating in Simultaneous Multi-Frequency.

Pinpoint

Assists in locating the exact position of a target prior to recovery.



Press the Pinpoint/Detect button to enable pinpoint mode. Press again to return to the Detect Screen.