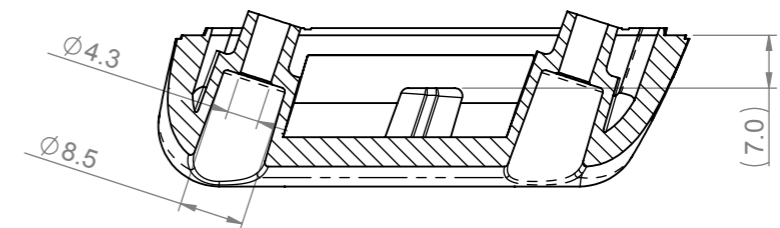
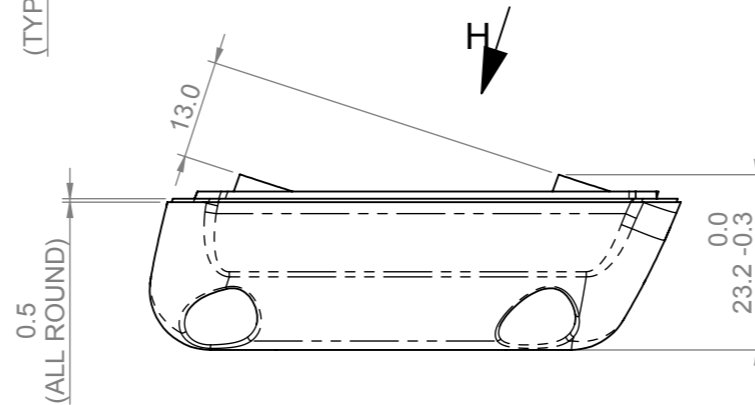
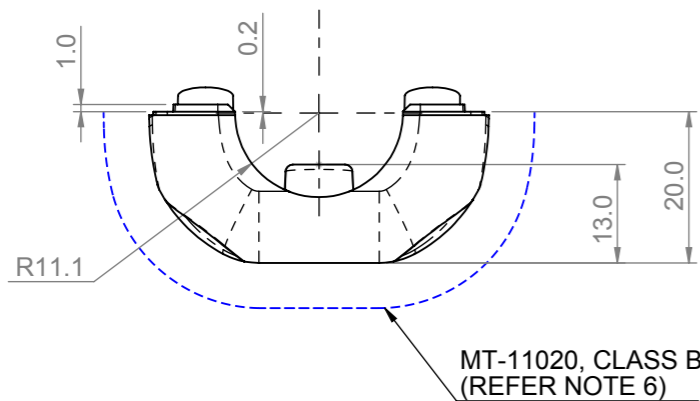
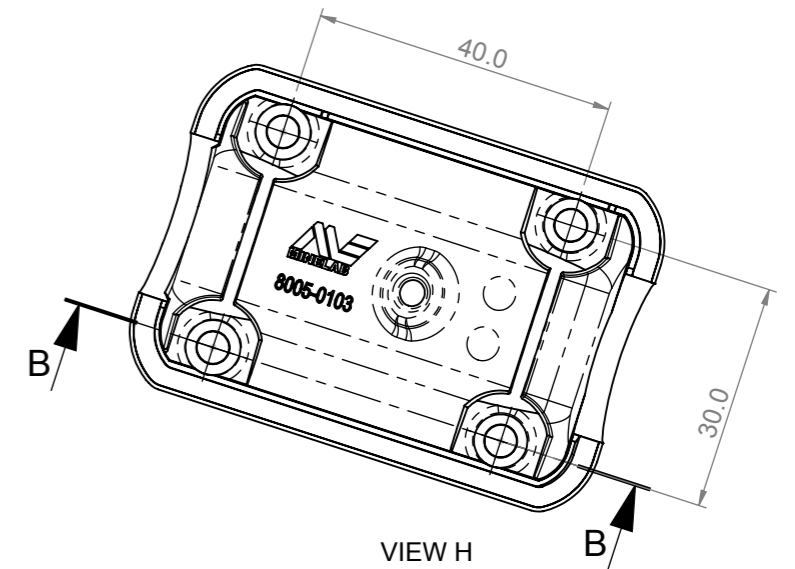
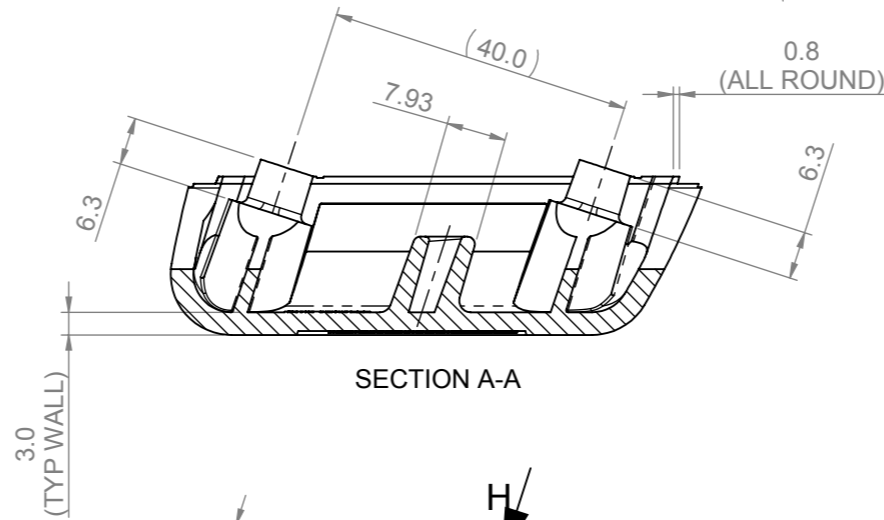
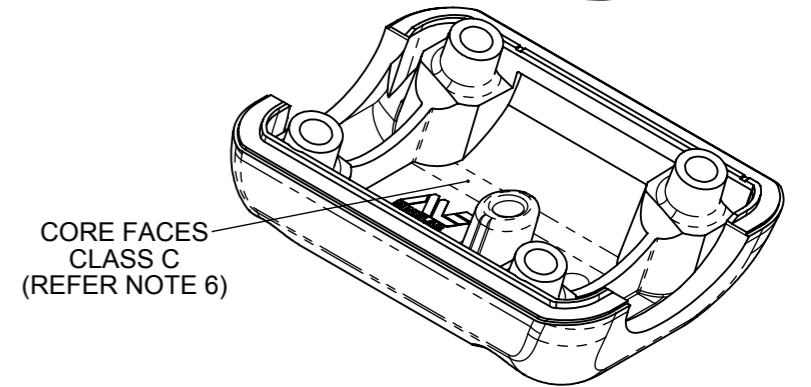
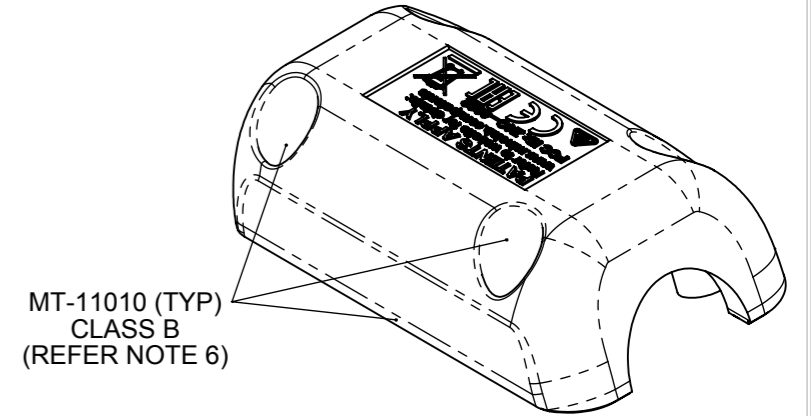
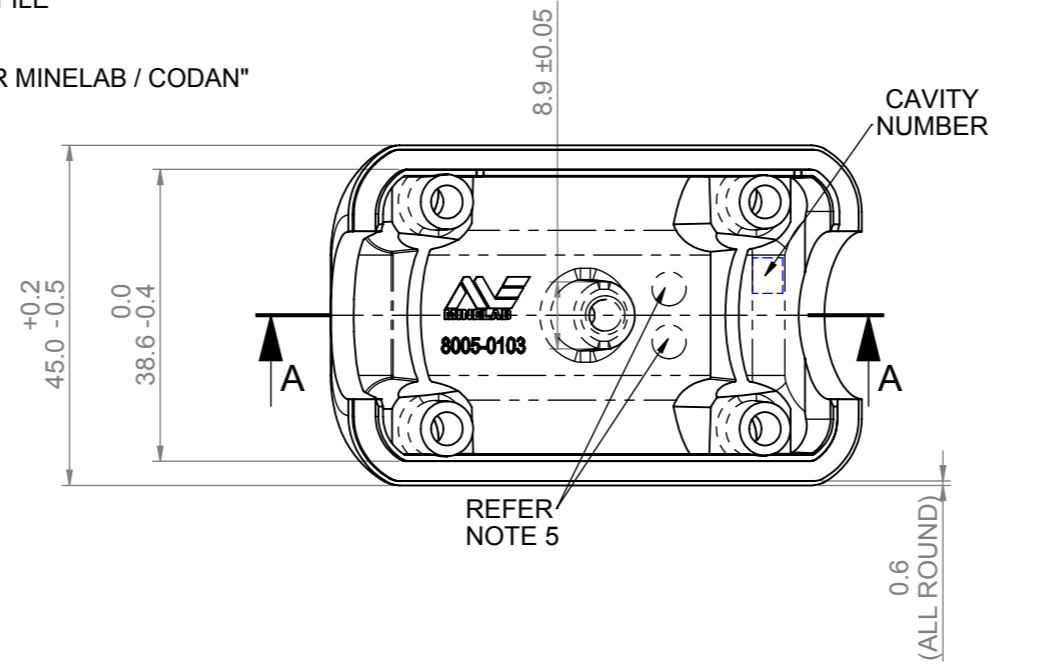
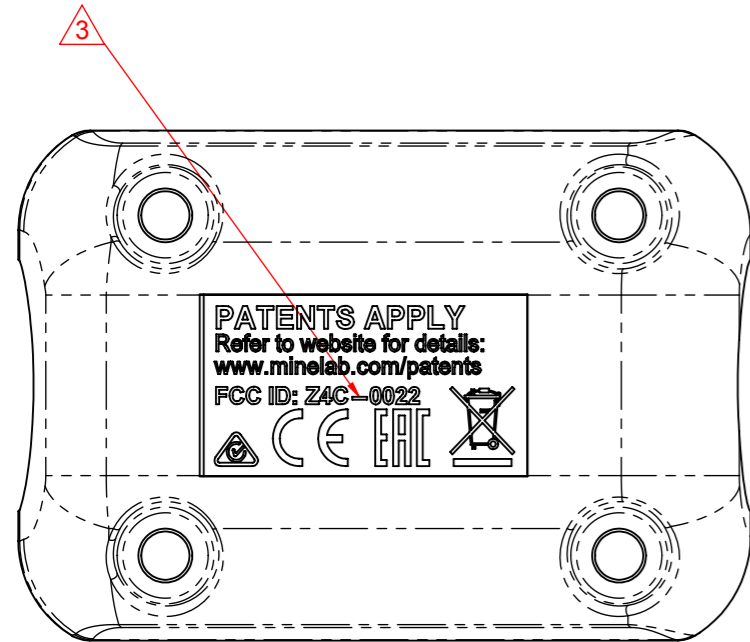


DO NOT SCALE		DIMENSIONS IN MILLIMETRES UNLESS OTHERWISE STATED		GENERAL TOLERANCES				DESCRIPTION				DRAWING NUMBER		REV				
				0 DECIMAL (0) ±0.5		2 DECIMAL (0.00) ±0.1		CLAMP, HANDLE SHAFT EQX				8005-0103		3				
				1 DECIMALS (0.0) ±0.2		ANGLES ±0.5°												
REV	REF #	DESCRIPTION			DRN	DATE	CKD	DATE	APP	DATE	PROJECT	SCALE	SHEET	SIZE	MATERIAL			
2	D.40022	CHANGE COLOUR TO BLACK (WAS GREY). AMEND TOLERANCES TO MATCH OTS.			LG	3/10/17	DNP	4/10/17	BrS	4/10/17	D.40022	1:1	1 OF 1	A3	ZYTEL 70G25HSLR NC010 (25% GF PA66) (UV STABILISED), OR MINELAB APPROVED EQUIV.			
3	D.40022	REMOVE SPACE BETWEEN "Z4C", "0022" AND HYPHEN.			LG	10/10/17	DNP	10/10/17	NS	10/10/17	UNSPECIFIED RADII	0.5mm	UNSPECIFIED DRAFT	1°	COLOUR	BLACK		
											COPYRIGHT MINELAB ELECTRONICS © 2016		2 SECOND AVE MAWSON LAKES SA 5095 Ph: +61 8 8238 0888		FINISH		MT-11020, MT-11010 / (POLISHED ON CORE)	
											MINELAB				TOOL No.		MLI-0313 ASSET No.	
															REF. FILE		8005-0103-3 Clamp Handle Shaft EQX	

NOTES:

1. DEVIATIONS FROM INITIAL APPROVED SAMPLE MUST BE SUBMITTED FOR APPROVAL
2. ALL PARTS & PROCESSES TO BE RoHS COMPLIANT
3. PART TO BE FREE OF FLASH THAT MAY IMPEDE FUNCTION, HANDLING OR APPEARANCE
4. FOR UNDIMENSIONED PART GEOMETRY DATA REFER TO CAD DATA FILE 8005-0103-3 Clamp Handle Shaft EQX
5. ADJUST MOLD DATE DIALS EVERY RUN (INCLUDING TRIALS)
6. REFER TO DOCUMENT "01-02044 COSMETIC QUALITY STANDARD FOR MINELAB / CODAN"
7. TOOL TO BE MARKED / ENGRAVED AS PER FOLLOWING:
PROPERTY OF CODAN LIMITED
CREATION DATE ; YYYY/MM/DD
TOOL NUMBER : MLI-0313
PART NUMBER : 8005-0103



Classification: Minelab Confidential