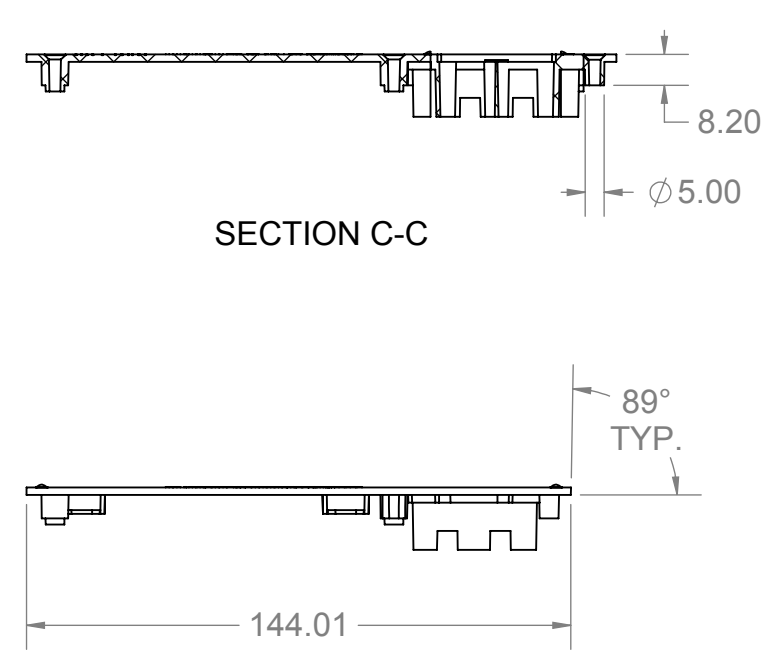
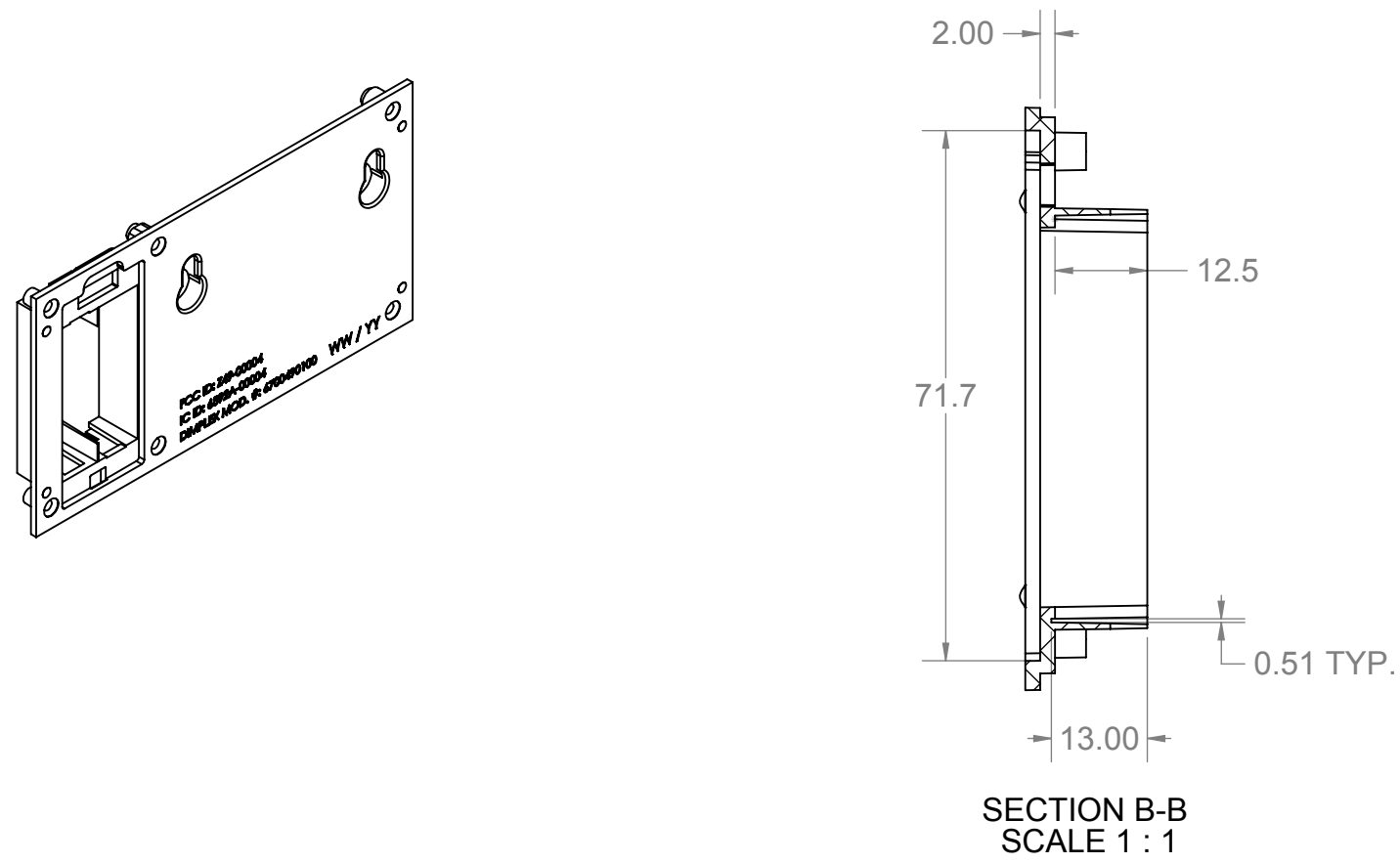
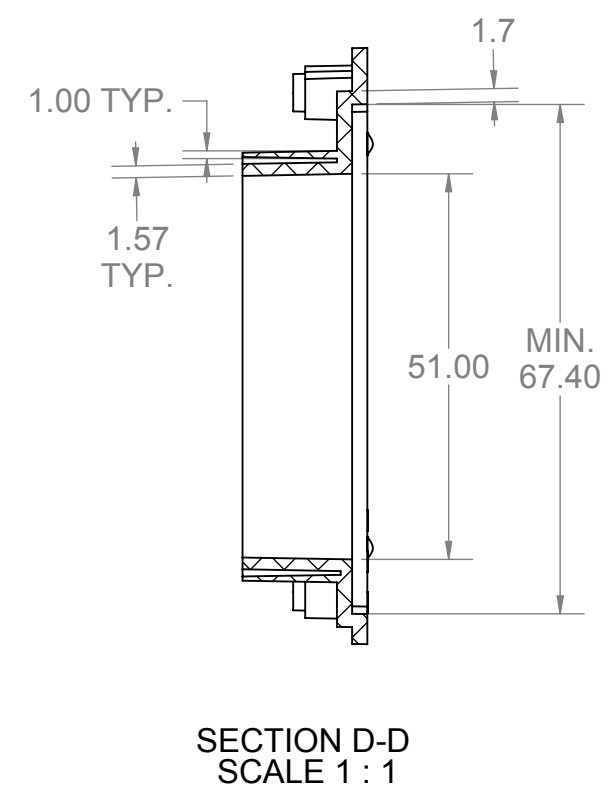
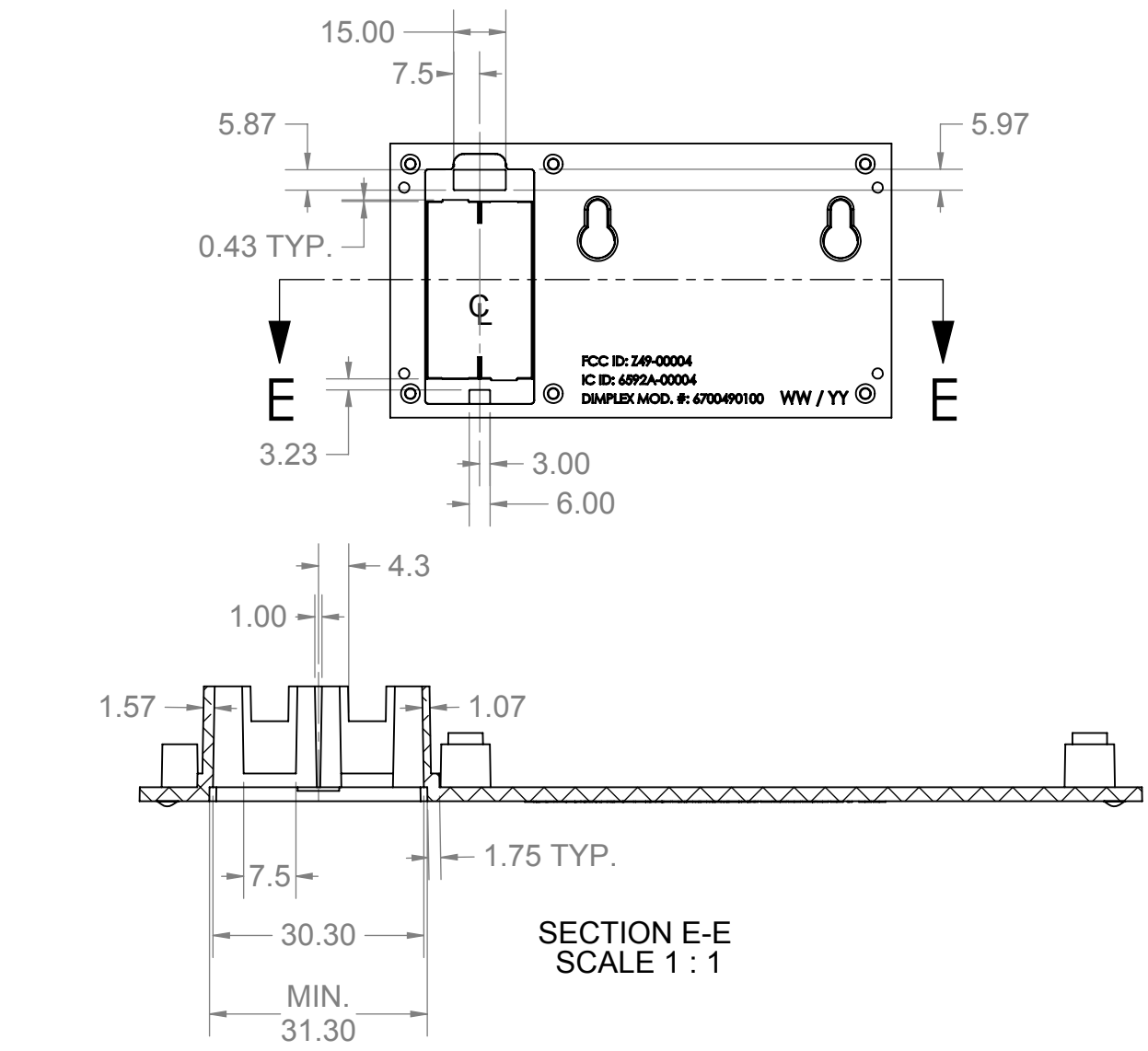
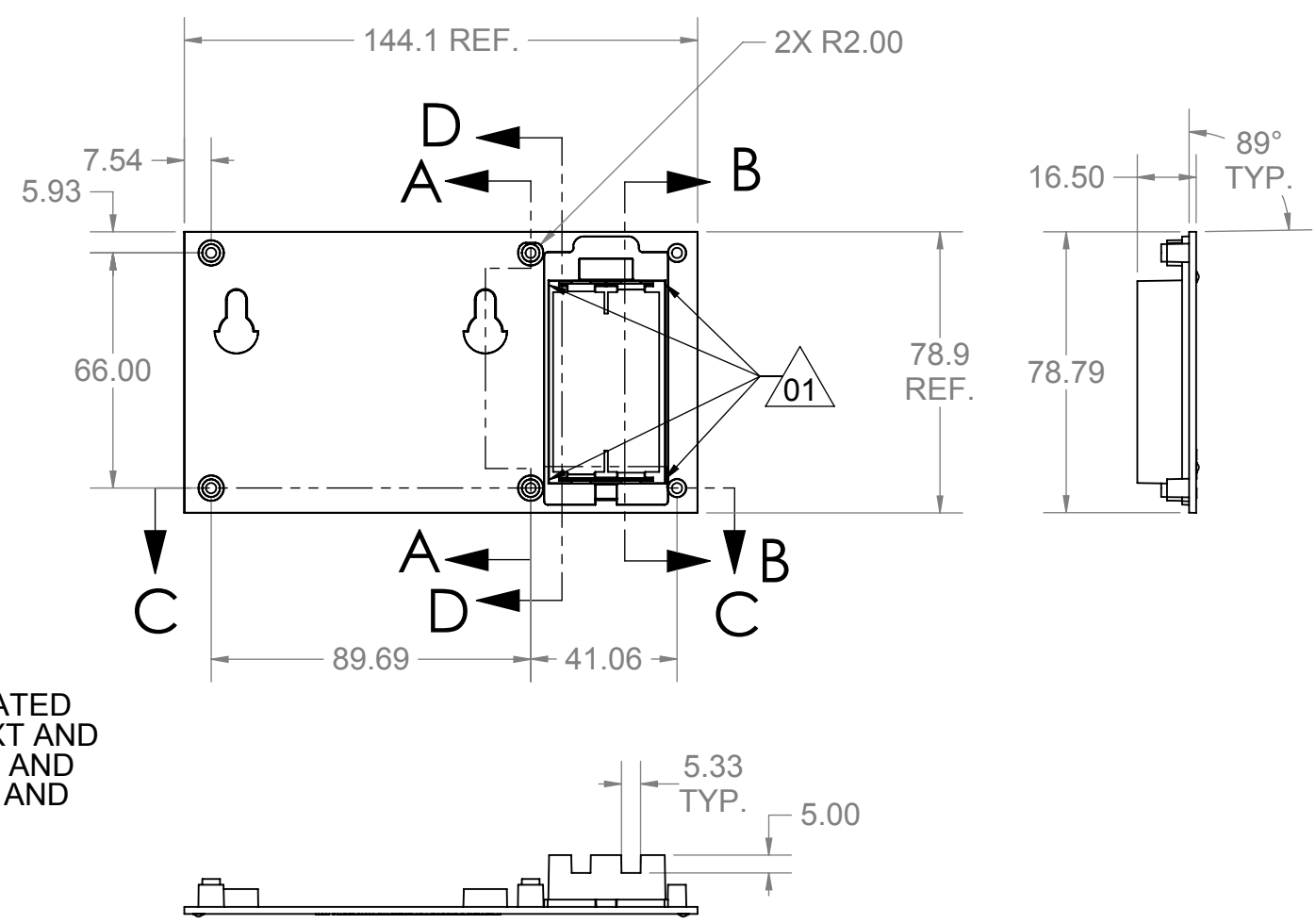
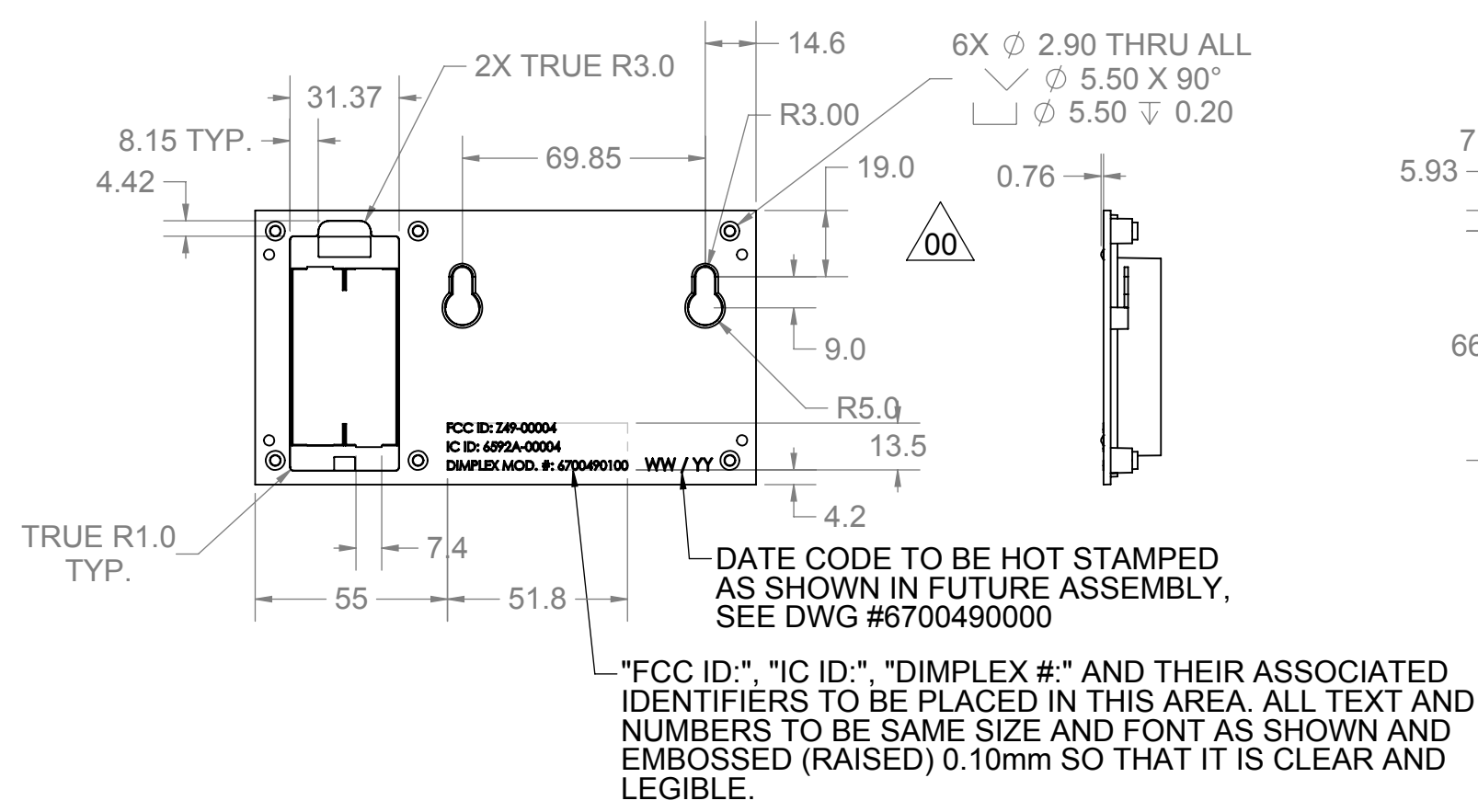
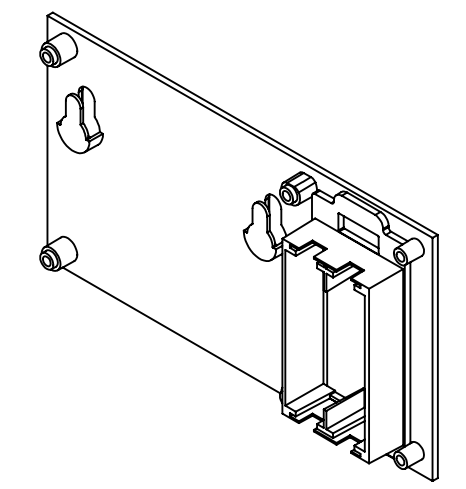


REVISIONS				
REV.	DESCRIPTION	DATE	PCN	INL
00	INITIAL RELEASE FOR PRODUCTION; RELOCATED KEY HOLE FEATURES; 19.0 WAS 14.0; MOVED DOWN 5mm; FCC/IC/DNA #'S MOVED DOWN 1mm	MAY 31, 2012	13425	D.C.
01	ADDED MATERIAL AT FOUR POINTS AROUND BATTERY TERMINAL INSERTION POINTS TO ADD STRENGTH	10JL12	13425	JAD
02	ADDED FCC AND IC NUMBERS	05SE12		JAD



02



- NOTES:**
- PART #0441290100 AS SHOWN.
  - ALL DIMENSIONS TO OUTSIDE EDGES UNLESS OTHERWISE SPECIFIED.
  - MINIMUM DRAFT ANGLE TO BE 1° UNLESS OTHERWISE SPECIFIED.
  - ANY DIMENSIONS NOT SHOWN, PLEASE REFER TO SOLID MODEL PROVIDED BY DIMPLEX N.A. OR ASK.
  - PART TO BE FREE OF SINK MARKS, FLOW LINES, FLASH, DISCOLOURATIONS AND SURFACE INCONSISTANCIES.
  - ALL EDGES TO BE FREE OF BURRS, SHARP EDGES AND IMPERFECTIONS.
  - MATERIAL: UV STABLE ABS (or PC/ABS), MIN. 65C CONTINUOUS-USE RATED.
  - COLOUR: WHITE (TO MATCH COLOUR OF DISPLAY COVER, #0440640000); TO BE APPROVED BY DIMPLEX N.A. ENGINEERING & QUALITY DEPARTMENT)
  - TEXTURE: SMOOTH (TO BE APPROVED BY DIMPLEX N.A. ENGINEERING & QUALITY DEPARTMENT)

UNLESS OTHERWISE SPECIFIED		MATERIAL: SEE NOTES		TITLE: <b>BACK PANEL</b>		REV.: <b>02</b>
No sharp edges on all parts. ALL DIM. IN MILLIMETERS DO NOT SCALE FLAT IS FOR REFERENCE ONLY		FINISH: SEE NOTES		WHERE USED: 6700490000		
TOLERANCES:		X.XX ±0.15	X.X ±0.8	DR BY: D.C.	FEB 10, 2012	DWG NO.: <b>0441290000</b>
		X ±3	Holes: ±0.15	CHK'D: J.S.	JUNE 5, 2012	SHEET: <b>1 OF 1</b>
		ANGLES: ± 2°		SCALE: 1:2	DATE	SIZE: <b>C</b>
C THIS SYMBOL REPRESENTS A CONTROL DIMENSION. CONTROL DIMENSIONS ARE CONSIDERED TO BE A GOOD INDICATOR OF WHETHER A MANUFACTURING PROCESS IS IN CONTROL. THESE DIM. MUST HAVE A MIN. Cpk OF 1.33 FOR A SAMPLE 31 CONSECUTIVE PIECES.		This drawing and the design of this article represented herein, are the exclusive property of Dimplex North America Limited and are provided strictly on a confidential basis. The drawing and design shall be used only for the purposes for which they have been provided and shall not be produced, reproduced, altered, used, published or disclosed to others without the prior written consent of Dimplex North America Limited.				



FCC ID: Z49-00004

IC ID: 6592A-00004

DIMPLEX #: 6700490100