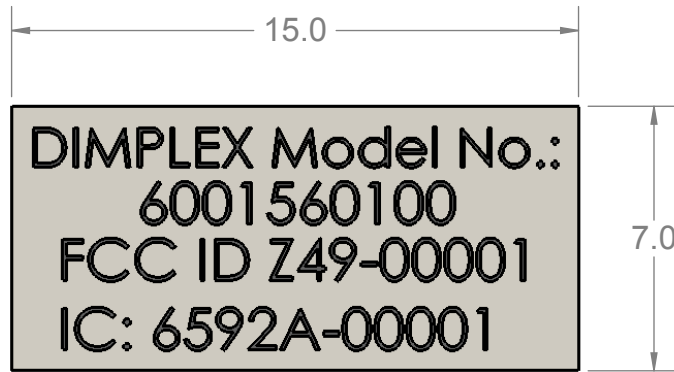


REVISIONS				
REV.	DESCRIPTION	DATE	PCN	IN'L
00	INITIAL RELEASE FOR PRODUCTION	OCT 31, 2011	13052	D.C

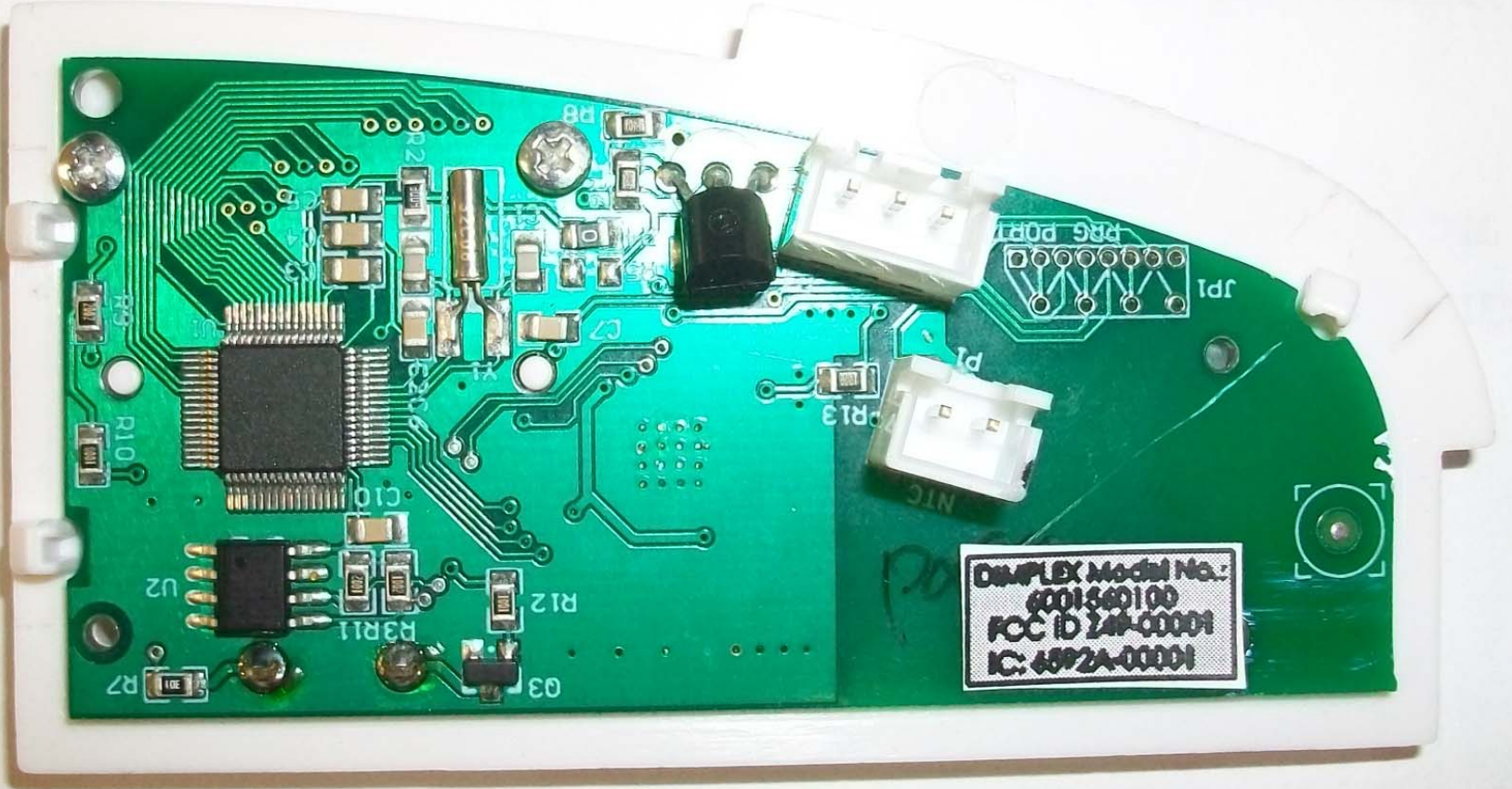


NOTES:

1. PART #7118110100 AS SHOWN.
2. MATERIAL: SELF ADHESIVE GLOSS COATED PAPER, MINIMUM 0.05mm THICK.
3. FINISH: WHITE BACKGROUND WITH BLACK IDELIBLE INK.
4. ALL TEXT AND GRAPHICS MUST BE CLEARLY LEGIBLE.
5. PRINTED LABELS MUST PASS RUB TEST UNDER ASTM D5264-98 USING A 4 LB/1.81 Kg WEIGHT AND SUBJECTED TO 100 STROKES (STROKE = BACK AND FORTH CYCLE).
6. DIMENSIONS TO OUTSIDE EDGES UNLESS OTHERWISE SPECIFIED.

UNLESS OTHERWISE SPECIFIED No sharp edges on all parts. ALL DIM. IN MILLIMETERS DO NOT SCALE FLAT IS FOR REFERENCE ONLY TOLERANCES: X.XX ±0.15 X.X ±0.8 X ±3 HOLES: ±0.15 ANGLES: ± 2° C THIS SYMBOL REPRESENTS A CONTROL DIMENSION. CONTROL DIMENSIONS ARE CONSIDERED TO BE A GOOD INDICATOR OF WHETHER A MANUFACTURING PROCESS IS IN CONTROL. THESE DIM. MUST HAVE A MIN. Cpk OF 1.33 FOR A SAMPLE 31 CONSECUTIVE PIECES.	MATERIAL: GLOSS COATED PAPER		TITLE: LABEL, FCC ID AND IC, 6001560100		REV.: 00
	FINISH: WHITE WITH BLACK PRINTING				DWG NO.: 7118110000
	WHERE USED: DPCRWS		DR BY: D.C.	OCT 31, 2011	
	CHK'D: ~		DATE		
SCALE: 5:1					
<small>This drawing and the design of this article represented herein, are the exclusive property of Dimplex North America Limited and are provided strictly on a confidential basis. The drawing and design shall be used only for the purposes for which they have been provided and shall not be produced, reproduced, altered, used, published or disclosed to others without the prior written consent of Dimplex North America Limited.</small>					

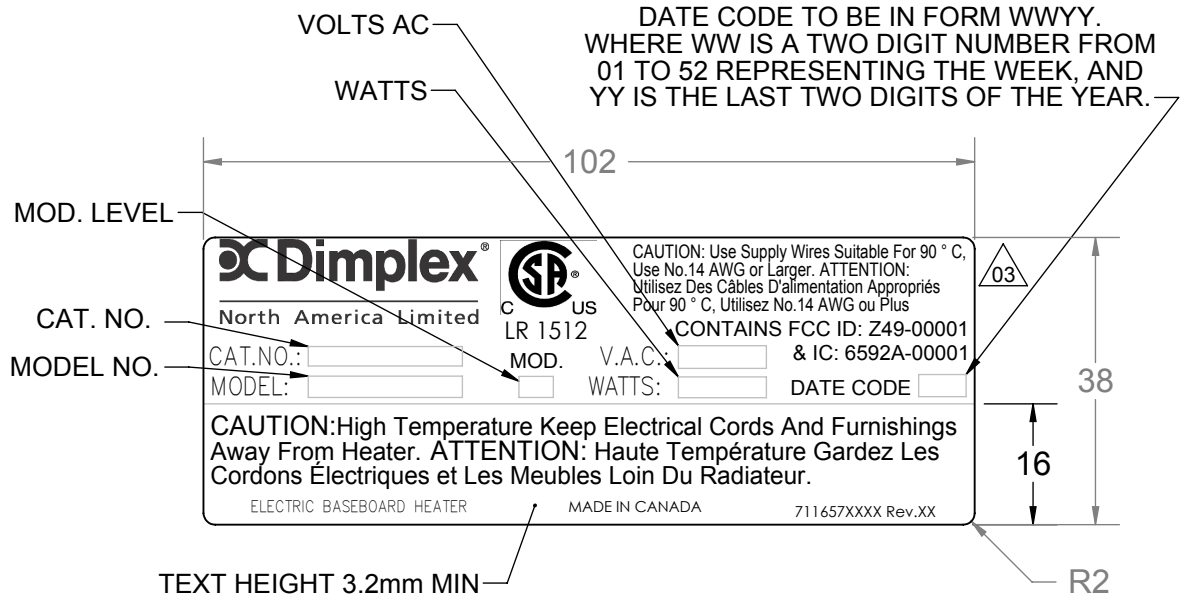
10/31/2011



DMPLEX Model No.:
601560100
FCC ID: 2AR-00001
IC: 4592A-00001

REVISIONS				
REV.	DESCRIPTION	DATE	PCN	IN'L
00	INITIAL RELEASE FOR PROTOTYPING AND QUOTATION	12JL11	12153	JAD
01	ADDED FCC IC NUMBERS	14OCT12	13032	JAD
02	UPDATED MOD. LEVEL FROM "-" TO "A"	17/10/2011	13032	D.C.
03	UPDATED FCC ID AND IC NUMBERS, WAS FCC ID: 6592A & IC Z4900001	18/10/2011	13041	D.C.

TABLE NO.	CAT. NO.	MODEL NO.	WATTS	VOLTS AC	MOD. LEVEL
7117855200	PC602551	6001610565	2500		A
7117855100	PC6025W51	6001610560			A
7117855000	PC502051	6001610555	2000		A
7117854900	PC5020W51	6001610550			A
7117854800	PC401551	6001610545	1500		A
7117854700	PC4015W51	6001610540			A
7117854600	PC351251	6001610535	1250		A
7117854500	PC3512W51	6001610530			A
7117854400	PC301051	6001610525	1000		A
7117854300	PC3010W51	6001610520			A
7117854200	PC250751	6001610515	750		A
7117854100	PC2507W51	6001610510			A
7117854000	PC200551	6001610505	500		A
7117853900	PC2005W51	6001610500			A
7117853800	PC602531	6001610365	2500		A
7117853700	PC6025W31	6001610360			A
7117853600	PC502031	6001610355	2000		A
7117853500	PC5020W31	6001610350			A
7117853400	PC401531	6001610345	1500		A
7117853300	PC4015W31	6001610340			A
7117853200	PC351231	6001610335	1250		A
7117853100	PC3512W31	6001610330			A
7117853000	PC301031	6001610325	1000		A
7117852900	PC3010W31	6001610320			A
7117852800	PC250731	6001610315	750		A
7117852700	PC2507W31	6001610310			A
7117852600	PC200531	6001610305	500		A
7117852500	PC2005W31	6001610300			A
7117852400	PC602521	6001610265	2500		A
7117852300	PC6025W21	6001610260			A
7117852200	PC502021	6001610255	2000		A
7117852100	PC5020W21	6001610250			A
7117852000	PC401521	6001610245	1500		A
7117851900	PC4015W21	6001610240			A
7117851800	PC351221	6001610235	1250		A
7117851700	PC3512W21	6001610230			A
7117851600	PC301021	6001610225	1000		A
7117851500	PC3010W21	6001610220			A
7117851400	PC250721	6001610215	750		A
7117851300	PC2507W21	6001610210			A
7117851200	PC200521	6001610205	500		A
7117851100	PC2005W21	6001610200			A
7117851000	PC401511	6001610145	1500		A
7117850900	PC4015W11	6001610140			A
7117850800	PC351211	6001610135	1250		A
7117850700	PC3512W11	6001610130			A
7117850600	PC301011	6001610125	1000		A
7117850500	PC3010W11	6001610120			A
7117850400	PC250711	6001610115	750		A
7117850300	PC2507W11	6001610110			A
7117850200	PC200511	6001610105	500		A
7117850100	PC2005W11	6001610100			A
TABLE NO.	CAT. NO.	MODEL NO.	WATTS	VOLTS AC	MOD. LEVEL



- NOTES:
- SEE TABLE FOR CORRECT VARIABLE VALUES.
 - ALL PRINTING MUST BE CLEARLY LEGIBLE. ALL TEXT EXCEPT DATE CODE 0.095"/2.4mm MIN HIGH.
 - LABEL AND PRINTING MUST MEET C.S.A. ADHESION AND DEFAACEMENT STANDARD SPECIFICATIONS.

UNLESS OTHERWISE SPECIFIED	MATERIAL: CLEAR MYLAR	TITLE:	REV.:
No sharp edges on all parts. ALL DIM. IN MILLIMETERS DO NOT SCALE FLAT IS FOR REFERENCE ONLY TOLERANCES: X.XX ±0.15 X.X ±0.8 X ±3 HOLES: ±0.15 ANGLES: ±2°	FINISH: BLACK PRINTING	RATING LABEL FOR PC SERIES	03
	WHERE USED: 6001610000	DWG NO.:	SIZE:
	DR BY: JAD	7117850000	A
	CHK'D:	SHEET:	
	SCALE: 1:1	1 OF 1	
	DATE		
THIS DRAWING AND THE DESIGN OF THIS ARTICLE REPRESENTED HEREIN, ARE THE EXCLUSIVE PROPERTY OF DIMPLEX NORTH AMERICA LIMITED AND ARE PROVIDED STRICTLY ON A CONFIDENTIAL BASIS. THE DRAWING AND DESIGN SHALL BE USED ONLY FOR THE PURPOSES FOR WHICH THEY HAVE BEEN PROVIDED AND SHALL NOT BE PRODUCED, REPRODUCED, ALTERED, USED, PUBLISHED OR DISCLOSED TO OTHERS WITHOUT THE PRIOR WRITTEN CONSENT OF DIMPLEX NORTH AMERICA LIMITED.			