

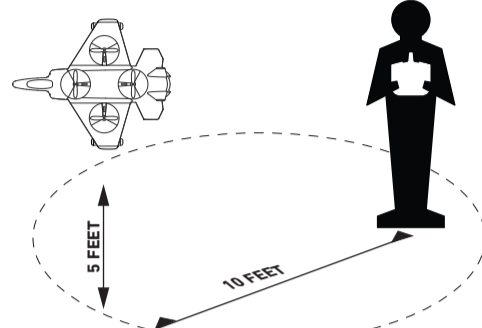


OPERATING DRONE

1. Pre Flight Checklist

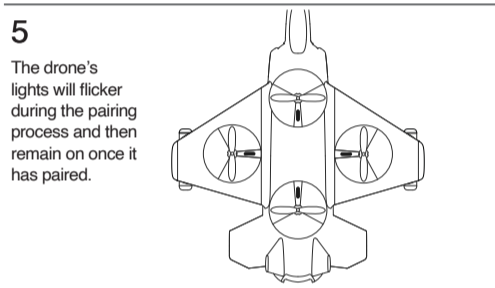
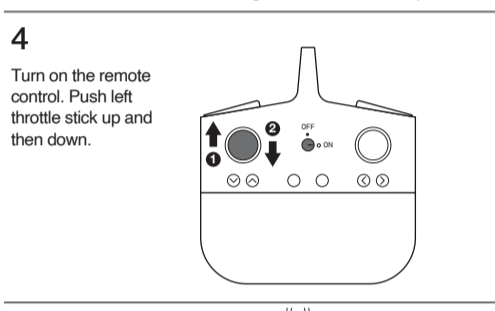
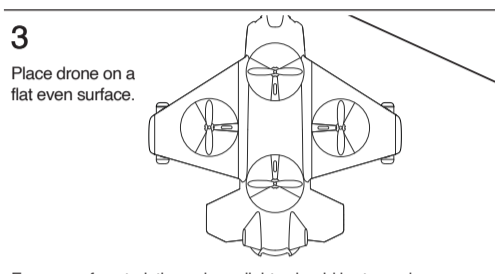
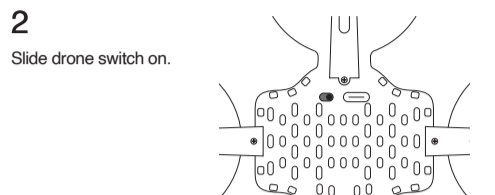
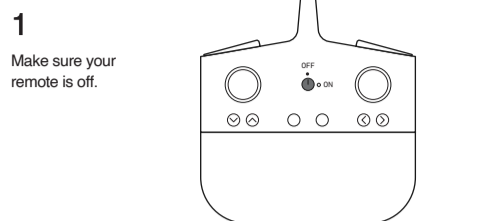
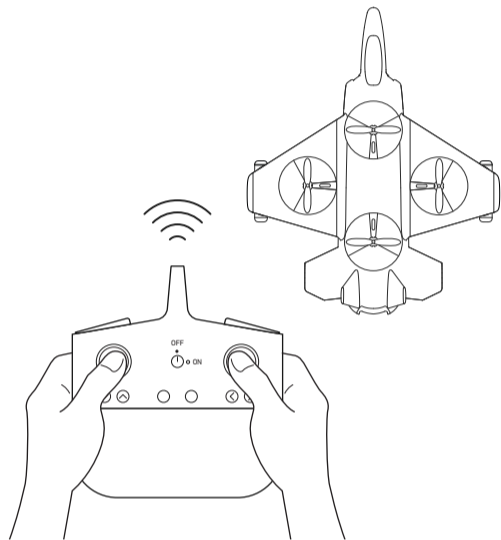
1. Read all warnings and instructions.
2. Install remote batteries. (See page 4)
3. Make sure that drone and remote are powered off.
4. Charge batteries. (See page 4)
5. First time operators should practice indoors.

2. Choose a location



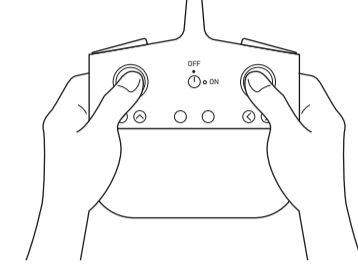
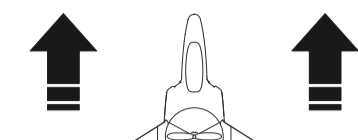
Always turn off remote prior to retrieving or picking up drone. This will help you avoid accidentally activating propellers.

3. Pairing Drone

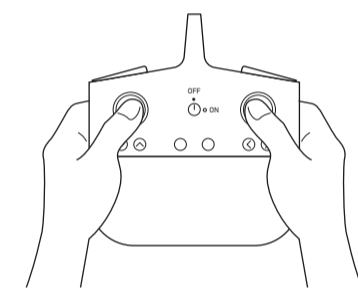
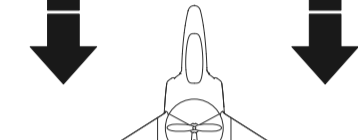


OPERATING DRONE

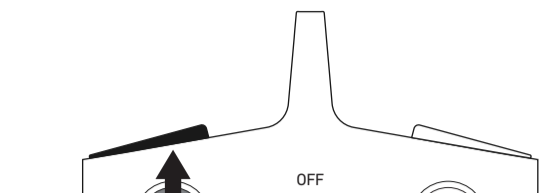
GO FORWARDS



GO BACKWARDS

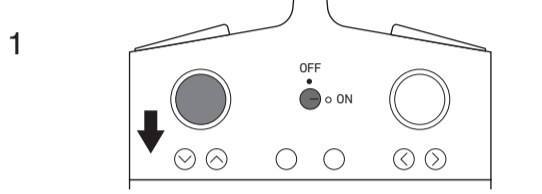


TAKE OFF

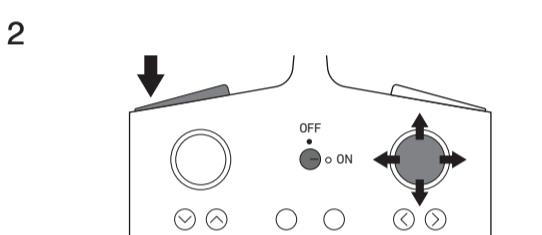


- There are 2 ways to launch the drone:
1. Slowly press the left throttle stick forward. The drone will begin to rise.
 2. Press the FLIGHT button. The drone will rise and hover.

LAND



- There are 2 ways to land the drone:
1. Slowly and carefully press the left throttle stick down until the drone lands.
 2. Press the FLIGHT button to initiate auto landing.
- For emergency stop, press and hold the FLIGHT button for 2 seconds or until the propellers stop spinning.

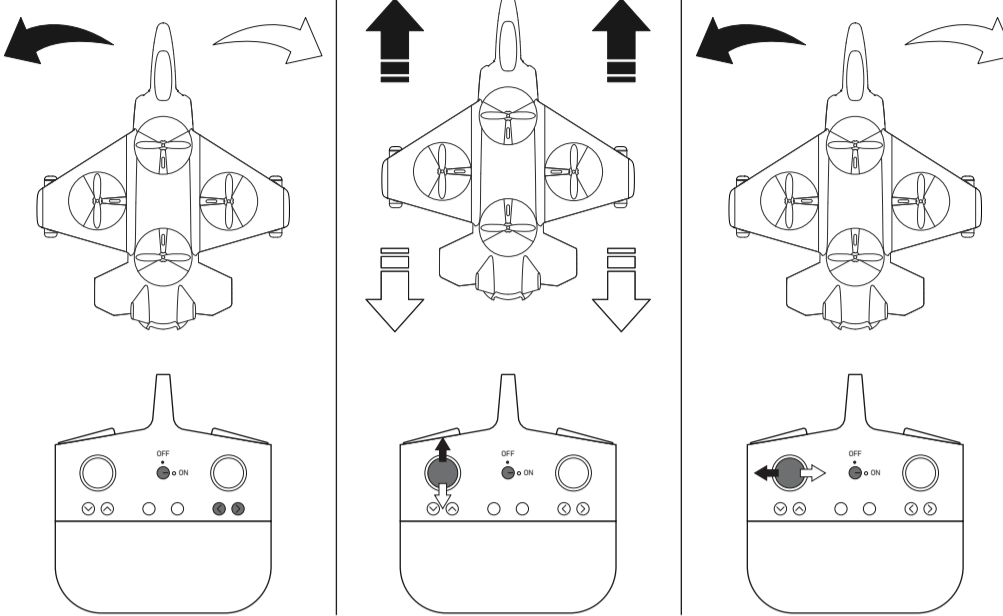


If the drone begins to drift, you can correct the drone's direction with the direction stick on the right.

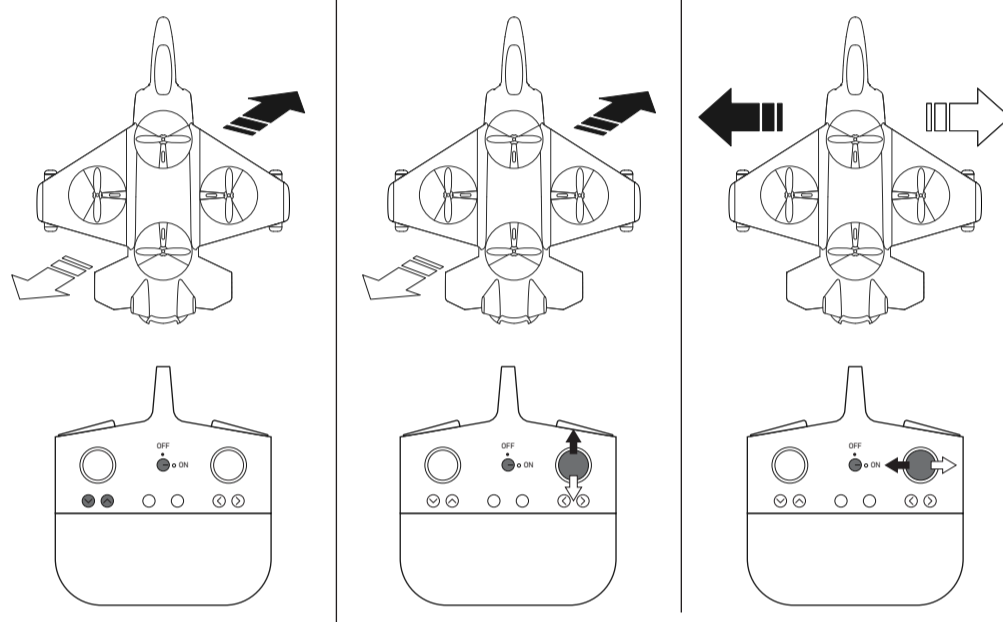
OPERATING DRONE

FINE-TUNING/DIRECTION

- Drifts Left and Right
- Hover Up and Down
- Turn Left and Right

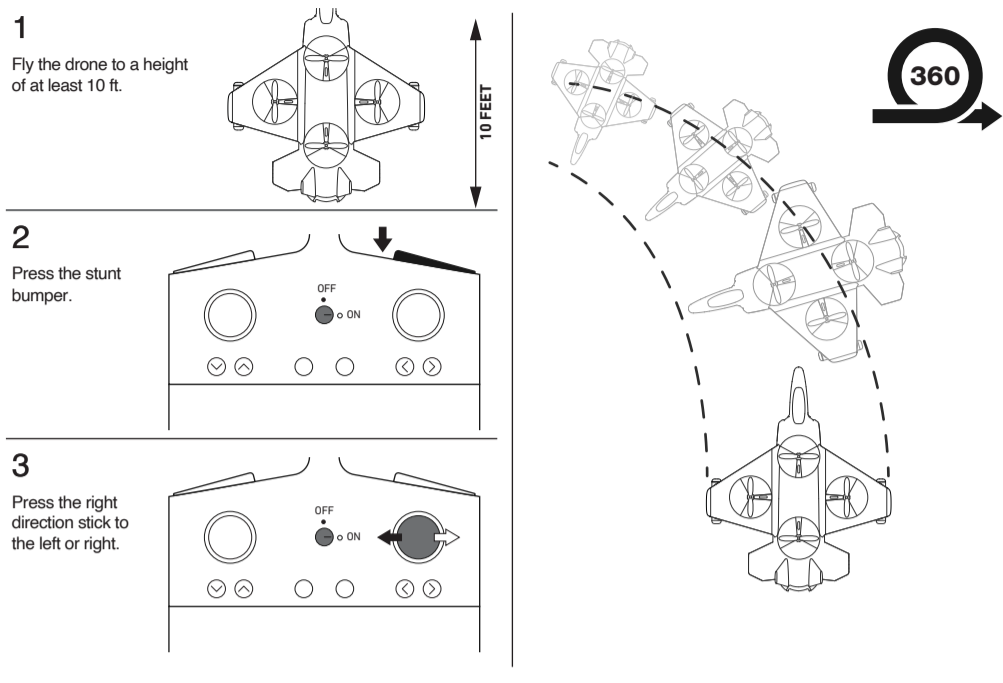


- Drifts Forwards and Backwards
- Forward and Backward
- Sideways

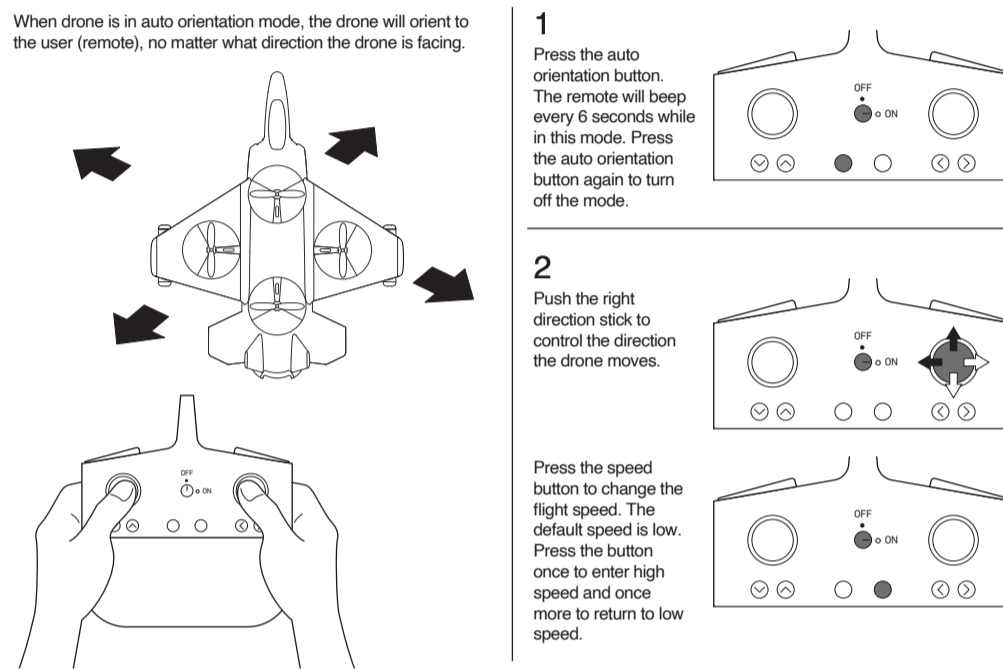


ADVANCED MODES

STUNT



AUTO-ORIENTATION/SPEED



TIPS

- Do not crash drone into sand or dirt. Drone gears may become clogged.
- When first learning to fly, practice lifting off and hovering.
- Stay several feet from walls and buildings.
- Always press throttle all the way down after crashing or when something gets stuck in propellers.
- Never fly drones above or near people, sudden changes in wind or other conditions could lead to unexpected crashes.
- Always use caution when flying drone vehicles, obey relevant laws, respect the privacy and property rights of others.
- Do not modify the drone or use it any way except for its intended purpose.

WARNING: Changes or modifications to this unit not expressly approved by the party responsible for compliance could void the user's authority to operate the equipment.

TROUBLE SHOOTING

When remote switch is turned on, the remote light does not illuminate:

- 1) Check that batteries in the remote are installed correctly
- 2) OR turn off the drone and remote controller and turn on again.
- 3) If the remote light still does not turn on, replace the batteries with new batteries.

During flight, the Remote Power LED is flashing:

- 1) Remote batteries are low. Land the drone immediately.
- 2) Replace old batteries.

Drone and remote properly pair, but the drone will not lift-off:

- 1) Drone battery needs charging. Use the USB Charge Cable to connect the drone to power source.

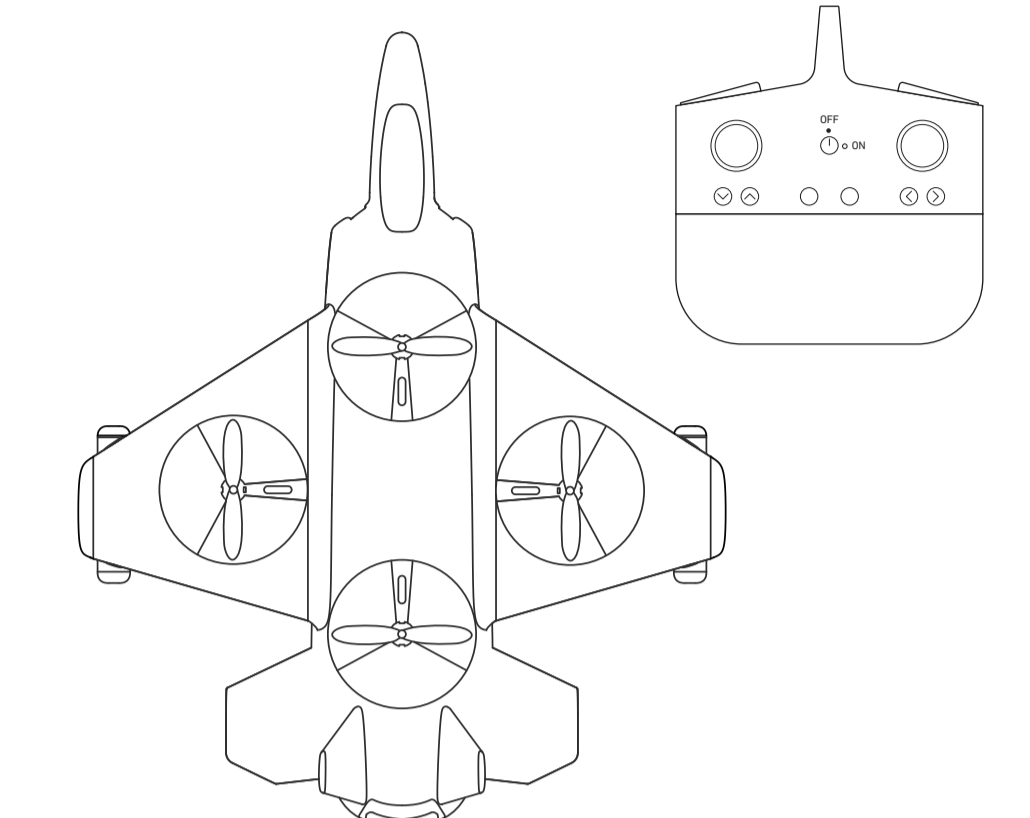
After trimming the drone, flight is very unstable and it cannot fly properly:

- 1) One or more blades are most likely damaged. Replace with the proper number replacement blade and try flying again (page 3).
- 2) Press the thumbstick down for 5 seconds to reset the gyroscope.
- 3) Turn off the drone and remote, then repeat the pairing process (page 6).

Remote and drone cannot be paired:

- 1) Remote must be within 12 feet of drone.
- Note:** If there is more than one unpaired drone within 12 feet, one must be successfully paired before others may be paired.

INSTRUCTION MANUAL



Adult Assembly Required

WARNING: CHOKING HAZARD - Small Parts. Not for children under 3 years.

BEFORE USE, READ ALL WARNINGS AND INSTRUCTIONS IN THIS MANUAL.

FAO® and FAO Schwarz® names and logos are trademarks or registered trademarks. All rights reserved. www.fao.com
 Distributed by and © 2022 MerchSource, LLC, Irvine, CA 92618.
 For customer support, please call 1-888-867-4533.

The artwork and design of this manual are protected by US copyright law and may not be reproduced, distributed, displayed, published or used for any purpose without prior written permission. It is not permitted to alter, remove or reproduce any trademarks or copyright notice from this manual.

Due to continuous product improvements, the picture on the manual may differ slightly from the actual product.

Printed in China

GETTING TO KNOW YOUR DRONE

PLEASE READ ALL WARNINGS AND INSTRUCTIONS PRIOR TO USE. KEEP THIS DOCUMENT AS IT CONTAINS IMPORTANT INFORMATION ABOUT YOUR DRONE.

CHARGING

- Drone must be charged before each use (USB Charge Cable included).
- Indicator light will turn off once fully charged.
- Install batteries in remote.

PAIRING

Before each flight pair the remote with the drone:

1. Turn your drone on and place on a flat, level surface.
2. Turn on the remote.
3. Push stick up and then down.
4. Repeat steps 1 and 2 if necessary.

IMPORTANT!

After a hard landing, turn drone and remote off. Then, repeat pairing.

DIRECTION

- The head of the Thunderbolt Drone is the front of the drone.
- The tail of the Thunderbolt Drone is the back of the drone.
- Not applicable in auto-orientation mode.

REMOTE CONTROL

Practice flying your drone below 10 feet and at low speeds until comfortable with all controls to avoid unnecessary damage or injury.

- Left joystick:**
 - Up/Down controls elevation
 - Left/Right controls spin
- Right joystick:** controls flight direction
- Direction Trim:** use to eliminate drift

To cut power to drone, move left joystick to down position.

GENERAL WARNINGS

READ ALL WARNINGS AND PRECAUTIONS BEFORE USE.

SAFETY WARNINGS

- Not recommended for children under 8 years of age. As with all electrical products, precautions should be observed during handling and use to reduce the risk of electrical shock.
- Adult supervision is required at all times.
- Never fly drones above or near people, sudden changes in wind or other conditions could lead to unexpected crashes.
- Always use caution when flying drone vehicles, obey relevant laws, respect the privacy and property rights of others.
- The drone shall never be modified or used for anything except its intended purpose.
- Before each use, an adult should review the product and battery to determine that no damage or hazards exist.
- DO NOT TOUCH SPINNING PROPELLERS.**
- Do not allow anything to intentionally make contact in any way with spinning propellers.
 - Prevent contact with spinning blades by turning off remote prior to handling drone.
- Use caution and pay attention to your surroundings while operating drone.
- Do not fly drone into animals, people, or inanimate objects.
- Keep drone away from power lines, buildings, trees, public areas, and any other potentially hazardous areas.
- Do not operate in rain, heavy wind, and/or any type of severe weather.
- Do not land drone on wet surfaces.
- Never touch or allow others to touch drone while it is flying.
- Always turn drone off when it is not in use.
- Always fly drone in large open areas.
- The drone will lose controlling capabilities if fly distance is more than maximum recommended altitude of 100 ft. Keep below 100 ft. to avoid potential crashing risk.
- The toy shall be used with caution since skill is required in order to control the flight and avoid collisions with the user, objects or third parties.
- Do not touch the rotating rotor, avoid loose clothing or hair that could be caught in the rotor, do not fly near the face.
- Adult supervisors should teach children how to safely fly and control the toy.

PLEASE RECYCLE OR DISPOSE OF ELECTRONICS PROPERLY. RECYCLING INFORMATION IS AVAILABLE AT WWW.MERCSOURCE.COM

FAA WARNING

This drone weighs 0.155lbs (71g). As of November 2017, the Federal Aviation Administration (FAA) requires registration of unmanned aircrafts weighing more than 0.55lbs. Visit www.faa.gov/ua/registeration for more information. Ongoing compliance with Federal, state and local laws regarding operation is an owner's sole responsibility.

WARNINGS

Warning: Changes or modifications to this unit not expressly approved by the party responsible for compliance could void the user's authority to operate the equipment.

Note: This equipment has been tested and found to comply with the limits for a Class B digital device, pursuant to part 15 of the FCC Rules. These limits are designed to provide reasonable protection against harmful interference in a residential installation. This equipment generates, uses and can radiate radio frequency energy and, if not installed and used in accordance with the instructions, may cause harmful interference to radio communications. However, there is no guarantee that interference will not occur in a particular installation. If this equipment does cause harmful interference to radio or television reception, which can be determined by turning the equipment off and on, the user is encouraged to try to correct the interference by one or more of the following measures:

- Reorient or relocate the receiving antenna.
- Increase the separation between the equipment and receiver.
- Connect the equipment into an outlet on a circuit different from that to which the receiver is connected.
- Consult the dealer or an experienced radio/TV technician for help.

This device complies with Part 15 of the FCC Rules. Operation is subject to the following two conditions: (1) this device may not cause harmful interference, and (2) this device must accept any interference received, including interference that may cause undesired operation.

Sharper Image® name and logo are registered trademarks. Distributed by and © 2021 MerchSource, LLC, Irvine, CA 92618. All rights reserved.

The artwork and design of this manual are protected by US copyright law and may not be reproduced, distributed, displayed, published or used for any purpose without prior written permission. Altering, removing or reproducing any of the trademark or copyright notices on this package is not permitted.

PATENT PENDING
 Printed in China
 Model Number: 1015953

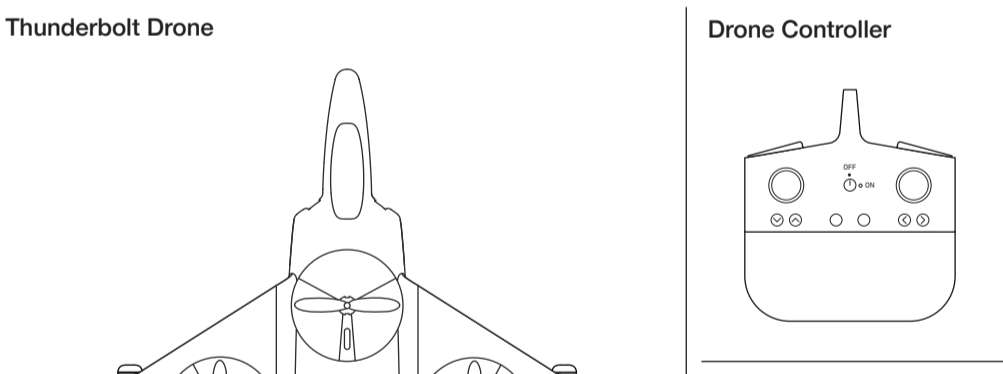
QUESTIONS OR CONCERNS? PLEASE GIVE US A CALL ... WE'RE HERE TO HELP

WARNING: ONLY USE PROVIDED USB CABLE FOR CHARGING

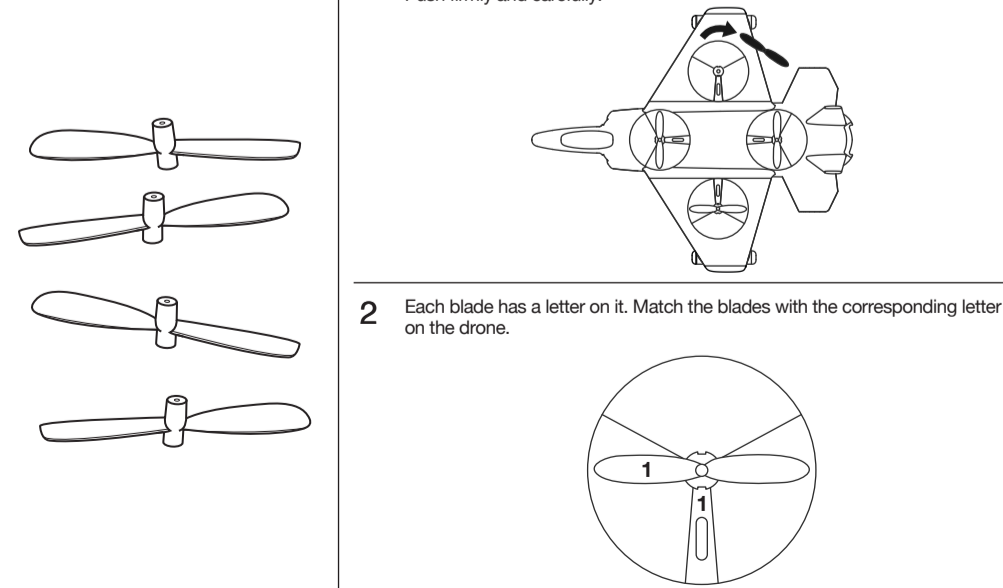
Before calling please locate the 10-digit code printed on the back of your remote

CONTENTS

INSIDE THE BOX



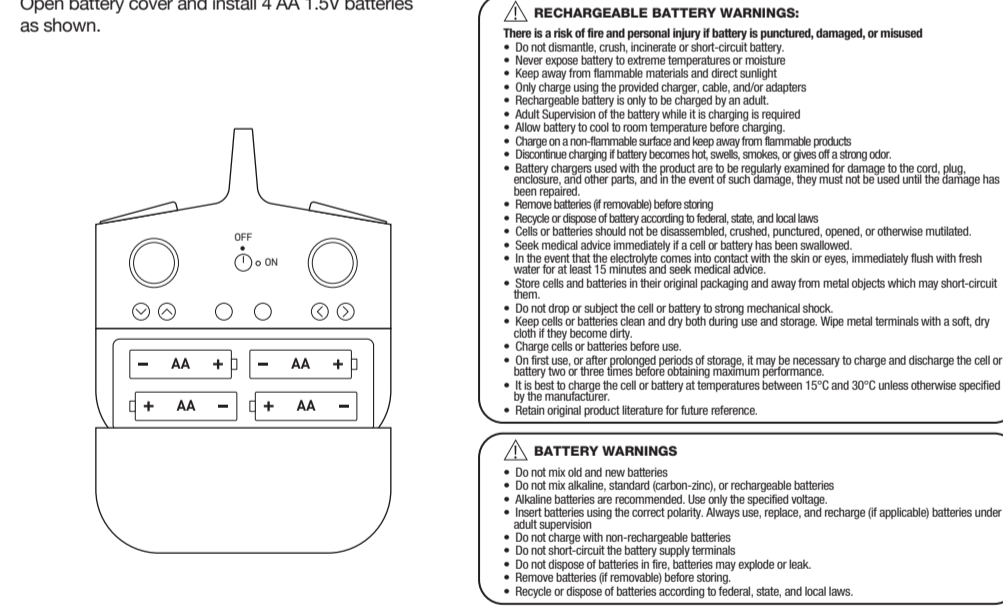
Replacement Propellers



CHARGING/BATTERY

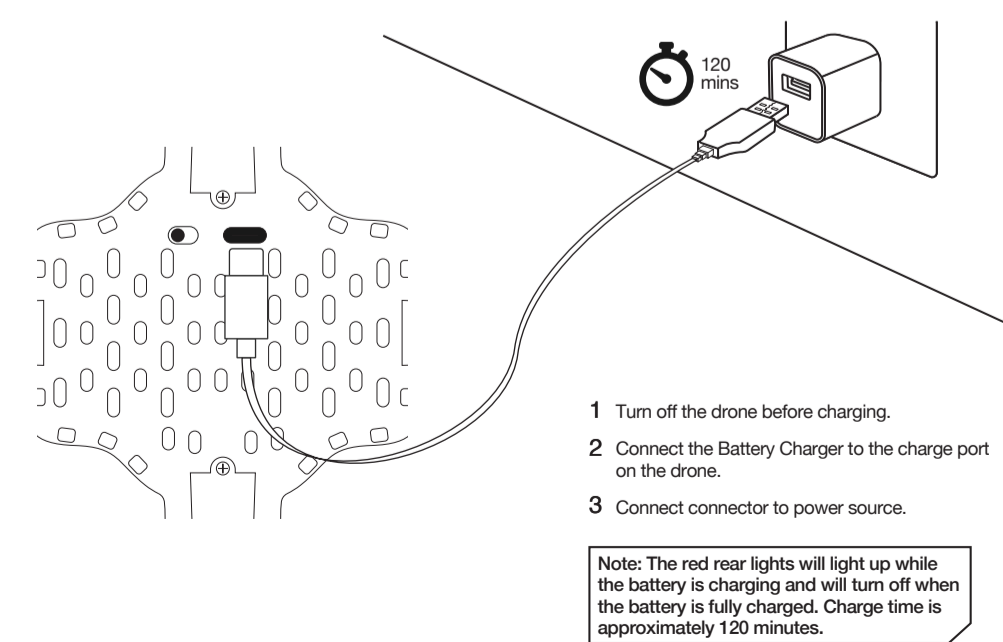
REMOTE

Open battery cover and install 4 AA 1.5V batteries as shown.



- RECHARGEABLE BATTERY WARNINGS:**
- Do not dismantle, crush, incinerate or short-circuit batteries.
 - Never expose battery to extreme temperatures or moisture.
 - Keep away from fire, flame, radiator and direct sunlight.
 - Only charge using the provided charger, cable, and/or adapters.
 - Non-rechargeable battery is not to be recharged.
 - Adult Supervision of the battery while it is charging is required.
 - Allow battery to cool for 10 minutes before recharging.
 - Charge on a non-flammable surface and keep away from flammable products.
 - Disconnect charging battery immediately from wall, outlet, or power of any type.
 - Battery charger used with the product can be damaged by lightning or surge to the cord, plug, receptacle, and other parts, and the ground fault trips. They must be unplug and the charge they use.
 - Remove battery if removable before using.
 - Remove or dispose of battery according to federal, state, and local laws.
 - Cells or batteries should not be disassembled, crushed, punctured, opened, or otherwise modified.
 - Do not make direct or indirect contact with any battery terminal.
 - Do not touch the electrolyte or other contents. Immediately flush with fresh water for at least 15 minutes and seek medical advice.
 - Store cells and batteries in their original packaging and away from metal objects which may short-circuit them.
 - Do not drop or subject the cell or battery to strong mechanical shock.
 - Use only the battery cover and only for the intended use and storage. Wipe metal terminals with soft, dry cloth if they become sticky.
 - Charge cells or batteries before use.
 - Do not use, or after prolonged periods of storage, if it may be necessary to charge and discharge the cell or battery first 5-10 times until the cell reaches full performance.
 - If it is to be charged, cell or battery at temperatures between 15°C and 30°C unless otherwise specified by the manufacturer.
 - Follow original product literature for future reference.
- BATTERY WARNINGS**
- Do not use old and new batteries.
 - Do not mix alkaline, standard carbon-zinc, or rechargeable batteries.
 - Always batteries are recommended. Use only the specified voltage.
 - Do not use more than the correct number. Always use: replace, and recharge if applicable to batteries unless other adult supervision.
 - Do not charge with non-rechargeable batteries.
 - Do not short-circuit the battery supply terminals.
 - Do not dispose of batteries in the battery may explode or leak.
 - Remove batteries if removable before using.
 - Recycle or dispose of batteries according to federal, state, and local laws.

DRONE



- 1 Turn off the drone before charging.
 - 2 Connect the Battery Charger to the charge port on the drone.
 - 3 Connect connector to power source.
- Note:** The red rear lights will light up while the battery is charging and will turn off when the battery is fully charged. Charge time is approximately 120 minutes.

OVERVIEW

