
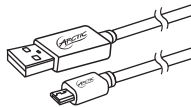


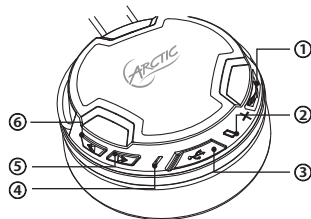


Packaging Contents	
P614 BT x 1 	Micro USB Cable x 1 
Travel Pouch x 1 	User Manual x 1 

Function Diagram

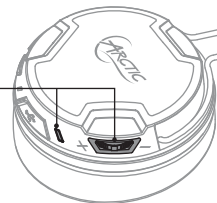
- ① Switch On / Off multifunction button
- ② LED indicator
- ③ Micro-USB charging / line in port
- ④ Microphone
- ⑤ Previous track
- ⑥ Next track



Switch the Headset On or Off

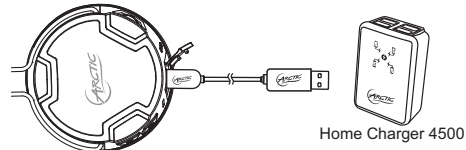
Switch On
Press the multifunction button for 3 seconds until the blue LED lights up

Switch Off
Press the multifunction button for 3 seconds until the red LED lights up



Charging the Headset

The P614 BT can be charged while switched on or off.
1. Insert the micro USB cable into the P614 BT and the USB side into a power source. (We recommend the Home Charger 4500).
2. When the Blue light on constantly the P614 BT is fully charged.



It is recommended to fully charge before initial use for better battery life

Cautions

- Wireless connections are affected by obstructions such as walls, human body and other devices.
- Keep P614 BT dry, moisture may damage electronic components.
- Exposure to high temperature will shorten the life and damage electronic components.
- Opening / altering the P614 BT voids all product warranty.
- Rough handling may damage inside electronic components.

Specifications

Wearing Style	Supra-aural, On-ear
Bluetooth Version	V4.0 Class 2
Frequency Response	20 Hz – 20 kHz
Driver Size	40 mm
Impedance	32Ω
Microphone Sensitivity	-42dB +/- 3dB
Battery	Rechargeable 850mAh Lithium-ion battery
Playback Time	30 hours
Weight	142 g



FCC ID Z3AP614BT

This device complies with Part 15 of the FCC Rules. Operation is subject to the following two conditions: (1) this device may not cause harmful interference, and (2) this device must accept any interference received, including interference that may cause undesired operation.

© 2013 CSR plc and its group companies.
The aptX® mark and the aptX logo are trade marks of CSR plc or one of its group companies and may be registered in one or more jurisdictions

The Bluetooth® word mark and logos are registered trademarks owned by Bluetooth SIG, Inc. and any use of such marks by ARCTIC (HK) Ltd. is under license. Other trademarks and trade names are those of their respective owners.

© 2014 ARCTIC Switzerland AG. All Rights Reserved.

No part of this manual including the products described in it, may be reproduced, transmitted, stored in a retrieval system, or translated into any language in any form or by any means, except documentation kept by the purchaser for backup purpose, without the express written permission of ARCTIC Switzerland AG. In no event shall ARCTIC its directors or employees be liable for any indirect damages, incidental or consequential damages arising from any defect or error in this manual or product.



www.arctic.ac

P614 BT

User Manual



support.arctic.ac/p614bt

Dear Customer,

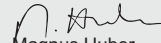
Thank you for choosing the ARCTIC P614 BT.

Based on the P402 BT, these on-ear headphones come with an even higher level of comfort and a far improved sound clarity. High end drivers and the most comfortable cushioning were incorporated to make the P614 BT an everyday essential.

I hope you enjoy the P614 BT as much as I do and we at ARCTIC look forward to further enriching your life with our products. If you would like to share how you use ARCTIC's products please do so at <https://www.facebook.com/ARCTIC.en>

ARCTIC is a fully carbon neutral company and your support helps us to compensate every kilogram of CO₂ we produce. Thank You.


Sincerely,


Magnus Huber
ARCTIC CEO

Getting Connected

The P614 BT allows you to pair with your mobile device in 2 different ways:

A. Bluetooth Pairing

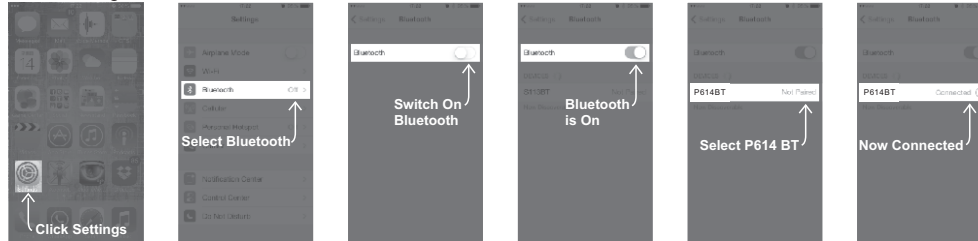
1. Switch on the P614 BT by Press the Multifunction Button  for 3 seconds.
2. The P614 BT automatically enters pairing mode shown by the red and blue LED flash alternately.
3. Turn on Bluetooth on your phone and pair it with the headphone.

Notes:

- Pairing mode will last up to ten minutes or until a device is found, two tones will sound to let you know when pairing has stopped.
- If you exceed the effective range of approx. 10M (33ft) the headphone will disconnect and will automatically reconnect if the speaker re-enters the effective range within ten minutes.

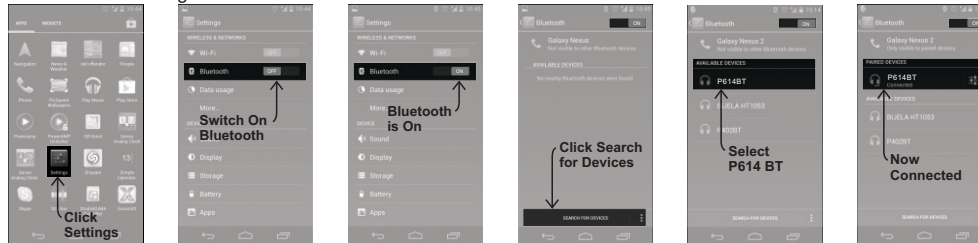
Example: iOS


Press Settings > Bluetooth and switch Bluetooth on > P614 BT > Pair

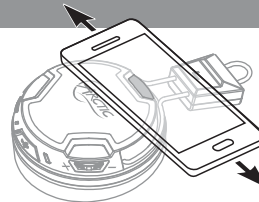


Example: Android 4.0

Press Menu > Settings > Switch on Bluetooth > Bluetooth > Search for devices > P614 BT > Pair



1. Switch on the P614 BT by Press the Multifunction Button  for 3 seconds.
2. Slide your phone very slowly from top to bottom across the shown area of the left side of the headphone until you hear a beep and a confirmation message comes up on your mobile device.
3. Play music!



LED Light Signals

Blue

- Blue light flashing slowly means the headphone is paired
- Blue light on constantly means the headphone is fully charged

Red


- Red light flashing means battery is low
- Red light on constantly means charging

Red & Blue

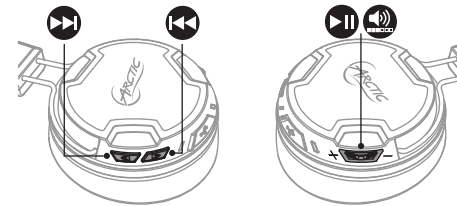
- When both the red and the blue lights are rapidly flashing, it means the headphone is in pairing mode

Reconnection

Via Bluetooth




1. Turn on Bluetooth on phone.
2. Switch on the P614 BT by Press the Multifunction Button  for 3 seconds.
3. If your device was the latest one to be paired with the P614 BT it will connect automatically otherwise please repeat pairing section.

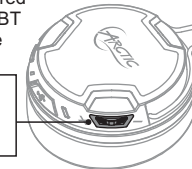
Music Controls



Phone Controls

If the mobile device that is paired (via Bluetooth) with the P614 BT headphone is a cellular phone you can:

- x1 
- 3 Sec. 
- 2 Sec. 



FCC Warning Statement

This equipment has been tested and found to comply with the limits for a Class B digital device, pursuant to Part 15 of the FCC Rules. These limits are designed to provide reasonable protection against harmful interference in a residential installation. This equipment generates uses and can radiate radio frequency energy and, if not installed and used in accordance with the instructions, may cause harmful interference to radio communications. However, there is no guarantee that interference will not occur in a particular installation. If this equipment does cause harmful interference to radio or television reception, which can be determined by turning the equipment off and on, the user is encouraged to try to correct the interference by one or more of the following measures:

- Reorient or relocate the receiving antenna.
- Increase the separation between the equipment and receiver.
- Connect the equipment into an outlet on a circuit different from that to which the receiver is connected.
- Consult the dealer or an experienced radio/TV technician for help

Any changes or modifications not expressly approved by the party responsible for compliance could void your authority to operate the equipment.