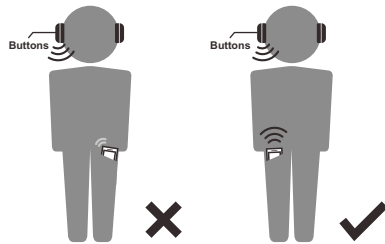


Packaging Contents

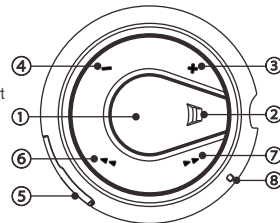
Headphones x 1, Micro USB Charging Cable x 1, Carrying case x 1, Welcome Guide x 1

Music Stutters



Function Diagram

- ① Multifunction button
- ② LED indicator
- ③ Volume +
- ④ Volume -
- ⑤ Micro USB charging port
- ⑥ Forward
- ⑦ Backward
- ⑧ Microphone



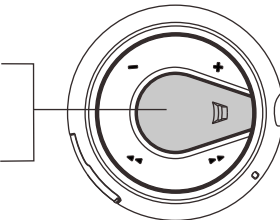
Switch the Headset On or Off

Switch on

Press the multifunction button for 3 seconds until the blue LED lights up

Switch off

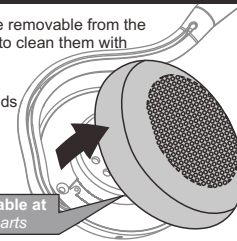
Press the multifunction button for 3 seconds until the red LED lights up



Removable and washable ear pads

The magnetic ear pads are removable from the headphone. It is possible to clean them with water and towel.

⚠ Do not wash the ear pads with washing machine.



Spare Ear Pads are available at p324bt.arctic.ac#spareparts

Cautions

- Wireless connections are affected by obstructions such as walls, human body and other devices.
- Keep P324 BT dry, moisture may damage electronic components.
- Exposure to high temperature will shorten the life and damage electronic components.
- Opening / altering the P324 BT voids all product warranty.
- Rough handling may damage inside electronic components.

Specifications

Wearing Style	Supra-aural, neck band
Bluetooth Version	V4.0 +EDR Class 2
Frequency Response	18Hz - 22kHz, THD 0.1%
Driver Size	30mm
Microphone Sensitivity	-42±5dB
Charging Port	Micro-USB
Battery	Rechargeable 400mAh Lithium-ion Polymer
Playback Time	20 Hours
Standby Time	Up to 400 hours
Weight	78g



© 2013 CSR plc and its group companies.

The Bluetooth® word mark and logos are registered trademarks owned by Bluetooth SIG, Inc., and any use of such marks by ARCTIC (HK) Ltd. is under license. Other trademarks and trade names are those of their respective owners.

FCC ID Z3AP324BT

This device complies with Part 15 of the FCC Rules. Operation is subject to the following two conditions: (1) this device may not cause harmful interference, and (2) this device must accept any interference received, including interference that may cause undesired operation.

© 2014 ARCTIC Switzerland AG. All Rights Reserved.

No part of this manual including the products described in it, may be reproduced, transmitted, stored in a retrieval system, or translated into any language in any form or by any means, except documentation kept by the purchaser for backup purpose, without the express written permission of ARCTIC Switzerland AG. In no event shall ARCTIC its directors or employees be liable for any indirect damages, incidental or consequential damages arising from any defect or error in this manual or product.

PKMNL00001A

Changes or modifications not expressly approved by the party responsible for compliance could void your authority to operate the equipment.



www.arctic.ac

P324 BT

Welcome Guide



support.arctic.ac/p324bt

Dear Customer,

Thank you for choosing the ARCTIC P324 BT.

YOU are the centre of ARCTIC. We work hard to approach all angles from a user's perspective and are fully dedicated to create innovative, user-friendly and affordable devices. YOUR satisfaction is our ultimate goal.

In order to assist you even better, we launched a support platform for Smartphones (support.arctic.ac).

I hope you enjoy the P324 BT and we at ARCTIC look forward to further enriching your life with our products. If you would like to share how you use ARCTIC's products please do so at <https://www.facebook.com/ARCTIC.en>

ARCTIC is a fully carbon neutral company and your support helps us to compensate every kilogram of CO₂ we produce. Thank You.

Sincerely,

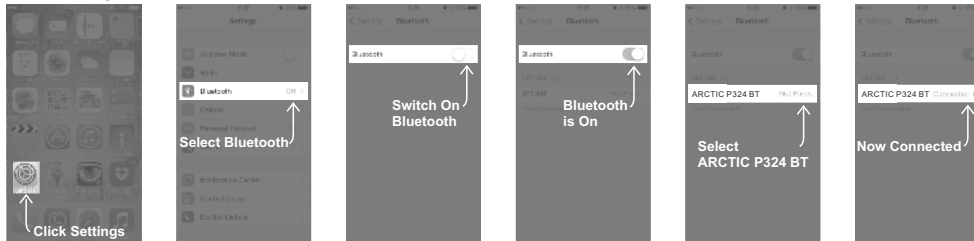
Magnus Huber
ARCTIC CEO

Pair with Your Smartphone / Tablet

1. Switch on the P324 BT by press the multifunction button for 3 seconds.
- 2 The P324 BT automatically enters pairing mode shown by the red and blue LED flash alternately.
▲ If the headphone is not in pairing mode, please turn off the Bluetooth on the latest paired device.
3. Turn on Bluetooth on your phone and pair it with the headphone.

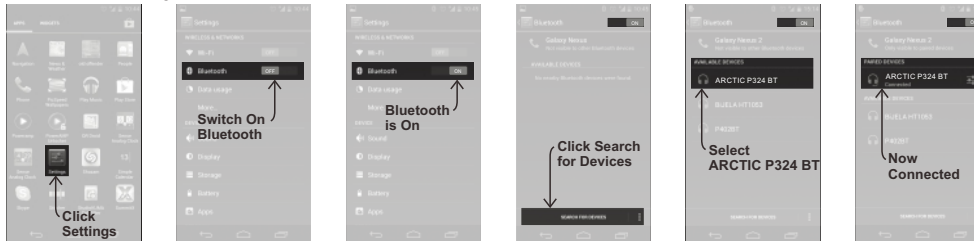
Example: iOS

Press Settings > Bluetooth and switch Bluetooth on > ARCTIC P324 BT > Pair



Example: Android 4.0

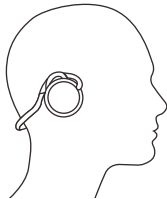
Press Menu > Settings > Switch on Bluetooth > Bluetooth > Search for devices > ARCTIC P324 BT > Pair



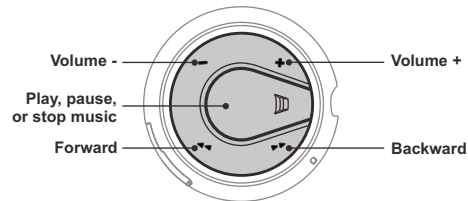
Notes:

- Pairing mode will last up to ten minutes or until a device is found, two tones will sound to let you know when pairing has stopped.
- If you exceed the effective range of approx. 10M (33ft) the headphone will disconnect and will automatically reconnect if the speaker re-enters the effective range within ten minutes.

How to Wear the Headset



Headset Controls



Phone Operations

If the mobile device that is paired (via Bluetooth) with the P324 BT headphone is a cellular phone you can:

Answer Call	Press the once.
End Call	Press the once.
Reject Call	Press and hold forward for 2 seconds.
Switch Call	Press and hold the for 2 seconds while in a call.

LED Indicators

Status	Indication
Charging	Red LED on
Battery full	Blue LED on
On and Paired	Blue LED flashes
Pairing mode	Red and blue LED will flash alternately
Low battery	Red LED flashes

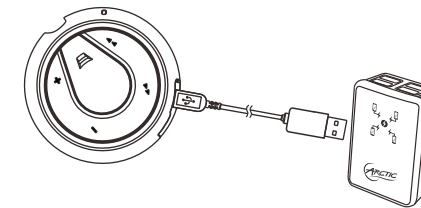
Reconnection

1. Turn on Bluetooth on phone.
2. Switch on the P324 BT by press the multifunction button for 3 seconds.
3. If your device was the latest one to be paired with the P324 BT it will connect automatically otherwise please repeat pairing section.

Charging

The P324 BT can be charged while switched on or off.

1. Insert the micro USB cable into the P324 BT and the USB side into a power source.
2. When the Blue light on constantly the P324 BT is fully charged.



It is recommended to fully charge before initial use for better battery life.

USB Chargers are available at chargers.arctic.ac