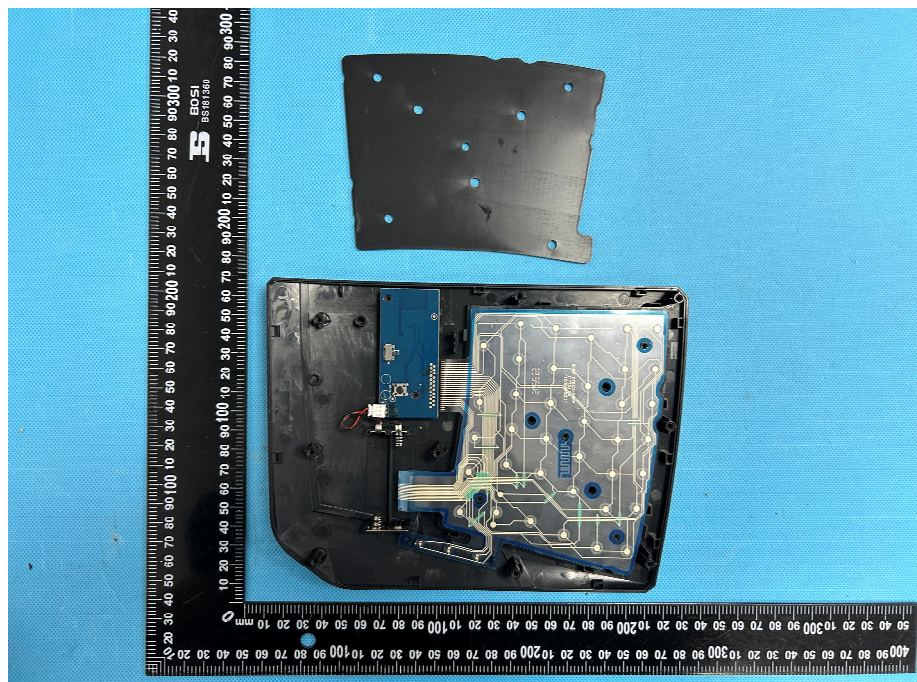


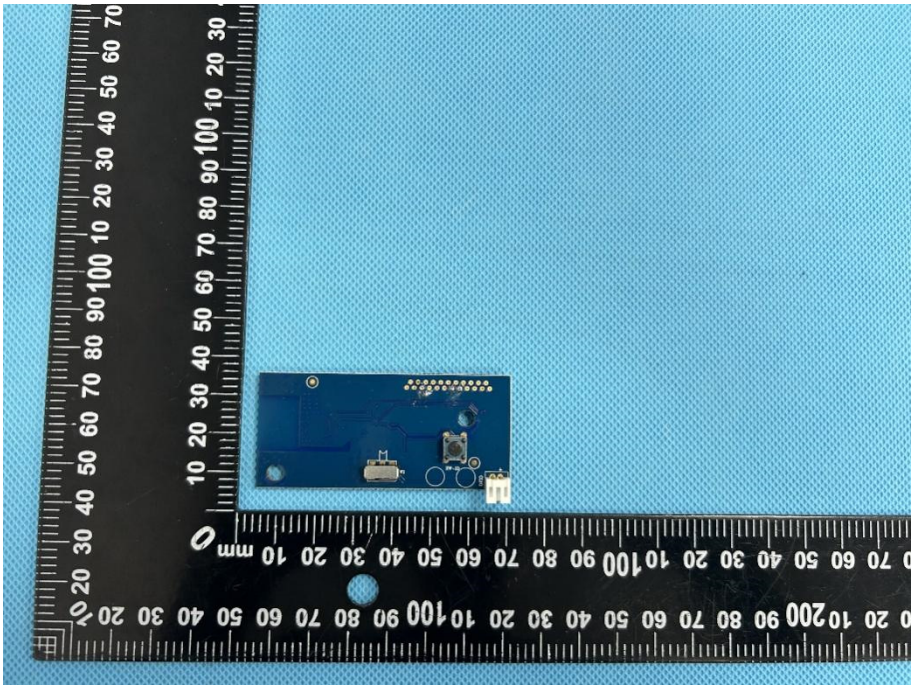
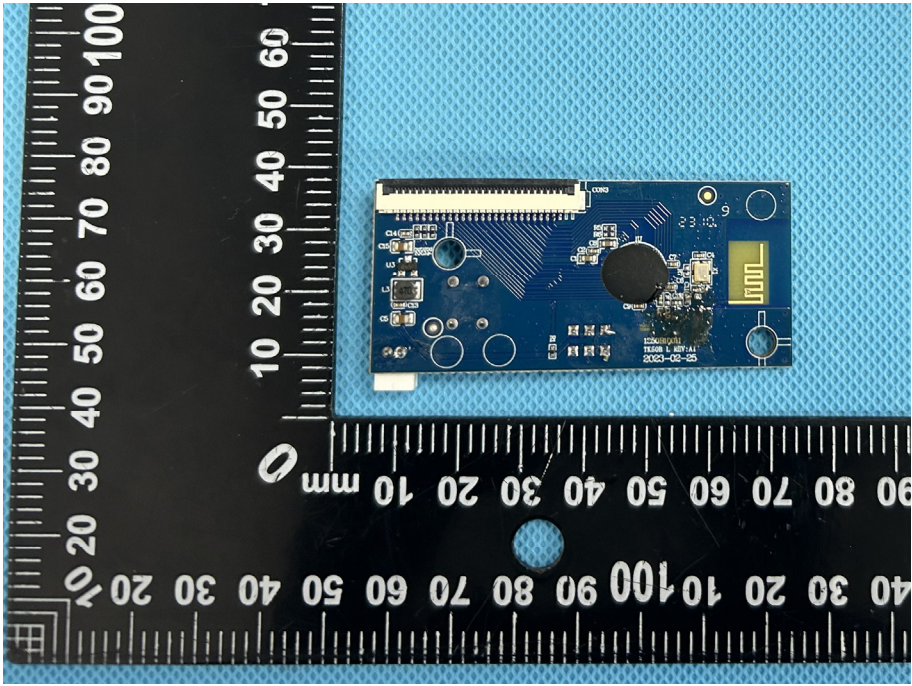
EXHIBIT 3 - EUT INTERNAL PHOTOGRAPHS

EUT Housing and Board View 1



EUT Housing and Board View 2



<p>Solder Board-Component View 1</p>	 <p>A photograph showing the front view of a blue PCB component. The component is rectangular and features several components including a microcontroller, a USB connector, and various passive components. It is placed on a blue textured surface next to a black L-shaped ruler for scale. The ruler shows measurements in millimeters, with the horizontal scale ranging from 0 to 100 mm and the vertical scale from 0 to 70 mm.</p>
<p>Solder Board-Component View 2</p>	 <p>A photograph showing the back view of the same blue PCB component. This view reveals the underside of the board, including a large circular component, a USB connector, and various surface-mount components. The component is placed on a blue textured surface next to a black L-shaped ruler for scale. The ruler shows measurements in millimeters, with the horizontal scale ranging from 0 to 100 mm and the vertical scale from 0 to 100 mm.</p>