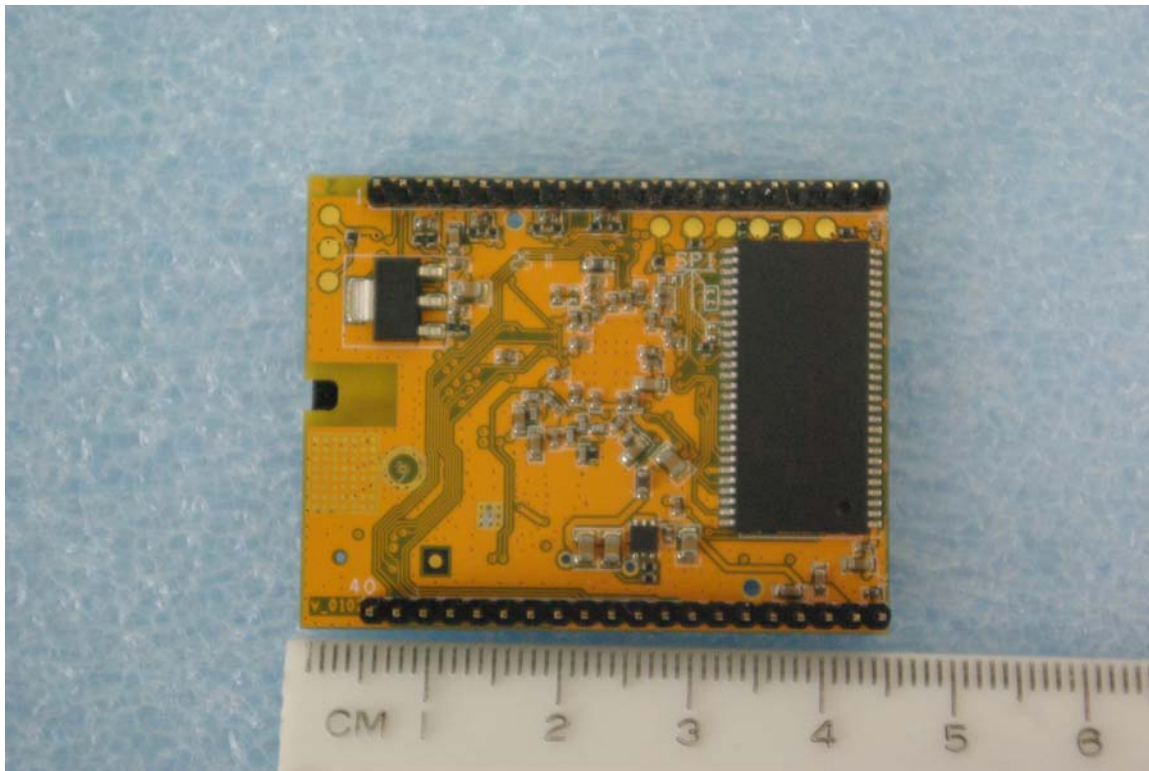


Internal photographs of equipment under test  
Top of Transmitter module without shield in place



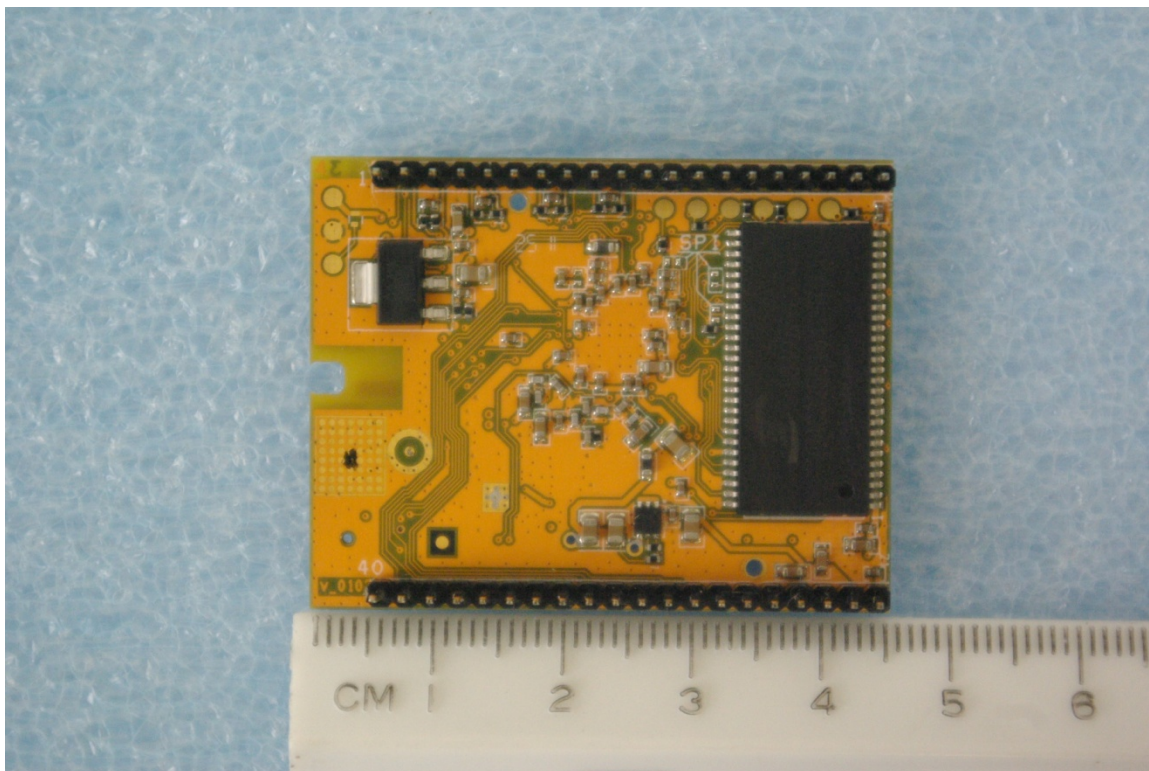
Bottom side of Transmitter module



Top of Transmitter module without shield in place



Bottom side of Transmitter module

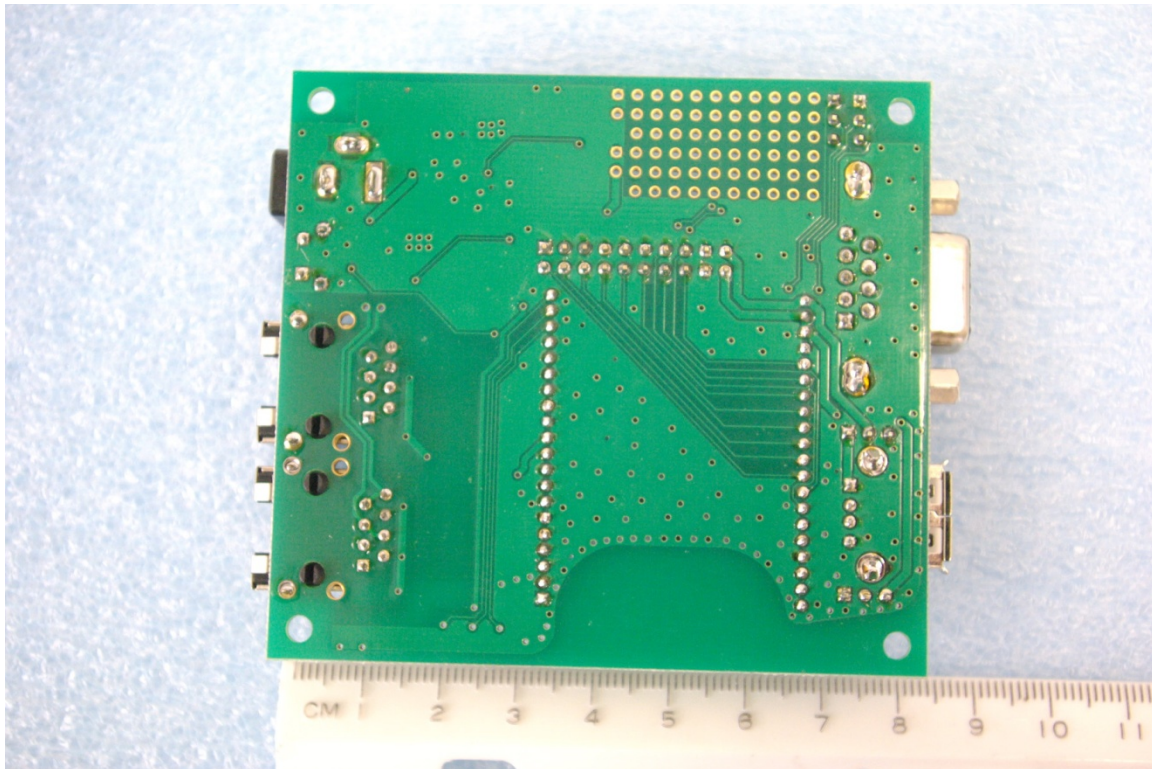
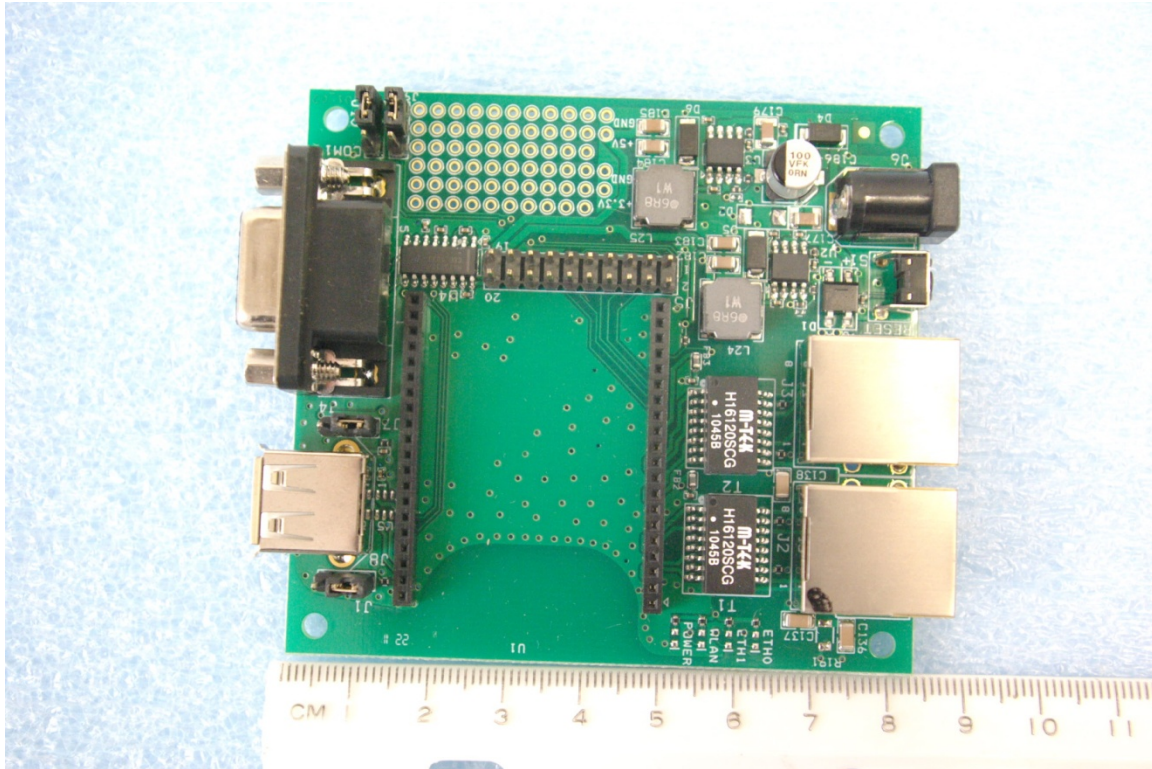


Rogers Labs, Inc.  
4405 W. 259th Terrace  
Louisburg, KS 66053  
Phone/Fax: (913) 837-3214  
Revision 1

ARC Wireless LLC  
Model: ARCFlex 802.11bgn Module  
Test #: 110826  
Test to: CFR47 (15.247)  
File: IntPho ARCFlex

SN: ENG1  
FCC ID#: Z2B-AFM1  
Date: September 27, 2011  
Page 2 of 4

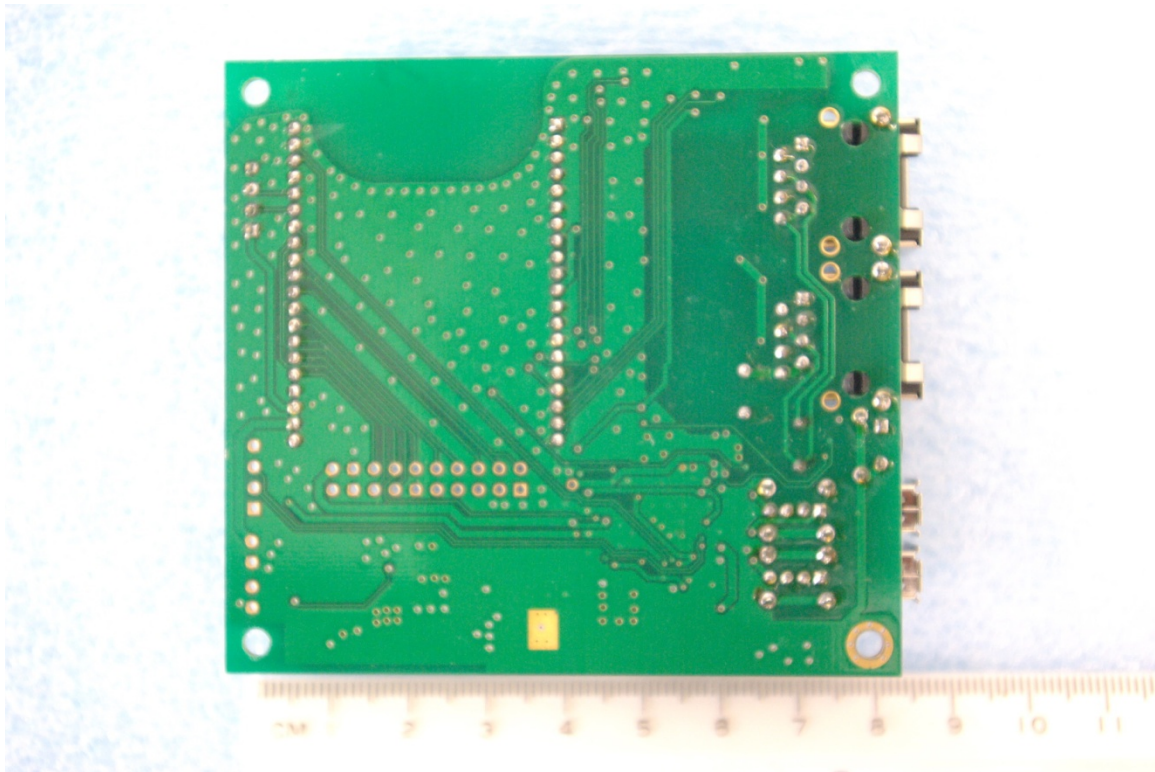
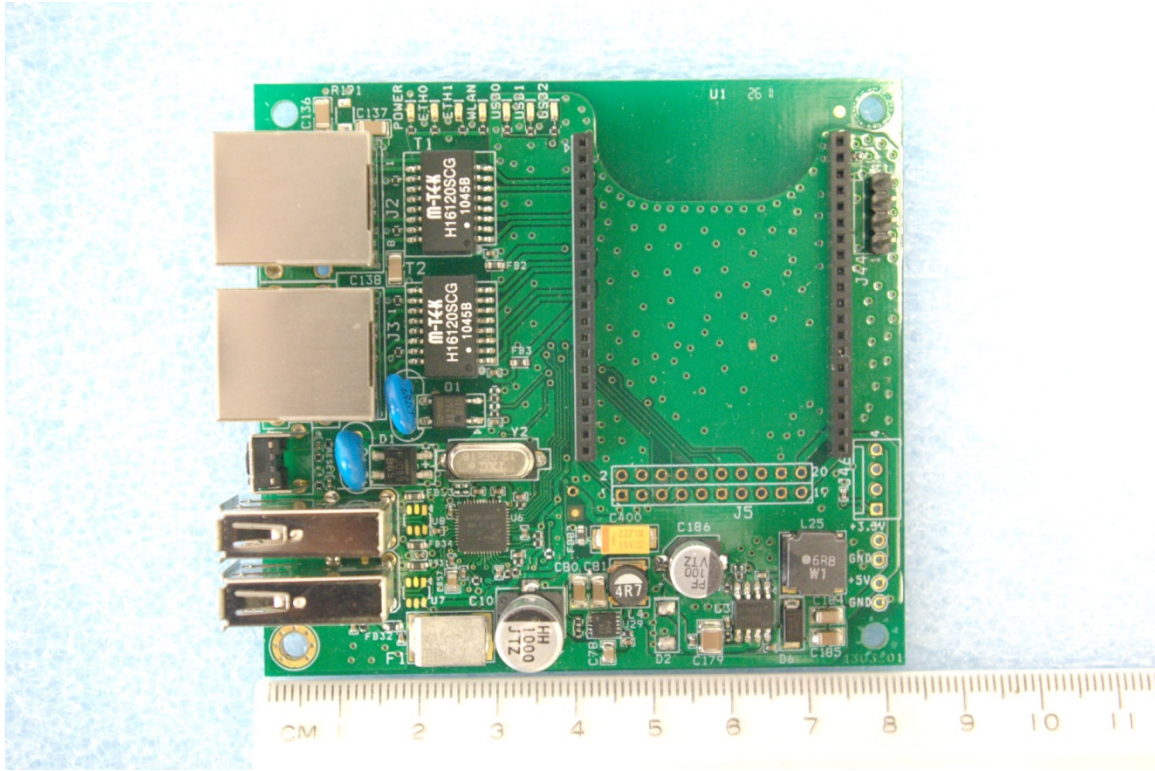
support interface boards



Rogers Labs, Inc.  
4405 W. 259th Terrace  
Louisburg, KS 66053  
Phone/Fax: (913) 837-3214  
Revision 1

ARC Wireless LLC  
Model: ARCFlex 802.11bgn Module  
Test #: 110826  
Test to: CFR47 (15.247)  
File: IntPho ARCFlex

SN: ENG1  
FCC ID#: Z2B-AFM1  
Date: September 27, 2011  
Page 3 of 4



Rogers Labs, Inc.  
4405 W. 259th Terrace  
Louisburg, KS 66053  
Phone/Fax: (913) 837-3214  
Revision 1

ARC Wireless LLC  
Model: ARCFlex 802.11bgn Module  
Test #: 110826  
Test to: CFR47 (15.247)  
File: IntPho ARCFlex

SN: ENG1  
FCC ID#: Z2B-AFM1  
Date: September 27, 2011  
Page 4 of 4