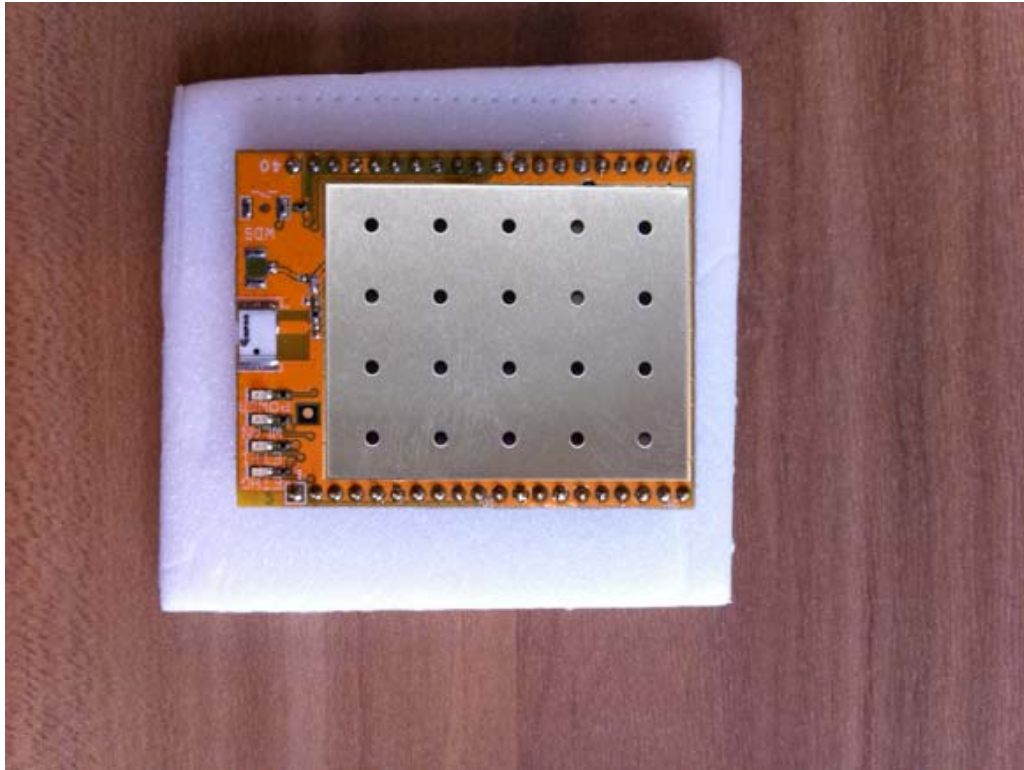
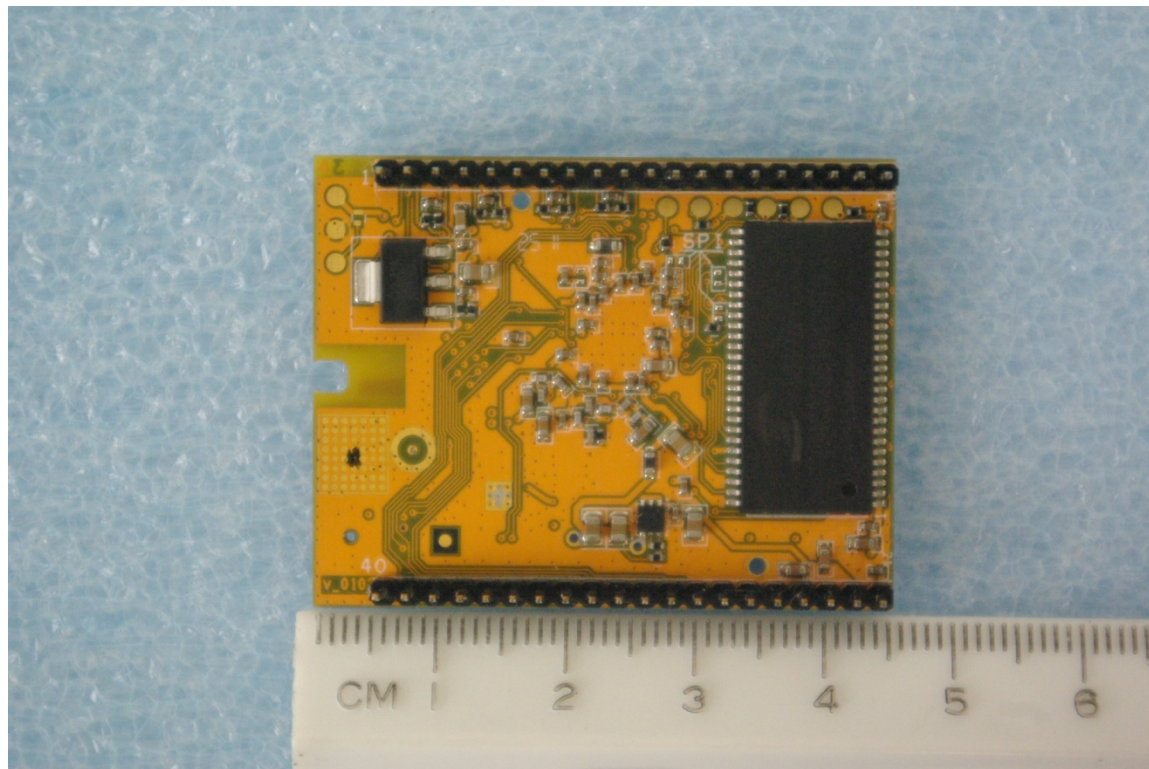


External photographs of equipment under test  
EUT module front



EUT module back

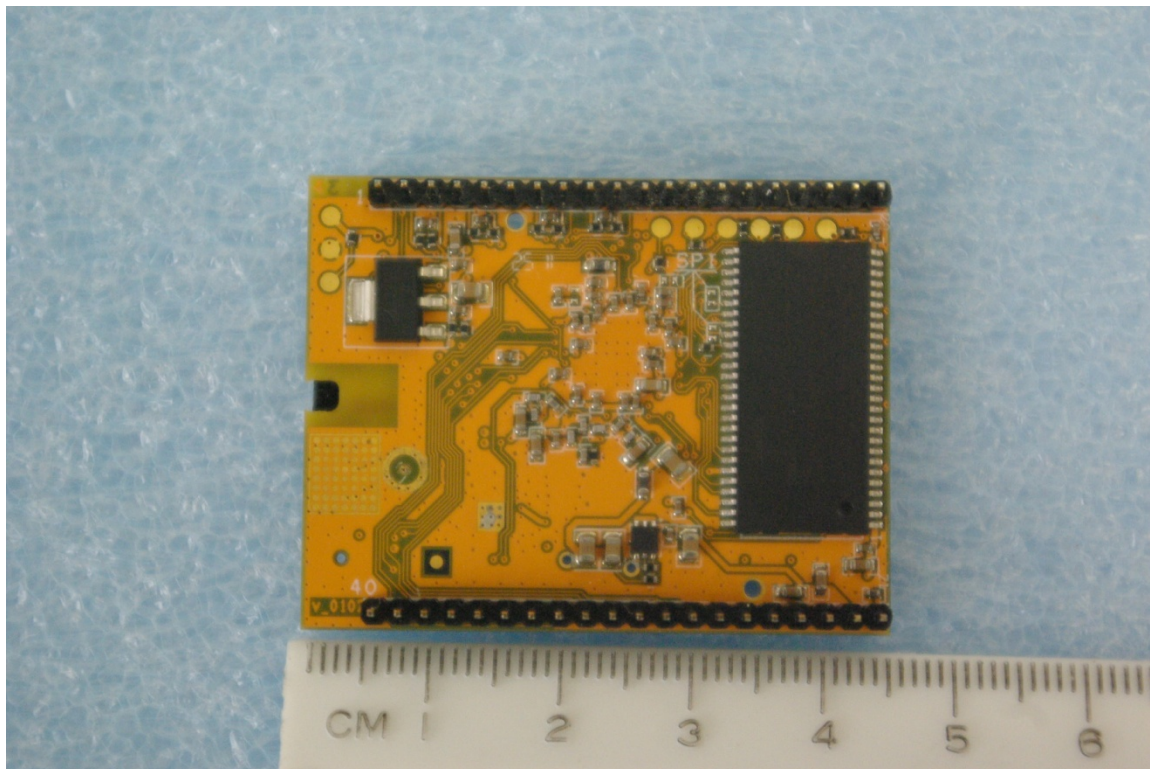
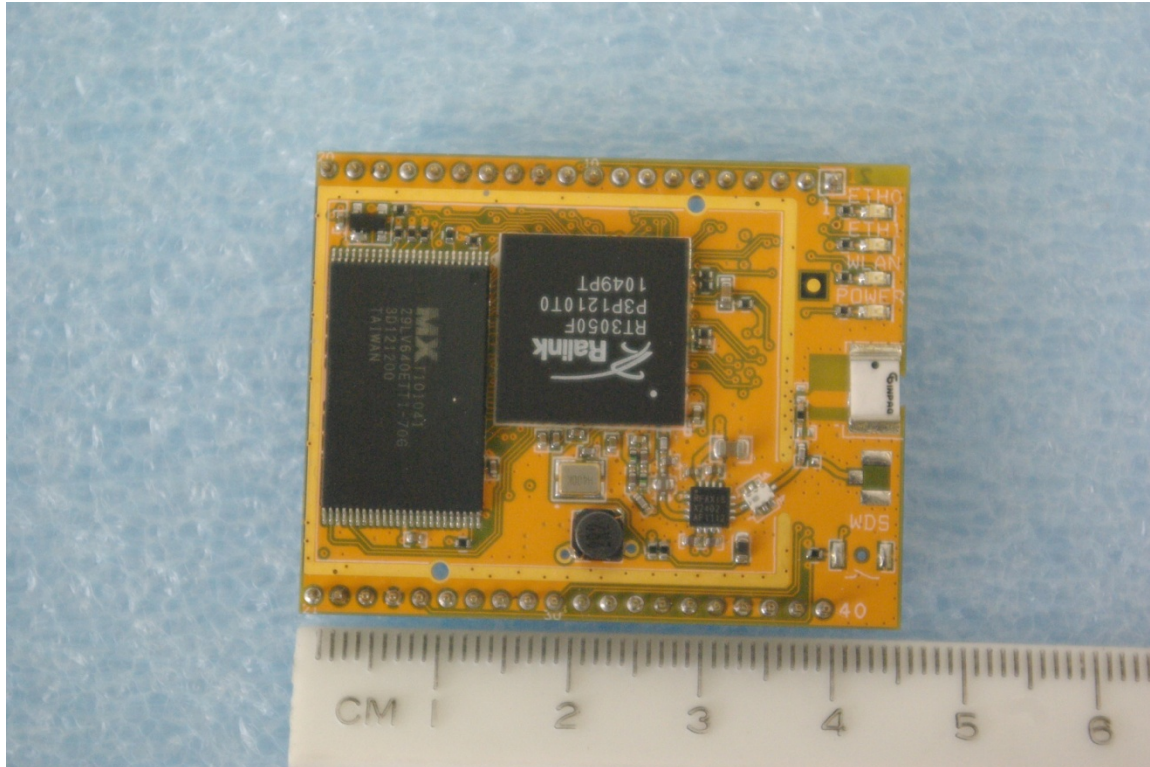


Rogers Labs, Inc.  
4405 W. 259th Terrace  
Louisburg, KS 66053  
Phone/Fax: (913) 837-3214  
Revision 1

ARC Wireless LLC  
Model: ARCFlex 802.11bgn Module  
Test #: 110826  
Test to: CFR47 (15.247)  
File: ExtPho ARCFlex

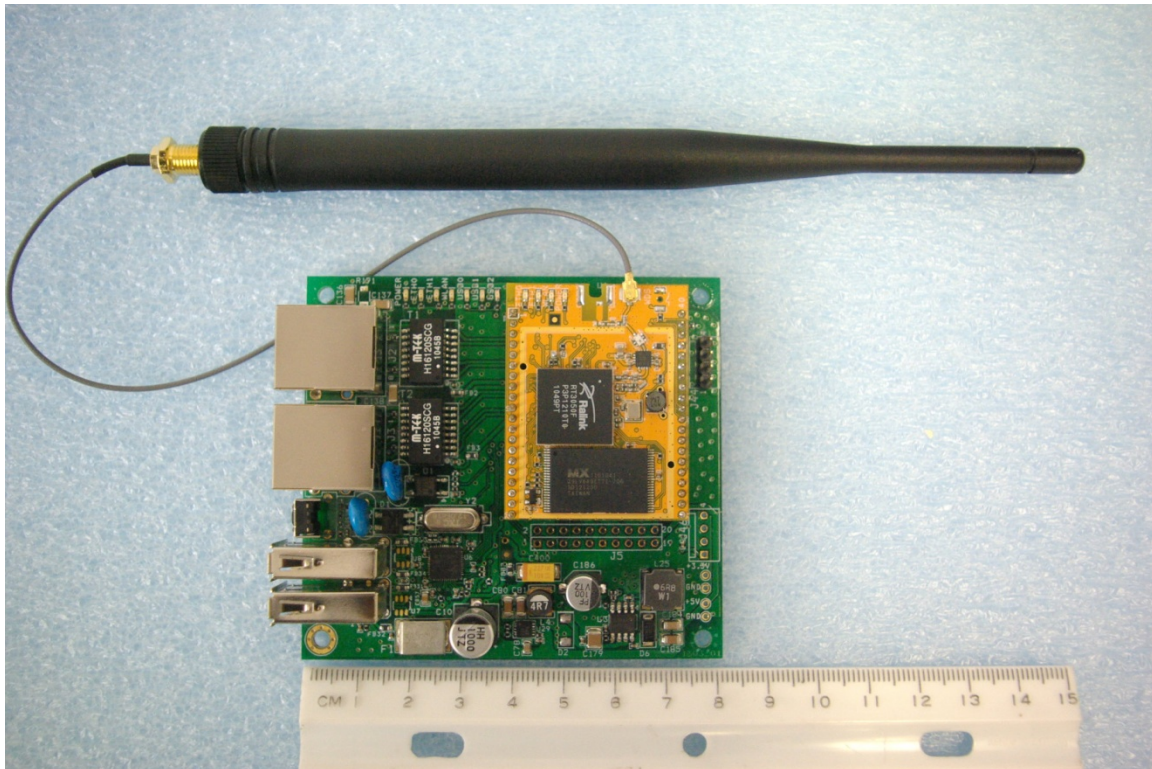
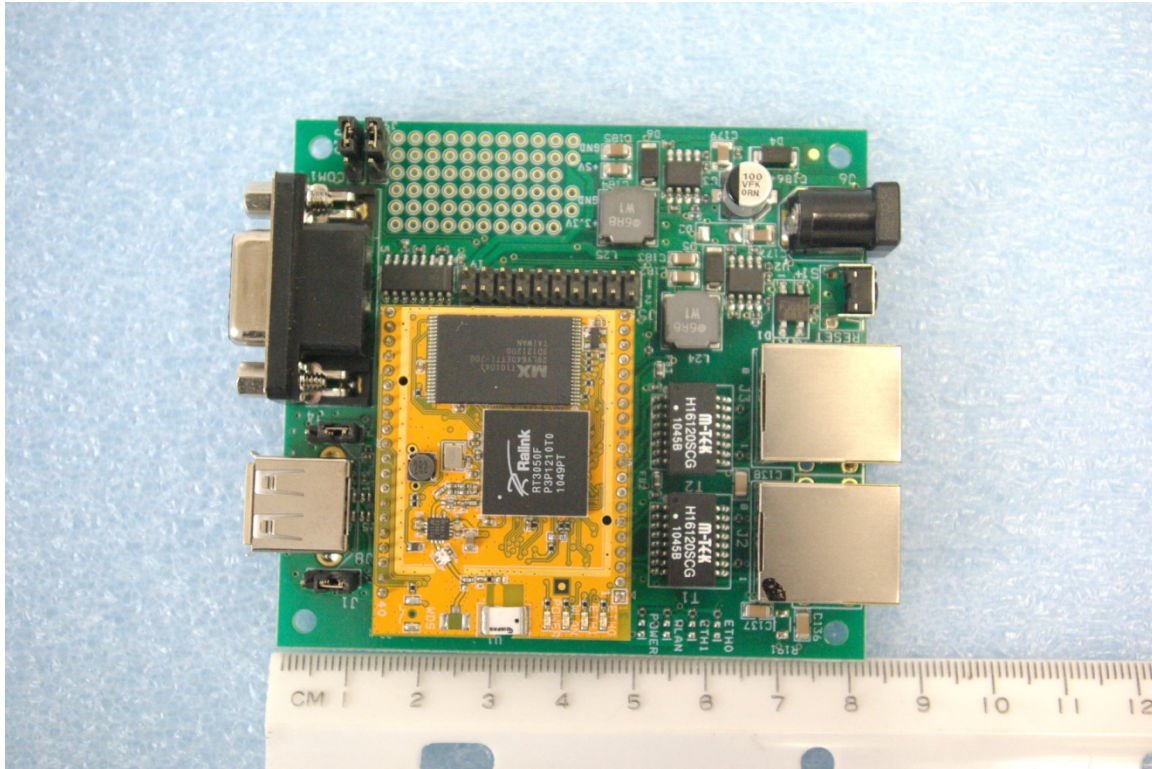
SN: ENG1  
FCC ID#: Z2B-AFM1  
Date: September 27, 2011  
Page 1 of 4

Chip Mounted antenna (without shield in place)





Transmitter board placed on the support interface board



Rogers Labs, Inc.  
4405 W. 259th Terrace  
Louisburg, KS 66053  
Phone/Fax: (913) 837-3214  
Revision 1

ARC Wireless LLC  
Model: ARCFlex 802.11bgn Module  
Test #: 110826  
Test to: CFR47 (15.247)  
File: ExtPho ARCFlex

SN: ENG1  
FCC ID#: Z2B-AFM1  
Date: September 27, 2011  
Page 3 of 4



Accessories



Rogers Labs, Inc.  
4405 W. 259th Terrace  
Louisburg, KS 66053  
Phone/Fax: (913) 837-3214  
Revision 1

ARC Wireless LLC  
Model: ARCFlex 802.11bgn Module  
Test #: 110826  
Test to: CFR47 (15.247)  
File: ExtPho ARCFlex

SN: ENG1  
FCC ID#: Z2B-AFM1  
Date: September 27, 2011  
Page 4 of 4