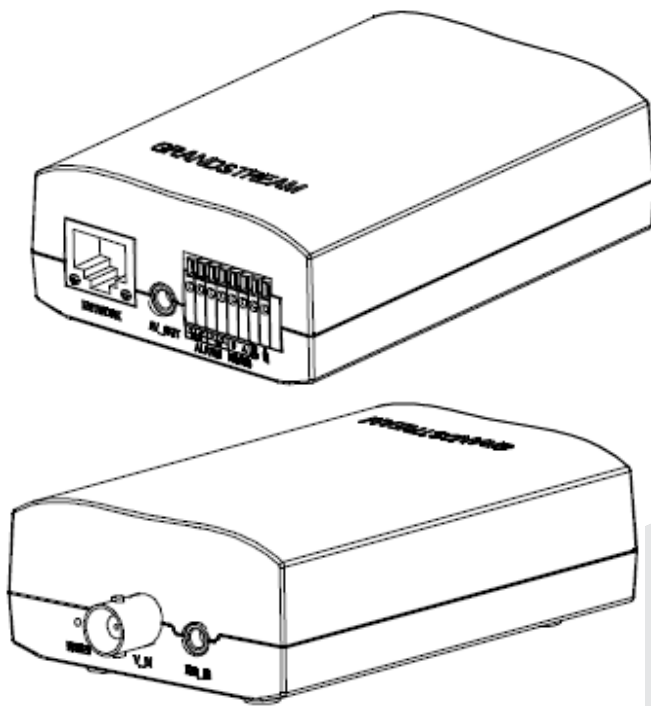


## GXV 3500

IP video Codec

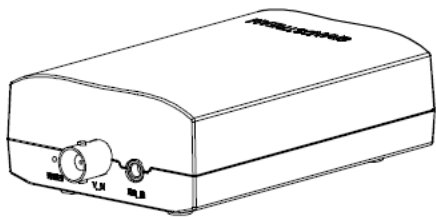




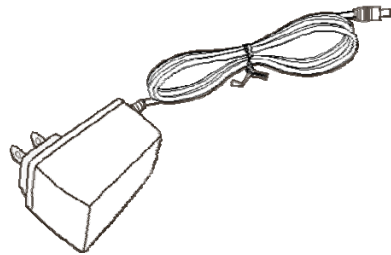
## PRECAUTIONS

- Do not attempt to open, disassemble, or modify the device
- Do not use a third party power adapter
- Do not expose this device to temperatures outside the range of -10 C to +55 C
- Do not expose the GXV3500 to environments outside of the following humidity range: 10-90% RH (non-condensing)

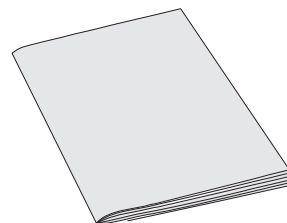
## PACKAGE CONTENTS



GXV 3500



12V Power Supply

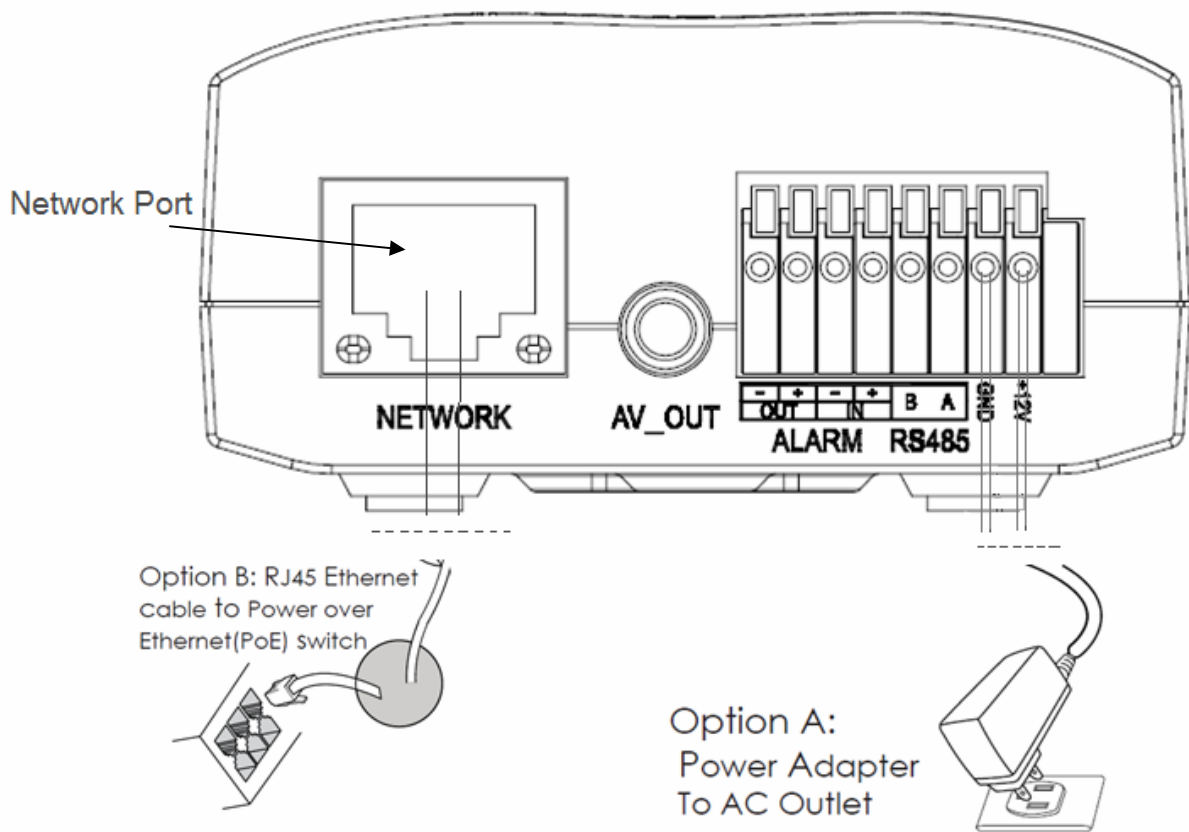


QuickStart Guide

3.5mm to RCA audio/video cable

## CONNECTING THE GXV3500

Refer to the illustration below when following the instructions on the next page.



NOTE: Choose Option A if using the power supply. Or choose Option B if using a Power over Ethernet (PoE) switch.

## Option A

**Step 1:** Insert the power adapter into the 12V DC port on the GXV3500. Plug the other end of the adapter into an AC power outlet.

**Step 2:** Plug an RJ45 Ethernet cable into the network port. Plug the other into a hub, switch or router.

## Option B

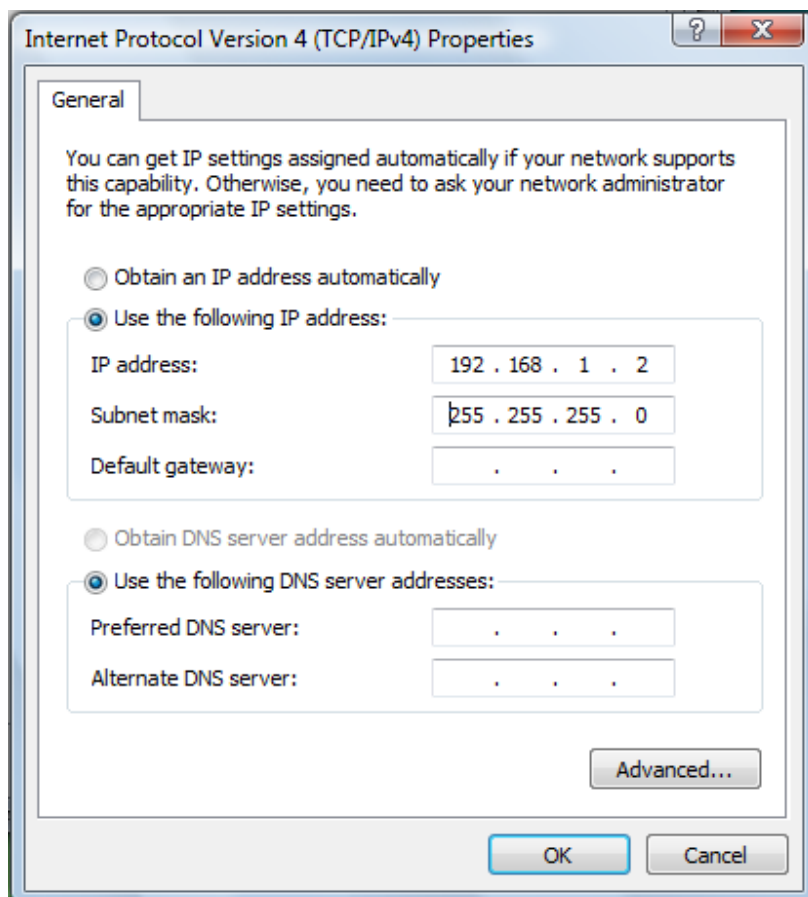
**Step 1:** Plug an RJ45 Ethernet cable into the network port. Plug the other end into a Power over Ethernet (PoE) switch.

## GXV3500 CONFIGURATION

Configuring the GXV3500 using Microsoft Internet Explorer

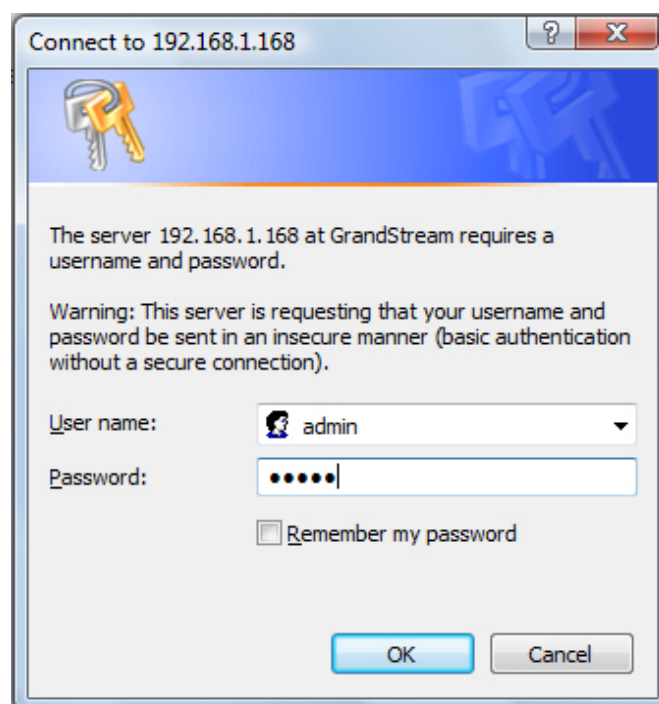
**Step 1:** Connect your PC and the GXV3500 to the same network.

**Step 2:** Set the IP address of your PC to 192.168.1.X. set the Default Gateway of your PC to 255.255.255.0.

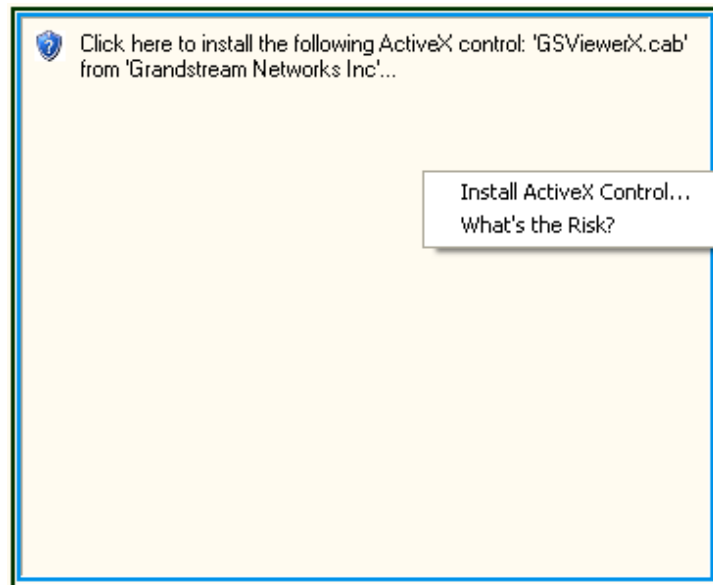


**Step 3:** Open Microsoft Internet Explorer on your PC. Type 192.168.1.168 in the address bar.

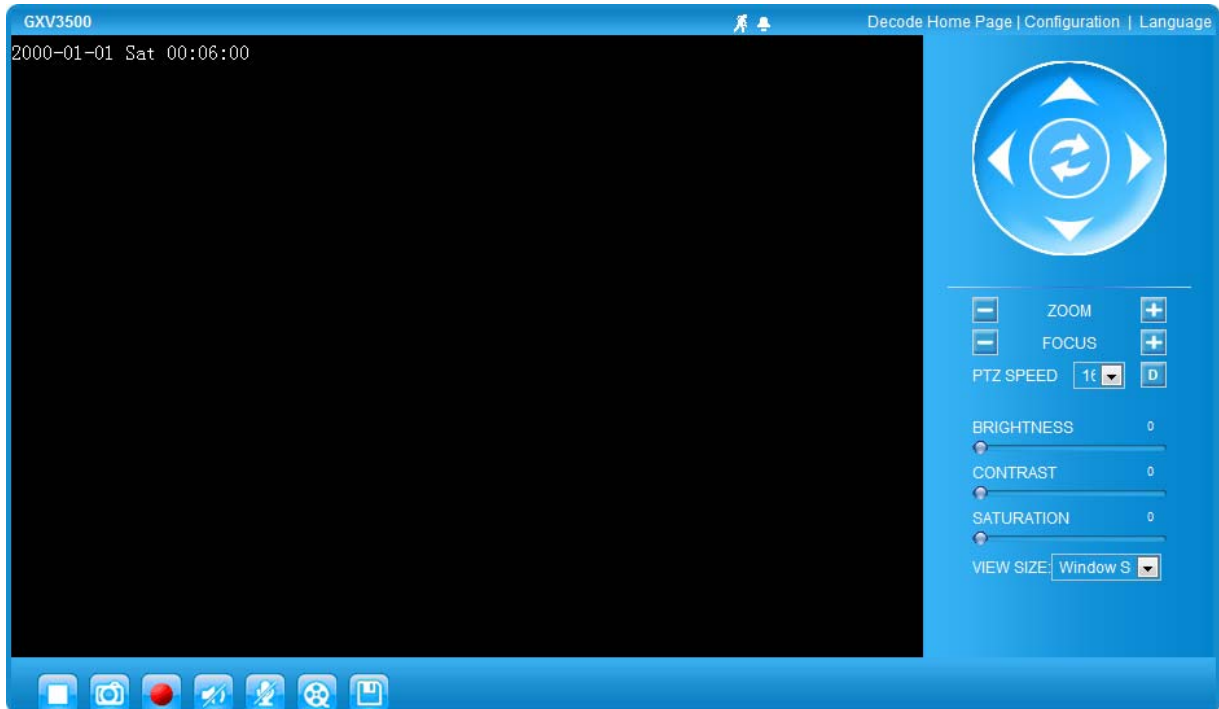
**Step 4:** A pop-up window will appear with prompts for a user name and password. The default administrator user name and password are both set to "admin" at the default factory configuration.



**Step 5:** Once you log into the GXV3500's web interface Internet Explorer will indicate that "This website wants to install to following add-on: 'GSViewer.cab' from Grandstream Networks, Inc." Install this add-on by following the instructions.



**Step 6:** Once the installation of GSViewX.cab completes you will see the web page shown in the screenshot on the next page. Click the play button to view the video feed.

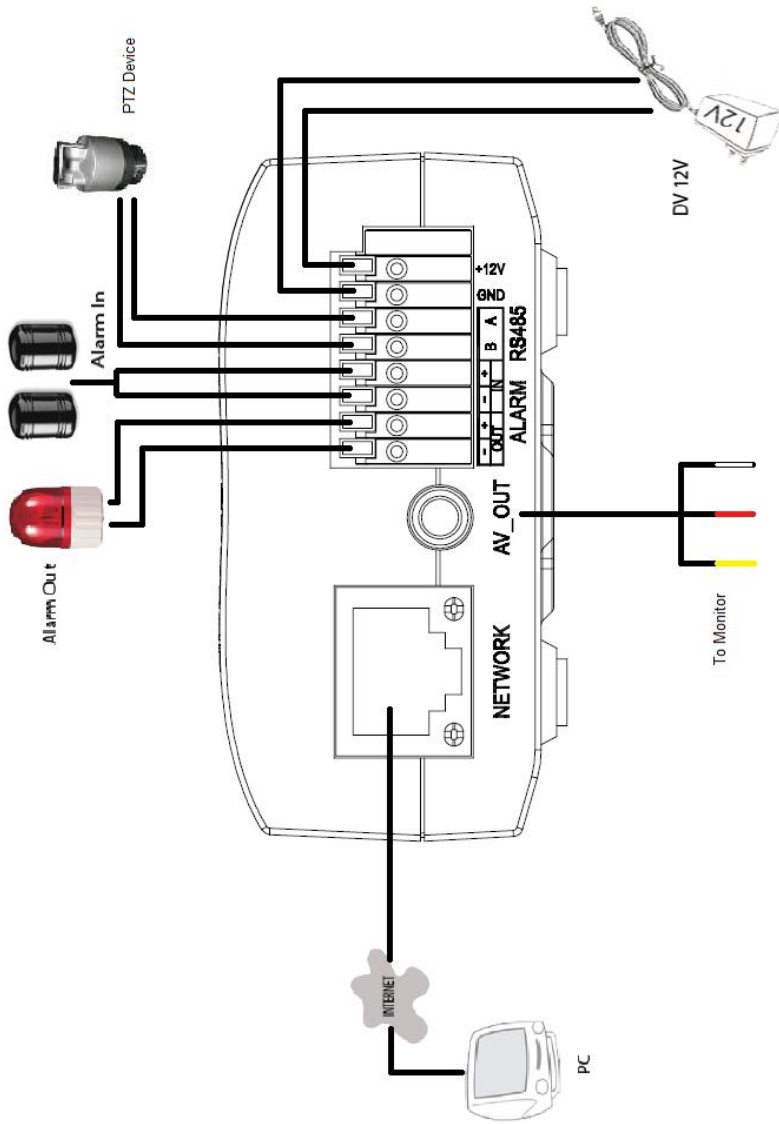


**Step 7:** Click through the menu on the left hand side of the web UI for more advanced configuration parameters.

Please download the user manual and FAQ for more detailed configuration instructions:  
[http://www.grandstream.com/support/gxv\\_series\\_surveillance/gxv3500/documents/gxv3500\\_usermanual\\_english.pdf](http://www.grandstream.com/support/gxv_series_surveillance/gxv3500/documents/gxv3500_usermanual_english.pdf)



# GXV3500 SAMPLE CONNECTION DIAGRAM



## **FCC Warnings:**

Any Changes or modifications not expressly approved by the party responsible for compliance could void the user's authority to operate the equipment.

This device complies with part 15 of the FCC Rules.

Operation is subject to the following two conditions:

- (1) This device may not cause harmful interference, and
- (2) this device must accept any interference received, including interference that may cause undesired operation.

This equipment has been tested and found to comply with the limits for a Class B digital device, pursuant to part 15 of the FCC Rules. These limits are designed to provide reasonable protection against harmful interference in a residential installation. This equipment generates uses and can radiate radio frequency energy and, if not installed and used in accordance with the instructions, may cause harmful interference to radio communications. However, there is no guarantee that interference will not occur in a particular installation. If this equipment does cause harmful interference to radio or television reception, which can be determined by turning the equipment off and on, the user is encouraged to try to correct the interference by one or more of the following measures:

---Reorient or relocate the receiving antenna.

---Increase the separation between the equipment and receiver.

---Connect the equipment into an outlet on a circuit different from that to which the receiver is connected.

---Consult the dealer or an experienced radio/TV technician for help.