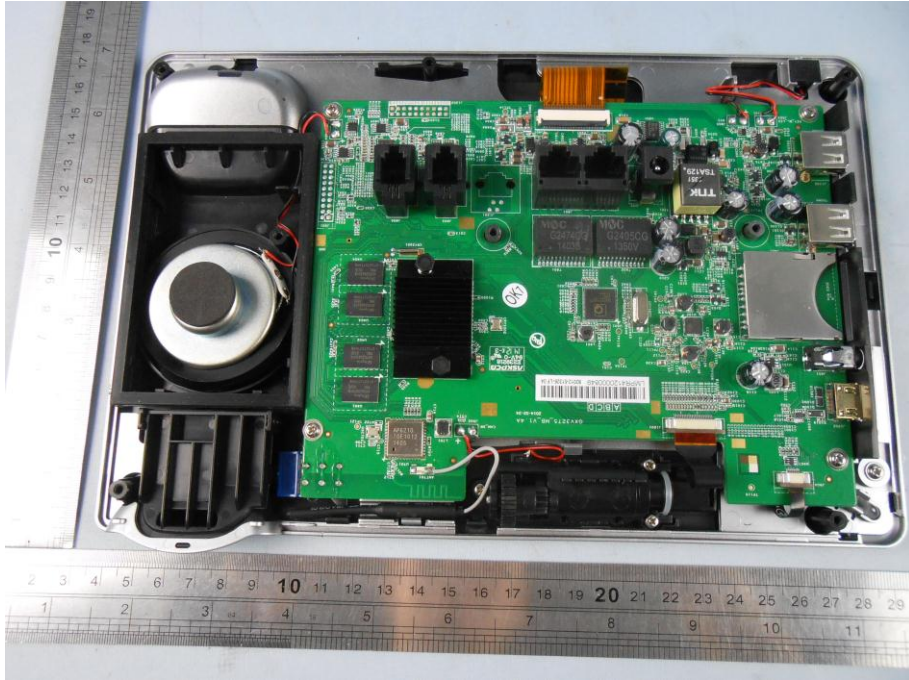
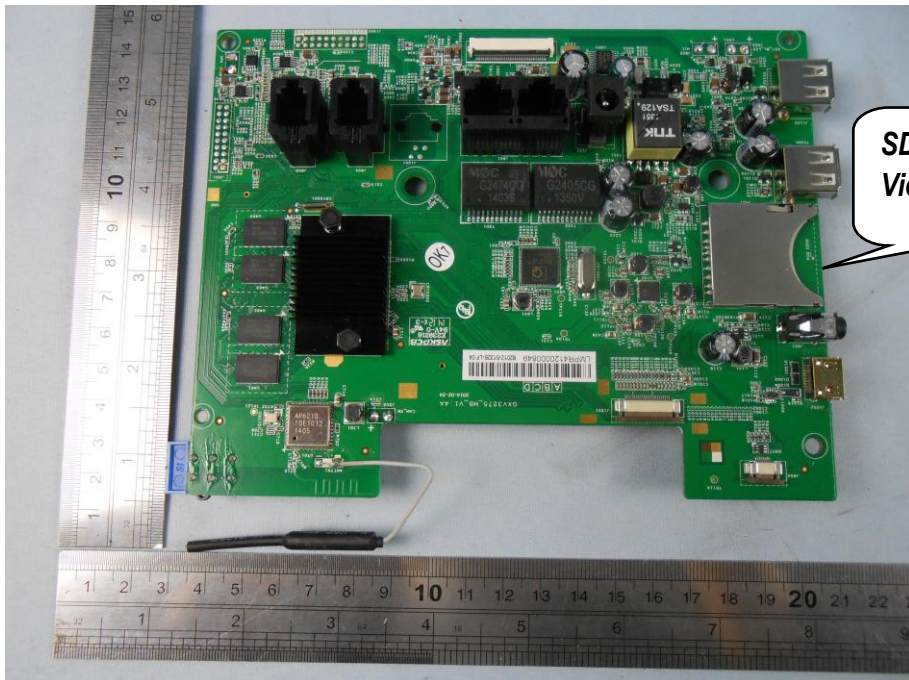


Internal Photographs

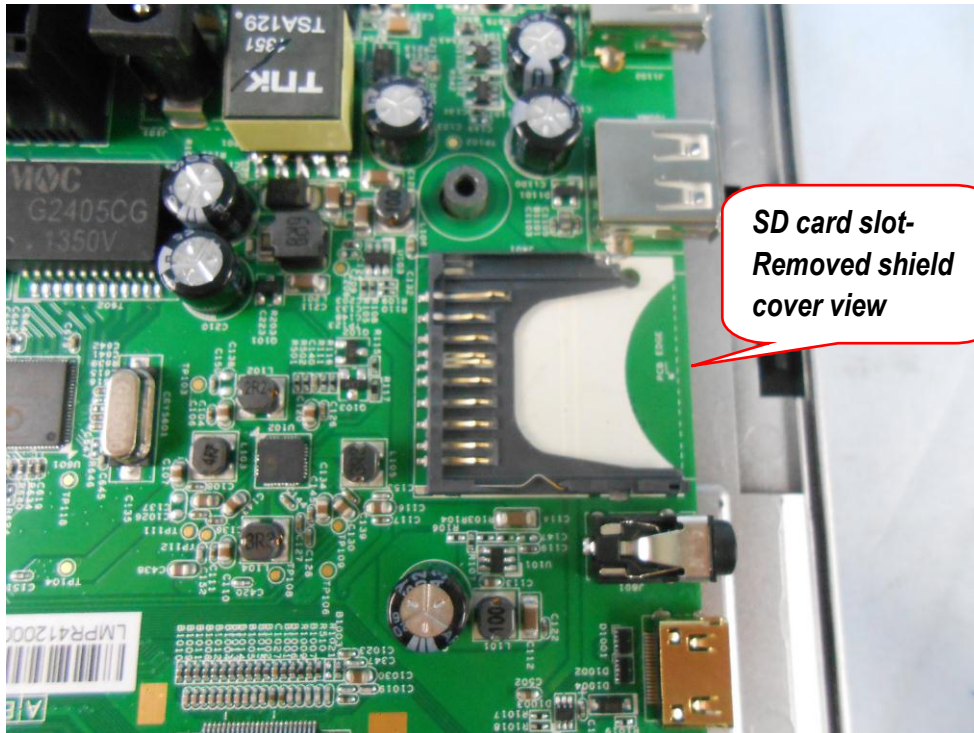
EUT Model:GXV3275



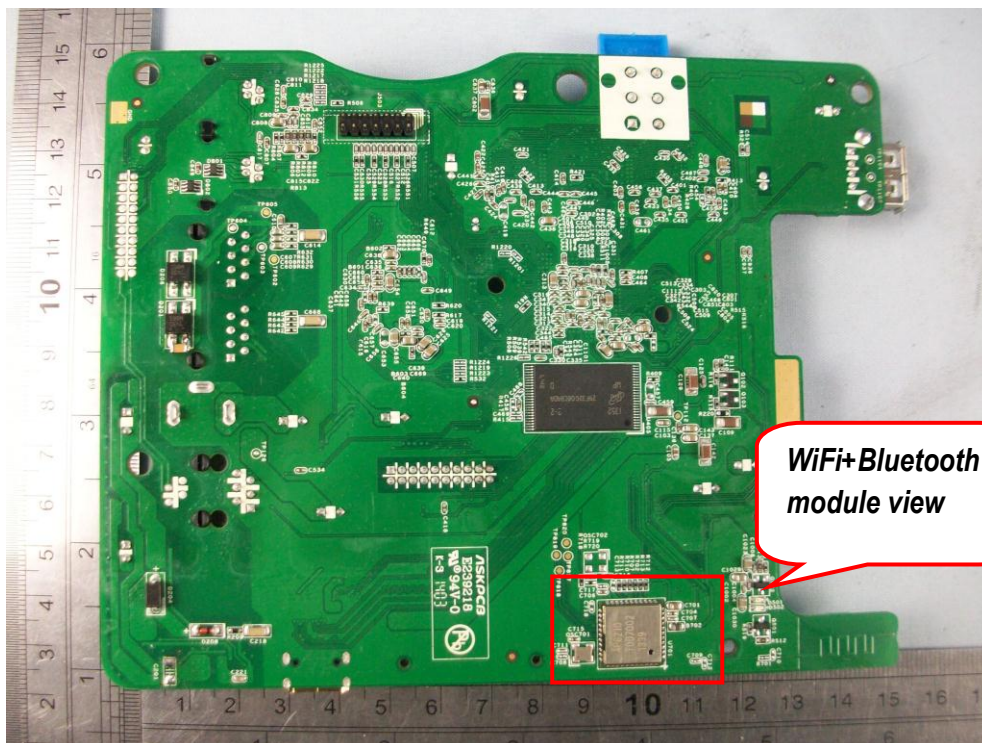
EUT-Uncovered View



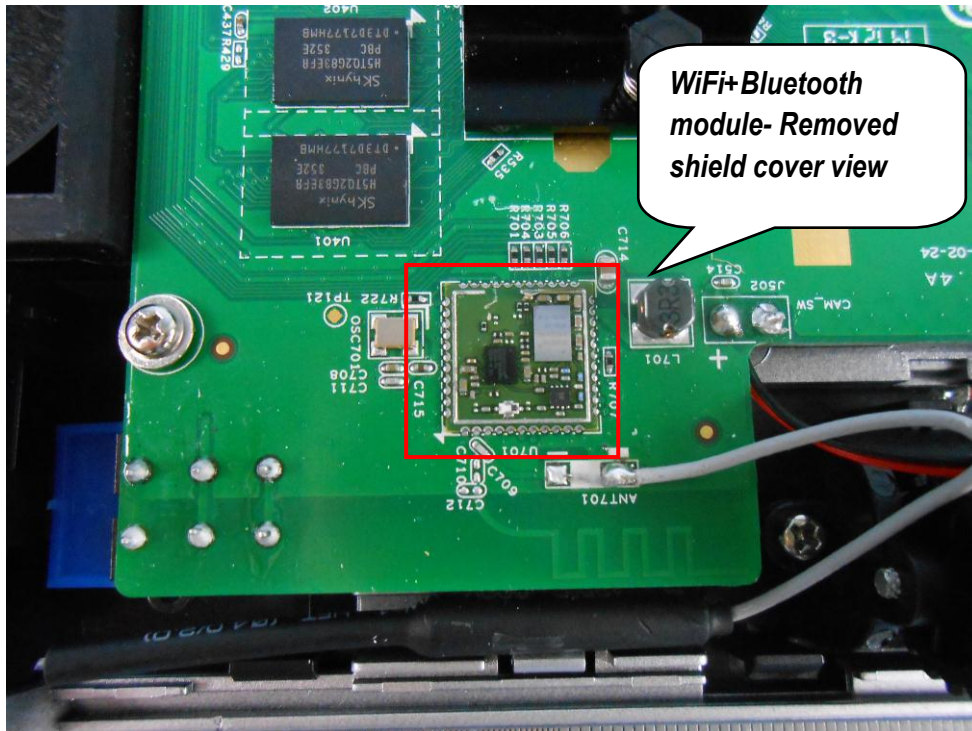
Main board- Top View #1



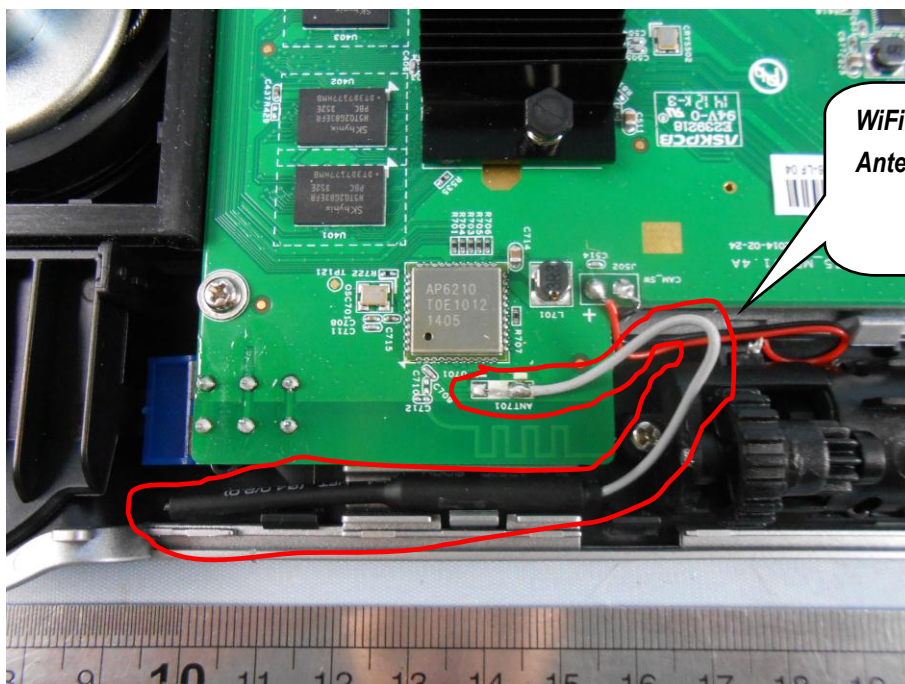
Main board- Top View #2



Main board- Bottom View #1

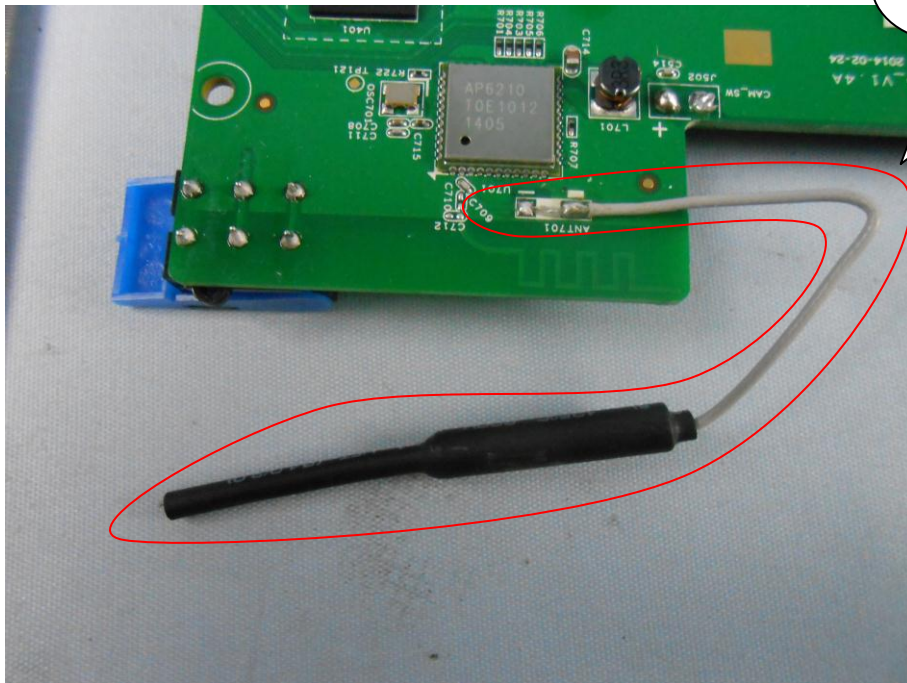


Main board- Bottom View #2



Antenna Location View

Red Area is an sole Antenna of this device It belongs to Pipe Copper Antenna which was used for transmitting and receiving signal. without other antenna assembled on this product.



WiFi+Bluetooth Antenna View



Handset inside view #1



Handset inside view #2