



Ke Mei Ou Lab Corp.

E506, 5th Floor, No.39 Keji Middle 2nd Rd, Science & Technology Park, Nanshan District, Shenzhen, P. R. China
Tel: + 86 755 83642690 Fax: + 86 755 83297077
www.kmolab.com

FCC TEST REPORT


Under:
FCC Part 15, Class B

Prepared For:

Grandstream Networks, Inc.

4th Floor, Rainbow Technology Building #16 New West Rd, Nanshan Science & Technology Park
(North District), Shenzhen, China 518057

FCC ID: YZZGXP16XX
EUT: IP Phone
Model: GXP1625

April 27, 2016 Issue Date:
Extension Report Report Type:
<i>Eric Guo</i> Test Engineer: Eric Guo
 Review By: Apollo Liu / Manager

The test report consists 26 pages in total. It may be duplicated completely for legal use with the allowance of the applicant. It shall not be reproduced except in full, without the written approval of Ke Mei Ou Laboratory Corporation. The test result in the report only applied to the tested sample.

TABLE OF CONTENTS

1. General Information	3
1. 1 Notes.....	3
1. 2 Testing Laboratory.....	3
1. 3 Details of Applicant.....	3
1. 4 Application Details	3
1. 5 Test Item	3
1. 6 Test Standards.....	3
2. Technical Test.....	4
2. 1 Summary of Test Results	4
2. 2 Measurement Uncertainty.....	4
3. Modifications	4
4. Conducted Power Line Test.....	5
4. 1 Test Equipment	5
4. 2 Test Procedure	5
4. 3 Test Setup	5
4. 4 Configuration of The EUT.....	6
4. 5 EUT Operating Condition.....	7
4. 6 Conducted Power Line Emission Limits	7
4. 7 Conducted Power Line Test Result.....	8
5. Radiated Emission Test.....	10
5. 1 Test Equipment	10
5. 2 Test Procedure	10
5. 3 Radiated Test Setup	10
5. 4 Configuration of The EUT.....	11
5. 5 EUT Operating Condition.....	11
5. 6 Radiated Emission Limit	11
5. 7 Radiated Emission Test Result.....	12
6. Photo of Testing.....	16
6.1 Emission test view.....	16
6.2 Photograph - EUT.....	18
7. FCC ID Label.....	25
8. Test Equipment.....	26

1. General Information

1.1 Notes

The test results of this report relate exclusively to the test item specified in 1.5. The KMO Lab does not assume responsibility for any conclusions and generalizations drawn from the test results with regard to other specimens or samples of the type of the equipment represented by the test item. The test report may only be reproduced or published in full. Reproduction or publication of extracts from the report requires the prior written approval of the KMO Lab.

1.2 Testing Laboratory

Ke Mei Ou Laboratory Co., Ltd.

ANSI-ASQ National Accreditation Board/ACLASS ISO/IEC 17025 Accredited Lab for telecommunication standards. The Registration Number is AT-1532. The testing quality system meets with ISO/IEC-17025 requirements, This approval results is accepted by MRA of ILAC.

FCC Test Site Registration Number: 962205

IC Test Site Registration Number: 4986A-2

Internet: www.kmolab.com

1.3 Details of Applicant

Name : Grandstream Networks, Inc.

Address : 4th Floor, Rainbow Technology Building #16 New West Rd, Nanshan Science & Technology Park (North District), Shenzhen, China 518057

1.4 Application Details

Date of Receipt of Application : April 19, 2016

Date of Receipt of Test Item : April 19, 2016

Date of Test : April 22~April 27, 2016

1.5 Test Item

Manufacturer : Same as applicant

Address : Same as applicant

Trade Name : Grandstream

Model No.(Base) : GXP1625

Model No.(Extension) : GXP1620,GXP1610, GXP1615

Description : IP Phone

Additional Information

Product Type : N/A

Radio Type : N/A

Power Type : DC 5.0V/0.6A(Adapter model:F06US0500060A)
DC 5.0V/0.6A(Adapter model:NBS05B050060VU)
POE DC 48V

Modulation : N/A

Data Modulation : N/A

Data Rate (Mbps) : N/A

Frequency Range : N/A

Channel Number : N/A

Antenna : N/A

1.6 Test Standards

FCC Part 15, Class B

Note: All radiated measurements were made in all three orthogonal planes. The values reported are the maximum values.

2. Technical Test

2.1 Summary of Test Results

The EUT has been tested according to the following specifications:

Standard	Test Type	Result	Notes
FCC Part 15, Paragraph 15.107	Conducted Test	PASS	Complies
FCC Part 15, Paragraph 15.109	Radiated Test	PASS	Complies

2.2 Measurement Uncertainty

Where relevant, the following measurement uncertainty levels have been estimated for tests performed on the EUT as specified in CISPR 16-4-2:

Measurement	Frequency	Uncertainty
Conducted emissions	0.15MHz~30MHz	1.72
Radiated emissions	30MHz ~ 300MHz	3.88
Radiated emissions	300MHz ~1000MHz	3.86

This uncertainty represents an expanded uncertainty expressed at approximately the 95% confidence level using a coverage factor of $k=2$.

Consistent with industry standard (e.g. CISPR 22: 2006, clause 11, Measurement Uncertainty) determining compliance with the limits shall be base on the results of the compliance measurement. Consequently the measure emissions being less than the maximum allowed emission result in this be a compliant test or passing test.

The acceptable measurement uncertainty value without requiring revision of the compliance statement is base on conducted and radiated emissions being less than U_{CISPR} which is 3.6dB and 5.2dB respectively. KMO values (called U_{Lab} in CISPR 16-4-2) is less than U_{CISPR} as shown in the table above. Therefore, MU need not be considered for compliance.

3. Modifications

This product is an extension of original report under FCC ID: YZZGXP16XX

The applicant declare that the reasons for this Class II permissive change as below:

- 1)The plastic case is the same as GXP1625;
- 2)Main board is the same as GXP1625;
- 3)Others materials is the same as GXP1610

Anything else are the same as before.

4. Conducted Power Line Test

4.1 Test Equipment

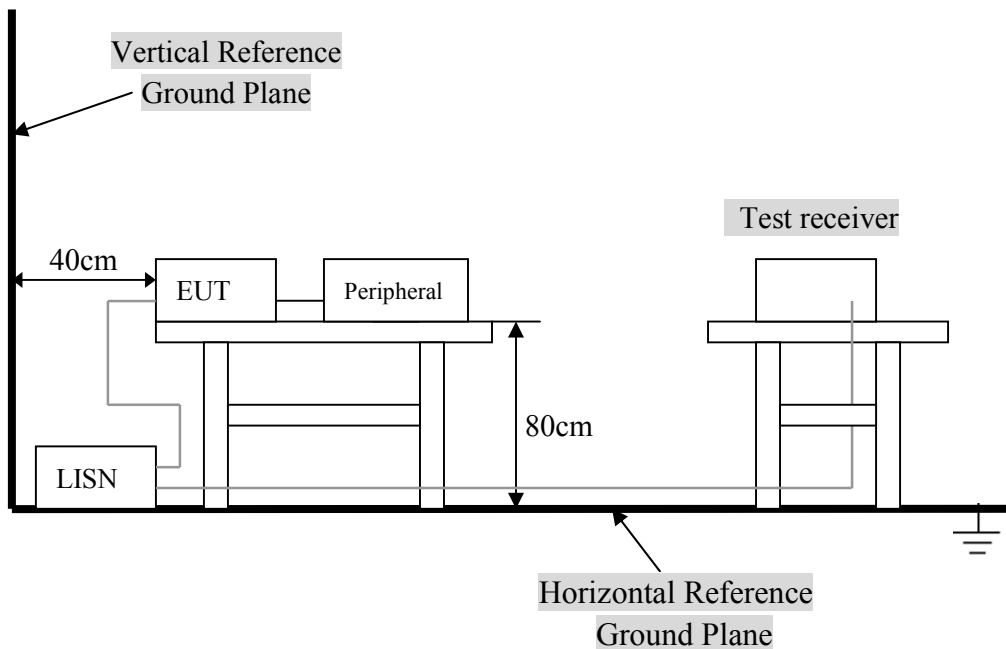
Please refer to Section 8 this report.

4.2 Test Procedure

The EUT and simulators are connected to the main power through a line impedance stabilization network (L.I.S.N.). This provides a 50 ohm/50uH coupling impedance for the measuring equipment. The peripheral devices are also connected to the main power through a LISN that provides a 50ohm/50uH coupling impedance with 50ohm termination.

Both sides of A.C. line are checked for maximum conducted interference. In order to find the maximum emission., the relative positions of equipment and all of the interface cables must be changed according to ANSI C63.4:2014 on conducted measurement. Conducted emissions were investigated over the frequency range from 0.15MHz to 30MHz using a receiver bandwidth of 9kHz.

4.3 Test Setup



For the actual test configuration, Please refer to the related items – Photos of Testing.

4.4 Configuration of The EUT

The EUT was configured according to ANSI C63.4:2014. All interface ports were connected to the appropriate peripherals. All peripherals and cables are listed below.

A. EUT

Device	Manufacturer	Model #	FCC ID
IP Phone	Same as applicant	GXP1625	YZZGXP16XX

B. Internal Devices

Device	Manufacturer	Model #	FCCID / DoC
N/A			

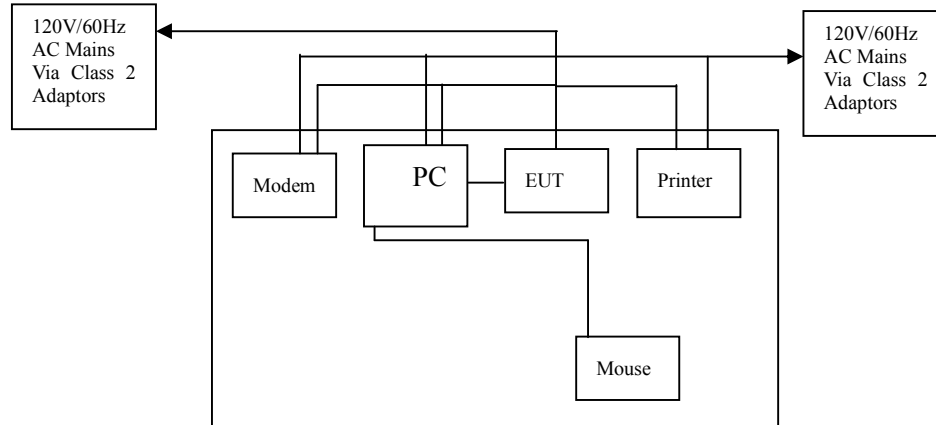
C. Peripherals

Device	Manufacturer	Model # Serial #	FCC ID/ DoC	Cable
Printer	HP	HP930C	DoC	1.5m unshielded power cord 1.2m unshielded data cable.
Modem	GVC	N/A	DoC	1.5m unshielded power cord 1.2m unshielded data cable.
Notebook	DELL	PP10L	DoC	1.5m unshielded power cord
PC	Dell	2400n	DoC	1.5m unshielded power cord

4.5 EUT Operating Condition

Operating condition is according to ANSI C63.4:2014.

- A. Setup the EUT and simulators as shown on follow.
- B. Enable RF signal and confirm EUT active.
- A. Modulate output capacity of EUT up to specification.



4.6 Conducted Power Line Emission Limits

Frequency Range (MHz)	Class A QP/AV (dBuV)	Class B QP/AV (dBuV)
0.15 – 0.5	79/66	66 –56/56 –46
0.5 – 5.0	73/60	56/46
5.0 – 30	73/60	60/50

Note: In the above table, the tighter limit applies at the band edges.

4.7 Conducted Power Line Test Result

Product	: IP Phone	Test Mode	: Normal Link / Auto
Test Item	: Conducted Emission Data	Temperature	: 25 °C
Test Voltage	: DC 5V	Humidity	: 56%RH
Test Result	: PASS	Adapter Model	:

The frequency spectrum from 0.15 MHz to 30 MHz was investigated. All readings are quasi -peak values with a resolution bandwidth of 9 KHz.

. Temperature : 26 °C
 . Humidity : 53 % RH

Adapter model: F06US0500060A

FCC 15 Class B										
Frequency (MHz)	Read Level (dBuV)		Factor (dB)	Emission (dBuV)		Line/Neutral	Limit (dBuV)		Margin (dBuV)	
	QP	AV		QP	AV		QP	AV	QP	AV
0.150	30.91	20.15	10.30	41.21	30.45	Line	66.00	56.00	-24.79	-25.55
0.154	29.67	19.22	10.30	39.97	29.52	Neutral	65.78	55.78	-25.81	-26.26
0.162	28.57	18.51	10.30	38.87	28.81	Line	65.36	55.36	-26.49	-26.55
0.170	29.12	19.18	10.30	39.42	29.48	Neutral	64.96	54.96	-25.54	-25.48
0.190	27.65	18.16	10.30	37.95	28.46	Line	64.04	54.04	-26.09	-25.58
0.410	26.59	22.18	10.40	36.99	32.58	Neutral	57.65	47.65	-20.66	-15.07

FCC 15 Class B & EN55022 Class B

Note: NF = No Significant Peak was Found.

Adapter model: NBS05B050060VU

FCC 15 Class B										
Frequency (MHz)	Read Level (dBuV)		Factor (dB)	Emission (dBuV)		Line/Neutral	Limit (dBuV)		Margin (dBuV)	
	QP	AV		QP	AV		QP	AV	QP	AV
0.150	25.48	17.44	10.30	35.78	27.74	Line	66.00	56.00	-30.22	-28.26
0.406	21.75	16.39	10.40	32.15	26.79	Neutral	57.73	47.73	-25.58	-20.94
0.514	28.07	20.63	10.40	38.47	31.03	Line	56.00	46.00	-17.53	-14.97
0.490	27.28	22.85	10.40	37.68	33.25	Neutral	56.17	46.17	-18.49	-12.92
12.234	24.01	13.15	10.80	34.81	23.95	Line	60.00	50.00	-25.19	-26.05
0.522	29.99	25.36	10.40	40.39	35.76	Neutral	56.00	46.00	-15.61	-10.24

FCC 15 Class B

Note: NF = No Significant Peak was Found.

Note:

- 1.Uncertainty in conducted emission measured is <+/- 2dB.
- 2.The emission levels of other frequencies were very low against the limit.
- 3.All Reading Levels are Quasi-Peak and Average value.
- 4.Emission = Meter Reading + Factor; Factor = Insertion Loss + Cable Loss.
- 5.Margin Value = Emission Level - Limit Value.

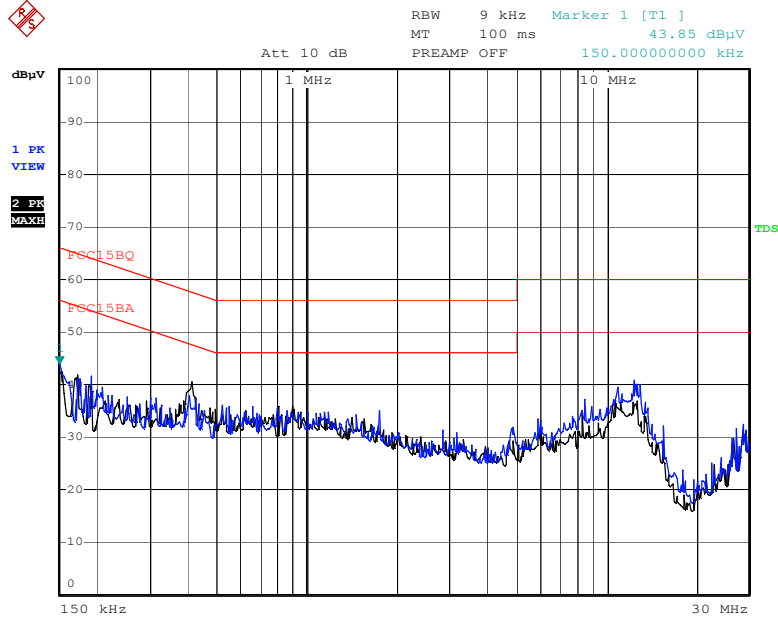
Conducted Emission

FCC 15.107

Test Specification: LINE&NEUTRAL

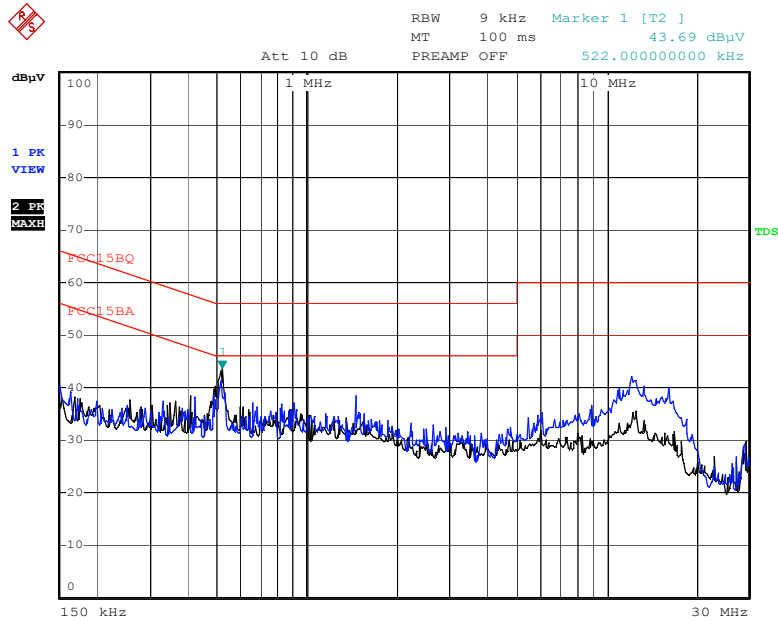
Comment:

Adapter model: F06US0500060A



Date: 25.APR.2016 13:58:50

Adapter model: NBS05B050060VU



Date: 25.APR.2016 14:07:59

5. Radiated Emission Test

5.1 Test Equipment

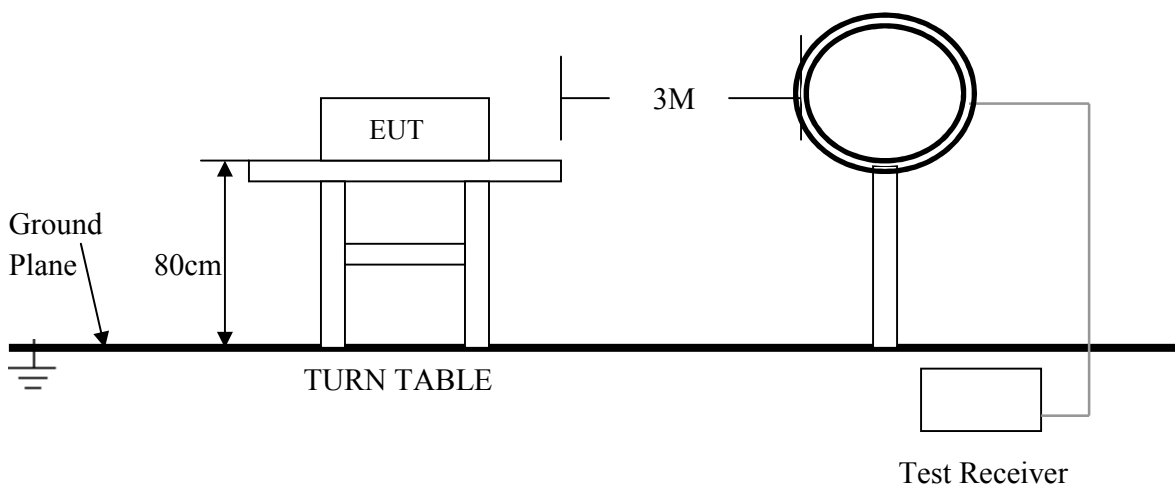
Please refer to Section 8 this report.

5.2 Test Procedure

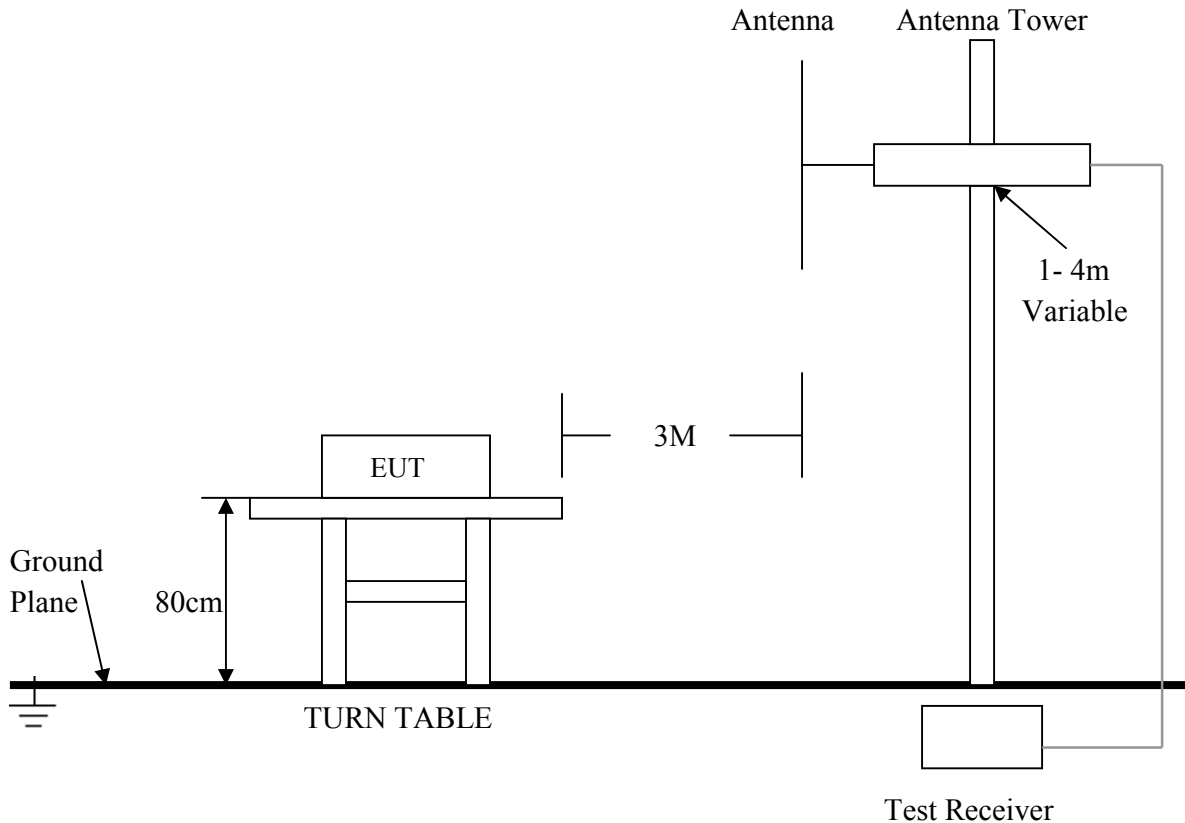
1. The EUT was tested according to ANSI C63.4:2014.
2. The EUT, peripherals were put on the turntable which table size is 1m x 1.5 m, table high 0.8 m, and which is 1.5 m high for above 1 GHz. All set up is according to ANSI C63.4:2014 .
3. The frequency spectrum from 9 kHz to 25 GHz was investigated. All readings from 9 kHz to 150 kHz are quasi-peak values with a resolution bandwidth of 200 Hz. All readings from 150 kHz to 30 MHz are quasi-peak values with a resolution bandwidth of 9 KHz. All readings from 30 MHz to 1 GHz are quasi-peak values with a resolution bandwidth of 120 KHz. All readings are above 1 GHz , peak values with a resolution bandwidth of 1 MHz . Measurements were made at 3 meters.
4. The emissions from the EUT were measured continuously at every azimuth by rotating the turntable. The Receiving antenna high is varied from 1 m to 4 m high to find the maximum emission for each frequency. Emissions below 30MHz were measured with a loop antenna while emission above 30MHz were measured using a broadband E-field antenna.
5. Maximizing procedure was performed on the six (6) highest emissions to ensure EUT compliance is with all installation combinations. All data was recorded in the peak detection mode. Quasi-peak readings was performed only when an emission was found to be marginal (within -4 dB of specification limit), and are distinguished with a "QP" in the data table.
6. Each emission was to be maximized by changing the polarization of receiving antenna both horizontal and vertical. In order to find out the max. emission, the relative positions of this transmitter(EUT) was rotated through three orthogonal axes according to the requirements in Section 8 and 13 of ANSI C63.4:2014

5.3 Radiated Test Setup

For Frequencies below 30 MHz



For the actual test configuration , please refer to the related items – Photos of Testing

For Frequencies above 30 MHz

For the actual test configuration , please refer to the related items – Photos of Testing

5. 4 Configuration of The EUT

Same as section 4.4 of this report

5. 5 EUT Operating Condition

Same as section 4.5 of this report

5. 6 Radiated Emission Limit

All emission from a digital device, including any network of conductors and apparatus connected thereto, shall not exceed the level of field strength specified below:

Frequencies in restricted band are complied to limit on Paragraph 15.109.

Frequency (MHz)	Distance (m)	Field Strength (dBuV/m)
30 - 88	3	40.0
88 - 216	3	43.5
216 - 960	3	46.0
Above 960	3	54.0

Note:

1. In the emission tables above, the tighter limit applies at the band edges.
2. Distance refers to the distance between measuring instrument, antenna, and the closest point of any part of the device or system.
3. The lower limit shall apply at the transition frequencies.

5.7 Radiated Emission Test Result

Product	: IP Phone	Test Mode	: Normal Link / Auto
Test Item	: Fundamental Radiated Emission Data	Temperature	: 25 °C
Test Voltage	: DC 5V/POE	Humidity	: 56%RH
Test Result	: PASS	Model	:

For Frequency below 30MHz

Freq. (MHz)	Emission (dBuV/m) QP Detector	HORIZ / VERT	Limits (dBuV/m)	Margin (dB)
N/A				
N/A				
N/A				
N/A				
N/A				
N/A				

- Note:**
- (1) All Readings below 1GHz are Quasi-Peak, above are performed with peak and/or average measurements as necessary.
 - (2) "N/A" remark, if no specific emissions from the EUT are recorded (ie: margin>20dB from the applicable limit) and considered that's already beyond the background noise floor.
 - (3) Emission Level = Reading Level + Probe Factor + Cable Loss.

For Frequency from 30MHz to 1GHz

Adapter model: F06US0500060A

FCC 15 Class B						
Frequency (MHz)	Read Level (dBuV)	Factor (dB)	Emission (dBuV/m)	Horiz./ Vert.	Limit (dBuV/m)	Margin (dB)
250.000	19.48	14.94	34.42	Horiz./	46.0	-11.58
94.320	22.89	7.93	30.82	Vert.	43.5	-12.68
375.000	14.78	20.91	35.69	Horiz./	46.0	-10.31
250.000	16.41	14.94	31.35	Vert.	46.0	-14.65
403.120	24.97	15.59	40.56	Horiz./	46.0	-5.44
669.840	13.17	18.87	32.04	Vert.	46.0	-13.96

Adapter model: NBS05B050060VU

FCC 15 Class B						
Frequency (MHz)	Read Level (dBuV)	Factor (dB)	Emission (dBuV/m)	Horiz./ Vert.	Limit (dBuV/m)	Margin (dB)
250.040	18.31	14.94	33.25	Horiz./	46.0	-12.75
98.480	21.36	7.93	29.29	Vert.	43.5	-14.21
375.000	16.11	20.91	37.02	Horiz./	46.0	-8.98
250.000	16.74	14.94	31.68	Vert.	46.0	-14.32
403.120	25.83	15.59	41.42	Horiz./	46.0	-4.58
550.000	18.73	17.29	36.02	Vert.	46.0	-9.98

POE

FCC 15 Class B						
Frequency (MHz)	Read Level (dBuV)	Factor (dB)	Emission (dBuV/m)	Horiz./Vert.	Limit (dBuV/m)	Margin (dB)
250.000	23.79	14.94	38.73	Horiz./	46.0	-7.27
125.000	19.30	13.83	33.13	Vert.	43.5	-10.37
403.120	26.52	15.59	42.11	Horiz./	46.0	-3.89
250.000	25.65	14.94	40.59	Vert.	46.0	-5.41
425.000	22.72	15.59	38.31	Horiz./	46.0	-7.69
550.000	19.13	17.29	36.42	Vert.	46.0	-9.58

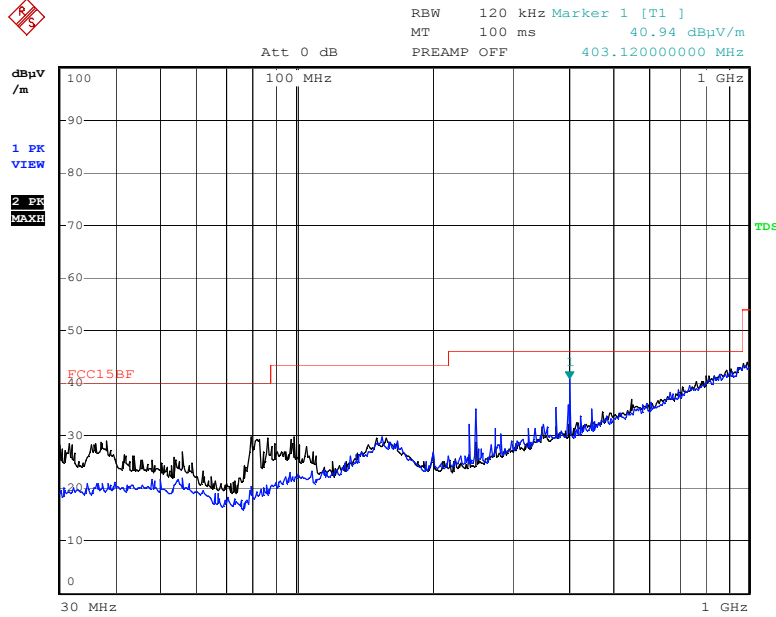
- Note:**
- (1) All Readings below 1GHz are Quasi-Peak, above are performed with peak and/or average measurements as necessary.
 - (2) "N/A" remark, if no specific emissions from the EUT are recorded (ie: margin>20dB from the applicable limit) and considered that's already beyond the background noise floor.
 - (3) Emission Level = Reading Level + Probe Factor + Cable Loss.

Frequency above 1 GHz

FCC 15 Class B										
Frequency (MHz)	Read Level(dBuV)		Factor (dB)	Emission(dBuV/m)		Horiz./Vert.	Limit (dBuV/m)		Margin(dB)	
	PK	AV		PK	AV		PK	AV	PK	AV
1594.800	20.21	6.67	20.91	41.12	27.58	Horiz./	74.0	54.0	-32.88	-26.42
1596.800	36.30	15.89	12.06	48.36	27.95	Vert.	74.0	54.0	-25.64	-26.05
2415.600	26.65	10.96	20.91	47.56	31.87	Horiz./	74.0	54.0	-26.44	-22.13
2204.000	30.41	16.85	14.94	45.35	31.79	Vert.	74.0	54.0	-28.65	-22.21
2828.800	28.85	15.48	18.87	47.72	34.35	Horiz./	74.0	54.0	-26.28	-19.65
2767.200	29.66	16.49	17.29	46.95	33.78	Vert.	74.0	54.0	-27.05	-20.22

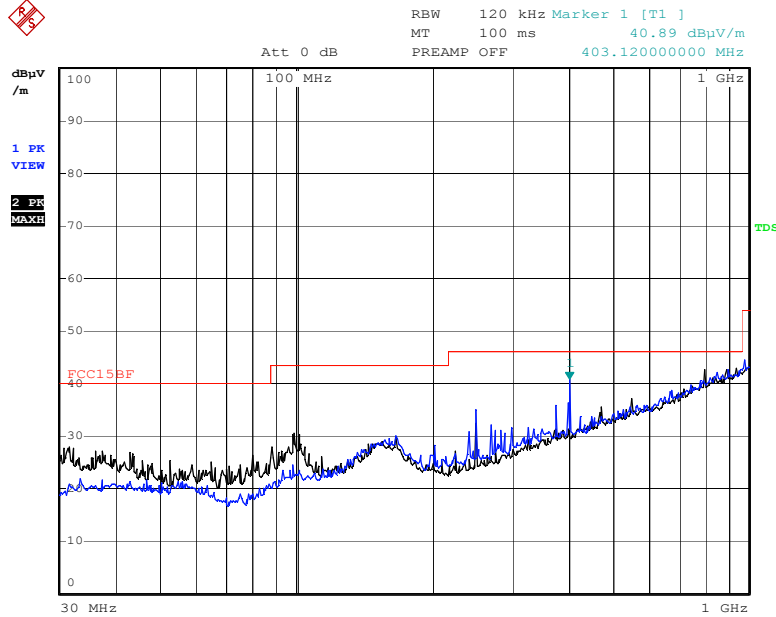
- Note:**
- (1) All Readings below 1GHz are Quasi-Peak, above are performed with peak and/or average measurements as necessary.
 - (2) Emission Level = Reading Level + Probe Factor + Cable Loss.

Radiated Emission
FCC 15.109
For Frequency from 30MHz to 1GHz
Adapter model: F06US0500060A



Date: 25.APR.2016 11:26:52

Adapter model: NBS05B050060VU

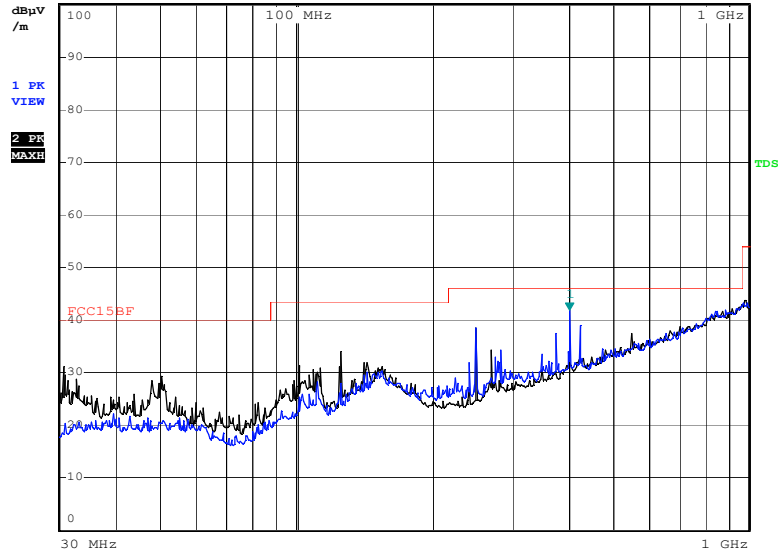


Date: 25.APR.2016 11:19:07

POE



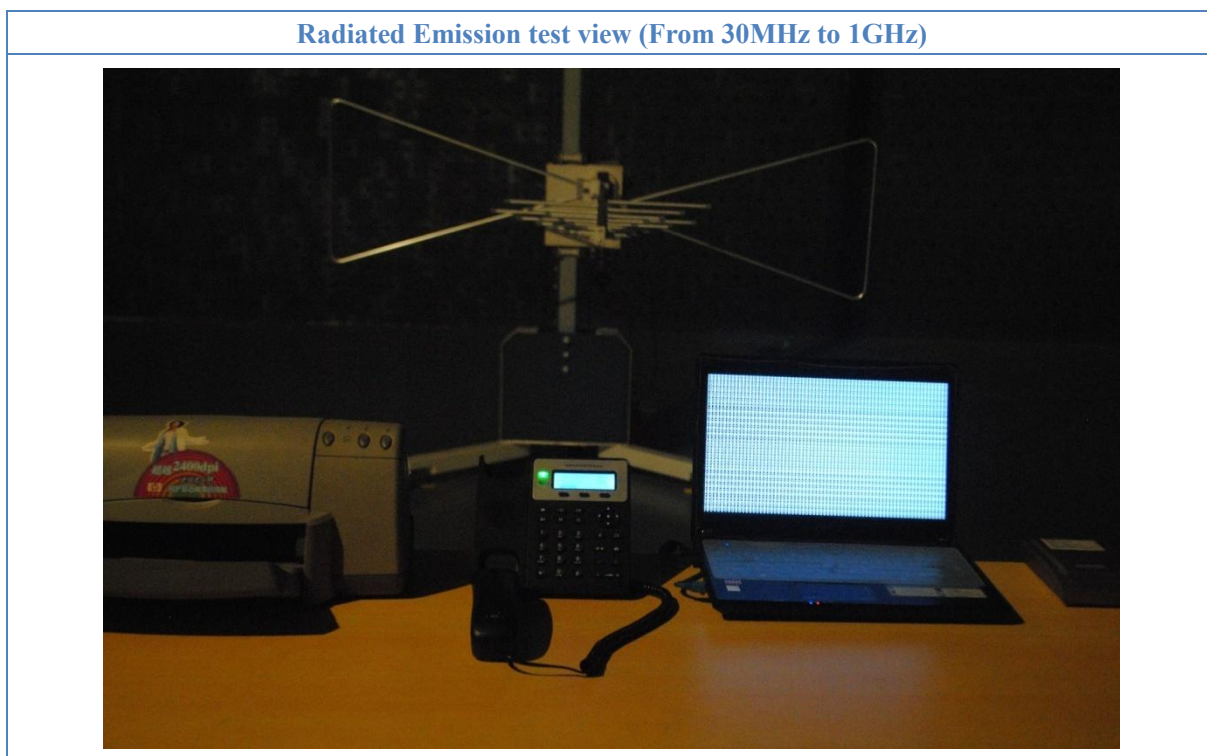
RBW 120 kHz Marker 1 [T1]
MT 100 ms 41.75 dBuV/m
PREAMP OFF 403.12000000 MHz



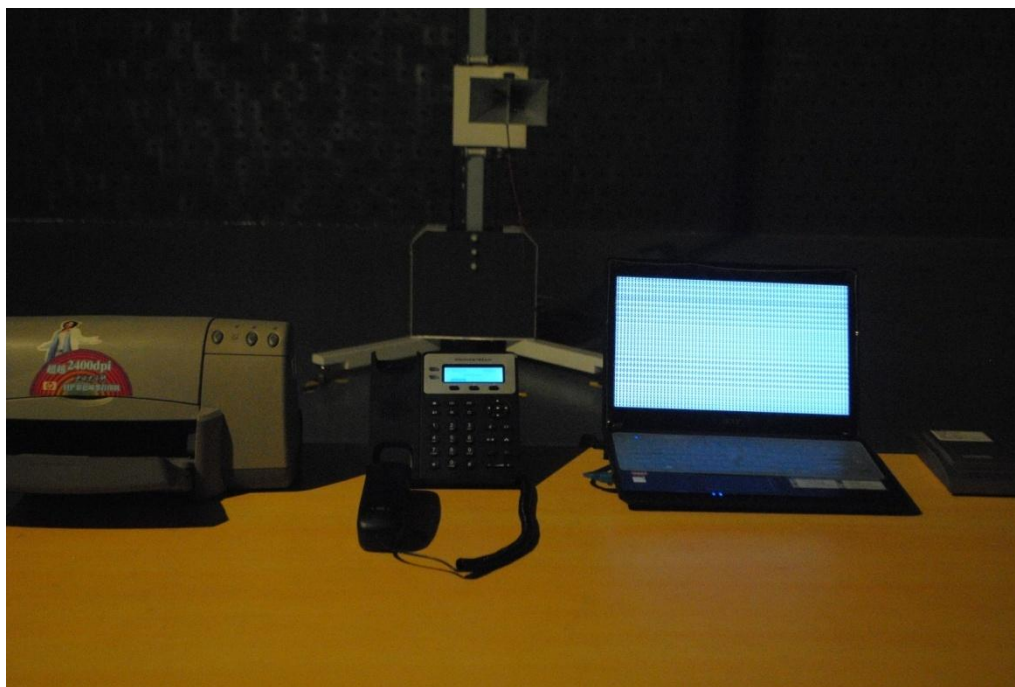
Date: 27.APR.2016 14:11:33

6. Photo of Testing

6.1 Emission test view



Radiated Emission test view (Above 1GHz)



6.2 Photograph - EUT

GXP1615 EUT top view



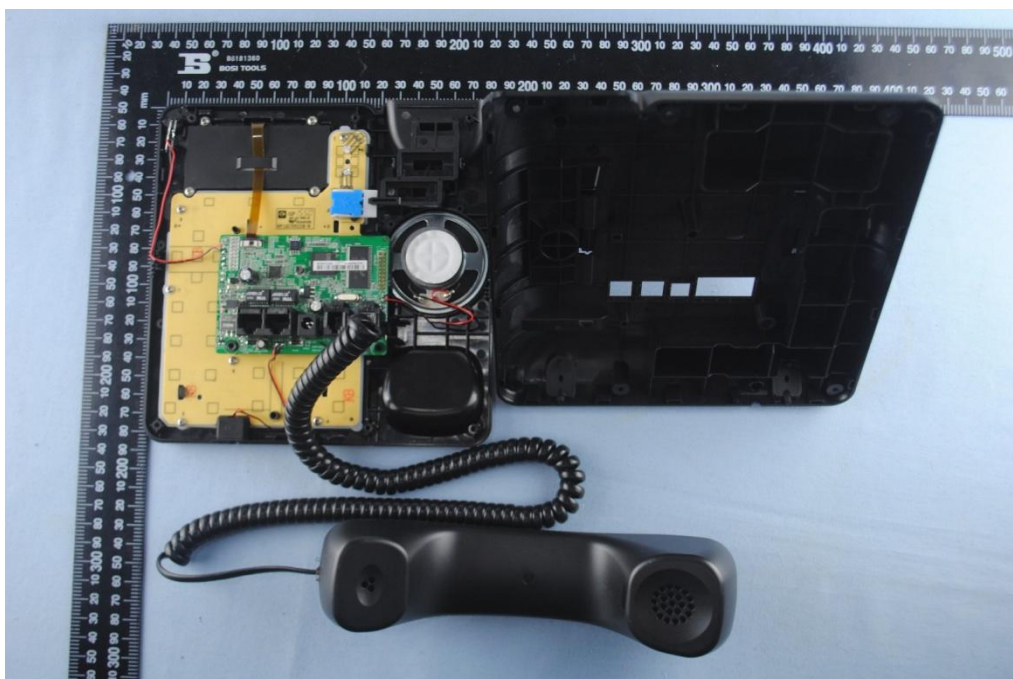


EUT bottom view

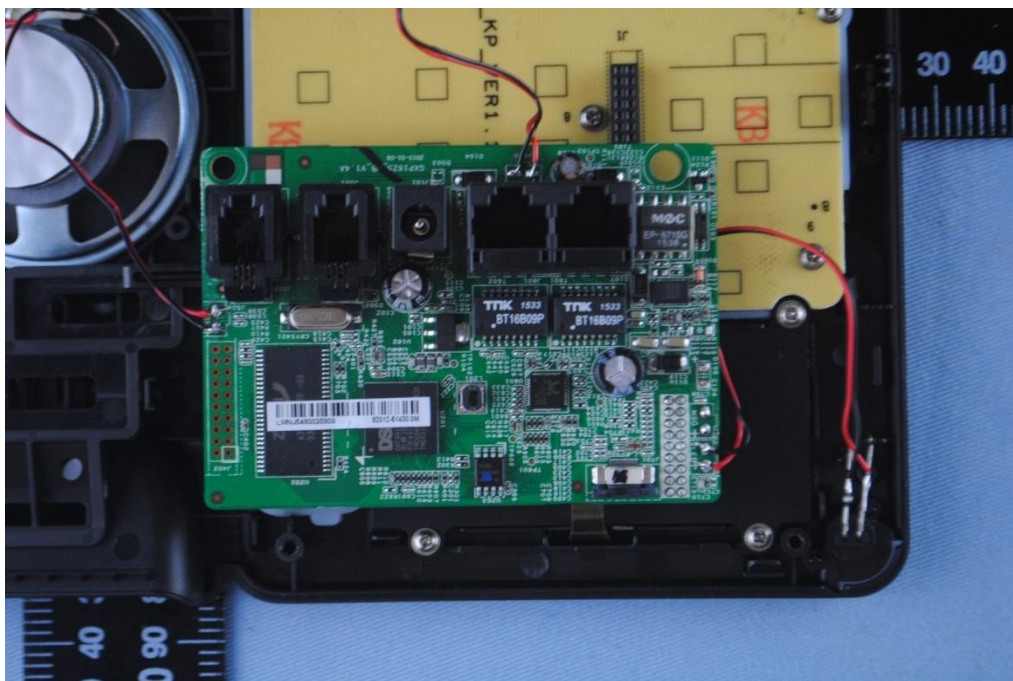




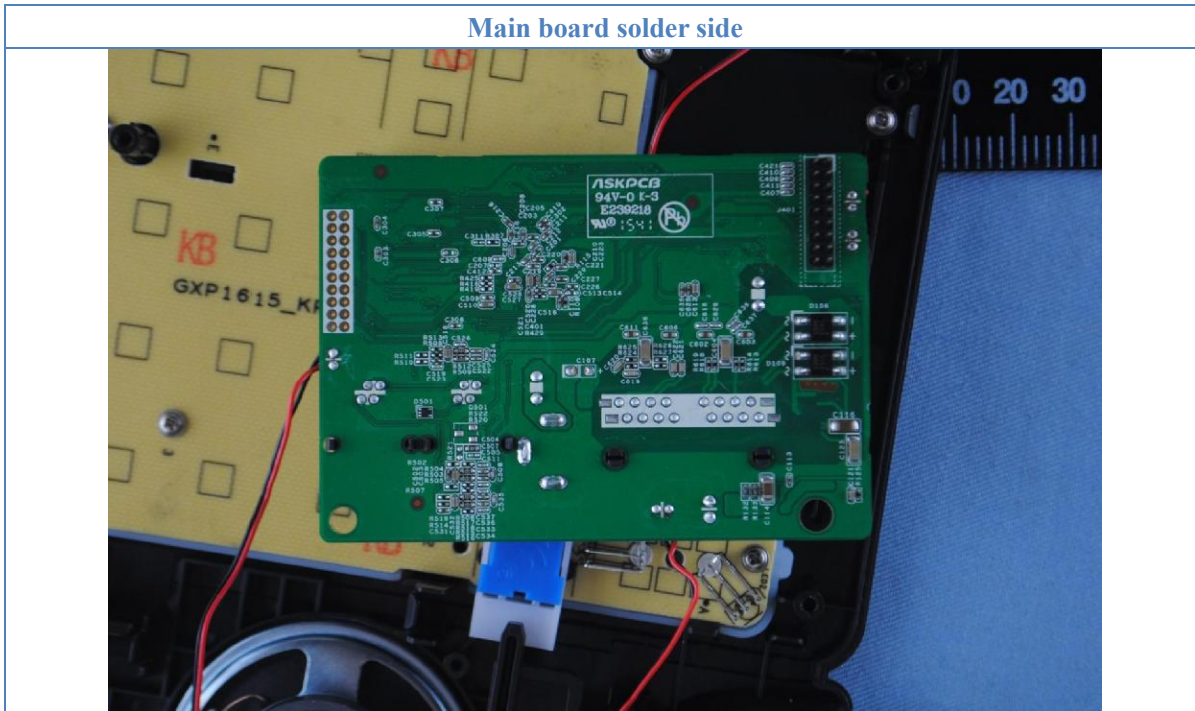
EUT inside whole view



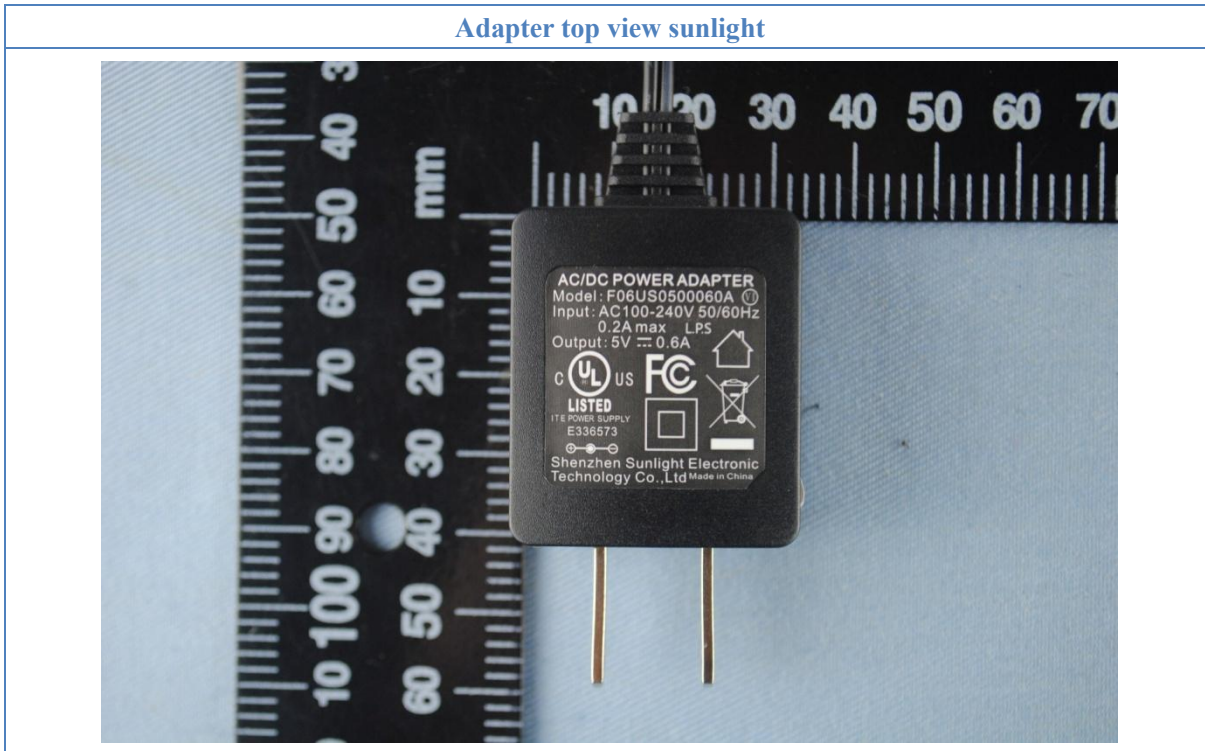
Main board component side



Main board solder side



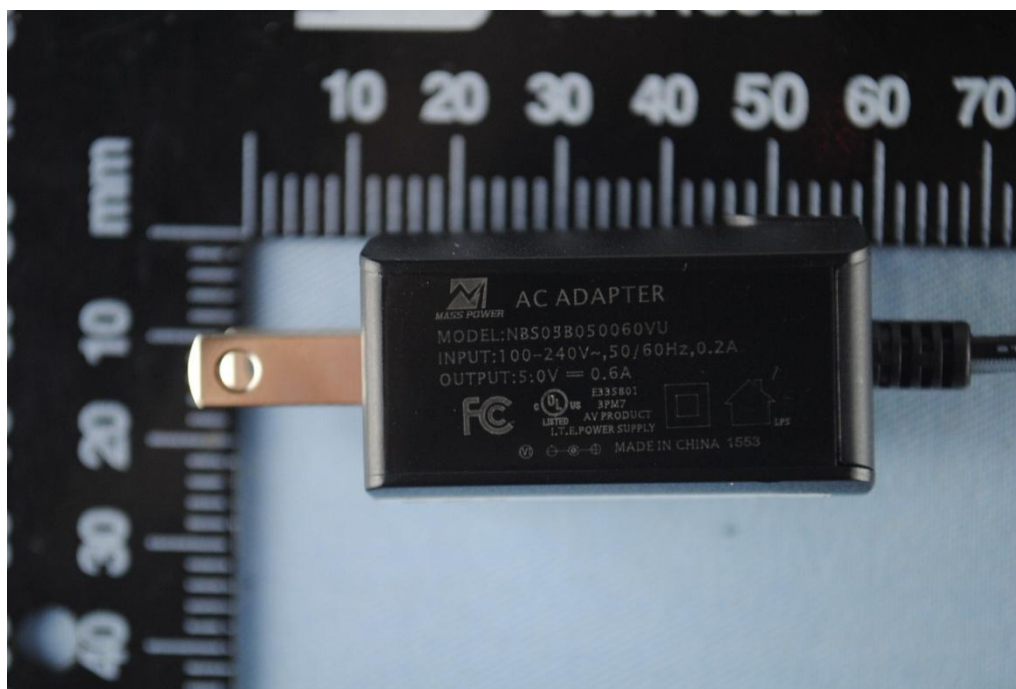
Adapter top view sunlight



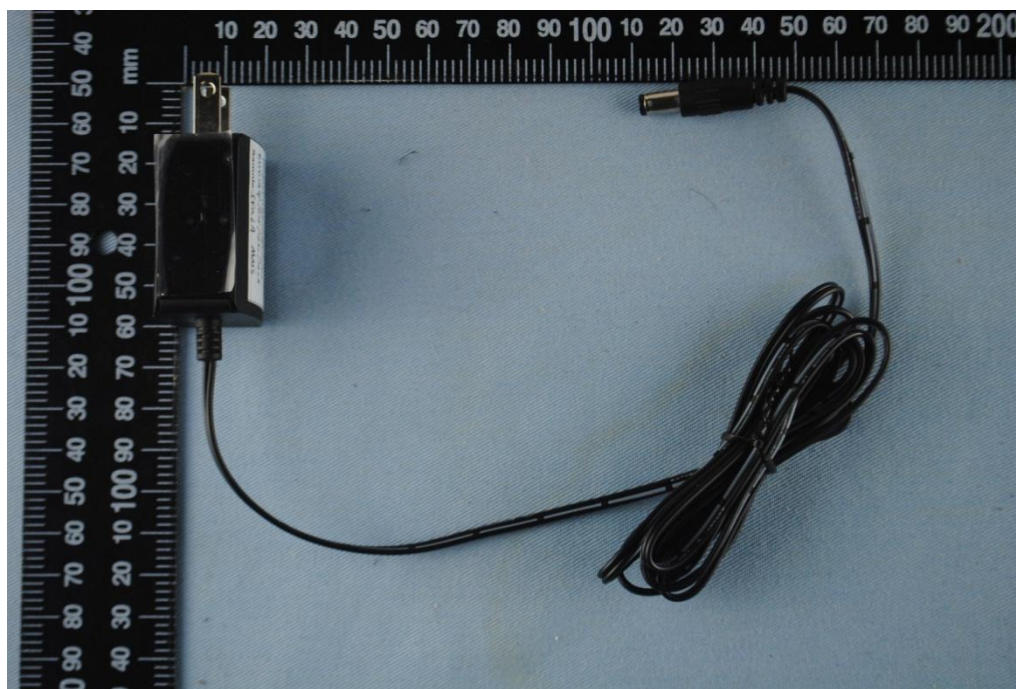
Adapter side view



Adapter top view mass



Adapter side view



7. FCC ID Label



The following note shall be conspicuously placed in the users manual: **“Operation is subject to the following two conditions: (1) this device may not cause interference, and (2) this device must accept any interference, including interference that may cause undesired operation of this device.”**

The Label must not be a stick-on paper label. The Label on these products must be permanently affixed to the product and readily visible at the time of purchase and must last the expected lifetime of the equipment not be readily detachable.

Proposed Label Location on EUT



8. Test Equipment

The following test equipments were used during the radiated & conducted emission test:

Equipment/ Facilities	Manufacturer	Model #	Serial No.	Due Date
Turntable	Innco systems GmbH	CT-0801	KMO-SZ114	NCR
Antenna Tower	Innco systems GmbH	MM4000-PP	KMO-SZ115	NCR
Controller	Innco systems GmbH	CO2000	KMO-SZ116	NCR
Pre-Amplifier	Agilent	87405C	KMO-SZ155	Dec.6, 2016
Pre-Amplifier	Com-Power	PAM-840	KMO-SZ156	Dec.6, 2016
Horn Antenna	Com-Power	AH-840	KMO-SZ157	Dec.6, 2016
EMI Test Receiver	Rohde & Schwarz	ESPI7	KMO-SZ002	June 27, 2016
Spectrum Analyzer	Rohde & Schwarz	FSP40	KMO-SZ003	June 27, 2016
Signal Generator	FLUKE	PM5418+Y/C	KMO-SZ020	May 27, 2016
Loop Antenna	Rohde & Schwarz	HFH2-Z2	KMO-SZ004	August 19, 2018
Trilog-Super Broadband Antenna	SCHWARZBECK	VULB9161	KMO-SZ005	August 27, 2018
Trilog-Super Broadband Antenna	SCHWARZBECK	VULB9161	KMO-SZ006	August 19, 2018
Broad-Band Horn Antenna	SCHWARZBECK	BBHA 9120D	KMO-SZ007	August 19, 2018
Broad-Band Horn Antenna	SCHWARZBECK	BBHA 9120D	KMO-SZ008	August 19, 2018
AMN	Rohde & Schwarz	ESH3-Z5	KMO-SZ009	June 27, 2016
Pulse Limiter	SCHWARZBECK	VTSD 9561-F	KMO-SZ077	Nov.29, 2016
ISN	SCHWARZBECK	NTFM 8158 CAT3	KMO-SZ070	Nov.19, 2016
ISN	SCHWARZBECK	NTFM 8158 CAT5	KMO-SZ071	Nov.19, 2016
ISN	SCHWARZBECK	NTFM 8158 CAT6	KMO-SZ072	Nov.19, 2016
KMO Shielded Room	KMO	KMO-001	KMO-SZ036	NCR
Coaxial Cable with N-Connectors	SCHWARZBECK	AK9515H	KMO-SZ037	Sep.18, 2016
AC Power Source / Analyzer	Agilent	6813B	KMO-SZ166	July 22, 2016
Power Meter	Rohde & Schwarz	OSP-B157	KMO-HK015	Nov.6, 2016
Digital Radio Communication Tester	Rohde & Schwarz	CMD60	KMO-SZ169	April 10, 2017
Universal Radio Communication Tester	Rohde & Schwarz	CMU200	KMO-SZ170	April 10, 2017
Regulatory Test System 30 MHz to 40 GHz	Rohde & Schwarz	TS8997	KMO-HK015	Nov.6, 2016
Program Control Telephone Exchanger	Excelltel	CDX8000-M	KMO-SZ221	NCR
3m Anechoic Chamber	KMO	KMO-3AC	KMO-3AC-1	Nov.12, 2016
Temperature Chamber	TABAI	PSL-4GTW	N/A	Feb.10, 2017