

# Request for Class II Permissive Change

FCC ID: **YZZGXP1400**

Date: September 19<sup>th</sup>, 2014

TO: Federal Communication Commission

Please be notified that we, the under signed, Grandstream Networks, Inc. hereby declare that the reasons for this Class II permissive change are as below:

1. Upgraded PoE module hardware version from GXP1405\_PoE\_ V1.4A to GXP1405\_PoE\_ V2.0A;
2. Changed component layout& PCB layout of PoE module (pls see arrow 1);
3. Changed internet chip version from KSZ8873RLL to KSZ8863(pls see arrow 2)
4. Added two power adapter(pls see test report page 4 of 45)

Anything else are the same as before.(pls see below EUT photos)

Grandstream Networks, Inc.

5F, Bldg #1, No.2 Kefa Rd., Science &  
Technology Park, Shenzhen, China

Web site: <http://www.grandstream.com.cn>  
Email: [Nwei@grandstream.com](mailto:Nwei@grandstream.com)

Tel:86-755-26014600  
Fax:86-755-26014601

**Original PoE module photo view**

1



Grandstream Networks, Inc.

5F, Bldg #1, No.2 Kefa Rd., Science &  
Technology Park, Shenzhen, China

Web site: <http://www.grandstream.com.cn>  
Email: [Nwei@grandstream.com](mailto:Nwei@grandstream.com)

Tel:86-755-26014600  
Fax:86-755-26014601

### New PoE module photo view

1



Grandstream Networks, Inc.

5F, Bldg #1, No.2 Kefa Rd., Science &  
Technology Park, Shenzhen, China

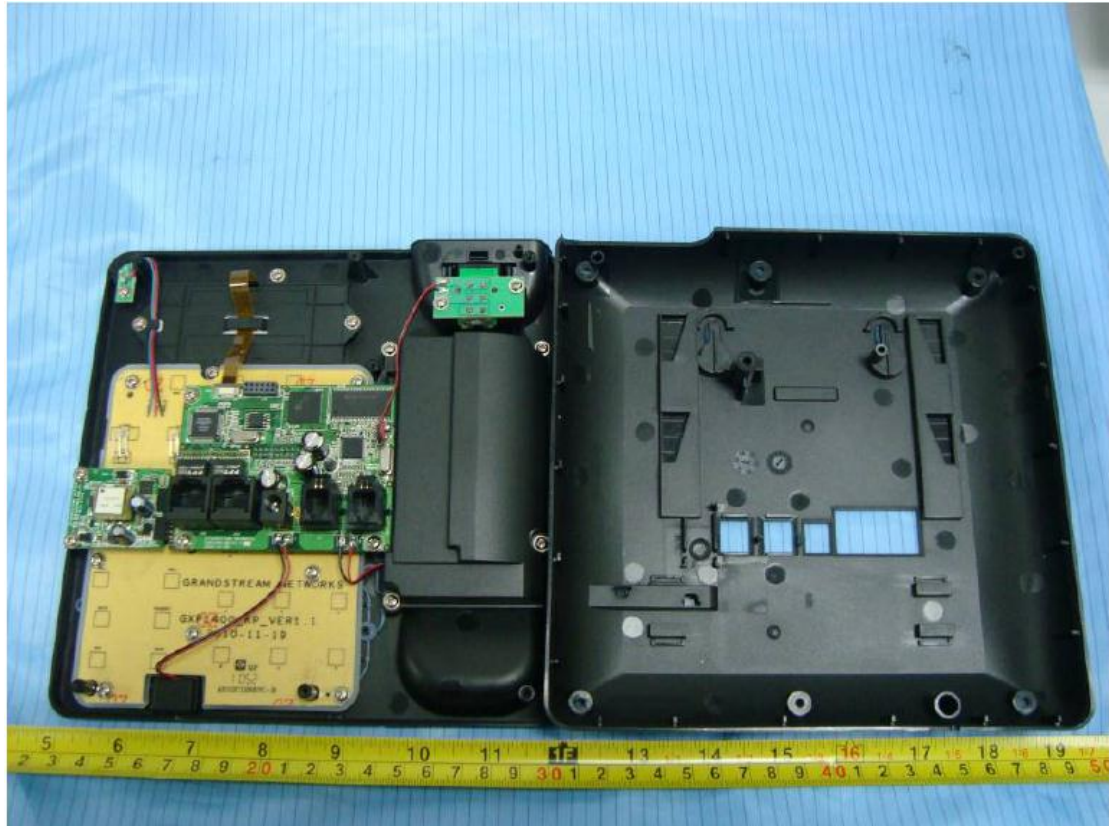
Web site: <http://www.grandstream.com.cn>

Tel:86-755-26014600

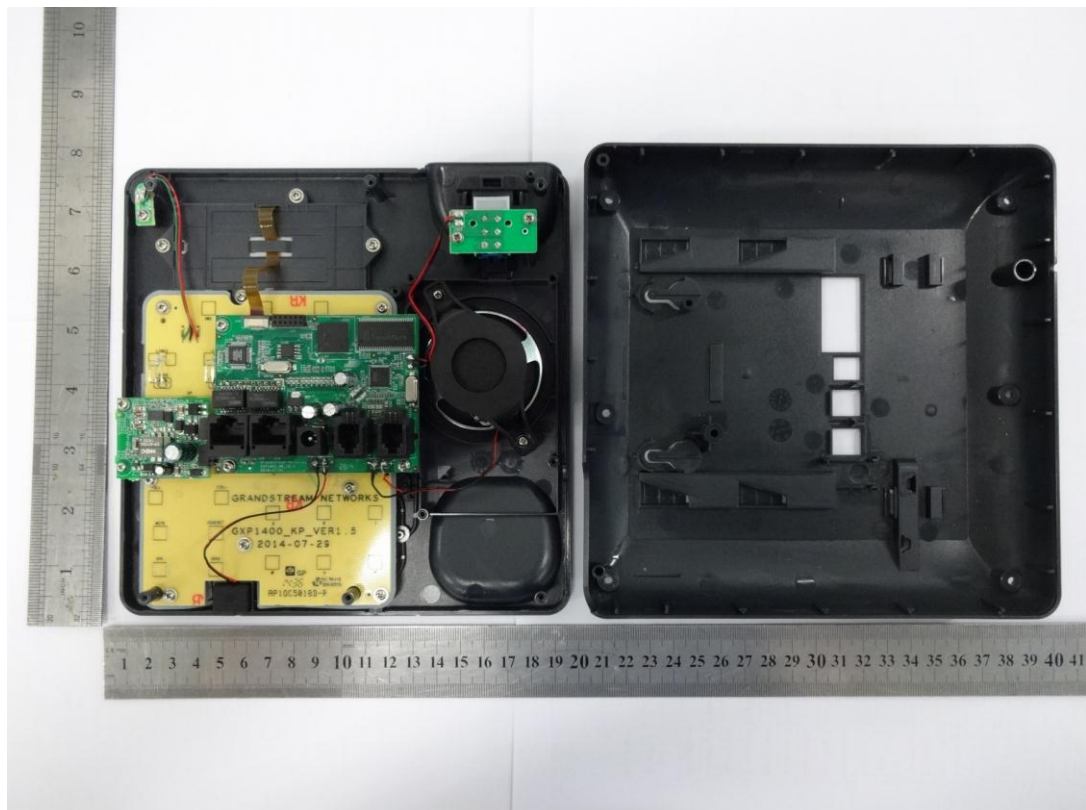
Email: [Nwei@grandstream.com](mailto:Nwei@grandstream.com)

Fax:86-755-26014601

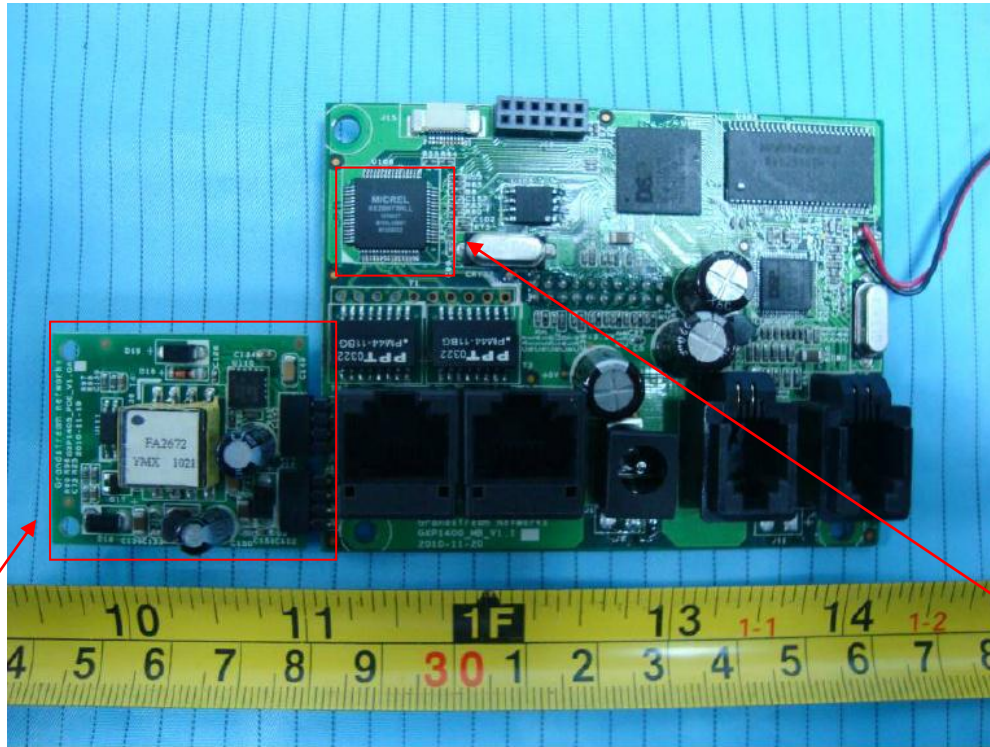
### Original EUT inside photo view



### New EUT inside photo view

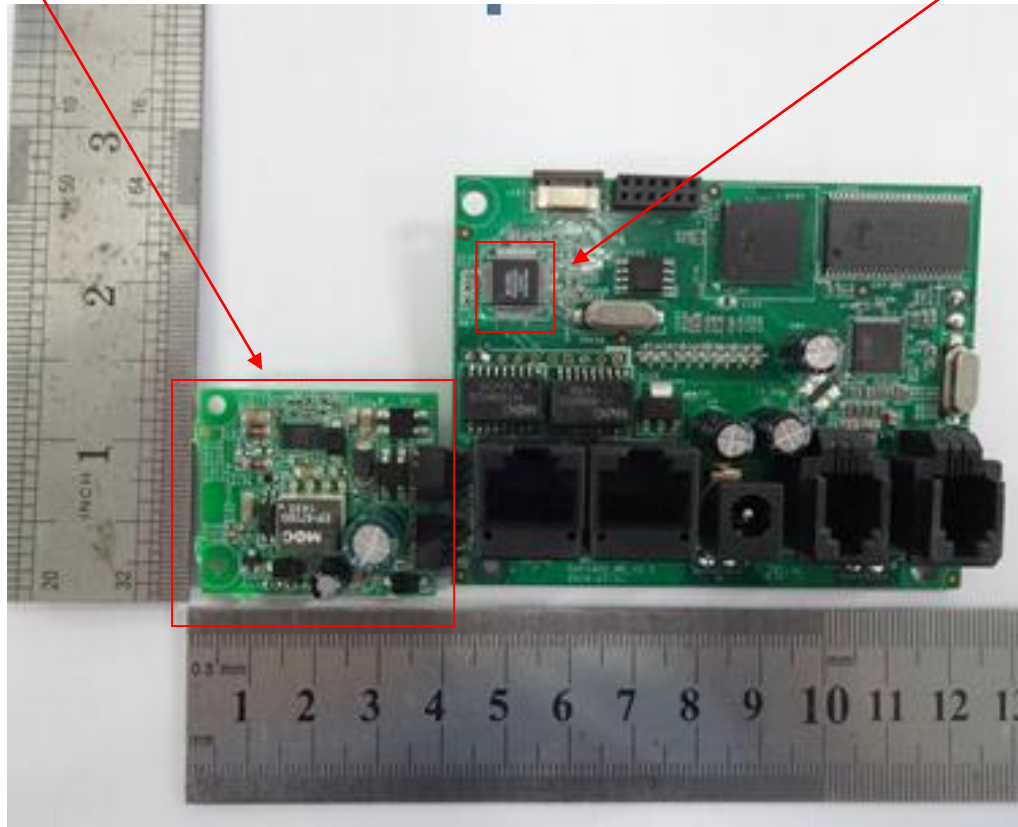


**Original EUT mainboard photo top view**



PoE module

**New EUT mainboard photo top view**



Grandstream Networks, Inc.

5F, Bldg #1, No.2 Kefa Rd., Science &  
Technology Park, Shenzhen, China

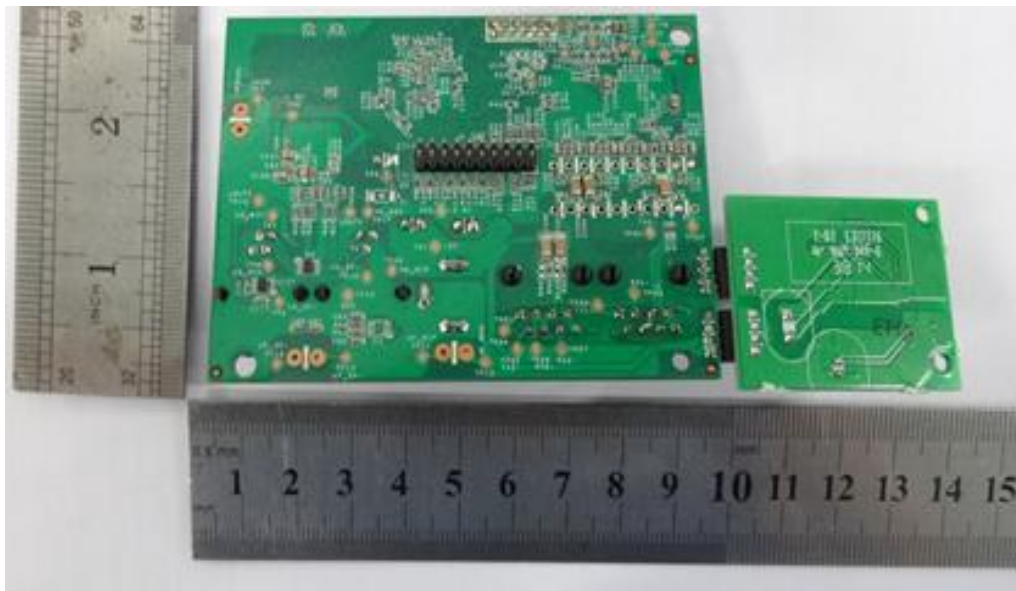
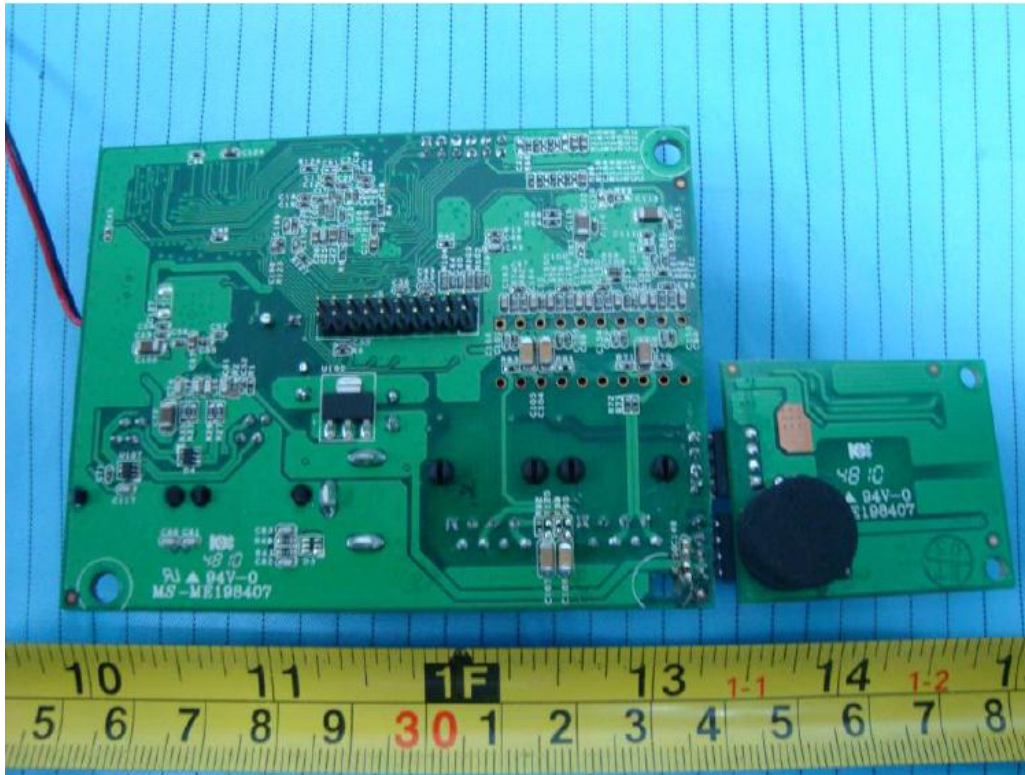
Web site: <http://www.grandstream.com.cn>

Tel:86-755-26014600

Email: [Nwei@grandstream.com](mailto:Nwei@grandstream.com)

Fax:86-755-26014601

**Original EUT mainboard photo bottom view**



Grandstream Networks, Inc.

5F, Bldg #1, No.2 Kefa Rd., Science &  
Technology Park, Shenzhen, China

Web site: <http://www.grandstream.com.cn>  
Email: [Nwei@grandstream.com](mailto:Nwei@grandstream.com)

Tel:86-755-26014600  
Fax:86-755-26014601

---

Sincerely,



Ning Wei / Deputy management

Phone:0755-26014600

FAX:0755-26014601

Email:[Nwei@grandstream.com](mailto:Nwei@grandstream.com)