

Grandstream Networks, INC

5F, Bldg #1, No.2 Kefa Rd., Science &
Technology Park, Shenzhen, China

Web site: <http://www.grandstream.com.cn>

Tel:86-755-26014600

Email: Nwei@grandstream.com

Fax:86-755-26014601

Model difference

FCC ID: **YZZGXP116X**

Date: September 18th, 2012

TO: Federal Communication Commission

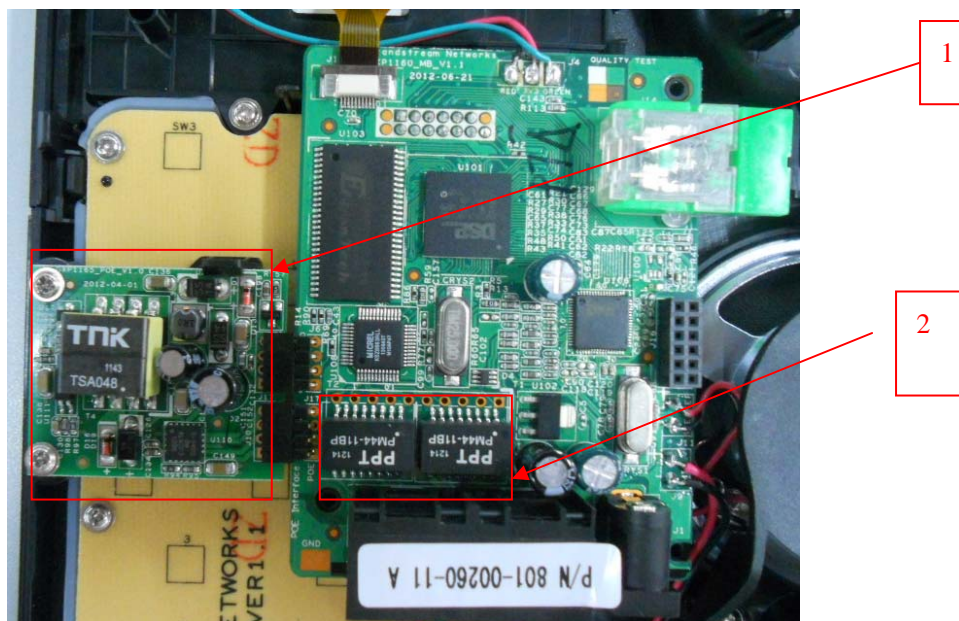
Please be notified that we, the undersigned, Grandstream Networks, INC. hereby declare that the reasons for this Class II permissive difference are as below:

Model Difference	GXP1160	GXP1165
POE_Board	N/A	Yes
ETHERNE_TRANSF	PM48-2064K	BT16B03

Anything else are the same as before(note 1 and note 2 are the difference between GXP1165 and GXP1160:note 1 is the POE_Board;note2 is the ETHERNE_TRANSF).

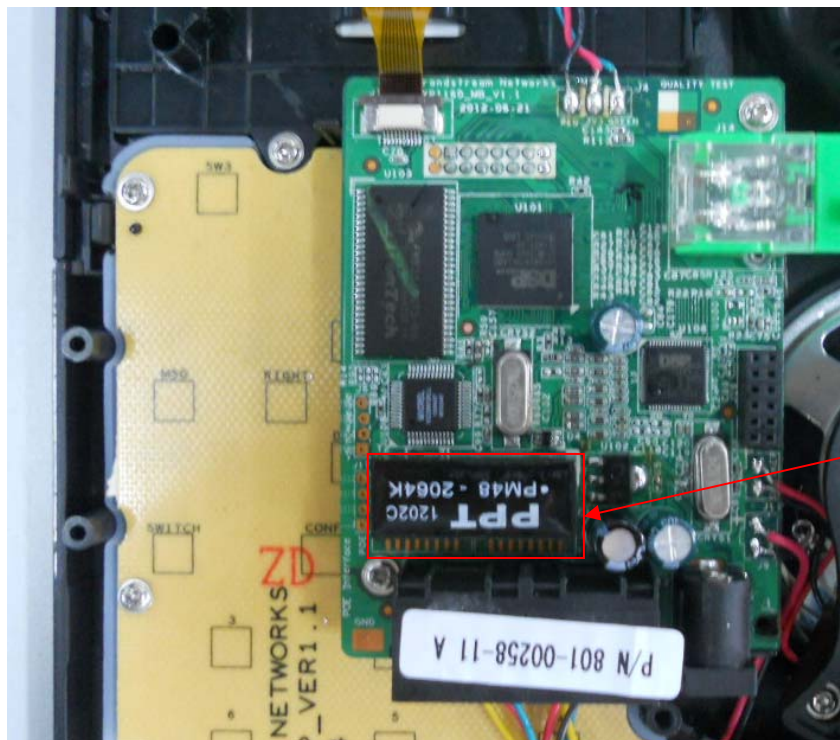


1.



GXP1165 mainboard+POEboard photo view

2.



GXP1160 mainboard photo view

Sincerely,