

Grandstream Networks, Inc.

126 Brookline Ave, 3rd Floor
 Boston, MA 02215. USA
 Tel : +1 (617) 566 - 9300
 Fax: +1 (617) 249 - 1987
www.grandstream.com



| | | | | | | | | |
|----|----|----|----|----|----|--------|----|----|
| BE | BG | CZ | DK | DE | EE | IE | EL | LI |
| ES | FR | HR | IT | CY | LV | LT | LU | CH |
| HU | MT | NL | AT | PL | PT | RO | SI | TR |
| SK | FI | SE | NO | IS | UK | UK(NI) | | |

In the UK and EU member states, operation of 5150-5350 MHz is restricted to indoor use only.



For Certification, Warranty and RMA information, please visit

www.grandstream.com



GWN7664LR

High-Performance Outdoor Long-Range Wi-Fi 6 Access Point

Quick Installation Guide

Content

| | |
|---------------|---|
| English | 1 |
| 简体中文..... | 9 |

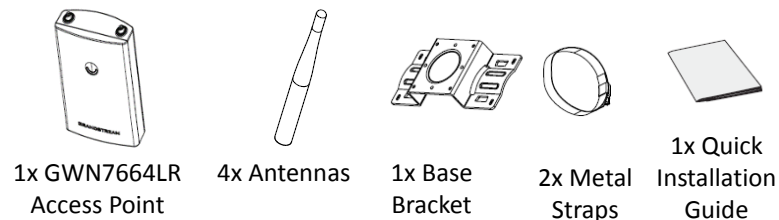
OVERVIEW

The GWN7664LR is an outdoor 802.11ax 4x4:4 Wi-Fi 6 access point for medium-to-large business and enterprises who need to provide long-range coverage in both indoor and outdoor spaces. It offers weatherproof casing and heat resistant technology, dual-band 4x4:4 MU-MIMO with DL/UL OFDMA technology and a sophisticated antenna design for maximum network through that supports 512 clients and an expanded 300-meter coverage range. To ensure easy installation and management, the GWN7664LR includes a built-in controller embedded within the product’s web user interface. It is also supported by GWN.Cloud and GWN Manager, Grandstream’s free cloud and on-premise Wi-Fi management platform. The GWN7664LR is the ideal Wi-Fi AP for voice-over Wi-Fi deployment and offers a seamless connection with Grandstream’s Wi-Fi capable voice and video IP phones. With support for advanced QoS, low-latency real-time applications, mesh networks, captive portals and dual Gigabit networks ports with PoE/PoE+, the GWN7664LR is an ideal outdoor Wi-Fi access point for enterprises, multiple floor offices, warehouses, hospitals, schools and more.

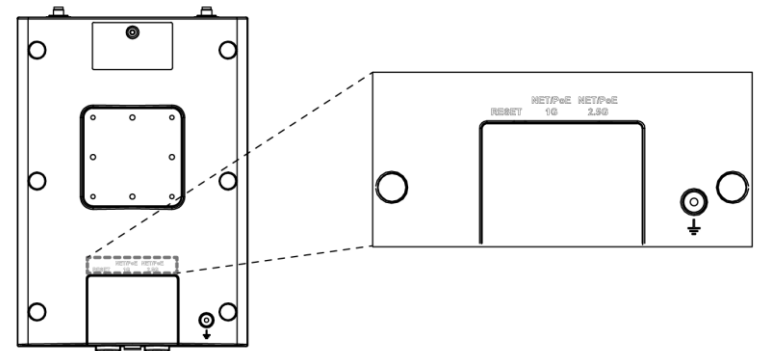
PRECAUTIONS

- Do not attempt to open, disassemble, or modify the device.
- Do not expose this device to temperature outside range of -30 °C to 60 °C for operation and -30 °C to 60 °C for storage.
- Do not expose the GWN7664LR to environments outside of the following humidity range: 10-90% RH (non-condensing).
- Do not power cycle your GWN7664LR during system boot up or firmware upgrade. You may corrupt firmware images and cause the unit to malfunction.

PAKEAGE CONTENTS



GWN7660 PORTS



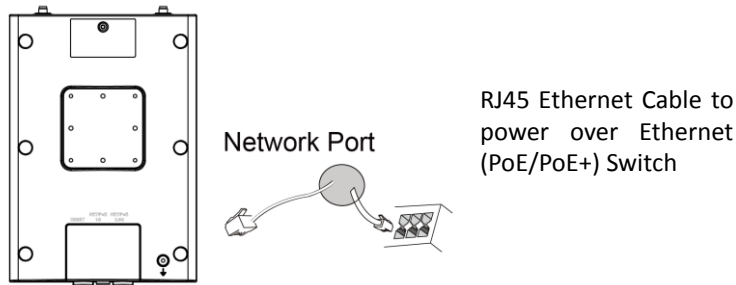
| Port | Description |
|--------------|--|
| NET/POE 2.5G | Ethernet RJ45 port (10Mbps /100Mbps /1Gbps /2.5Gbps) supporting PoE/PoE+. |
| NET/POE 1G | Ethernet RJ45 port (10Mbps/100Mbps/1Gbps) to your router or another GWN76xx, support PoE/PoE+. |
| RESET | Factory reset button. Press for 7 seconds to reset factory default settings. |

POWERING AND CONNECTING THE GWN7664LR

GWN7664LR can be powered on using PoE/PoE+ switch using following steps.

Step 1: Plug a RJ45 Ethernet cable into the network port of GWN7664LR.

Step 2: Plug the other end into the uplink port of the power over Ethernet (PoE/PoE+) switch.

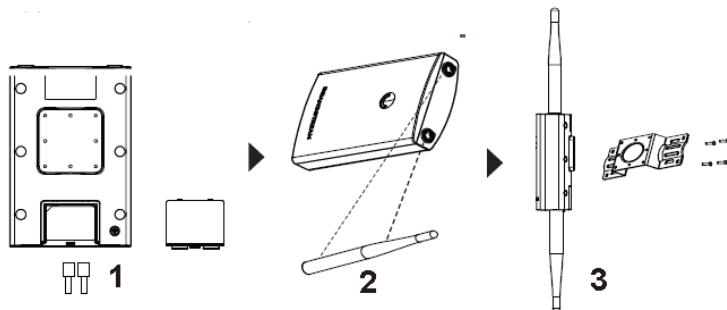


HARDWARE INSTALLATION

GWN7664LR can be mounted on the wall or on a metal bar. Please refer to the following steps for the appropriate installation.

Wall Mount

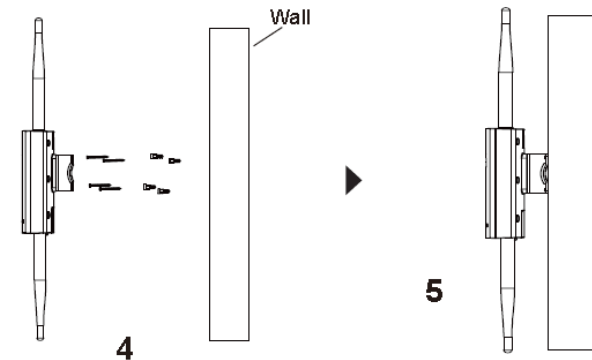
1. Connect the Ethernet cable (RJ45) to the correct ports of your GWN7664LR and insert the cover bracket.
2. Connect each antenna to an antenna connector by rotating it clockwise.
3. Attach the Base Bracket with screws (PM 3.0 x 7) on the back of GWN7664LR access point.



~ 3 ~

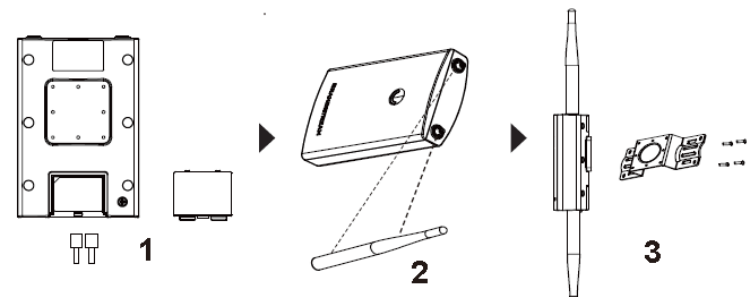
Insert screws (PA 3.5x33) through the Base Bracket and mark the mounting screw holes on the wall using a pencil.

4. Drill the holes in the spots that you have marked and slide the anchors into the wall. Secure the GWN7664LR access point to the wall by inserting the screws into the anchors.



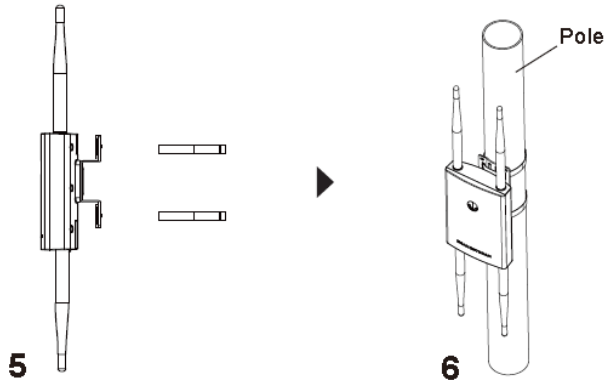
Pole Mount

1. Connect the Ethernet cable (RJ45) to the correct ports of your GWN7664LR and insert the cover bracket.
2. Connect each antenna to an antenna connector by rotating it clockwise.
3. Attach the Base Bracket with screws (PM 3.0x7) on the back of GWN7664LR access point.



~ 4 ~

4. Open the metal straps by turning the locking mechanism counter-clockwise. You can loosen it by hand or use a flathead screwdriver.
5. Straighten out the end of the metal straps and slide it through the back of the base bracket.
6. Wrap the metal strap around the pole and use a flathead screwdriver to tighten the locking mechanism by turning it clockwise.



CONNECT TO GWN7664LR DEFAULT Wi-Fi NETWORK

GWN7664LR can be used as standalone access point out of box, or after factory reset with Wi-Fi enabled by default.

After powering the GWN7664LR and connecting it to the network, GWN7664LR will broadcast a default SSID based on its MAC address **GWN[MAC's last 6 digits]** and a random password.

Note: GWN7664LR's default SSID and password information are printed on the sticker at the back of the unit.

ACCESSING THE CONFIGURATION INTERFACE

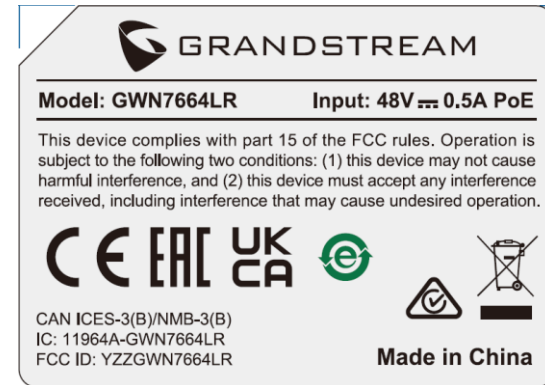
A computer connected to the GWN7664LR's SSID, or to the same network as the GWN7664LR can discover and access its configuration interface using one of the below methods:

Method 1: Discover GWN7664LR using its MAC Address

1. Locate the MAC address on the MAC tag of the unit, which is on the underside of the device, or on the package.
2. From a computer connected to same network as the GWN7664LR, type in following address using GWN7664LR's MAC address on your browser: **https://gwn_<mac>.local**

Example: If a GWN7664LR has the MAC address 00:0B:82:8C:4D:F8, this unit can be accessed by typing

https://gwn_000b828c4df8.local on the browser.



Method 2: Discover GWN7664LR using GWN Discovery Tool

1. Download and install **GWN Discovery Tool** from the following link:
<http://www.grandstream.com/tools/GWNDISCOVERYTool.zip>

2. Open the GWN Discovery Tool, and click on **Scan**.
3. The tool will discover all GWN76XX Access Points connected on the network showing their MAC and IP addresses.
4. Click on Manage Device to be redirected to the GWN7664LR's configuration interface, or type in manually the displayed IP address on your browser.
5. Enter username and password to login. (The default administrator username is "admin" and the default random password can be found at the sticker on the GWN7660).



Notes:

- Make sure that the GWN7664LR is not already paired with another GWN76xx Access Point as slave, GWN7000 Router Series, GWN.Cloud or GWN Manager, otherwise the configuration interface cannot be accessed.
- If the GWN7664LR is already paired, make sure to unpair it first, or do a factory reset.
- It is customer's responsibility to ensure compliance with local regulations for frequency bands, transmit power and others.

- To manage GWN7664LR over cloud, please refer to <https://www.gwn.cloud>.

The GNU GPL license terms are incorporated into the device firmware and can be accessed via the Web user interface of the device at `my_device_ip/gpl_license`. It can also be accessed here: <http://www.grandstream.com/legal/open-source-software>

To obtain a CD with GPL source code information please submit a written request to info@grandstream.com

Refer to online documents and FAQ for more detailed information:

<http://www.grandstream.com/our-products>

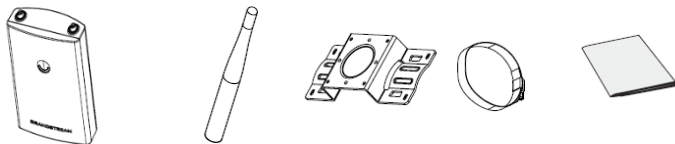
概述

GWN7664LR 是一款具有防水和耐高温特性的无线接入点，可为户外场景提供大范围 Wi-Fi 信号覆盖的解决方案。采用 4×4:4 MU-MIMO 束波成形技术和精密的天线设计，以扩大网络吞吐量、实现高达 300 米的 Wi-Fi 覆盖范围。为了安装和管理更便捷，GWN7664LR 既支持使用无控制器的分布式网络管理设计，内嵌 AC 控制器（嵌入 Web 用户界面中），也支持 GWN.Cloud 和 GWN Manager 以实现大规模的部署管理。凭借高级 QoS、低延时实时应用、512+ 客户端接入、集成 PoE/PoE+ 双千兆网络端口，GWN7664LR 成为了中高级用户密码的中等无线网络环境部署的理想选择。

注意事项

- 不要尝试打开，拆解或修改设备。
- 不要将本设备暴露在温度超出 -30°C 至 60°C 的工作环境或超出 -30°C 至 60°C 的储存环境。
- 不要将本设备暴露在环境湿度如下范围以外：10-90%RH（无冷凝）。
- 系统启动或固件升级期间不要中断电源。这可能会损坏设备固件，并导致设备故障。

包装清单



GWN7664LR 无线接入点 4x 天线 1x 安装支架 2x 捆带 1x 快速安装手册



4x 机牙螺丝
(PM 3.0x7)

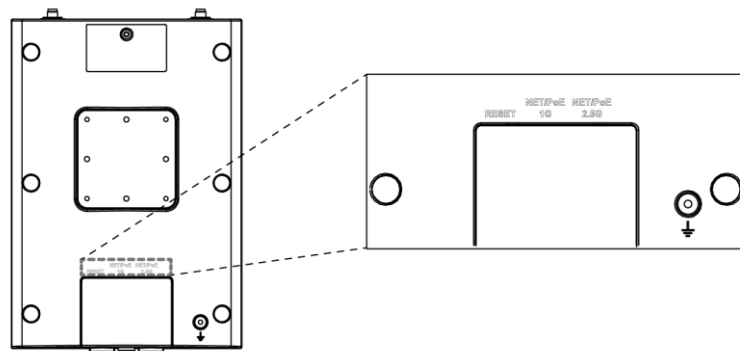


4x 壁虎胶塞



4x 自攻螺丝
(PA 3.5x33)

GWN7664LR 端口



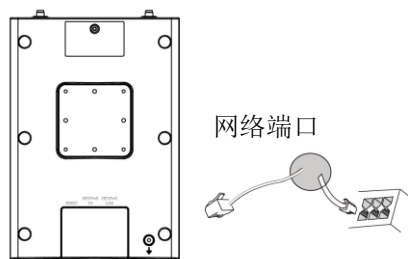
| 端口 | 描述 |
|--------------|---|
| NET/POE 2.5G | 以太网 RJ45 端口（10Mbps/100Mbps/1Gbps/2.5Gbps），需要支持 PoE/PoE+。 |
| NET/POE 1G | 以太网 RJ45 端口（10Mbps/100Mbps/1Gbps），支持连接至路由器或另一个 GWN76xx，支持 PoE/PoE+。 |
| RESET | 恢复出厂设置按钮。 按 7 秒恢复出厂默认设置。 |

上电和连接 GWN7664LR

GWN7664LR 可以通过以下步骤使用 PoE 或 PoE+ 来供电：

步骤 1: 将 RJ45 以太网电缆插入 GWN7664LR 的网络端口。

步骤 2: 将 RJ45 以太网电缆的另一端插入有 PoE/PoE+ 供电的交换机口。



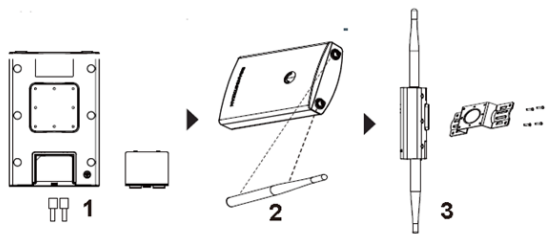
RJ45 电缆连接到以太网供电的 (PoE/PoE+) 交换机或者 PoE/PoE+ 供电转换头

硬件安装

GWN7664LR 可安装在墙壁或金属杆上, 请参阅下列步骤进行安装。

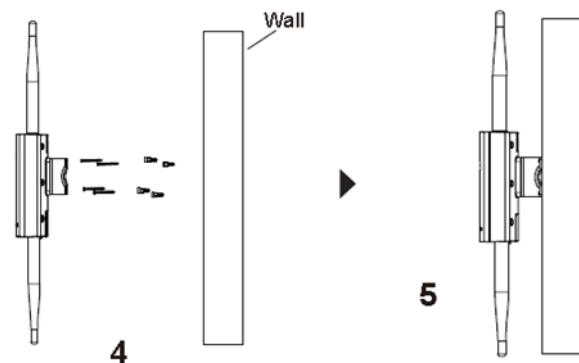
壁挂式安装

1. 将以太网电缆 (RJ45) 连接到正确的 GWN7664LR 端口并合上后盖。
2. 将天线对准天线连接口并顺时针拧紧。
3. 使用机牙螺丝 (PM 3.0x7) 将安装支架固定在 GWN7664LR 后壳上。



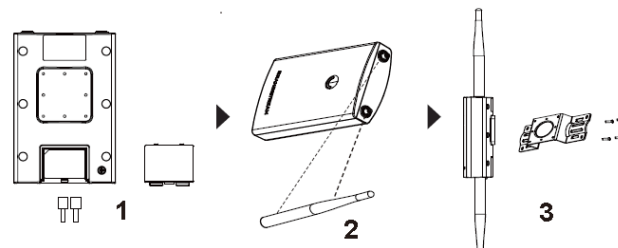
4. 将自攻螺丝 (PA 3.5x33) 插入安装支架并用铅笔在墙上标出螺丝孔的安装位置。

5. 在标注处钻孔并将壁虎胶塞置入墙内, 通过将壁虎胶塞中拧入自攻螺丝将 GWN7664LR 固定在墙上。



纵杆安装

1. 将以太网电缆 (RJ45) 连接到正确的 GWN7664LR 端口并合上后盖。
2. 将天线对准天线连接口并顺时针拧紧。
3. 使用机牙螺丝 (PM 3.0x7) 将安装支架固定在 GWN7664LR 后壳上。





注意:

- 确认 GWN7664LR 并没有被配对到另一个 GWN76xx 或者 GWN7000 系列路由器或者 GWN.Cloud 或者 GWN Manager, 否则配置界面将会显示已配对, 导致无法登录配置页面。
- 如果 GWN7664LR 已经被配对, 请先解除配对, 或者恢复该设备的出厂设置。
- 请遵守当地关于频带、发射功率及其他相关法规。
- 请在 <https://www.gwn.cloud> 进行 GWN7664LR 的云端管理 。

GNU GPL 许可条款已包含在设备固件中, 可以通过设备的 Web 用户界面 `my_device_ip/gpl_license` 进行访问。也可以通过以下链接访问:

<http://www.grandstream.com/legal/open-source-software>。

如果需要包含 GPL 源代码信息的 CD, 请发邮件到 info@grandstream.com 提交请求 。

欲获取详细的话机使用信息, 请在以下链接中下载 GWN7605 用户手册。

<http://www.grandstream.com/support>

For certification information, please refer to User Manuals:

<http://www.grandstream.com>

Common part:

This equipment complies with radiation exposure limits set forth for an uncontrolled environment. This transmitter must not be co-located or operating in conjunction with any other antenna or transmitter. This equipment should be installed and operated with minimum distance 25cm between the radiator& your body.

Après examen de ce matériel aux conformité ou aux limites d'intensité de champ RF, les utilisateurs peuvent sur l'exposition aux radiofréquences et la conformité and compliance d'acquérir les informations correspondantes. La distance minimale du corps à utiliser le dispositif est de 25cm.

U.S. FCC Part 15 Regulatory Information

This device complies with part 15 of the FCC Rules. Operation is subject to the following two conditions: (1) this device may not cause harmful interference, and (2) this device must accept any interference received, including interference that may cause undesired operation.

Any Changes or modifications not expressly approved by the party responsible for compliance could void the user's authority to operate the equipment.

Note: This equipment has been tested and found to comply with the limits for a Class B digital device, pursuant to part 15 of the FCC Rules. These limits are designed to provide reasonable protection against harmful interference in a residential installation. This equipment generates, uses and can radiate radio frequency energy and, if not installed and used in accordance with the instructions, may cause harmful interference to radio communications. However, there is no guarantee that interference will not occur in a particular installation. If this equipment does cause harmful interference to radio or television reception, which can be determined by turning the equipment off and on, the user is encouraged to try to correct the interference by one or more of the following measures:

- Reorient or relocate the receiving antenna.
- Increase the separation between the equipment and receiver.
- Connect the equipment into an outlet on a circuit different from that to which the receiver is connected.
- Consult the dealer or an experienced radio/TV technician for help.

Canada Regulatory Information

Radio equipment

Operation of 5150-5350 MHz is restricted to indoor use only.

This device contains licence-exempt transmitter(s)/receiver(s) that comply with Innovation, Science and Economic Development Canada's licence-exempt RSS(s). Operation is subject to the following two conditions:

- (1) This device may not cause interference.
- (2) This device must accept any interference, including interference that may cause undesired operation of the device.

Le fonctionnement de 5150-5350 MHz est limité à une utilisation en intérieur uniquement. L'émetteur/récepteur exempt de licence contenu dans le présent appareil est conforme aux CNR d'Innovation, Sciences et Développement économique Canada applicables aux appareils radio exempts de licence. L'exploitation est autorisée aux deux conditions suivantes :

- 1) L'appareil ne doit pas produire de brouillage;
- 2) L'appareil doit accepter tout brouillage radioélectrique subi, même si le brouillage est susceptible d'en compromettre le fonctionnement.

CAN ICES-3 (B)/NMB-3(B)

EU Regulatory Information

Support Frequency Bands and Power:

WLAN 2412-2472 MHz < 20 dBm;

WLAN 5150-5250 MHz < 23dBm

WLAN 5250-5350 MHz < 20dBm

WLAN 5470-5725 MHz < 27dBm



| | | | | | | | | |
|----|----|----|----|----|----|--------|----|----|
| BE | BG | CZ | DK | DE | EE | IE | EL | LI |
| ES | FR | HR | IT | CY | LV | LT | LU | CH |
| HU | MT | NL | AT | PL | PT | RO | SI | TR |
| SK | FI | SE | NO | IS | UK | UK(NI) | | |

In the UK and EU member states, operation of 5150-5350 MHz is restricted to indoor use only.

The simplified EU declaration of conformity referred to in Article 10(9) shall be provided as follows:

Hereby, [Grandstream Networks, Inc.] declares that the radio equipment type [GWN7625] is in compliance with Directive 2014/53/EU.

The full text of the EU declaration of conformity is available at the following internet address: www.grandstream.com

UK Regulatory Information

Support Frequency Bands and Power:

WLAN 2412-2472 MHz < 20 dBm;

WLAN 5150-5250 MHz < 23dBm

WLAN 5250-5350 MHz < 20dBm

WLAN 5470-5725 MHz < 27dBm



| | | | | | | | | |
|----|----|----|----|----|----|--------|----|----|
| BE | BG | CZ | DK | DE | EE | IE | EL | LI |
| ES | FR | HR | IT | CY | LV | LT | LU | CH |
| HU | MT | NL | AT | PL | PT | RO | SI | TR |
| SK | FI | SE | NO | IS | UK | UK(NI) | | |

In the UK and EU member states, operation of 5150-5350 MHz is restricted to indoor use only.